

SHEFFIELD VILLAGE

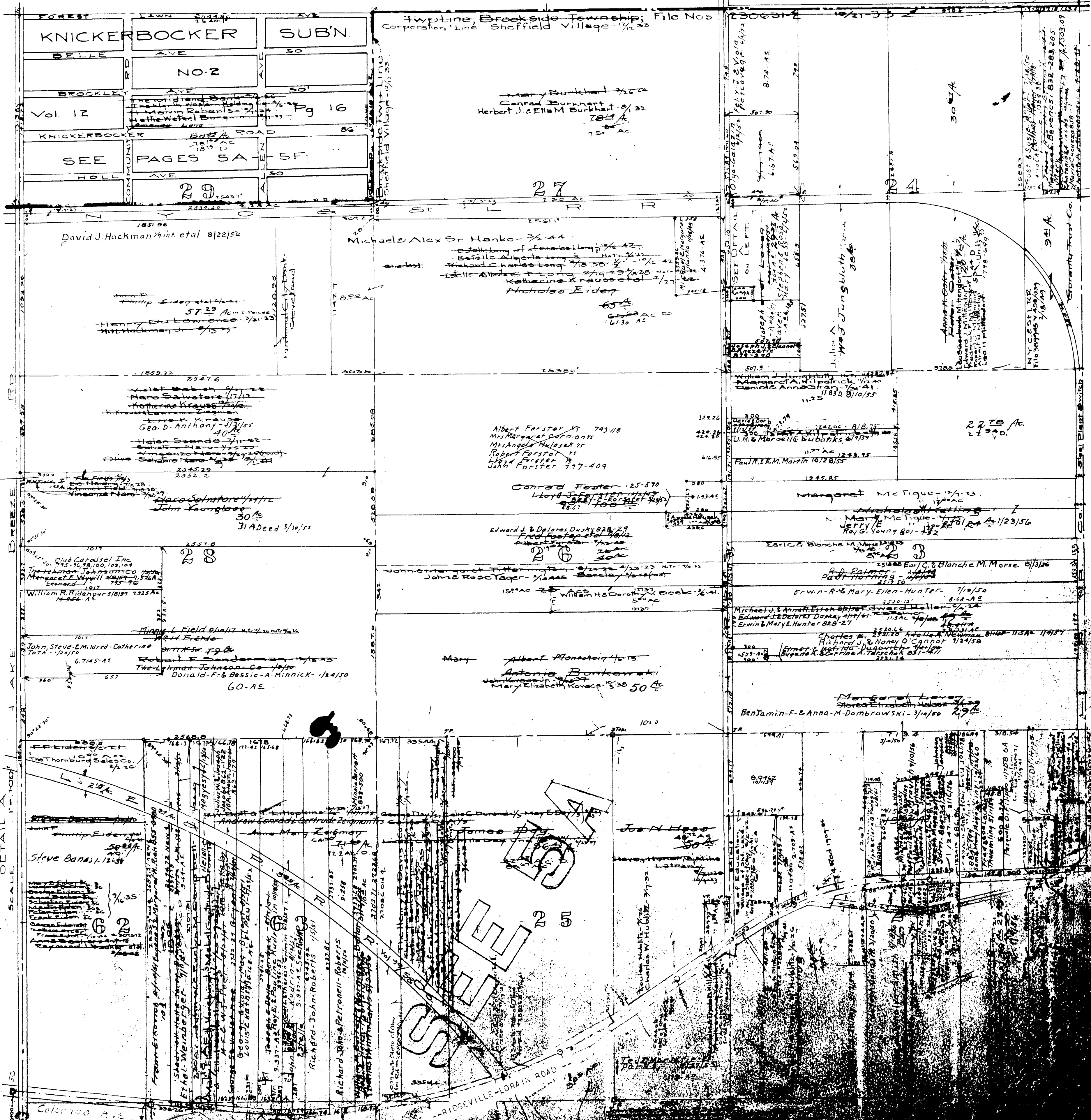
COPYRIGHT 1962
U.S. GOVERNMENT, TITLE 17
LOHAIN COUNTY, OHIO

Reproduced by,
Allied Microfilm Corp.
Akron, Ohio

SHEFFIELD LAKE VILLAGE PAGE 7

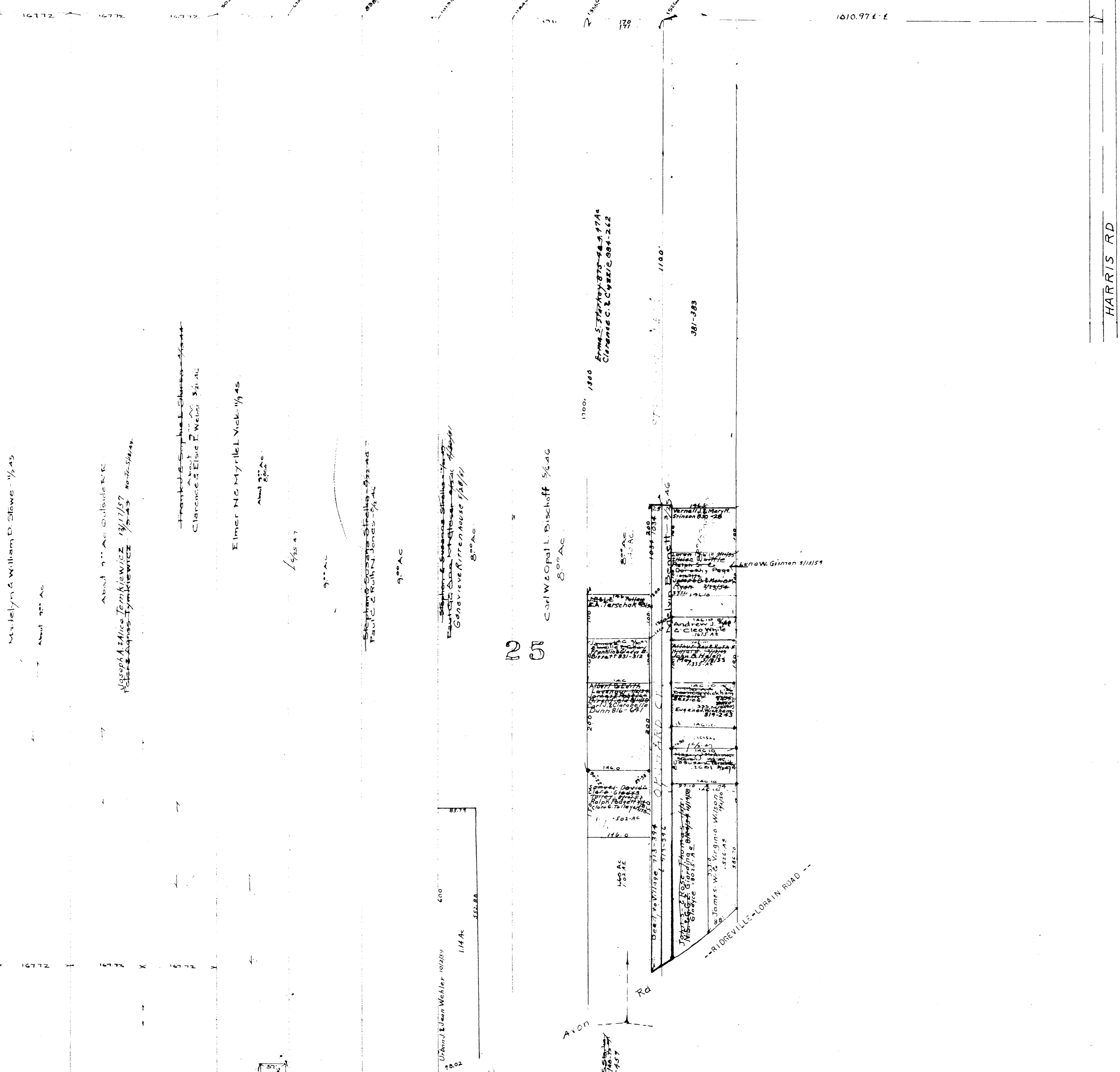
SHEFFIELD TWP.
North Center Part Scale 1"=40'

OSTER ROAD



13

3



Madelyn & William D. Stowe - 1/4 AC

About 7 AC Outside RR
MAGDALENIA J. Alice Tymkiewicz 12/17/57
Peter Agnes Tymkiewicz 1/2 AC No. 24-51244

Frank & Sophie L. Stuber
About 1/2 AC
Clarence & Elsie F. Weber 3/1 AC

Elmer N.C. Myrtle L. Vick - 1/3 AC

1/2 AC

9 AC

Stephen & Suzanne Stalle
Paul C. & Ruth N. Jones - 1/2 AC

9 AC

Stephen & Suzanne Stalle
Eugene & Ruth Staller
Genevieve Rittenhouse 1/2 AC

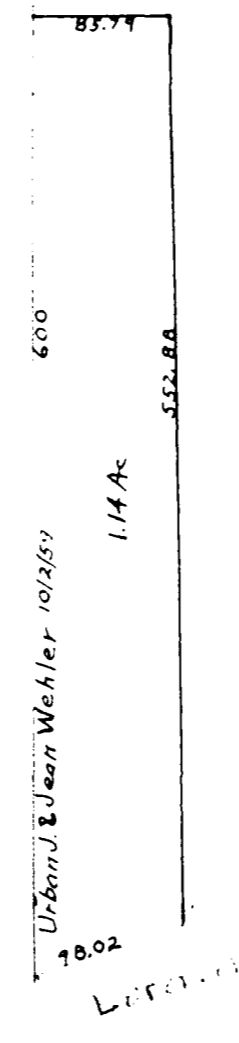
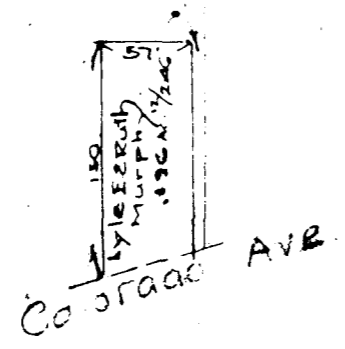
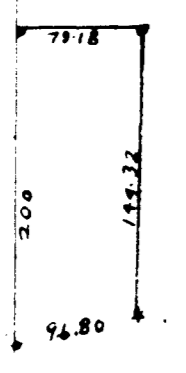
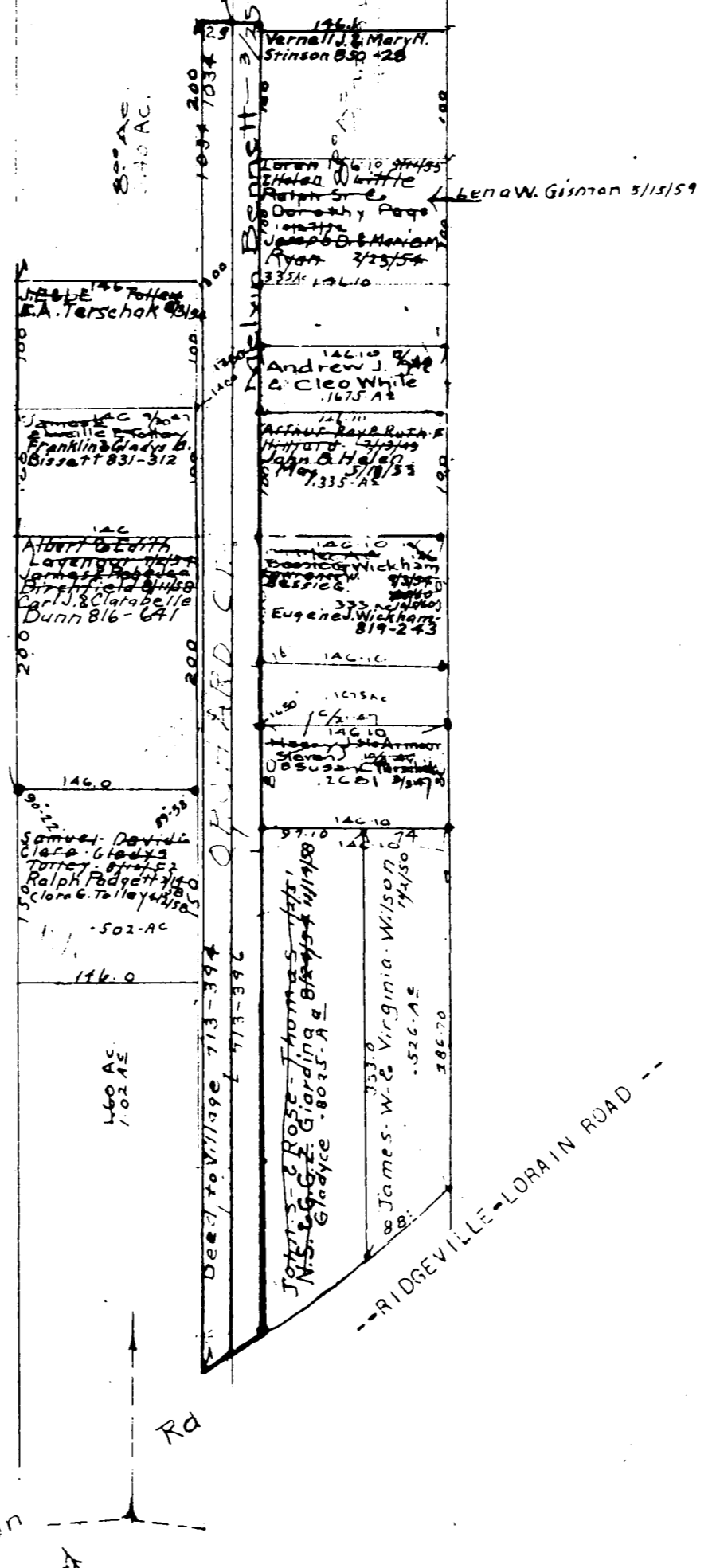
8 AC

2
61

Carl W. Copal L. Bischoff 3/4 AC
8 AC

1700 1800
Erma S. Markoy 875-249 17A
Clarence C. & Cheryl C. 884-262

381-283



William A. Allen
Sen./a Jeon 5/19/57 894-157

COPYRIGHT 1962
U.S. CODE, TITLE 17
LORAIN COUNTY, OHIO

Reproduced by,
Allied Microfilm Corp.
Akron, Ohio

SHEFFIELD
VILLAGE

HARRIS RD

1 IN. = 120 FT.