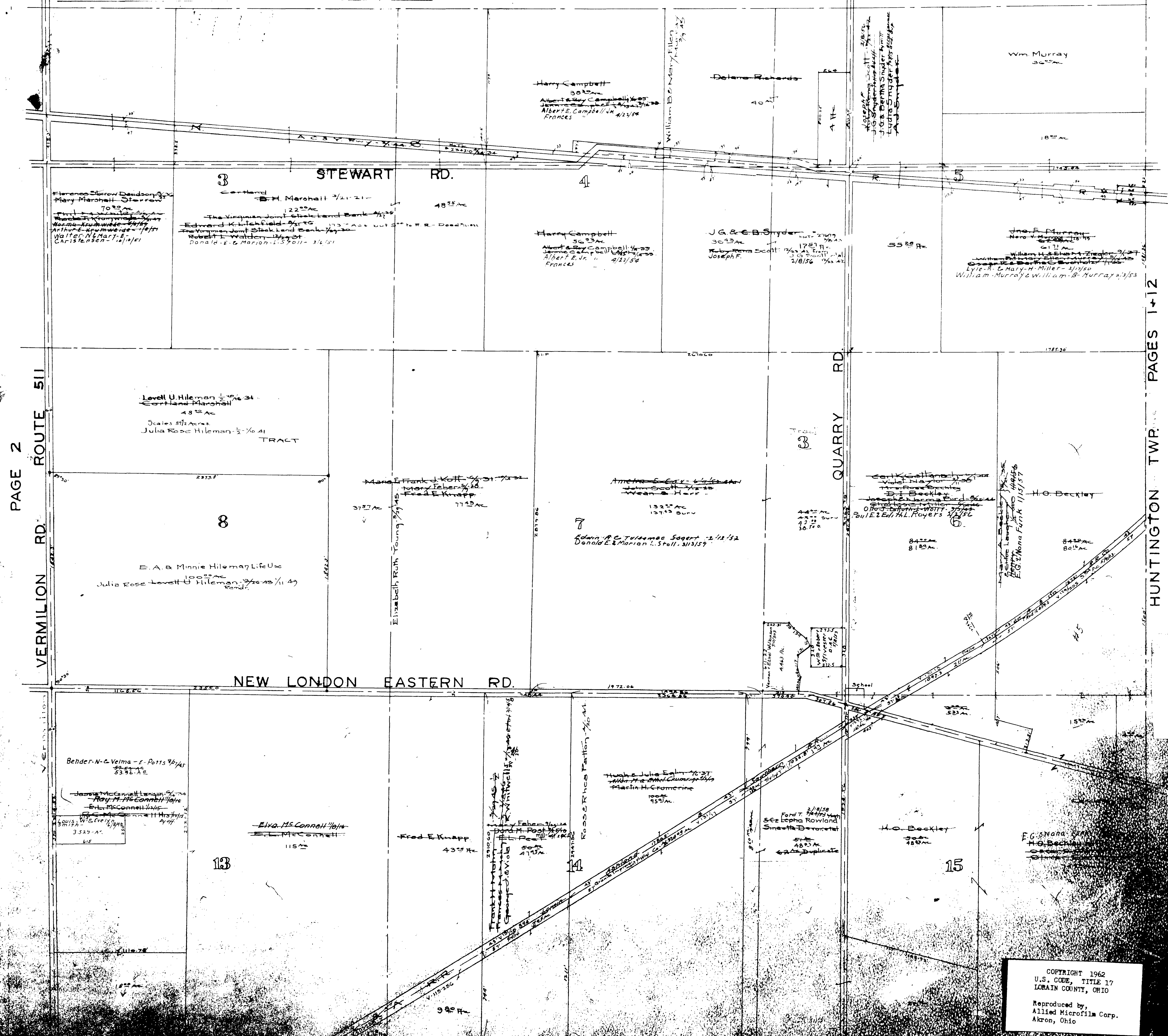


MAP OF ROCHESTER TOWNSHIP



PAGE 2

VERMILION RD. ROUTE 511

HUNTINGTON TWP. PAGES 1+12

ROCHESTER

COPYRIGHT 1962
 U.S. CODE, TITLE 17
 LORAIN COUNTY, OHIO

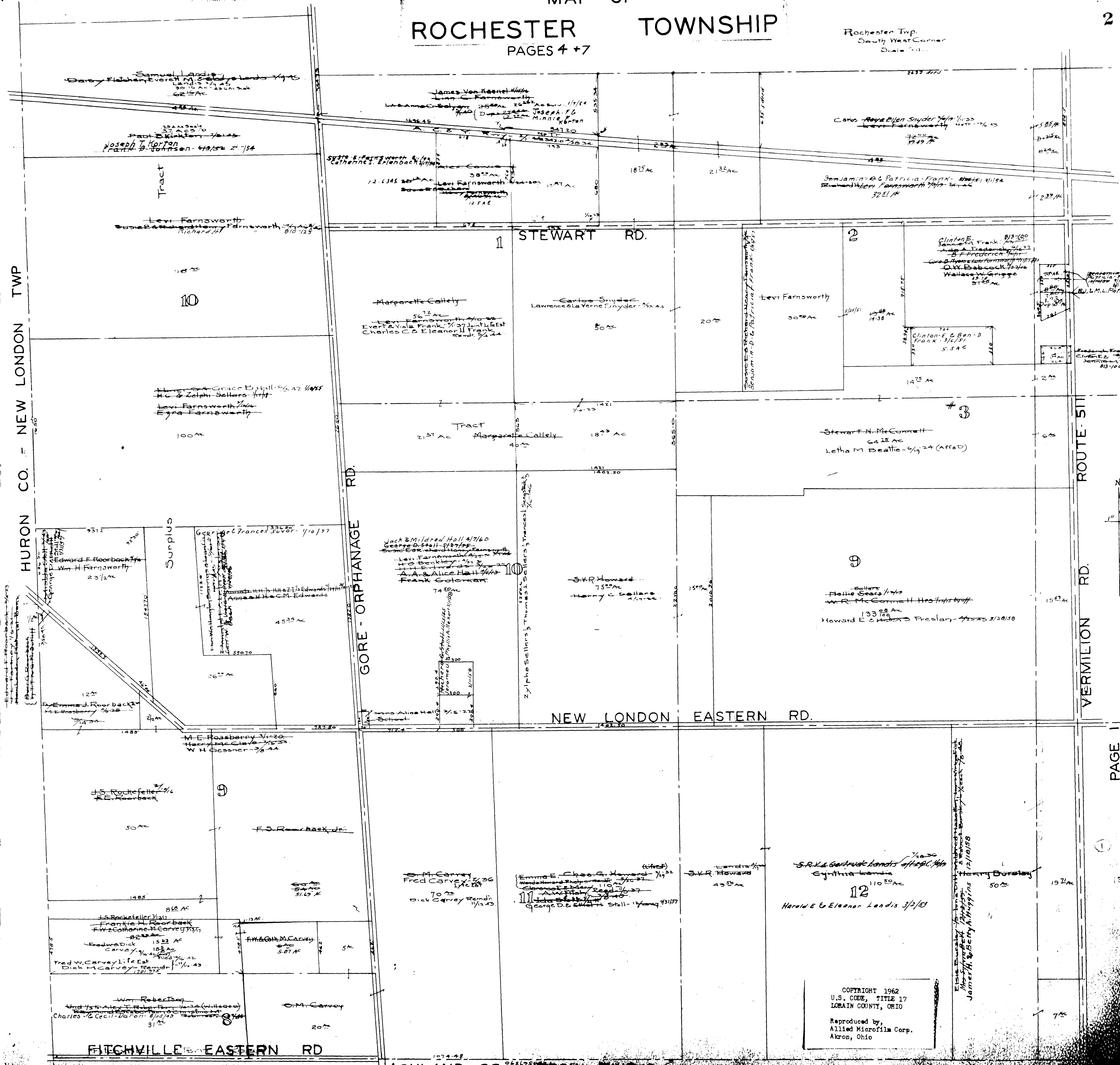
Reproduced by,
 Allied Microfilm Corp.
 Akron, Ohio

Total

1

MAP OF ROCHESTER TOWNSHIP
PAGES 4 + 7

Rochester Twp.
South West Corner
Scale 1" = 400'



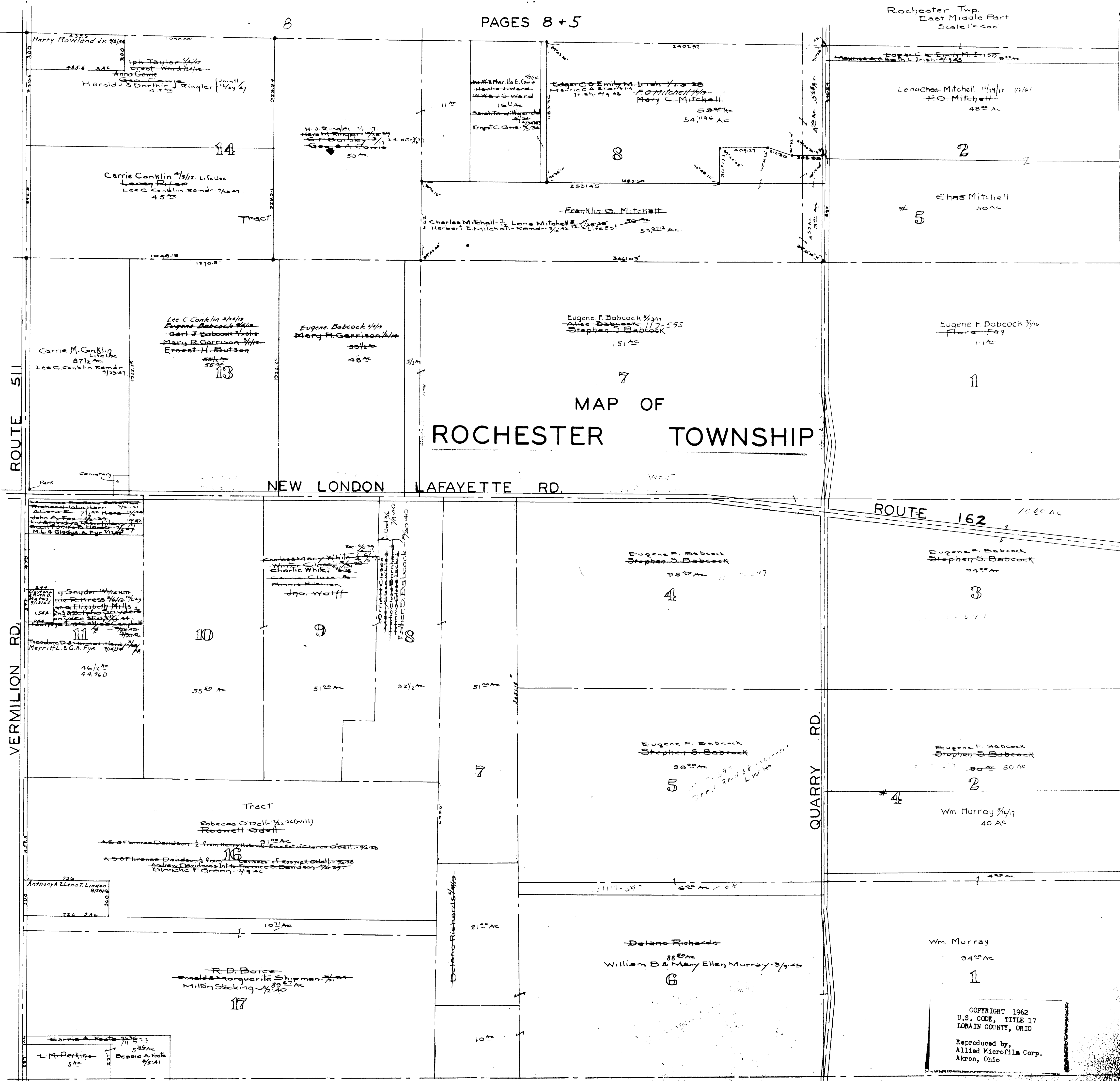
HURON CO. - NEW LONDON TWP

ROUTE 511
VERMILION RD.



PAGE 1

COPYRIGHT 1962
U.S. CODE, TITLE 17
LORAIN COUNTY, OHIO
Reproduced by,
Allied Microfilm Corp.
Akron, Ohio



MAP OF
ROCHESTER TOWNSHIP

NEW LONDON LAFAYETTE RD.

ROUTE 162

ROUTE 511

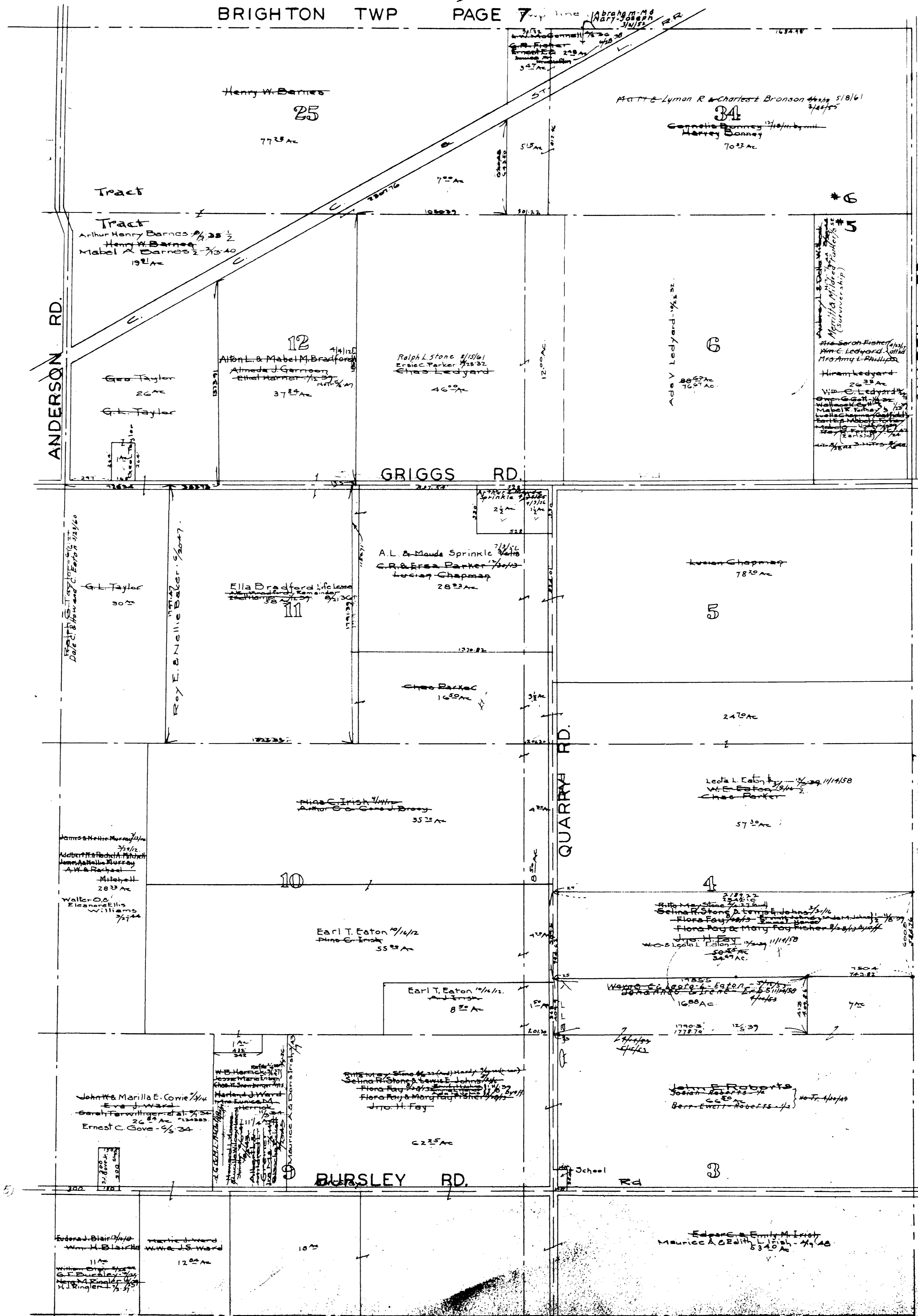
VERMILION RD.

QUARRY RD.

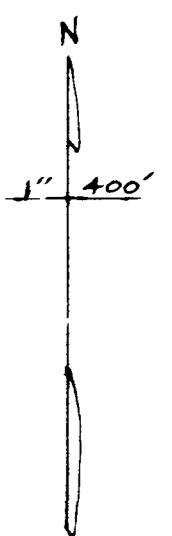
HUNTINGTON TWP
PAGES 12 + 13

PAGE 4

COPYRIGHT 1962
U.S. CODE, TITLE 17
LORAIN COUNTY, OHIO
Reproduced by,
Allied Microfilm Corp.
Akron, Ohio



Rochester Twp.
North East Part
Scale 1" = 400'



PAGE 8

HUNTINGTON TWP.
PAGES 13 + 14

ROCHESTER TOWNSHIP
MAP OF

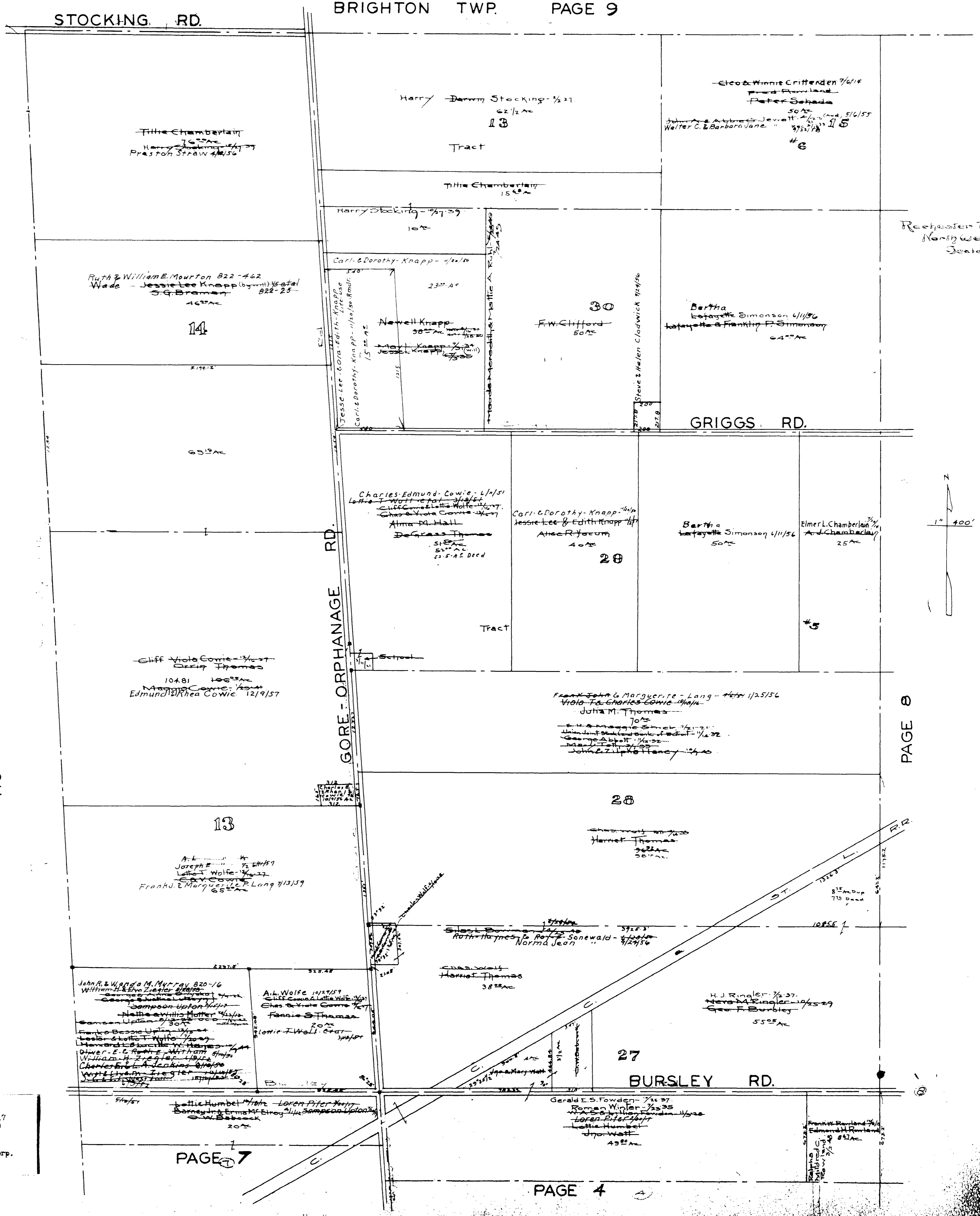
COPYRIGHT 1962
U.S. CODE, TITLE 17
LORAIN COUNTY, OHIO
Reproduced by,
Allied Microfilm Corp.
Akron, Ohio

STOCKING RD.

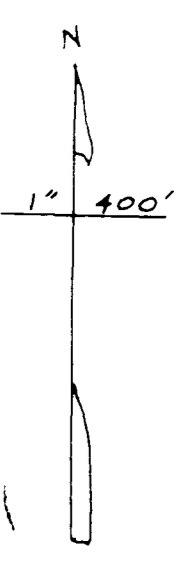
HURON CO. - NEW LONDON TWP.

ROCHESTER MAP OF TOWNSHIP

COPYRIGHT 1962 U.S. CODE, TITLE 17 LORAIN COUNTY, OHIO
Reproduced by, Allied Microfilm Corp. Akron, Ohio



Recheck Top North West Corner Scale 1" = 400'



PAGE 8

PAGE 7

PAGE 4

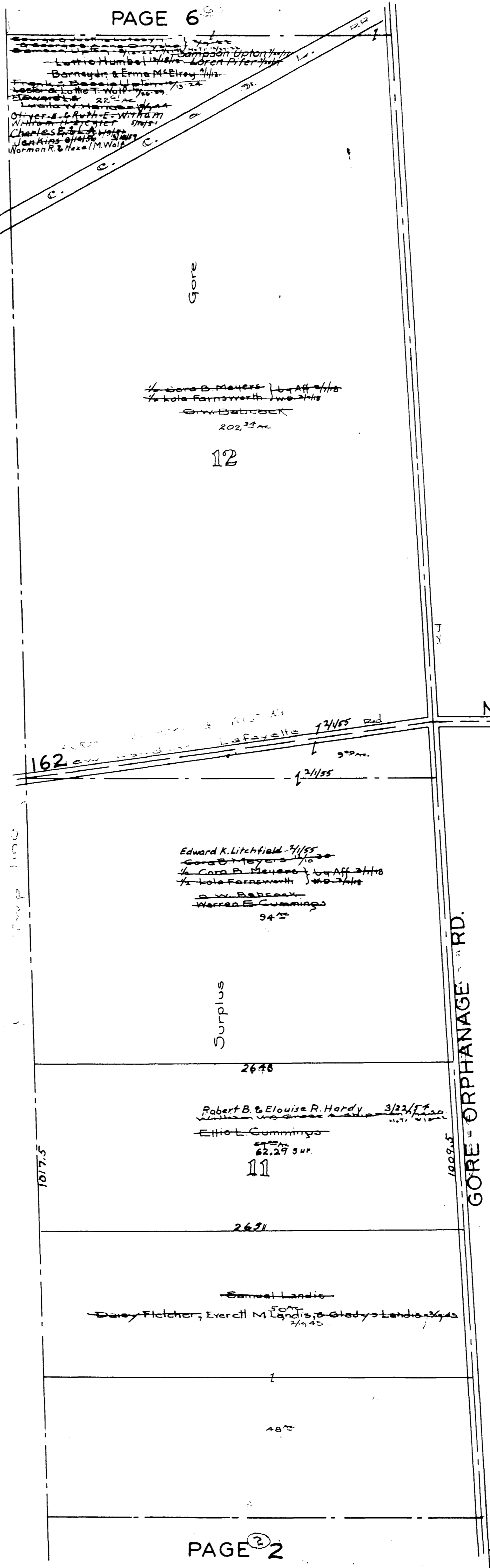
Lattie Humbel
 Barney & Emma McElroy
 Edward K. Litchfield
 Charles E. Litchfield
 Norman R. & Hazel M. Wolf

Rochester Twp.
 Middle West Part
 Scale 1"=400'

HURON CO. - NEW LONDON TWP.

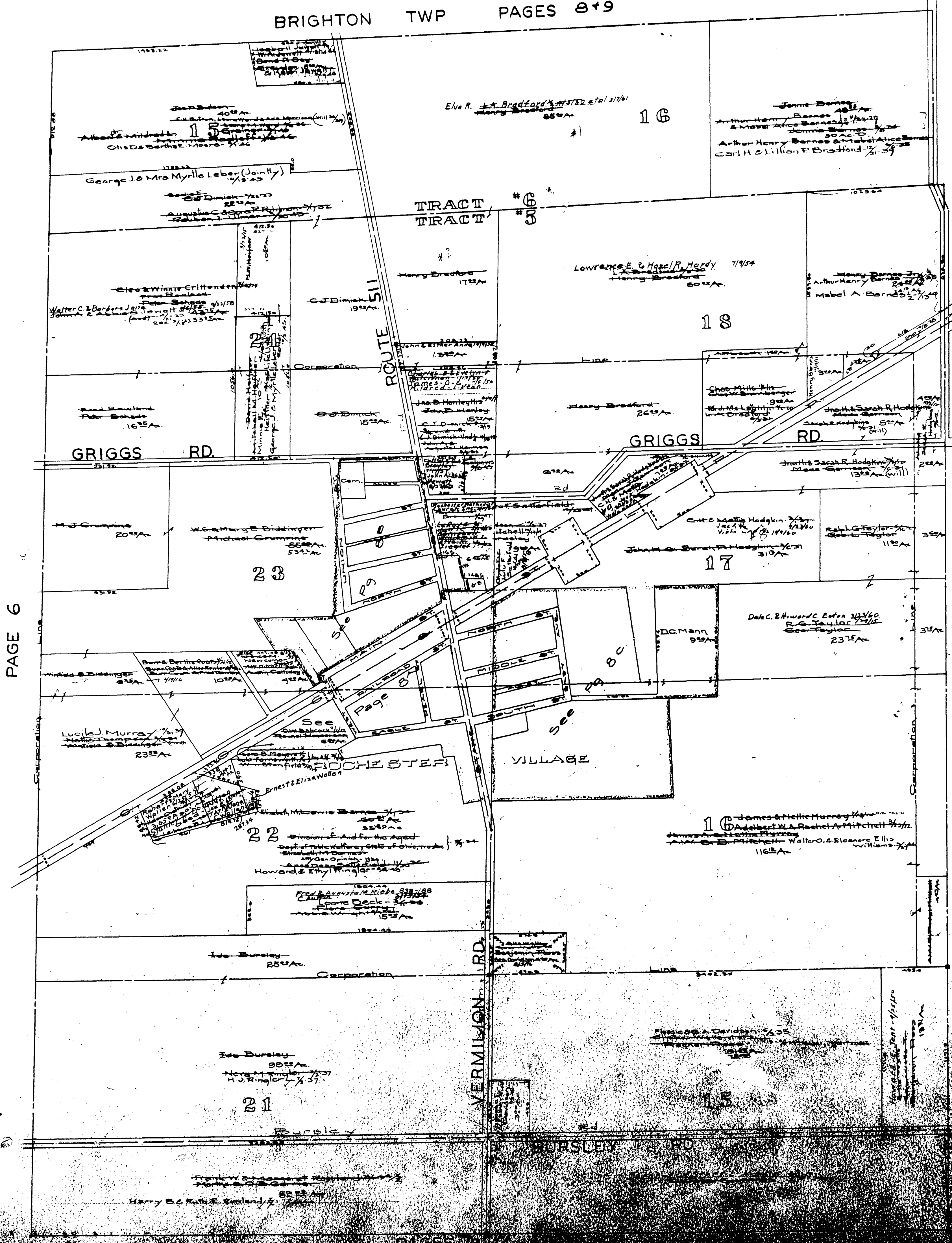
ROUTE 162

NEW LONDON LAFAYETTE RD.



MAP OF ROCHESTER TOWNSHIP

COPYRIGHT 1962
 U.S. CODE, TITLE 17
 LORAIN COUNTY, OHIO
 Reproduced by
 Allied Microfilm Corp.
 Akron, Ohio



ROCHESTER TWP. North Center Part Scale 1" = 400'



PAGE 6

PAGE 5

MAP OF ROCHESTER TOWNSHIP

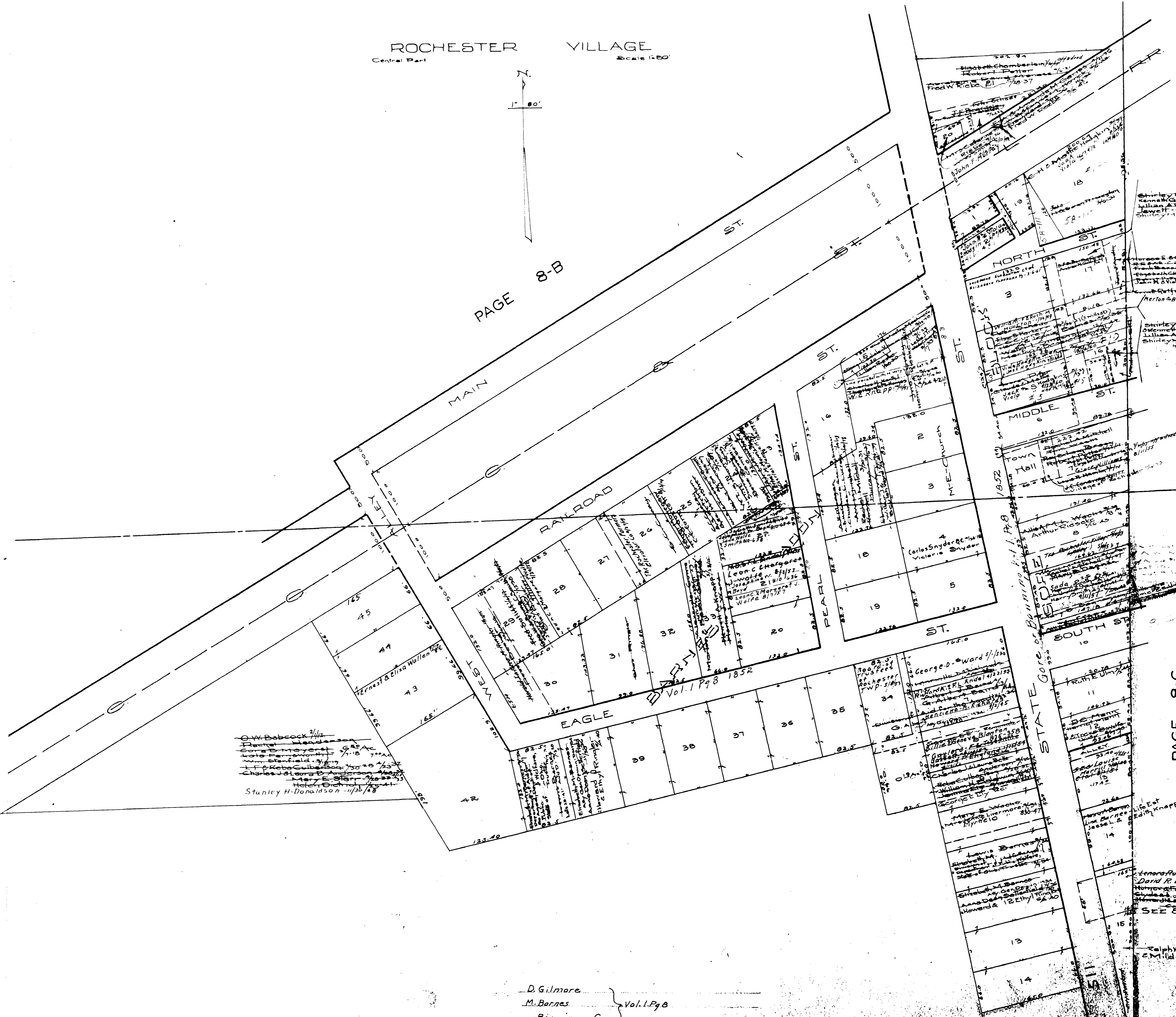
COPYRIGHT 1962
 U.S. CODE, TITLE 17
 LORAIN COUNTY, OHIO

Reproduced by,
 Allied Microfilm Corp.
 Akron, Ohio

ROCHESTER VILLAGE
Central Part Scale 1:80'

PAGE 8-B

PAGE 8-C



O.W. Babcock 1/11/44
 Frank Meadness
 George Maynard 5/20/44
 Lote Farmington 9/18/44
 Wm. Stanfield 1/1/45
 L.P. Robt. Culbertson 7/30/45
 Charles J. Adams 8/1/45
 Mary E. Starr 1/20/46
 Helen E. Dickson 1/20/46
 Stanley H. Donaldson 1/30/48

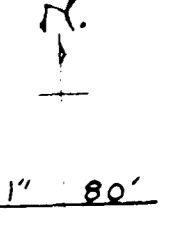
D. Gilmore
 M. Barnes } Vol. 1, Pg. 8
 Banning at Gore

MAP OF
ROCHESTER TOWNSHIP

COPYRIGHT 1962
 U.S. CODE, TITLE 17
 LORAIN COUNTY, OHIO
 Reproduced by,
 Allied Microfilm Corp.
 Akron, Ohio

GRIGGS ROAD

ROCHESTER VILLAGE
Center Part
Scale 1" = 80'



D. Gilmore
M. Barnes (Barns) Vol. 1 Pg 8 1852
Banning & Gore
Wheeler & Mitchell 1 27 1859
G. Gilmore 1 32 1863
Village 3 24 1887

Note: Occupation is indicated in Red.

PAGE 8-A

MAP OF
ROCHESTER TOWNSHIP

COPYRIGHT 1962
U.S. CODE, TITLE 17
LORAIN COUNTY, OHIO

Reproduced by,
Allied Microfilm Corp.
Akron, Ohio

ROUTE 511

PAGE 8-A

ROCHESTER VILLAGE
Central Part
Scale 1"=80'



PAGE 8-A

MAP OF
ROCHESTER TOWNSHIP

COPYRIGHT 1962
U.S. CODE, TITLE 17
LORAIN COUNTY, OHIO
Reproduced by,
Allied Microfilm Corp.
Akron, Ohio