

RIDGEVILLE TWP.

East Middle Part.

Scale 1"=400'

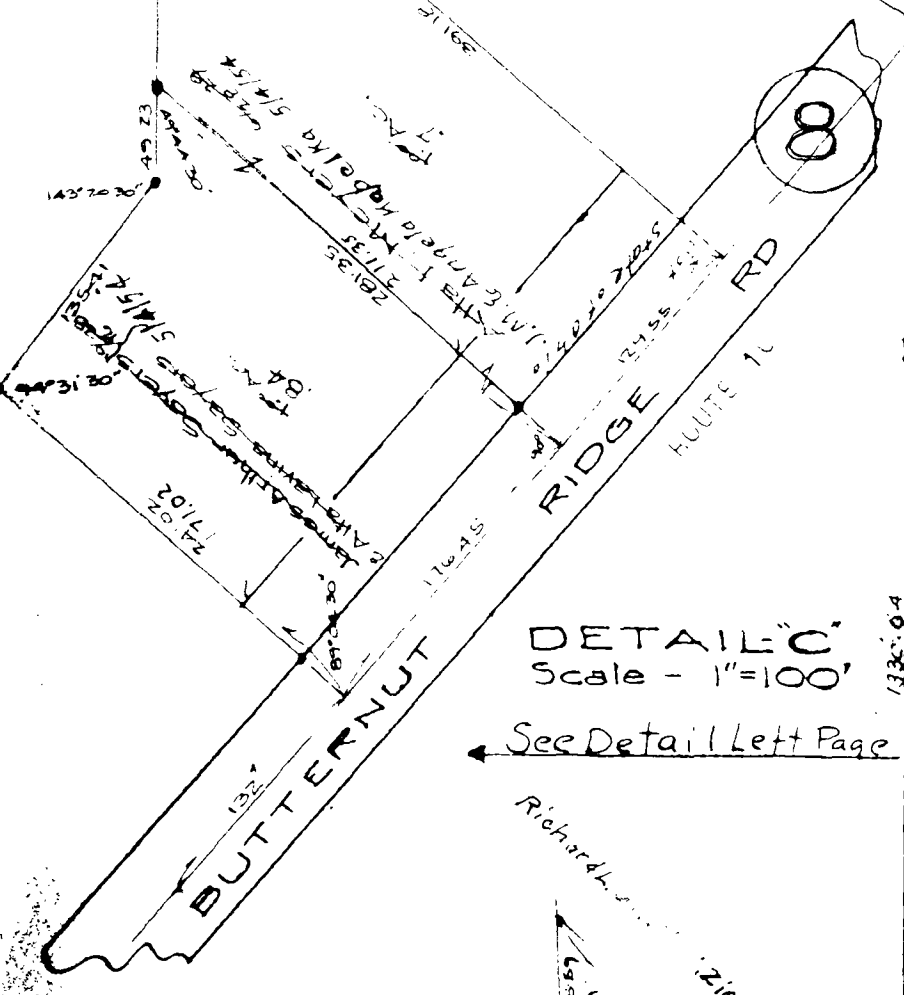
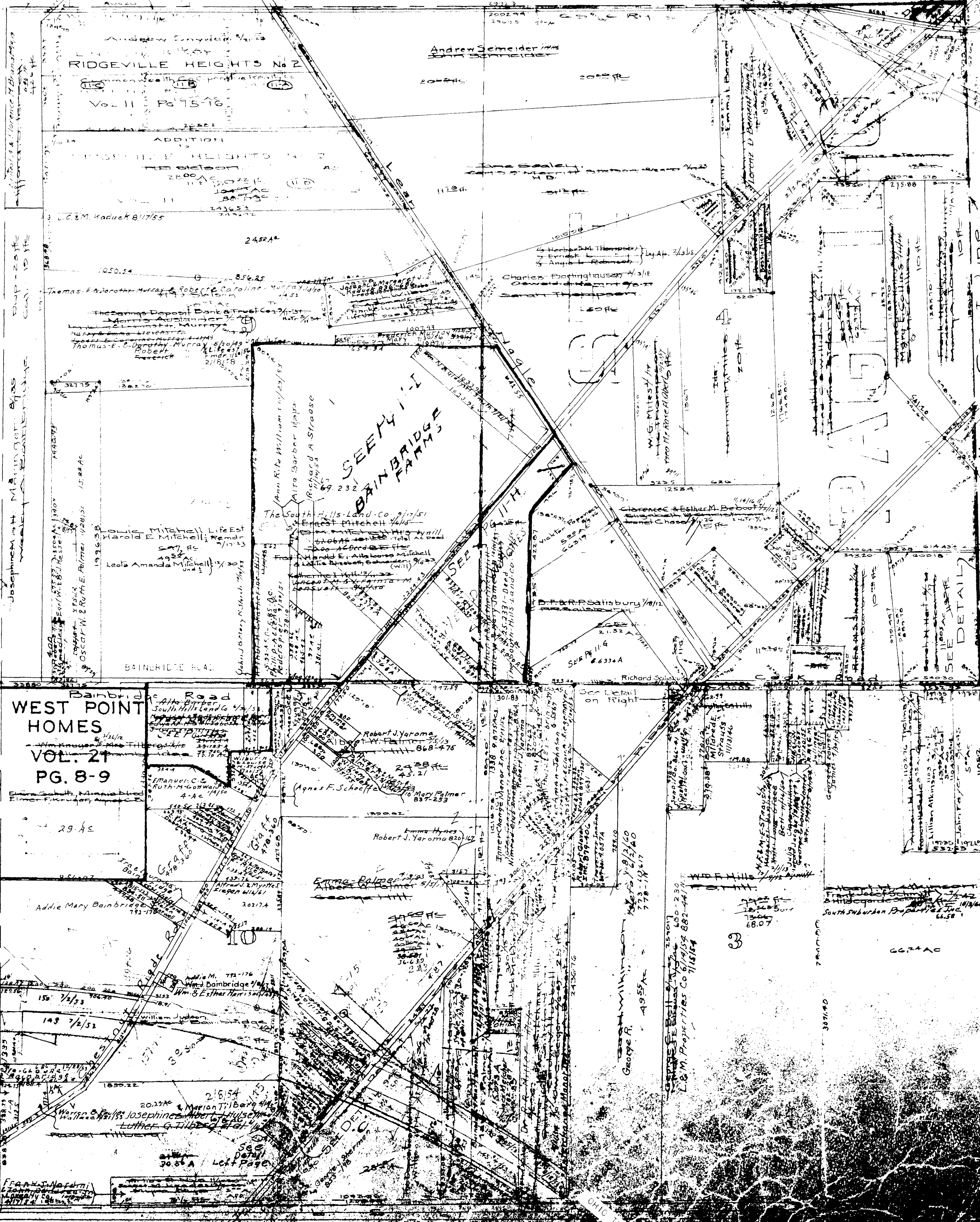
Easement to State
Vol 277-216

COPYRIGHT 1962
U.S. GOVERNMENT, TITLE 17
LOHAIN COUNTY, OHIO

Reproduced by
Allied Microfilm Corp.
Akron, Ohio

RIDGEVILLE
TOWNSHIP

Note - this piece is plotted with lot 16



DETAIL C
Scale - 1"=100'
See Detail Left Page

Wade M & Janet M
Wilford - 5/23/45
DETAIL B
Scale 1"=200'

Bainbridge Road
WEST POINT
HOMES
VOL. 21
PG. 8-9

SEE 4-11
BAINBRIDGE
FARMS

SEE 4-11
BAINBRIDGE
FARMS

SEE 4-11
BAINBRIDGE
FARMS

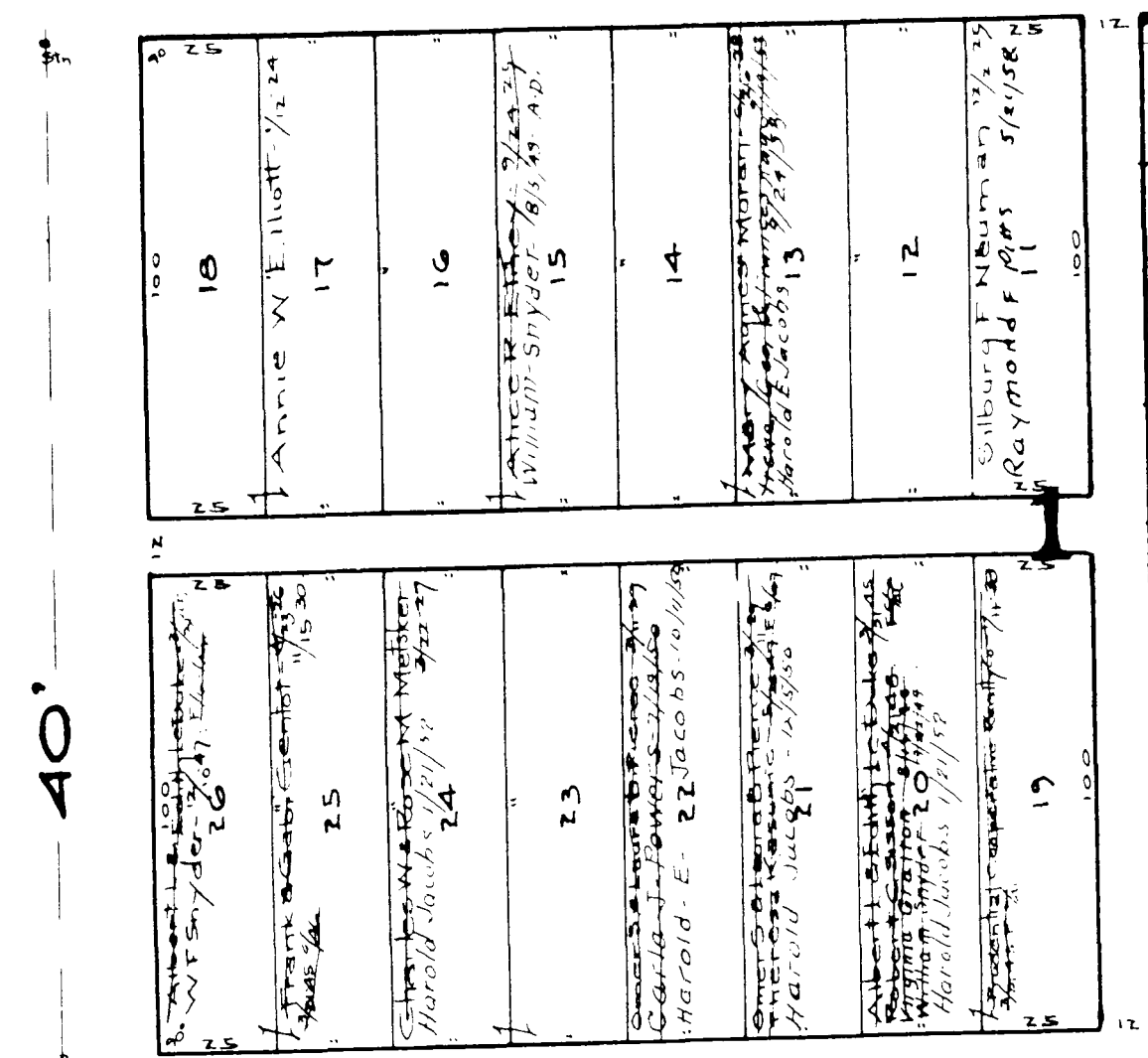
15

10

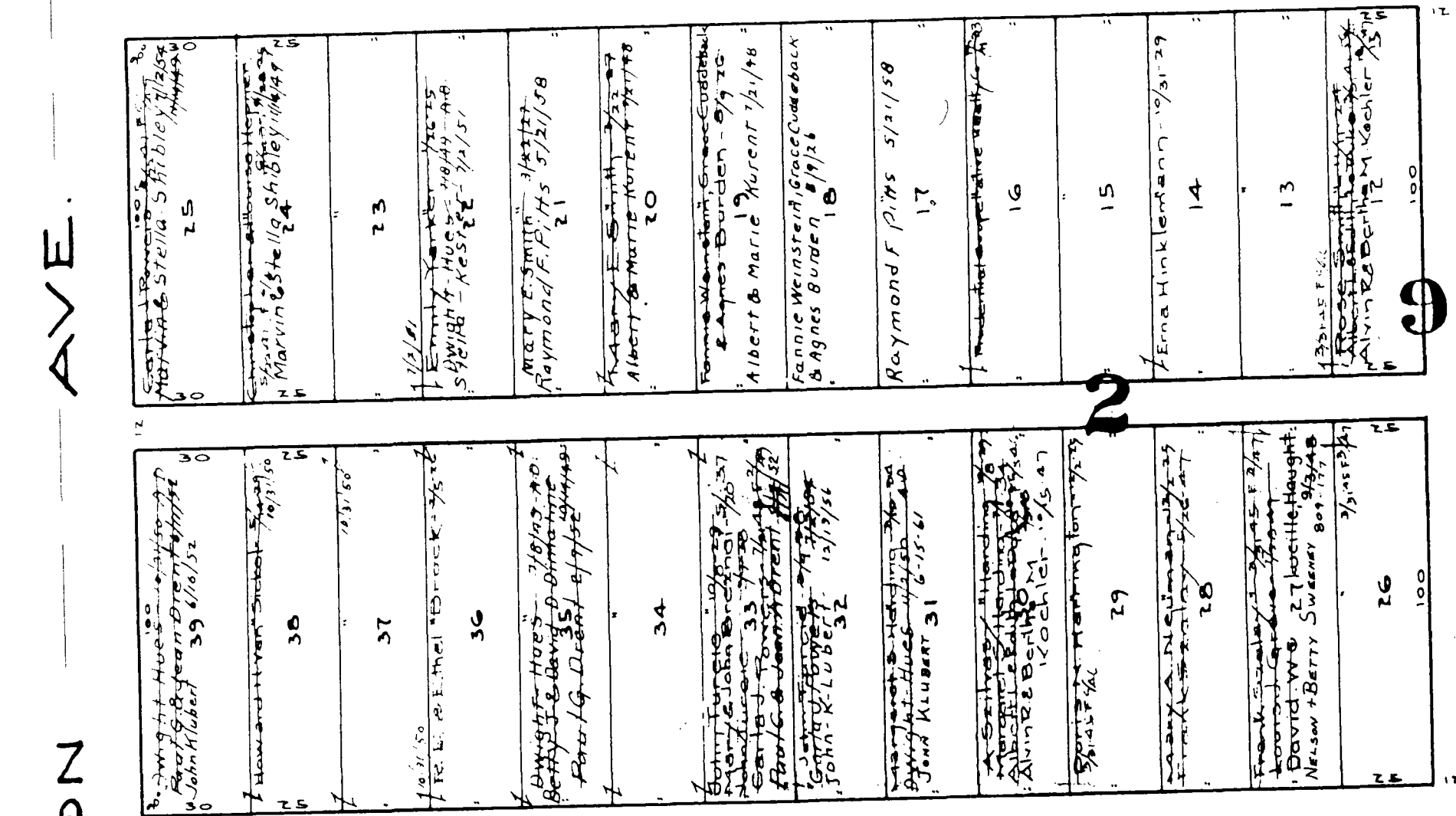
3

C. & S. W. RY. CO.
Cherry Valley Farms, Inc.

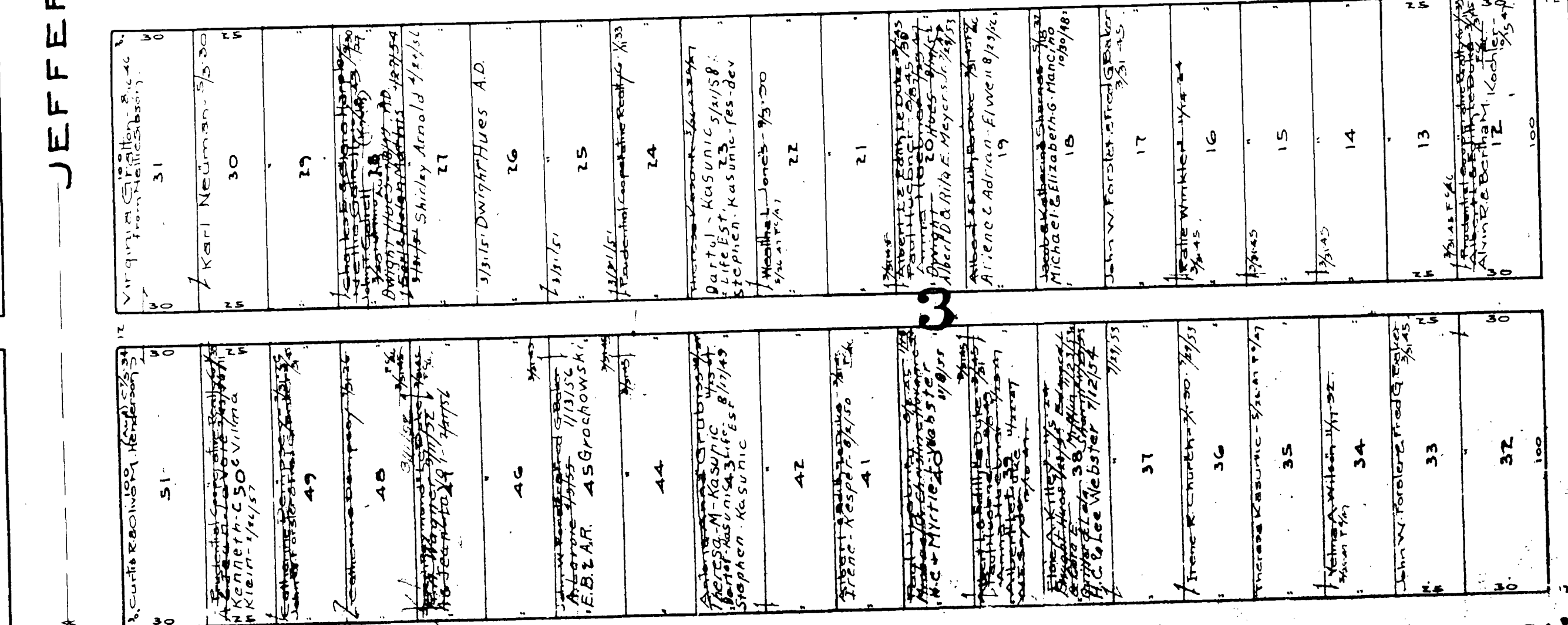
WASHINGTON BLVD. 40'



LINCOLN AVE 40'



HARDING BLVD. 40'



ADAMS AVE. 28.61'

STETSON

(LEAR-NAGEL)

ROAD

Ridgeville Heights No 2 Vol. 11 Pg 15 & 16
Lots in blank - Commonwealth Co Operative City Co

RIDGEVILLE TOWNSHIP

COPYRIGHT 1962
U.S. CODE, TITLE 17
LORAIN COUNTY, OHIO
Reproduced by,
Allied Microfilm Corp.
Akron, Ohio

RIDGEVILLE TOWNSHIP

COPYRIGHT 1962 U.S. CODE, TITLE 17 LORAIN COUNTY, OHIO

Reproduced by Allied Microfilm Corp. Akron, Ohio

Ridgeville Heights No 2 Vol 11 Pgs 15 & 16
Lots in blank-Commonwealth Co Operative Rlty Co

C. & S. W. RY 30'

WASHINGTON BLVD 40'

31	William K. Miller - 7/29/20
30	Jack E. Sweeney - 1/1/20
29	John J. Neuman - 8/18/58
28	John & Rose Cloninger - 12/1/52
27	Mary A. Sweeney - 1/1/20
26	Theresa D. Tom - 8-0-60
25	Adrian & Irene E. Eichel - 1/1/51
24	Theresa D. Tom - 8-0-60
23	Theresa D. Tom - 8-0-60
22	Theresa D. Tom - 8-0-60
21	Theresa D. Tom - 8-0-60

19	Pauline E. Sweeney - 1/1/20
18	William & Rose Cloninger - 12/1/52
16	Howard C. Kline - 7/21/27
15	Howard C. Kline - 7/21/27
14	Howard C. Kline - 7/21/27
13	Howard C. Kline - 7/21/27
12	Howard C. Kline - 7/21/27
10	Howard C. Kline - 7/21/27
8	Howard C. Kline - 7/21/27
6	Howard C. Kline - 7/21/27
5	Howard C. Kline - 7/21/27
4	Howard C. Kline - 7/21/27
3	Howard C. Kline - 7/21/27
2	Howard C. Kline - 7/21/27
1	Howard C. Kline - 7/21/27

LINCOLN

AVE 40'

11	Theresa D. Tom - 8-0-60
10	Theresa D. Tom - 8-0-60
9	Theresa D. Tom - 8-0-60
8	Theresa D. Tom - 8-0-60
7	Theresa D. Tom - 8-0-60
6	Theresa D. Tom - 8-0-60
4	Theresa D. Tom - 8-0-60
3	Theresa D. Tom - 8-0-60
2	Theresa D. Tom - 8-0-60
1	Theresa D. Tom - 8-0-60

20	Theresa D. Tom - 8-0-60
18	Theresa D. Tom - 8-0-60
17	Theresa D. Tom - 8-0-60
16	Theresa D. Tom - 8-0-60
15	Theresa D. Tom - 8-0-60
14	Theresa D. Tom - 8-0-60
13	Theresa D. Tom - 8-0-60
11	Theresa D. Tom - 8-0-60
10	Theresa D. Tom - 8-0-60
9	Theresa D. Tom - 8-0-60
8	Theresa D. Tom - 8-0-60
7	Theresa D. Tom - 8-0-60
6	Theresa D. Tom - 8-0-60
5	Theresa D. Tom - 8-0-60
4	Theresa D. Tom - 8-0-60
3	Theresa D. Tom - 8-0-60
2	Theresa D. Tom - 8-0-60
1	Theresa D. Tom - 8-0-60

HARDING

BLVD 40'

11	Carl J. Powers - 7/19/50
10	Thomas E. Sweeney - 1/1/20
9	Thomas E. Sweeney - 1/1/20
8	Thomas E. Sweeney - 1/1/20
7	Thomas E. Sweeney - 1/1/20
5	Thomas E. Sweeney - 1/1/20
4	Thomas E. Sweeney - 1/1/20
2	Thomas E. Sweeney - 1/1/20
1	Thomas E. Sweeney - 1/1/20

20	Theresa D. Tom - 8-0-60
18	Theresa D. Tom - 8-0-60
17	Theresa D. Tom - 8-0-60
16	Theresa D. Tom - 8-0-60
15	Theresa D. Tom - 8-0-60
14	Theresa D. Tom - 8-0-60
13	Theresa D. Tom - 8-0-60
12	Theresa D. Tom - 8-0-60
11	Theresa D. Tom - 8-0-60
10	Theresa D. Tom - 8-0-60
9	Theresa D. Tom - 8-0-60
8	Theresa D. Tom - 8-0-60
7	Theresa D. Tom - 8-0-60
5	Theresa D. Tom - 8-0-60
4	Theresa D. Tom - 8-0-60
3	Theresa D. Tom - 8-0-60
2	Theresa D. Tom - 8-0-60
1	Theresa D. Tom - 8-0-60

ADAMS

AVE 28.61'

40'

MADISON AVE

40'

40'

40'

40'

40'

40'

40'

40'

40'

40'

40'

40'

40'

40'

40'

40'

40'

40'

40'

40'

40'

40'

40'

40'

40'

40'

40'

40'

40'

40'

40'

40'

40'

40'

40'

40'

40'

40'

40'

40'

40'

40'

40'

40'

40'

40'

40'

40'

40'

40'

40'

40'

40'

40'

40'

40'

40'

40'

40'

40'

40'

40'

40'

40'

40'

40'

40'

40'

40'

40'

40'

40'

40'

40'

40'

40'

40'

40'

40'

40'

40'

40'

40'

40'

40'

40'

40'

40'

40'

40'

40'

40'

40'

40'

40'

40'

40'

40'

40'

40'

40'

40'

40'

40'

40'

40'

40'

40'

40'

40'

40'

40'

40'

40'

40'

40'

40'

40'

40'

40'

40'

40'

40'

40'

40'

40'

40'

40'

40'

40'

40'

40'

40'

40'

40'

40'

40'

40'

40'

40'

40'

40'

40'

40'

40'

40'

40'

40'

40'

40'

40'

40'

40'

40'

40'

40'

40'

40'

40'

40'

40'

40'

40'

40'

40'

40'

40'

40'

40'

40'

40'

40'

40'

40'

40'

40'

40'

40'

40'

40'

40'

40'

40'

40'

40'

40'

40'

40'

40'

40'

40'

40'

40'

40'

40'

40'

40'

40'

40'

40'

40'

40'

40'

40'

40'

40'

40'

40'

40'

40'

40'

40'

40'

40'

40'

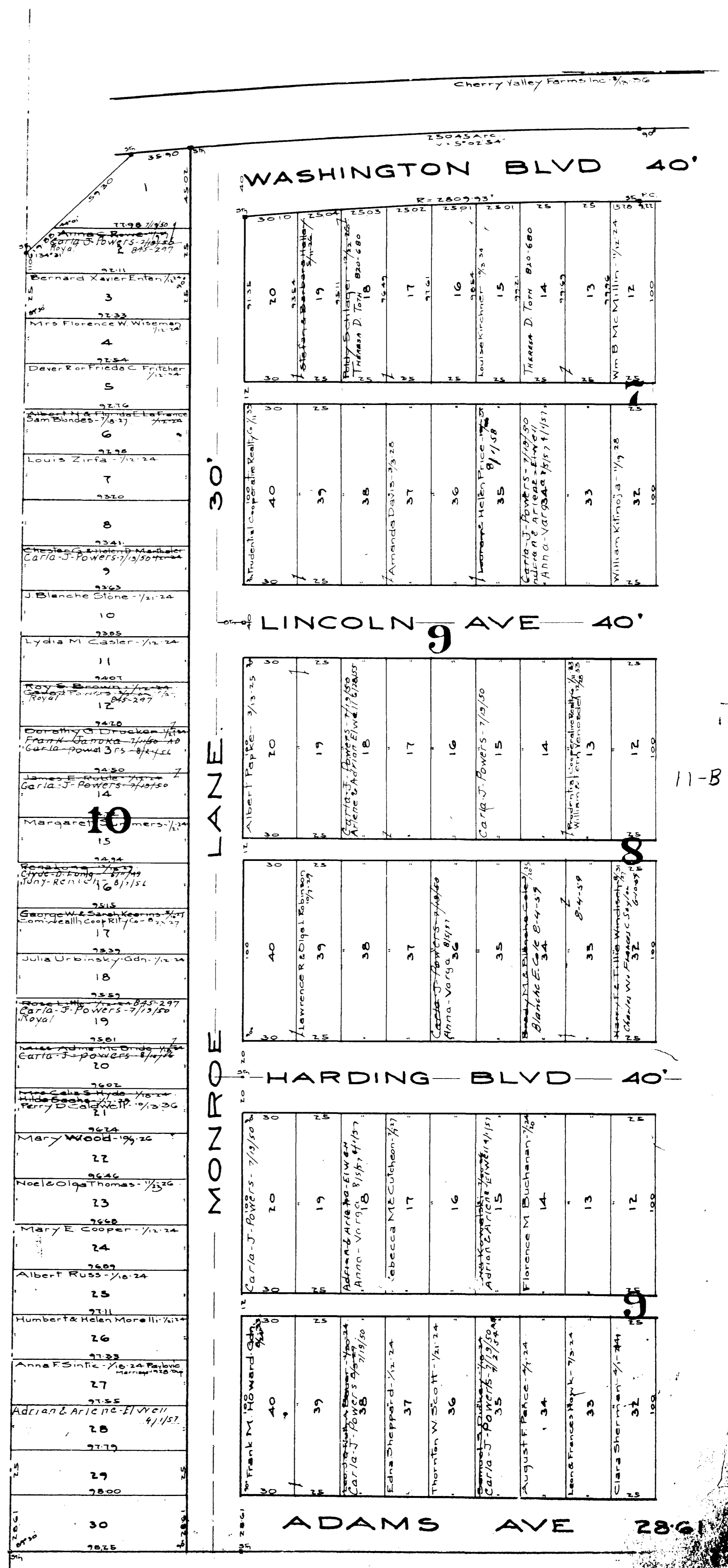
40'

40'

40'

40'

40'



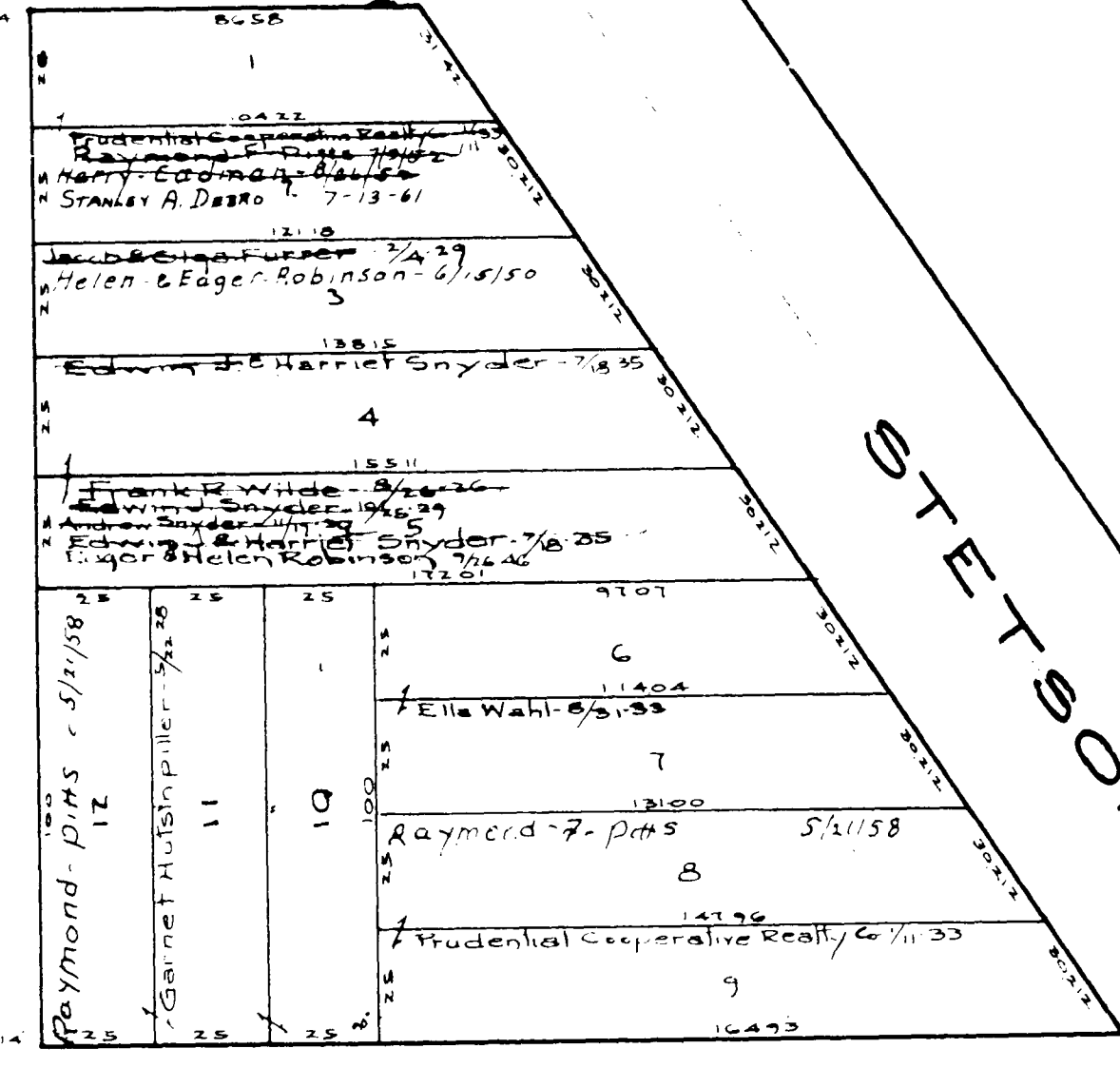
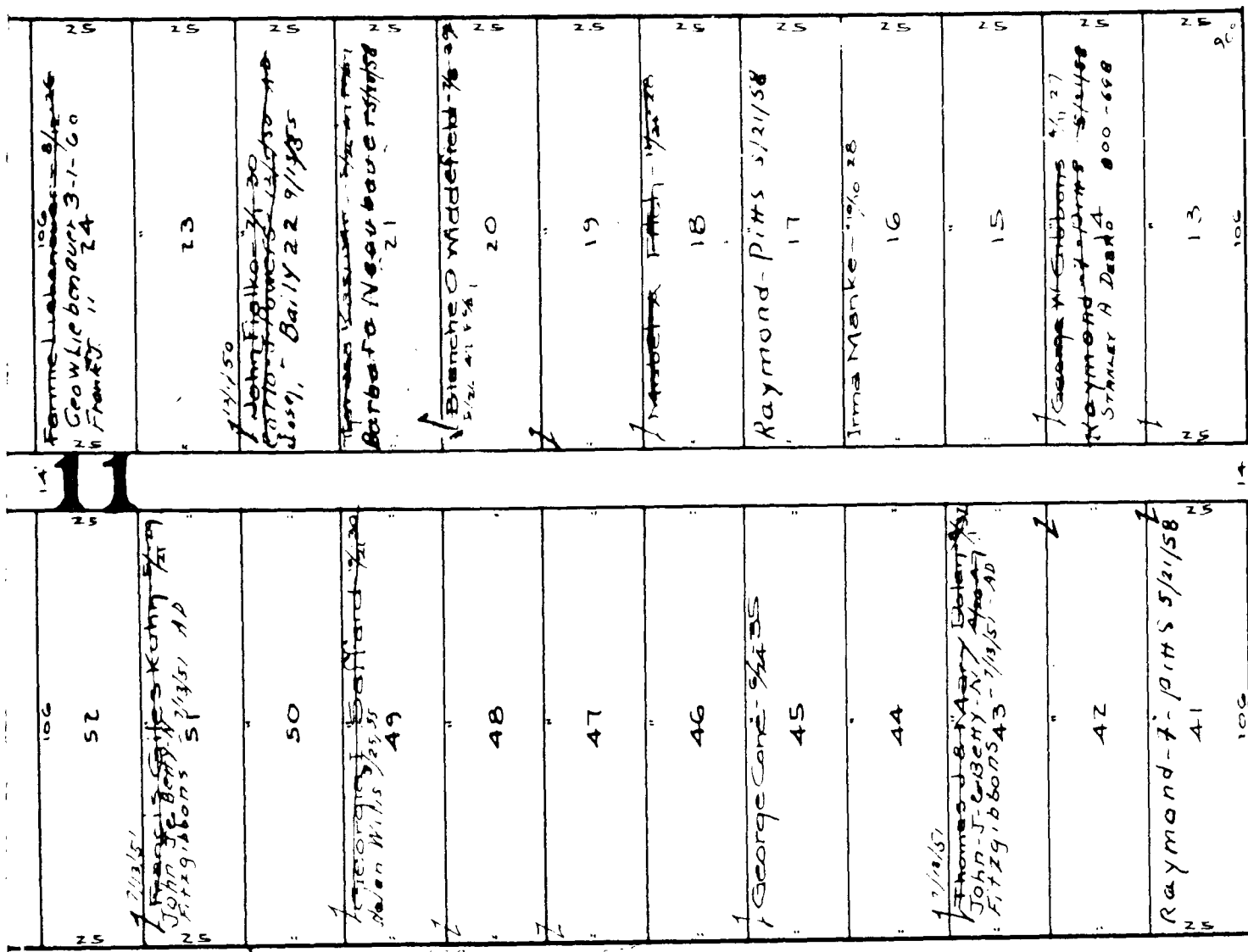
RIDGEVILLE TOWNSHIP

COPYRIGHT 1962
 U.S. CODE, TITLE 17
 LORAIN COUNTY, OHIO

Reproduced by,
 Allied Microfilm Corp.
 Akron, Ohio

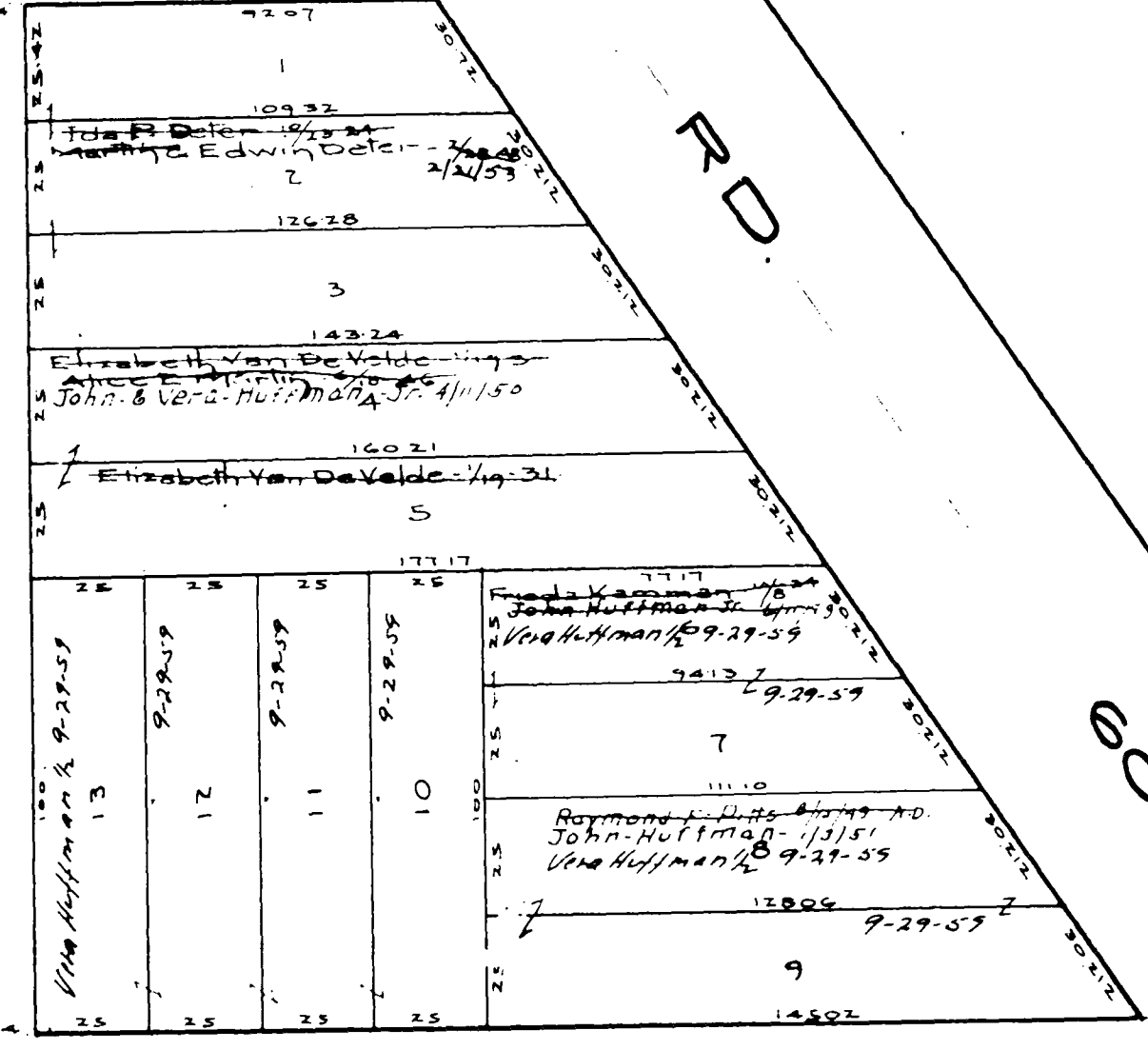
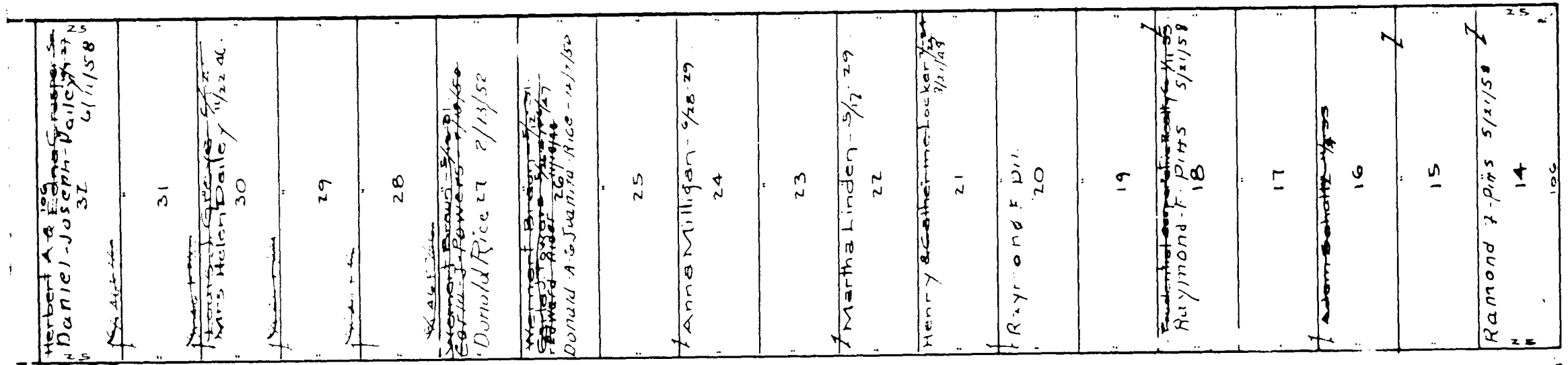
11-B

ADAMS AVE 40'

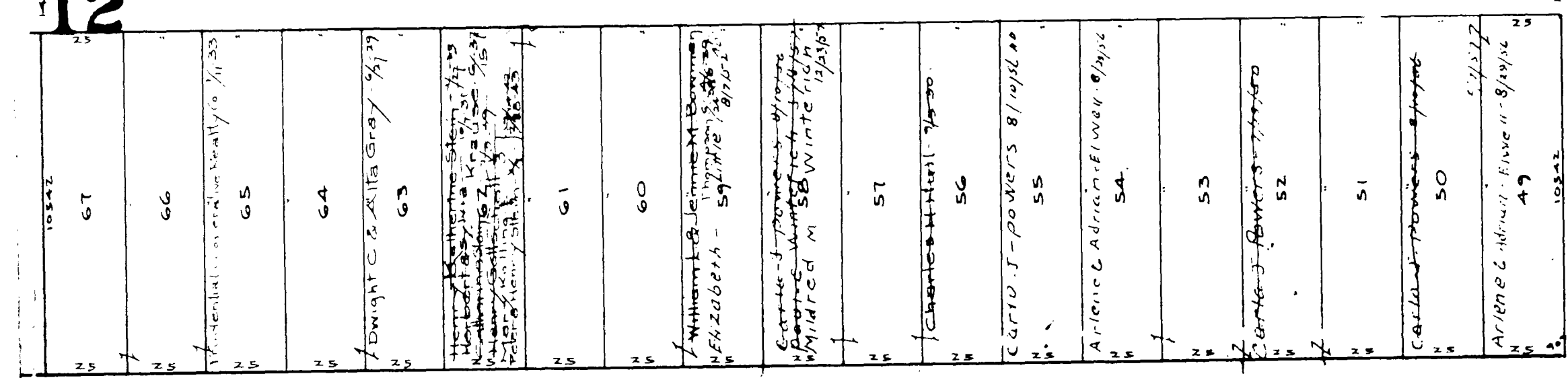


Addition to Ridgeville Heights No 2 Vol 11 Pg 23
Lots in blank: The Commonwealth Cooperative Realty Co.

GLORIA AVE 40'



FLORALINE AVE 40'



RIDGEVILLE TOWNSHIP

COPYRIGHT 1962
U.S. CODE, TITLE 17
LORAIN COUNTY, OHIO
Reproduced by,
Allied Microfilm Corp.
Akron, Ohio

ADAMS AVE

40'

1	105.42	15	105.42
2	35	16	105.42
3	34	17	105.42
4	33	18	105.42
5	32	19	105.42
6	31	20	105.42
7	30	21	105.42
8	29	22	105.42
9	28	23	105.42
10	27	24	105.42
11	26	25	105.42
12	25	26	105.42
13	24	27	105.42
14	23	28	105.42
15	22	29	105.42
16	21	30	105.42
17	20	31	105.42
18	19	32	105.42
19	18	33	105.42
20	17	34	105.42
21	16	35	105.42
22	15	36	105.42
23	14	37	105.42
24	13	38	105.42
25	12	39	105.42
26	11	40	105.42
27	10	41	105.42
28	9	42	105.42
29	8	43	105.42
30	7	44	105.42
31	6	45	105.42
32	5	46	105.42
33	4	47	105.42
34	3	48	105.42
35	2	49	105.42
36	1	50	105.42

GLORIA AVE

40'

1	105.42	15	105.42
2	35	16	105.42
3	34	17	105.42
4	33	18	105.42
5	32	19	105.42
6	31	20	105.42
7	30	21	105.42
8	29	22	105.42
9	28	23	105.42
10	27	24	105.42
11	26	25	105.42
12	25	26	105.42
13	24	27	105.42
14	23	28	105.42
15	22	29	105.42
16	21	30	105.42
17	20	31	105.42
18	19	32	105.42
19	18	33	105.42
20	17	34	105.42
21	16	35	105.42
22	15	36	105.42
23	14	37	105.42
24	13	38	105.42
25	12	39	105.42
26	11	40	105.42
27	10	41	105.42
28	9	42	105.42
29	8	43	105.42
30	7	44	105.42
31	6	45	105.42
32	5	46	105.42
33	4	47	105.42
34	3	48	105.42
35	2	49	105.42
36	1	50	105.42

FLORALINE AVE

40'

1	105.42	15	105.42
2	35	16	105.42
3	34	17	105.42
4	33	18	105.42
5	32	19	105.42
6	31	20	105.42
7	30	21	105.42
8	29	22	105.42
9	28	23	105.42
10	27	24	105.42
11	26	25	105.42
12	25	26	105.42
13	24	27	105.42
14	23	28	105.42
15	22	29	105.42
16	21	30	105.42
17	20	31	105.42
18	19	32	105.42
19	18	33	105.42
20	17	34	105.42
21	16	35	105.42
22	15	36	105.42
23	14	37	105.42
24	13	38	105.42
25	12	39	105.42
26	11	40	105.42
27	10	41	105.42
28	9	42	105.42
29	8	43	105.42
30	7	44	105.42
31	6	45	105.42
32	5	46	105.42
33	4	47	105.42
34	3	48	105.42
35	2	49	105.42
36	1	50	105.42

40'

AVE

JEFFERSON

1	105.42	15	105.42
2	35	16	105.42
3	34	17	105.42
4	33	18	105.42
5	32	19	105.42
6	31	20	105.42
7	30	21	105.42
8	29	22	105.42
9	28	23	105.42
10	27	24	105.42
11	26	25	105.42
12	25	26	105.42
13	24	27	105.42
14	23	28	105.42
15	22	29	105.42
16	21	30	105.42
17	20	31	105.42
18	19	32	105.42
19	18	33	105.42
20	17	34	105.42
21	16	35	105.42
22	15	36	105.42
23	14	37	105.42
24	13	38	105.42
25	12	39	105.42
26	11	40	105.42
27	10	41	105.42
28	9	42	105.42
29	8	43	105.42
30	7	44	105.42
31	6	45	105.42
32	5	46	105.42
33	4	47	105.42
34	3	48	105.42
35	2	49	105.42
36	1	50	105.42

1	105.42	15	105.42
2	35	16	105.42
3	34	17	105.42
4	33	18	105.42
5	32	19	105.42
6	31	20	105.42
7	30	21	105.42
8	29	22	105.42
9	28	23	105.42
10	27	24	105.42
11	26	25	105.42
12	25	26	105.42
13	24	27	105.42
14	23	28	105.42
15	22	29	105.42
16	21	30	105.42
17	20	31	105.42
18	19	32	105.42
19	18	33	105.42
20	17	34	105.42
21	16	35	105.42
22	15	36	105.42
23	14	37	105.42
24	13	38	105.42
25	12	39	105.42
26	11	40	105.42
27	10	41	105.42
28	9	42	105.42
29	8	43	105.42
30	7	44	105.42
31	6	45	105.42
32	5	46	105.42
33	4	47	105.42
34	3	48	105.42
35	2	49	105.42
36	1	50	105.42

40'

40'

1	105.42	15	105.42
2	35	16	105.42
3	34	17	105.42
4	33	18	105.42
5	32	19	105.42
6	31	20	105.42
7	30	21	105.42
8	29	22	105.42
9	28	23	105.42
10	27	24	105.42
11	26	25	105.42
12	25	26	105.42
13	24	27	105.42
14	23	28	105.42
15	22	29	105.42
16	21	30	105.42
17	20	31	105.42
18	19	32	105.42
19	18	33	105.42
20	17	34	105.42
21	16	35	105.42
22	15	36	105.42
23	14	37	105.42
24	13	38	105.42
25	12	39	105.42
26	11	40	105.42
27	10	41	105.42
28	9	42	105.42
29	8	43	105.42
30	7	44	105.42
31	6	45	105.42
32	5	46	105.42
33	4	47	105.42
34	3	48	105.42
35	2	49	105.42
36	1	50	105.42

1	105.42	15	105.42
2	35	16	105.42
3	34	17	105.42
4	33	18	105.42
5	32	19	105.42
6	31	20	105.42
7	30	21	105.42
8	29	22	105.42
9	28	23	105.42
10	27	24	105.42
11	26	25	105.42
12	25	26	105.42
13	24	27	105.42
14	23	28	105.42
15	22	29	105.42
16	21	30	105.42
17	20	31	105.42
18	19	32	105.42
19	18	33	105.42
20	17	34	105.42
21	16	35	105.42
22	15	36	105.42
23	14	37	105.42
24	13	38	105.42
25	12	39	105.42
26	11	40	105.42
27	10	41	105.42
28	9	42	105.42
29	8	43	105.42
30	7	44	105.42
31	6	45	105.42
32	5	46	105.42
33	4	47	105.42
34	3	48	105.42
35	2	49	105.42
36	1	50	105.42

COPYRIGHT 1962
U.S. CODE, TITLE 17
LORAIN COUNTY, OHIO

Reproduced by,
Allied Microfilm Corp.
Akron, Ohio

RIDGEVILLE
TOWNSHIP

Addition to Ridgeville Heights No. 2 Vol. II Pg. 23

Lots in blank: The Commonwealth Co-operative Bldg

ADAMS AVE 40'	MONROE LANE 30'	GLORIA AVE 40'	FLORALINE AVE 40'	MADISON AVE 40'
31 32 33 34 35	31 32 33 34 35	31 32 33 34 35	31 32 33 34 35	31 32 33 34 35
36 37 38 39 40	36 37 38 39 40	36 37 38 39 40	36 37 38 39 40	36 37 38 39 40
41 42 43 44 45 46 47 48 49 50 51 52 53	41 42 43 44 45 46 47 48 49 50 51 52 53	41 42 43 44 45 46 47 48 49 50 51 52 53	41 42 43 44 45 46 47 48 49 50 51 52 53	41 42 43 44 45 46 47 48 49 50 51 52 53

COPYRIGHT 1962
 U.S. CODE, TITLE 17
 LORAIN COUNTY, OHIO
 Reproduced by
 Allied Microfilm Corp.
 Akron, Ohio

RIDGEVILLE
 TOWNSHIP

Addition to Ridgeville Heights No. 2, Vol. 11, Pg. 23
 Lots in blank: The Commonwealth Co-operative Realty Co.

CHESTNUT RIDGE ESTATES NO. 2 VOL. 23, PG. 5

CHESTNUT RIDGE ESTATES NO. 3 VOL. 23, PG. 6

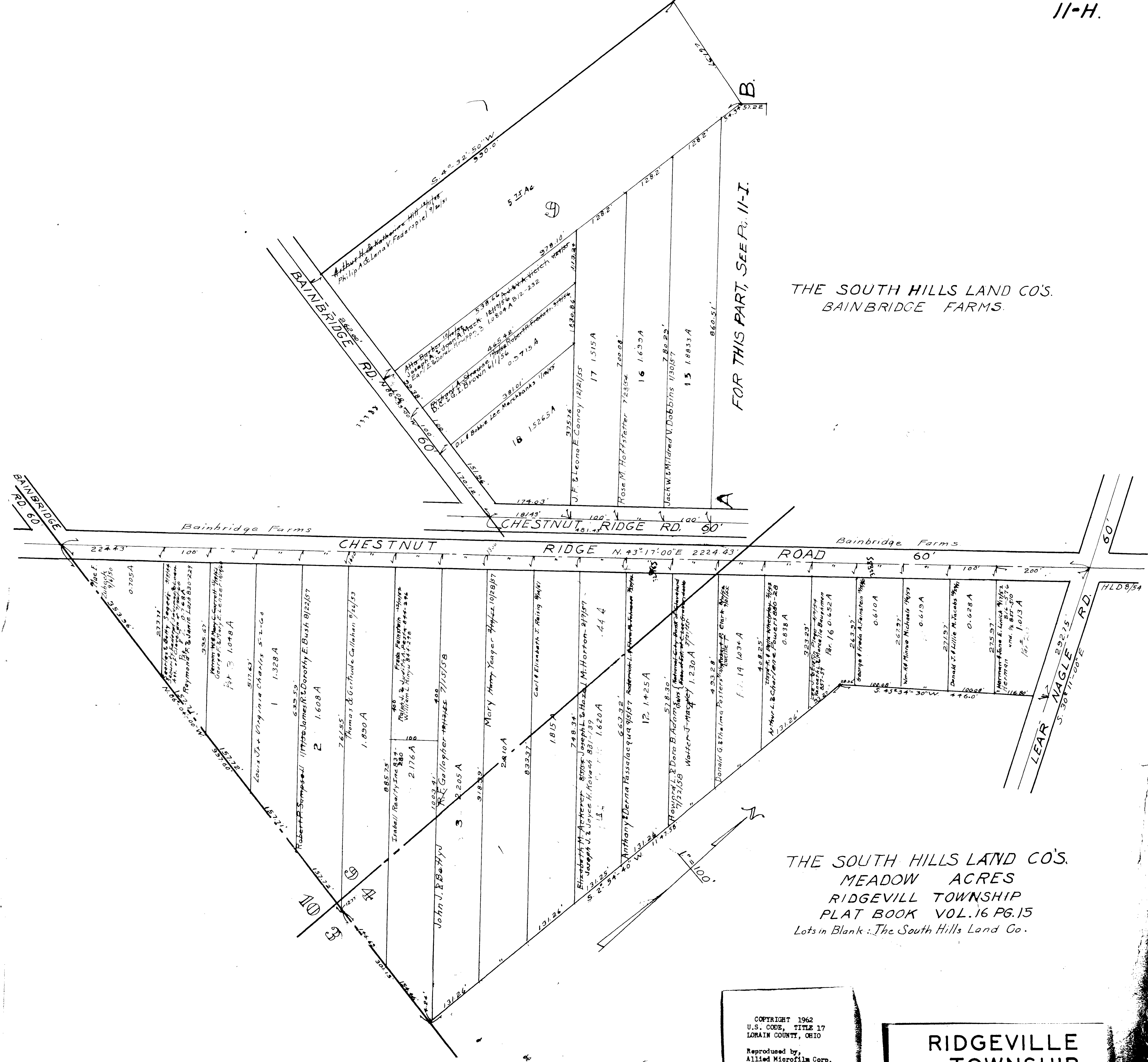
CHESTNUT RIDGE ESTATES VOL. 22 PG. 88

COPYRIGHT 1962 U.S. CODE, TITLE 17 LOHAIN COUNTY, OHIO Reproduced by Allied Microfilm Corp. Akron, Ohio

RIDGEVILLE TOWNSHIP



Scale 1" = 200'



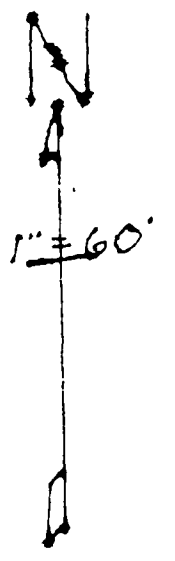
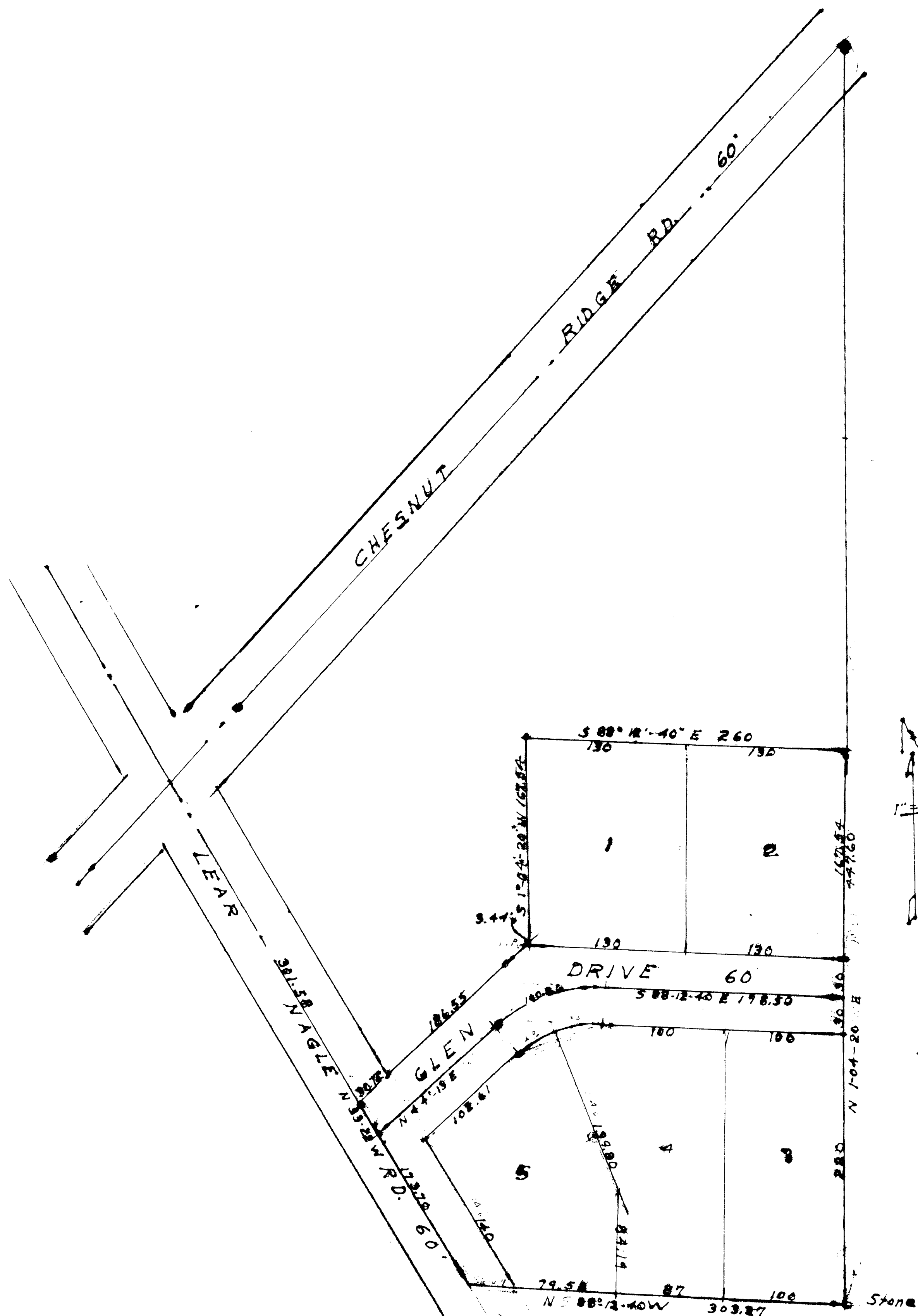
THE SOUTH HILLS LAND CO'S.
BAINBRIDGE FARMS.

FOR THIS PART, SEE P. 11-I.

THE SOUTH HILLS LAND CO'S.
MEADOW ACRES
RIDGEVILLE TOWNSHIP
PLAT BOOK VOL. 16 PG. 15
Lots in Blank: The South Hills Land Co.

COPYRIGHT 1962
U.S. CODE, TITLE 17
LORAIN COUNTY, OHIO
Reproduced by,
Allied Microfilm Corp.
Akron, Ohio

RIDGEVILLE
TOWNSHIP

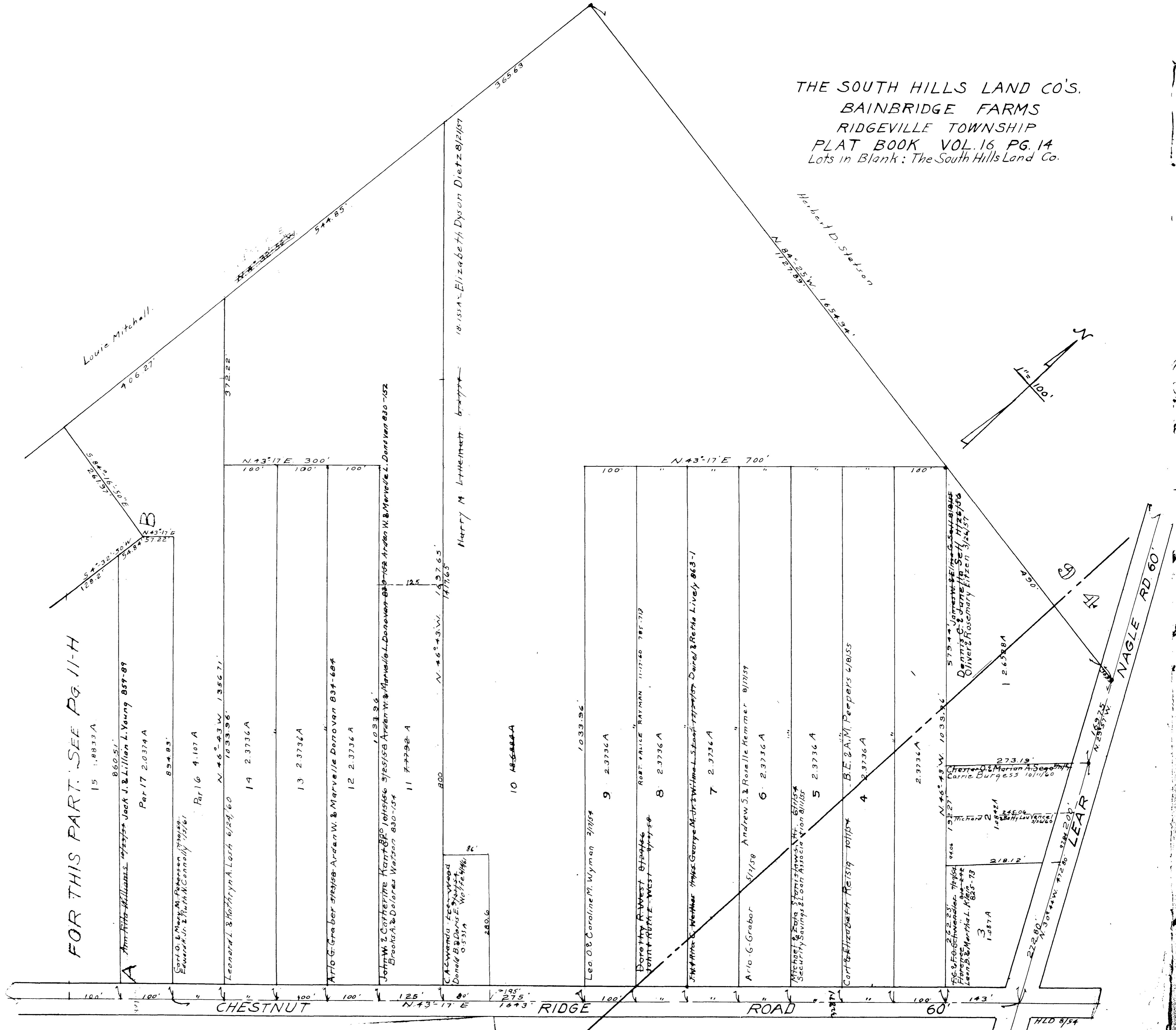


WINTERFIELD SUBN. No 1 Vol. 21 Pg 6
 O.L. 4 RIDGEVILLE TWP. Lots in Blank: William Winterfield

COPYRIGHT 1962
 U.S. CODE, TITLE 17
 LORAIN COUNTY, OHIO
 Reproduced by,
 Allied Microfilm Corp.
 Akron, Ohio

RIDGEVILLE
 TOWNSHIP

THE SOUTH HILLS LAND CO'S.
BAINBRIDGE FARMS
RIDGEVILLE TOWNSHIP
PLAT BOOK VOL. 16 PG. 14
Lots in Blank: The South Hills Land Co.



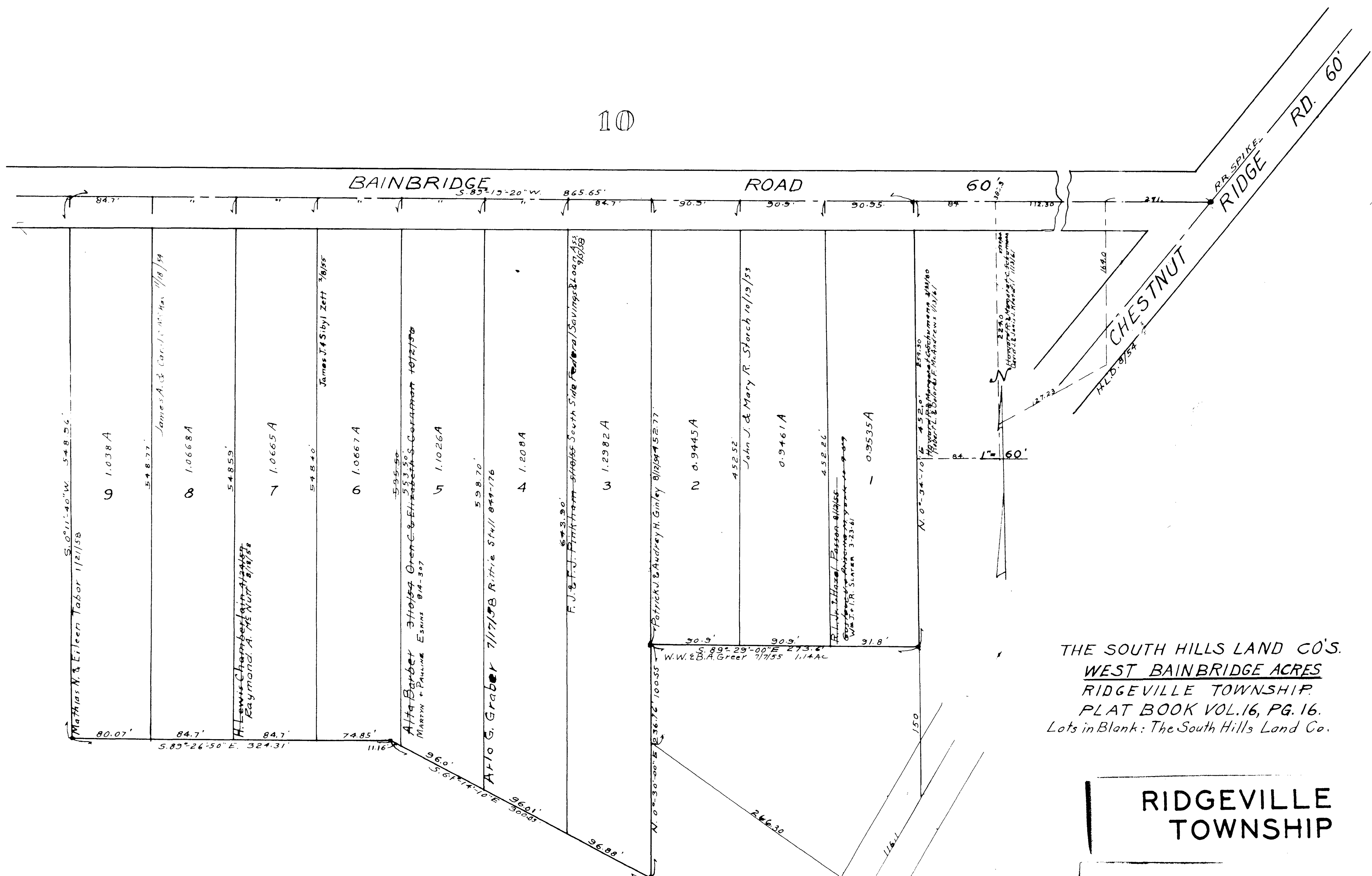
FOR THIS PART. SEE PG. 11-H

RIDGEVILLE
TOWNSHIP

COPYRIGHT 1962
U.S. CODE, TITLE 17
LORAIN COUNTY, OHIO

Reproduced by
Allied Microfilm Corp.
Akron, Ohio

10



THE SOUTH HILLS LAND CO'S.
 WEST BAINBRIDGE ACRES
 RIDGEVILLE TOWNSHIP.
 PLAT BOOK VOL. 16, PG. 16.
 Lots in Blank: The South Hills Land Co.

RIDGEVILLE TOWNSHIP

COPYRIGHT 1962
 U.S. CODE, TITLE 17
 LORAIN COUNTY, OHIO
 Reproduced by,
 Allied Microfilm Corp.
 Akron, Ohio