

11
 550' 125'
 778.49
 7.7651 A
 Ch 6 277
 E. R. 20
 Detail

DETAIL SCALE 1" = 200'
 Note For Dedication of Part in Yellow
 and Vacation of Part in Blue,
 See Road Rec 4 Page 432

MAP OF
 PITTSFIELD TOWNSHIP

COPYRIGHT 1962
 U.S. CODE, TITLE 17
 LORAIN COUNTY, OHIO
 Reproduced by,
 Allied Microfilm Corp.
 Akron, Ohio

18
 Total

1

PITTSFIELD TWP.

North Middle Part.

Scale 1"=400'

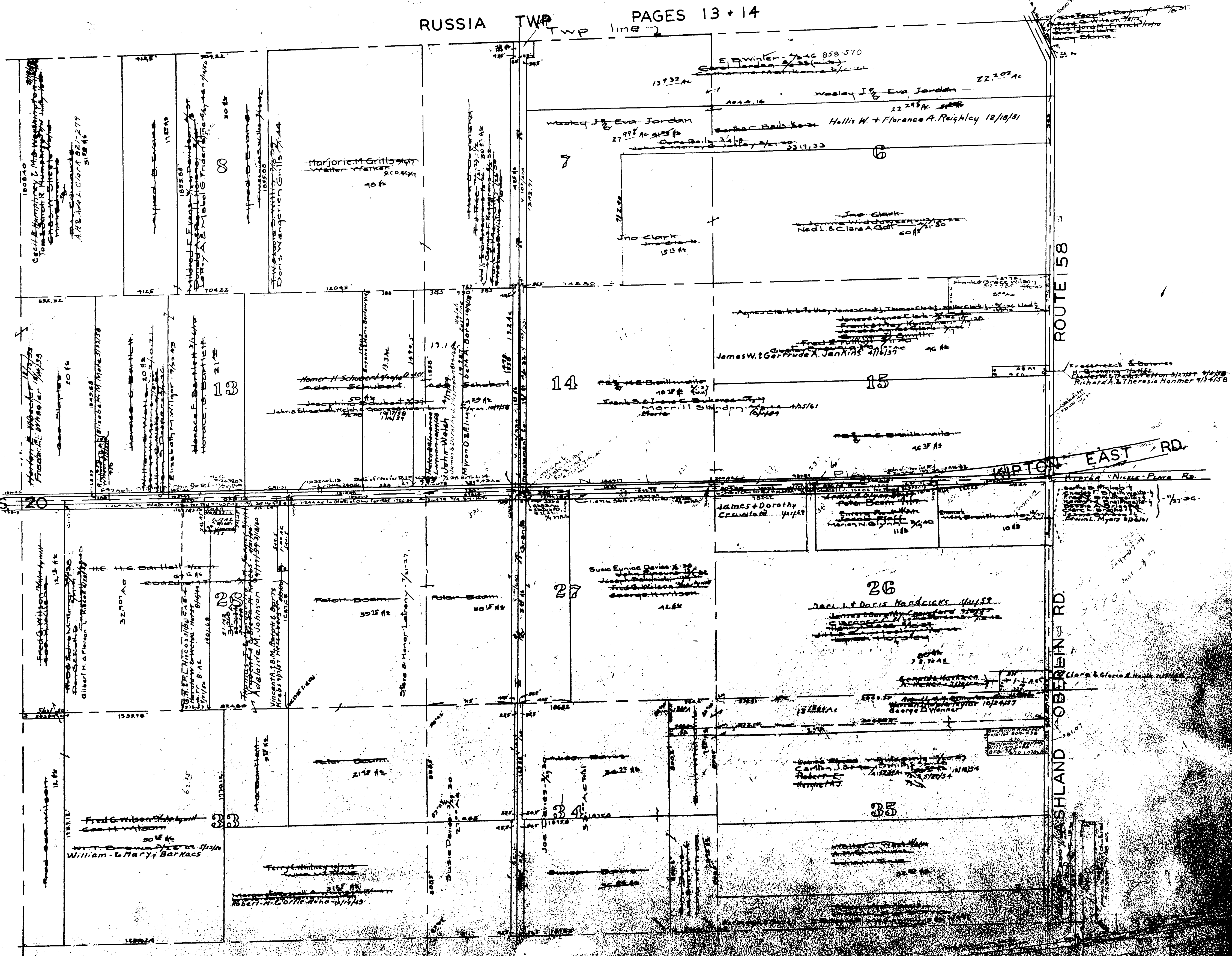
COPYRIGHT 1962
U.S. CODE, TITLE 17
LORAIN COUNTY, OHIO

Reproduced by,
Allied Microfilm Corp.
Akron, Ohio

MAP OF
PITTSFIELD TOWNSHIP

RUSSIA TWP. PAGES 13 + 14

PAGE 1



PAGE 2

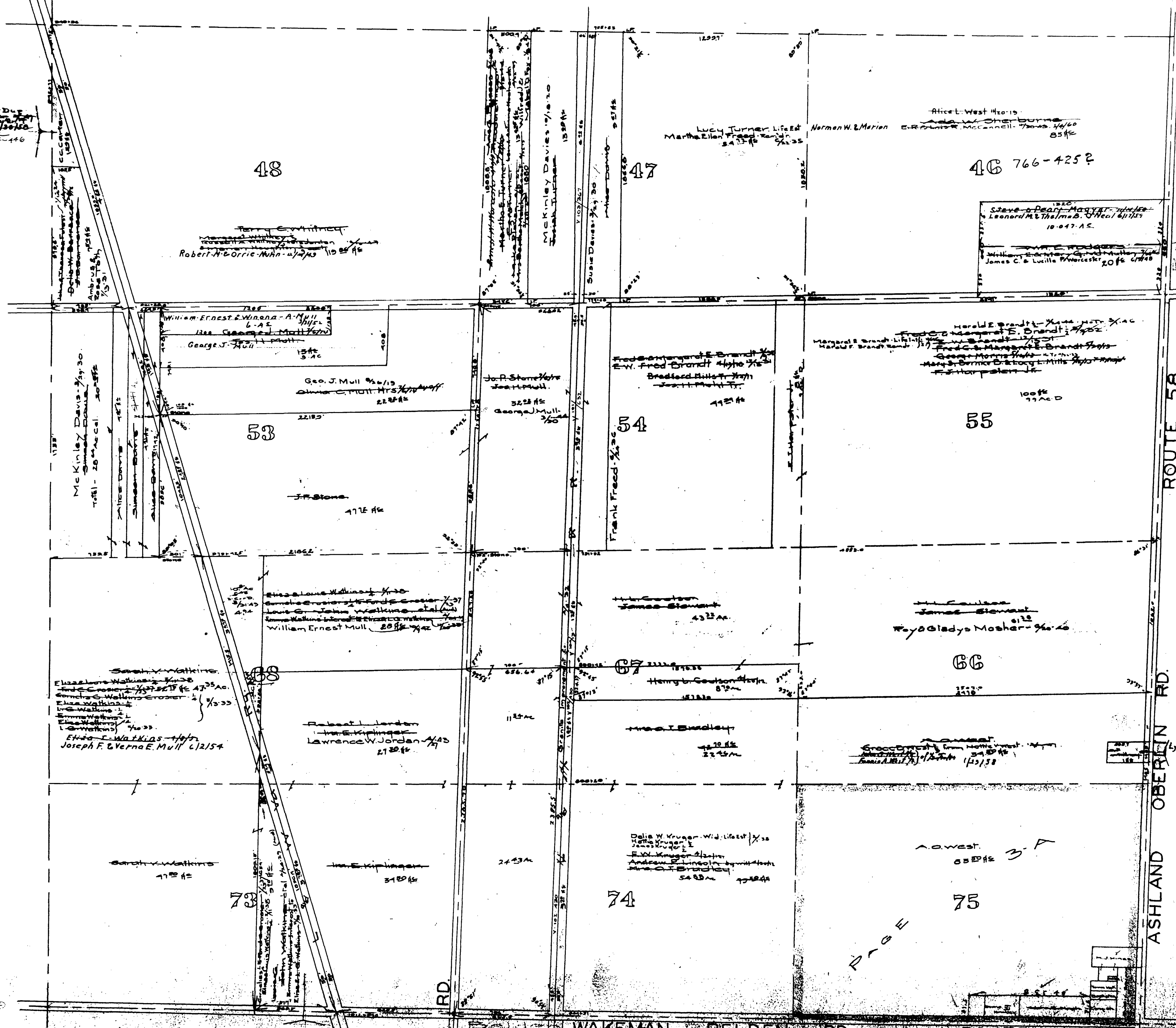
PITTSFIELD TWP.
Middle Part. Scale 1"=400'

PAGE 2

PAGE 4

PAGE 11

PAGE 6



HUGHES RD.

ROUTE 58

ASHLAND OBERLIN RD.

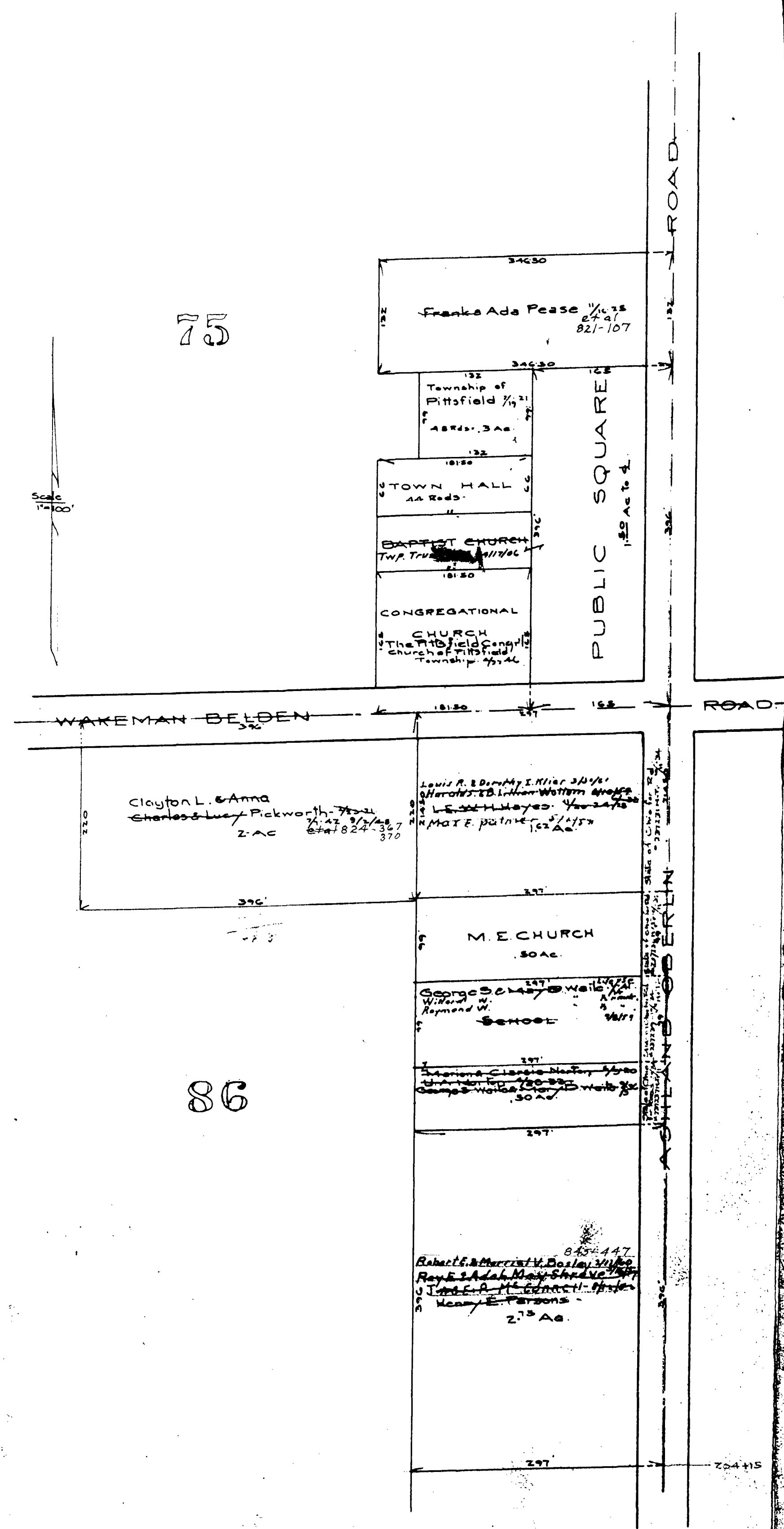
WAKEMAN BELDEN RD.

ROUTE 303

MAP OF
PITTSFIELD TOWNSHIP

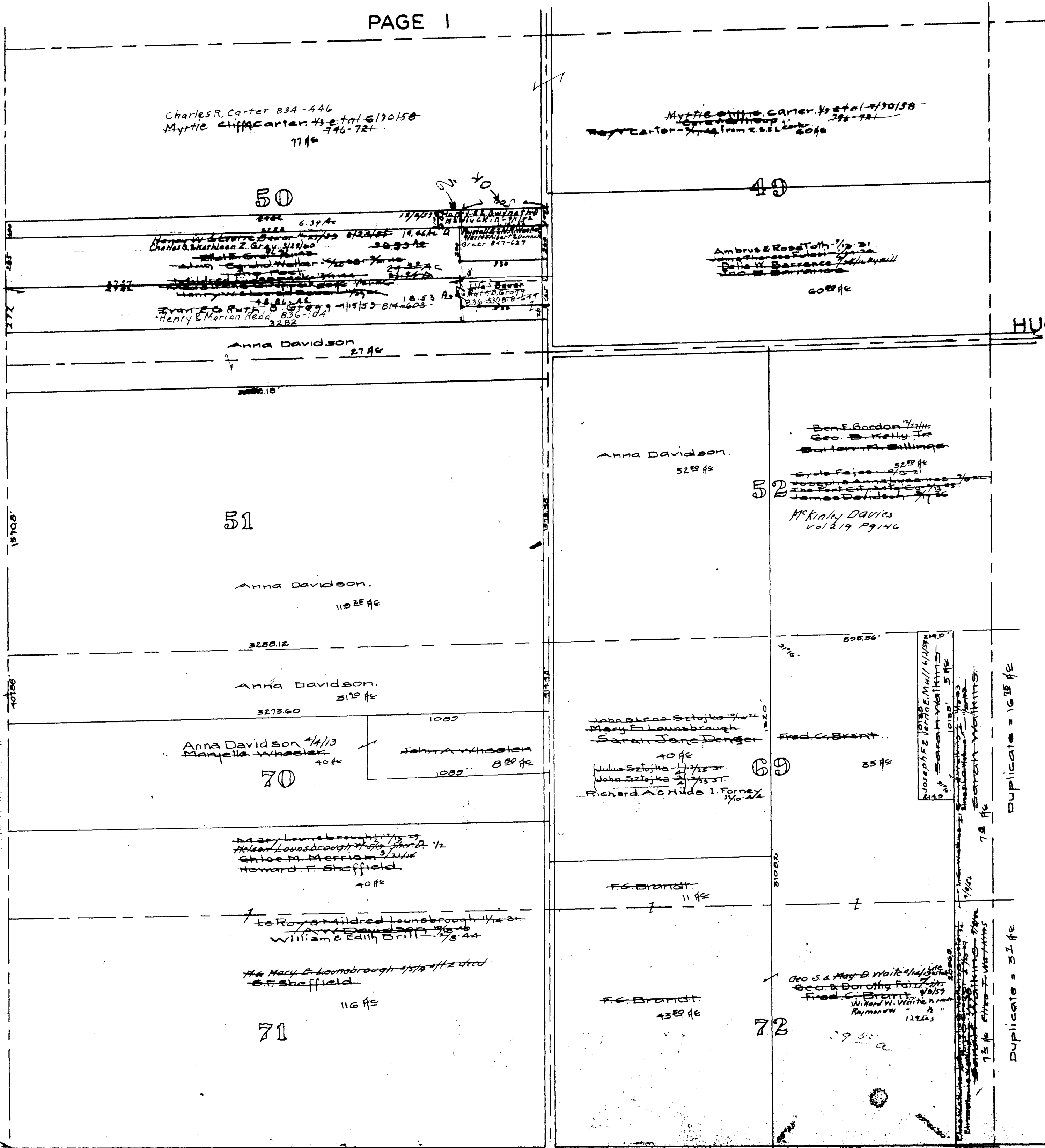
COPYRIGHT 1962
U.S. CODE, TITLE 17
LORAIN COUNTY, OHIO

Reproduced by,
Allied Microfilm Corp.
Akron, Ohio



COPYRIGHT 1962
 U.S. CODE, TITLE 17
 LORAIN COUNTY, OHIO

Reproduced by,
 Allied Microfilm Corp.
 Akron, Ohio



CAMDEN TWP. PAGES 4+7

HUGHES RD.

WAKEMAN BELDEN RD.

ROUTE 303

QUARRY RD.

PITTSFIELD TWP.

West Middle Part

Scale-1"=400'

PAGE 4

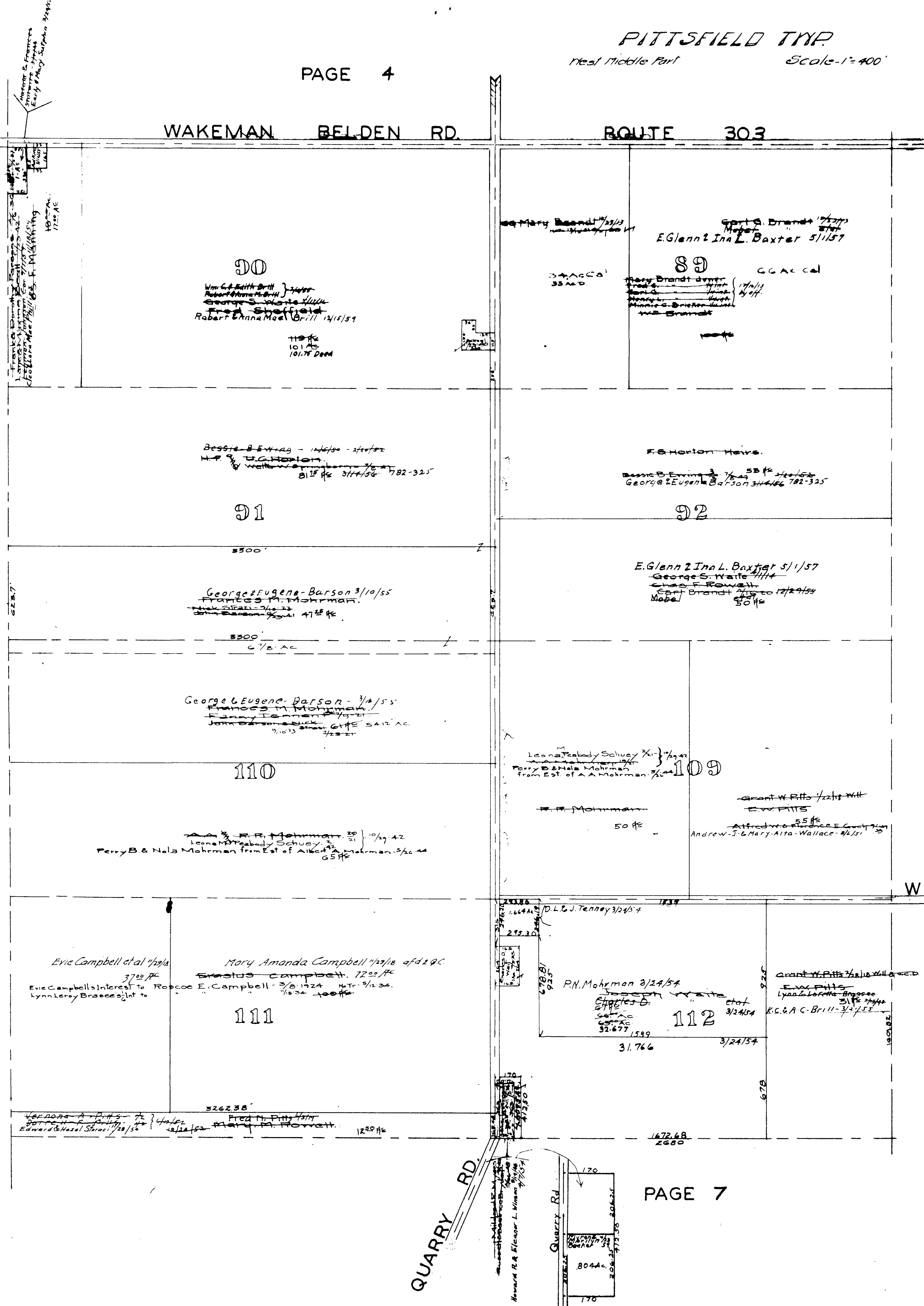
CAMDEN TWP.

PAGE 4

WAKEMAN BELDEN RD.

ROUTE 303

WHITNEY RD.



PAGE 6

MAP OF PITTSFIELD TOWNSHIP

COPYRIGHT 1962
 U.S. CODE, TITLE 17
 LORAIN COUNTY, OHIO
 Reproduced by,
 Allied Microfilm Corp.
 Akron, Ohio

PITTSFIELD TWP
Middle Part. Scale 1"=400'

PAGE 3

PAGE 5



Sheet 3
Sheet 86

PAGE 8

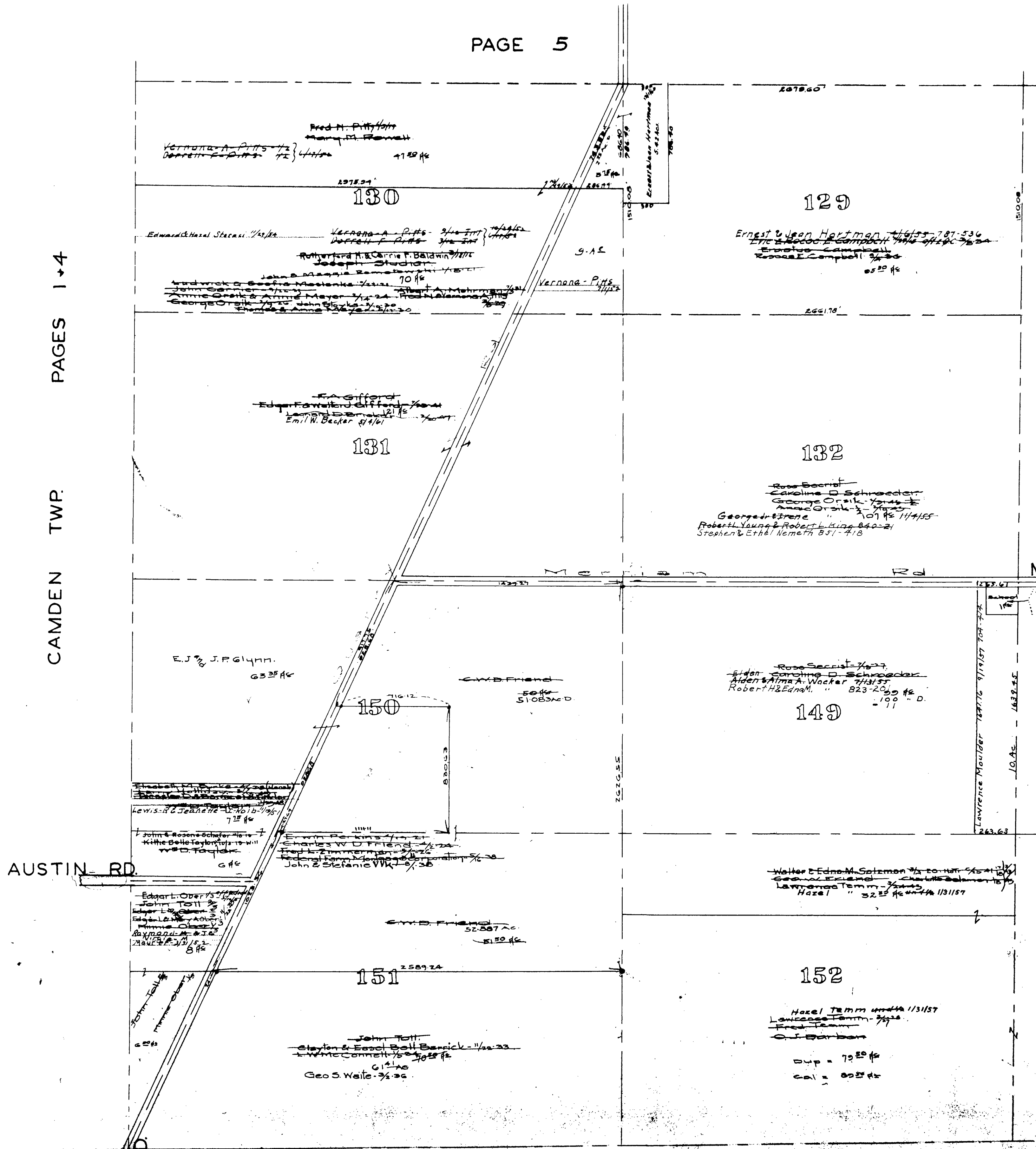
PAGE 10

MAP OF
PITTSFIELD TOWNSHIP

COPYRIGHT 1962
U.S. CODE, TITLE 17
LORAIN COUNTY, OHIO

Reproduced by,
Allied Microfilm Corp.
Akron, Ohio

CAMDEN TWP. PAGES 1 + 4



PAGE 6

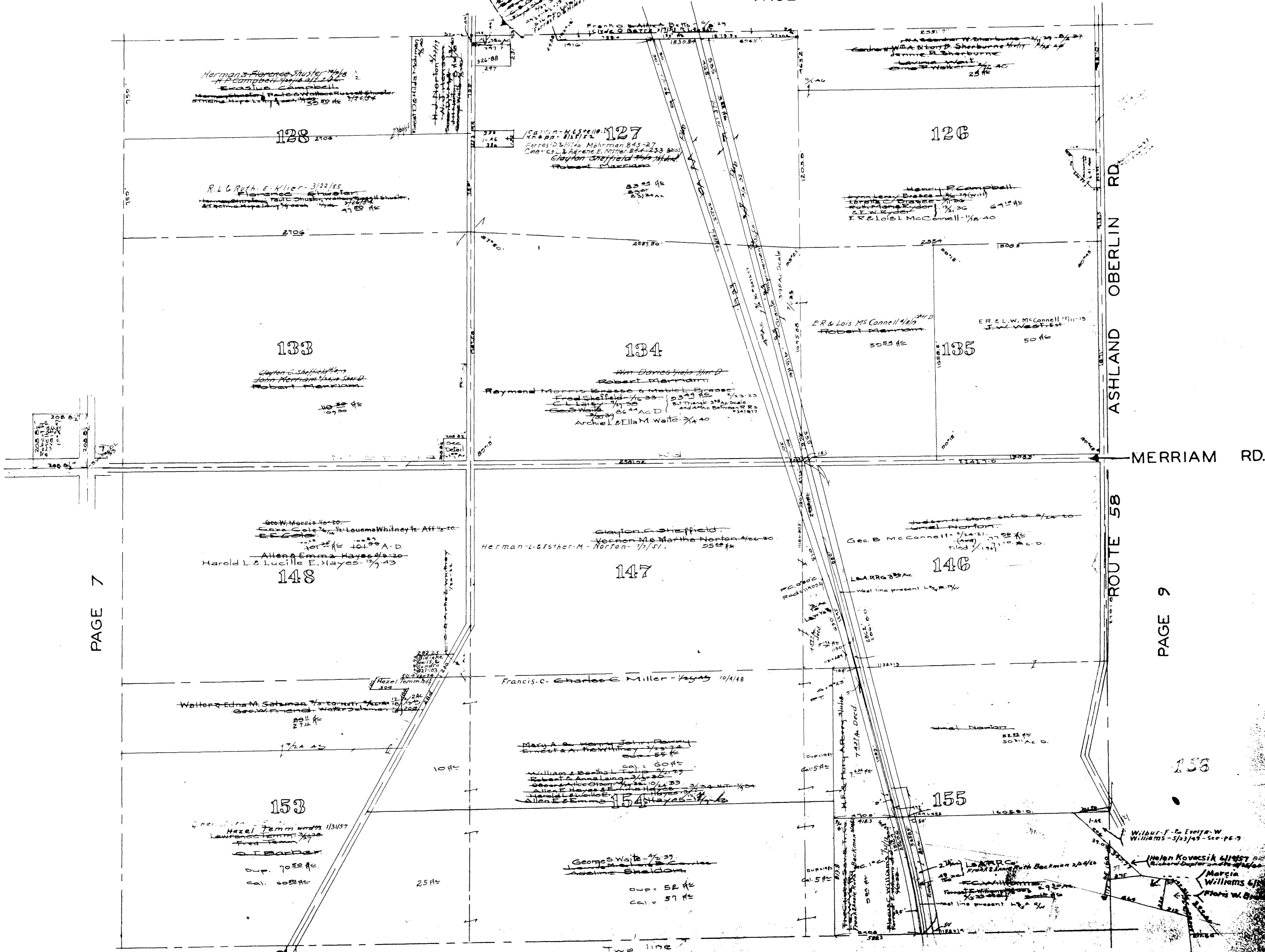
MAP OF
PITTSFIELD TOWNSHIP

COPYRIGHT 1962
U.S. CODE, TITLE 17
LORAIN COUNTY, OHIO

Reproduced by,
Allied Microfilm Corp.
Akron, Ohio

PITTSFIELD TWP.

Scale 1" = 400'



WELLINGTON TWP.

MAP OF PITTSFIELD TOWNSHIP

COPYRIGHT 1962
 U.S. CODE, TITLE 17
 LORAIN COUNTY, OHIO

Reproduced by,
 Allied Microfilm Corp.
 Akron, Ohio

PITTSFIELD TWP. South middle part. Scale 1"=400'

PAGE 10

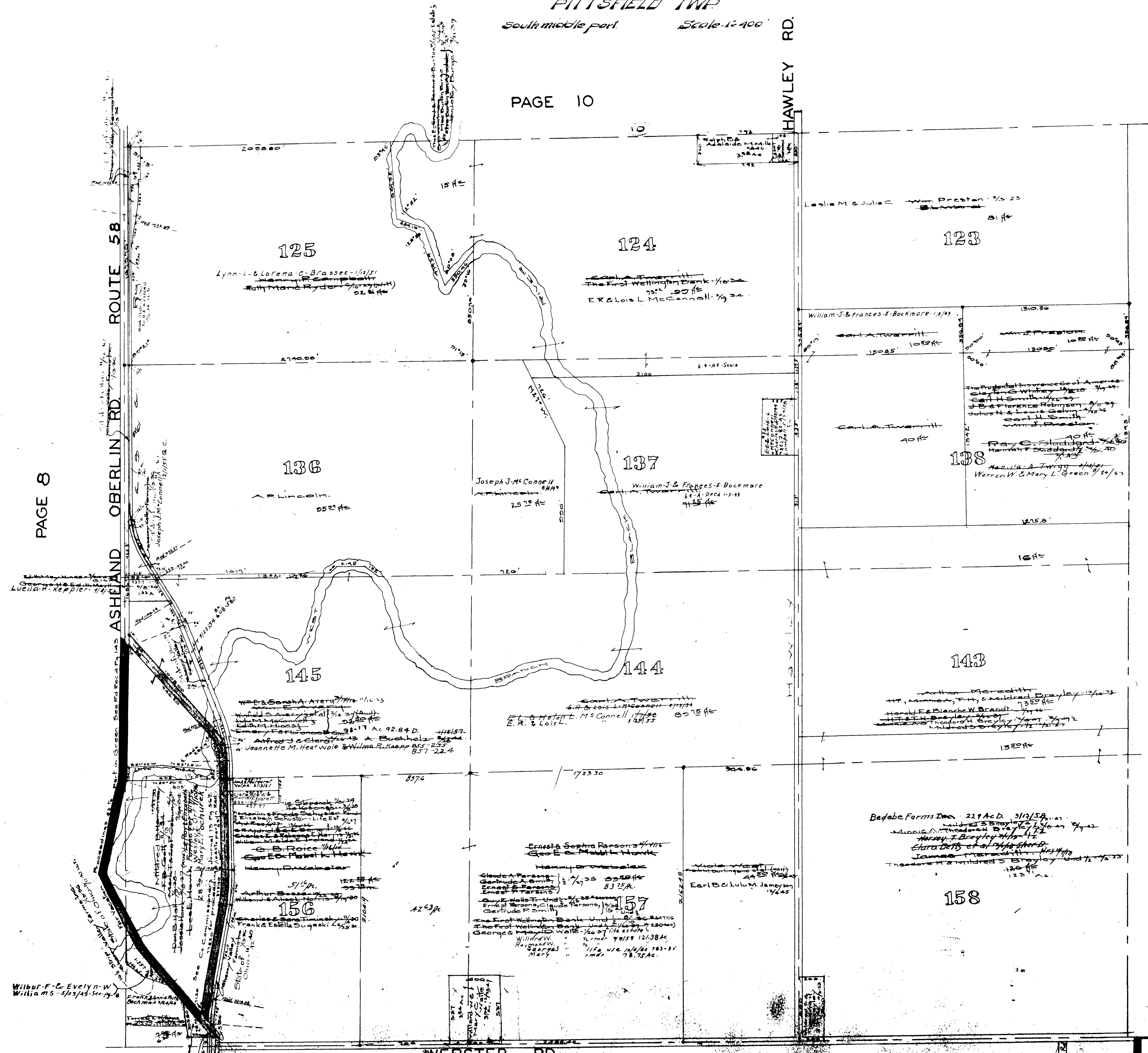
HAWLEY RD.

ROUTE 58

ASHELAND OBERLIN RD.

PAGE 8

PAGE 16



WEBSTER RD. WELLINGTON TWP.

PAGES 3+9

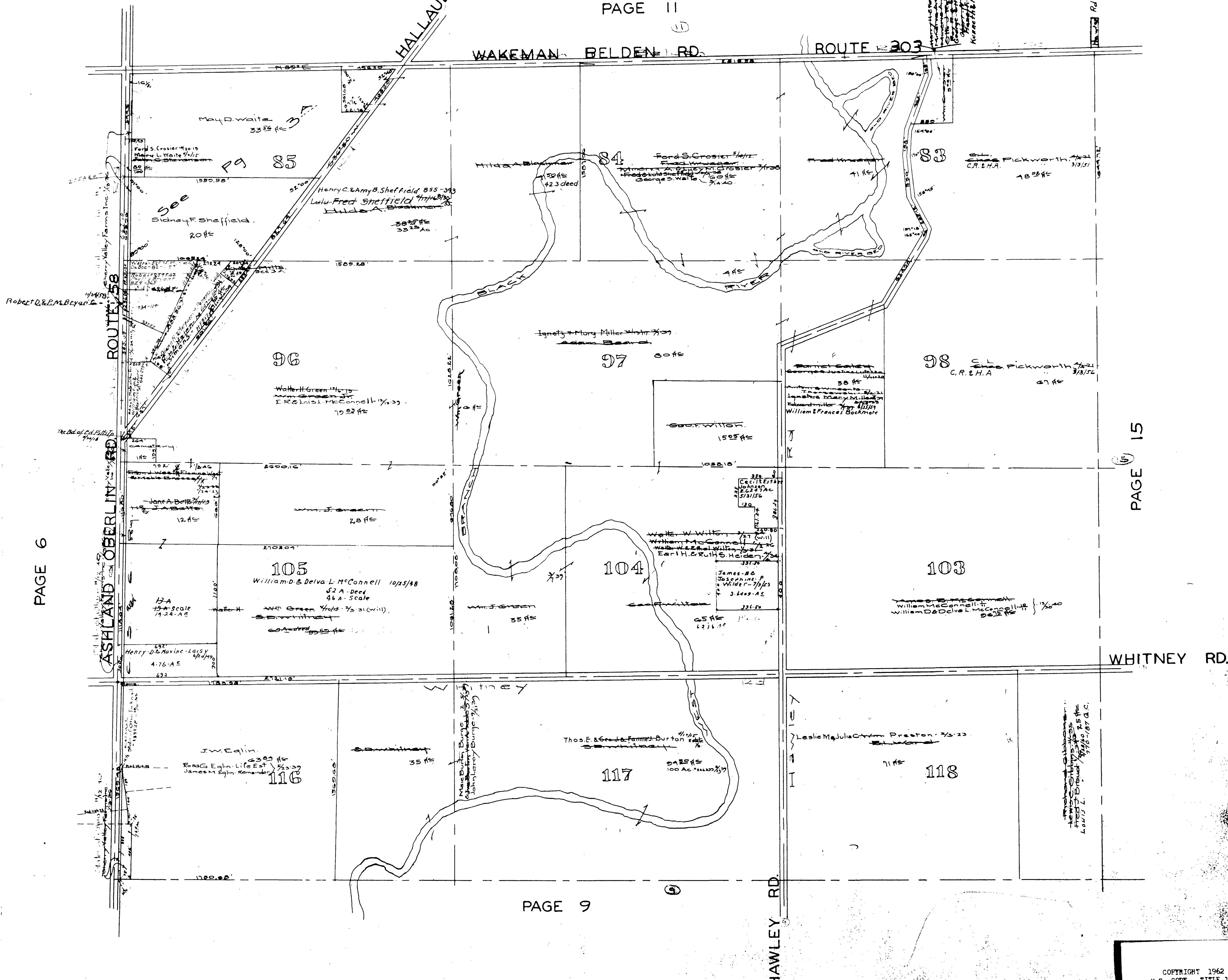
MAP OF PITTSFIELD TOWNSHIP

COPYRIGHT 1962
 U.S. CODE, TITLE 17
 LORAIN COUNTY, OHIO
 Reproduced by,
 Allied Microfilm Corp.
 Akron, Ohio

PITTSFIELD TWP
Middle Part Scale 1"=400'

PAGE 11

WAKEMAN BELDEN RD. ROUTE 303



PAGE 6

PAGE 15

PAGE 9

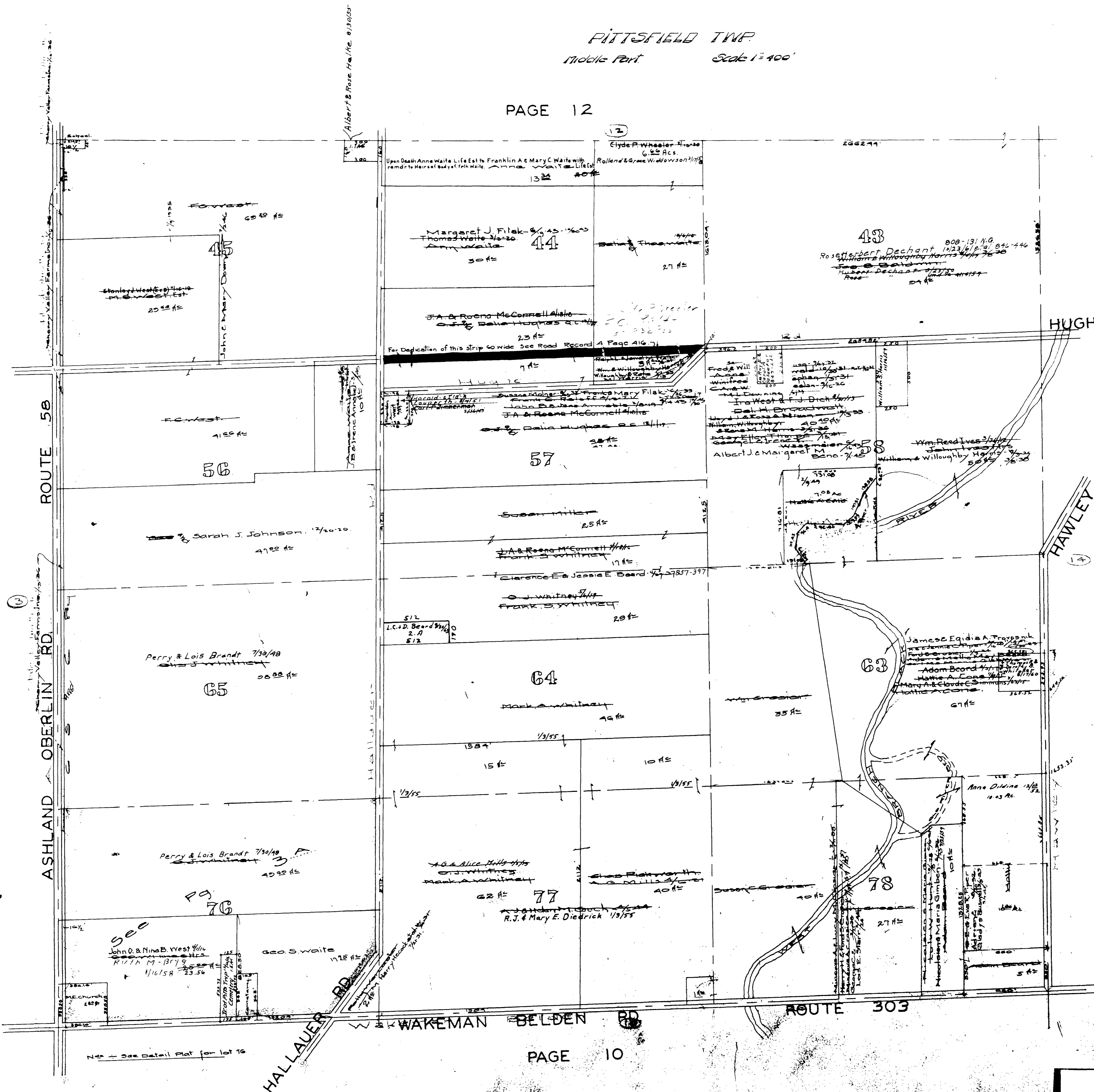
MAP OF
PITTSFIELD TOWNSHIP

COPYRIGHT 1962
U.S. CODE, TITLE 17
LORAIN COUNTY, OHIO
Reproduced by
Allied Microfilm Corp.
Akron, Ohio

PITTSFIELD TWP.
Middle Part Scale 1" = 400'

PAGE 12

PAGE 3



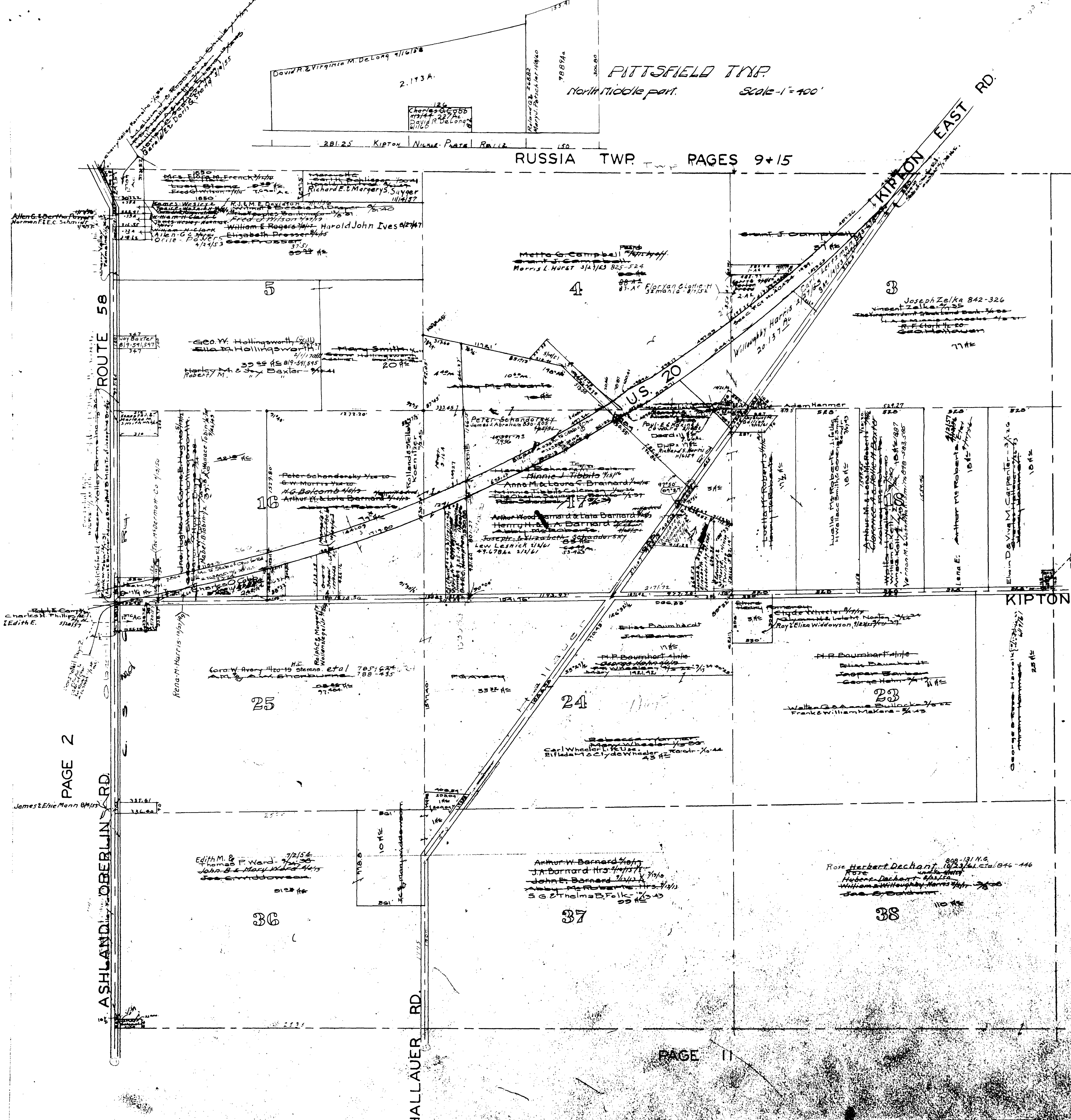
PAGE 10

MAP OF
PITTSFIELD TOWNSHIP

COPYRIGHT 1962
U.S. CODE, TITLE 17
LORAIN COUNTY, OHIO
Reproduced by,
Allied Microfilm Corp.
Akron, Ohio

PITTSFIELD TWP.
North Middle part. Scale - 1" = 100'

RUSSIA TWP. PAGES 9+15



MAP OF
PITTSFIELD TOWNSHIP

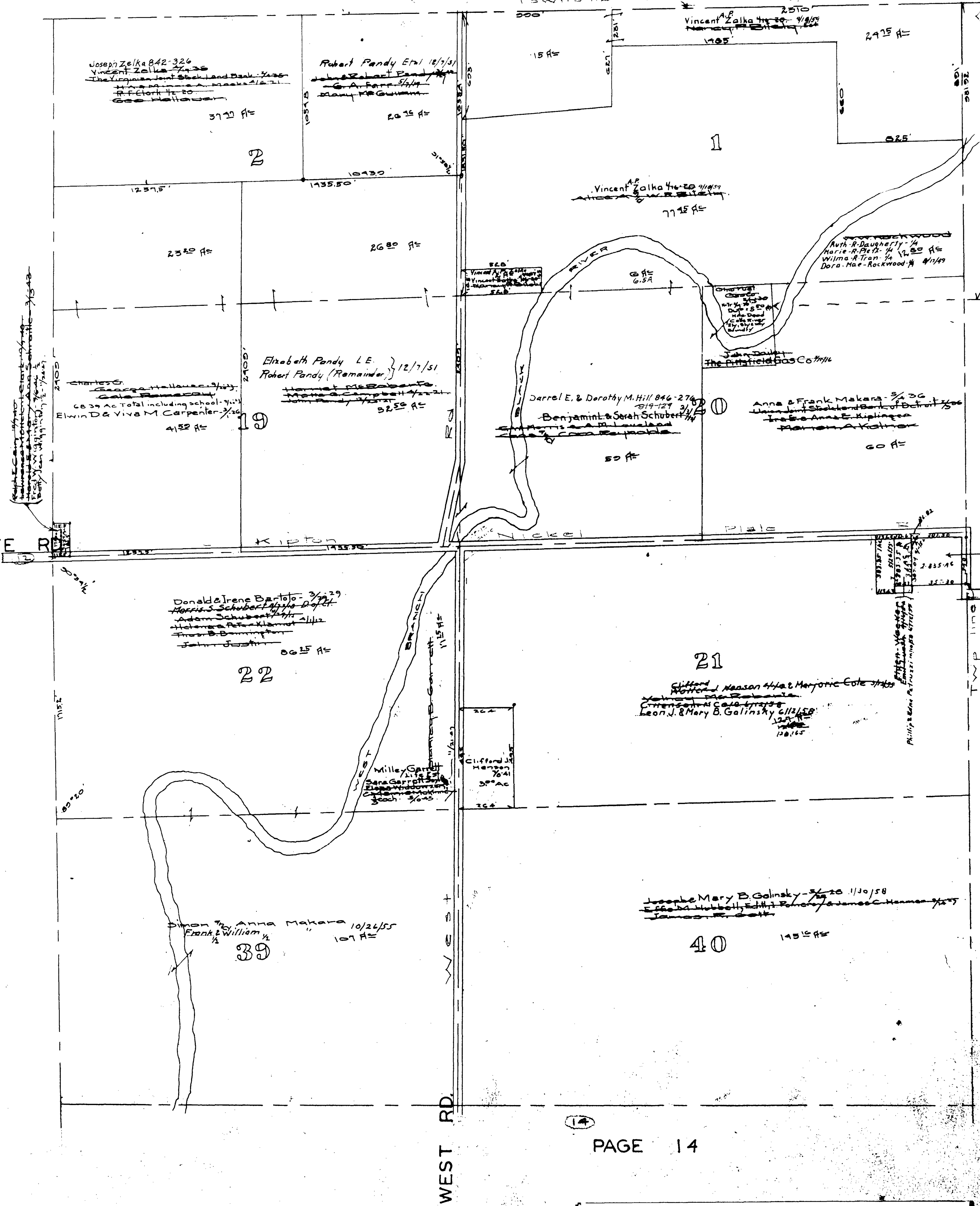
COPYRIGHT 1962
U.S. CODE, TITLE 17
LORAIN COUNTY, OHIO
Reproduced by,
Allied Microfilm Corp.
Akron, Ohio

PITTSFIELD TWP.
North east corner. Scale-1"=400'

R-9
RUSSIA TWP. PAGE 9

KIPTON NICKLE - PLATE RD.

PAGE 12



NOTE -
Description of 500 ft to
L. Bailey is NG.

Walter C. Catherine - W
D. 10/1/51

PAGE 14

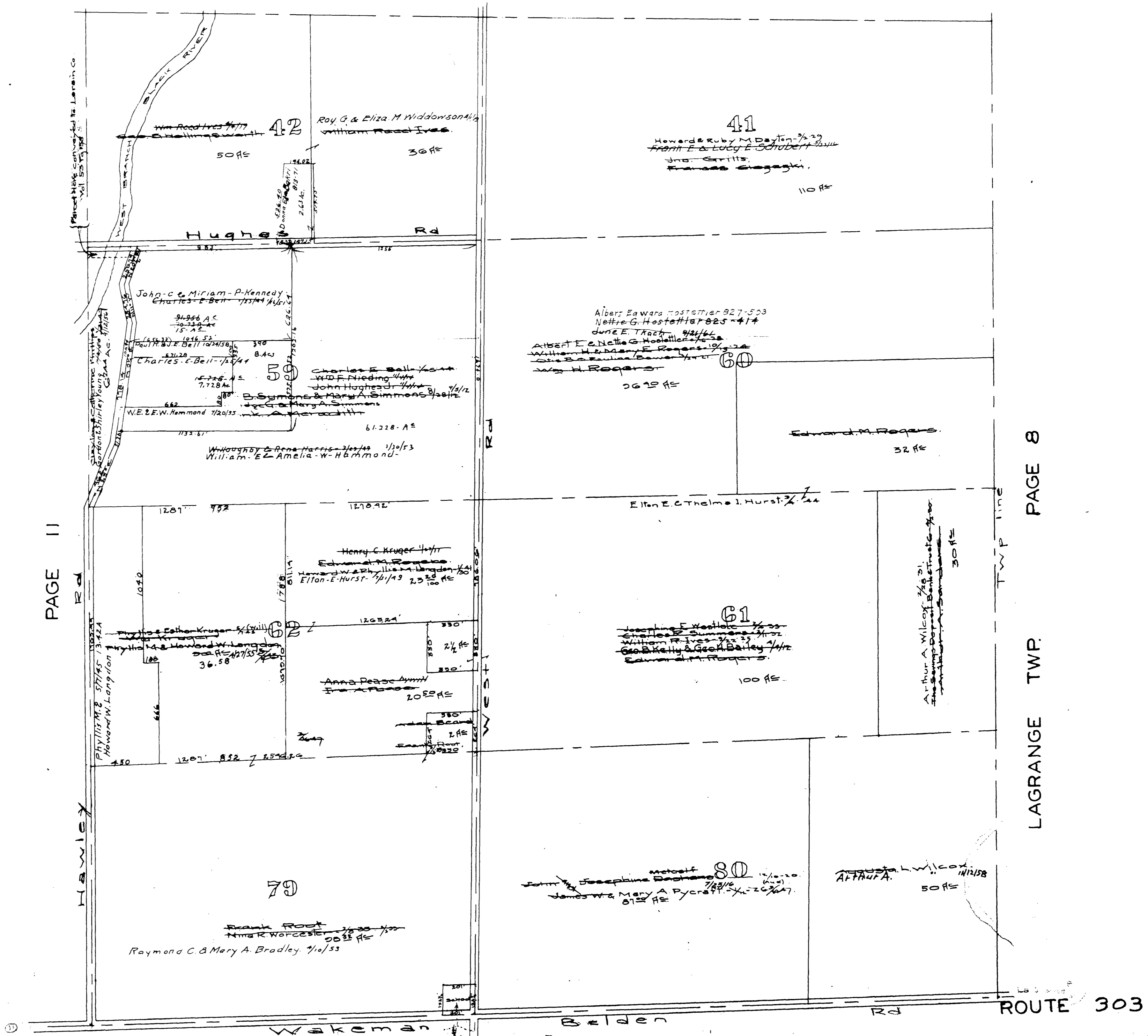
LAGRANGE TWP. PAGE 1

MAP OF
PITTSFIELD TOWNSHIP

COPYRIGHT 1962
U.S. CODE, TITLE 17
LORAIN COUNTY, OHIO
Reproduced by,
Allied Microfilm Corp.
Akron, Ohio

PITTSFIELD TWP
East Middle part Scale-1:400'

PAGE 13



PAGE 11

PAGE 8

LAGRANGE TWP.

PAGE 15

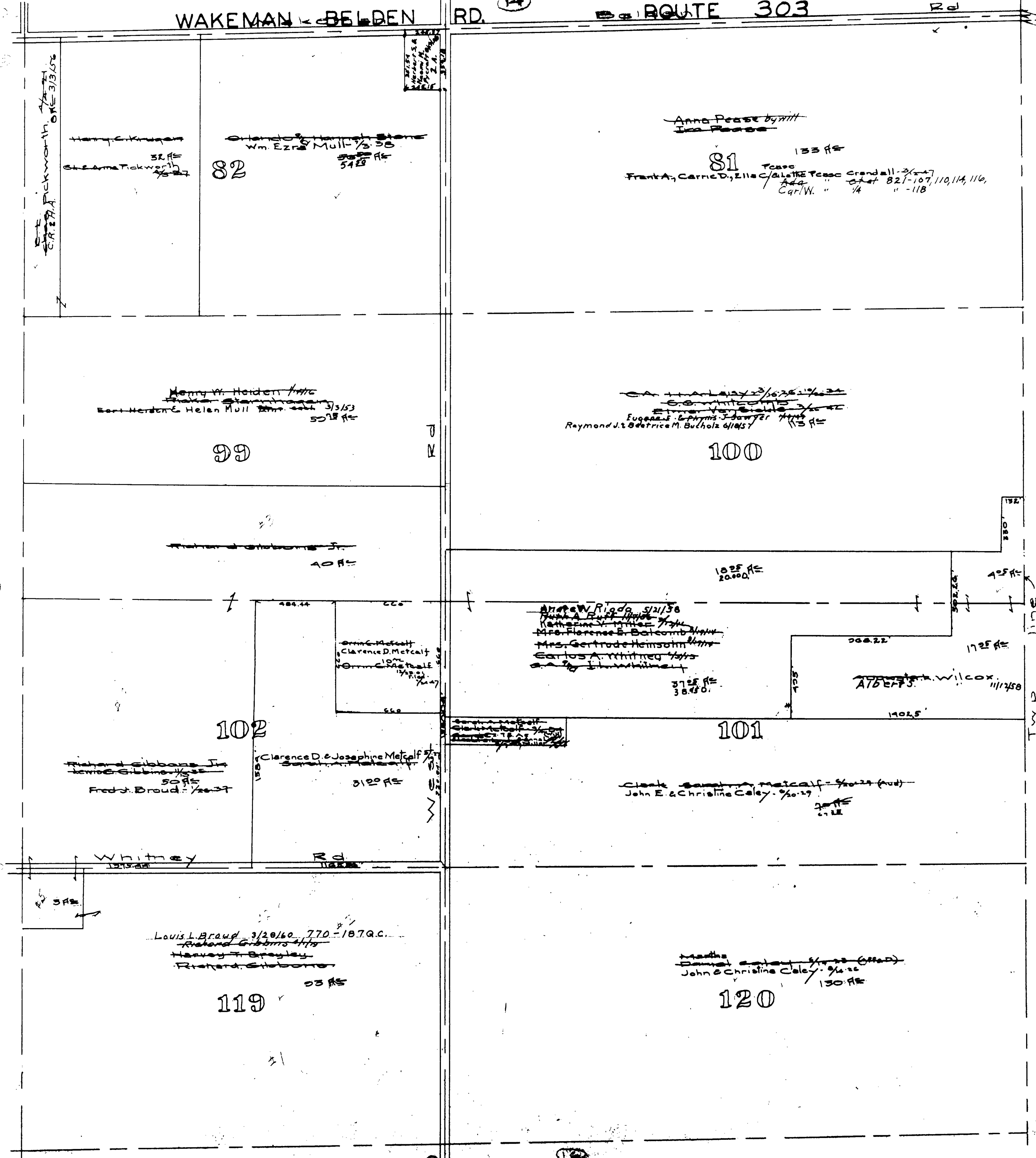
MAP OF
PITTSFIELD TOWNSHIP

COPYRIGHT 1962
U.S. CODE, TITLE 17
LORAIN COUNTY, OHIO
Reproduced by,
Allied Microfilm Corp.
Akron, Ohio

PITTSFIELD TWP

East Middle part Scale-1"=400'

WAKEMAN BELDEN RD. ROUTE 303



WHITNEY RD.

WEST RD.

LAGRANGE TWP.

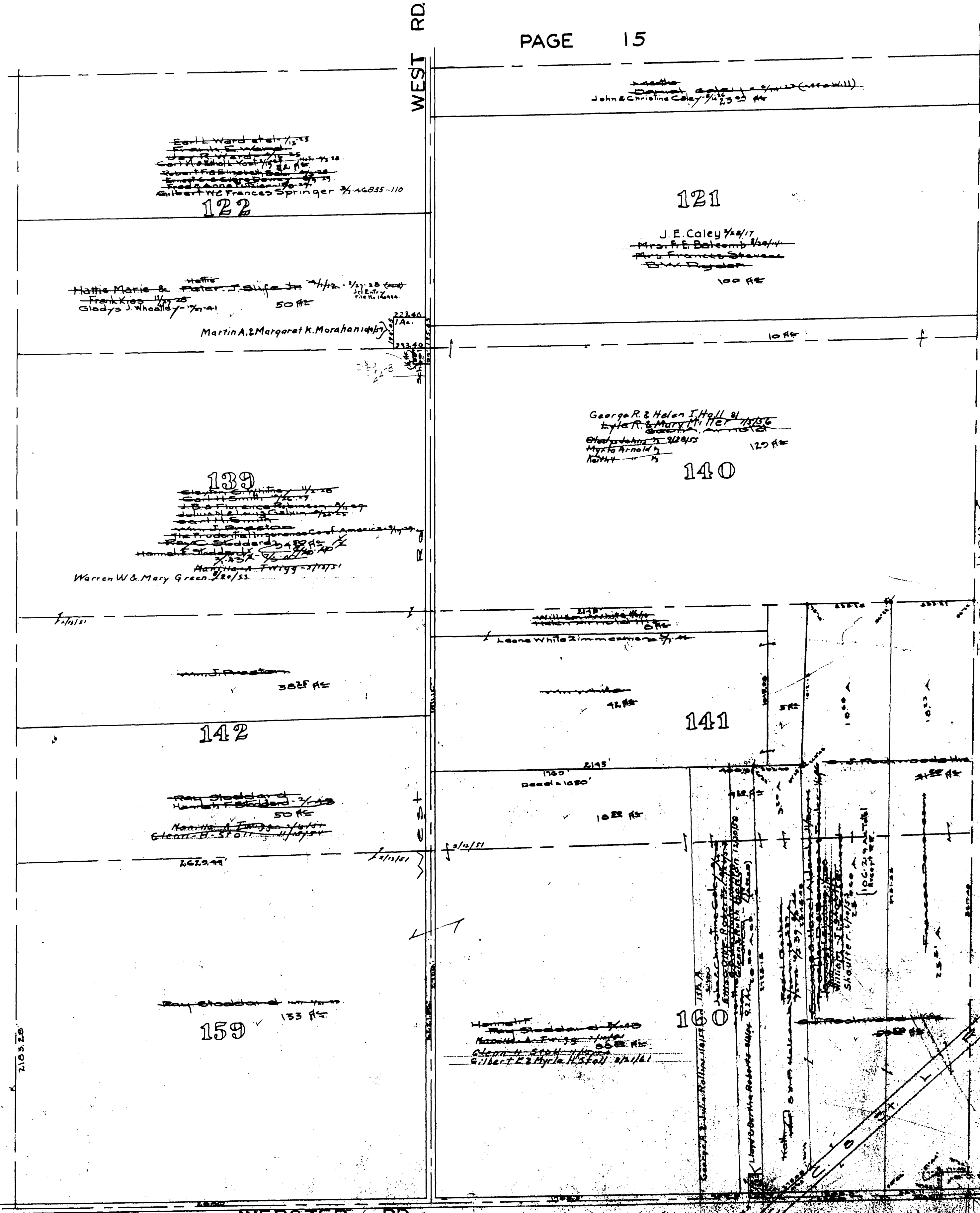
L-9

MAP OF PITTSFIELD TOWNSHIP

COPYRIGHT 1962 U.S. CODE, TITLE 17 LORAIN COUNTY, OHIO Reproduced by Allied Microfilm Corp. Akron, Ohio

PITTSFIELD TWP
South east part Scale - 1" = 400'

PAGE 15



PAGE 9

LAGRANGE TWP PAGE 16

WEBSTER RD.

WELLINGTON TWP PAGE 3

MAP OF
PITTSFIELD TOWNSHIP

COPYRIGHT 1962
U.S. CODE, TITLE 17
LORAIN COUNTY, OHIO
Reproduced by,
Allied Microfilm Corp.
Akron, Ohio