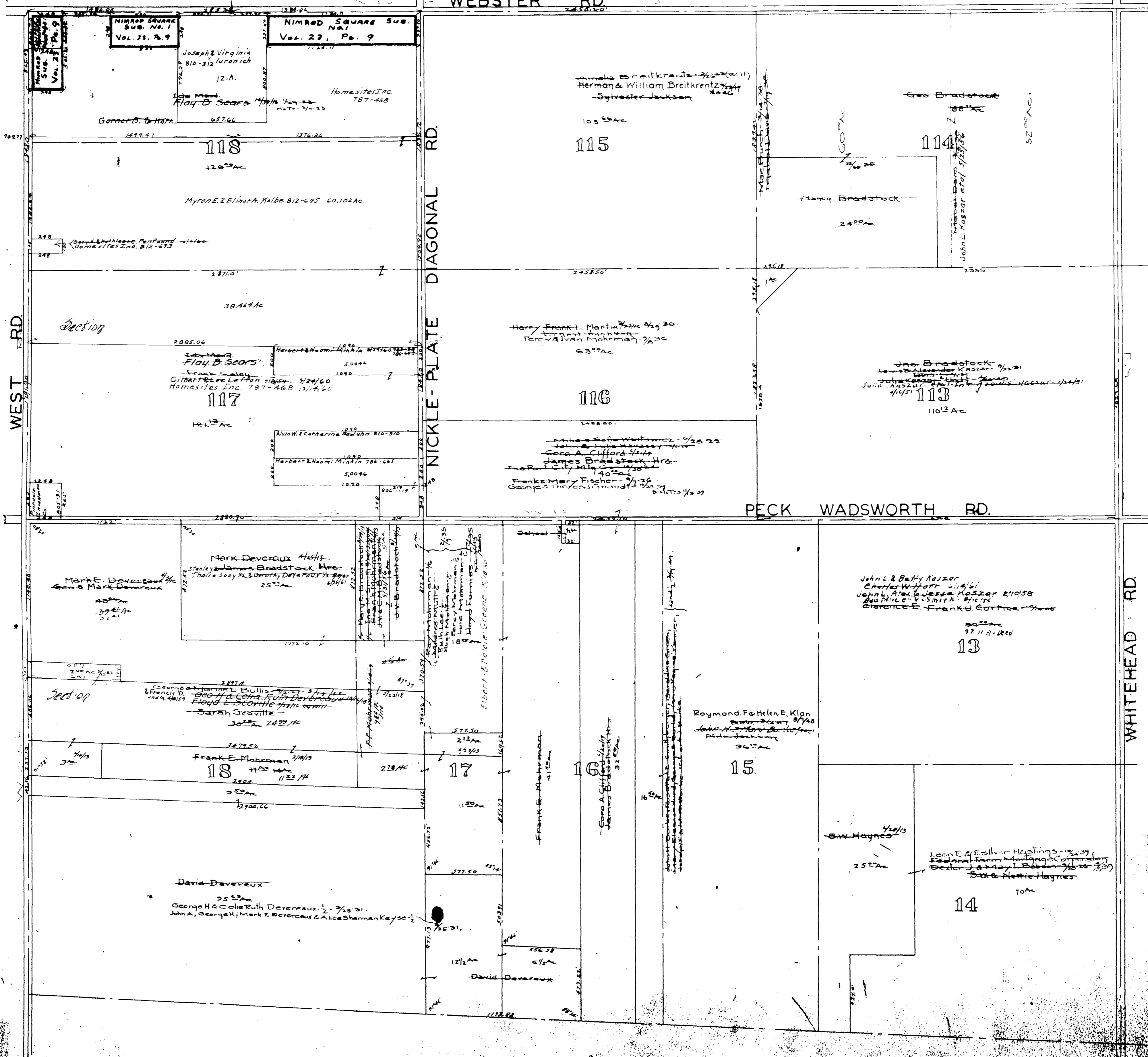


Penfield Twp.
North West Corner
Scale 1" = 400'

LaGrange Tp



Page 3

6

13 2

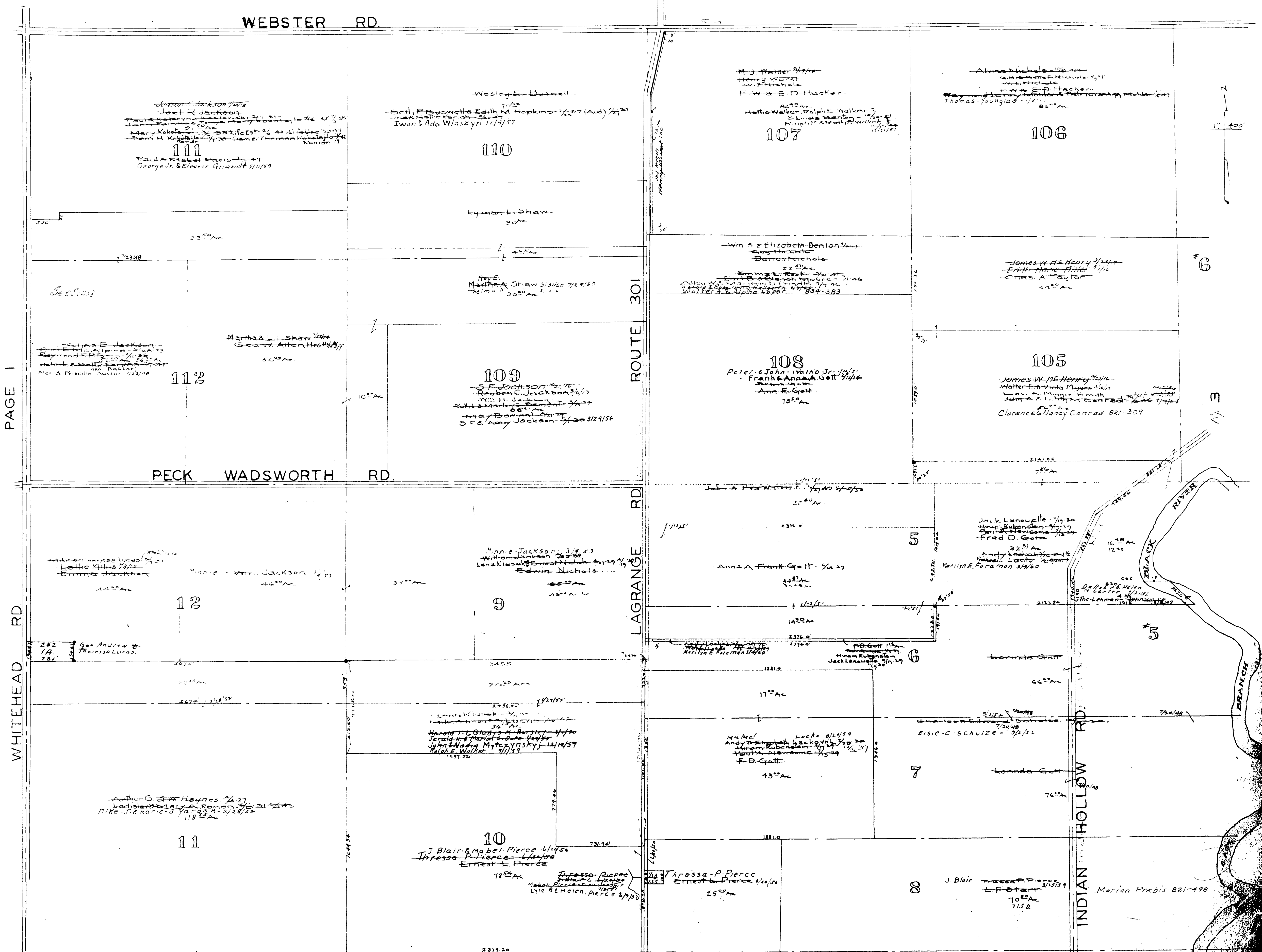
PENFIELD TOWNSHIP

Copyright 1962
U.S. Code, Title 17
Lorain County, Ohio

Reproduced by,
Allied Microfilm Corp.
Akron, Ohio

13
Total

1



PAGE 1
WHITEHEAD RD

L-13-14

Penfield Twp.

Pages 13+14

Note - The deeds for this plate are very ambiguous. They do not conform to the deeds of surrounding townships.

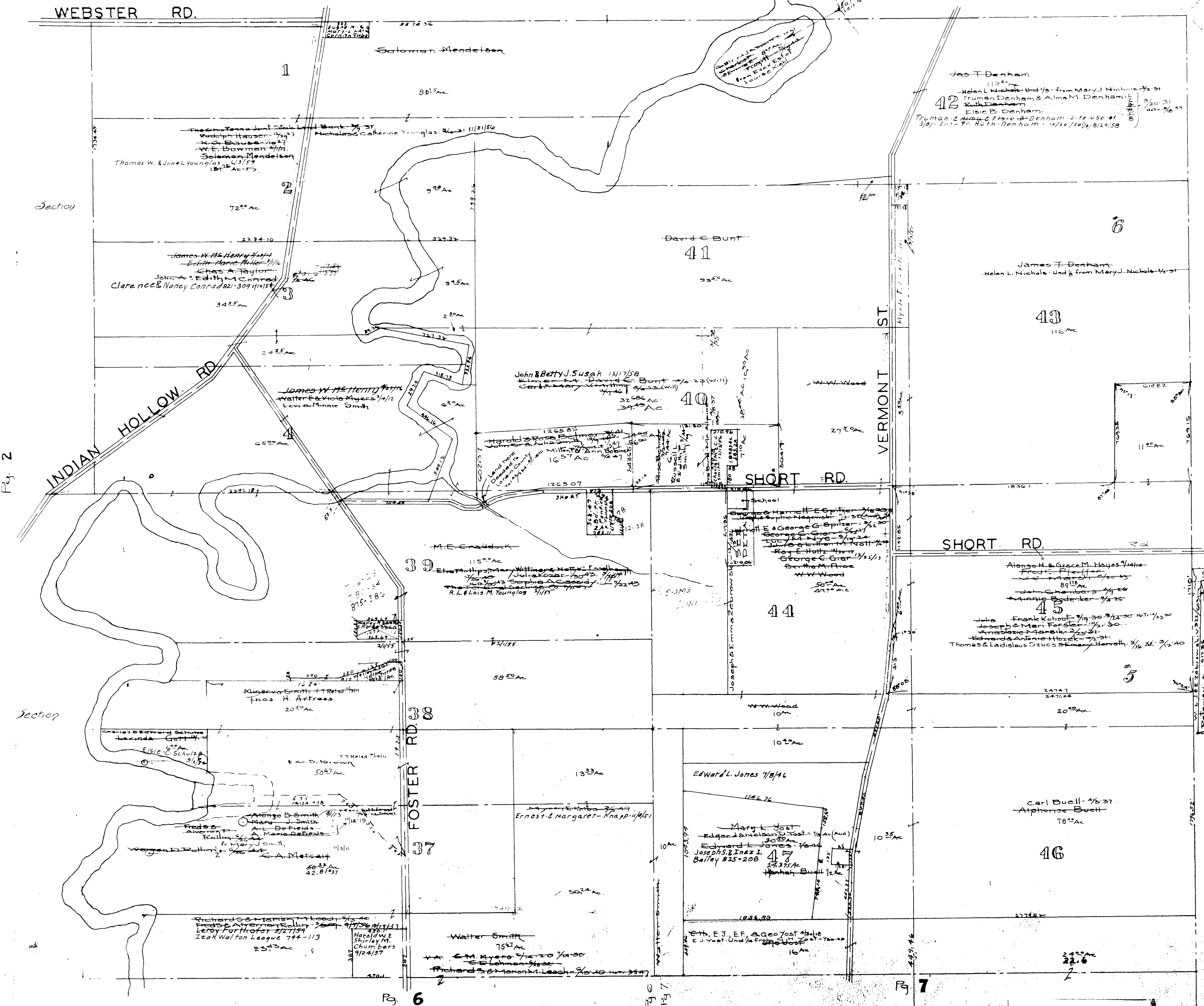


Fig 2

Fig 7

Fig 6

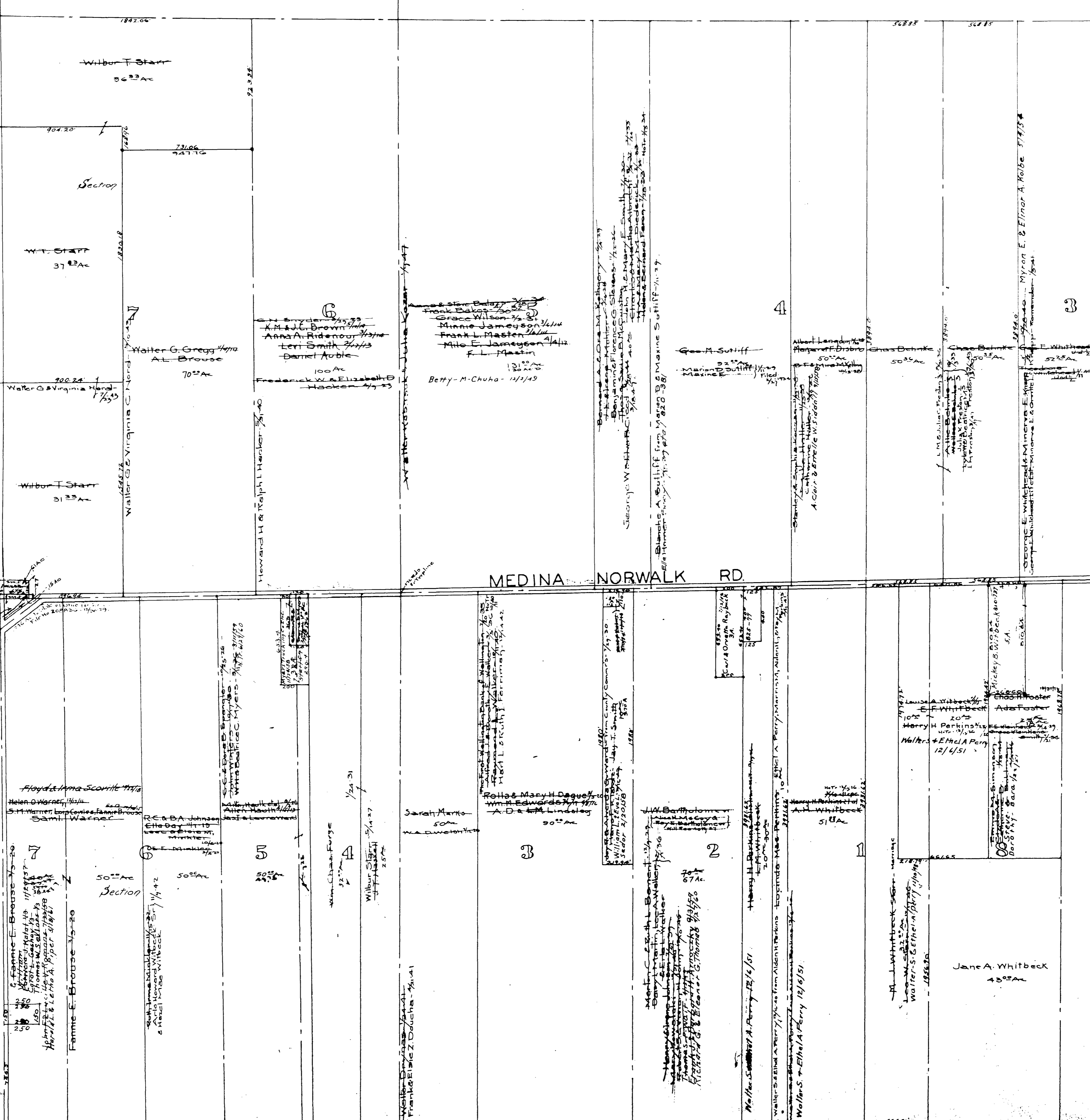
PENFIELD TOWNSHIP

COPYRIGHT 1962 U.S. CODE, TITLE 17 LORAIN COUNTY, OHIO Reproduced by, Allied Microfilm Corp. Akron, Ohio

MEDINA CO. TWP. HITCHFIELD

WEST RD.

EMU - 52460 - 46 - 3/26/80 9/20/81
Charles A. Warner - 5/18/76
George A. Warner - 5/18/76
Charles A. Warner - 5/18/76
George A. Warner - 5/18/76
Charles A. Warner - 5/18/76
George A. Warner - 5/18/76
Charles A. Warner - 5/18/76
George A. Warner - 5/18/76

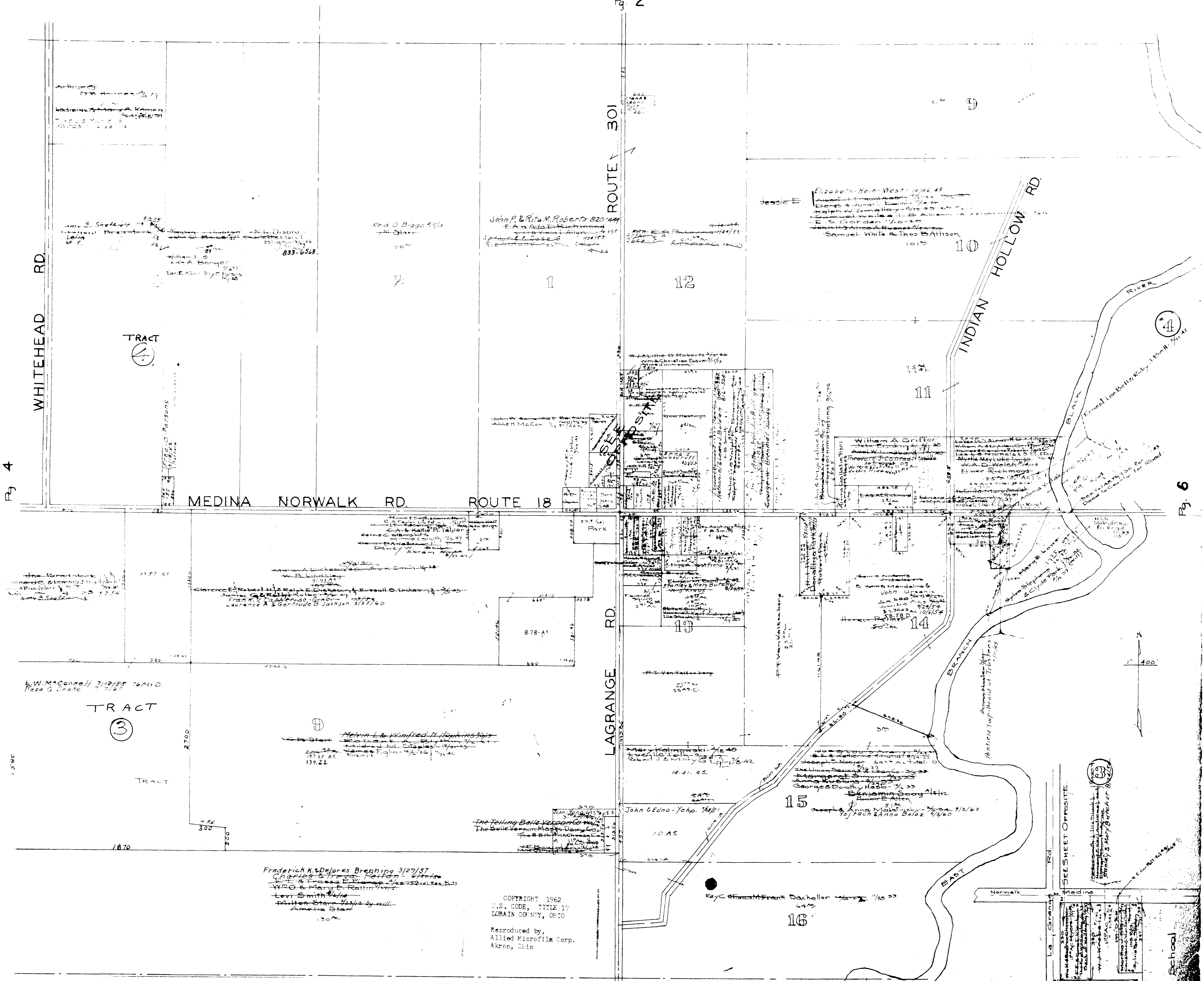


MEDINA NORWALK RD

WHITEHEAD RD.

ROUTE 18

B 2

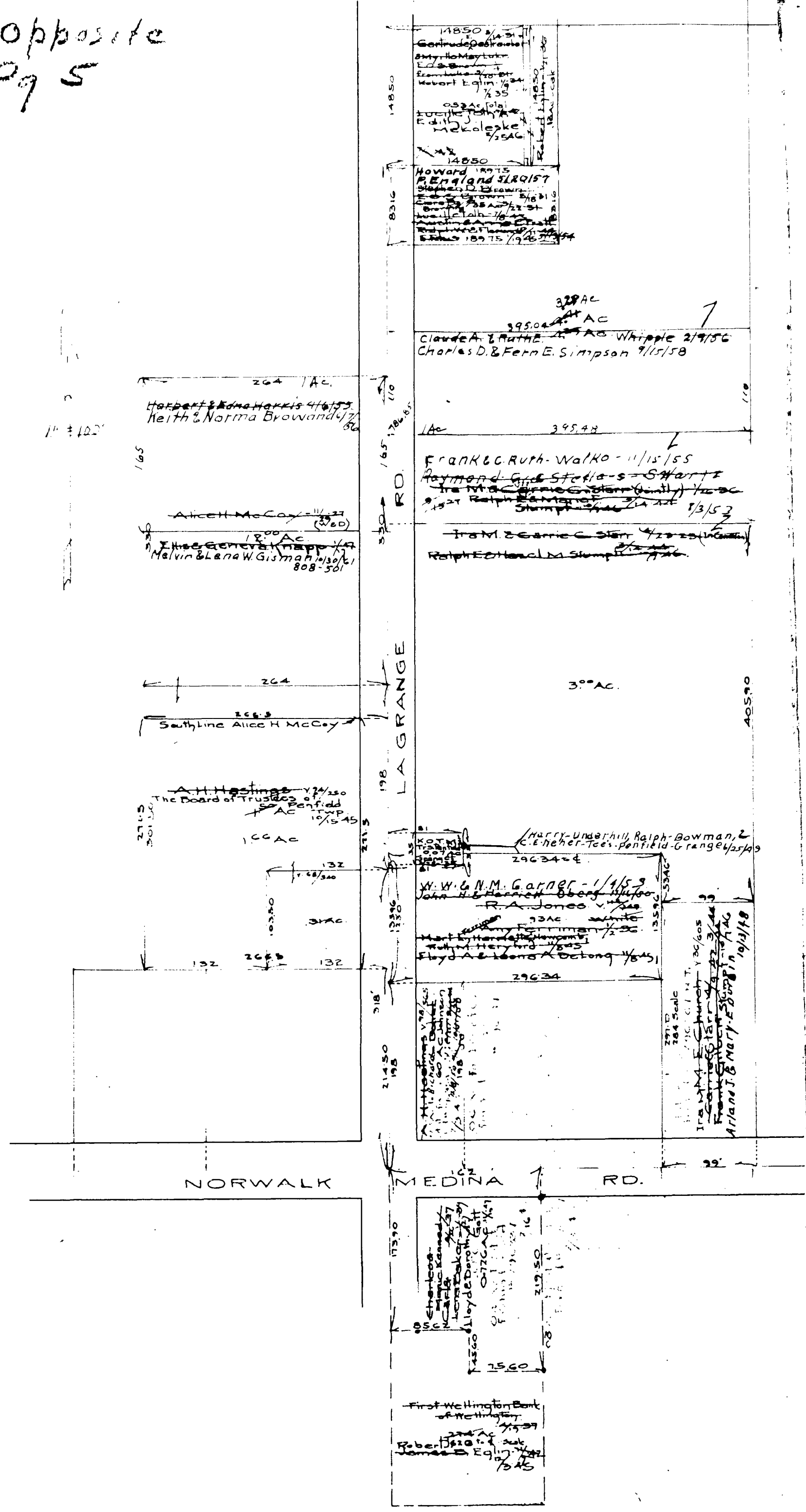


COPYRIGHT 1962
 U.S. CODE, TITLE 17
 LORAIN COUNTY, OHIO
 Reproduced by,
 Allied Microfilm Corp.
 Akron, Ohio

SEE SHEET OPPOSITE

Opposite
Pg 5

OPP-5



PENFIELD TOWNSHIP

COPYRIGHT 1962
 U.S. CODE, TITLE 17
 LORAIN COUNTY, OHIO
 Reproduced by
 Allied Microfilm Corp.
 Akron, Ohio

Opposite
Pg 5-1

OPP 5-1

George A. & E. L. M. Nutt
4/27/55
69 Ac

Innison Hollow

Arthur M. E.
Socoy 4/20/55
200 46 Ac

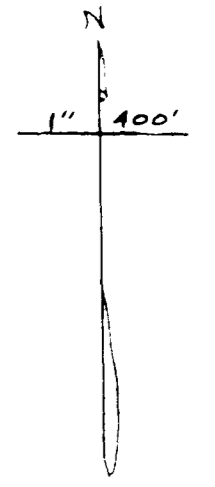
Meding 368
Norwalk 100

PENFIELD TOWNSHIP

COPYRIGHT 1962
U.S. CODE, TITLE 17
LORAIN COUNTY, OHIO
Reproduced by,
Allied Microfilm Corp.
Akron, Ohio

(3)

Penfield Twp.
East Middle Part
Scale 1" = 100'



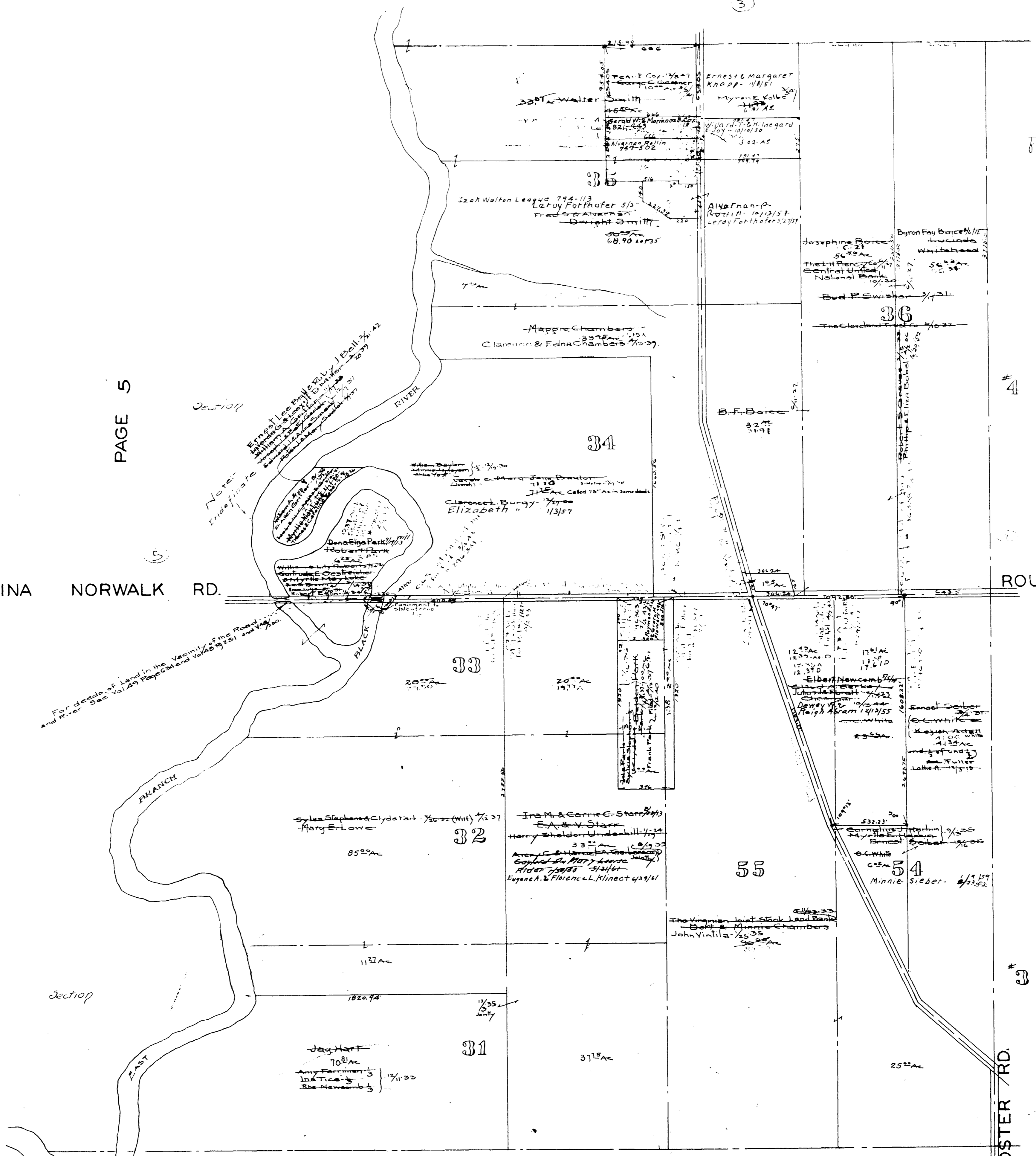
PAGE 5

MEDINA NORWALK RD.

ROUTE 18

PAGE 7

FOSTER RD.

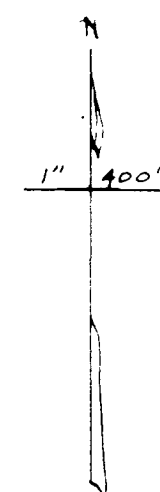


PAGE 9

PENFIELD TOWNSHIP

COPYRIGHT 1962
U.S. CODE, TITLE 17
LORAIN COUNTY, OHIO
Reproduced by,
Allied Microfilm Corp.
Akron, Ohio

PENFIELD Twp.
East Middle
Scale 1" = 400'



Tract

PAGE 6

MEDINA NORWALK RD.

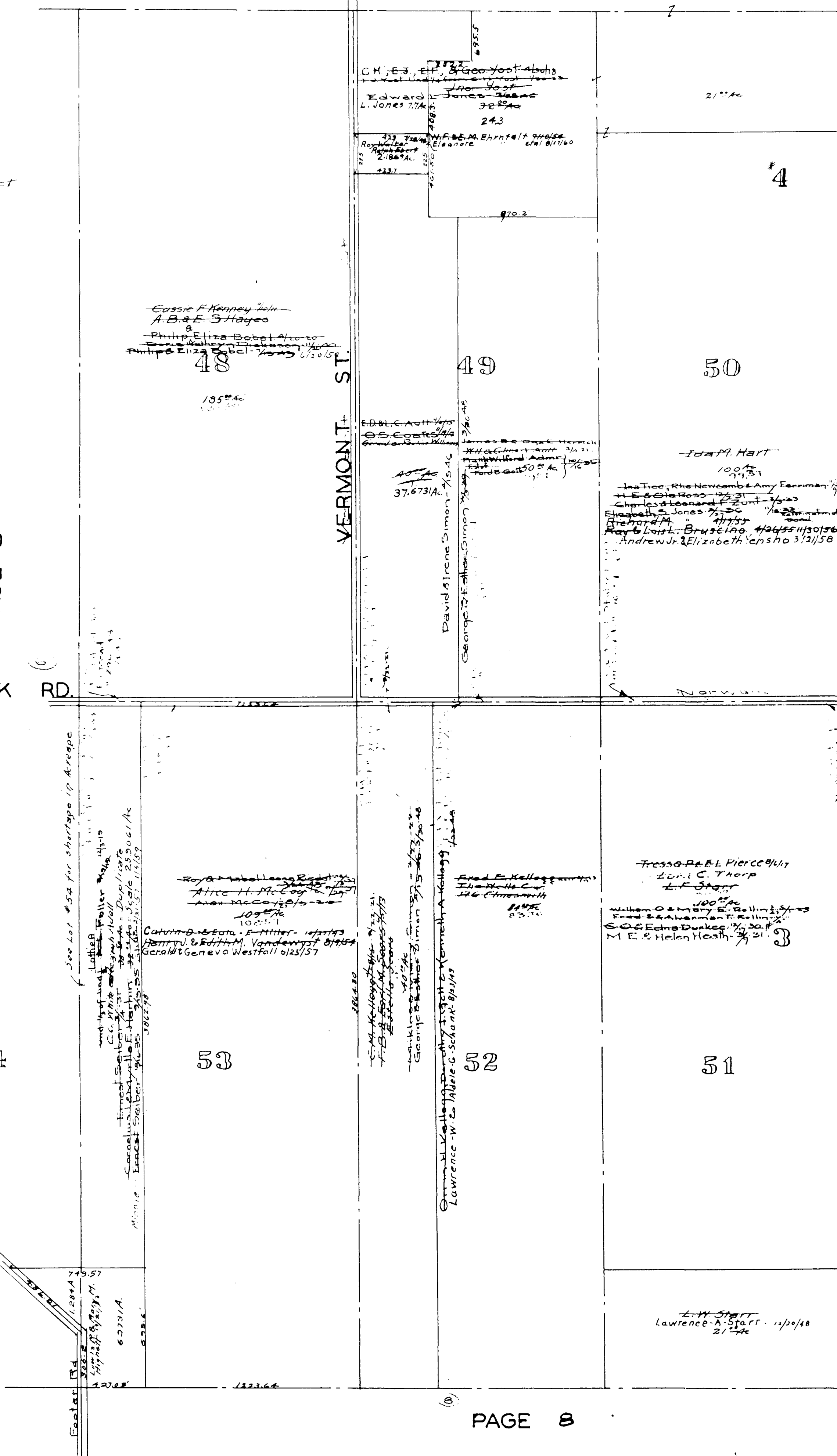
Tract

54

VERMONT ST.

ROUTE 18

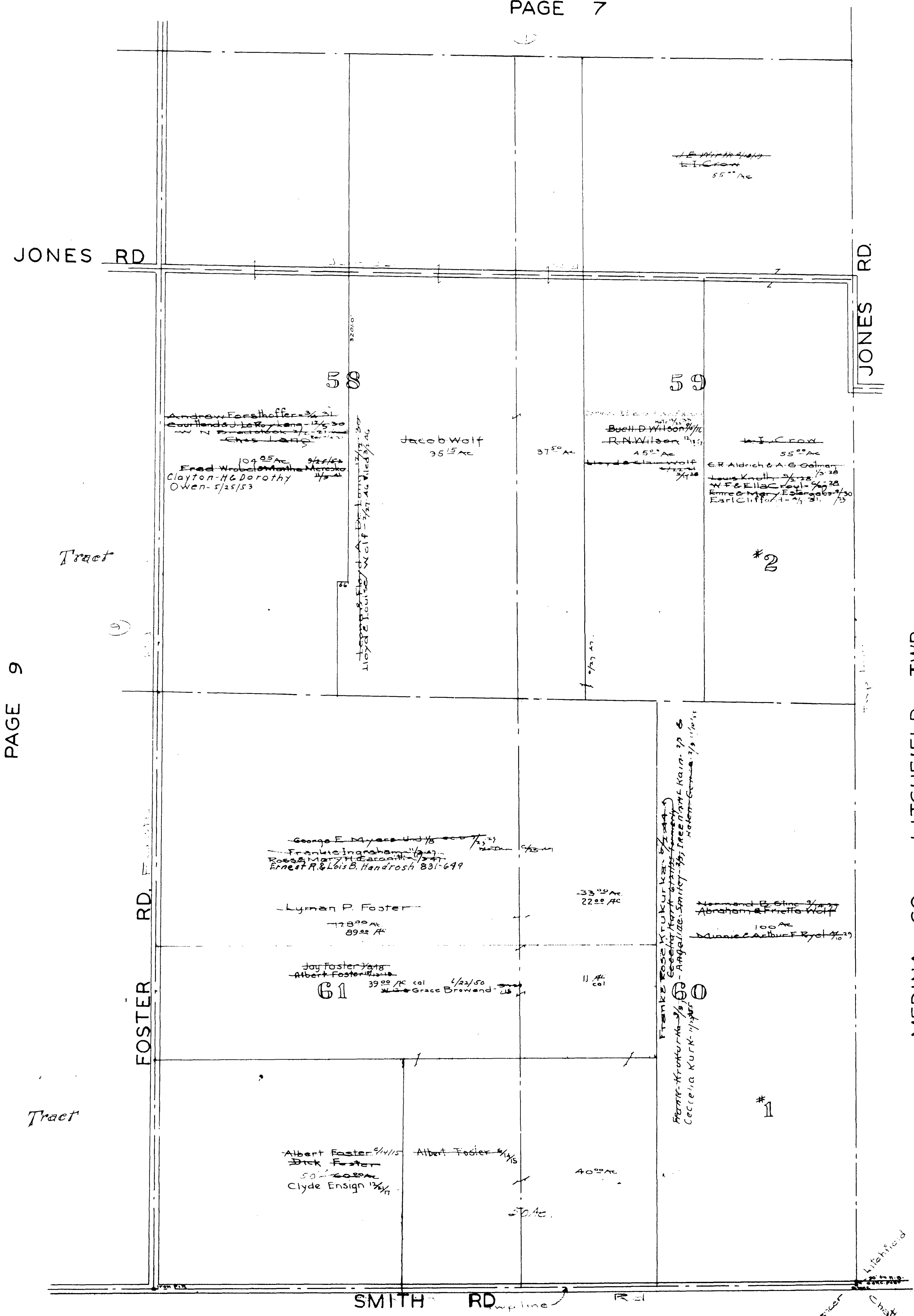
MEDINA CO. LITCHFIELD TWP.



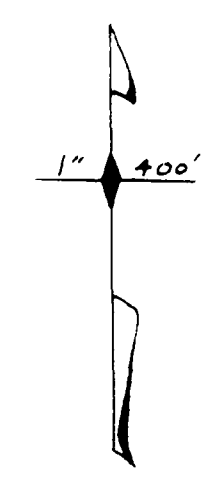
PENFIELD TOWNSHIP

COPYRIGHT 1962
U.S. CODE, TITLE 17
LORAIN COUNTY, OHIO

Reproduced by,
Allied Microfilm Corp.
Akron, Ohio



Penfield Twp.
 South East Corner.
 Scale 1" = 400'



PAGE 9

MEDINA CO. - LITCHFIELD TWP.

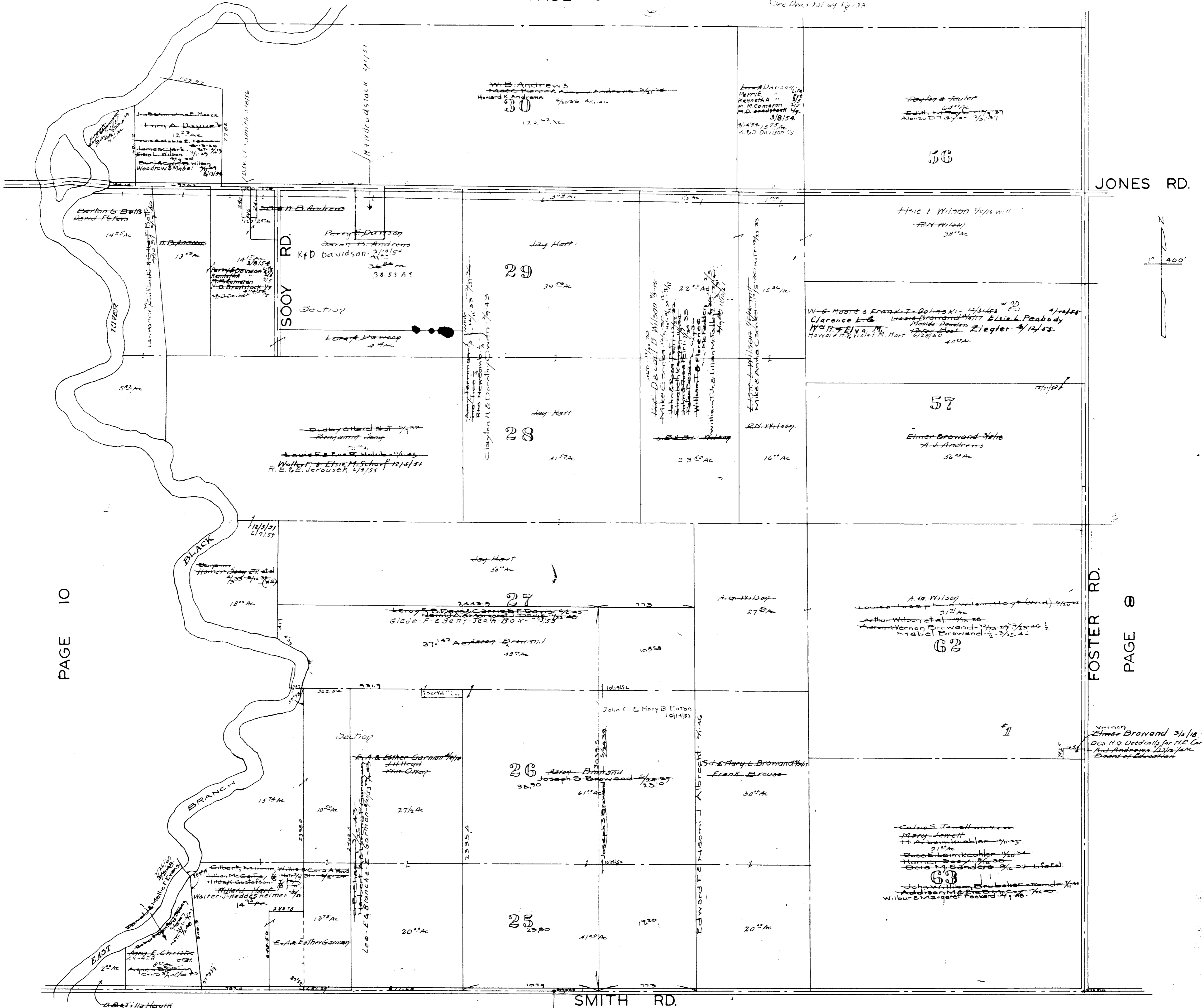
PENFIELD TOWNSHIP

MEDINA CO. - SPENCER TWP.

COPYRIGHT 1962
 U.S. CODE, TITLE 17
 LORAIN COUNTY, OHIO
 Reproduced by,
 Allied Microfilm Corp.
 Akron, Ohio

Note: Auditor: Dep. Shans C. Ba. P. O. Wilson
listes per 23/54 in list 28. See Deed Vol
100. P. 233 should be in list in common
in 47. in list 28 29 30 as shown
on Map of Wilson's. A. G. Wilson's
See Deed Vol 64 P. 133.

East Middle Part
Scale 1" = 400'



PAGE 10

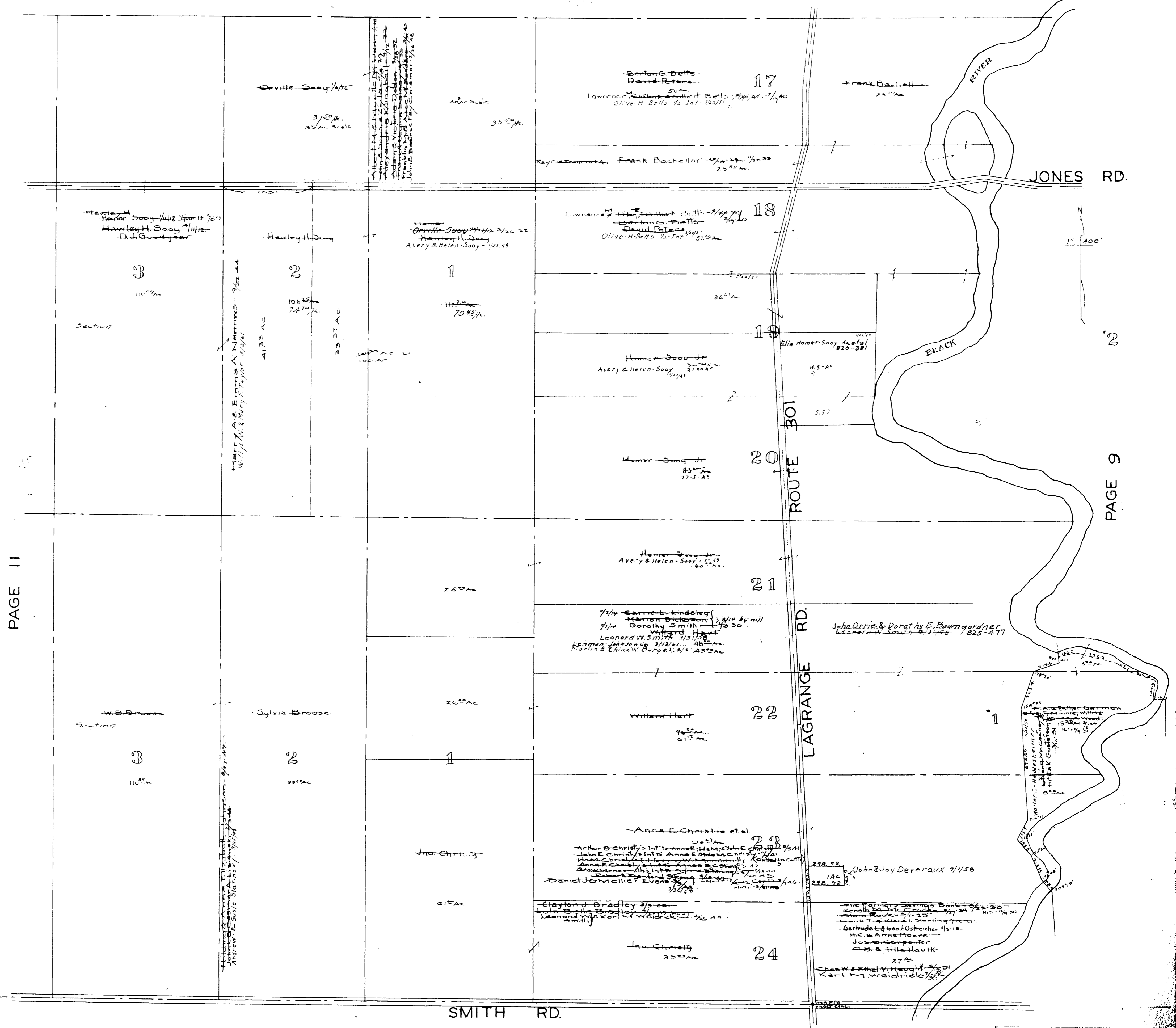
FOSTER RD. PAGE 8

MEDINA CO. - SPENCER TWP.

PENFIELD TOWNSHIP

G. B. H. Hawk
Jas. O. Carpenter
H. G. Anna Moore
Frank T. Gabel Working 1/20
Wm. H. Gabel Working 1/20
Wm. H. Gabel Working 1/20
The Farmers Savings Bank 1/20
Charles E. Haly Vantage 2/13/34
Karl H. Weidnick 1900 AC

COPYRIGHT 1962
U.S. CODE, TITLE 17
LORAIN COUNTY, OHIO
Reproduced by,
Allied Microfilm Corp.
Akron, Ohio



PAGE 11

PAGE 9

MEDINA CO. - SPENCER TWP.

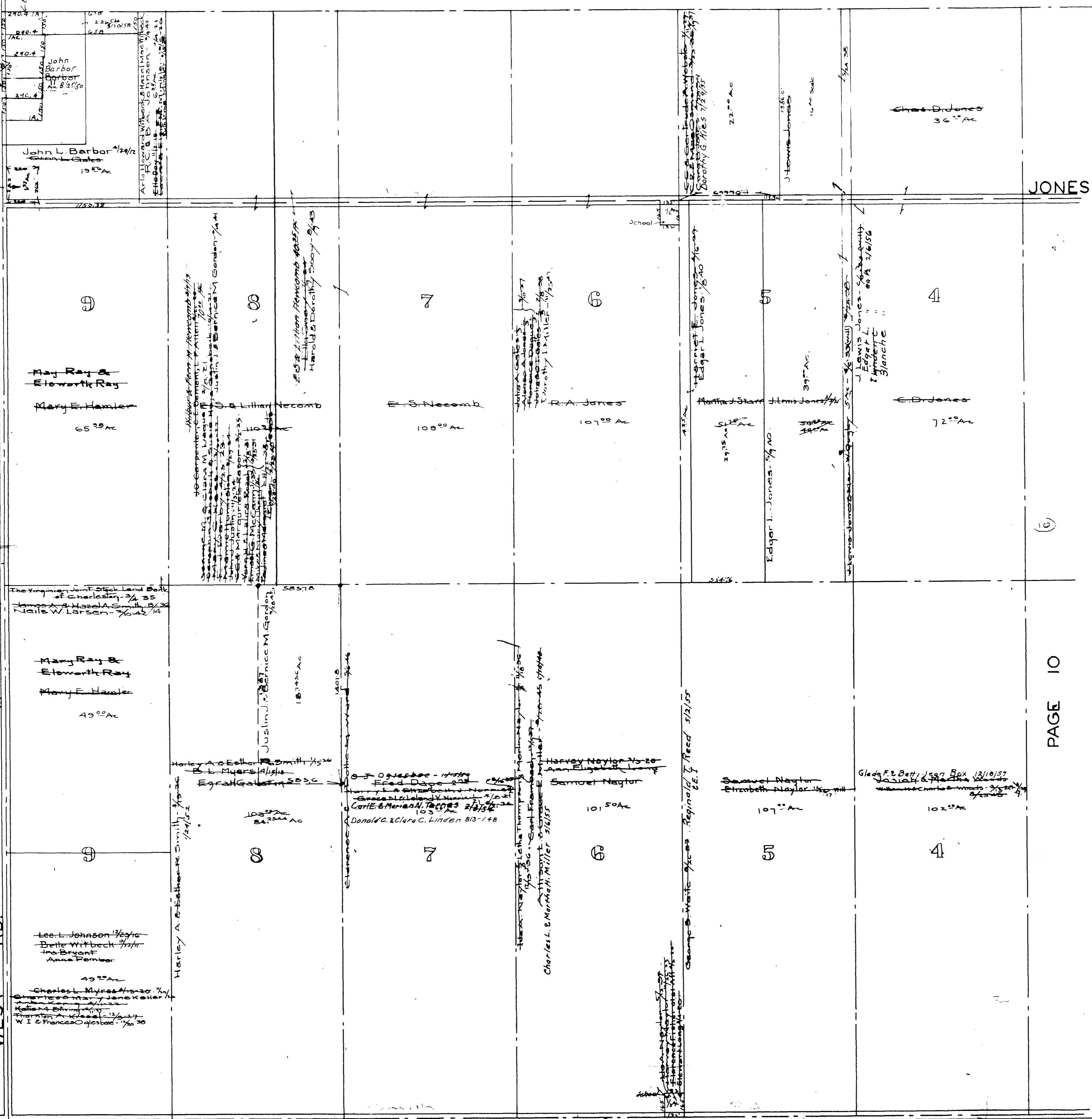
PENFIELD TOWNSHIP

COPYRIGHT 1962
U.S. CODE, TITLE 17
LORAIN COUNTY, OHIO

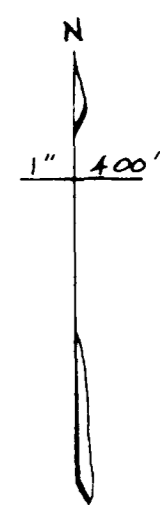
Reproduced by,
Allied Microfilm Corp.
Akron, Ohio

WELLINGTON TWP. PAGE 1

WEST RD.



PENFIELD TWP. South West Corner Scale 1" = 100'



JONES RD.

SMITH RD.

MEDINA CO. - SPENCER TWP.

PENFIELD TOWNSHIP

COPYRIGHT 1962
 U.S. CODE, TITLE 17
 LORAIN COUNTY, OHIO
 Reproduced by,
 Allied Microfilm Corp.
 Akron, Ohio