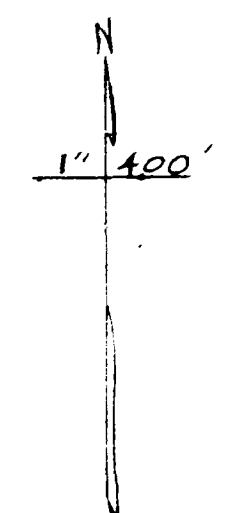


LaGrange Twp.
North West Corner
Scale 1" = 400'

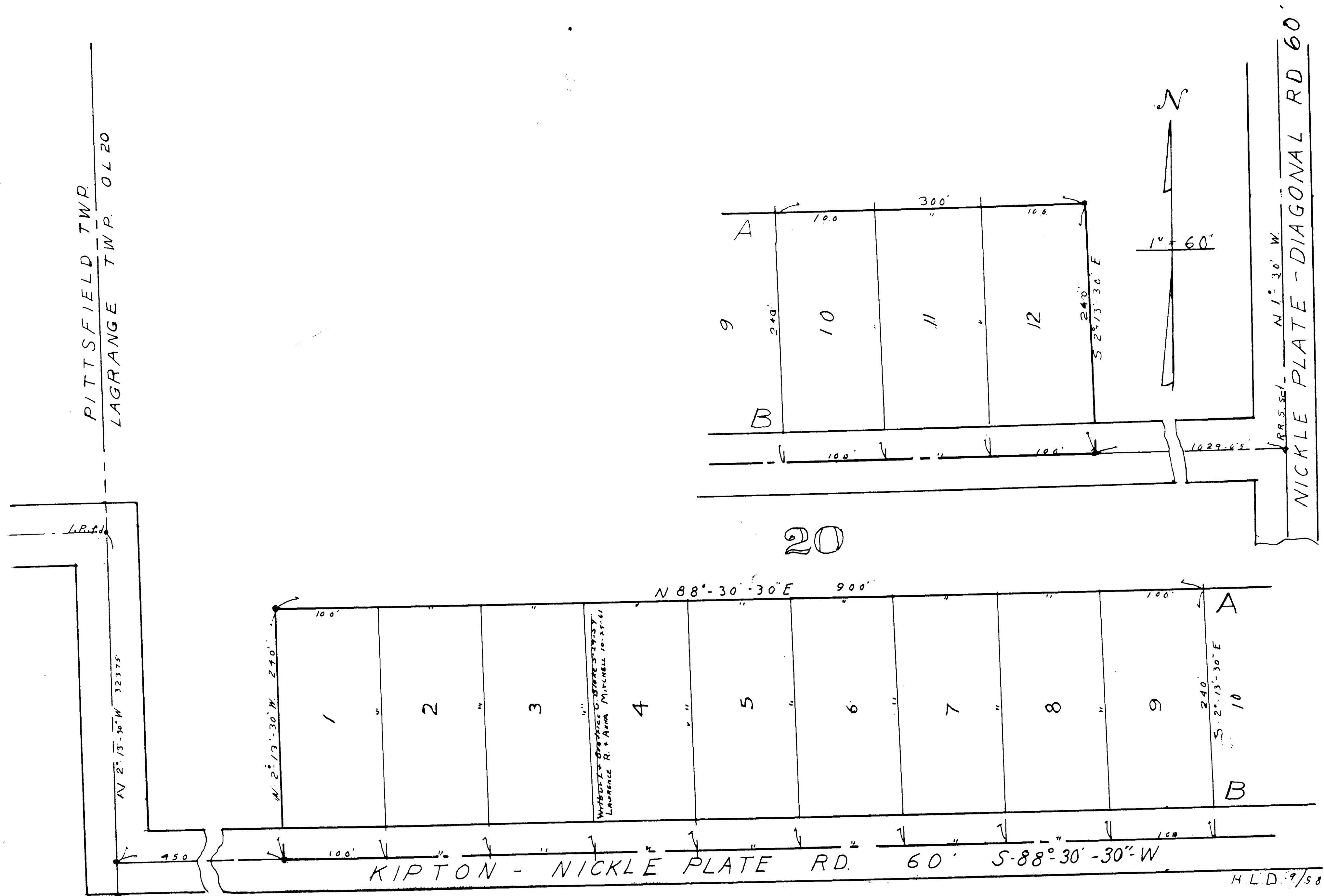


PAGE 2

COPYRIGHT 1962
U.S. CODE, TITLE 17
LORAIN COUNTY, OHIO
Reproduced by,
Allied Microfilm Corp.
Akron, Ohio

PAGE 13
PITTSFIELD TWP

25
Total

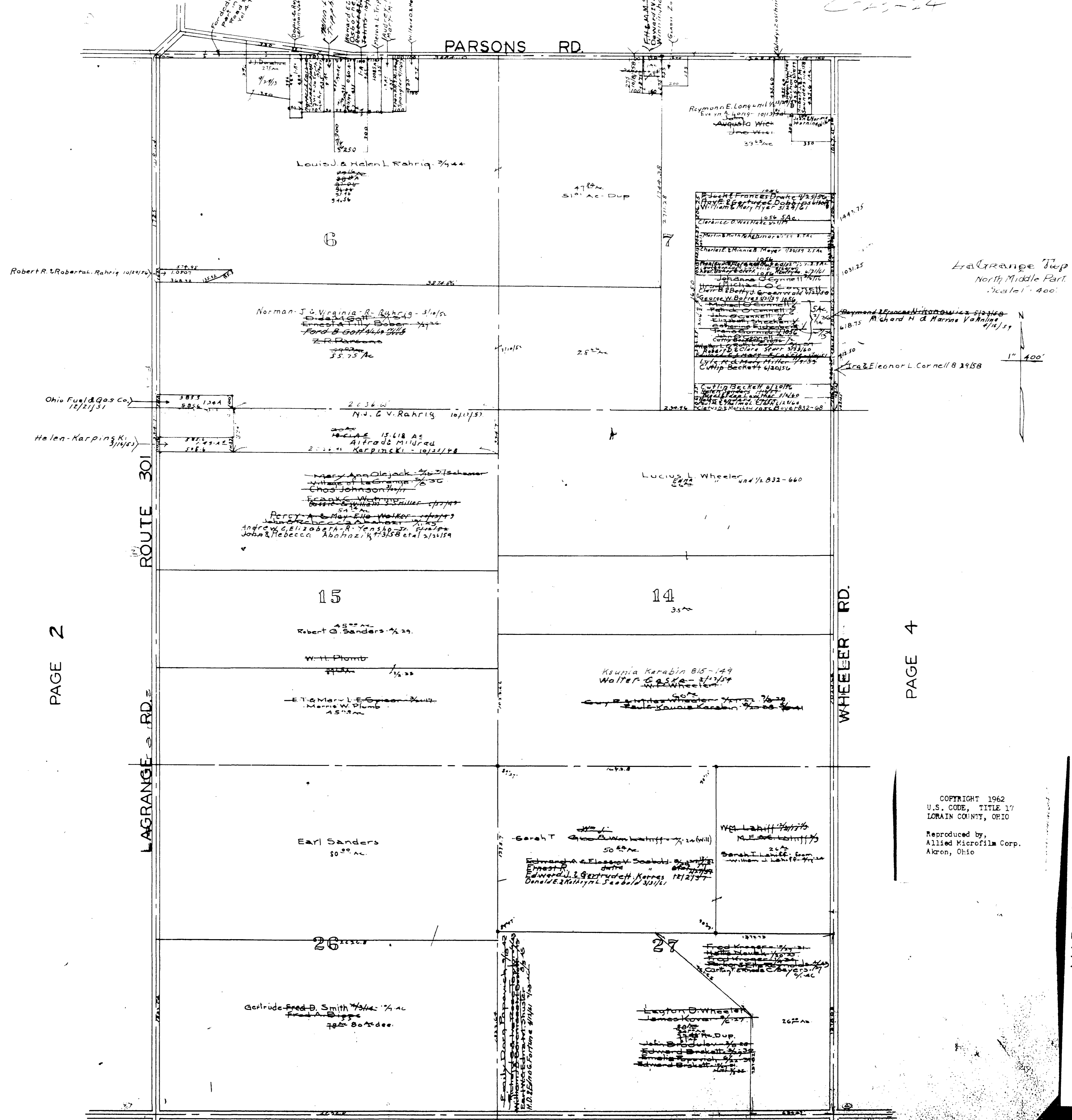


SUNRISE ALLOTMENT No 1
 OL 20 LAGRANGE TWP.
 Lots in Blank: Dorothy A Smith
 VOL 20 - Pg 36

MAP OF
 LAGRANGE TOWNSHIP

COPYRIGHT 1962
 U.S. CODE, TITLE 17
 LORAIN COUNTY, OHIO
 Reproduced by,
 Allied Microfilm Corp.
 Akron, Ohio

C-23-24



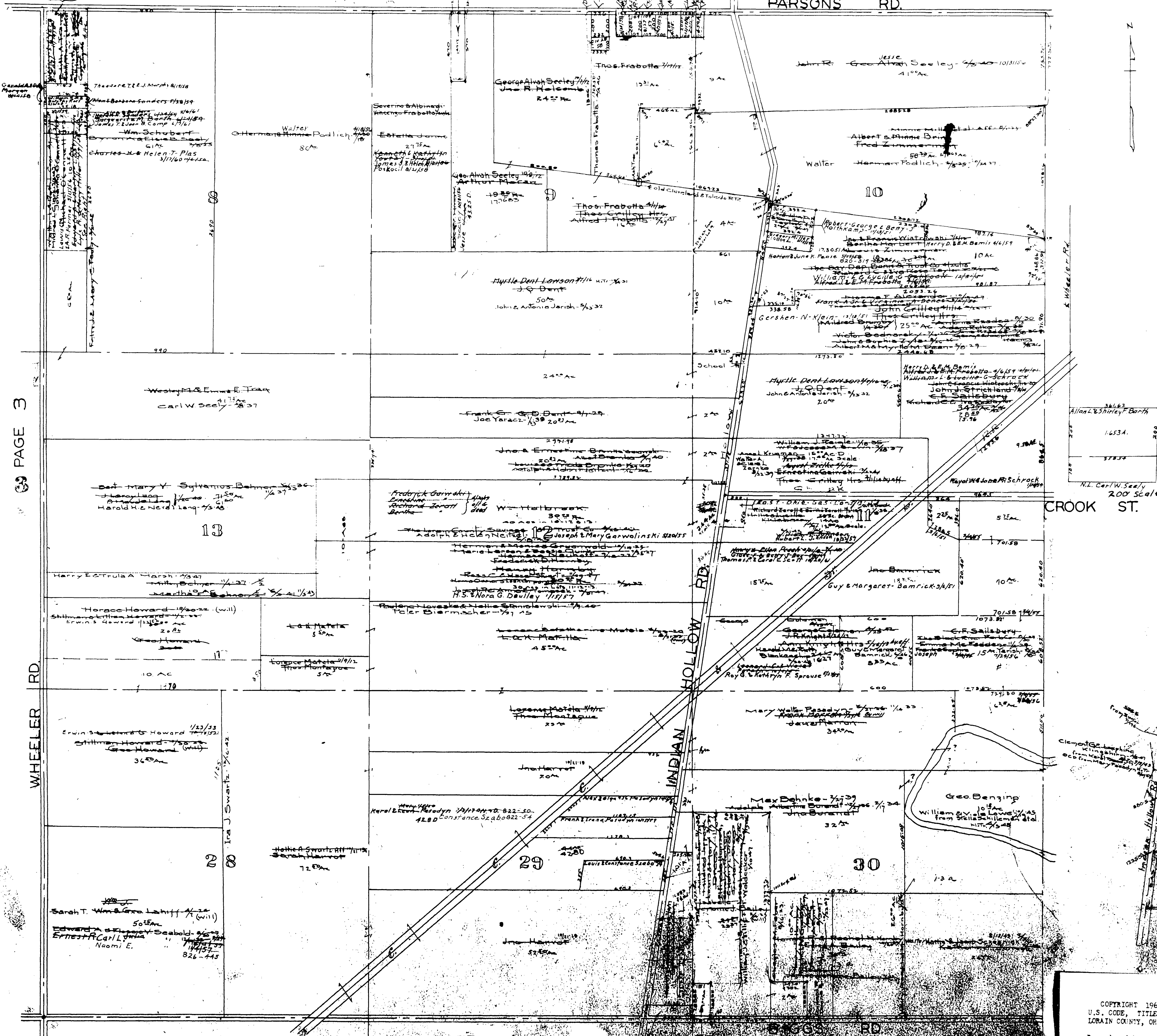
PAGE 2

PAGE 4

COPYRIGHT 1962
U.S. CODE, TITLE 17
LORAIN COUNTY, OHIO

Reproduced by,
Allied Microfilm Corp.
Akron, Ohio

MAP OF
LAGRANGE TOWNSHIP



PAGE 3

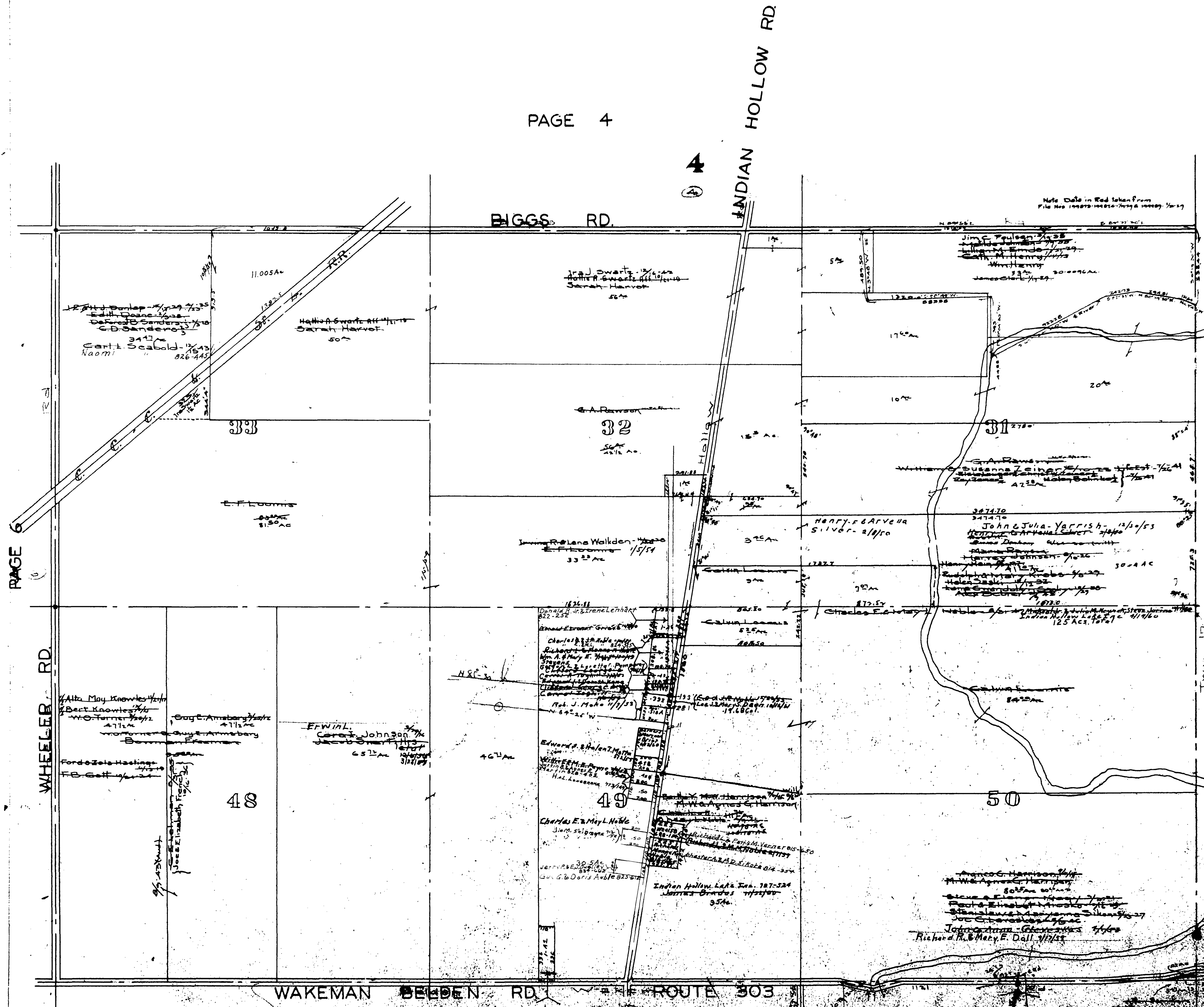
PAGE TWP. GRAFTON

4

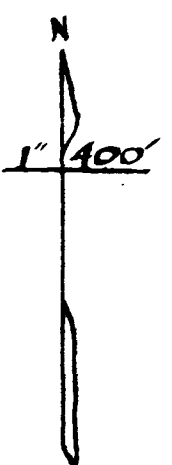
COPYRIGHT 1962
 U.S. CODE, TITLE 17
 LORAIN COUNTY, OHIO

Reproduced by,
 Allied Microfilm Corp.
 Akron, Ohio

5



LaGrange Twp
East Middle Part
Scale 1" = 400'



PAGE 1

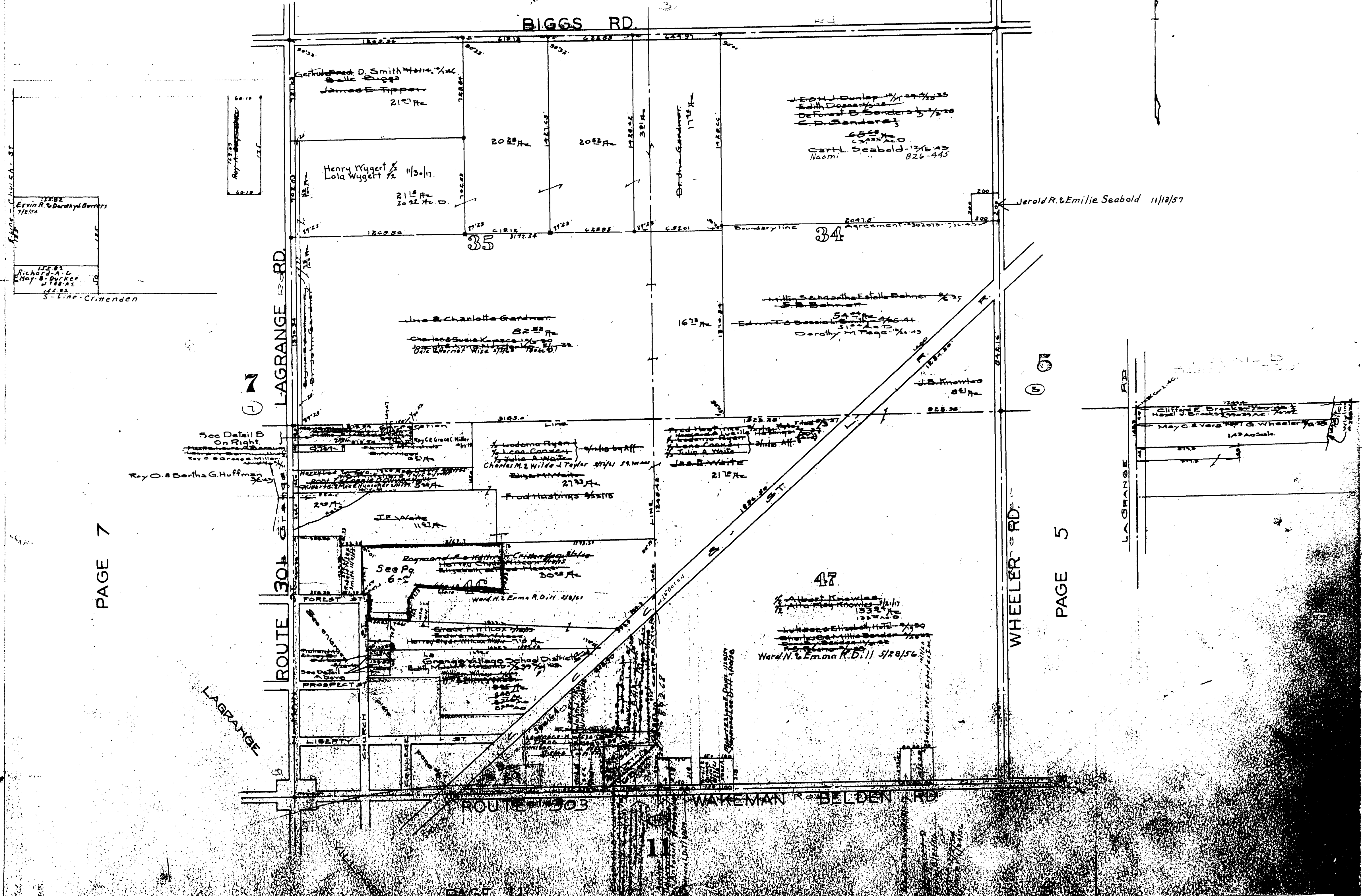
TWP.

GRAFTON

MAP OF
LAGRANGE TOWNSHIP

COPYRIGHT 1962
U.S. CODE, TITLE 17
LORAIN COUNTY, OHIO
Reproduced by,
Allied Microfilm Corp.
Akron, Ohio

Line Clyde Wilcox 1/29/56
1888
1889
1890
1891
1892
1893
1894
1895
1896
1897
1898
1899
1900
1901
1902
1903
1904
1905
1906
1907
1908
1909
1910
1911
1912
1913
1914
1915
1916
1917
1918
1919
1920
1921
1922
1923
1924
1925
1926
1927
1928
1929
1930
1931
1932
1933
1934
1935
1936
1937
1938
1939
1940
1941
1942
1943
1944
1945
1946
1947
1948
1949
1950
1951
1952
1953
1954
1955
1956
1957
1958
1959
1960
1961
1962
1963
1964
1965
1966
1967
1968
1969
1970
1971
1972
1973
1974
1975
1976
1977
1978
1979
1980
1981
1982
1983
1984
1985
1986
1987
1988
1989
1990
1991
1992
1993
1994
1995
1996
1997
1998
1999
2000



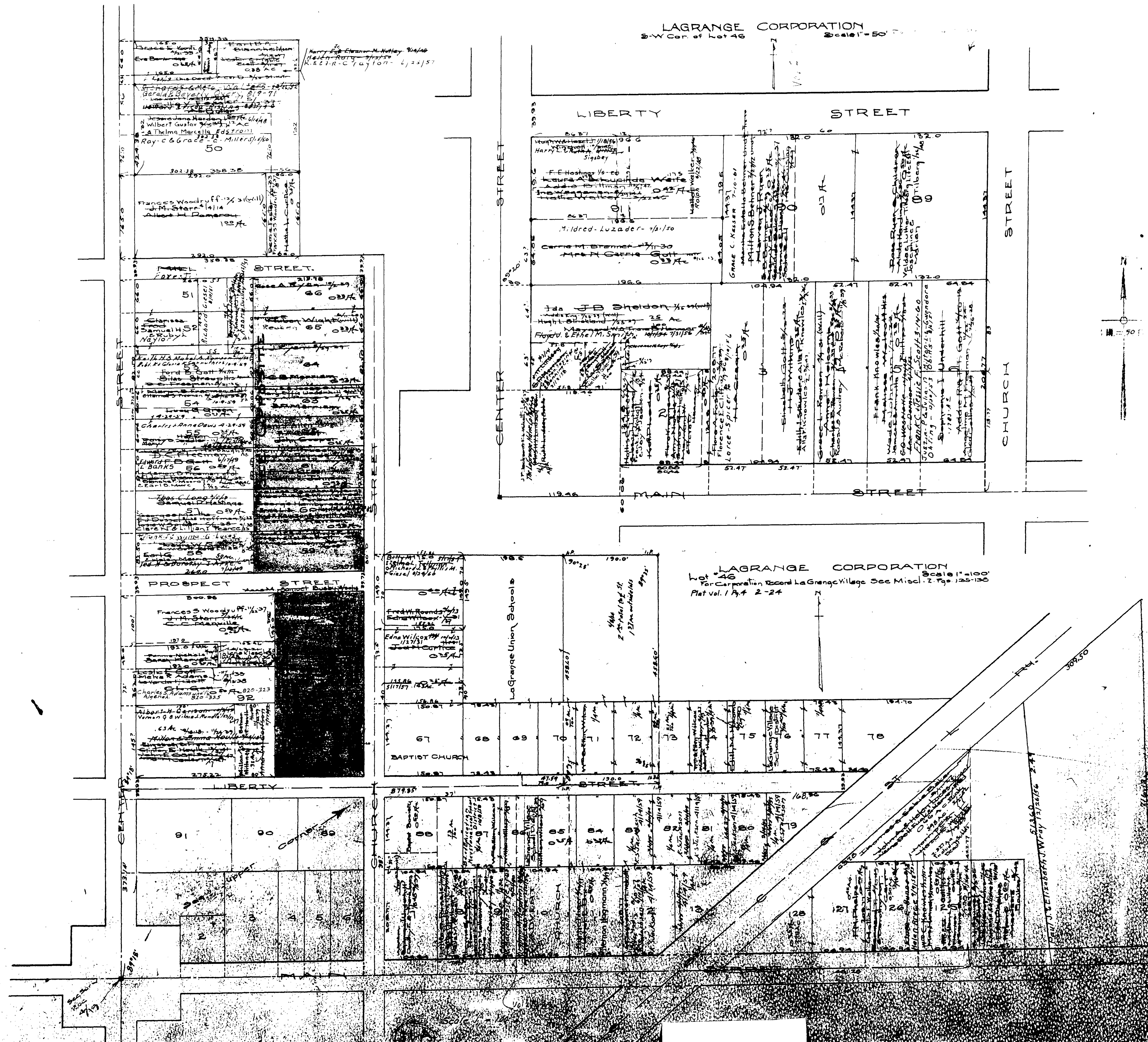
PAGE 7

PAGE 5

PAGE 11

MAP OF
LAGRANGE TOWNSHIP

COPYRIGHT 1962
U.S. CODE, TITLE 17
LORAIN COUNTY, OHIO
Reproduced by
Allied Microfilm Corp.
Akron, Ohio

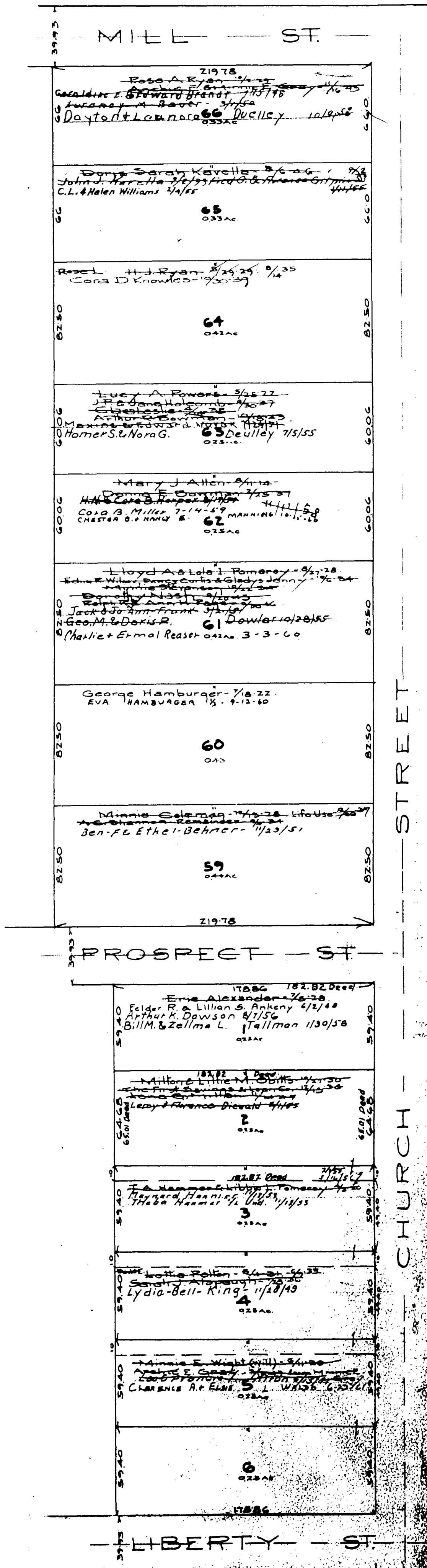


LAGRANGE CORPORATION
S-W Cor. of Lot 46
Scale 1" = 50'

LAGRANGE CORPORATION
For Corporation Record LaGrange Village See Misc. 2, Pgs. 125-130
Plat Vol. 1, P. 2-24
Scale 1" = 100'

COPYRIGHT 1962
U.S. CODE, TITLE 17
LORAIN COUNTY, OHIO
Reproduced by,
Allied Microfilm Corp.
Akron, Ohio

MAP OF
LAGRANGE TOWNSHIP

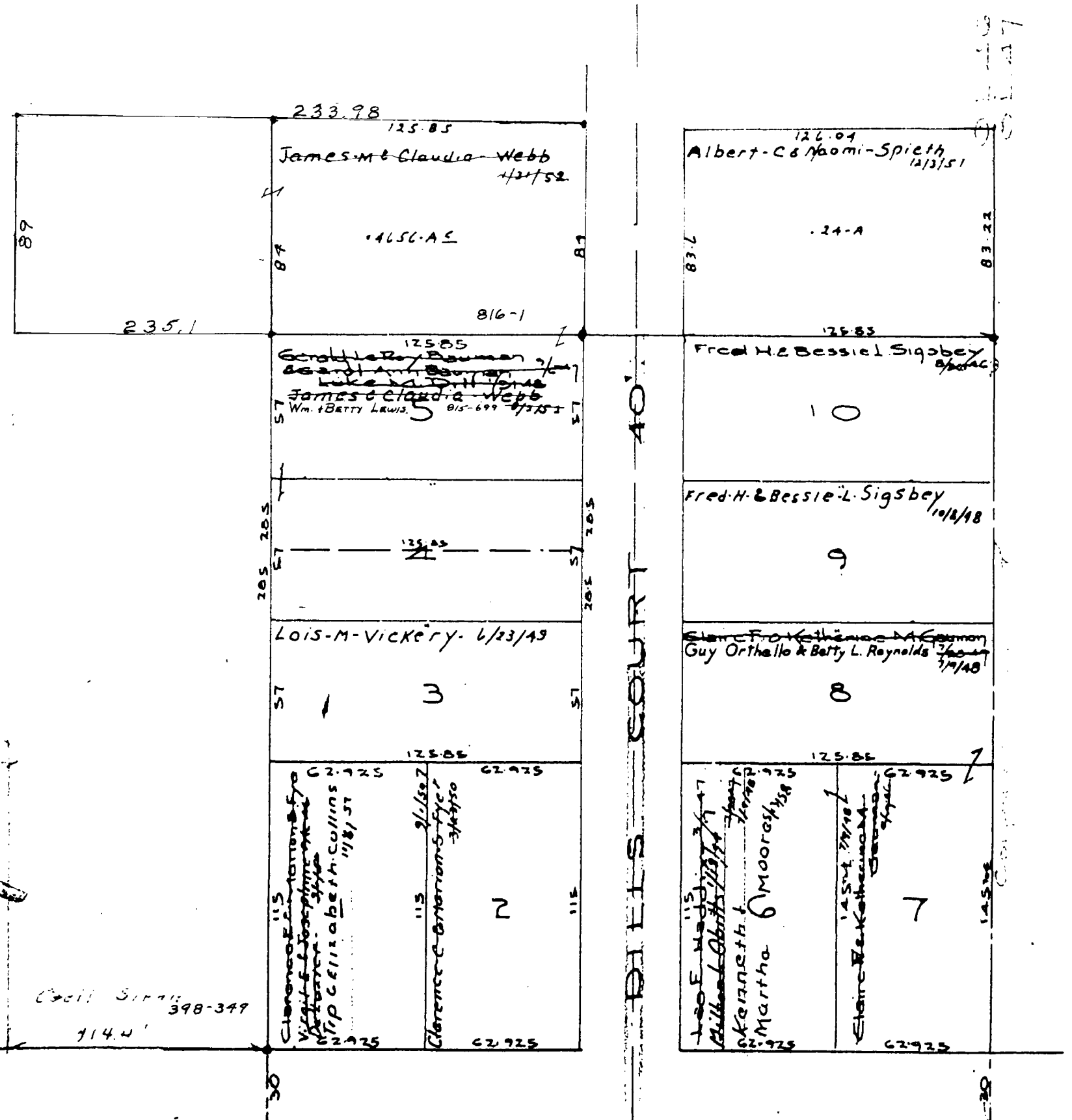


46

MAP OF
LAGRANGE TOWNSHIP

COPYRIGHT 1962
U.S. CODE, TITLE 17
LORAIN COUNTY, OHIO
Reproduced by,
Allied Microfilm Corp.
Akron, Ohio

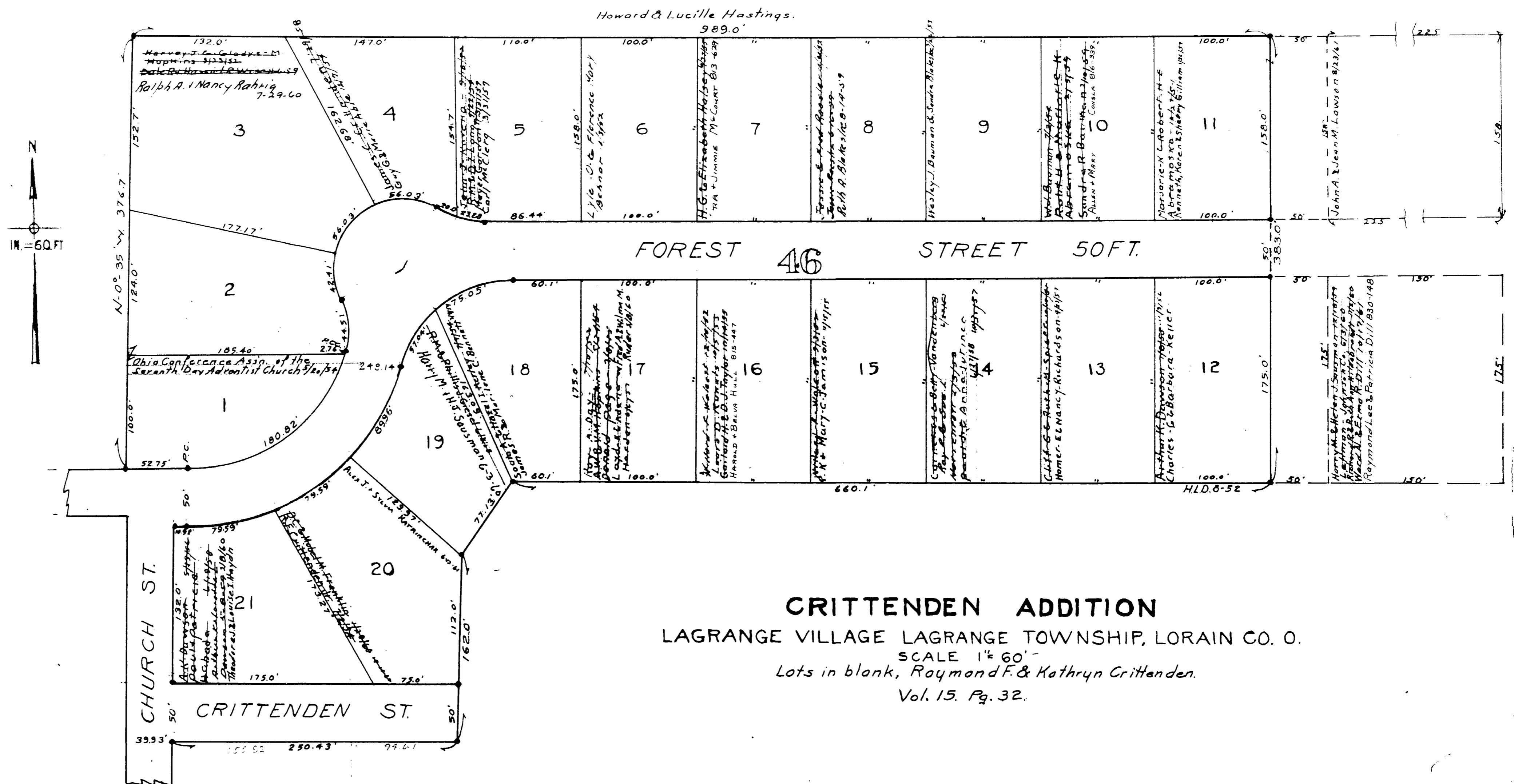
0116



MAP OF
LAGRANGE TOWNSHIP

COPYRIGHT 1962
U.S. CODE, TITLE 17
LORAIN COUNTY, OHIO
Reproduced by,
Allied Microfilm Corp.
Akron, Ohio

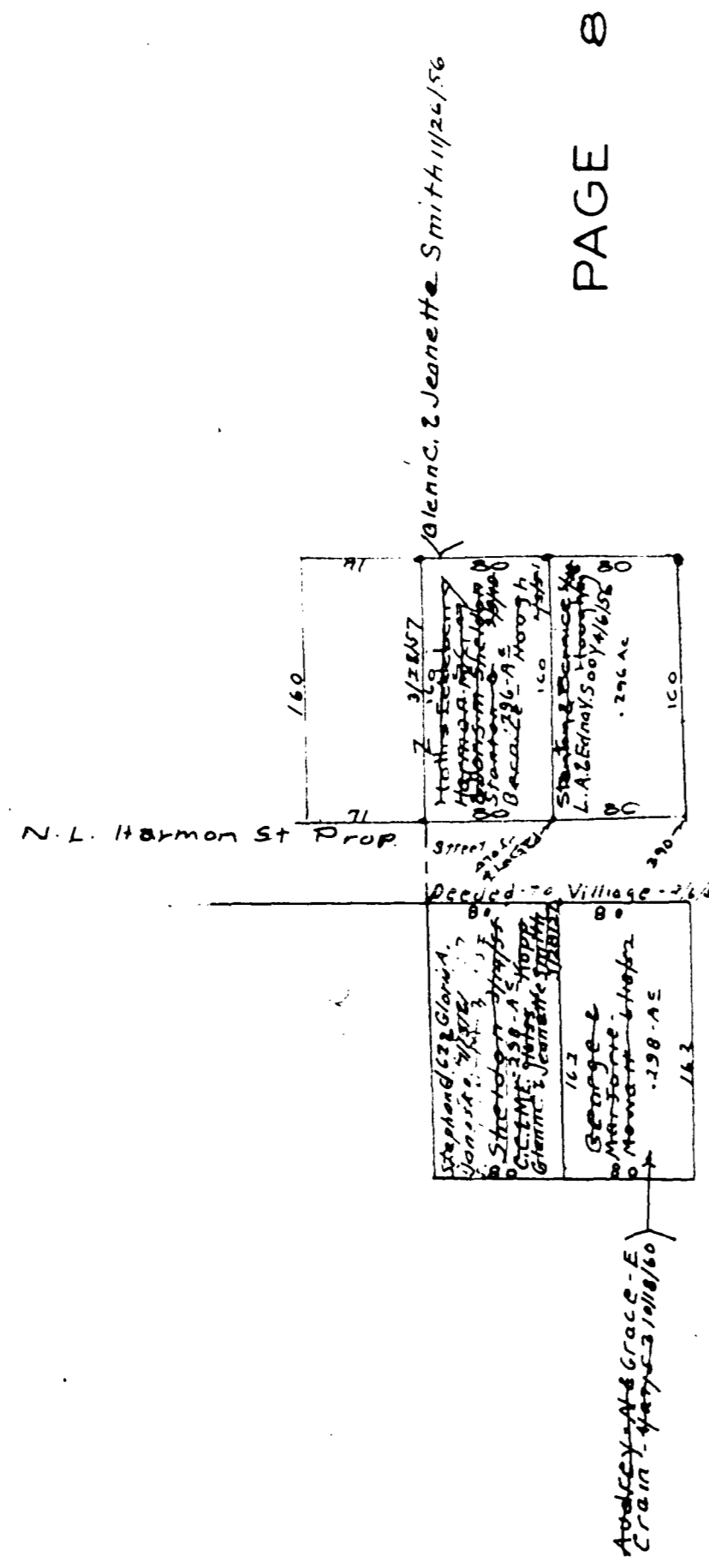
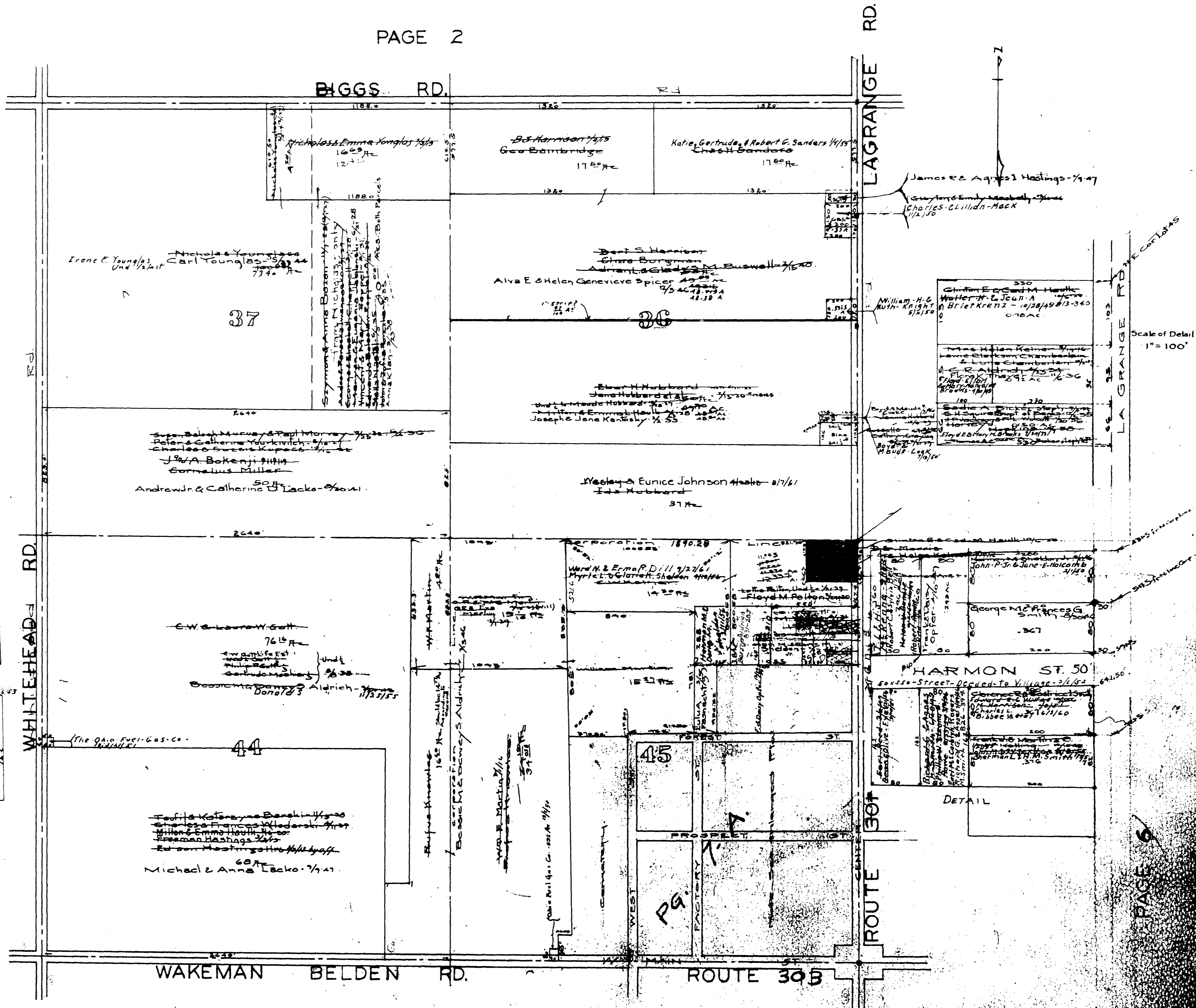
WAKEMAN BELDEN RD
EAST MAIN ST
SCALE - 1" = 50 Feet
Dills Subdivision Vol 13 Pg 46
Lots in blank - Ward N 2 Erma R Dill - 1/28/46



CRITTENDEN ADDITION
LAGRANGE VILLAGE LAGRANGE TOWNSHIP, LORAIN CO. O.
SCALE 1" = 60'
Lots in blank, Raymond F. & Kathryn Crittenden.
Vol. 15. Pg. 32.

MAP OF
LAGRANGE TOWNSHIP

COPYRIGHT 1962
U.S. CODE, TITLE 17
LORAIN COUNTY, OHIO
Reproduced by,
Allied Microfilm Corp.
Akron, Ohio



PAGE 8

PAGE 6

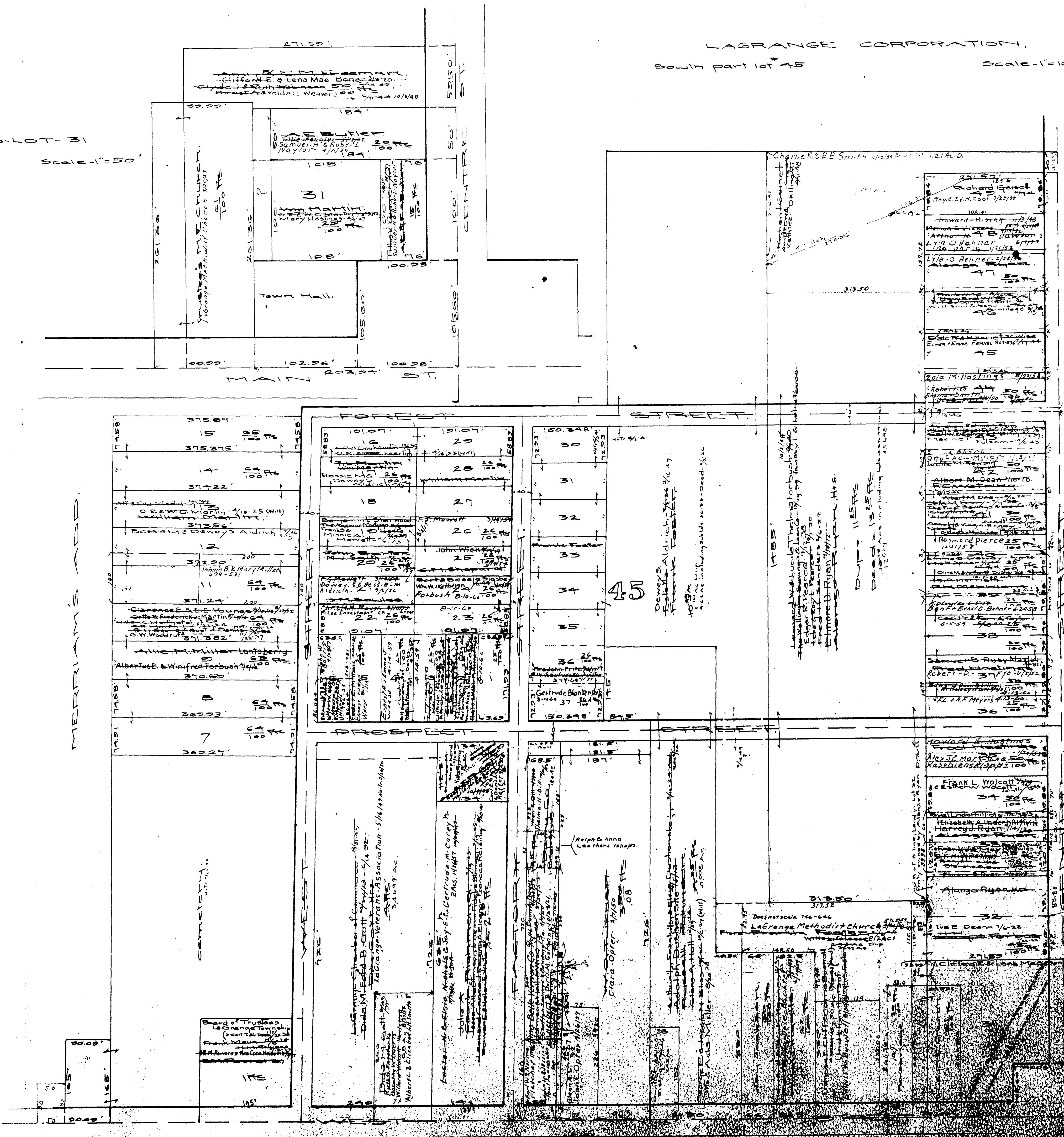
MAP OF
LAGRANGE TOWNSHIP

COPYRIGHT 1962
U.S. CODE, TITLE 17
LORAIN COUNTY, OHIO

Reproduced by,
Allied Microfilm Corp.
Akron, Ohio

LAGRANGE CORPORATION
South part lot 45
Scale - 1"=100'

Sub-Lot-31
Scale - 1"=50'



MAP OF
LAGRANGE TOWNSHIP

COPYRIGHT 1962
U.S. CODE, TITLE 17
LORAIN COUNTY, OHIO
Reproduced by,
Allied Microfilm Corp.
Akron, Ohio

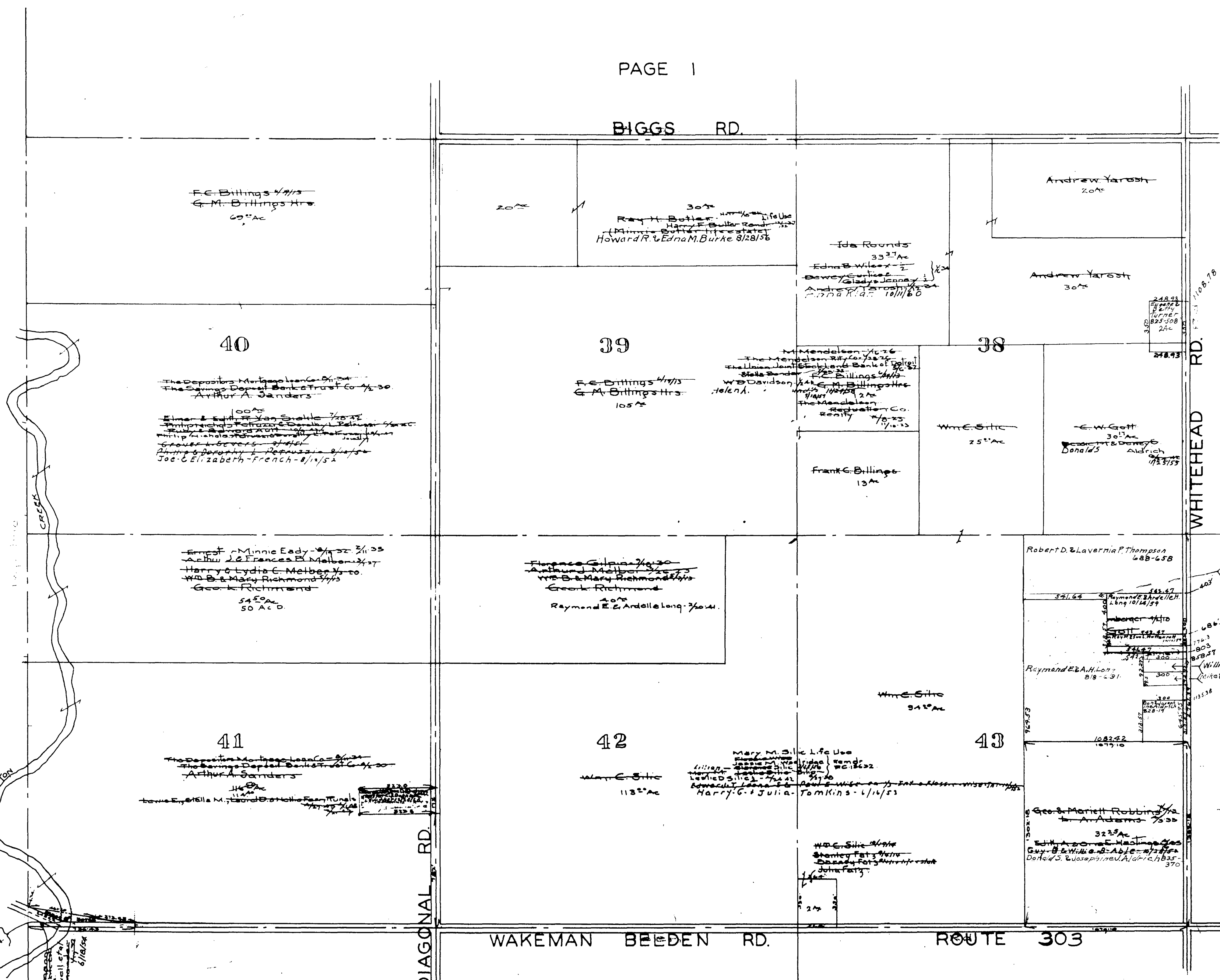
PAGE 1

BIGGS RD.

LaGrange Twp
West Middle Part
Scale 1" = 400'

PAGE 14

PITTSFIELD TWP



PAGE 9

WAKEMAN BEEDEN RD.

ROUTE 303

NICKLE-PLATE DIAGONAL RD.

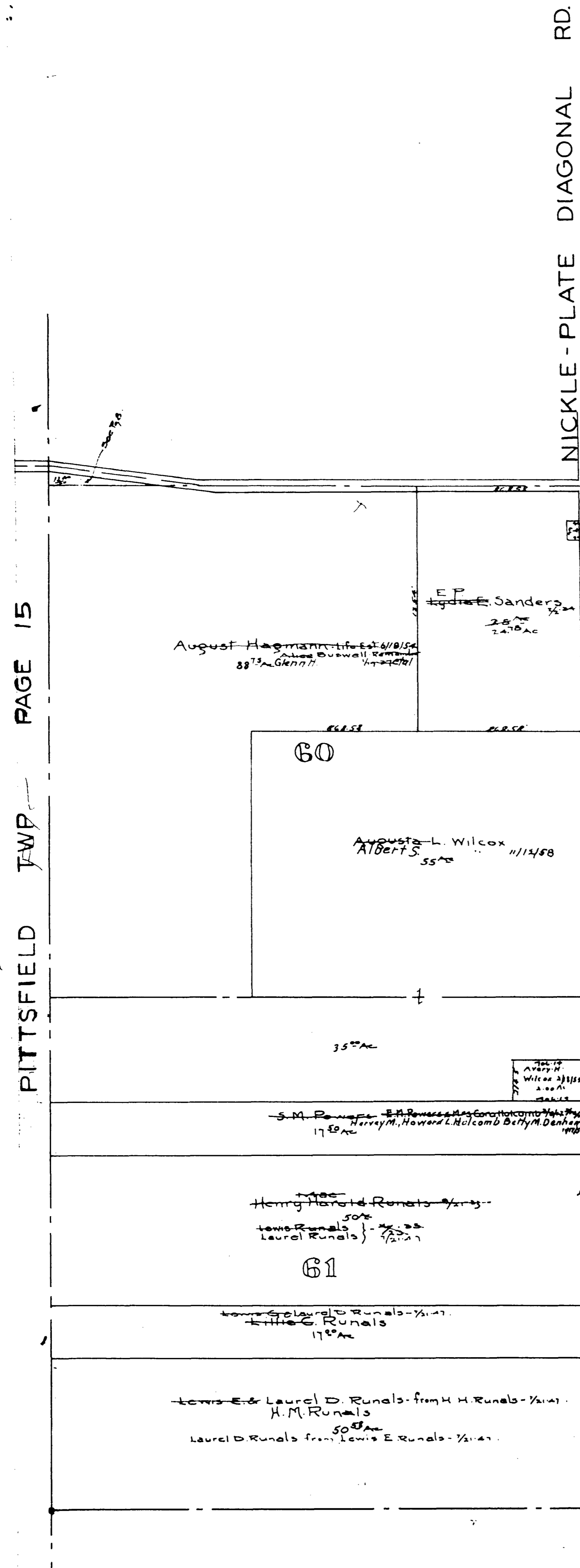
WHITEHEAD RD.

PAGE 7

MAP OF
LAGRANGE TOWNSHIP

COPYRIGHT 1962
U.S. CODE, TITLE 17
LORAIN COUNTY, OHIO
Reproduced by,
Allied Microfilm Corp.
Akron, Ohio

PITTSFIELD TWP PAGE 15



NICKLE - PLATE DIAGONAL RD.

WAKEMAN BELDEN RD. ROUTE 303

LaGrange Twp.
West Middle Part.
Scale 1" = 400'

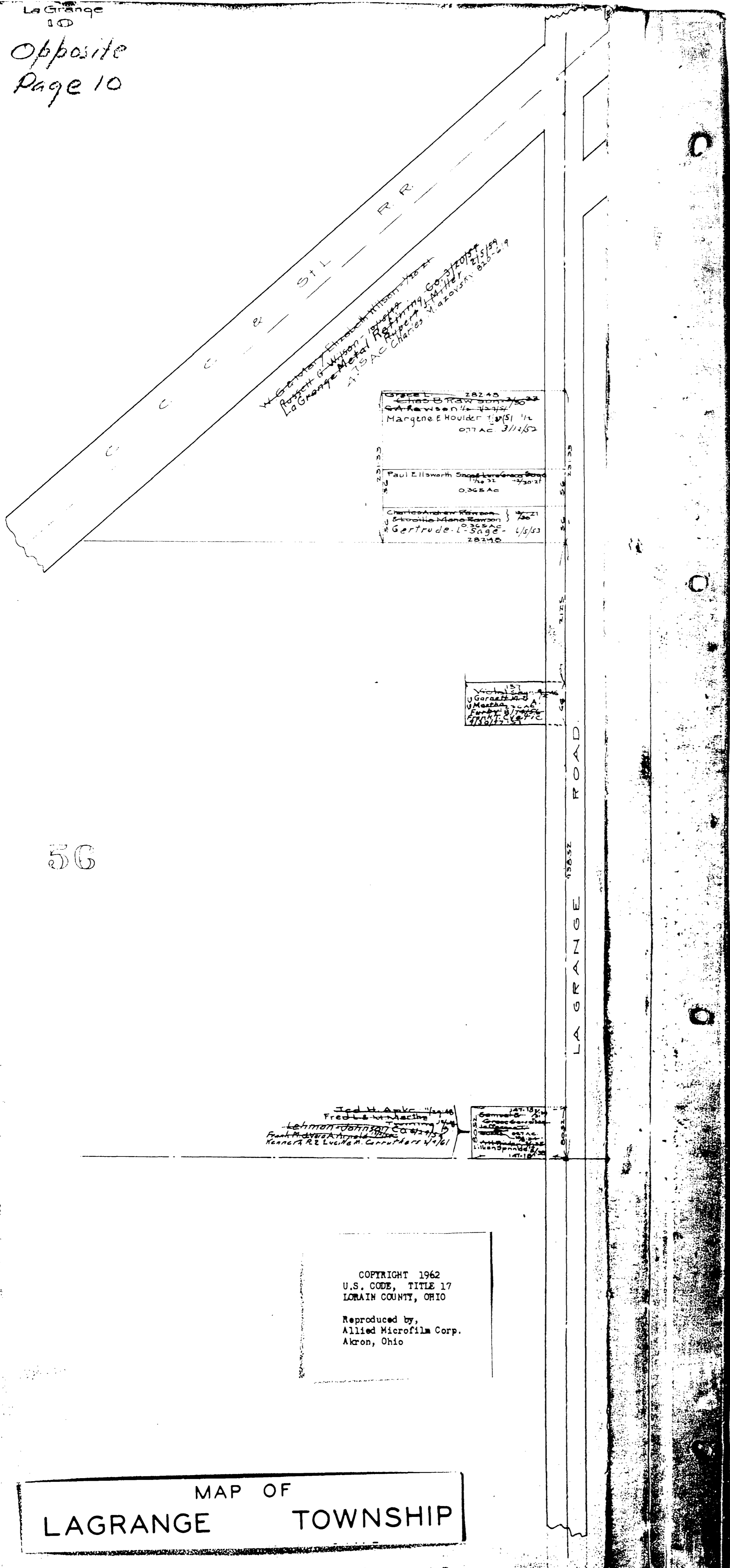


WHITEHEAD RD.

PAGE 10

MAP OF
LAGRANGE TOWNSHIP

COPYRIGHT 1962
U.S. CODE, TITLE 17
LORAIN COUNTY, OHIO
Reproduced by,
Allied Microfilm Corp.
Akron, Ohio

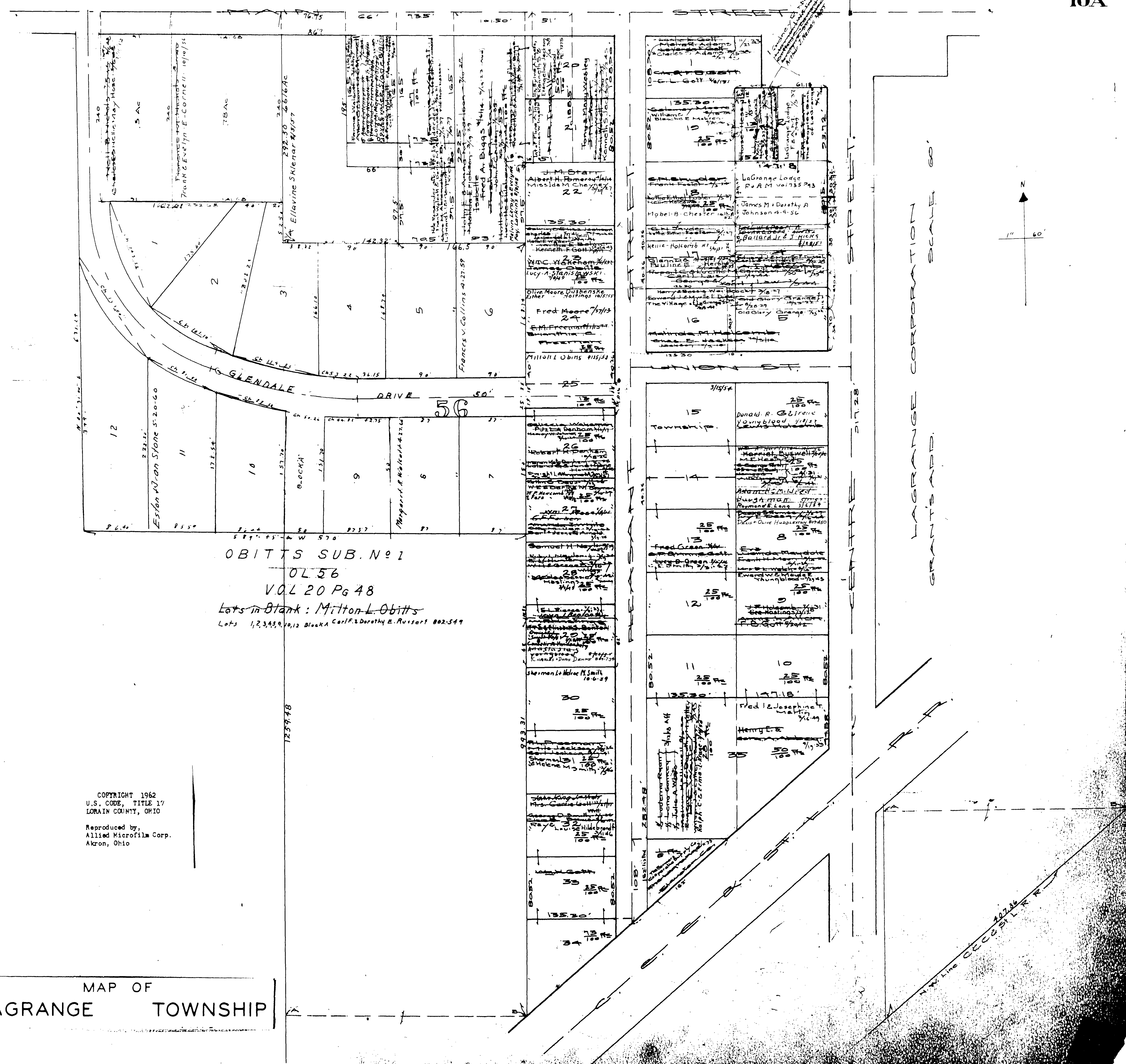


56

Jed H. Anke 1/4 1/4 1/4
 Fred L. W. Machine
 Lehman Johnson
 Frank H. ...
 Kenneth R. ...

COPYRIGHT 1962
 U.S. CODE, TITLE 17
 LORAIN COUNTY, OHIO
 Reproduced by,
 Allied Microfilm Corp.
 Akron, Ohio

MAP OF
 LAGRANGE TOWNSHIP



OBITTS SUB. N^o 1
 OL 56
 VOL 20 Pg 48
 Lots in Blank: Milton L. Obitts
 Lots 1, 2, 3, 4, 5, 6, 7, 8, 9, 10, 11, 12 Block A Carl F. & Dorothy E. Russart 802-549

COPYRIGHT 1962
 U.S. CODE, TITLE 17
 LORAIN COUNTY, OHIO
 Reproduced by,
 Allied Microfilm Corp.
 Akron, Ohio

MAP OF
 LAGRANGE TOWNSHIP

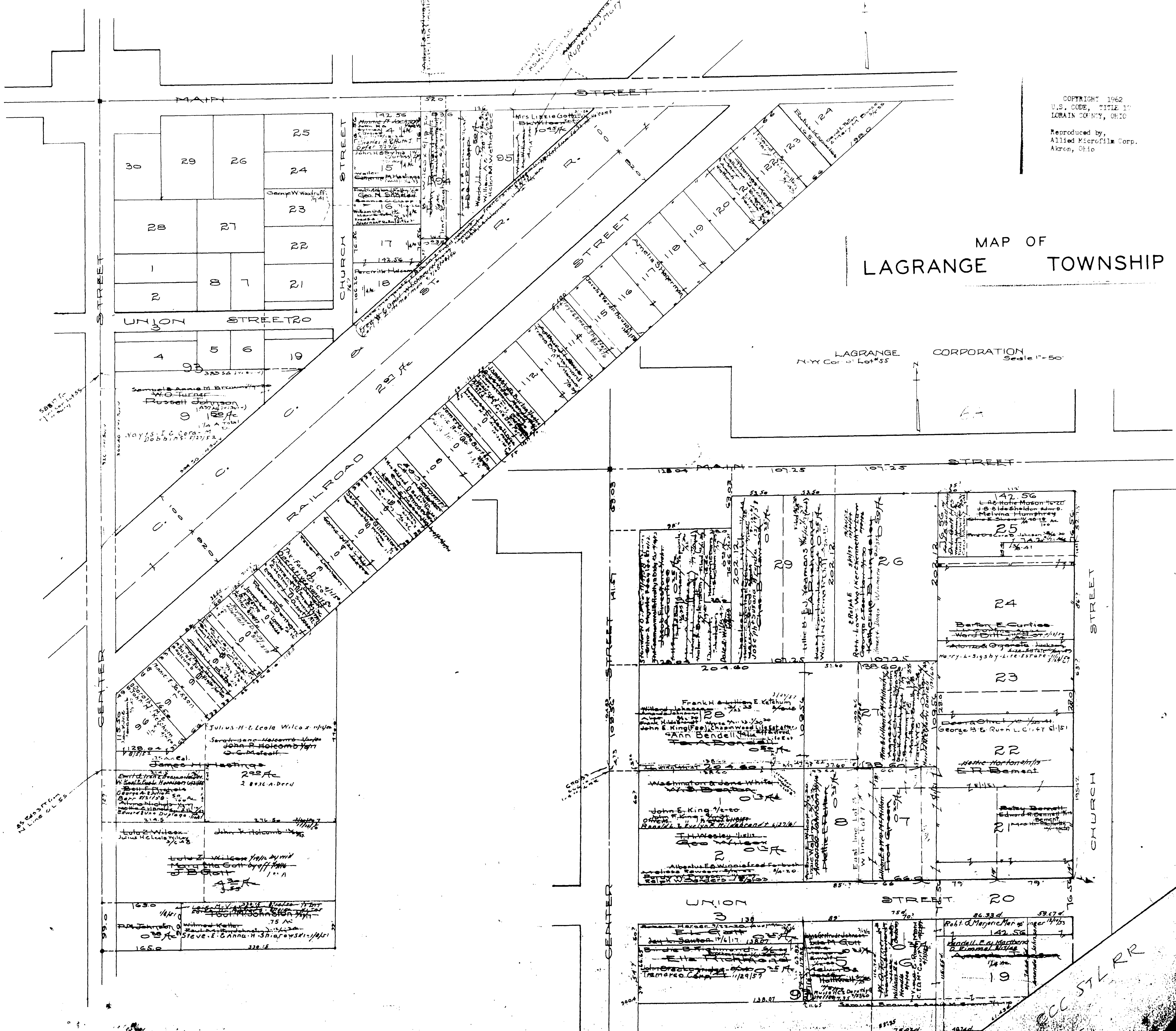
LAGRANGE CORPORATION
 GRANT'S ADD. SCALE 60'

LAGRANGE CORPORATION
Lot # 55
Scale 1"=100

COPYRIGHT 1962
U.S. CODE, TITLE 17
LORAIN COUNTY, OHIO
Reproduced by,
Allied Microfilm Corp.
Akron, Ohio

MAP OF LAGRANGE TOWNSHIP

LAGRANGE CORPORATION
N.Y. Corp. Lot #55
Scale 1"=50

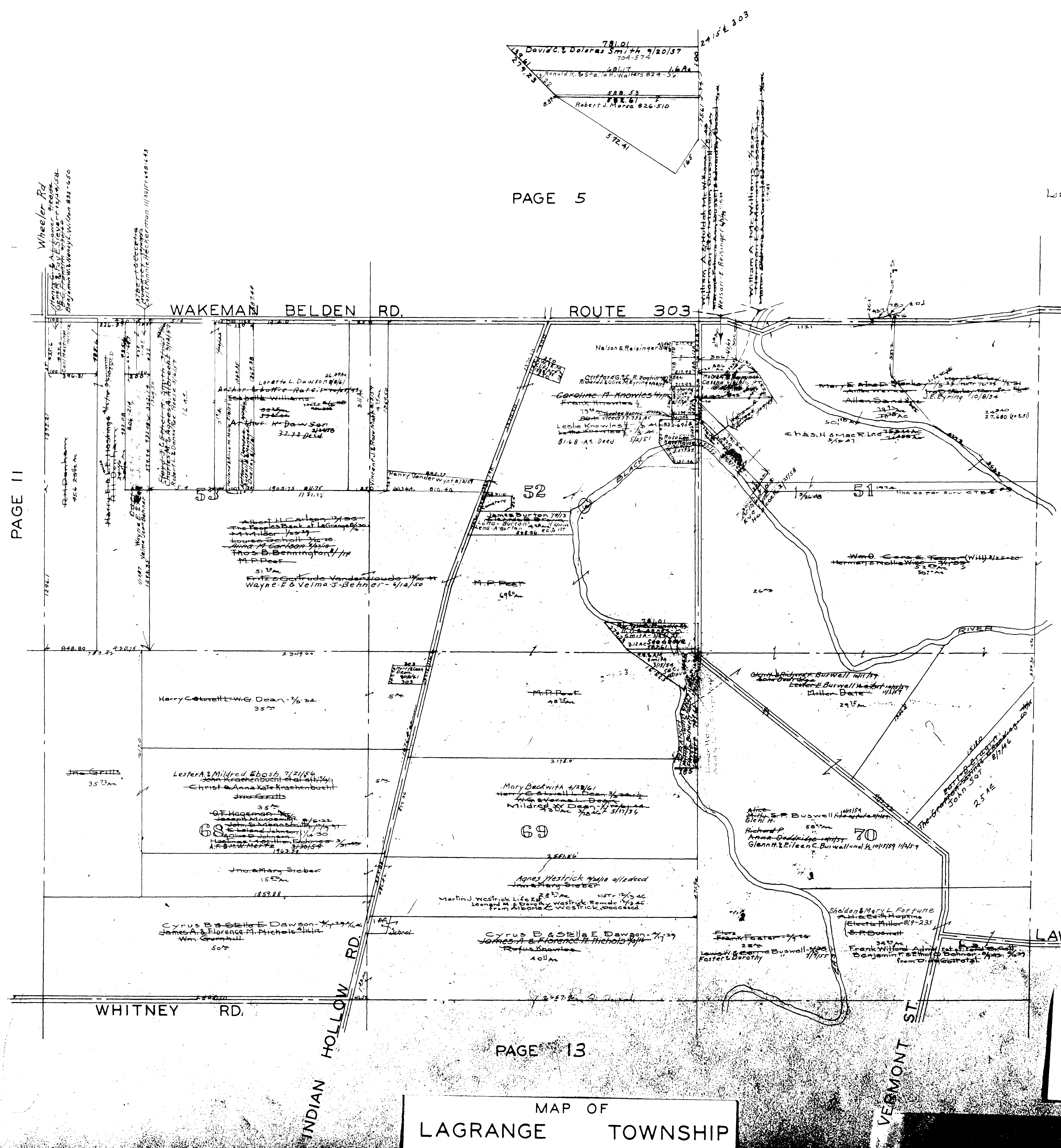


CC 57 LRR

PAGE 11

PAGE 4

GRAFTON TWP



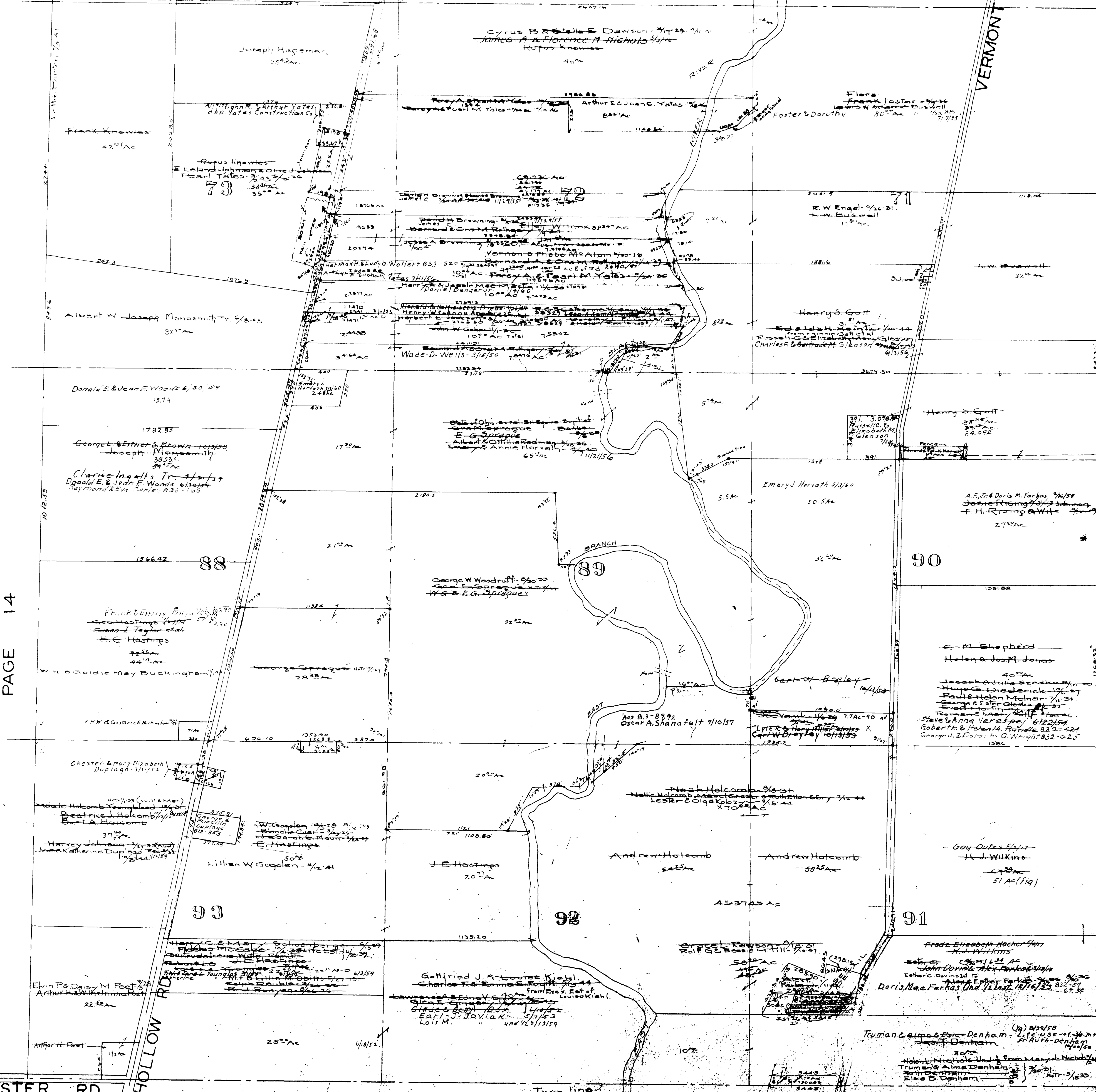
MAP OF
LAGRANGE TOWNSHIP

COPYRIGHT 1962
U.S. CODE, TITLE 17
LORAIN COUNTY, OHIO

Reproduced by
Allied Microfilm Corp.
Akron, Ohio

WHITNEY RD.

VERMONT ST.



Wm. Grainger Sup.
 Dean East Corner
 Cash 1.11 Ac.

COPYRIGHT 1962
 U.S. CODE, TITLE 17
 LOHAIN COUNTY, OHIO

Reproduced by,
 Allied Microfilm Corp.
 Akron, Ohio

Richard & Elizabeth Estlin
 Wm. C. Weaver
 Wm. W. Moore
 Clyde C. March

PAGE 14

PAGE 4
TWP. 4
GRAFTON

WEBSTER RD.

INDIAN HOLLOW RD.

PENFIELD TWP.

PAGE 3

MAP OF
 LAGRANGE TOWNSHIP

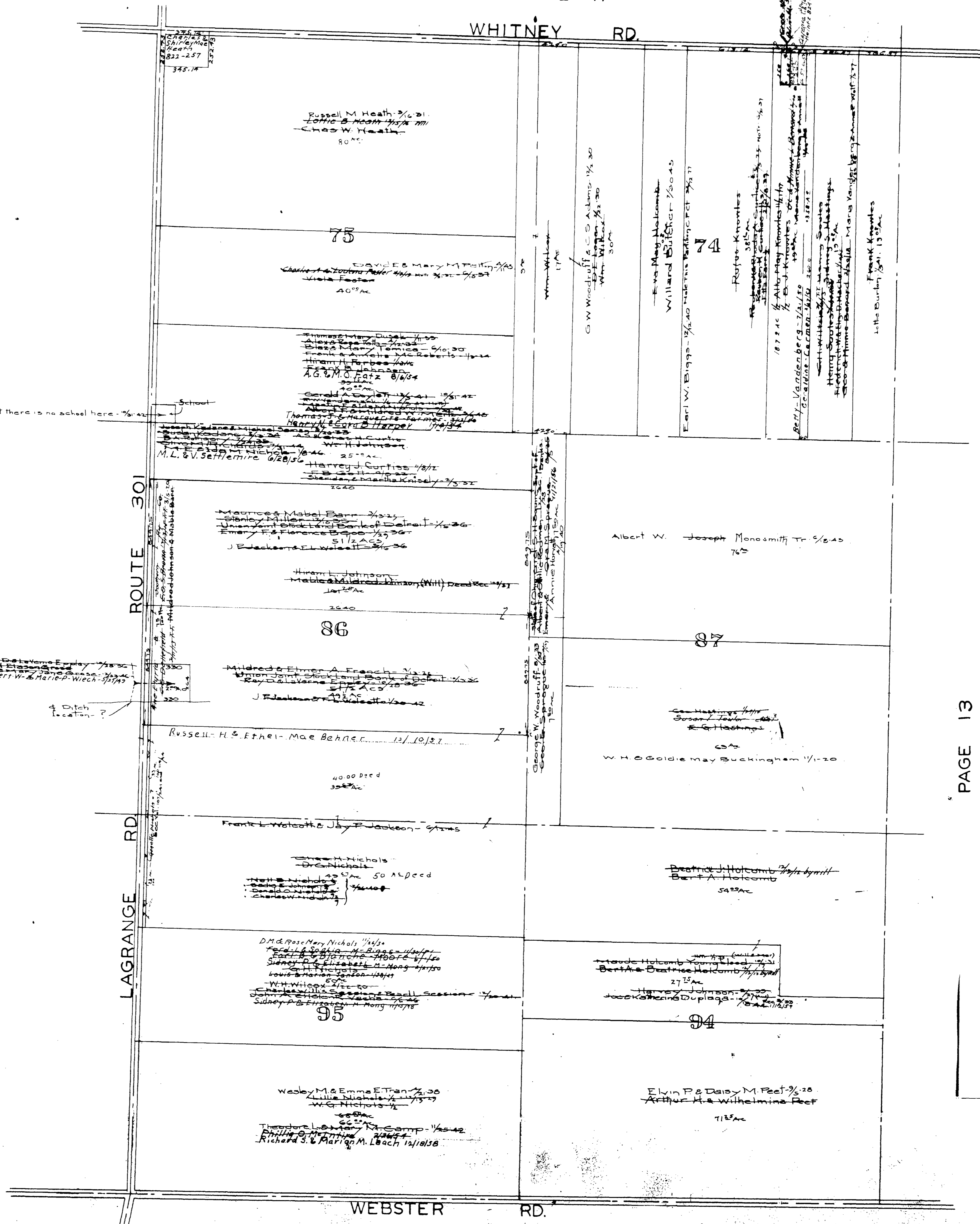
WHITNEY RD.

LaGrange Twp.
South Middle Part.
Scale 1" = 400'

See Misc. App. No. 294295 stating that there is no school here.

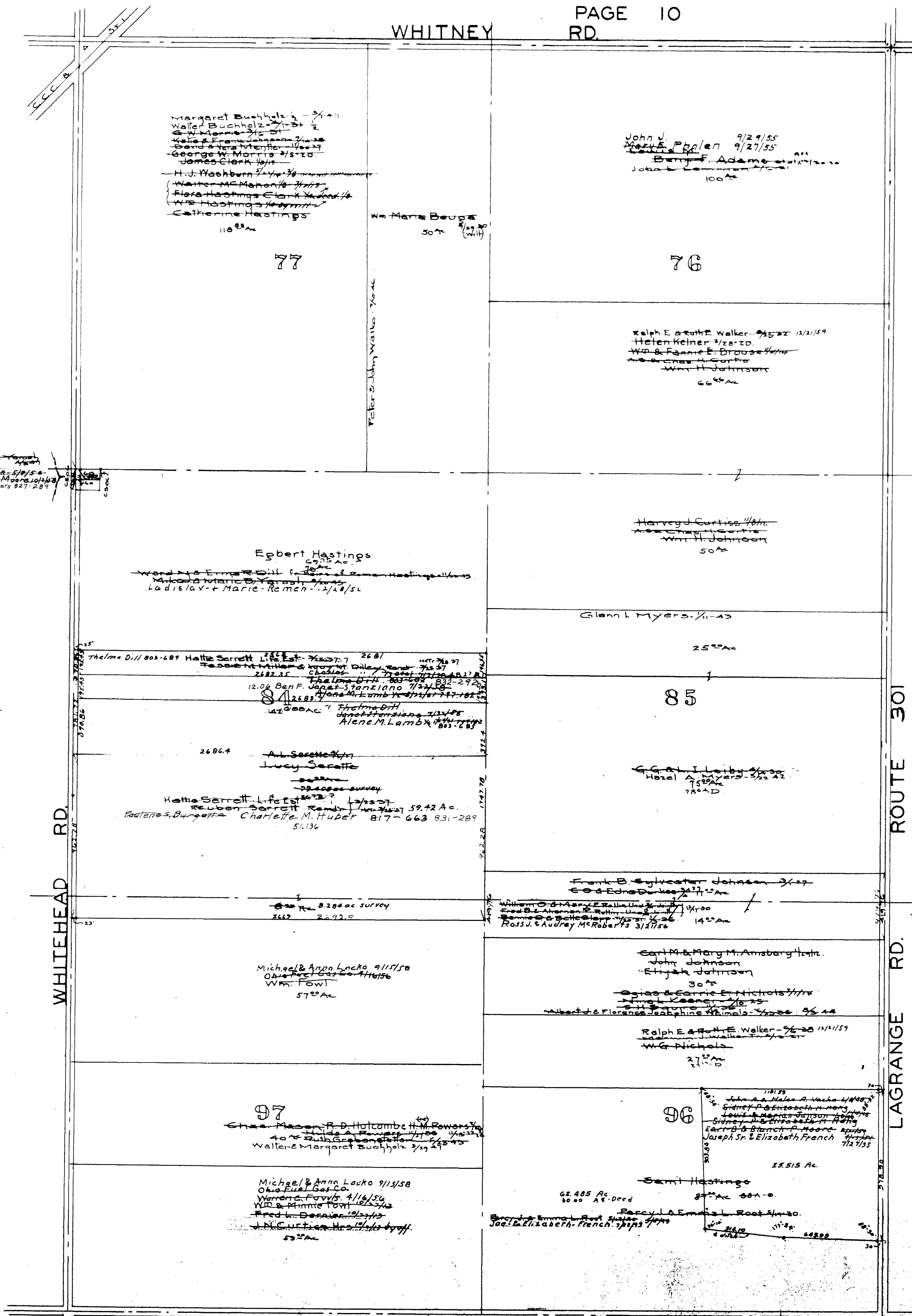
PAGE 15

PAGE 13



COPYRIGHT 1962
U.S. CODE, TITLE 17
LORAIN COUNTY, OHIO
Reproduced by,
Allied Microfilm Corp.
Akron, Ohio

LAGRANGE Twp
South Middle Part
Scale 1" = 400'



Emer E. Young
Ladislava
Marie A. Adams 5/18/54
Harley G. & Joyce M. Moore 10/4/60
Earl M. C. ...

PAGE 16

WHITEHEAD RD.

WEBSTER RD.

ROUTE 30
LAGRANGE RD.

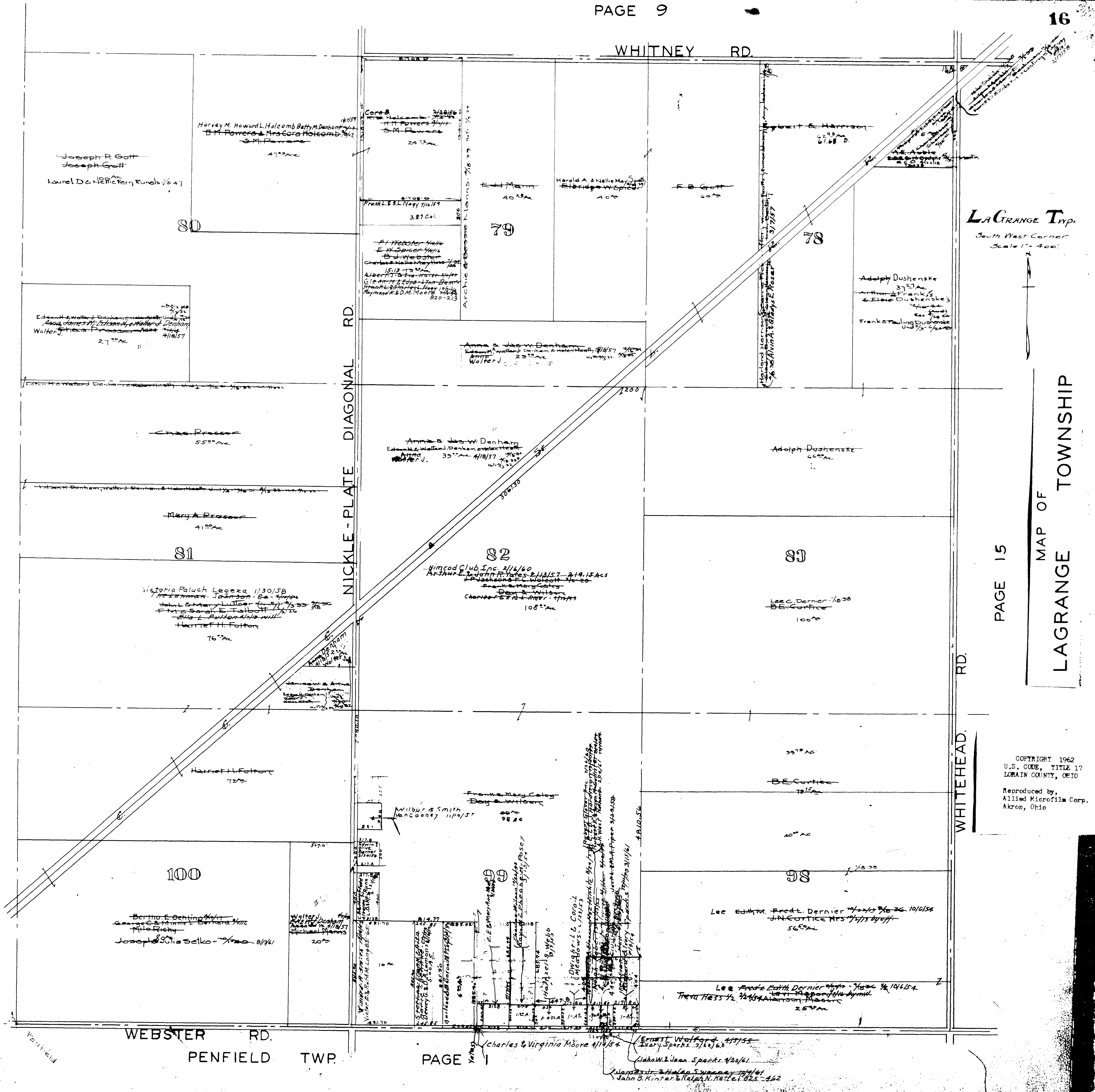
PAGE 14

COPYRIGHT 1962
U.S. CODE, TITLE 17
LORAIN COUNTY, OHIO
Reproduced by,
Allied Microfilm Corp.
Akron, Ohio

PITTSFIELD TWP. PAGE 16

PAGE 15

MAP OF LAGRANGE TOWNSHIP



LAGRANGE TWP.
South West Corner
Scale 1" = 400'

COPYRIGHT 1962
U.S. CODE, TITLE 17
LORAIN COUNTY, OHIO
Reproduced by,
Allied Microfilm Corp.
Akron, Ohio

WEBSTER RD.
PENFIELD TWP.

PAGE 1

Ernest Wolford 4/17/55
John W. & Jean Sparks 4/20/61
John B. Kinter & Ralph N. Hottle 8/25-462