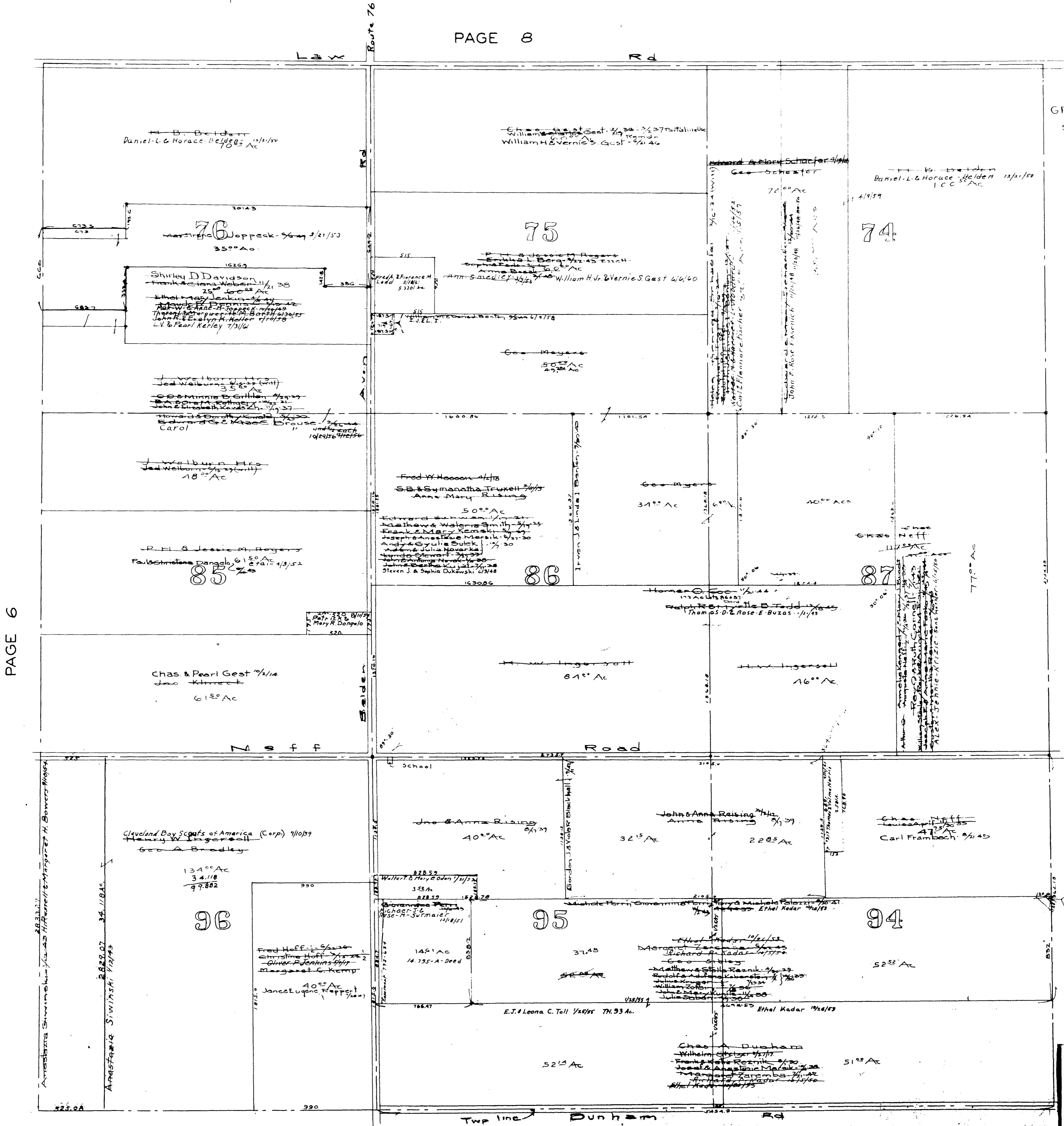


GRAFTON TWP.  
SOUTH PART.  
Scale 1 in. = 400 ft.



PAGE 6

PAGE 10

MAP OF  
GRAFTON TOWNSHIP

MEDINA CO. LITCHFIELD TWP.

COPYRIGHT 1962  
U.S. CODE, TITLE 17  
LORAIN COUNTY, OHIO  
Reproduced by,  
Allied Microfilm Corp.  
Akron, Ohio