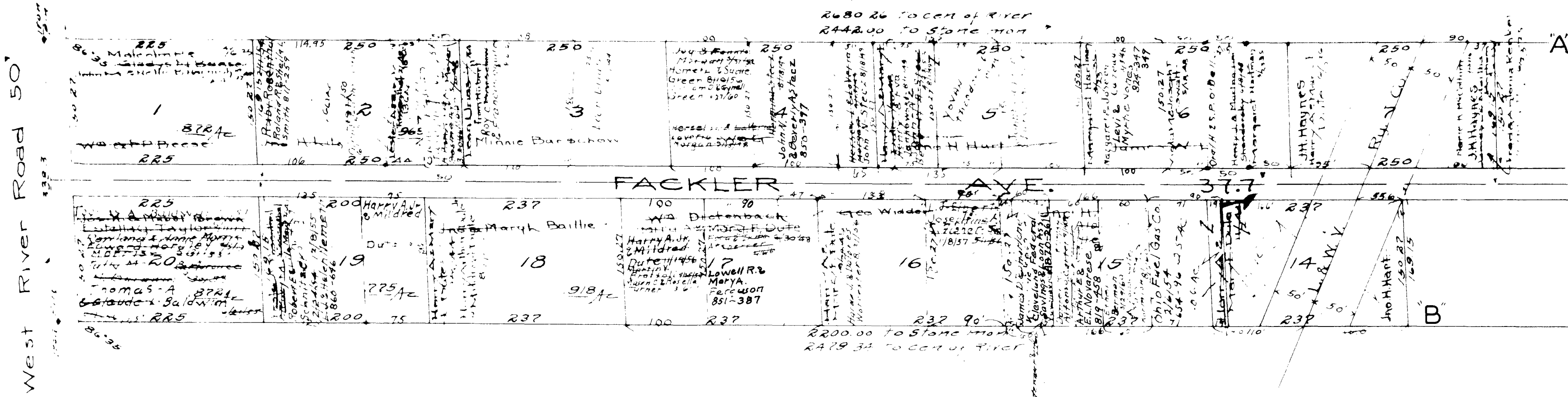


ELYRIA 6868
 Parcel 12-13-14-16
 X
 Scale 1" = 300'

SCALE
 1" = 200 FT.
 Philip Thelma Addins
 Vol 709 Pg 172
 11-22-57
 Philip Thelma Addins
 Vol 503 Pg 33 Exhibit 2-10-53

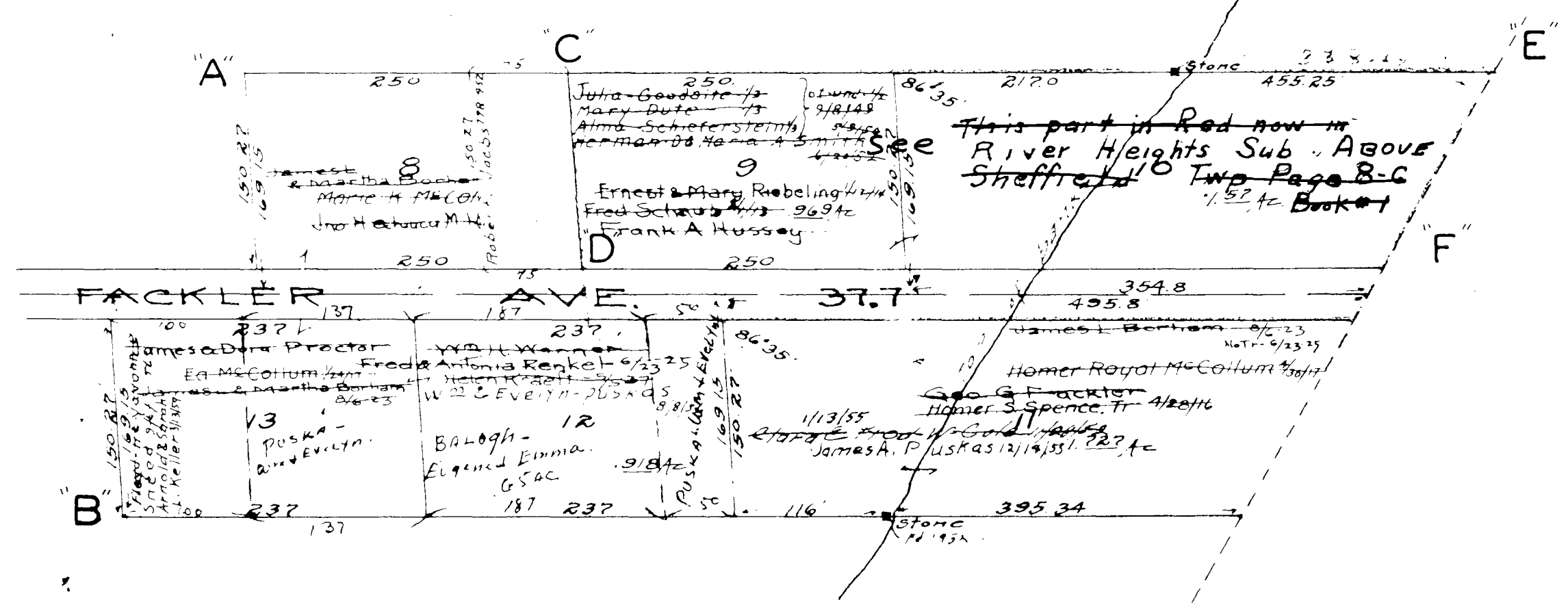
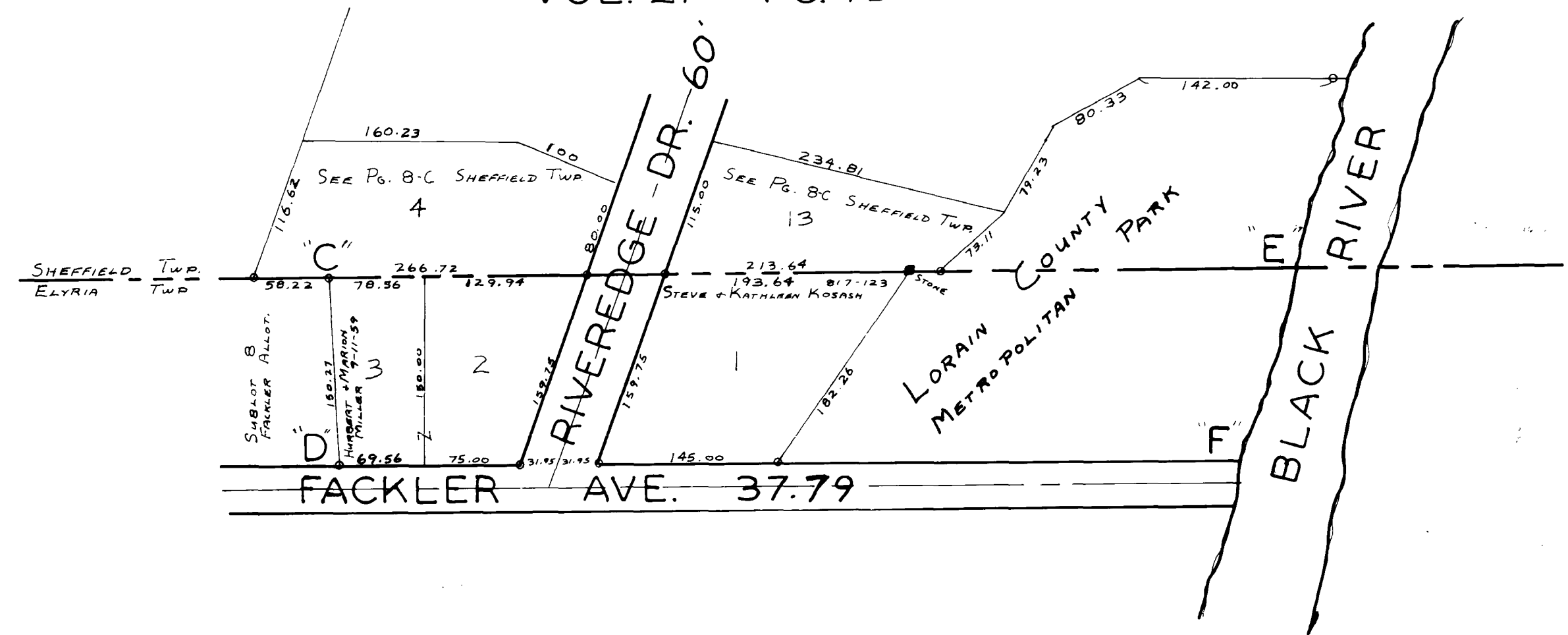
ELYRIA TOWNSHIP

COPYRIGHT 1962
 U.S. CODE, TITLE 17
 LORAIN COUNTY, OHIO
 Reproduced by
 Allied Microfilm Corp.
 Akron, Ohio



RIVER HEIGHTS SUB.
VOL. 21 PG. 13

Scale 1" = 100'



ELYRIA TOWNSHIP

COPYRIGHT 1962
U.S. CODE, TITLE 17
LORAIN COUNTY, OHIO
Reproduced by,
Allied Microfilm Corp.
Akron, Ohio