

ELYRIA 6868

Part of 1344 16

Scale 1" = 200'

22

22

19

SCALE 1" = 200 FT.

Philip Thelma Addins

Vol 503 Pg 173

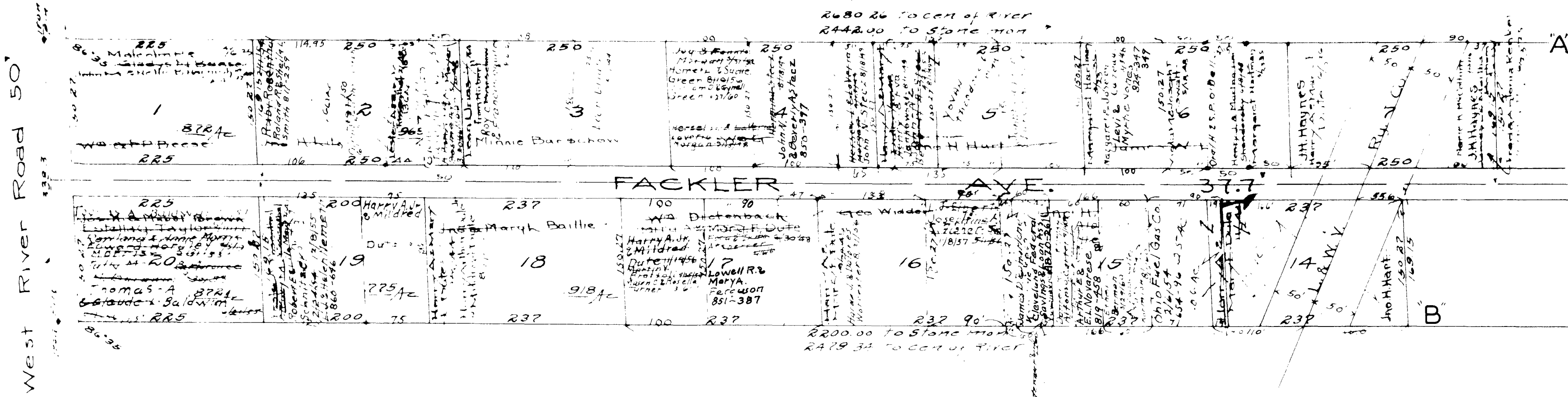
11-22-57

Philip Thelma Addins  
Vol 503 Pg 173 Exhibit 2-10-57

# ELYRIA TOWNSHIP

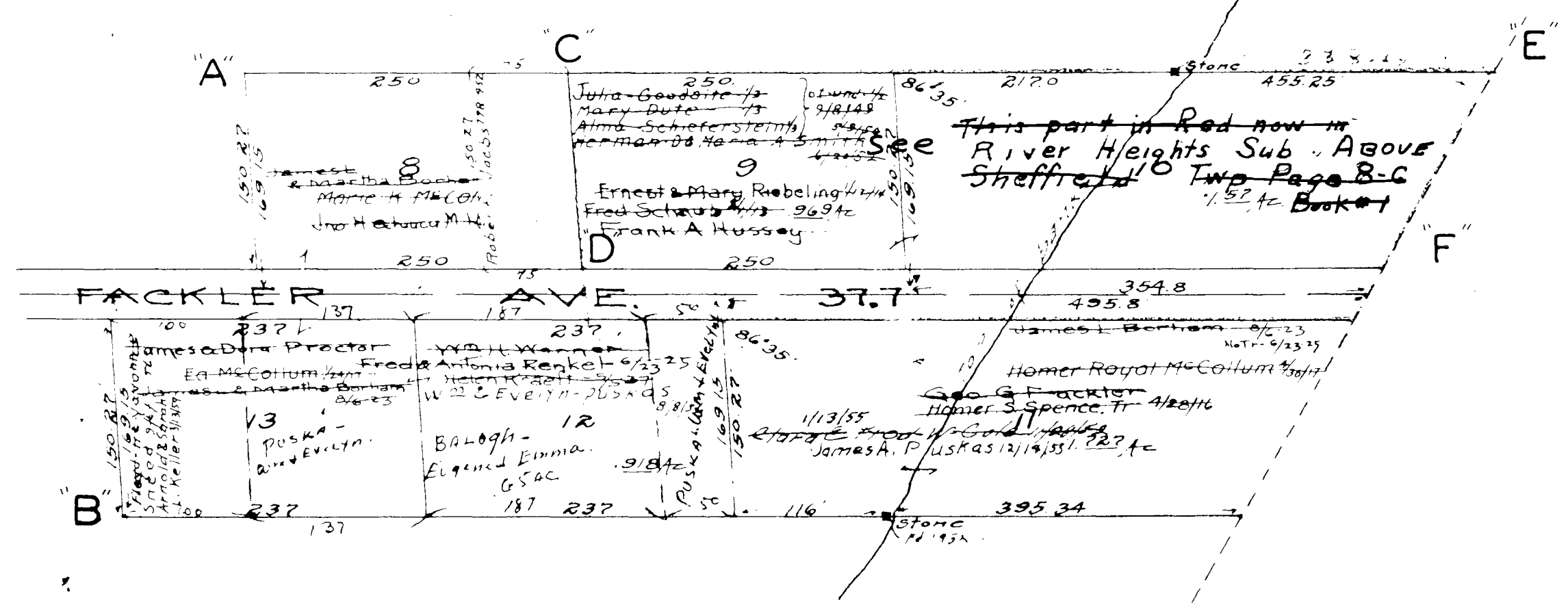
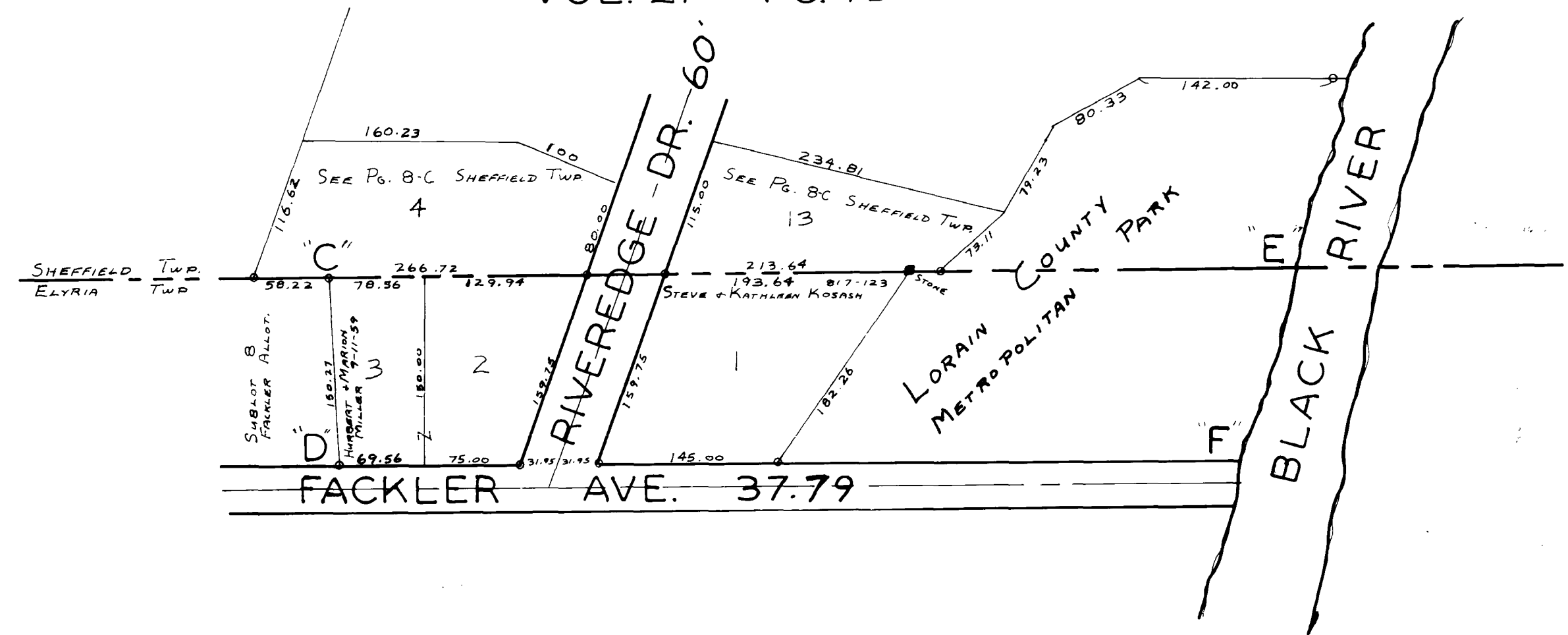
COPYRIGHT 1962  
U.S. CODE, TITLE 17  
LORAIN COUNTY, OHIO

Reproduced by  
Allied Microfilm Corp.  
Akron, Ohio



RIVER HEIGHTS SUB. VOL. 21 PG. 13

Scale 1" = 100'

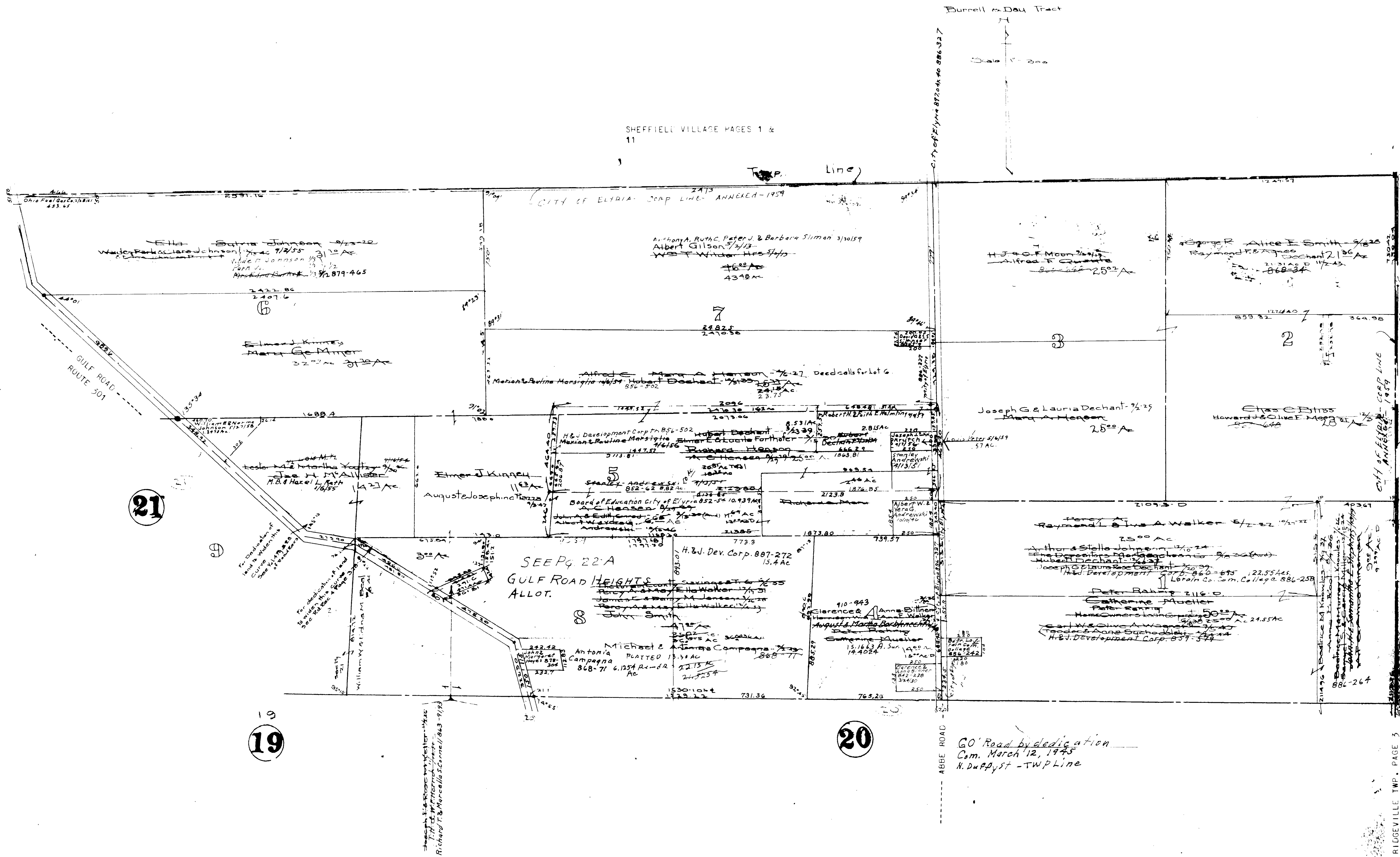


ELYRIA TOWNSHIP

COPYRIGHT 1962 U.S. CODE, TITLE 17 LORAIN COUNTY, OHIO  
Reproduced by Allied Microfilm Corp. Akron, Ohio

ELYRIA TWP.

SHEFFIELD VILLAGE PAGES 1 & 11



ELYRIA TOWNSHIP

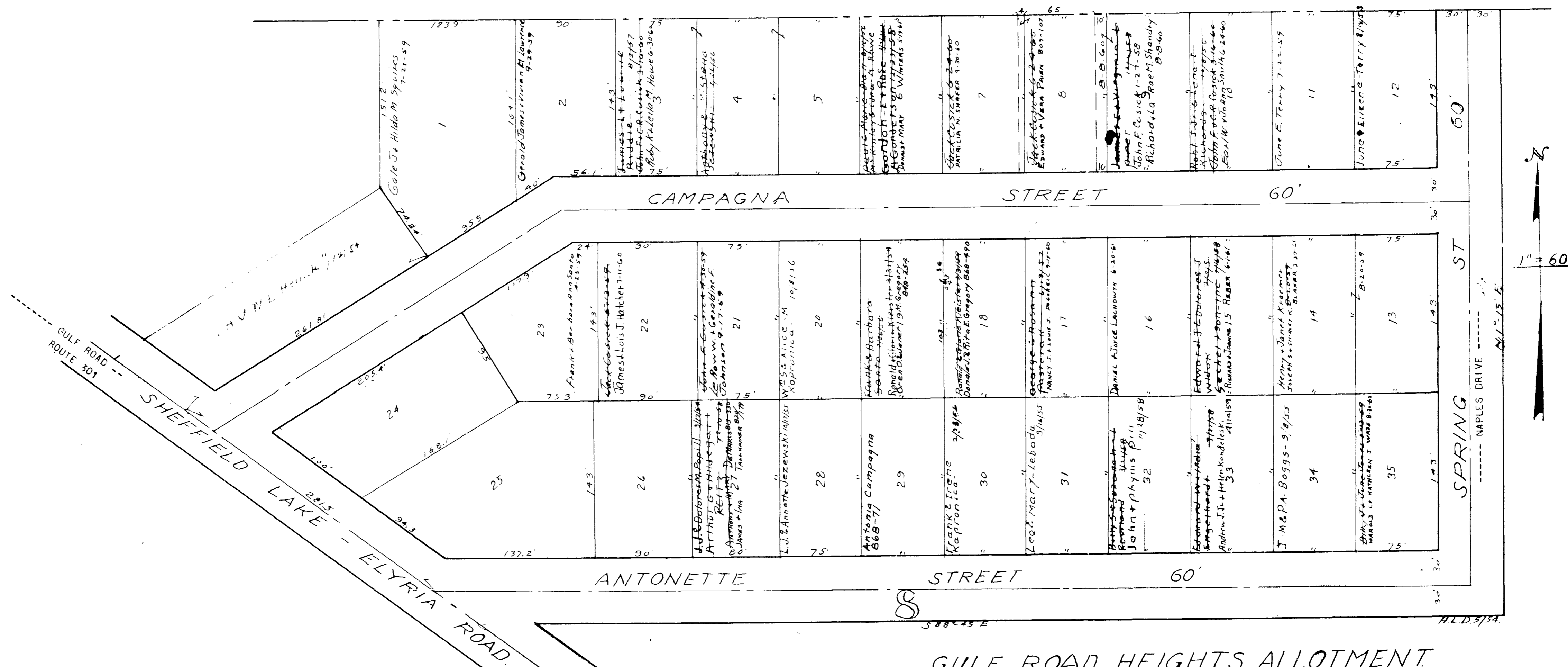
COPYRIGHT 1962  
 U.S. CODE, TITLE 17  
 LORAIN COUNTY, OHIO

Reproduced by,  
 Allied Microfilm Corp.  
 Akron, Ohio

ELYRIA TOWNSHIP

COPYRIGHT 1962  
U.S. CODE, TITLE 17  
LORAIN COUNTY, OHIO

Reproduced by,  
Allied Microfilm Corp.  
Akron, Ohio



**GULF ROAD HEIGHTS ALLOTMENT**  
 Note: ANNEXED to CITY OF ELYRIA, OLN<sup>o</sup> 8 BURRELL & DAY TRACT.  
 1959.  
 ELYRIA TOWNSHIP Vol. 16 Pg. 23  
 Lots in Blank: Michael Campagna, Antonina Campagna.  
 Scale: 1" = 60'