

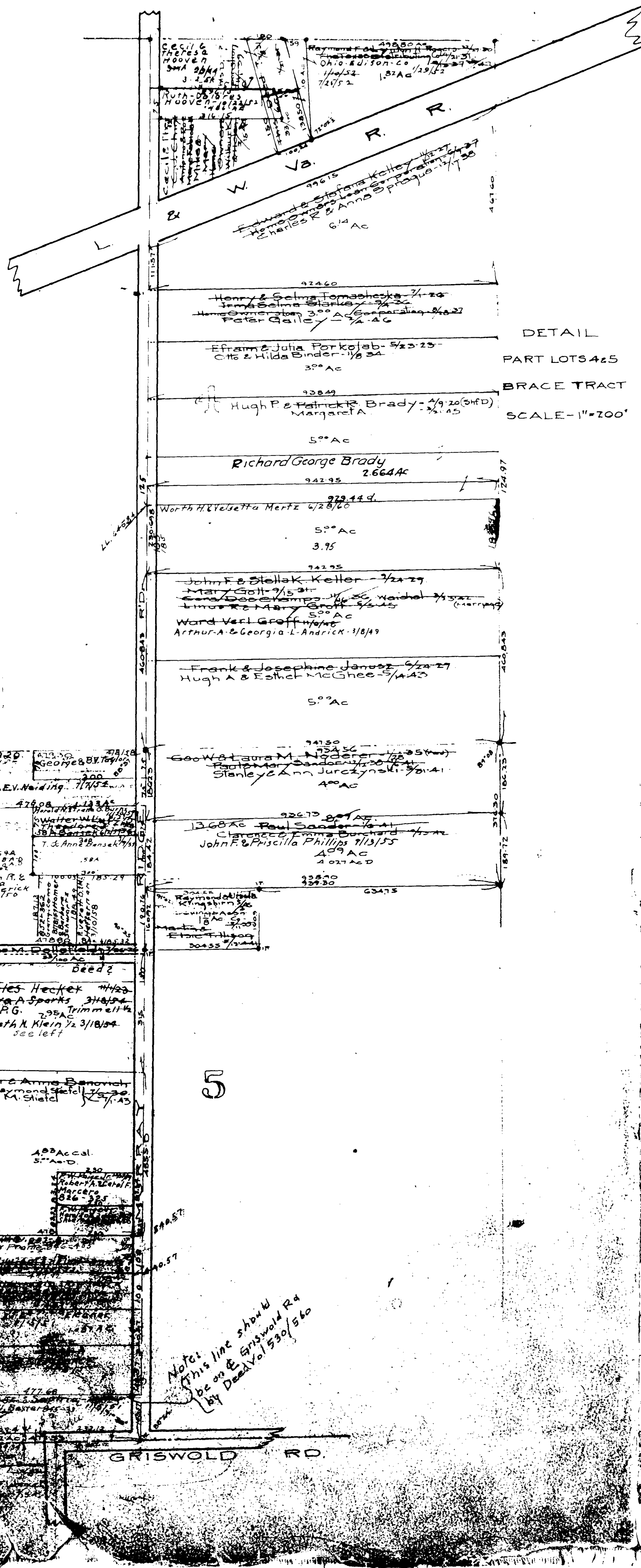


16

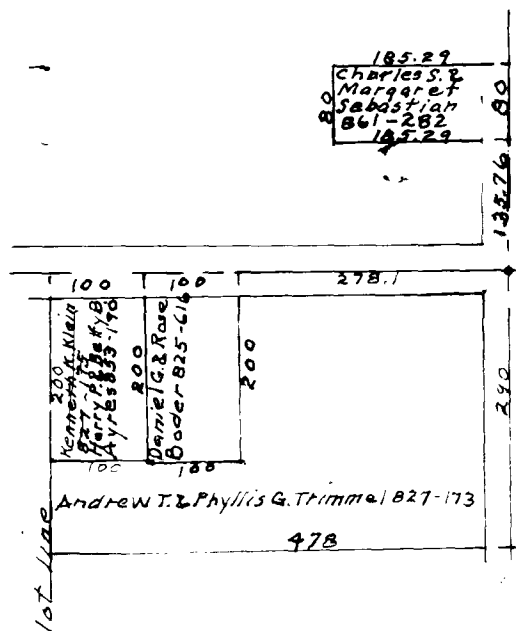
6

8

49



DETAIL
PART LOTS 4 & 5
BRACE TRACT
SCALE - 1" = 200'



ELYRIA TOWNSHIP

COPYRIGHT 1962
U.S. CODE, TITLE 17
LORAIN COUNTY, OHIO

Reproduced by,
Allied Microfilm Corp.
Akron, Ohio

ELYRIA TOWNSHIP

COPYRIGHT 1962
U.S. CODE, TITLE 17
LORAIN COUNTY, OHIO
Reproduced by,
Allied Microfilm Corp.
Akron, Ohio



Superior Subn Vol Pg
Lots in blank - Louis Watson
& Harry
Lots in blank from - 1222 both inclusive
1222-1223
1224-1225
1226-1227
1228-1229



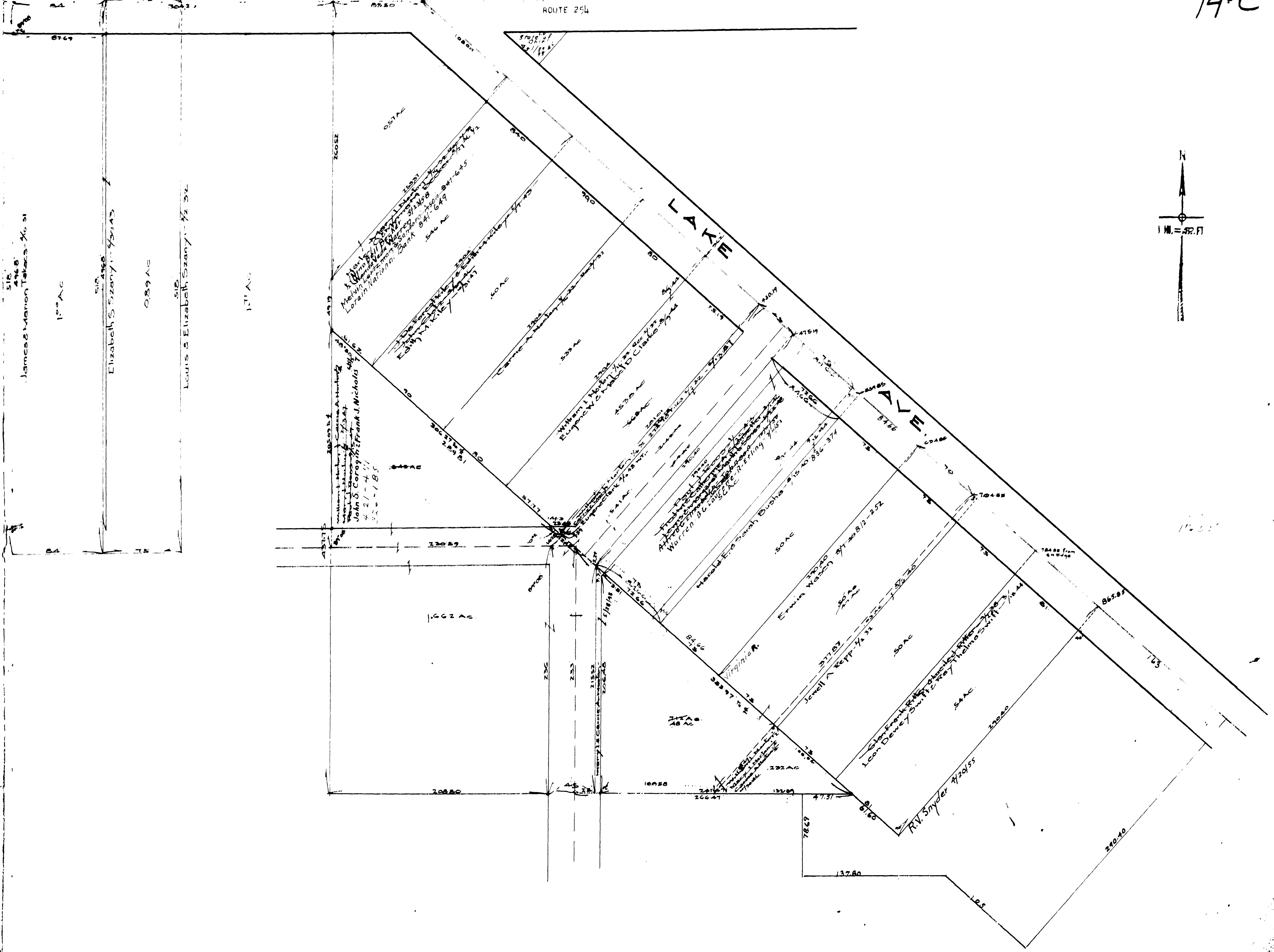
ELYRIA TOWNSHIP

COPYRIGHT 1962
 U.S. CODE, TITLE 17
 LORAIN COUNTY, OHIO
 Reproduced by,
 Allied Microfilm Corp.
 Akron, Ohio

NORTH RIDGE ROAD

14-C

ROUTE 254



ELYRIA TOWNSHIP

COPYRIGHT 1962
 U.S. CODE, TITLE 17
 LORAIN COUNTY, OHIO
 Reproduced by,
 Allied Microfilm Corp.
 Akron, Ohio

