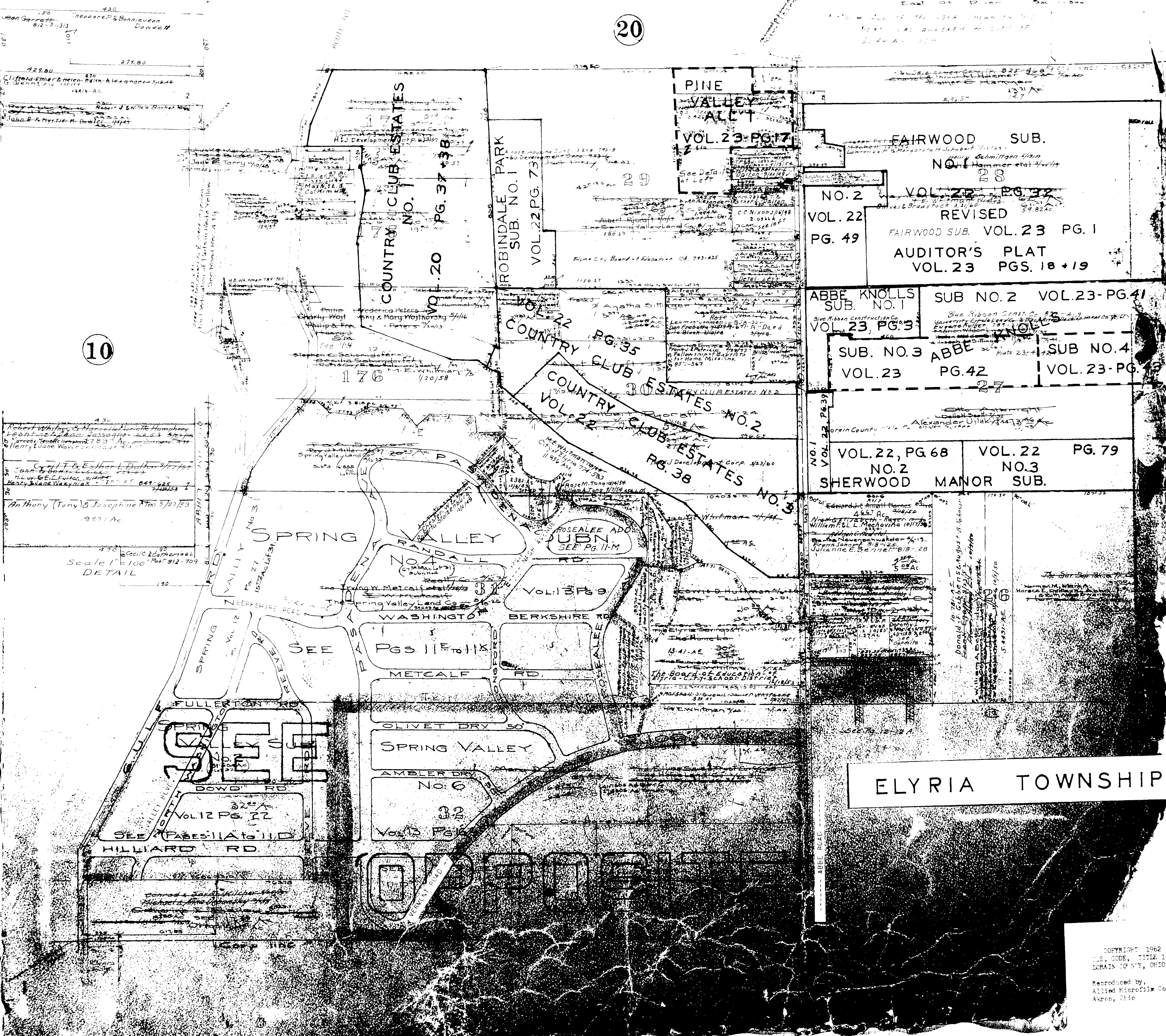


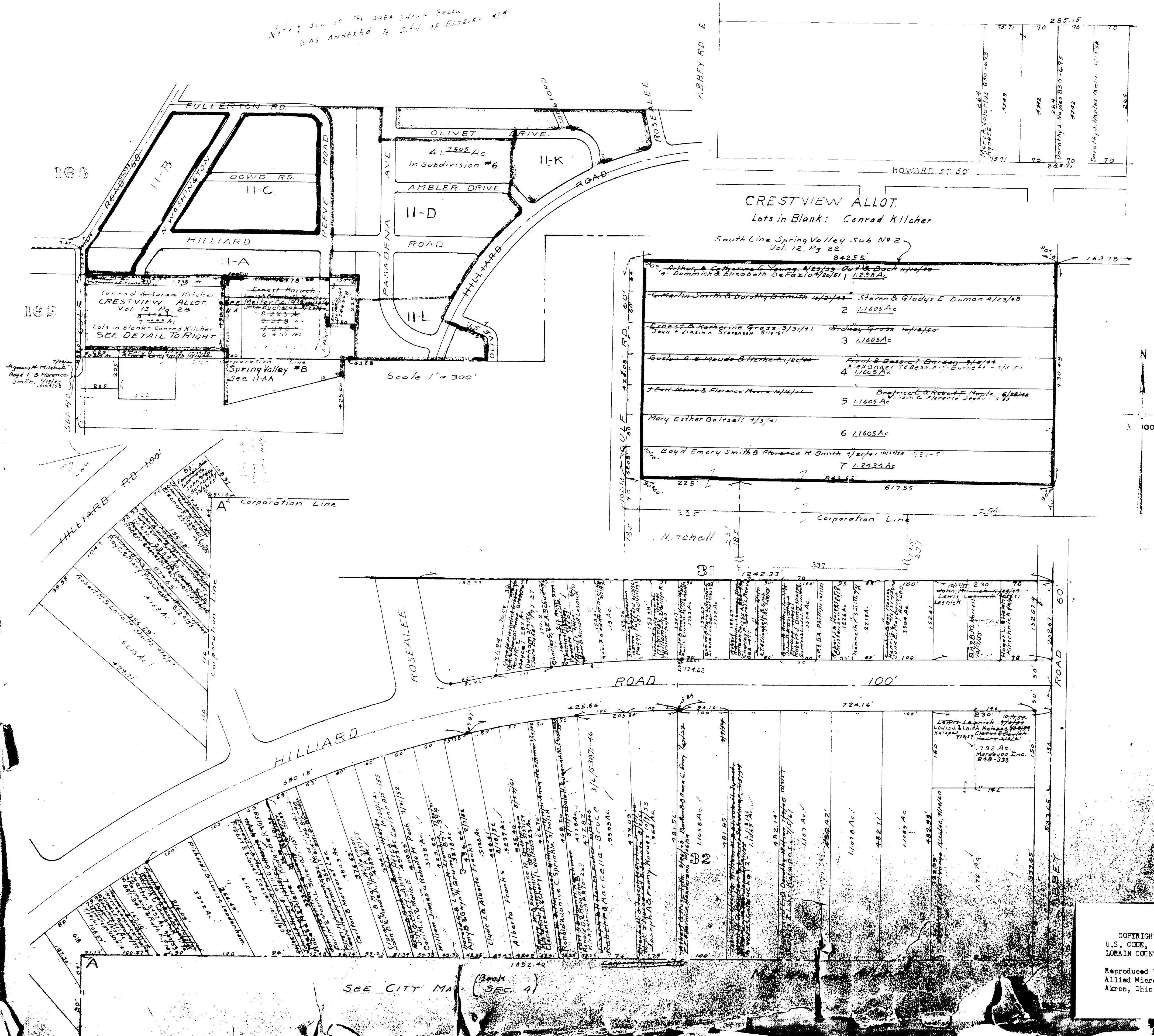
20

10



ELYRIA TOWNSHIP

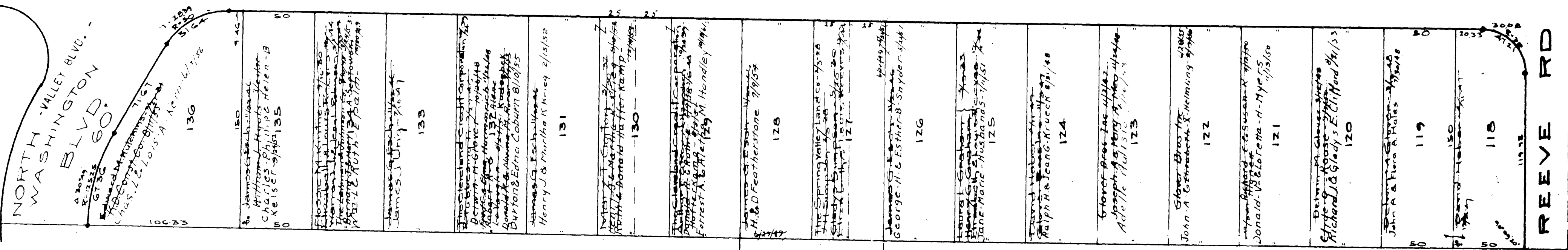
ALL OF THE AREA SHOWN BELOW
WAS ANNEXED TO CITY OF ELYRIA - 1959



COPYRIGHT 1962
U.S. CODE, TITLE 17
LORAIN COUNTY, OHIO

Reproduced by,
Allied Microfilm Corp.
Akron, Ohio

HILLIARD 32 RD 100'



430 Robert Henry Federal & Helene Federal
 Harry & Helene Federal 1/15/27
 The Reuter Co. 10/28/65

08846
 430

Spring Valley Plat 12 22 Ely Twp
 1/15/27

ELYRIA TOWNSHIP

COPYRIGHT 1962
 U.S. CODE, TITLE 17
 LORAIN COUNTY, OHIO
 Reproduced by,
 Allied Microfilm Corp.
 Akron, Ohio

SPRING VALLEY SUB. NO. 8
 ELYRIA TWP. & ELYRIA CITY
 Vol. 18 Pg. 28 Lots in Blank: Meister Co.

11-AA

Spring Valley No. 2



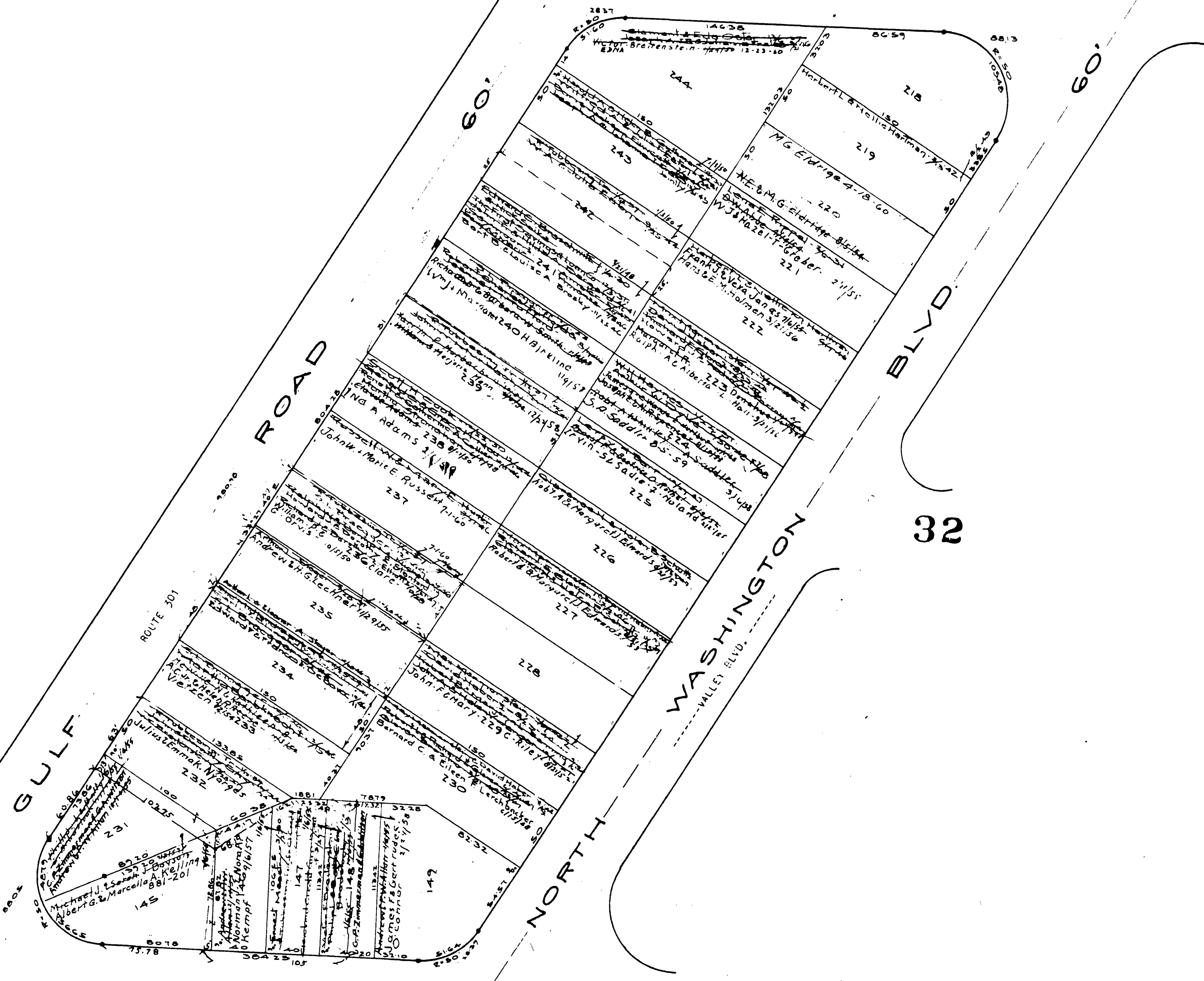
ELYRIA TOWNSHIP

COPYRIGHT 1962
 U.S. CODE, TITLE 17
 LOREIN COUNTY, OHIO
 Reproduced by,
 Allied Microfilm Corp.
 Akron, Ohio

Spring Valley Subn No 2 Vol. 12 Pg 22
Lots in blank: The Spring Valley Land Co
The Spring Valley Land Co
The Spring Valley Land Co
The Spring Valley Land Co

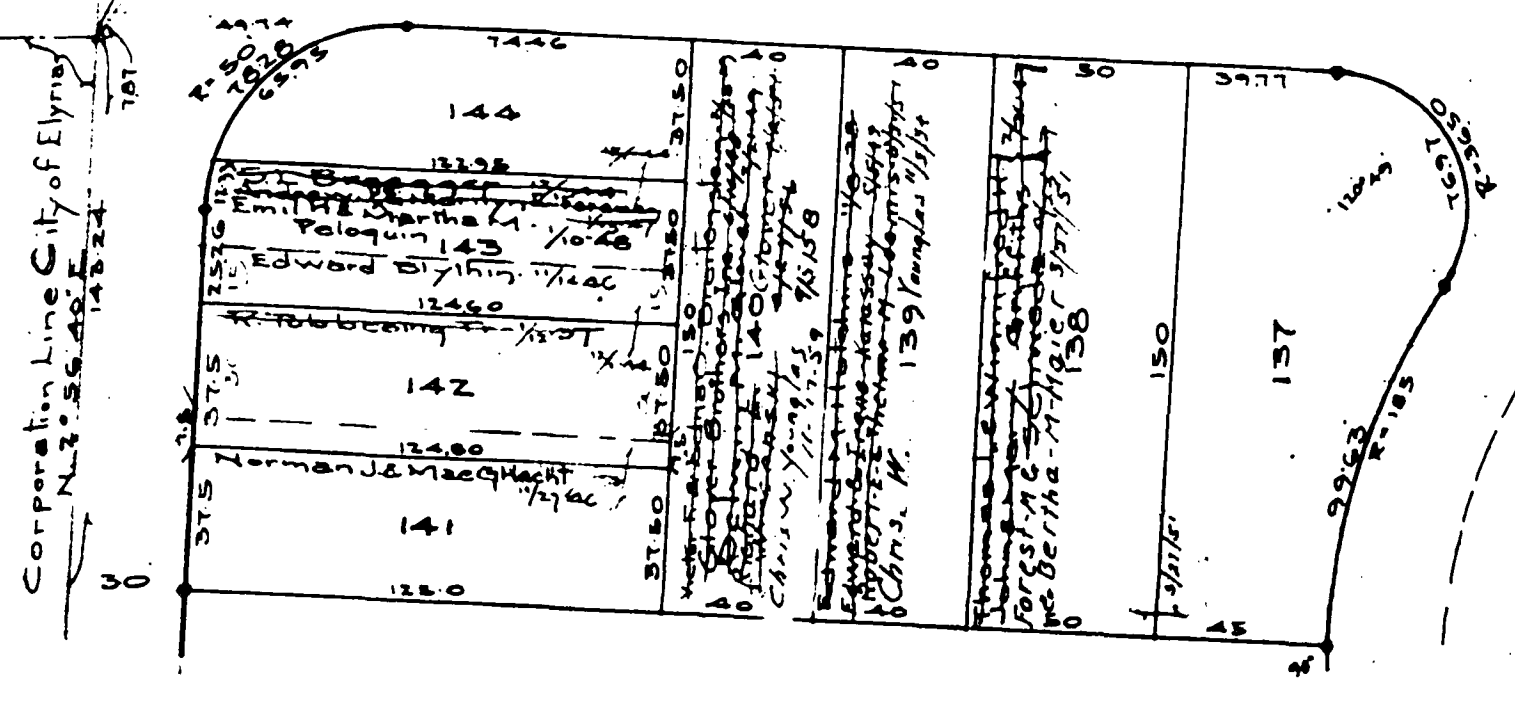
North Line Spring Valley Subn No 2
S 87° 24' E

FULLERTON RD.



32

HILLIARD ROAD 100'

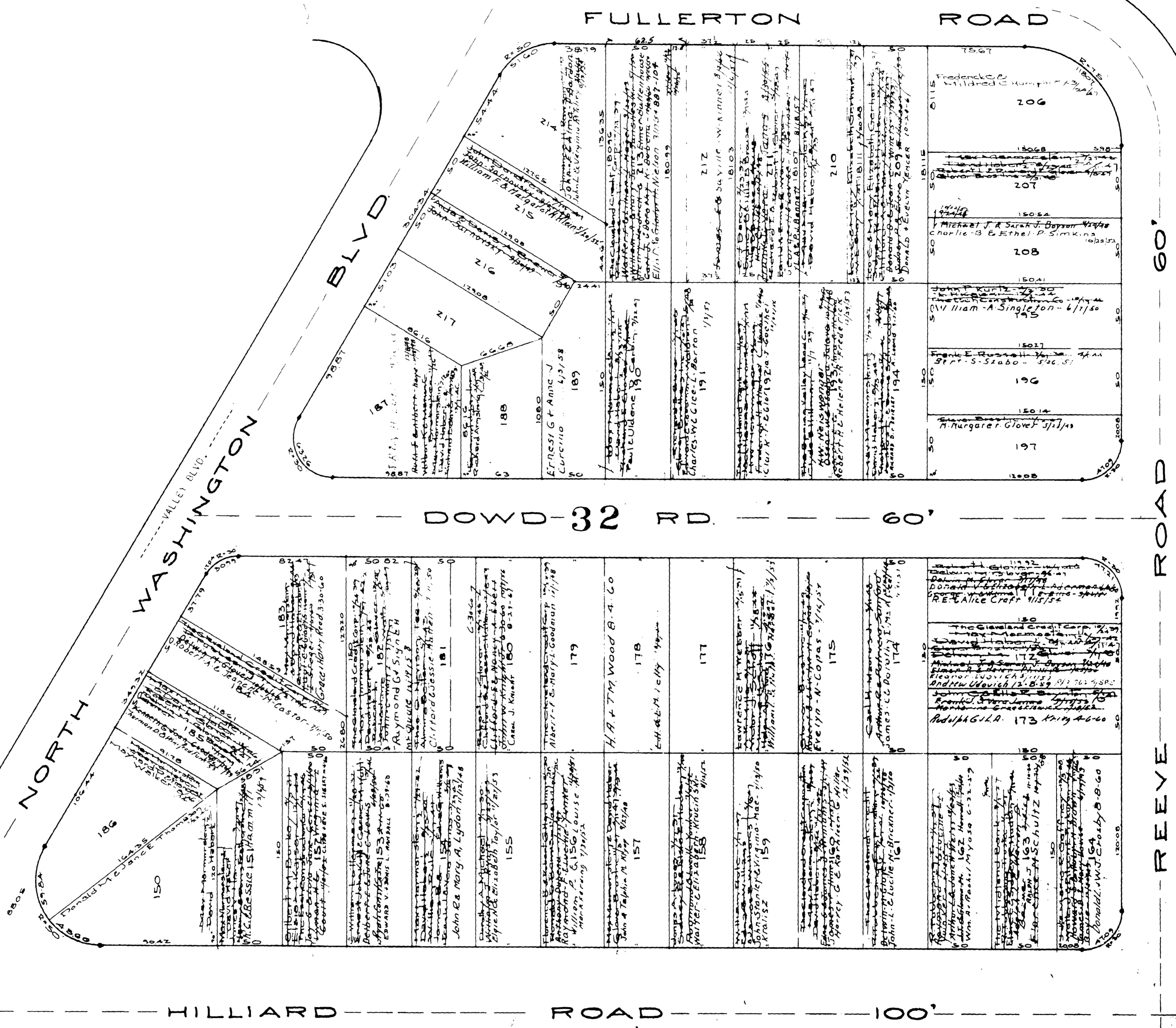


Corporate Line City of Elyria
N. 73° 56' 30" E
143.24

ELYRIA TOWNSHIP

COPYRIGHT 1962
U.S. CODE, TITLE 17
LORAIN COUNTY, OHIO
Reproduced by,
Allied Microfilm Corp.
Akron, Ohio

Spring Valley Subn No 2 Vol 12 Pg 22
Lots in blank: The Spring Valley Land Co
The Spring Valley Land Co
Max Marmorstein 1914



11-D

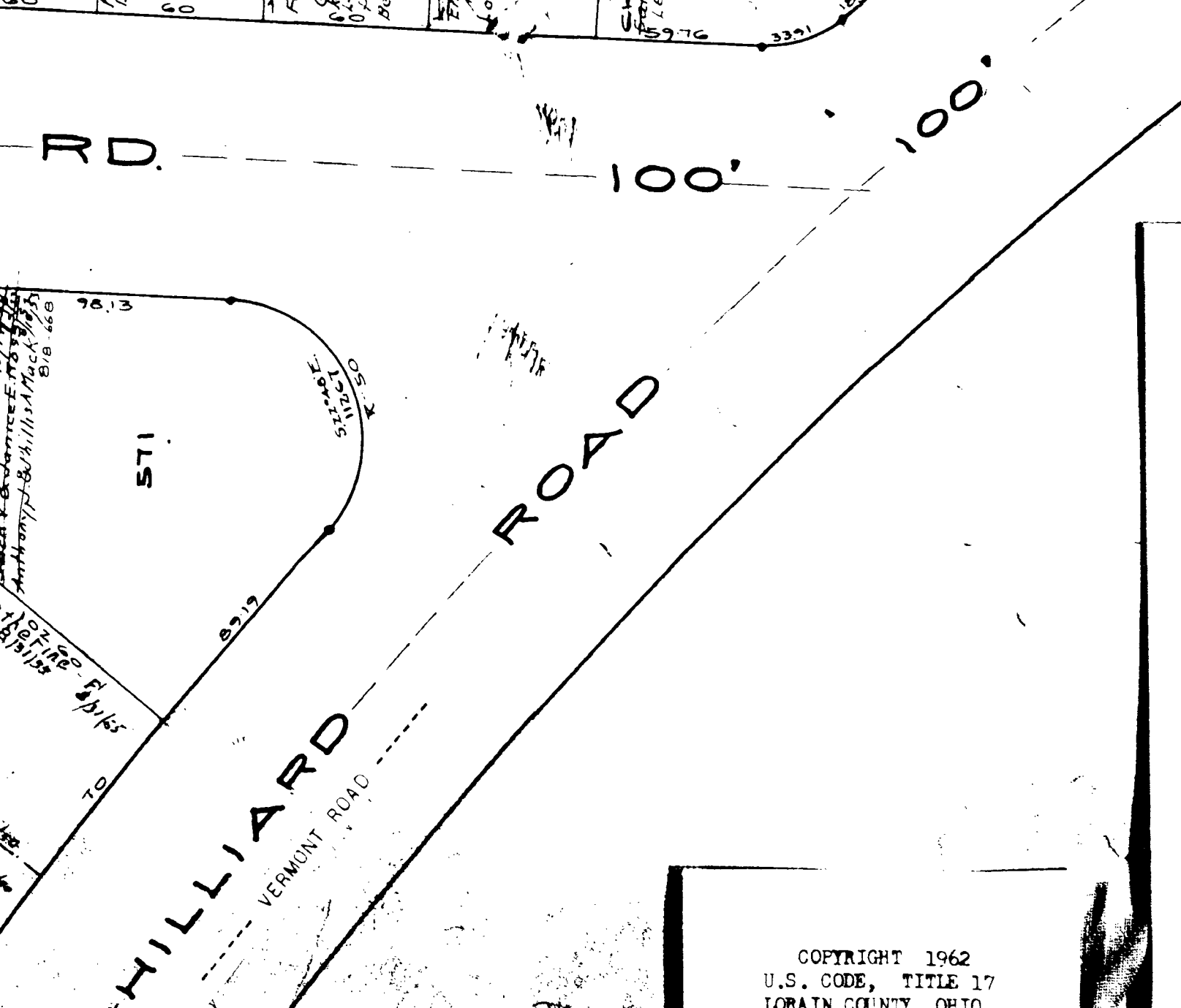
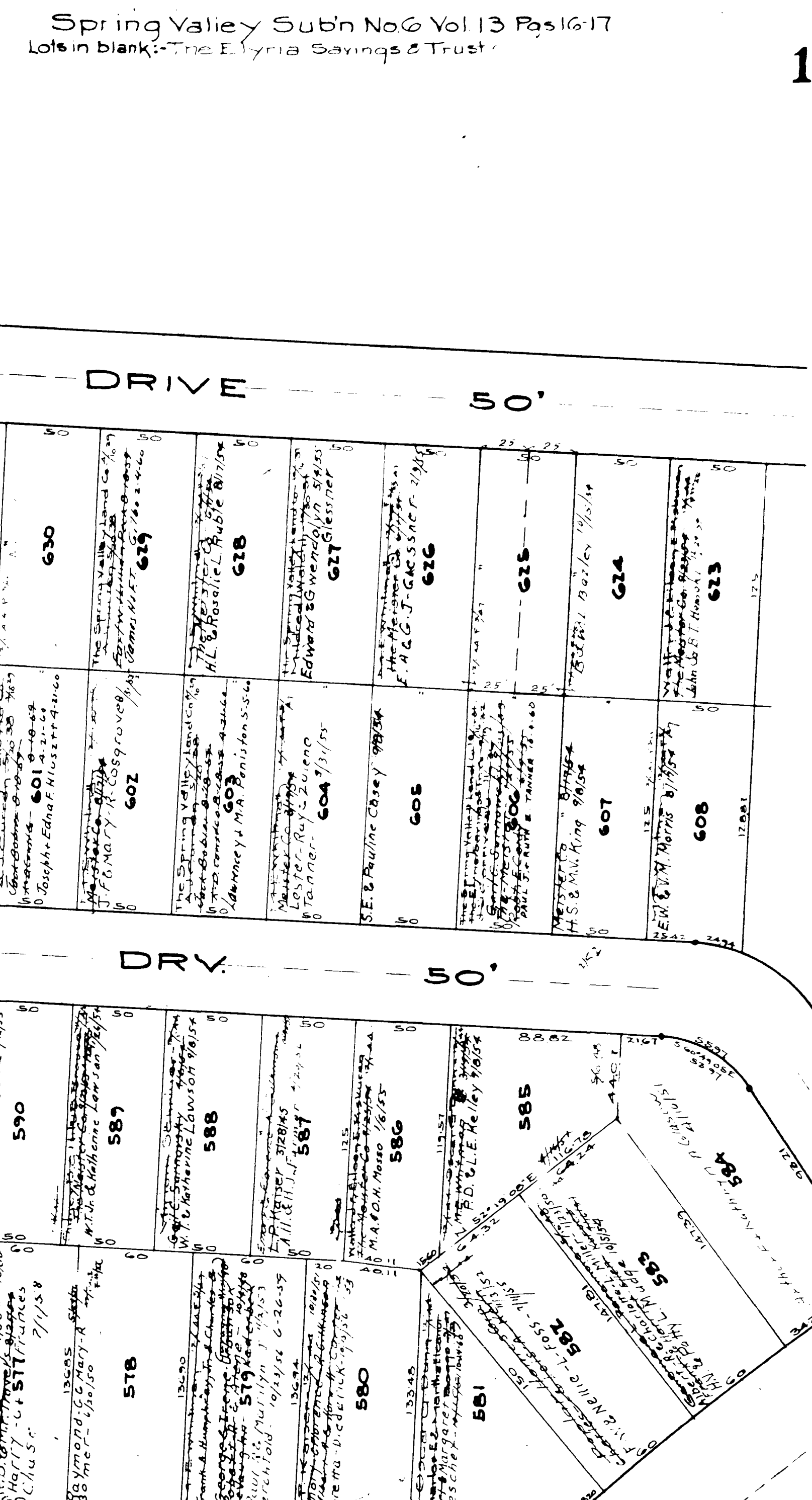
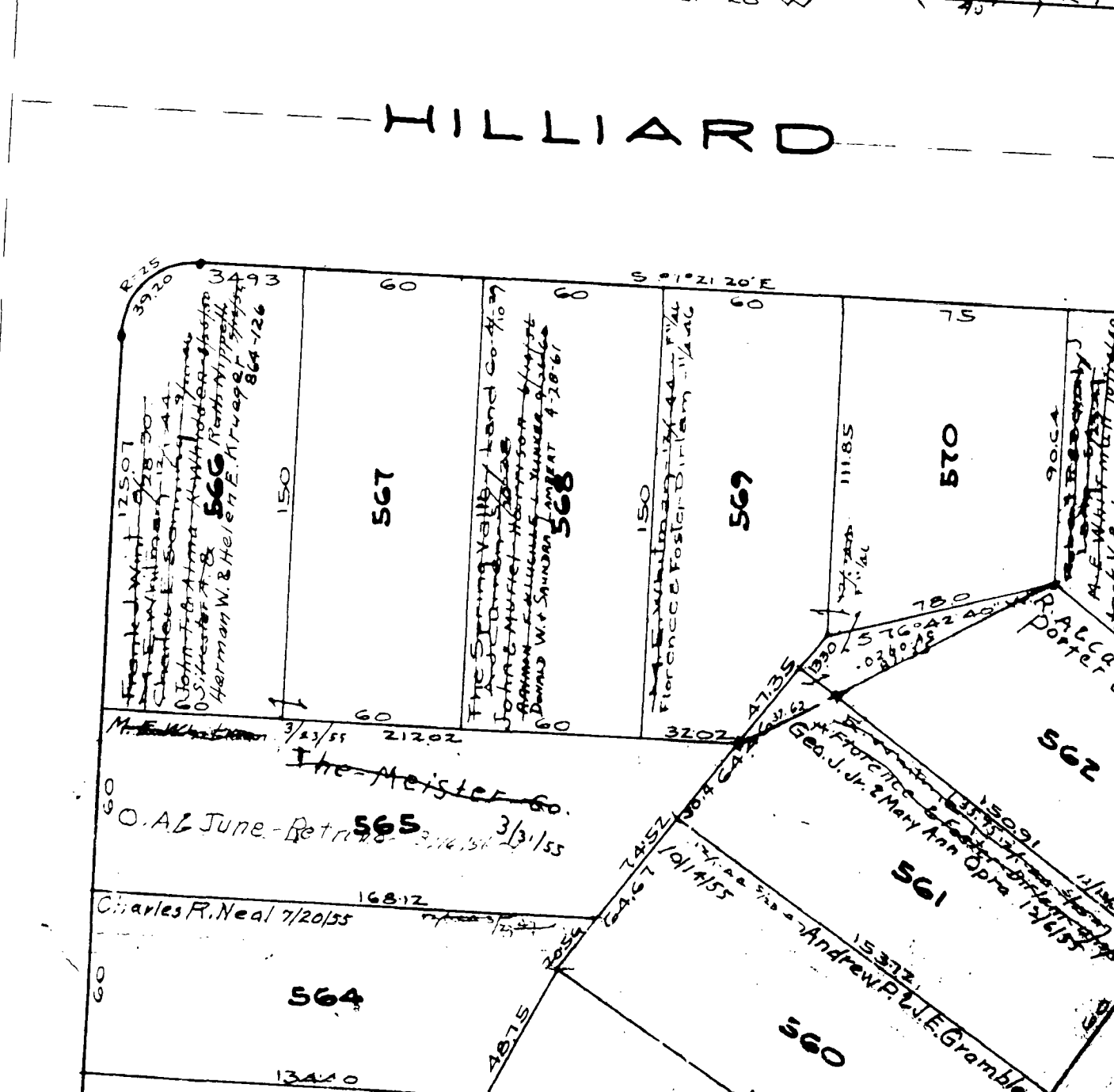
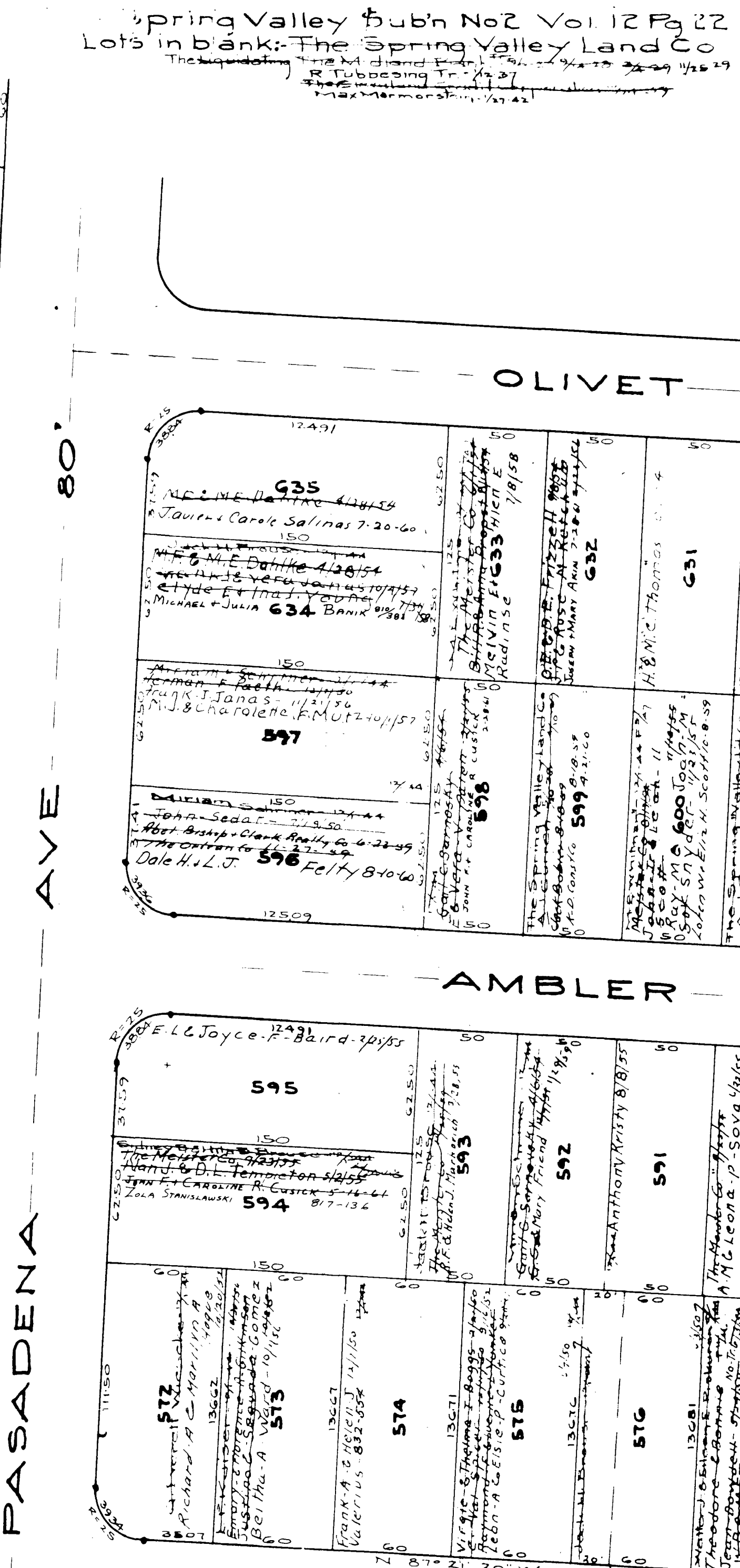
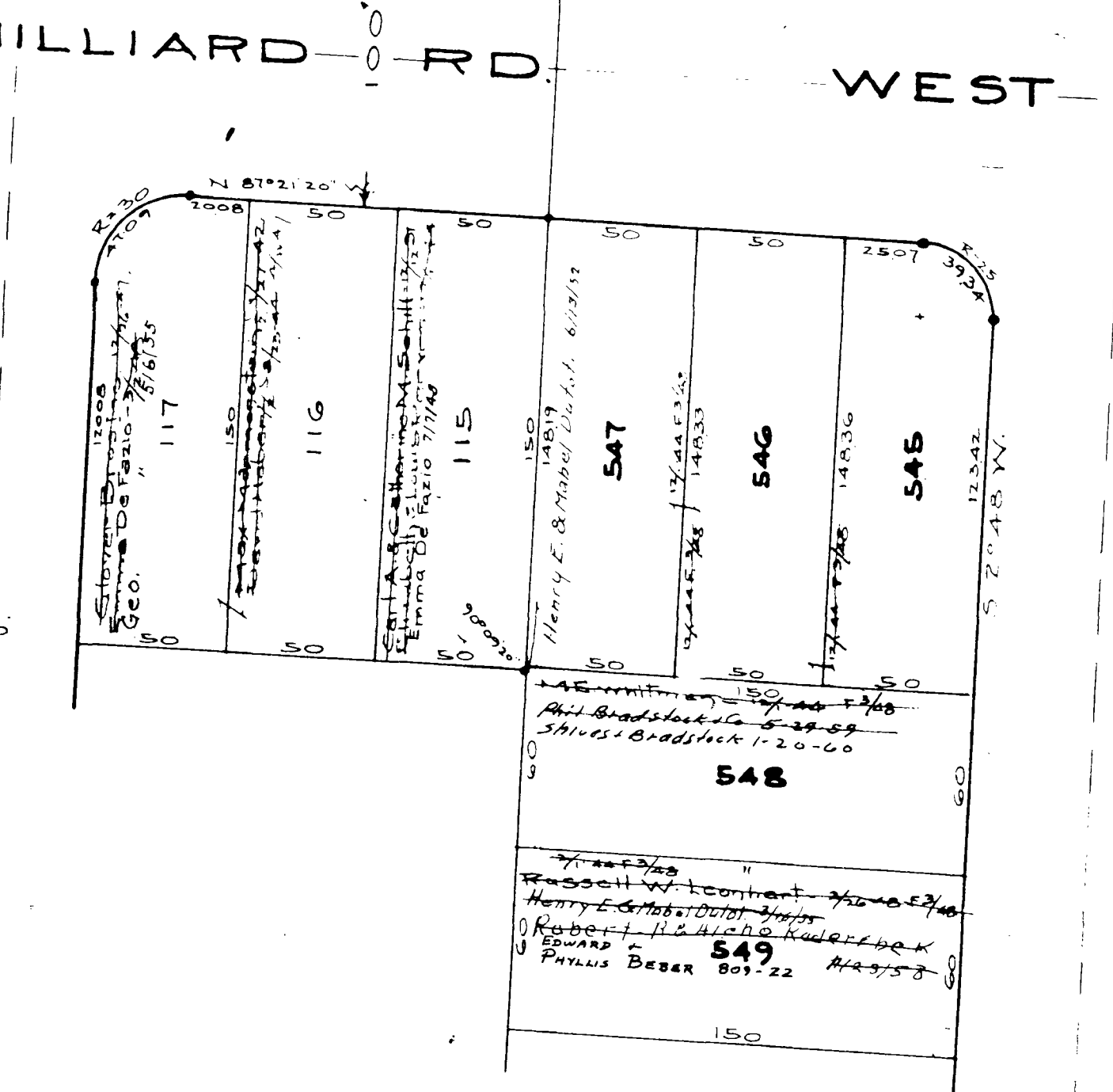
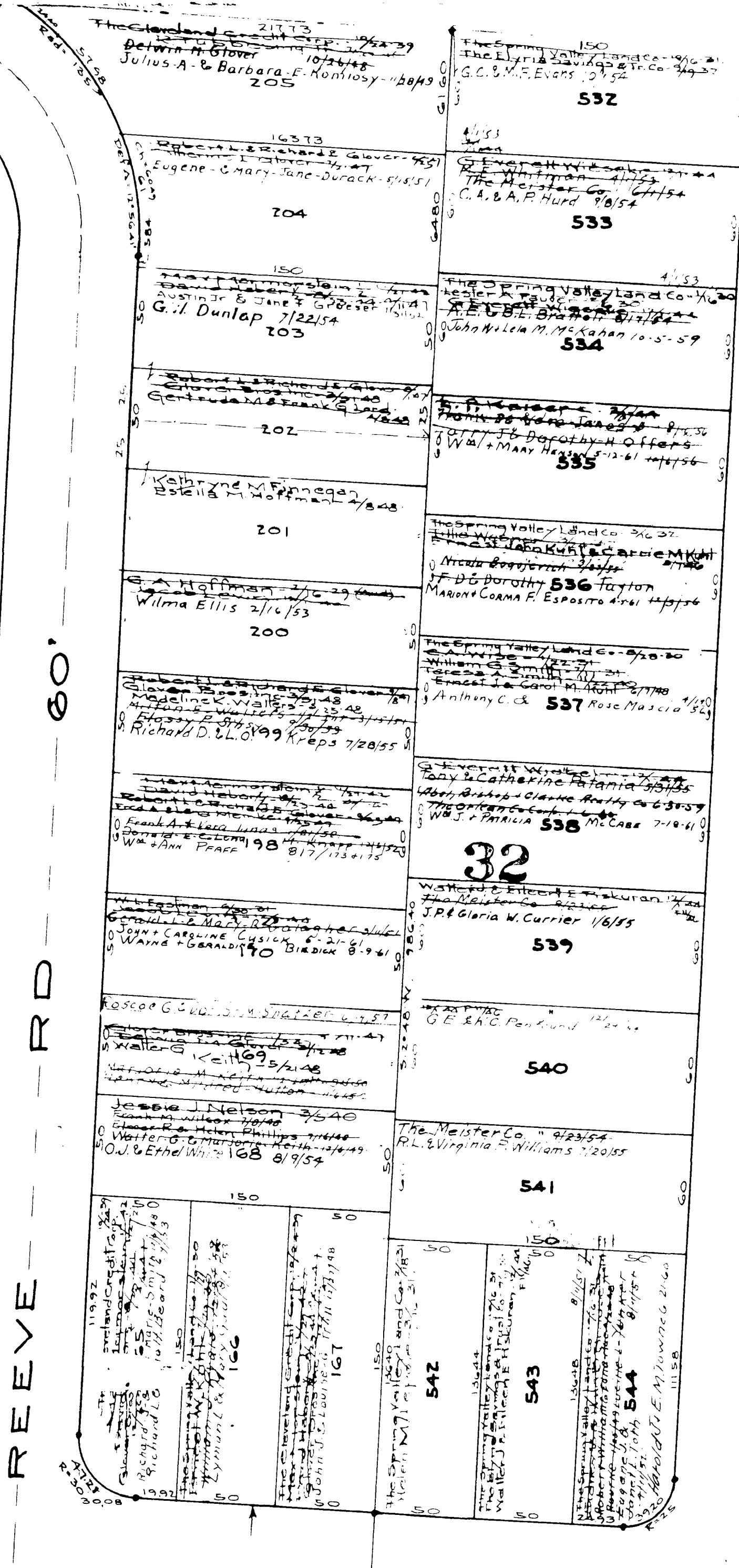
11-D

COPYRIGHT 1962
U.S. CODE, TITLE 17
LORAIN COUNTY, OHIO
Reproduced by,
Allied Microfilm Corp.
Akron, Ohio

ELYRIA TOWNSHIP

Spring Valley No. 6
531-549-11D
550-559-11L
560-608-11K

Spring Valley No. 6
609-622-11K
623-635-11D
636-660-11K



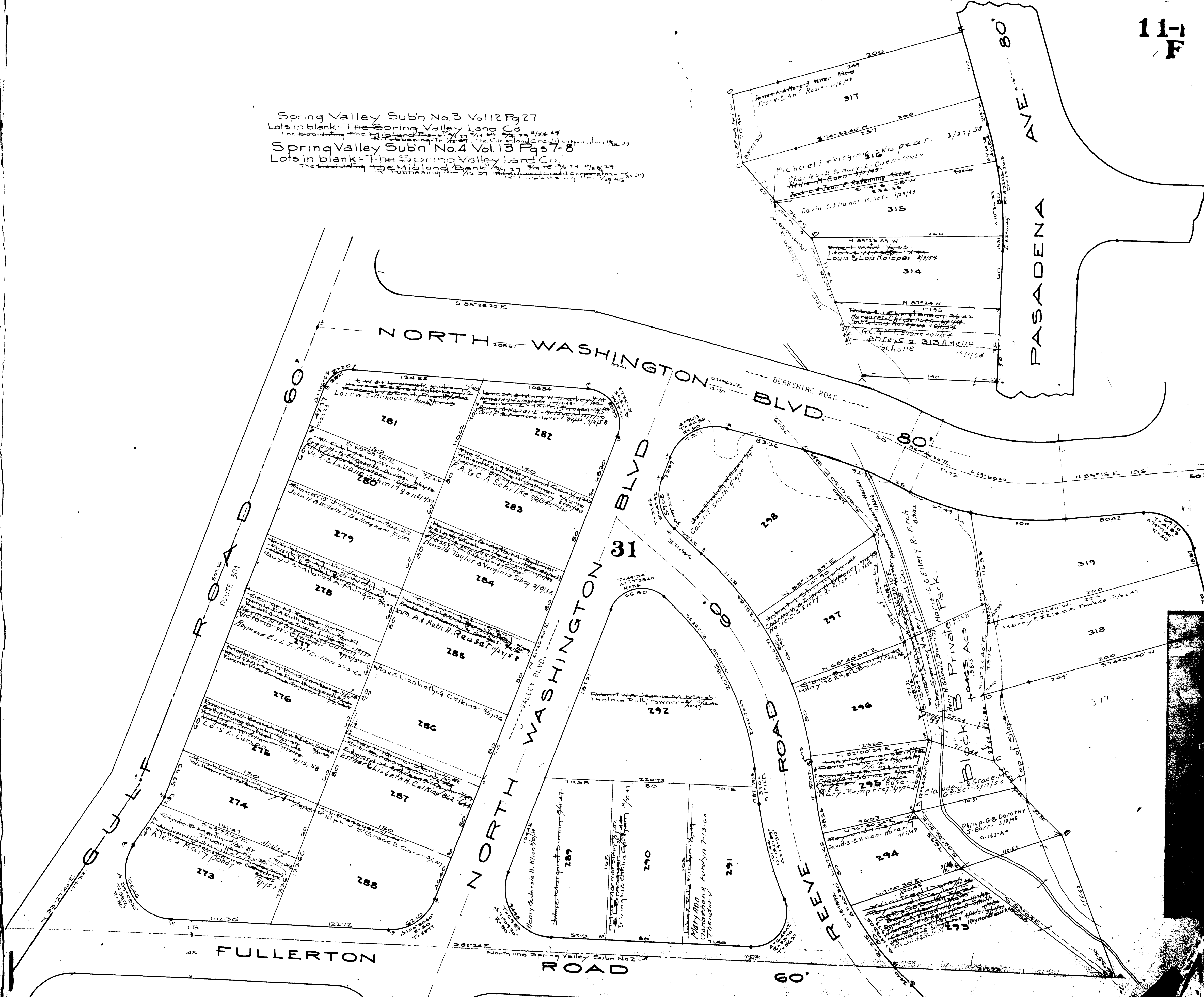
COPYRIGHT 1962
U.S. CODE, TITLE 17
LORAIN COUNTY, OHIO
Reproduced by,
Allied Microfilm Corp.
Akron, Ohio

ELYRIA TOWNSHIP

COPYRIGHT 1962
U.S. CODE, TITLE 17
LORAIN COUNTY, OHIO
Reproduced by,
Allied Microfilm Corp.
Akron, Ohio



Spring Valley Subn No.3 Vol.12 Pg.27
Lots in blank: The Spring Valley Land Co.
The Spring Valley Land Co. 7/22/29
The Cleveland Circle City Corporation 12/22/29
Spring Valley Subn No.4 Vol.13 Pgs.7-8
Lots in blank: The Spring Valley Land Co.
The Spring Valley Land Co. 7/22/29
The Midland Bank 7/22/29
R. Tubbing 7/22/29



ELYRIA TOWNSHIP

COPYRIGHT 1962
U.S. CODE, TITLE 17
LORAIN COUNTY, OHIO
Reproduced by,
Allied Microfilm Corp.
Akron, Ohio

Spring Valley Sub'n No 3 Vol 12 Pg 27
Lots in blank: The Spring Valley Land Co.
The Midland Bank 7/27 2438 3/22 11/25/29
The Liquidating Trust 7/27 2438 3/22 11/25/29
The Cleveland Credit Corporation 7/27 2438 3/22 11/25/29

Spring Valley Sub'n No 4 Vol 13 Pg 78
Lots in blank: The Spring Valley Land Co.
The Midland Bank 7/27 2438 3/22 11/25/29
The Liquidating Trust 7/27 2438 3/22 11/25/29
The Cleveland Credit Corporation 7/27 2438 3/22 11/25/29

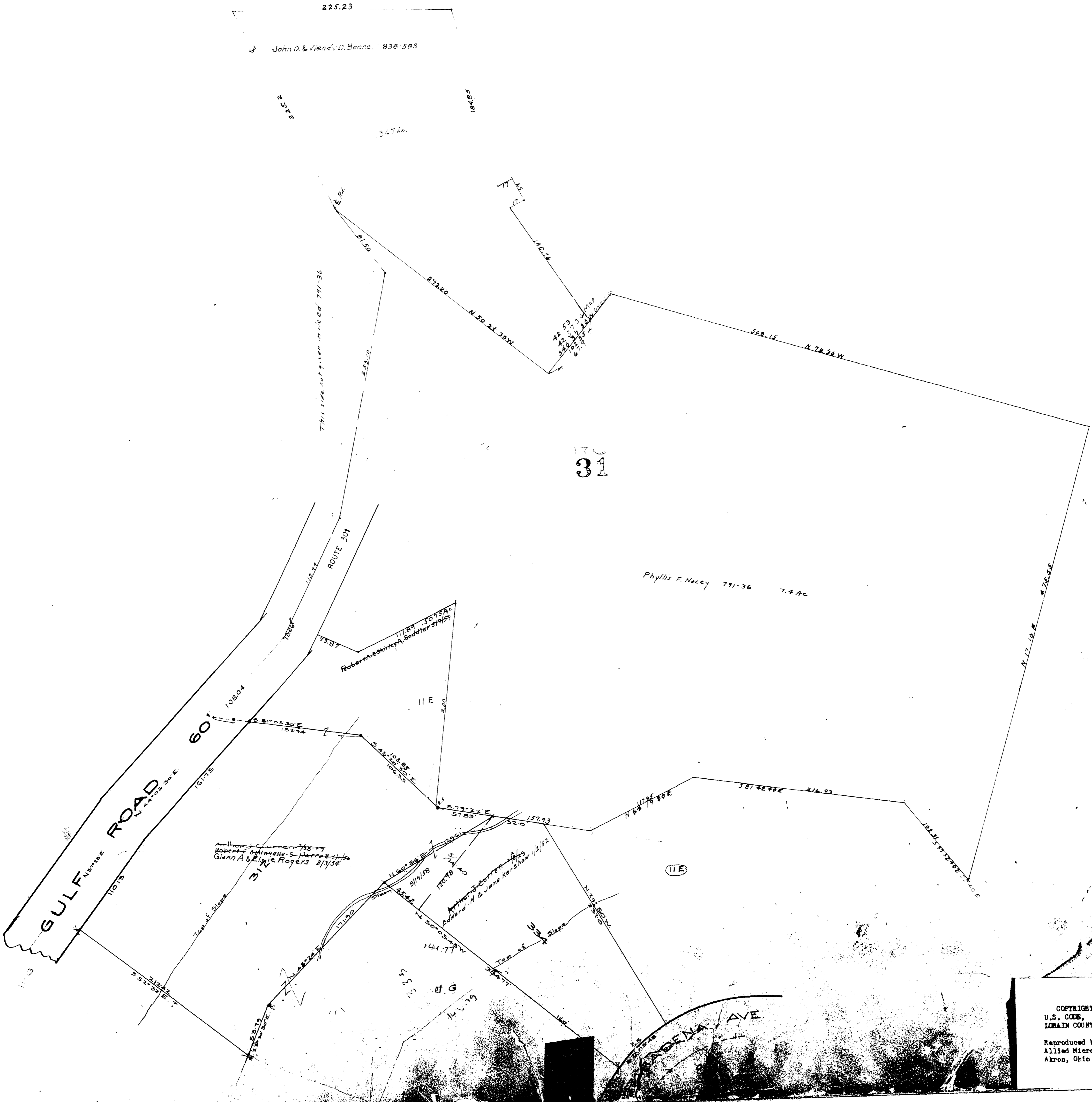
176



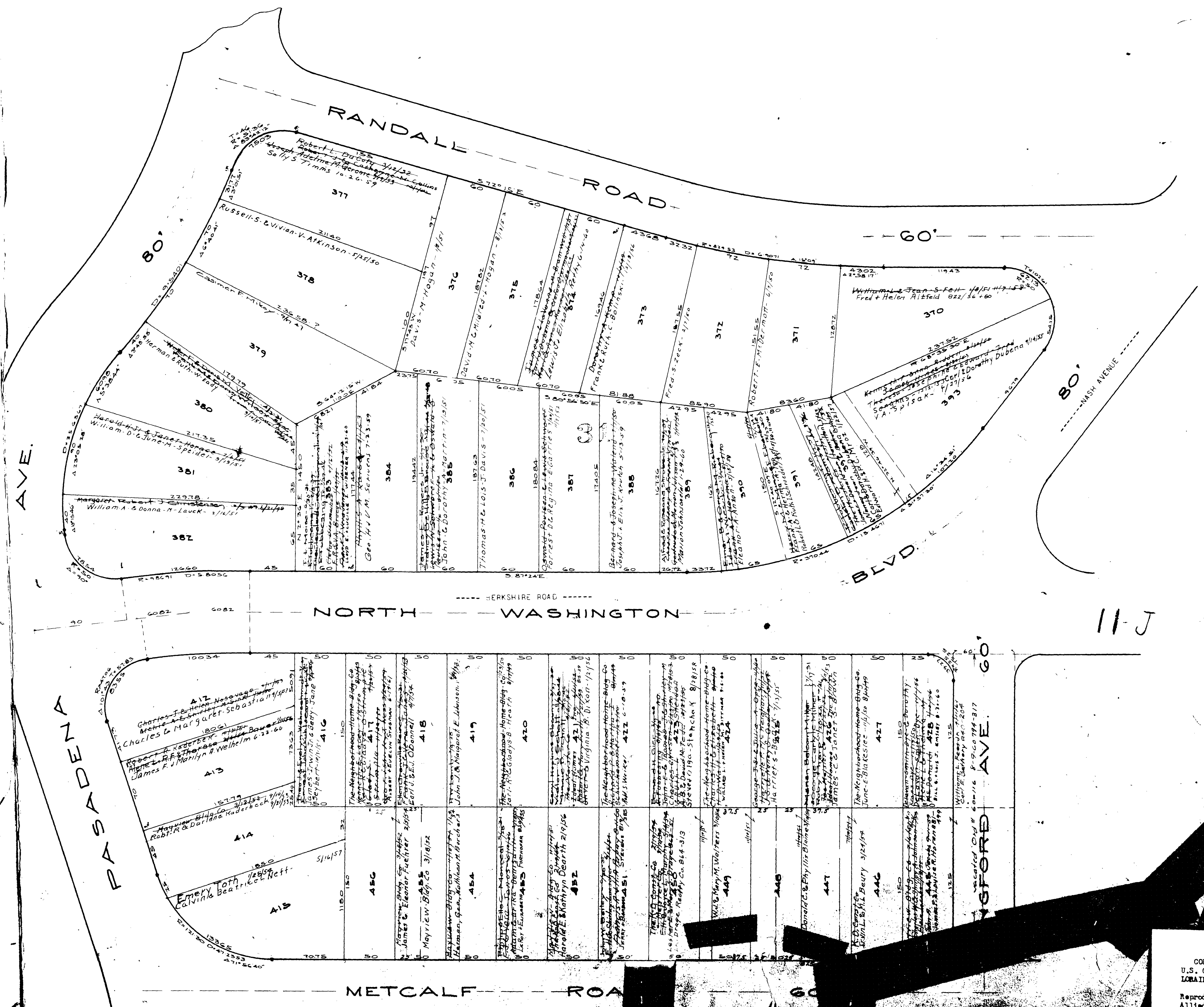
ELYRIA TOWNSHIP

Spring Valley Sub'n No. 4 Vol. 13 Pgs 7-8
Lots in blank: The Spring Valley Land Co.
The Midland Bank 1/27 2/27 3/27 4/27 5/27 6/27 7/27 8/27 9/27 10/27 11/27 12/27
The Midland Bank 1/28 2/28 3/28 4/28 5/28 6/28 7/28 8/28 9/28 10/28 11/28 12/28
The Cleveland Credit Corporation 1/29 2/29 3/29 4/29 5/29 6/29 7/29 8/29 9/29 10/29 11/29 12/29

ELYRIA TOWNSHIP



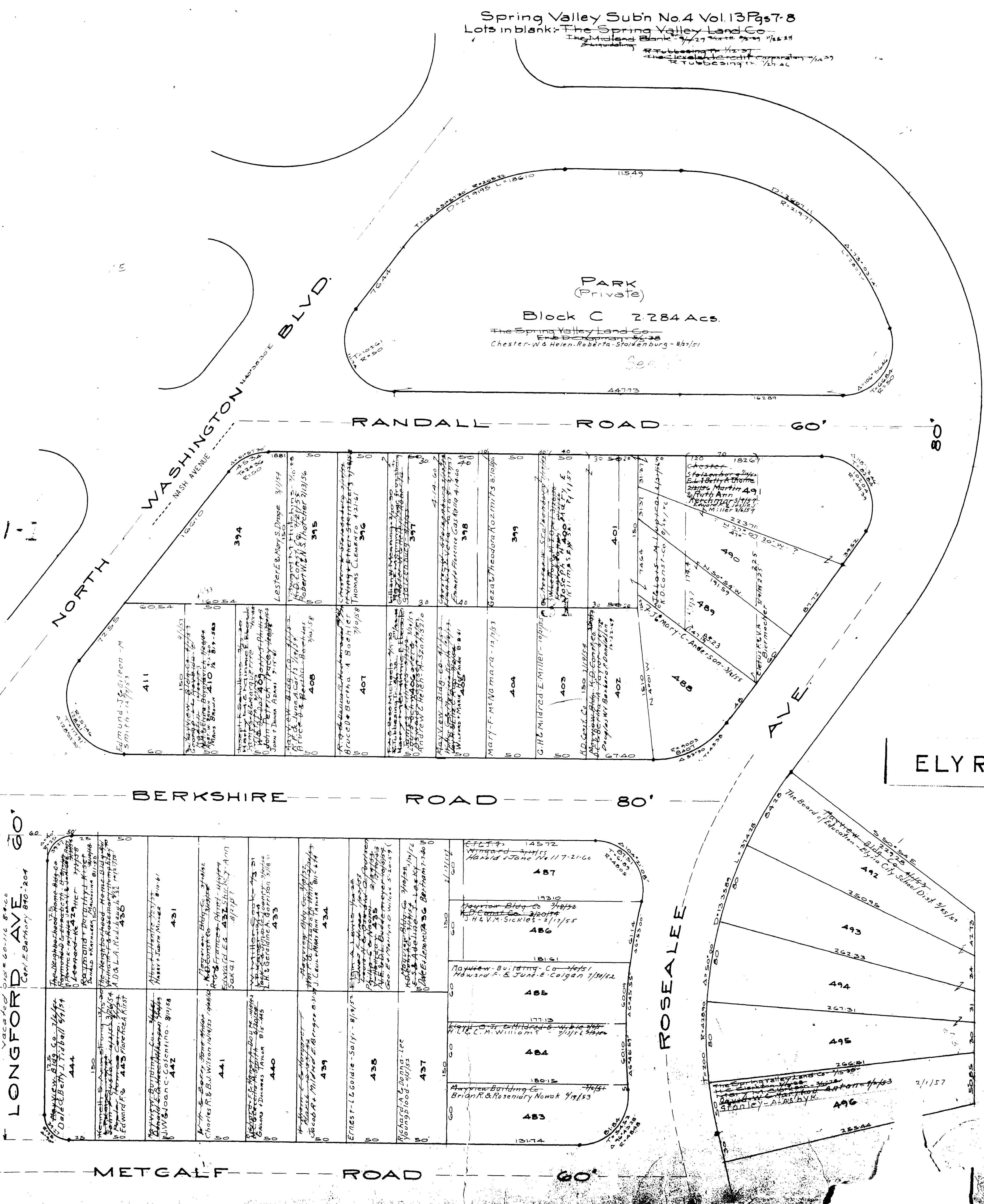
COPYRIGHT 1962
U.S. COGE, TITLE 17
LORAIN COUNTY, OHIO
Reproduced by,
Allied Microfilm Corp.
Akron, Ohio



11-J

ELYRIA TOWNSHIP

Spring Valley Subn No.4 Vol.13Pg57-8
 Lots in blank-The Spring Valley Land Co.
 The Midland Bank 7/27 1927
 Re-subdividing 7/27/27
 The Cleveland Credit Corporation 7/27/27
 Re-subdividing 7/27/27

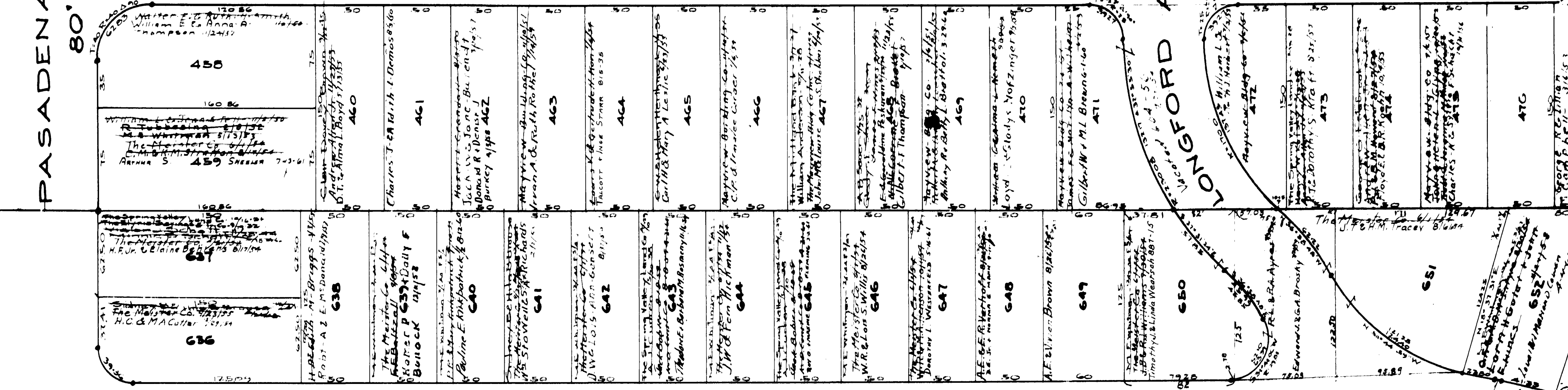


ELYRIA TOWNSHIP

PASADENA AVE. 80'

METCALF ROAD 31 60'

LONGFORD AVE. 60'

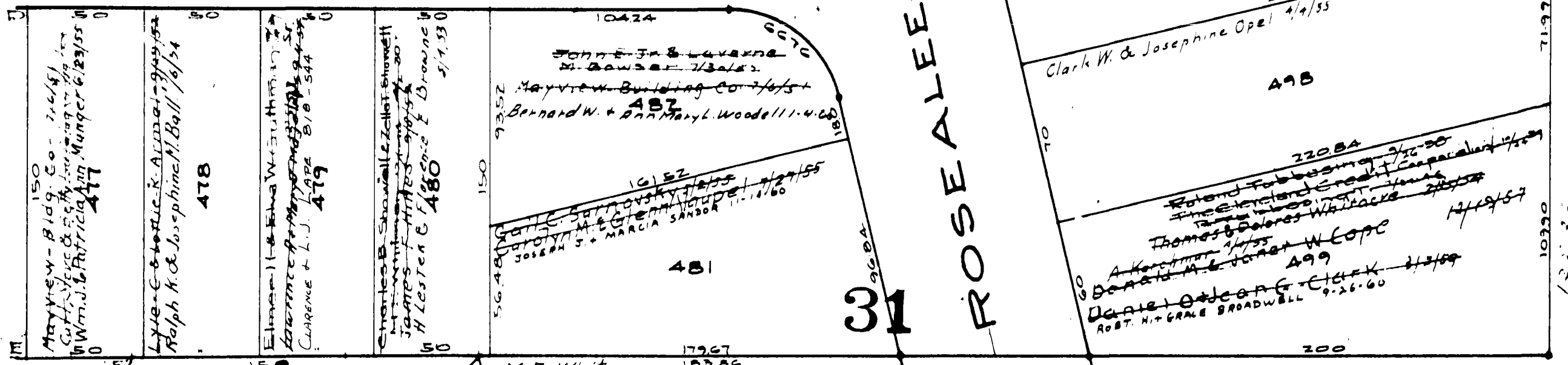


OLIVET DRIVE 50'

32

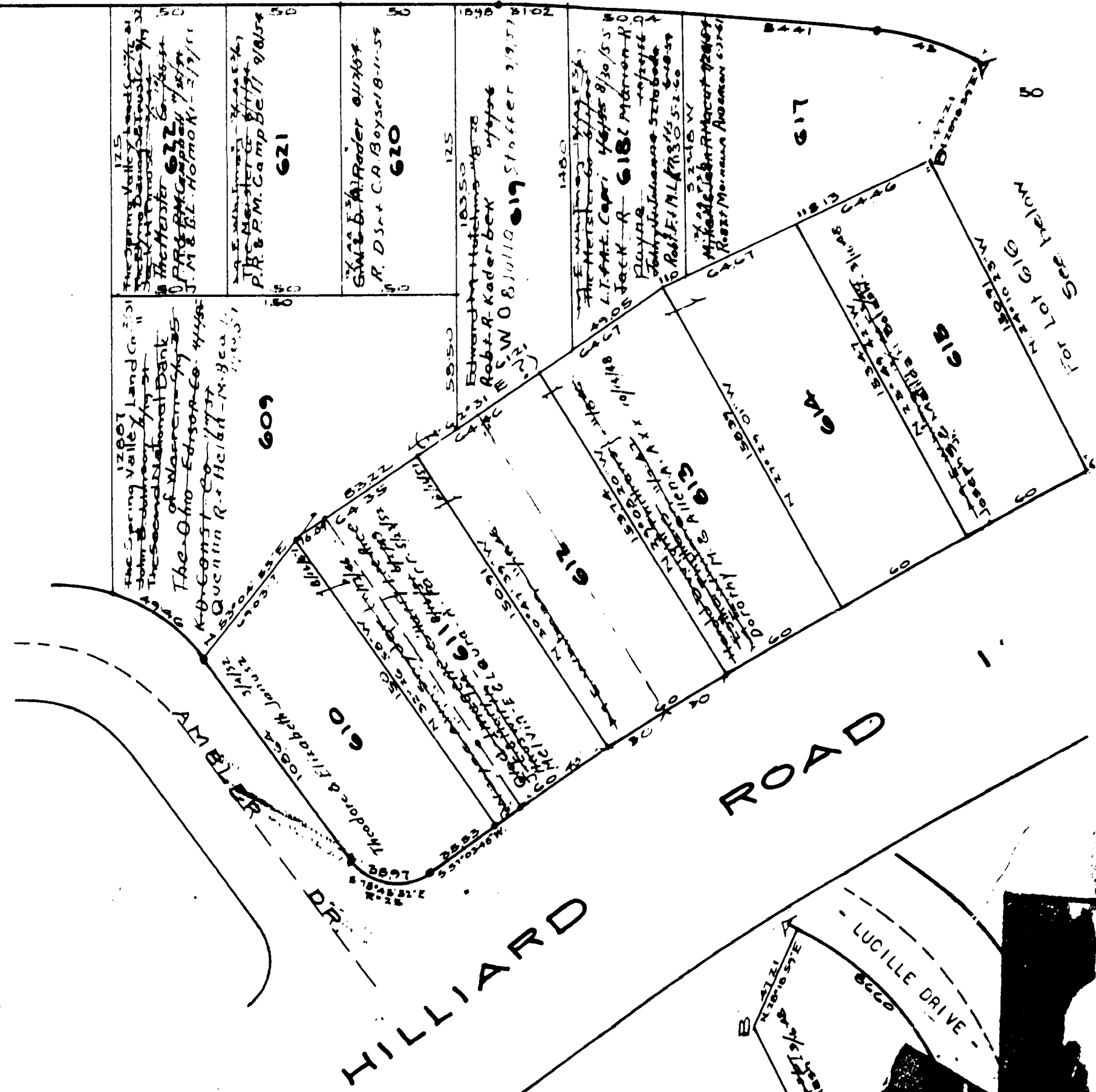
METCALF RD. 60'

ROSEALEE AVE. 31 32



LONGFORD AVE. 60'

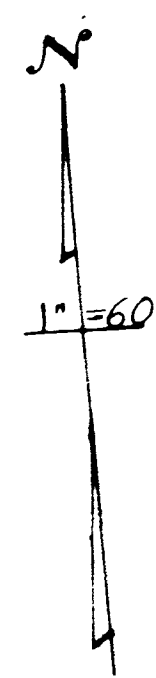
HILLIARD RD. 100'



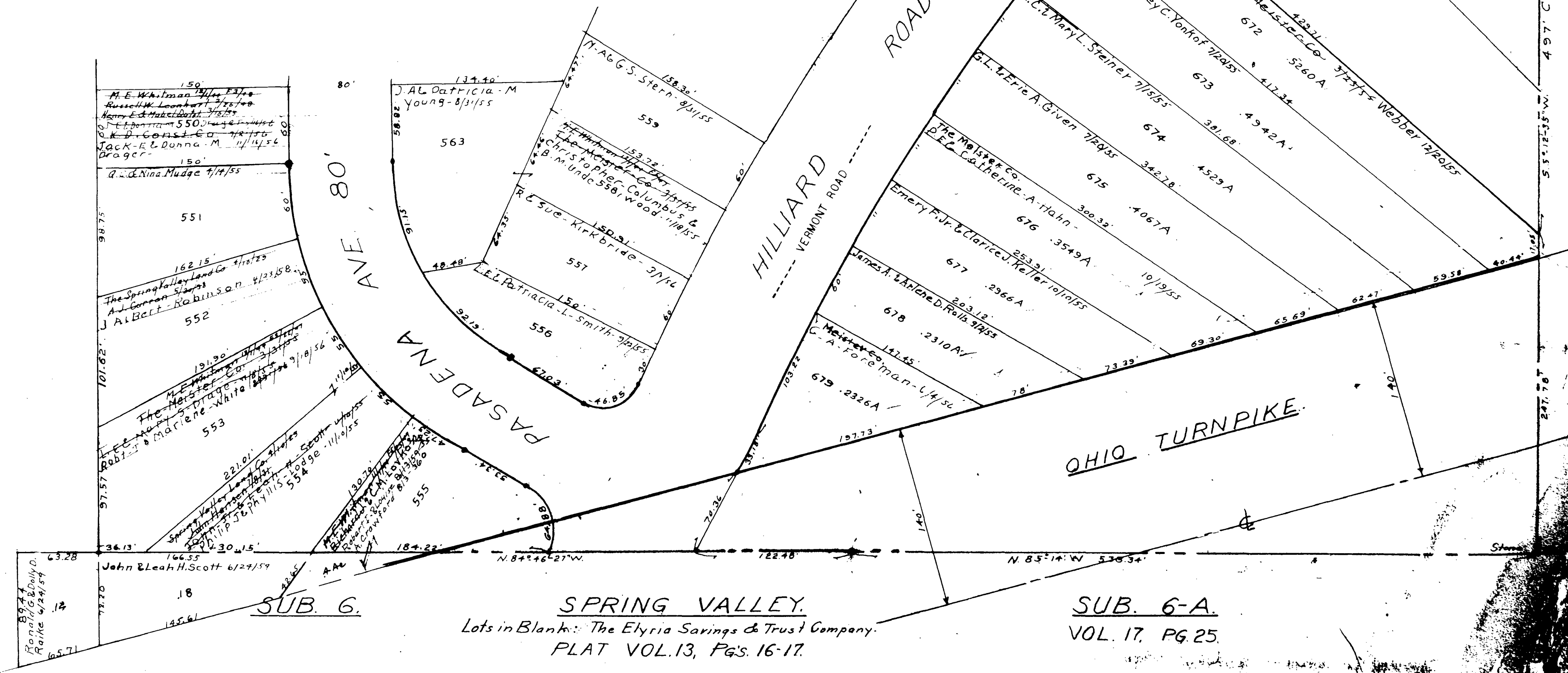
ELYRIA TOWNSHIP

COPYRIGHT 1962
U.S. CODE, TITLE 17
LOHAIN COUNTY, OHIO
Reproduced by,
Allied Microfilm Corp.
Akron, Ohio

ELYRIA TOWNSHIP



32
East of River
FOR THIS PART SEE Pg. 11-D



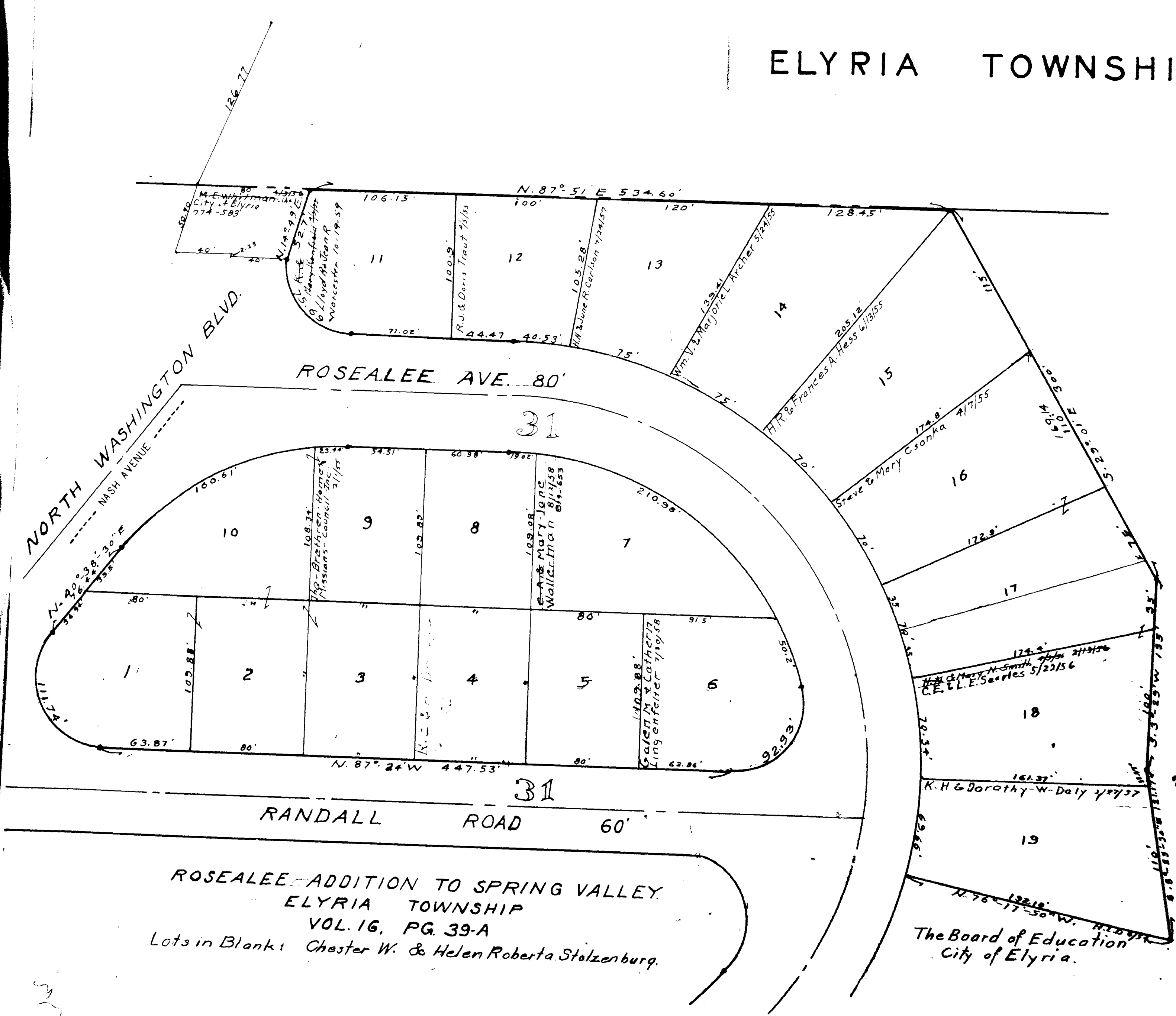
497' CITY OF ELYRIA - Governmental
551' 12.35' W.
566 PAGE 11 FOR NEW COMP. LINE

SPRING VALLEY
Lots in Blank: The Elyria Savings & Trust Company.
PLAT VOL. 13, Pgs. 16-17.

SUB. 6-A
VOL. 17, PG. 25.

COPYRIGHT 1962
U.S. CODE, TITLE 17
LOCALITY COUNTY, OHIO
Reproduced by,
Allied Microfilm Corp.
Akron, Ohio

ELYRIA TOWNSHIP



ROSEALEE ADDITION TO SPRING VALLEY
ELYRIA TOWNSHIP
VOL. 16, PG. 39-A
Lots in Blank: Chester W. & Helen Roberta Stolzenburg.

The Board of Education
City of Elyria.