

2

EATON TWP
NE Corner Scale 1"=400'

N

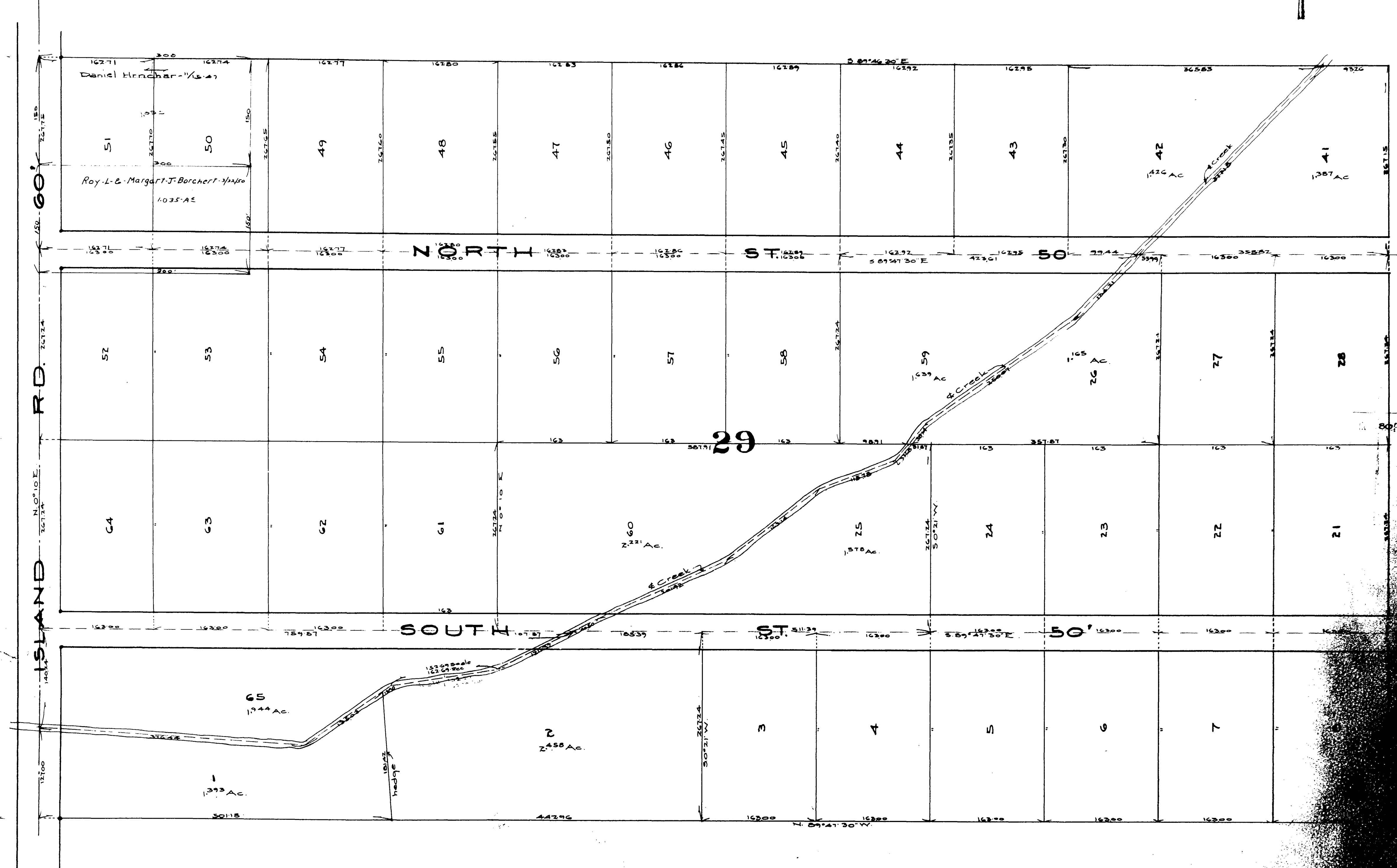
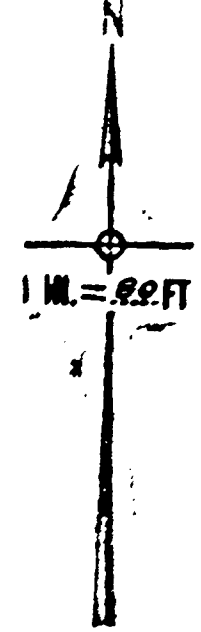
4

2

MAP OF
EATON TOWNSHIP

COPYRIGHT 1962
U.S. CODE, TITLE 17
LOHAIN COUNTY, OHIO
Reproduced by,
Allied Microfilm Corp.
Akron, Ohio

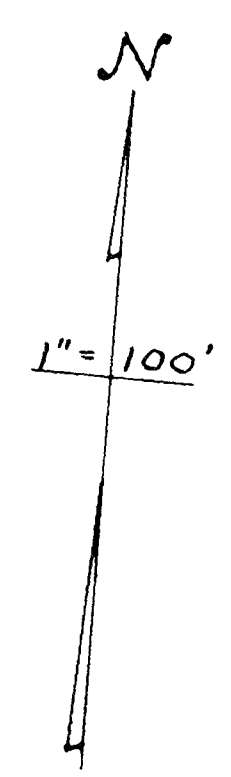
Vacated See File No 243544 12/6-35
 Carpenter's Creek Sub. Vol 13 Pg 18
 Lots in blank: The County Mortgage Co.
 The Crescent Investment Co. 1/21/29
 The Citizens Home Farming Assn Co. 9/1/28
 Paul Christiana Hrczlar 7/5/42



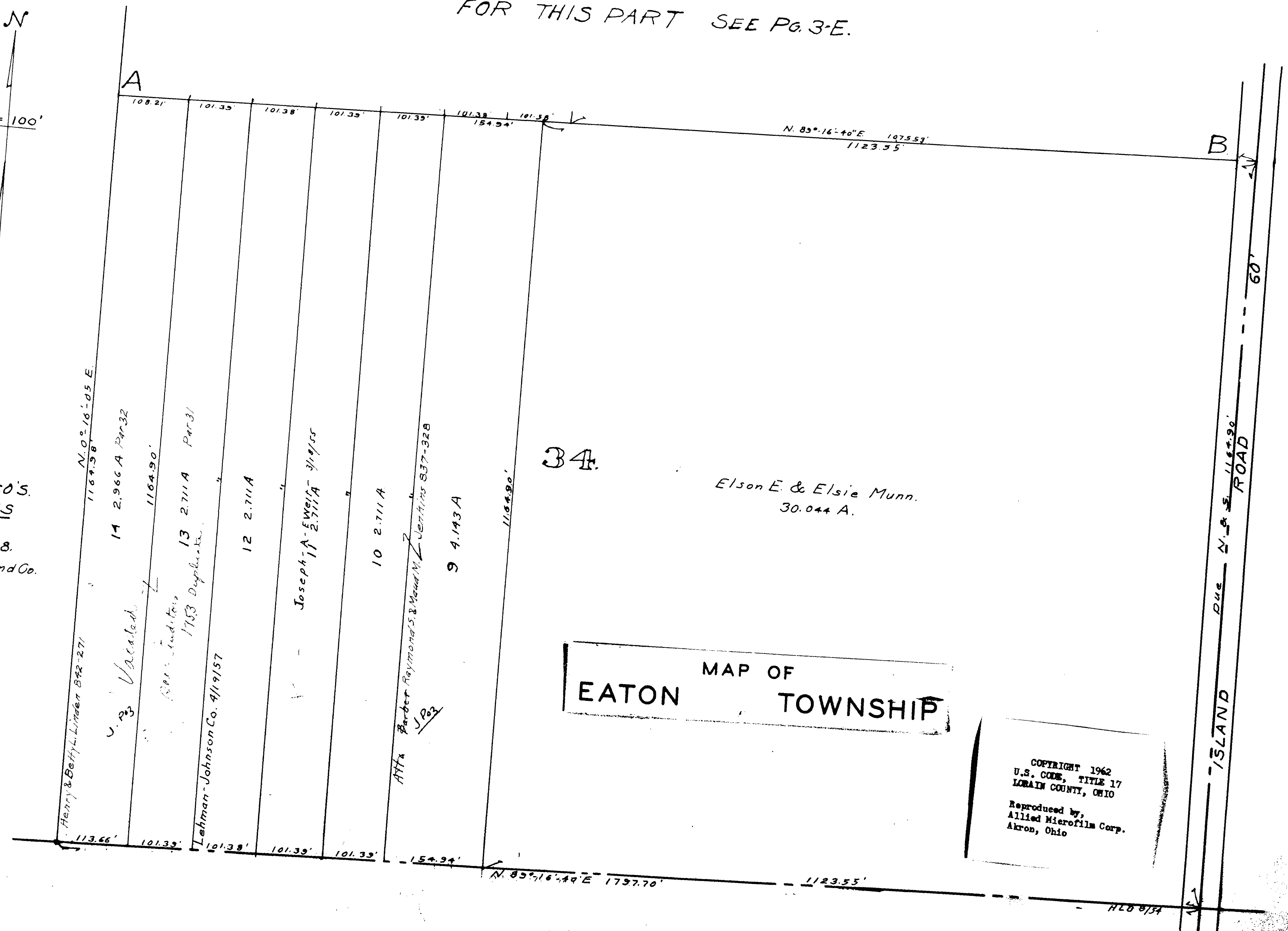
MAP OF
 EATON TOWNSHIP

COPYRIGHT 1962
 U.S. CODE, TITLE 17
 IORAIN COUNTY, OHIO
 Reproduced by,
 Allied Microfilm Corp.
 Akron, Ohio

FOR THIS PART SEE Pg. 3-E.



THE SOUTH HILLS LAND CO'S.
SOUTH WEST FARMS
EATON TOWNSHIP.
PLAT BOOK VOL. 16, PG. 18.
Lots in Blank: The South Hills Land Co.



EATON MAP OF TOWNSHIP

COPYRIGHT 1962
U.S. CODE, TITLE 17
LORAIN COUNTY, OHIO
Reproduced by,
Allied Microfilm Corp.
Akron, Ohio

COPYRIGHT 1962
 U.S. CODE, TITLE 17
 LORAIN COUNTY, OHIO
 Reproduced by,
 Allied Microfilm Corp.
 Akron, Ohio

THE SOUTH HILLS LAND CO'S.
 HOMESITE NO 1
 EATON TOWNSHIP.
 PLAT BOOK VOL. 16 PG. 19
 Lots in Blank: The South Hills Land Co.

MAP OF
 EATON TOWNSHIP

