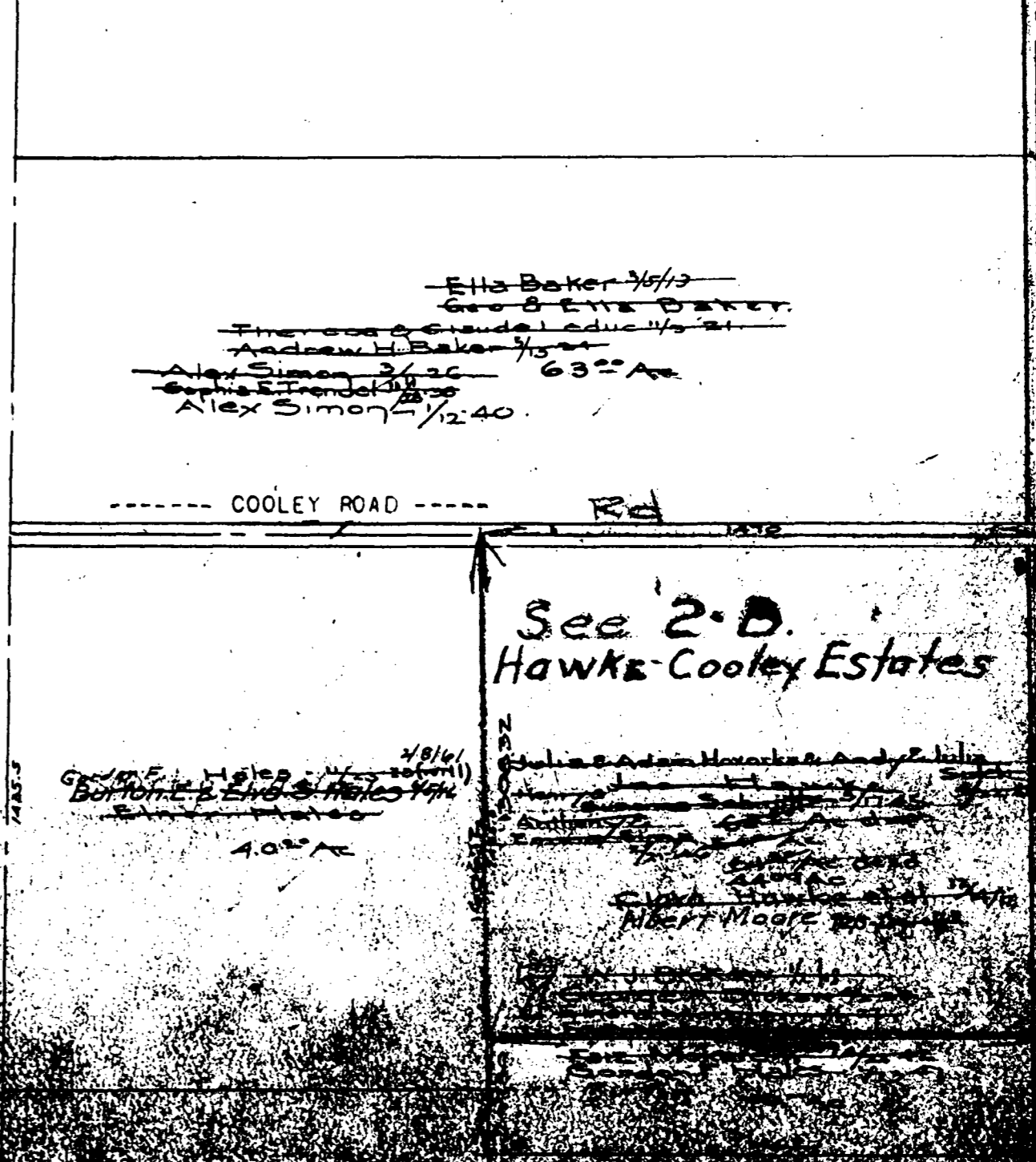
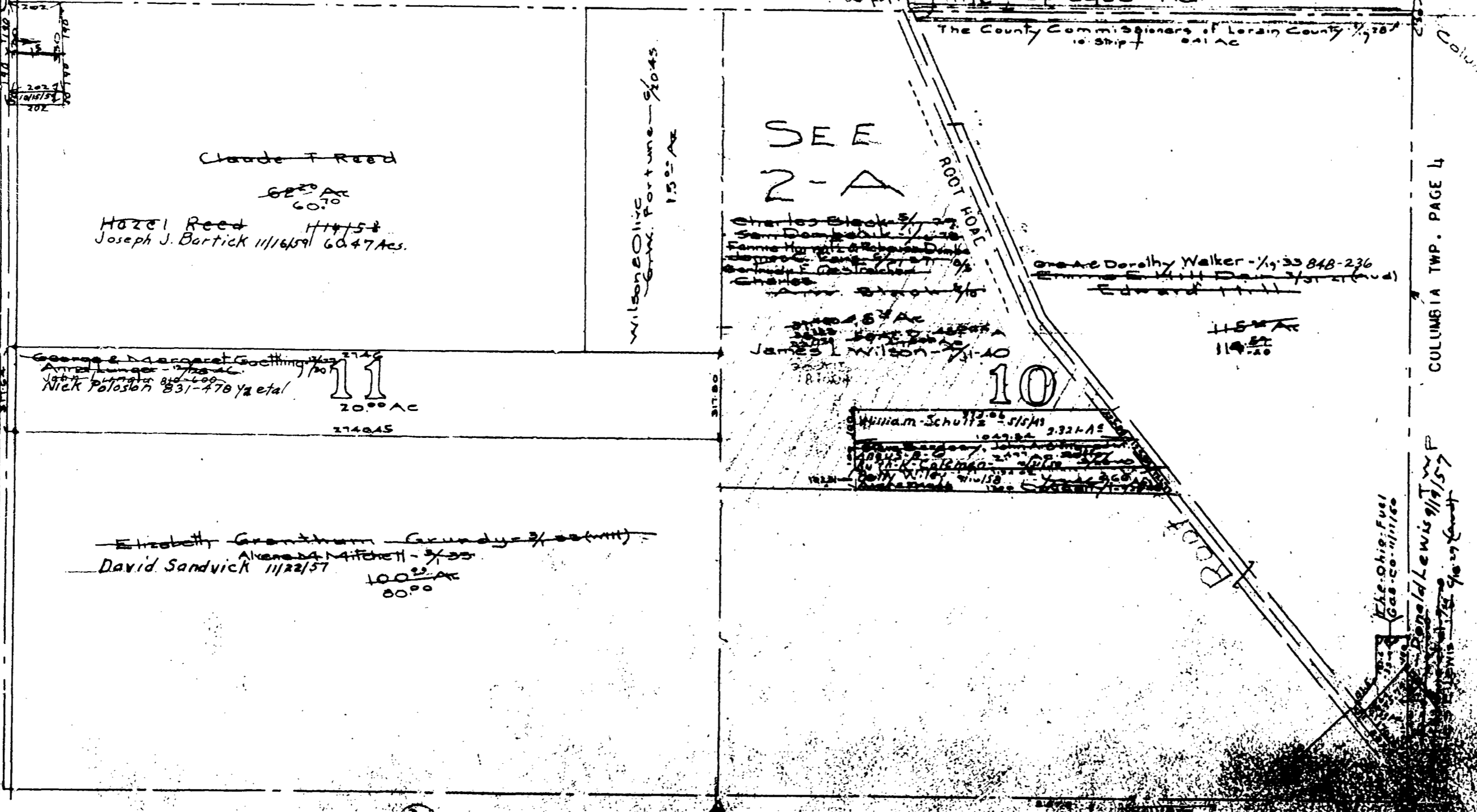
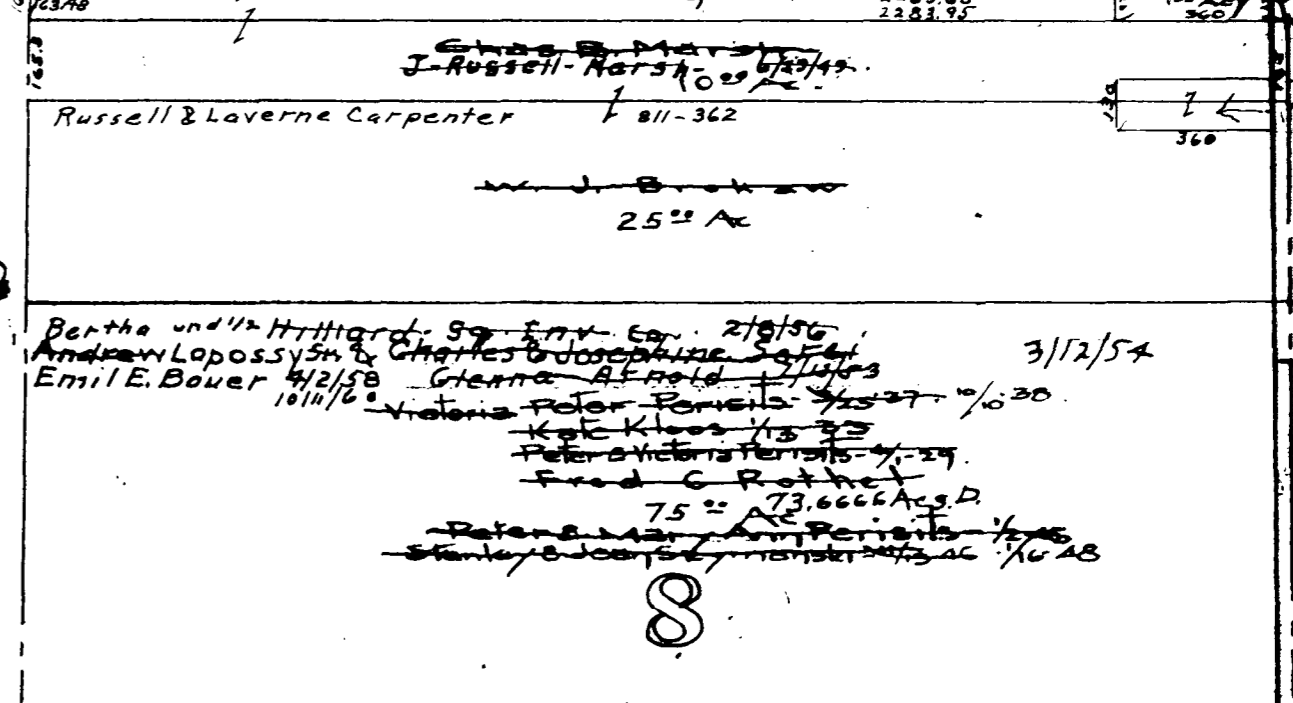
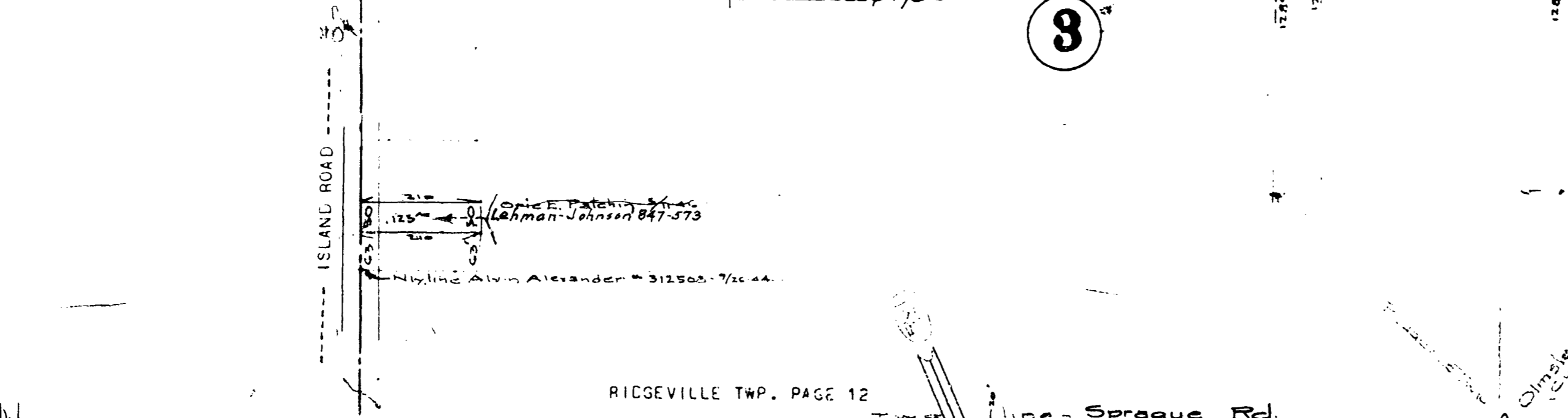
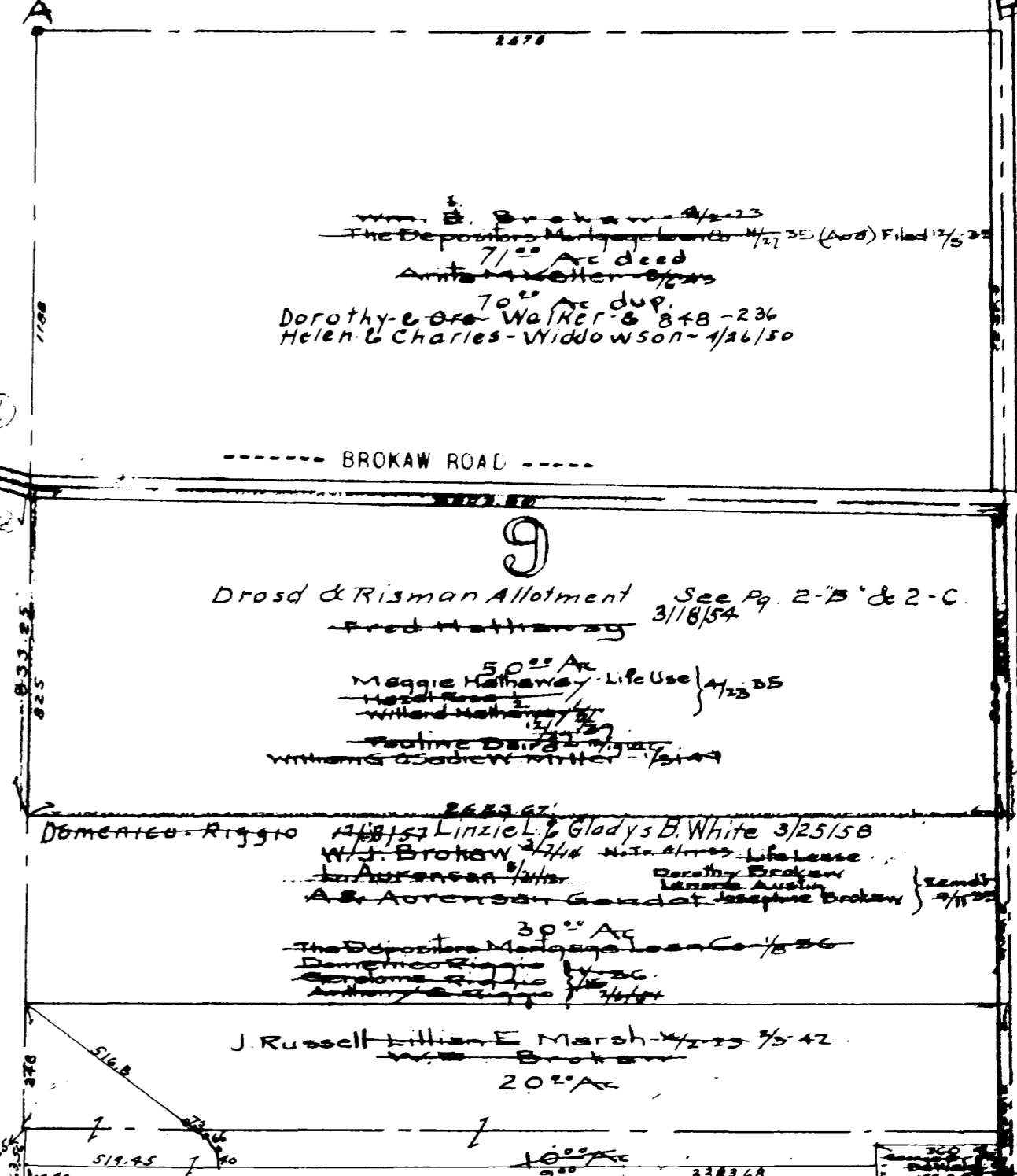
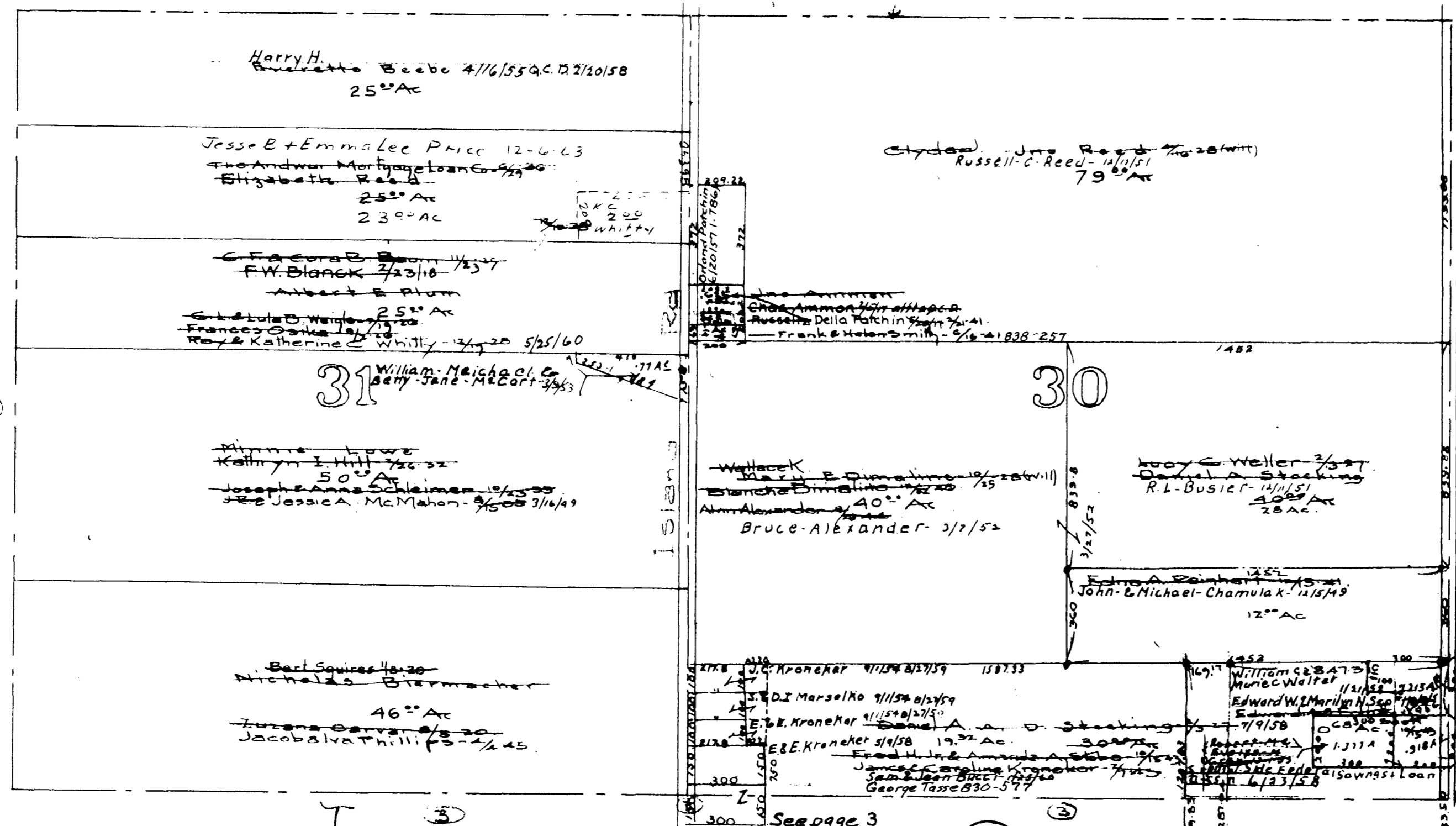
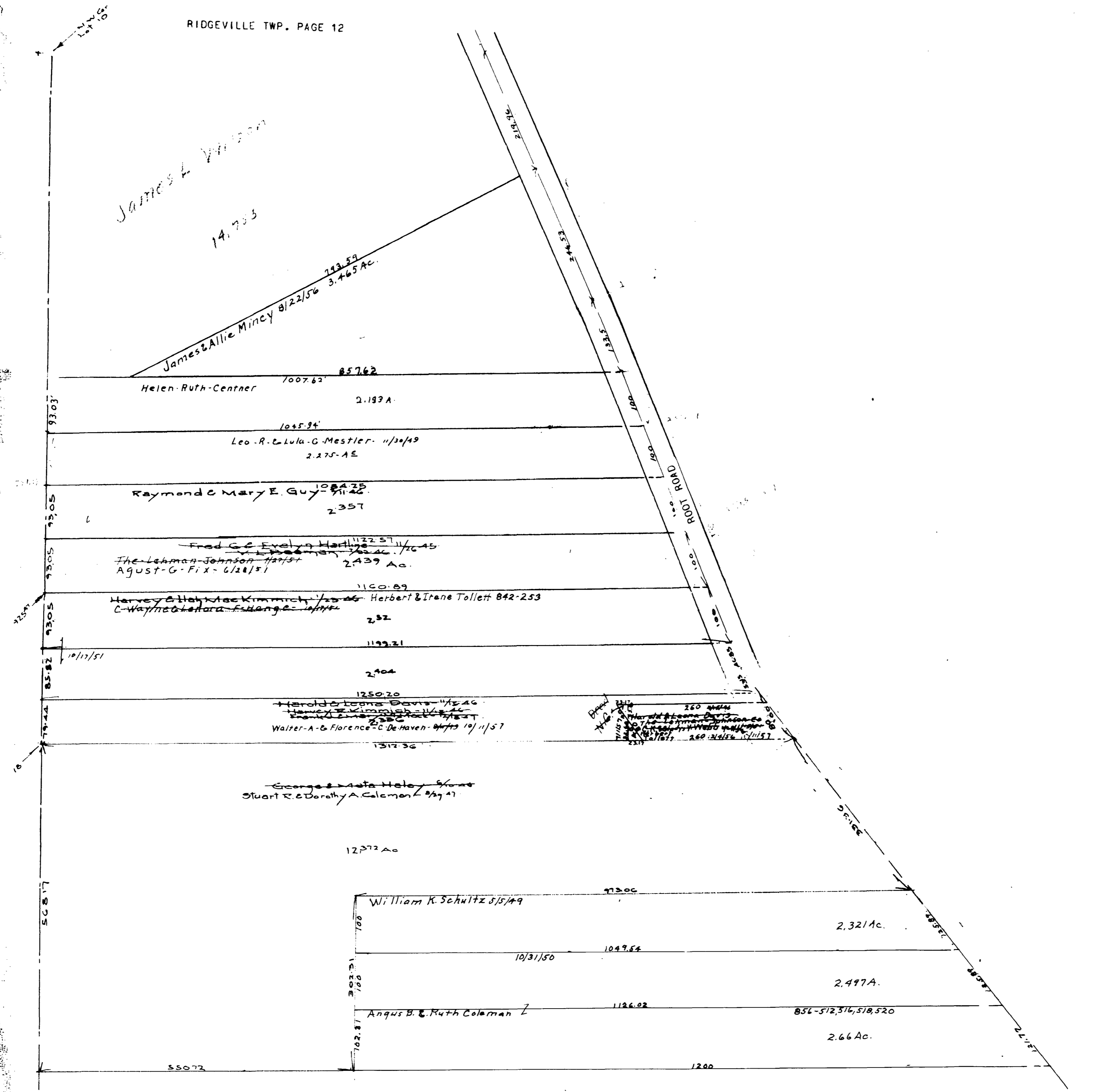
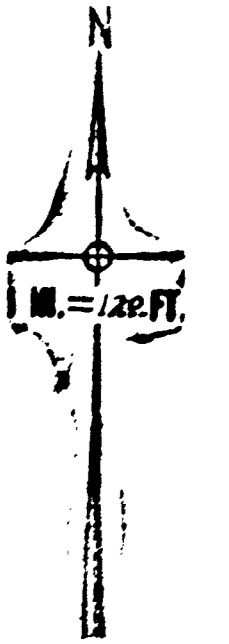


RIDGEVILLE TWP. PAGES 7 & 12



MAP OF EATON TOWNSHIP

COPYRIGHT 1962 U.S. CODE, TITLE 17 LORAIN COUNTY, OHIO Reproduced by Allied Microfilm Corp. Akron, Ohio

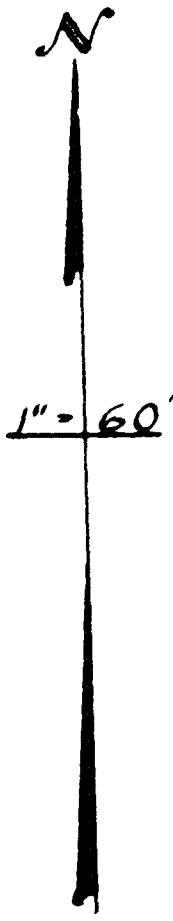


EATON MAP OF TOWNSHIP

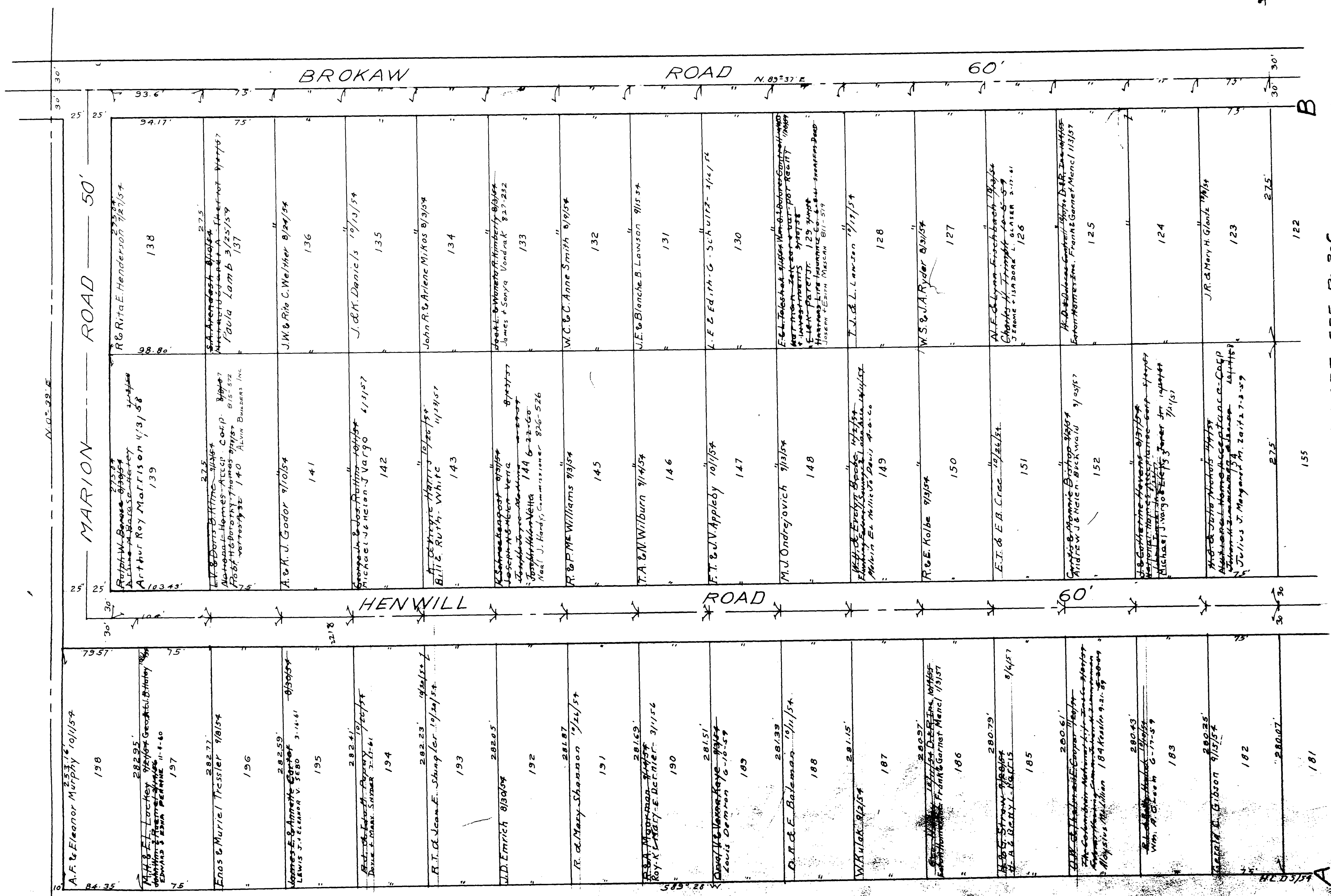
COPYRIGHT 1962
U.S. CODE, TITLE 17
LORAIN COUNTY, OHIO
Reproduced by,
Allied Microfilm Corp.
Akron, Ohio

MAP OF
EATON TOWNSHIP

COPYRIGHT 1962
U.S. CODE, TITLE 17
LORAIN COUNTY, OHIO
Reproduced by,
Allied Microfilm Corp.
Akron, Ohio

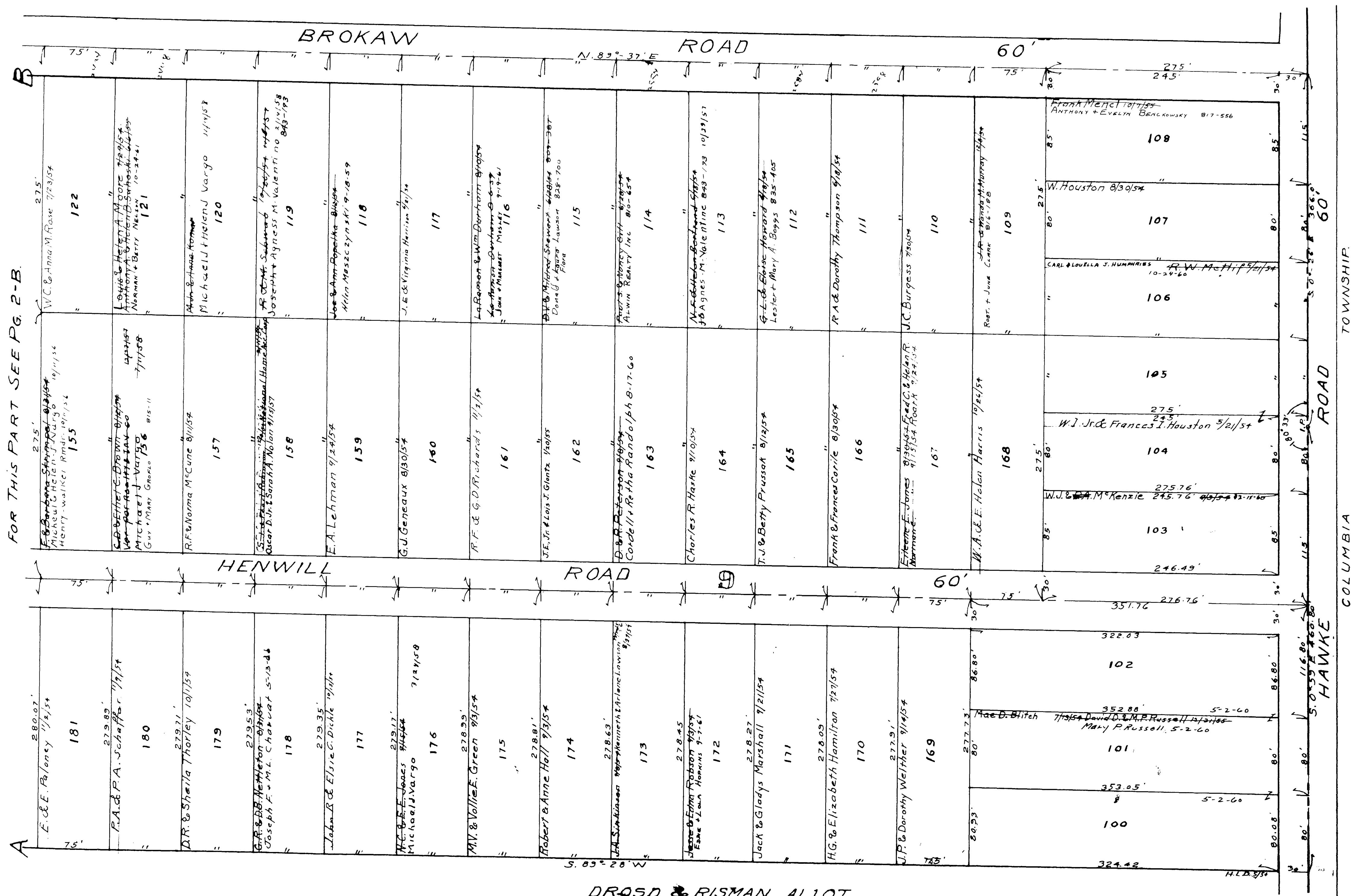


DROSD & RISMAN ALLOTMENT.
O.L. 9 EATON TOWNSHIP.
Scale 1" = 60'
Lots in Blank: Wm. Drosd, Wm. B. Risman.
VOL. 16, PG. 26.



129

FOR THIS PART SEE Pg. 2-C.



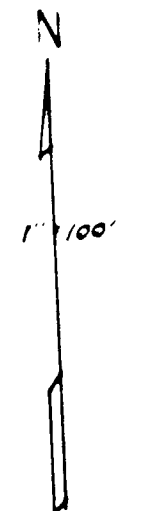
MAP OF EATON TOWNSHIP

COPYRIGHT 1962 U.S. CODE, TITLE 17 LORAIN COUNTY, OHIO

HAWKE-COOLEY ESTATES

Q.L. 7 EATON TWP. Vol. 17 Pg 11
Lots in blank Albert Moore

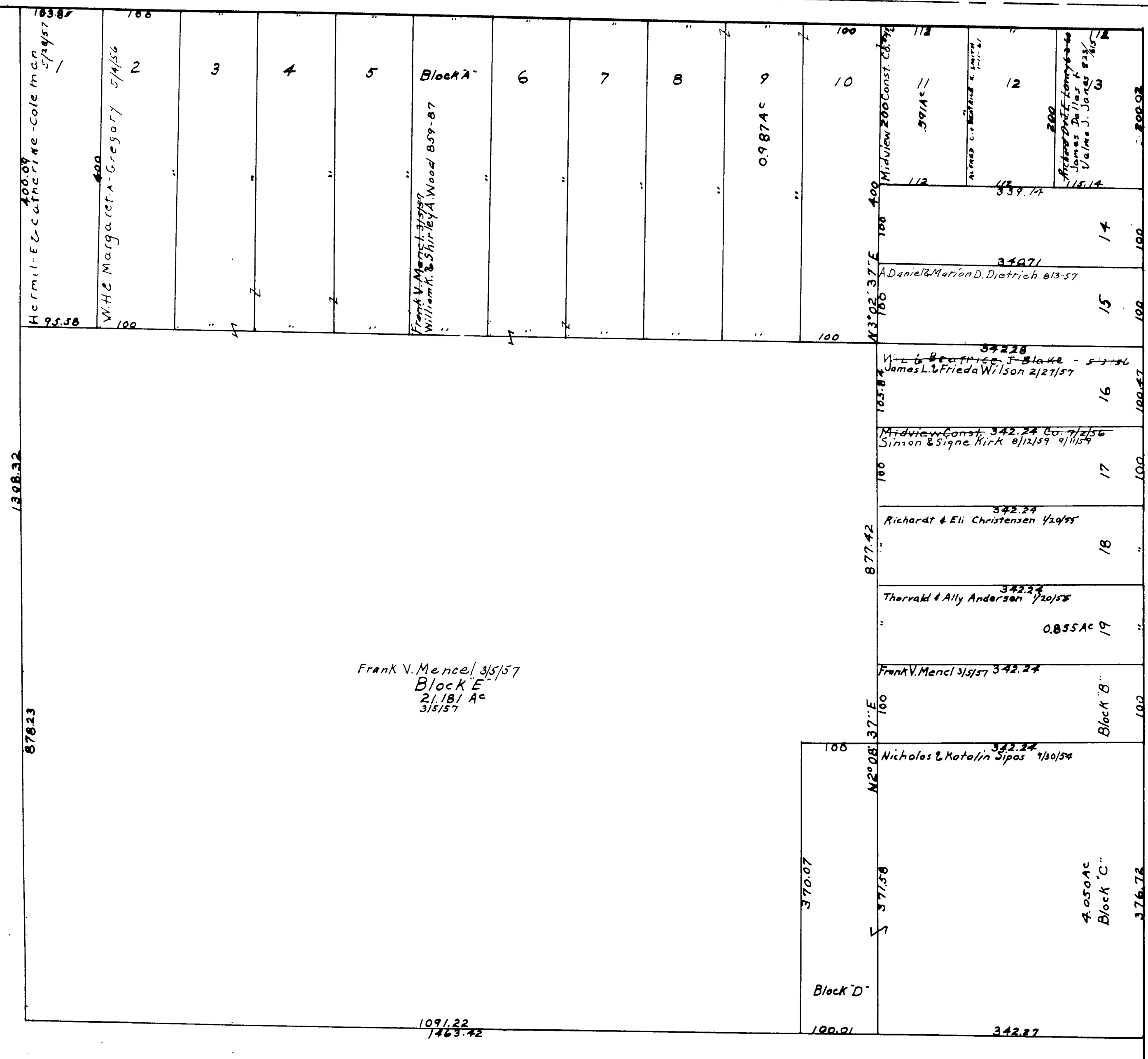
20



COOLEY RD. 60'

OLB
OL7

N 86° 57' 28" W 1470'



HAWKE RD. 60'

MAP OF
EATON TOWNSHIP

COPYRIGHT 1962
U.S. GOVERNMENT, TITLE 17
LORAIN COUNTY, OHIO
Reproduced by
Allied Microfilm Corp.
Akron, Ohio