

9

3

13

17

MAP OF  
CARLISLE TOWNSHIP

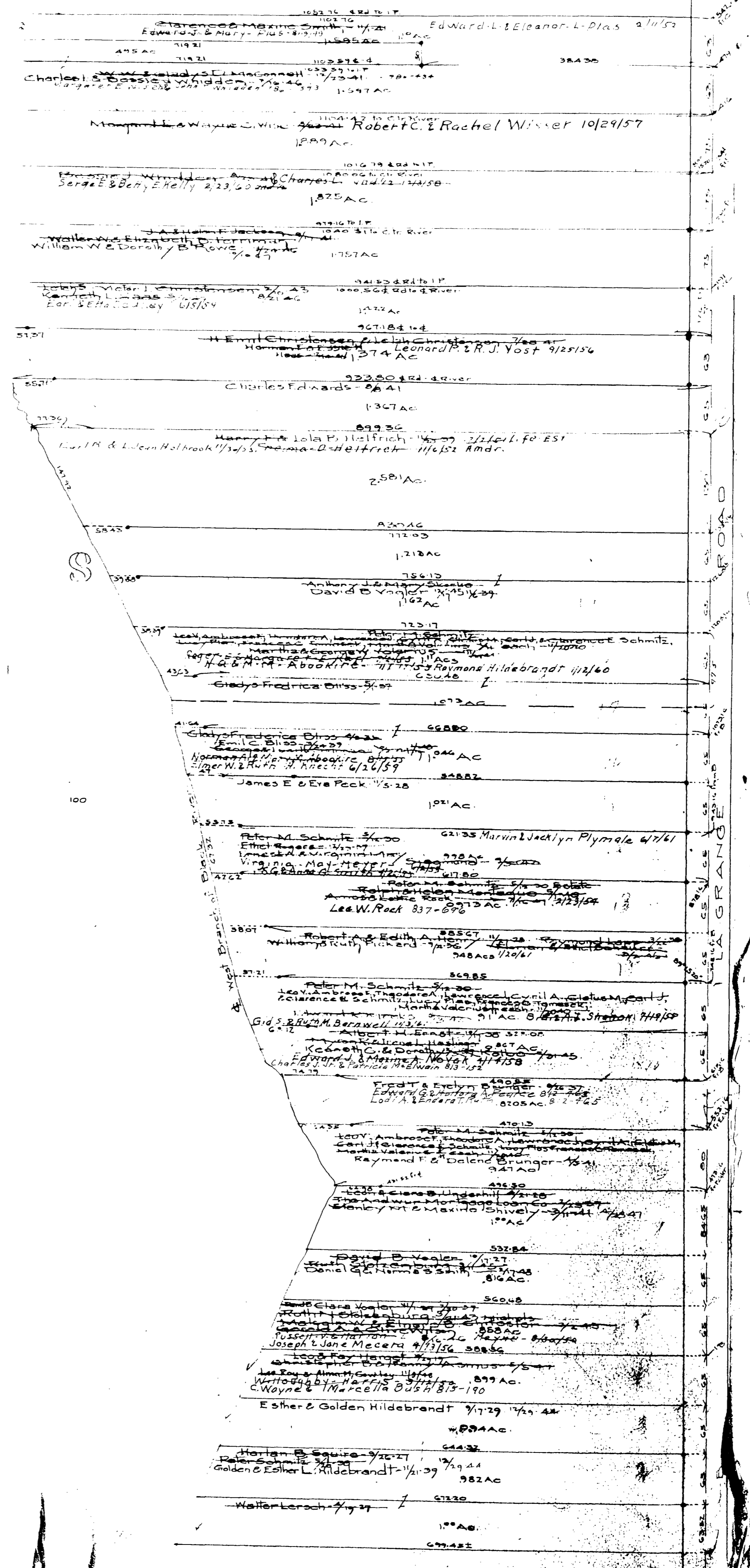
COPYRIGHT 1962  
U.S. G.O.P.F. TITLE 17  
LORAIN OHIO, OHIO  
Reproduced by  
Allied Microfilm Corp.  
Akron, Ohio

MAP OF  
CARLISLE TOWNSHIP

OPP-8

COPYRIGHT 1962  
U.S. CODE, TITLE 17  
LORAIN COUNTY, OHIO

Reproduced by,  
Allied Microfilm Corp.  
Akron, Ohio



OPPOSITE PAGE 1



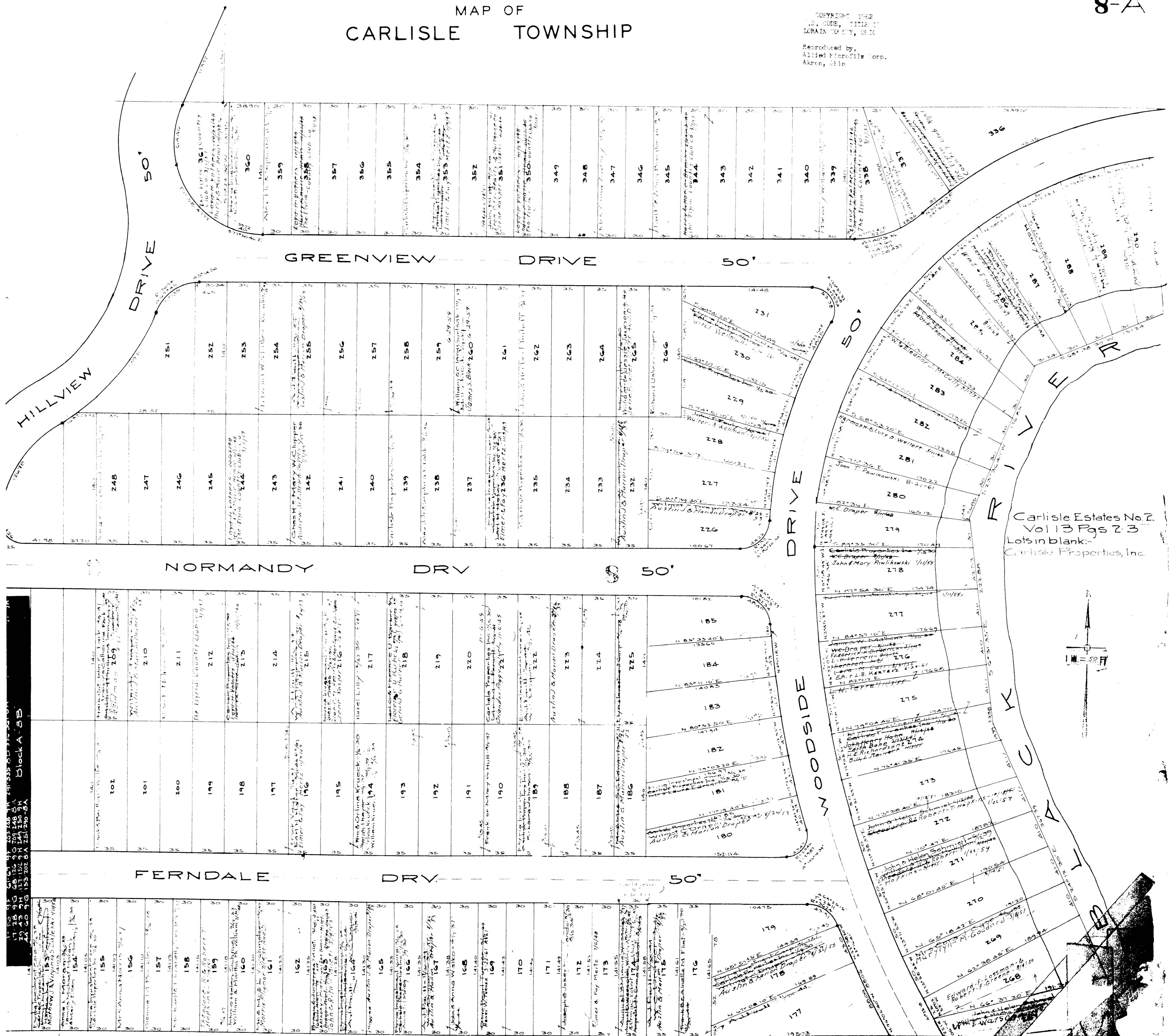
MAP OF  
**CARLISLE TOWNSHIP**

COPYRIGHT 1962  
 U.S. CODE, TITLE 17  
 LORAIN COUNTY, OHIO  
 Reproduced by,  
 Allied Microfilm Corp.  
 Akron, Ohio

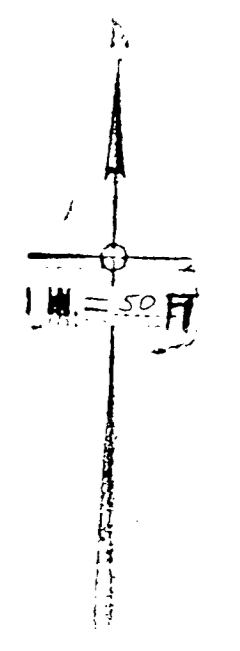
MAP OF CARLISLE TOWNSHIP

COPYRIGHT 1942 U.S. CODE, TITLE 17 LAMAIN COUNTY, OHIO

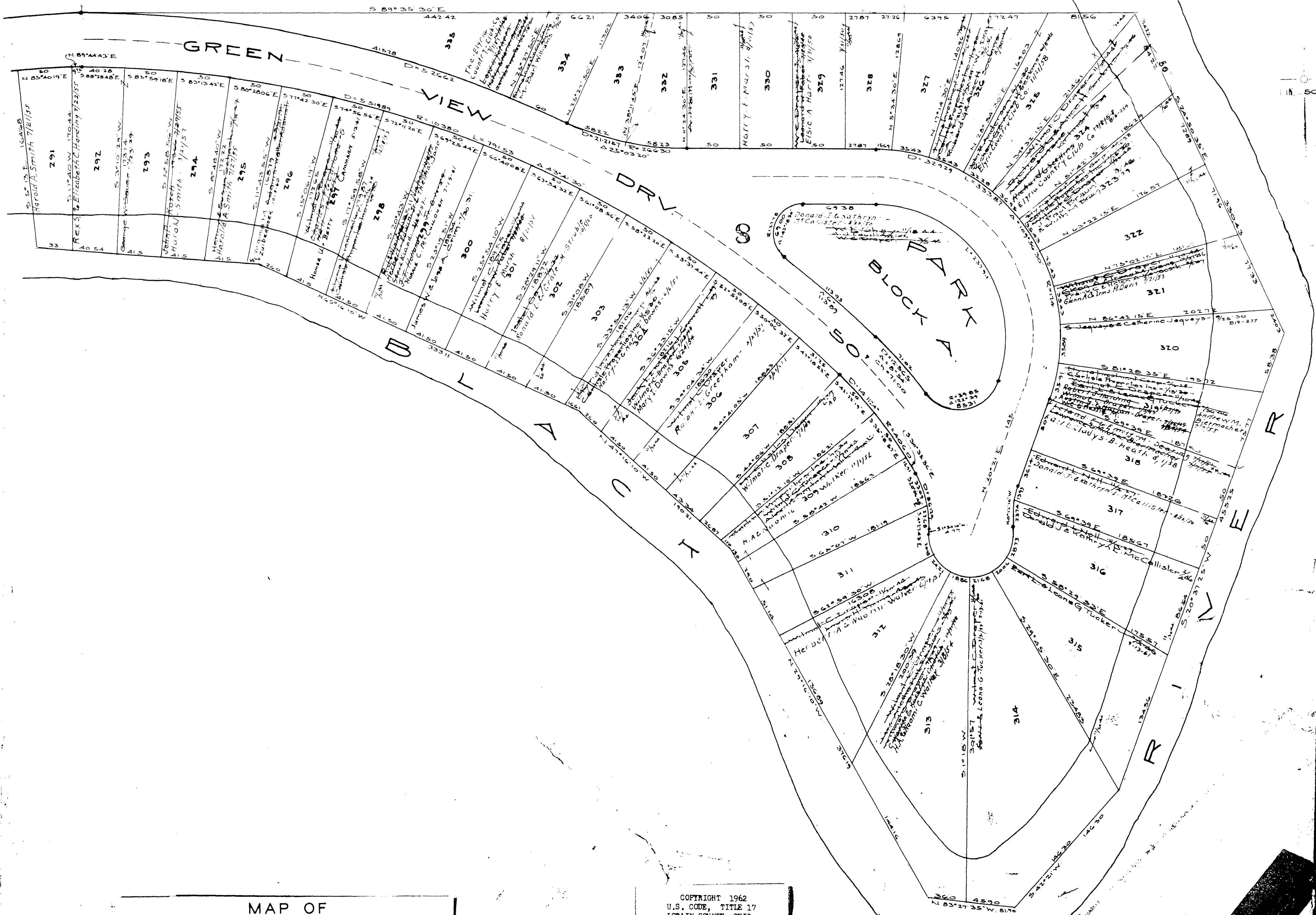
Reproduced by Allied Microfilm Corp. Akron, Ohio



Carlisle Estates No. 2 Vol 13 Pgs 2-3 Lots in blank: Carlisle Properties, Inc.



17 28 95 68 124 90 209 148 84  
 24 43 24 111 152 34 241 230 34  
 24 60 36 153 268 34 251 230 34  
 Block A 5B



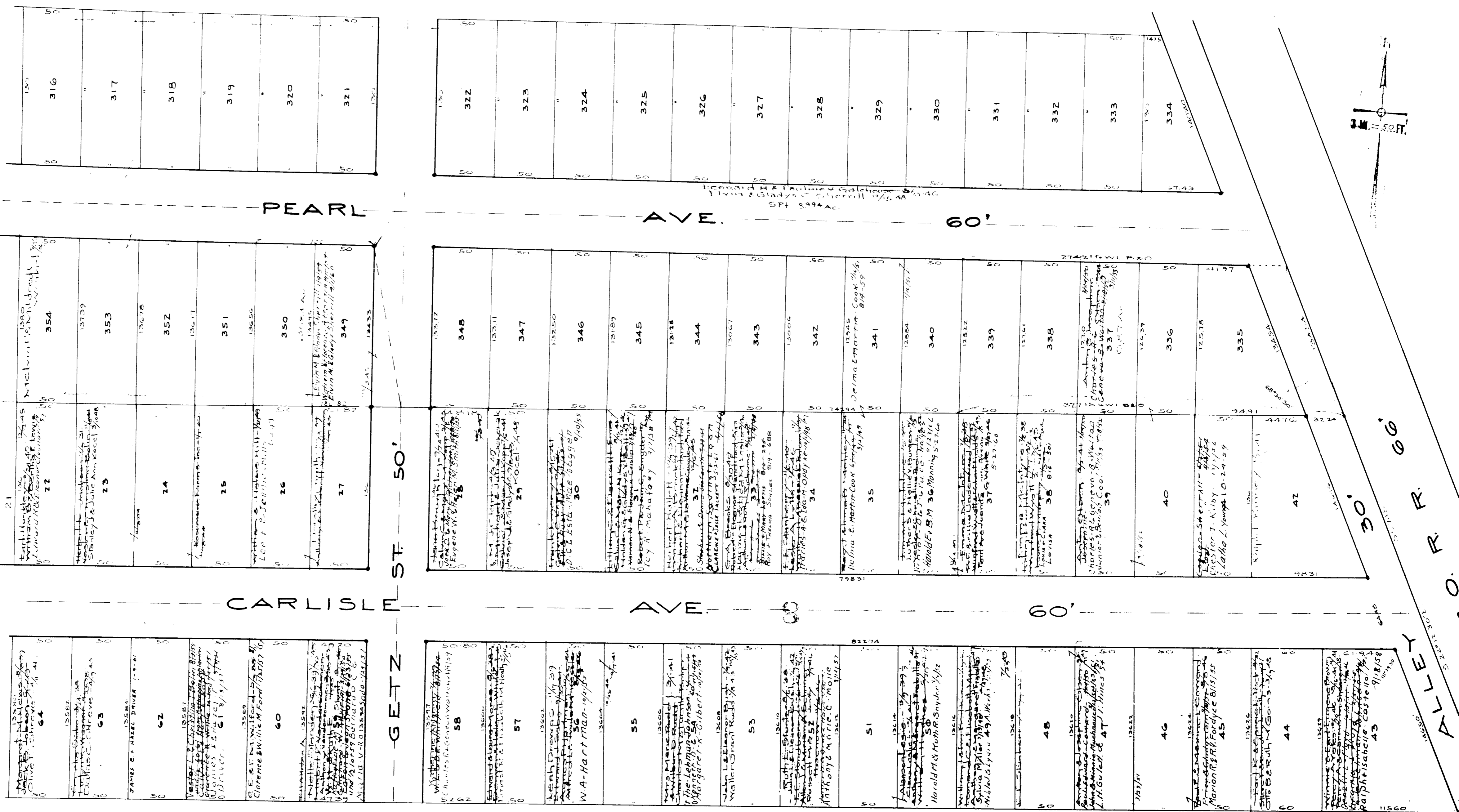
MAP OF  
CARLISLE TOWNSHIP

COPYRIGHT 1962  
U.S. CODE, TITLE 17  
LORAIN COUNTY, OHIO

Reproduced by,  
Allied Microfilm Corp.  
Akron, Ohio



Vacated 2/29/32 File # 224046  
Rosemeade Farms - Vol. 13 Pg 20  
Lots in blank: Rosemeade Farms Inc  
Amelio Reber, Adm'r - 2/2/32  
Leonard H. & Catherine Galchouse - 2/2/32



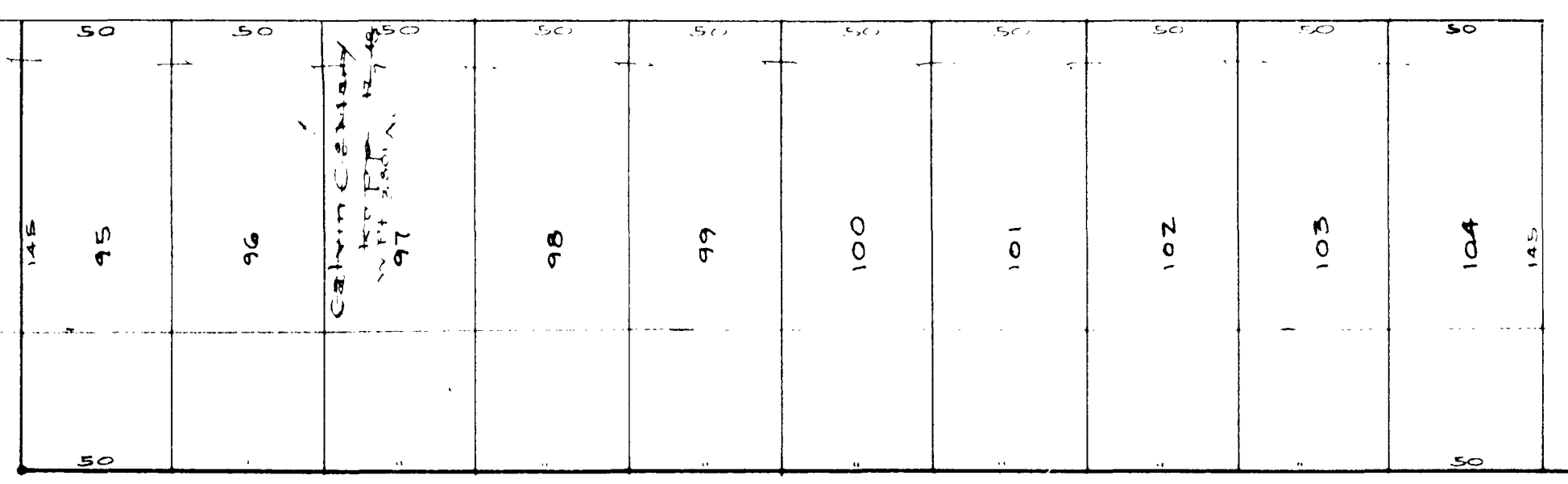
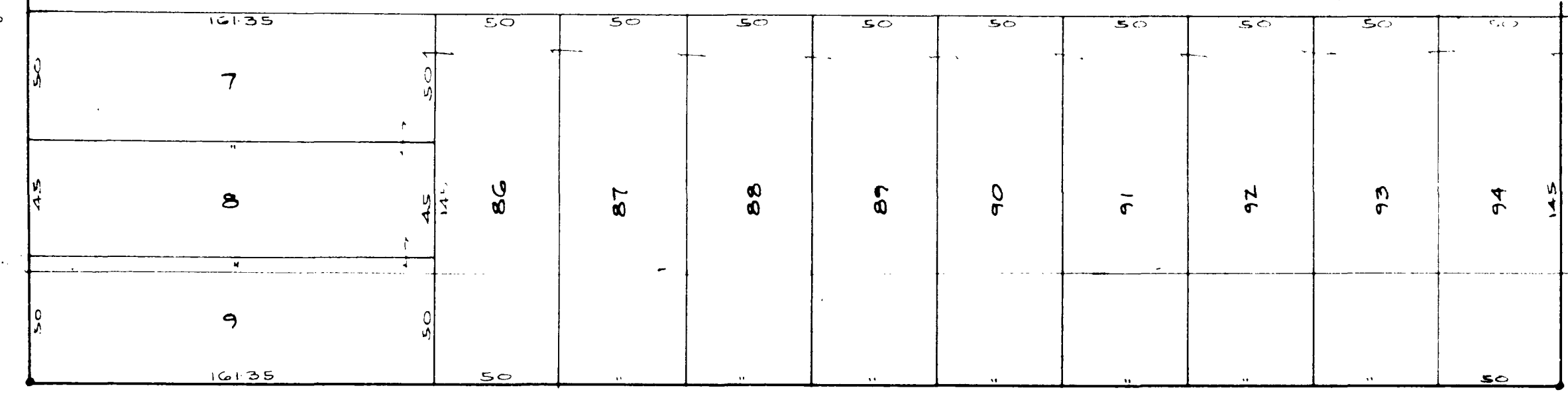
MAP OF  
CARLISLE TOWNSHIP

COPYRIGHT 1962  
U.S. CODE, TITLE 17  
LORAIN COUNTY, OHIO

Reproduced by,  
Allied Microfilm Corp.  
Akron, Ohio

Vacated 2/29-32 File No ZZ4010  
Rosemeade Farms Vol 13 Pg 20  
Lots in blank: - Rosemeade Farms, Inc.  
Antonia Beebe 2/10/32  
C. G. ...  
Melvin Pamildred ...

60'

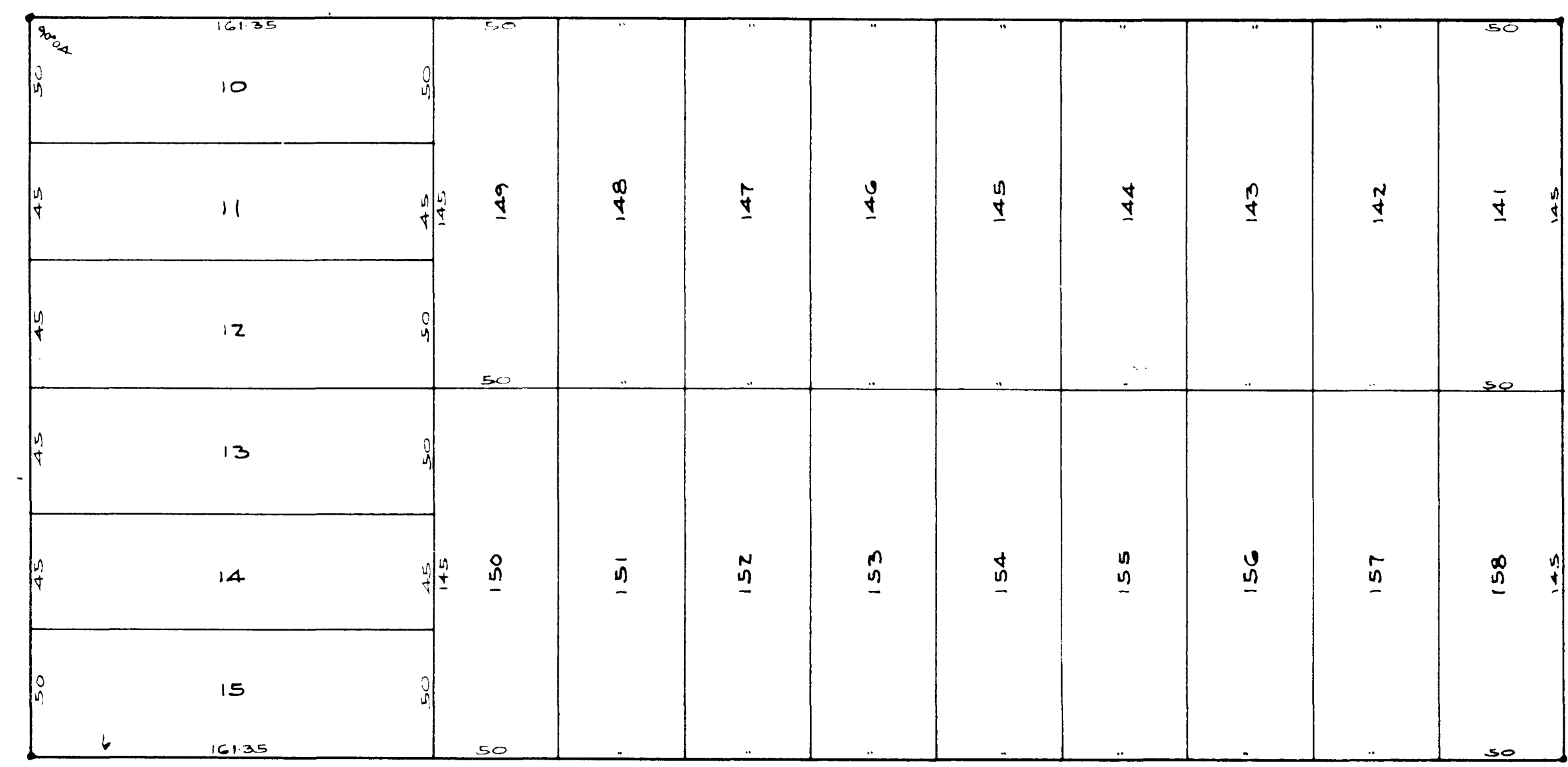


MAYFIELD

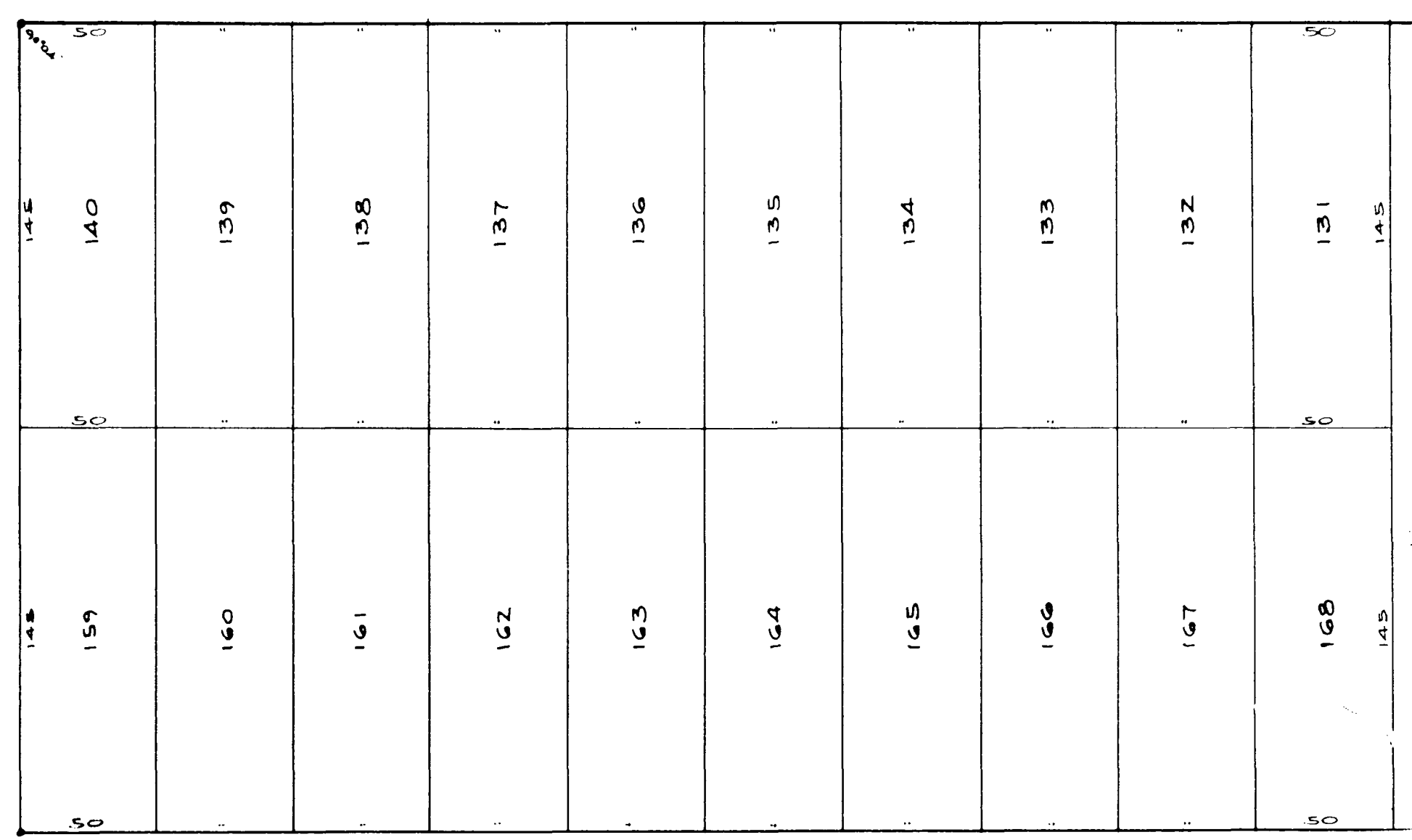
AVE

60'

ROAD



ST. 50'

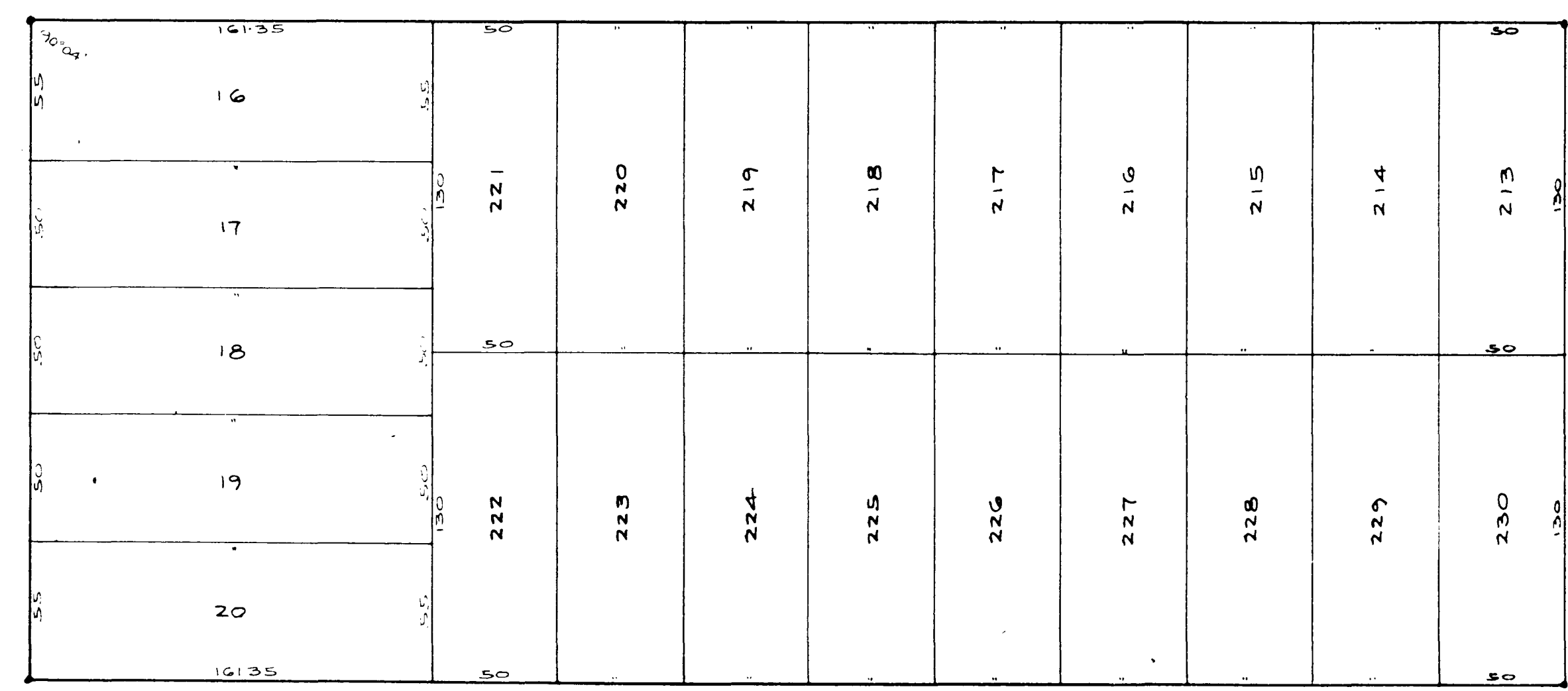


ROSEMEDE

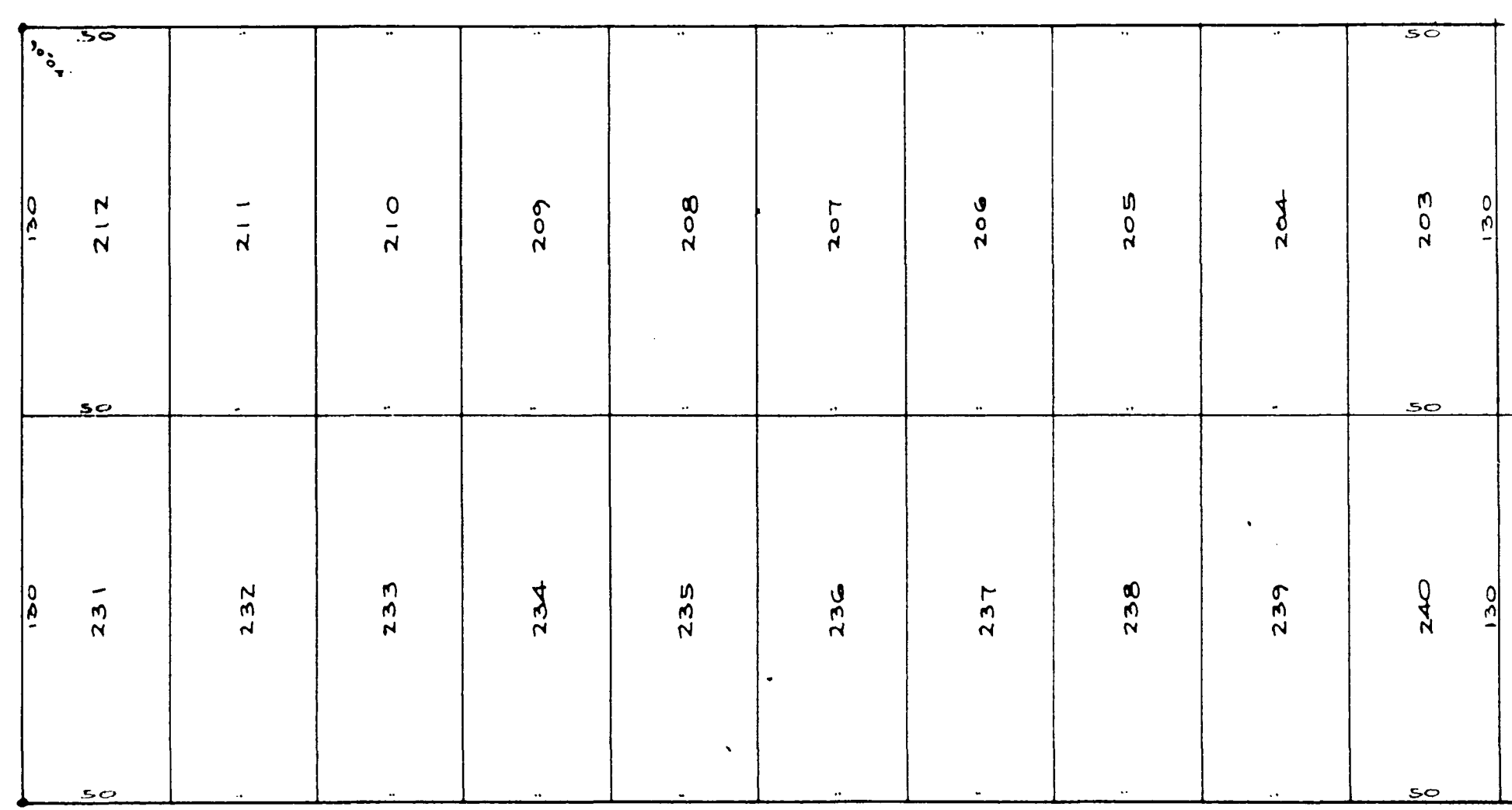
AVE

60'

ROUTE 301  
LA GRANGE



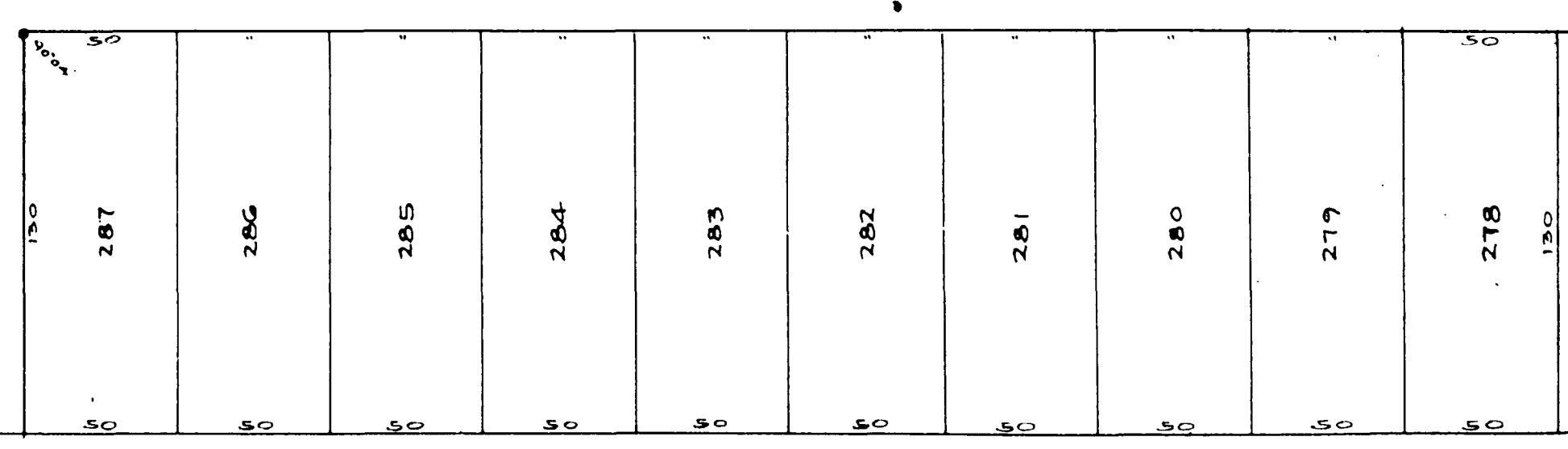
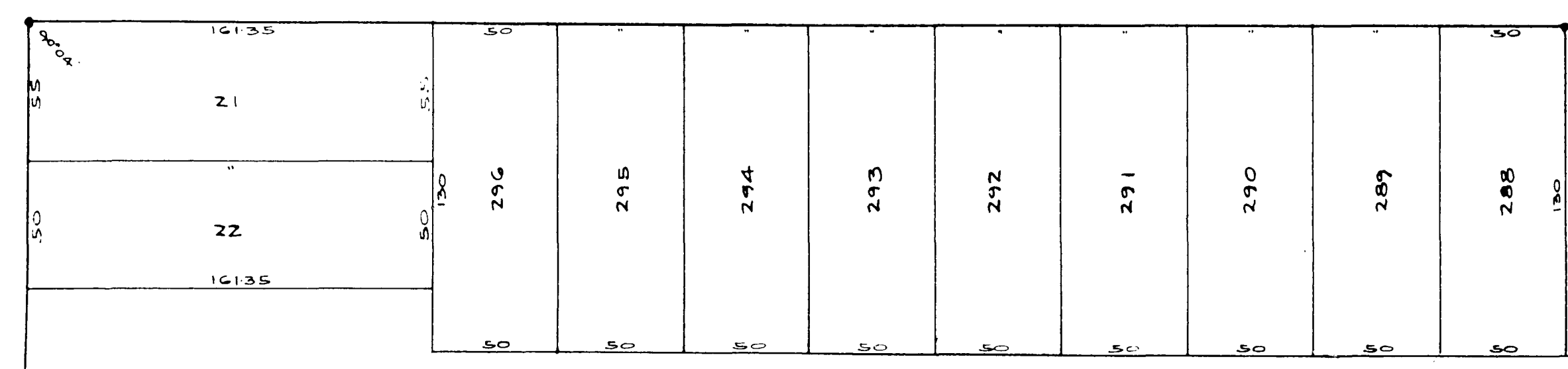
HADAWAY



CHESTER

AVE

60'

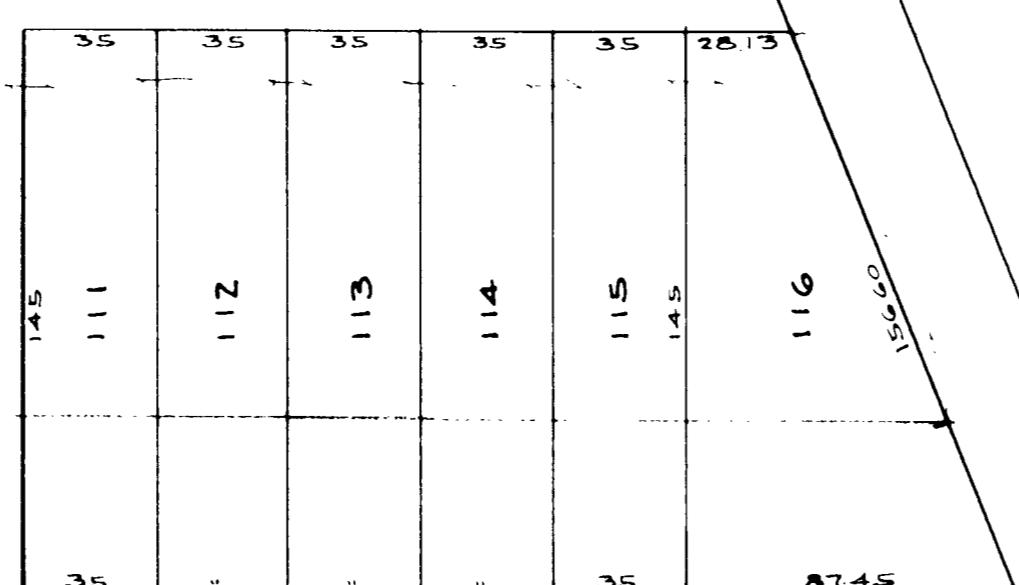
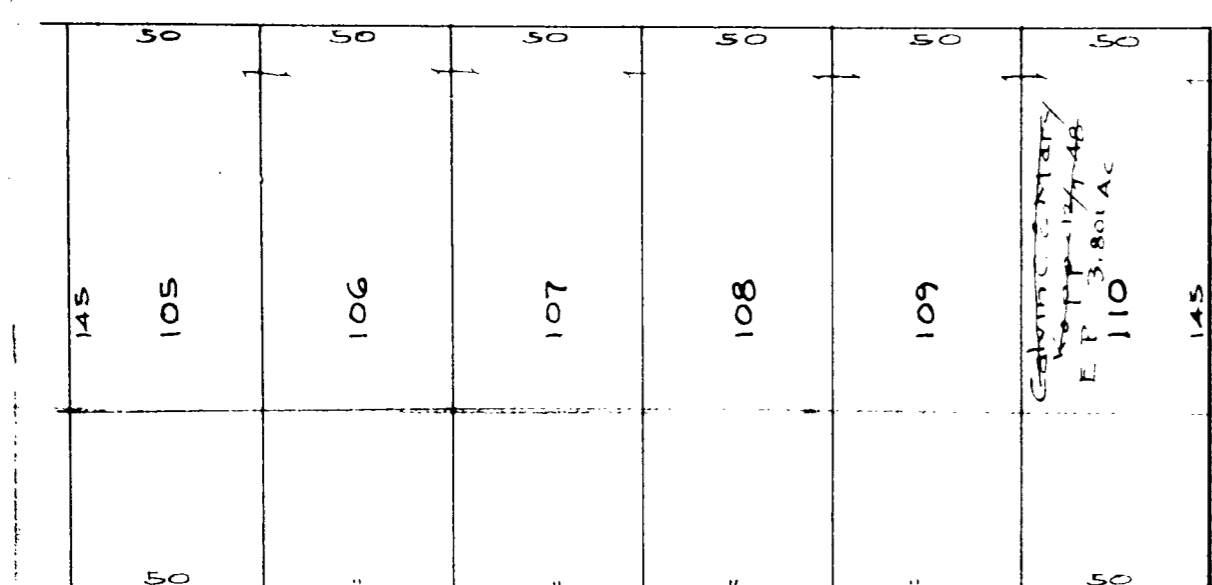


MAP OF  
CARLISLE TOWNSHIP

COPYRIGHT 1962  
U.S. CODE, TITLE 17  
LORAIN COUNTY, OHIO  
Reproduced by,  
Allied Microfilm Corp.  
Akron, Ohio



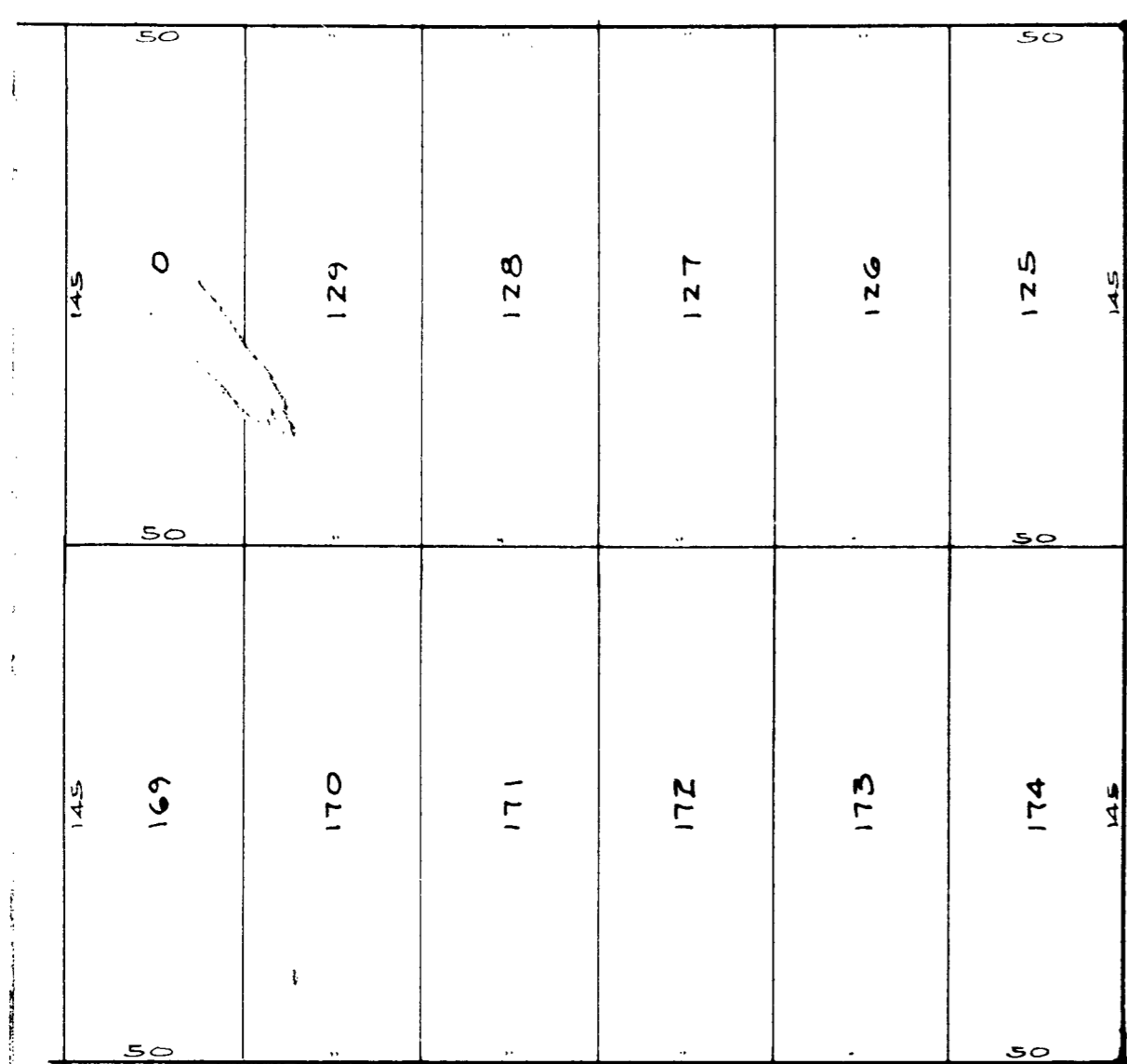
Vacated 2/29/32 File No. ZZ4046  
Rosemeade Farms Vol. 13 Pg. 20  
Lots in blank: - Rosemeade Farms Inc  
Armas Beebe Adm. 7/10/32  
Melvin P. Mildred W. 2/29/46



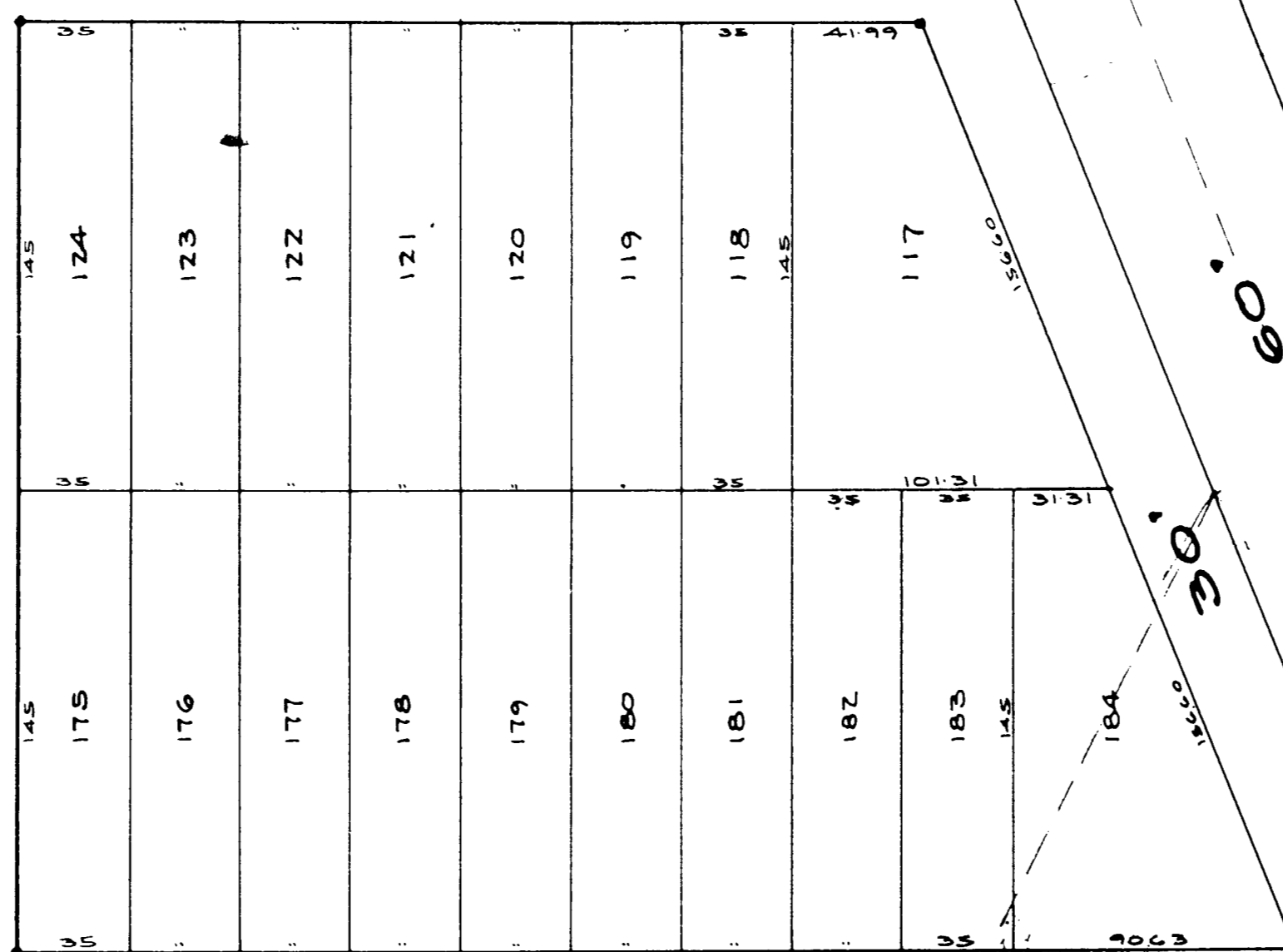
MAYFIELD

AVE.

60'



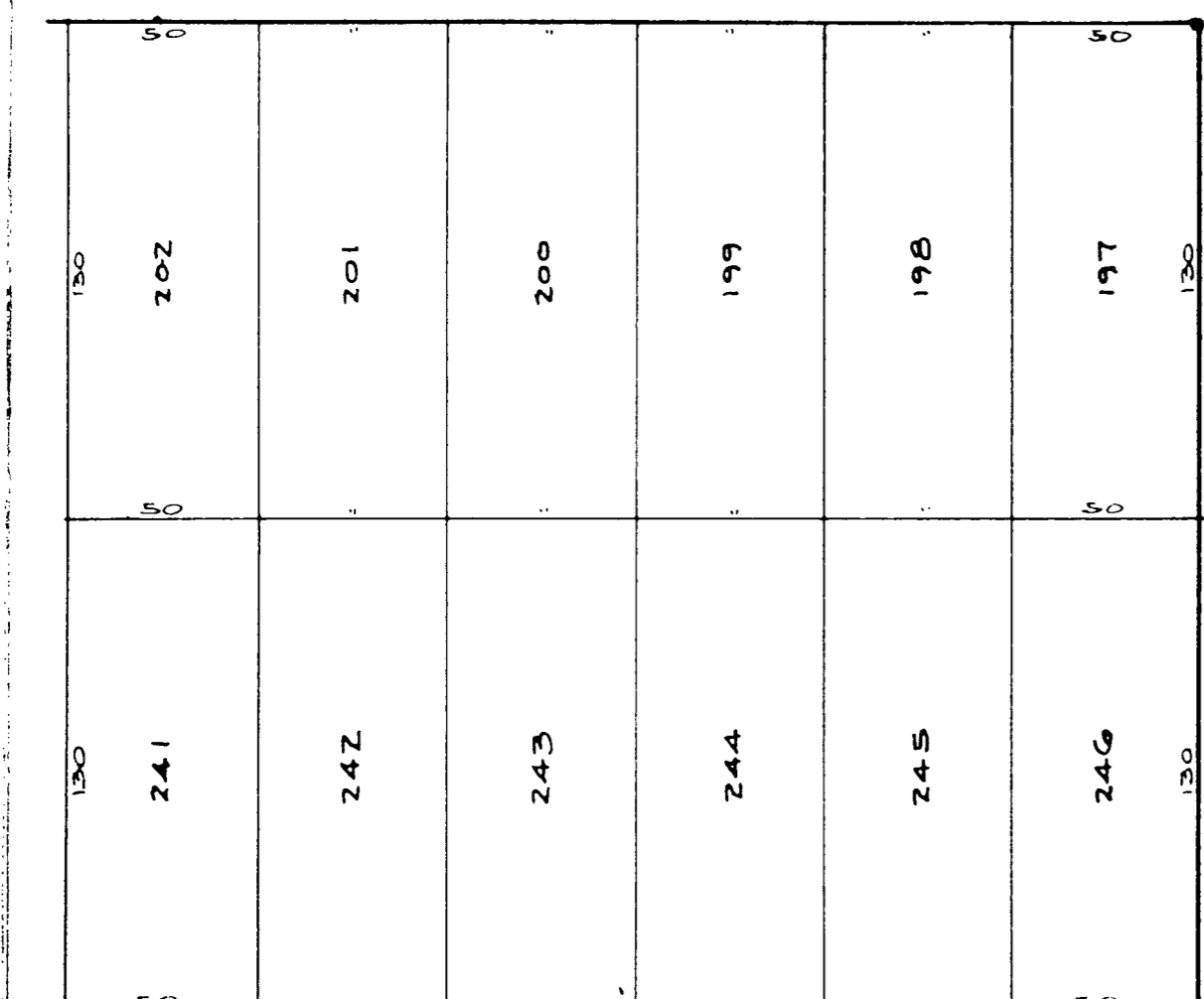
ST. 50'



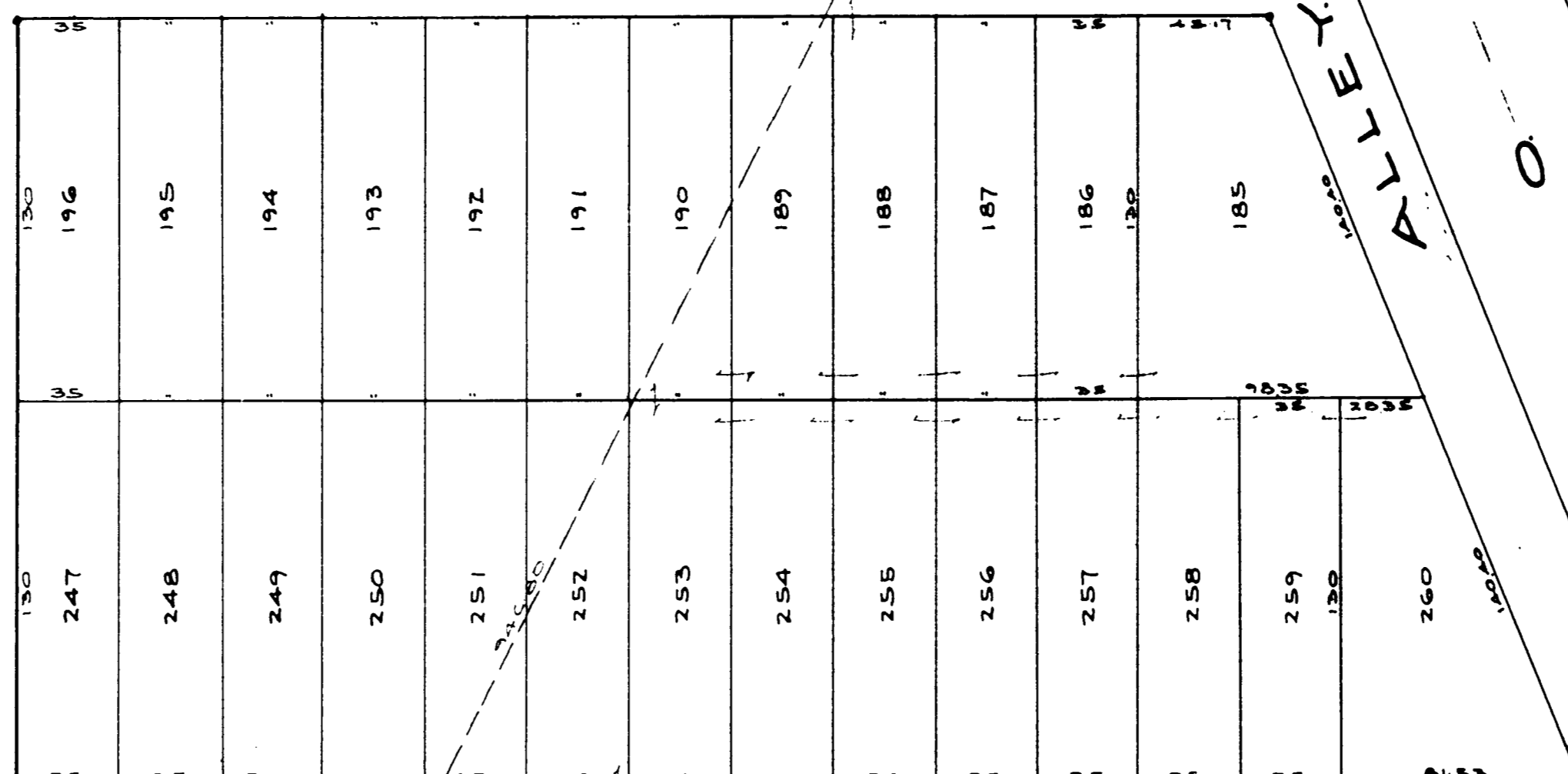
ROSEMEDE

AVE.

60'



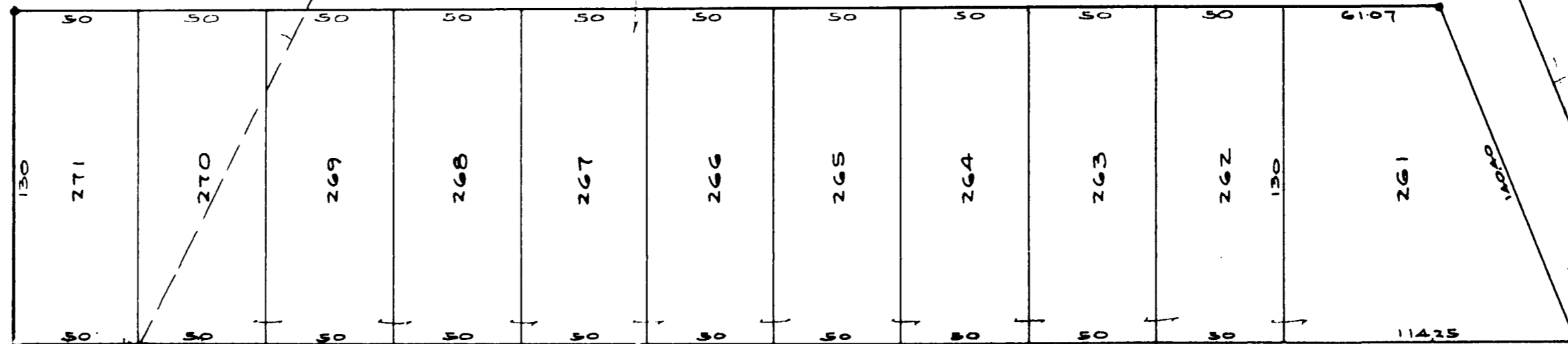
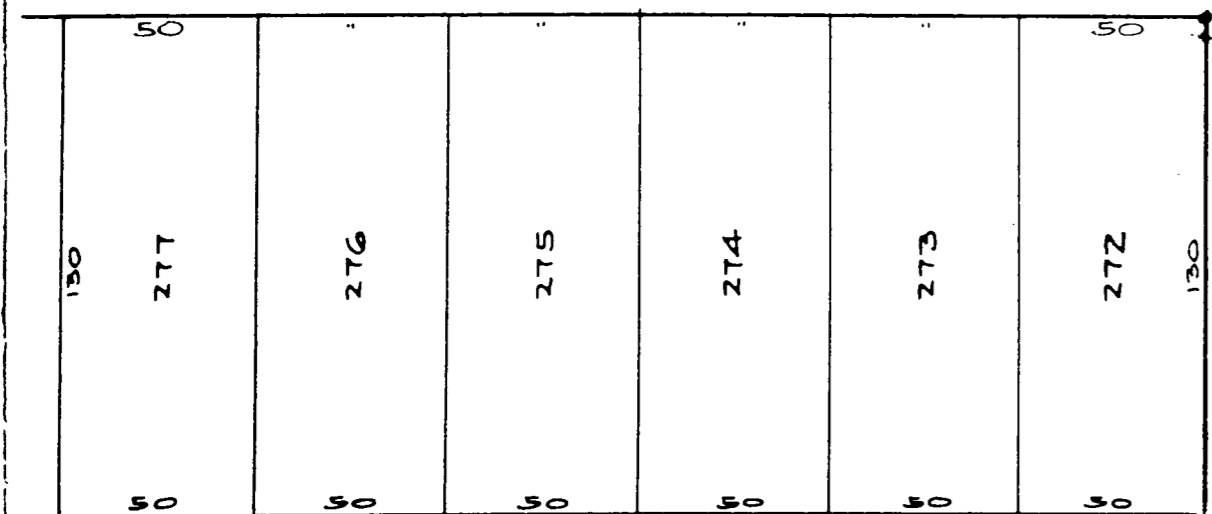
GETZ



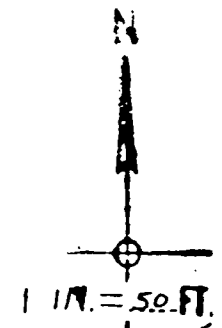
CHESTER

AVE.

60'



ALLEY

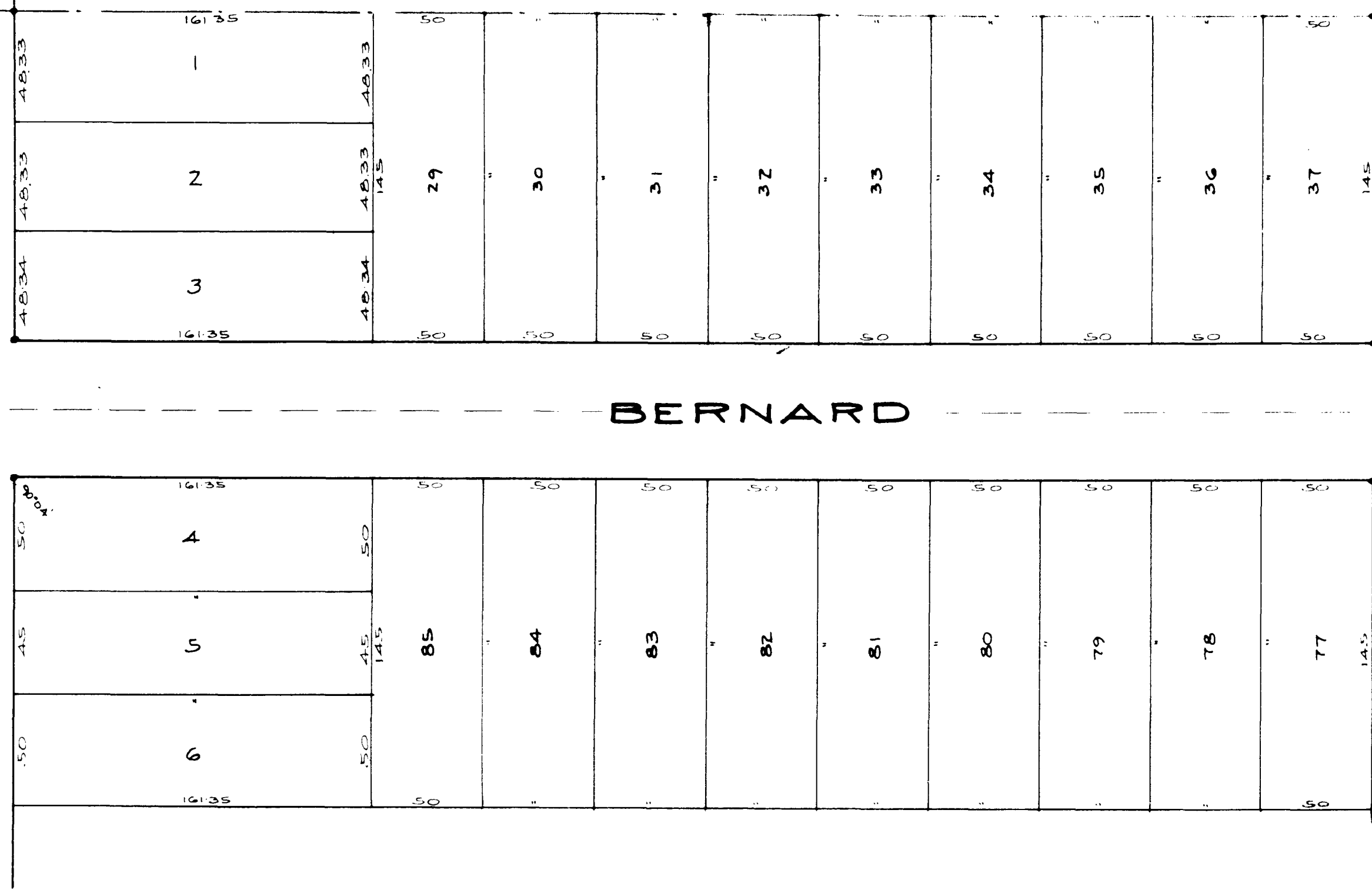


MAP OF CARLISLE TOWNSHIP

COPYRIGHT 1962  
U.S. CODE, TITLE 17  
LORAIN COUNTY, OHIO  
Reproduced by,  
Allied Microfilm Corp.  
Akron, Ohio

LA GRANGE ROAD

ROUTE 301

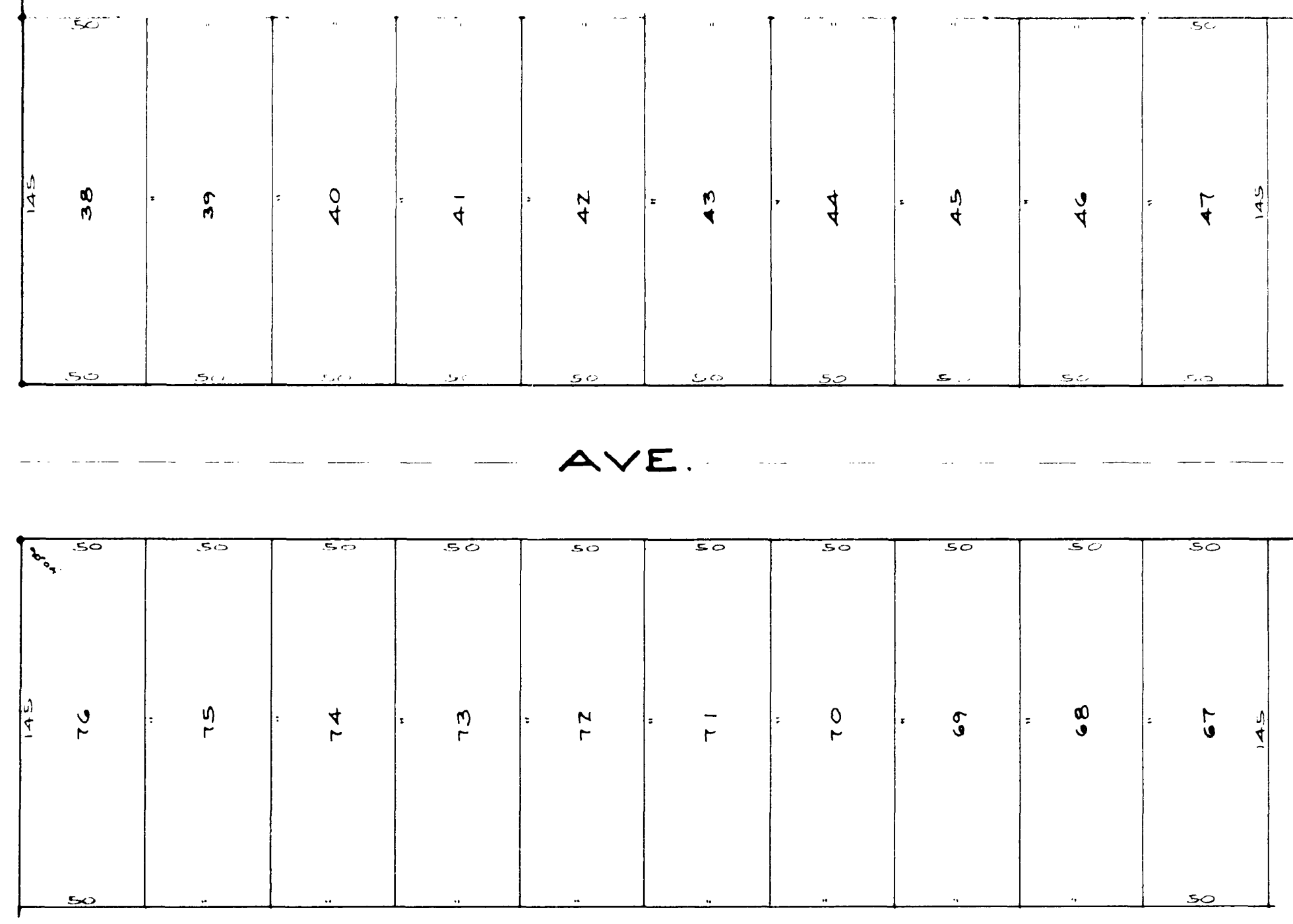


BERNARD

ST. 50'

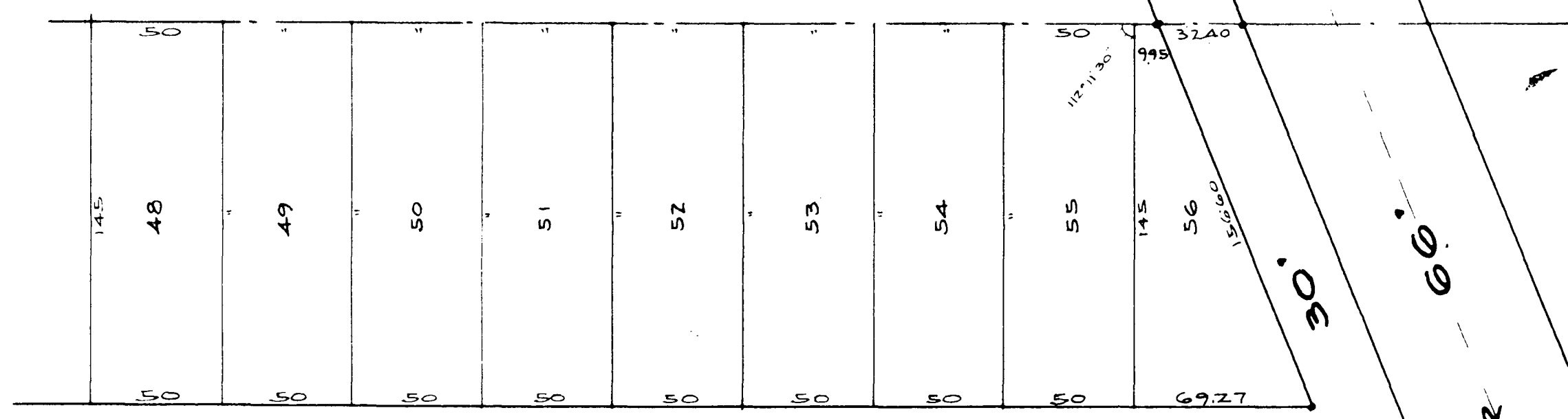
HADAWAY

AVE.



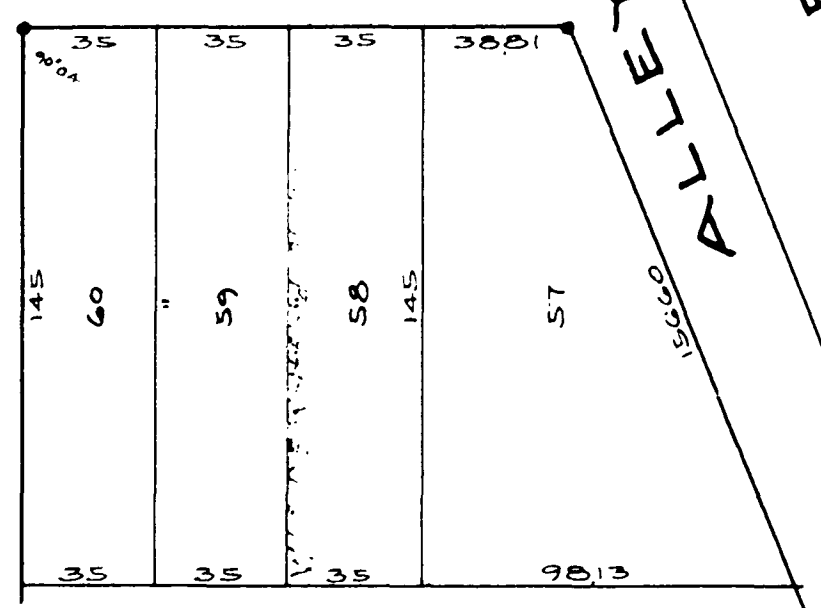
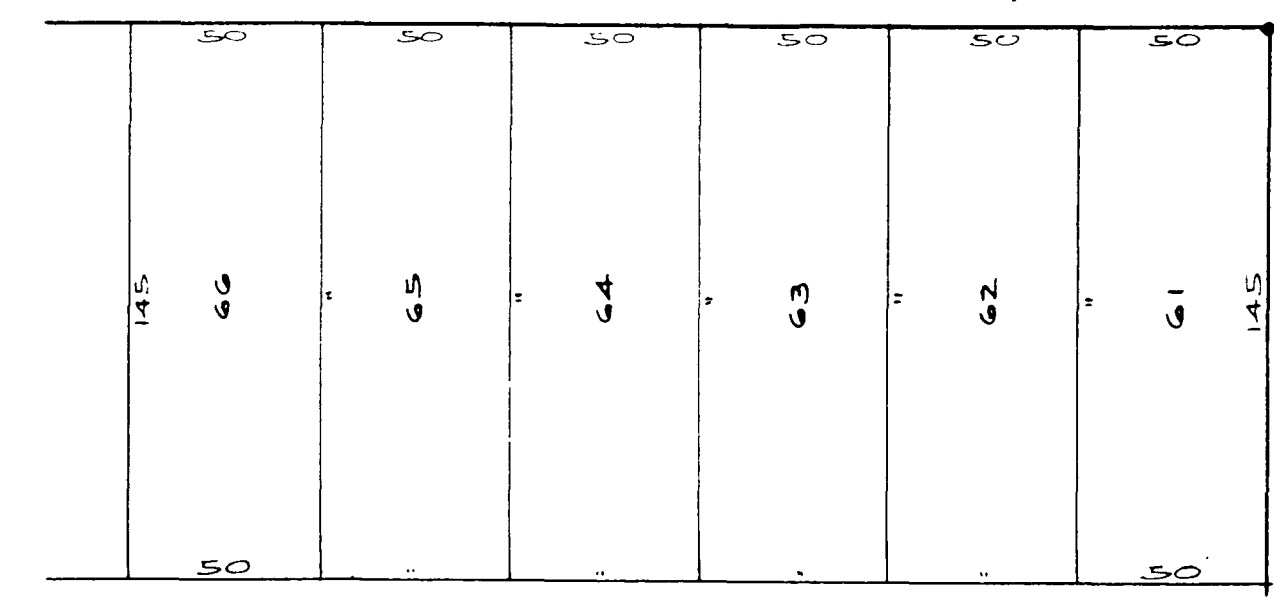
Vacated 3/29-32 File No 224046  
 Rosemeade Farms Vol. 13 Pg 20  
 Lots in blank:- Rosemeade Farms Inc.  
 Attention: Deed by Adm. 7-30-32  
 115 S. High St. Akron, Ohio  
 Nelson R. Mildred C. Weikel 3/29-32

8



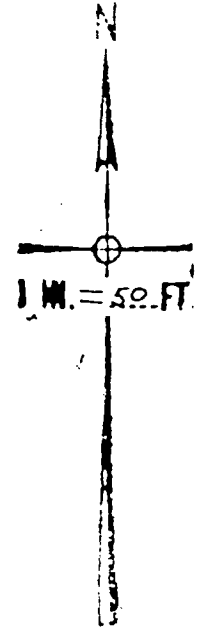
60'

GETZ ST. 50'



ALLEY

B. & O. R.



MAP OF  
 CARLISLE TOWNSHIP

COPYRIGHT 1962  
 U.S. CODE, TITLE 17  
 LORAIN COUNTY, OHIO  
 Reproduced by,  
 Allied Microfilm Corp.  
 Akron, Ohio