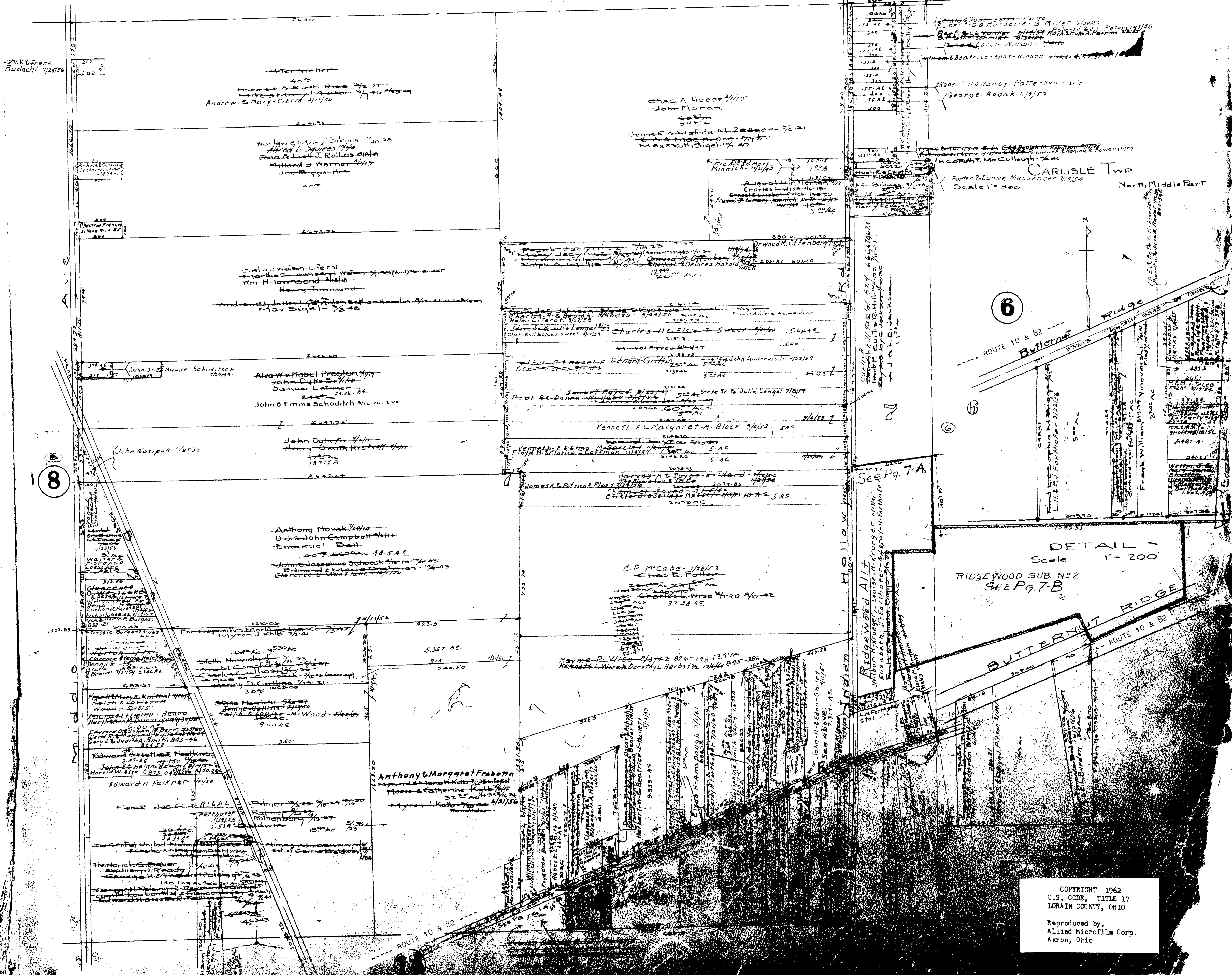
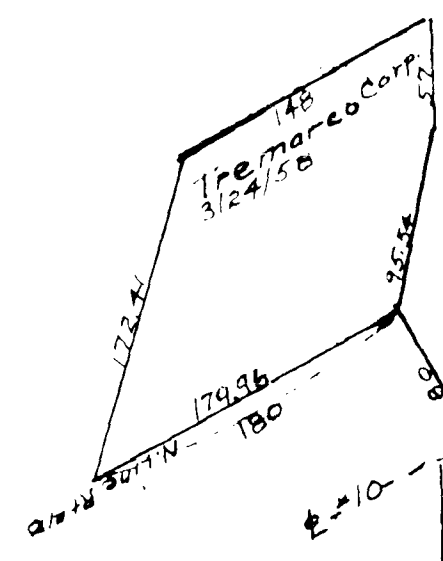


MAP OF CARLISLE TOWNSHIP

4

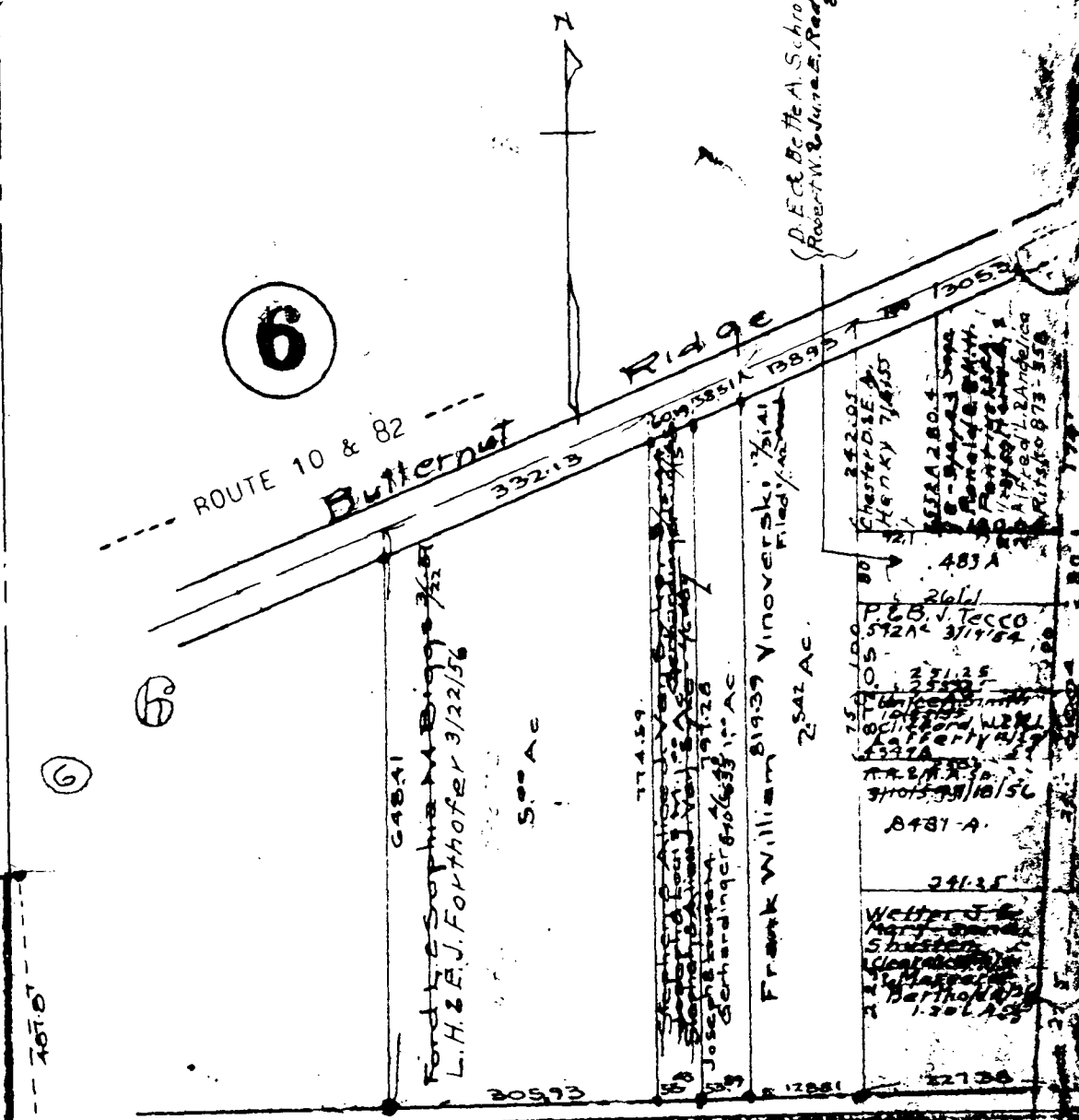
7



WARDUN ROAD

Robert H. Nancy - Patterson - 5/3/52
George Rodak 4/9/52

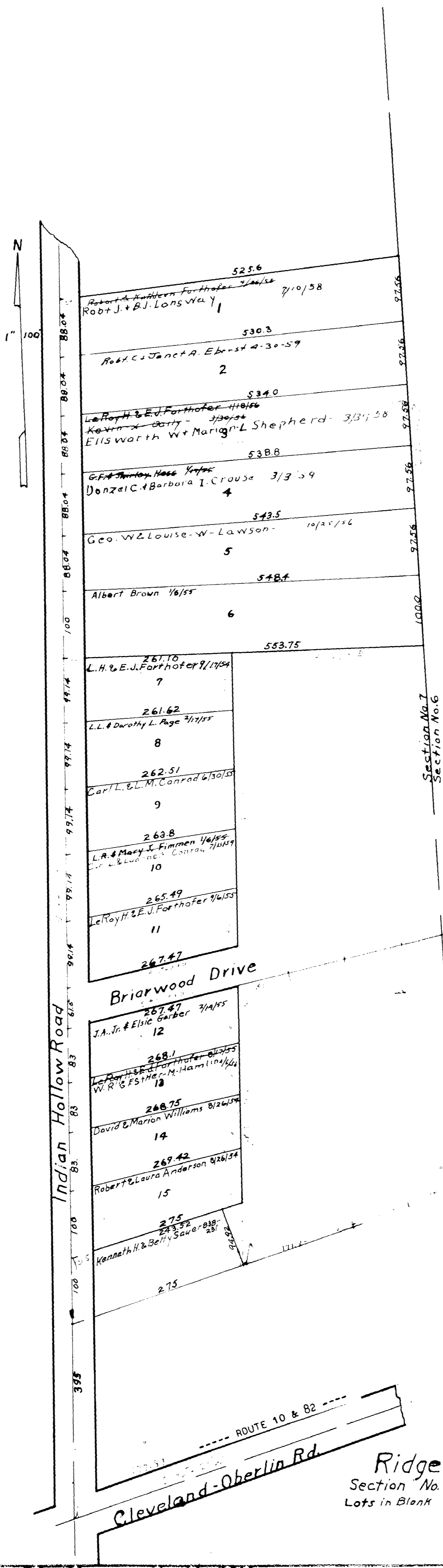
Porter & Eunice Messenger 7/4/54
Scale 1" = 300'



DETAIL -
Scale 1" = 200'
RIDGEWOOD SUB. NO. 2
SEE Pg. 7-B

COPYRIGHT 1962
U.S. CODE, TITLE 17
LORAIN COUNTY, OHIO
Reproduced by,
Allied Microfilm Corp.
Akron, Ohio

42



MAP OF
CARLISLE TOWNSHIP

COPYRIGHT 1962
U.S. CODE, TITLE 17
LORAIN COUNTY, OHIO
Reproduced by,
Allied Microfilm Corp.
Akron, Ohio

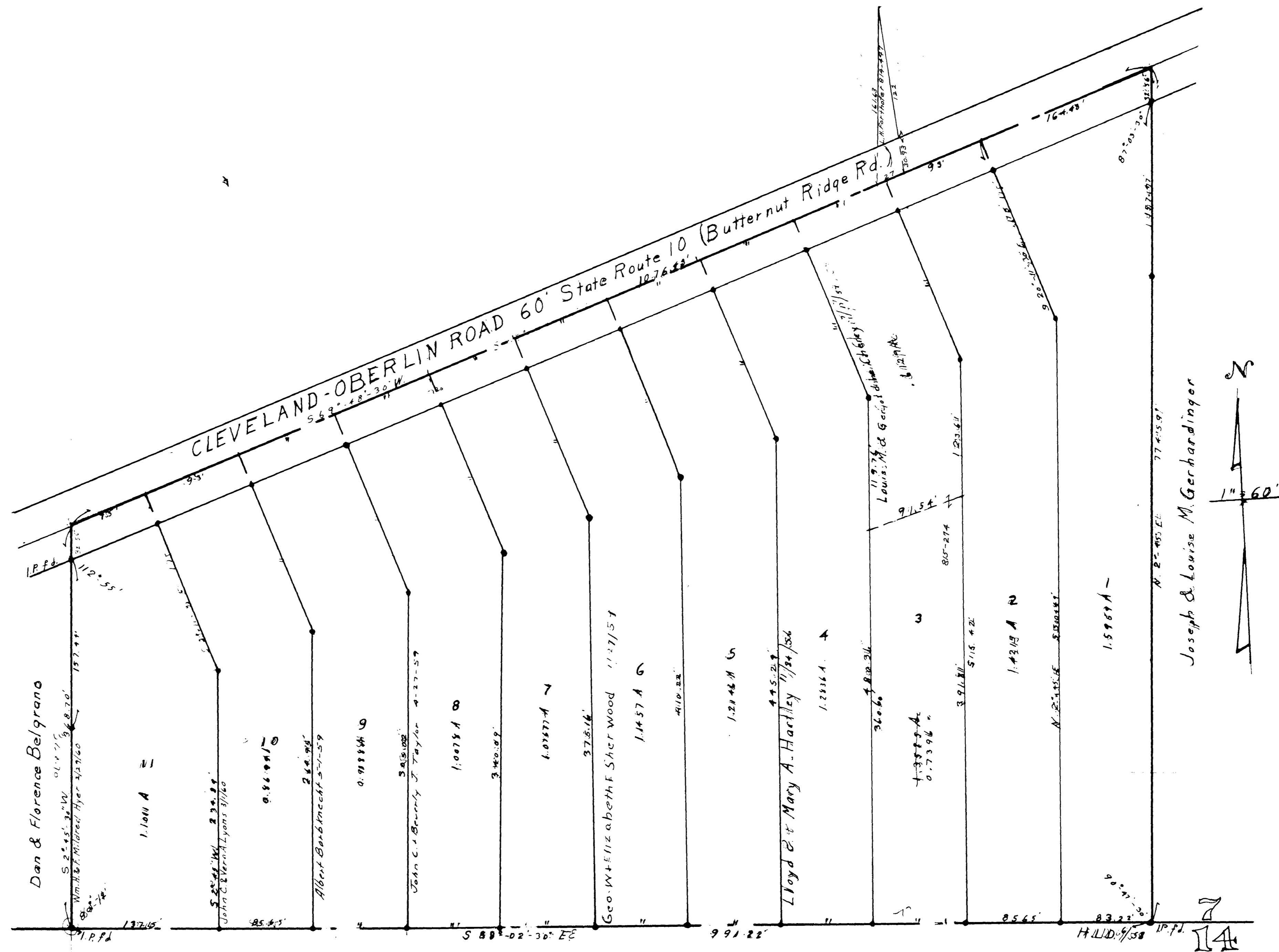
Ridgewood Allt.
Section No. 7 Vol. 17 Pg. 3
Lots in Blank Leroy H. Forthofer et al



MAP OF
CARLISLE TOWNSHIP

COPYRIGHT 1962
U.S. CODE, TITLE 17
LORAIN COUNTY, OHIO
Reproduced by,
Allied Microfilm Corp.
Akron, Ohio

RIDGEWOOD SUBDIVISION NO. 2.
PARTS OF SECTIONS 6 & 7.
CARLISLE TOWNSHIP.
Lots in Blank; Le Roy H. Forthofer, et al.
PLAT VOL. 18, Pg. 8.
23.538 Ac. in Sec. 6, & 9.503 Ac. in Sec. 7.



MAP OF
CARLISLE TOWNSHIP

LeROY FORTHOFFER SUB. NO. 1.
PART OF SEC. 7, CARLISLE TWP.
VOL. 19, Pg. 2-A
Lots in Blank: LeRoy H. Forthofer

COPYRIGHT 1962
U.S. CODE, TITLE 17
LORAIN COUNTY, OHIO
Reproduced by,
Allied Microfilm Corp.
Akron, Ohio