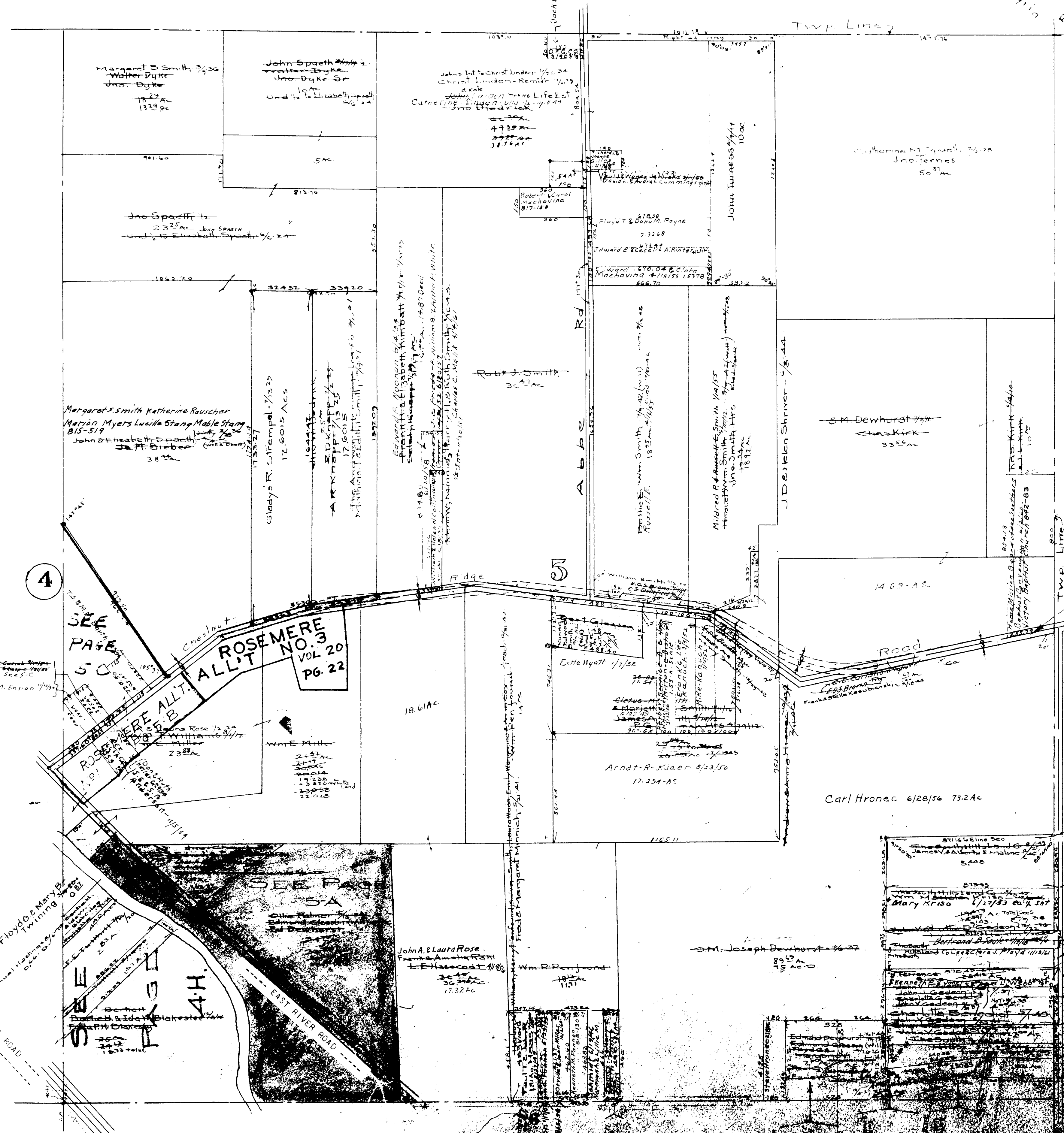


Elyria Ridgeville Eaton



CARLISLE TWP Scale 1"=300 NE Corner

For alteration of Chestnut Ridge Rd Sec Road Rec. 473-474-475 as shown in yellow tint

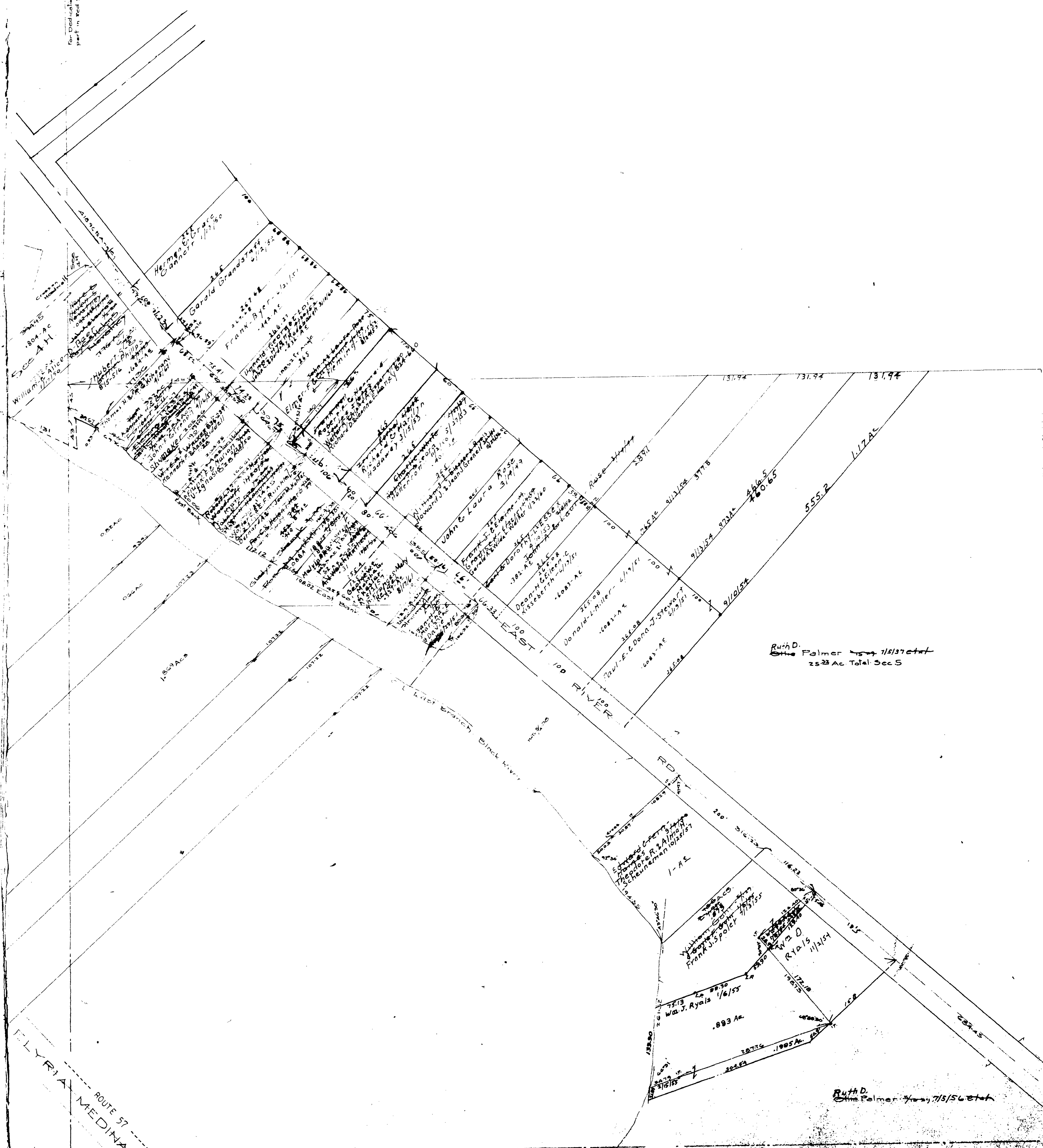
EATON TWP. PAGES 7 & 8

MAP OF CARLISLE TOWNSHIP

6

COPYRIGHT 1962 U.S. CODE, TITLE 17 LORAIN COUNTY, OHIO Reproduced by Allied Microfilm Corp. Akron, Ohio

For Dedication of this
part in West see Act No. 179-14



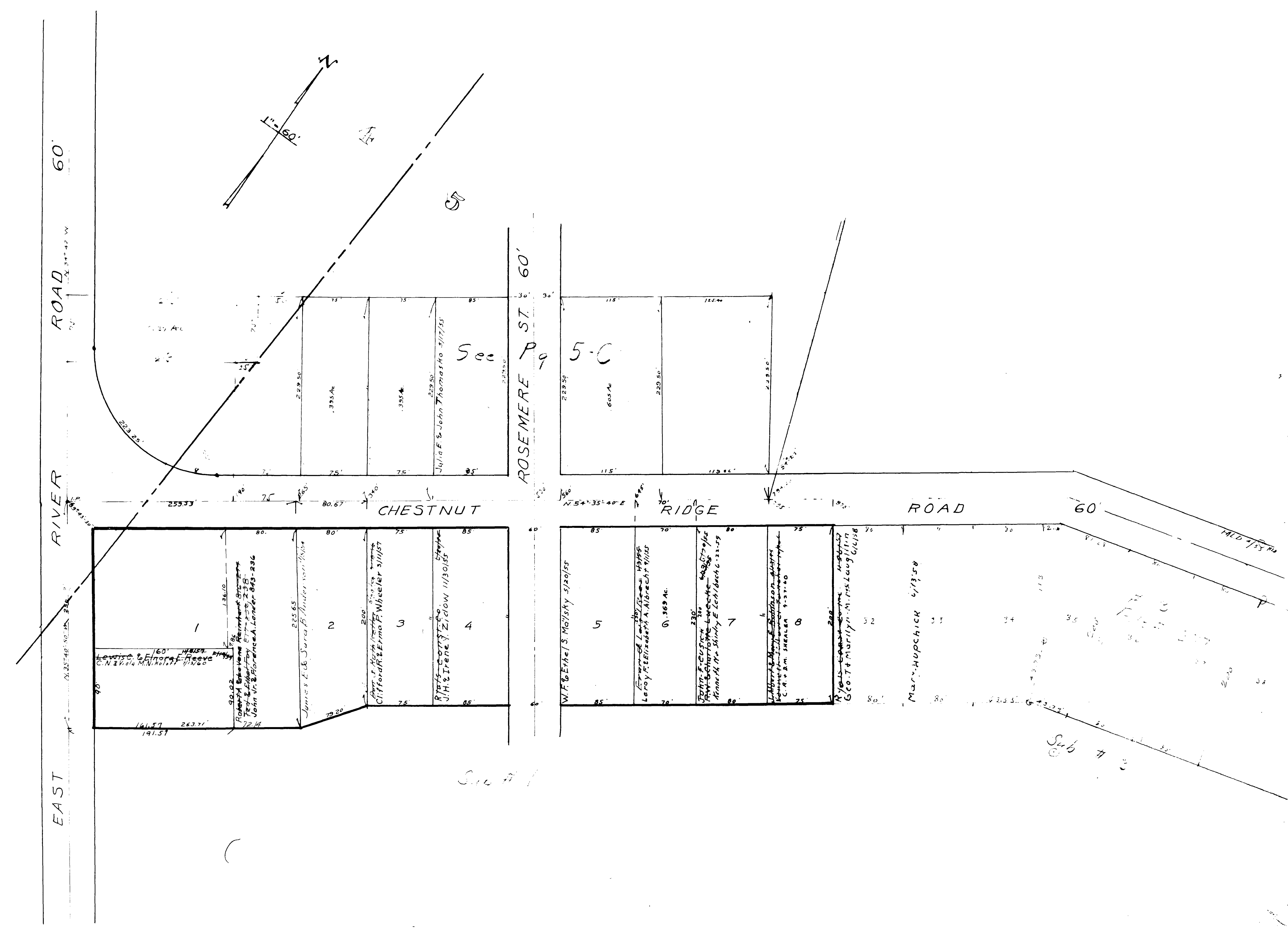
1" = 100'

Ruth D. Palmer 7/15/57 et al
25.23 Ac Total Sec 5

Ruth D. Palmer 7/15/56 et al

MAP OF
CARLISLE TOWNSHIP

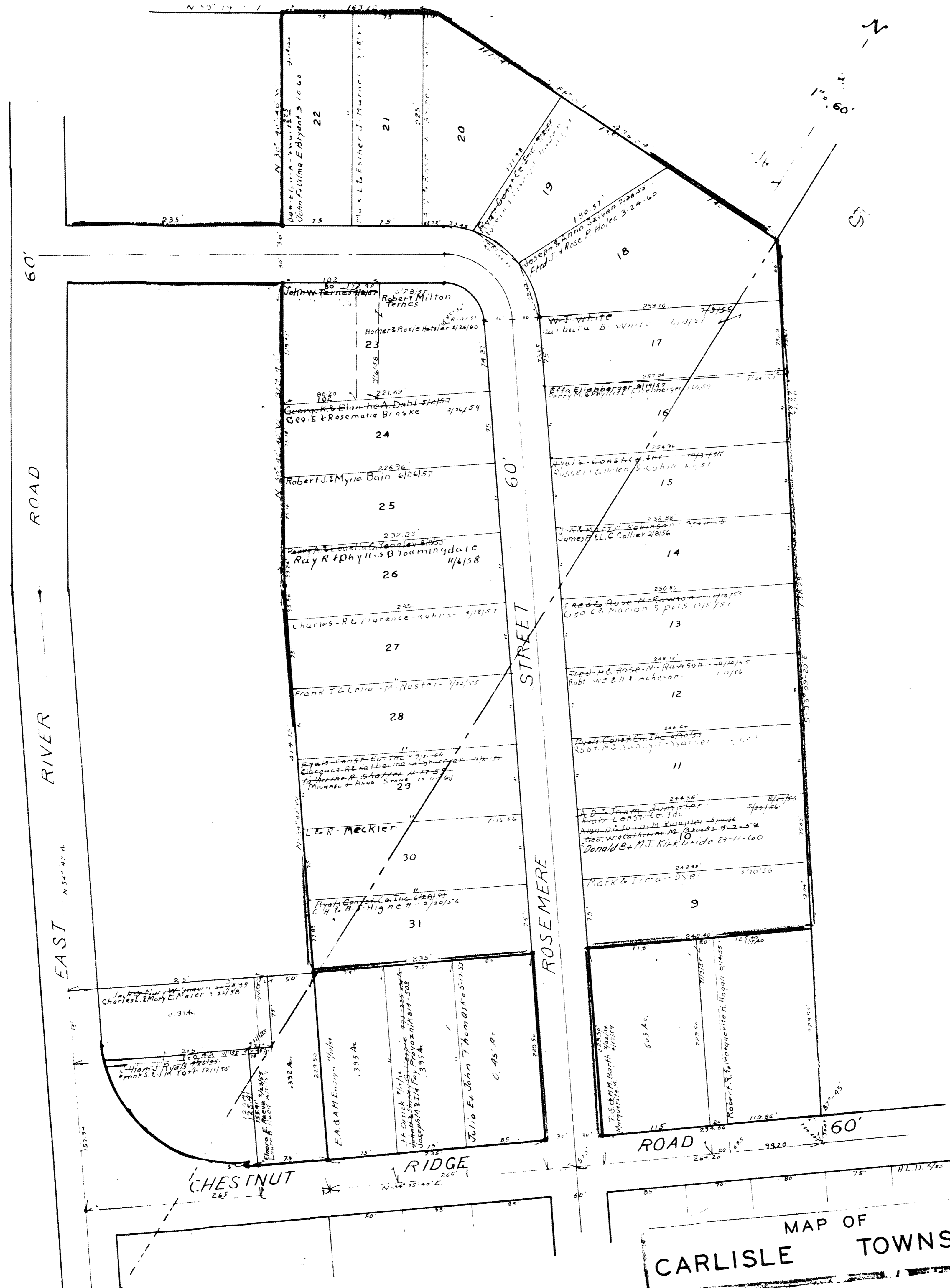
COPYRIGHT 1962
U.S. CODE, TITLE 17
LORAIN COUNTY, OHIO
Reproduced by,
Allied Microfilm Corp.
Akron, Ohio



ROSEMERE ALLOTMENT No. 1
 CARLISLE TOWNSHIP
 Lots in Blank: John Rose et al.
 PLAT Vol. 17, Pg. 29.

MAP OF
 CARLISLE TOWNSHIP

COPYRIGHT 1962
 U.S. CODE, TITLE 17
 LORAIN COUNTY, OHIO
 Reproduced by,
 Allied Microfilm Corp.
 Akron, Ohio



COPYRIGHT 1962
 U.S. CODE, TITLE 17
 LORAIN COUNTY, OHIO
 Reproduced by,
 Allied Microfilm Corp.
 Akron, Ohio

ROSEMERE ALLOT. No 2.
 CARLISLE, TWP.
 Lots in Blank: John Rose et al.
 PLAT VOL. 17, PG. 43

MAP OF
 CARLISLE TOWNSHIP