

PAGE 2

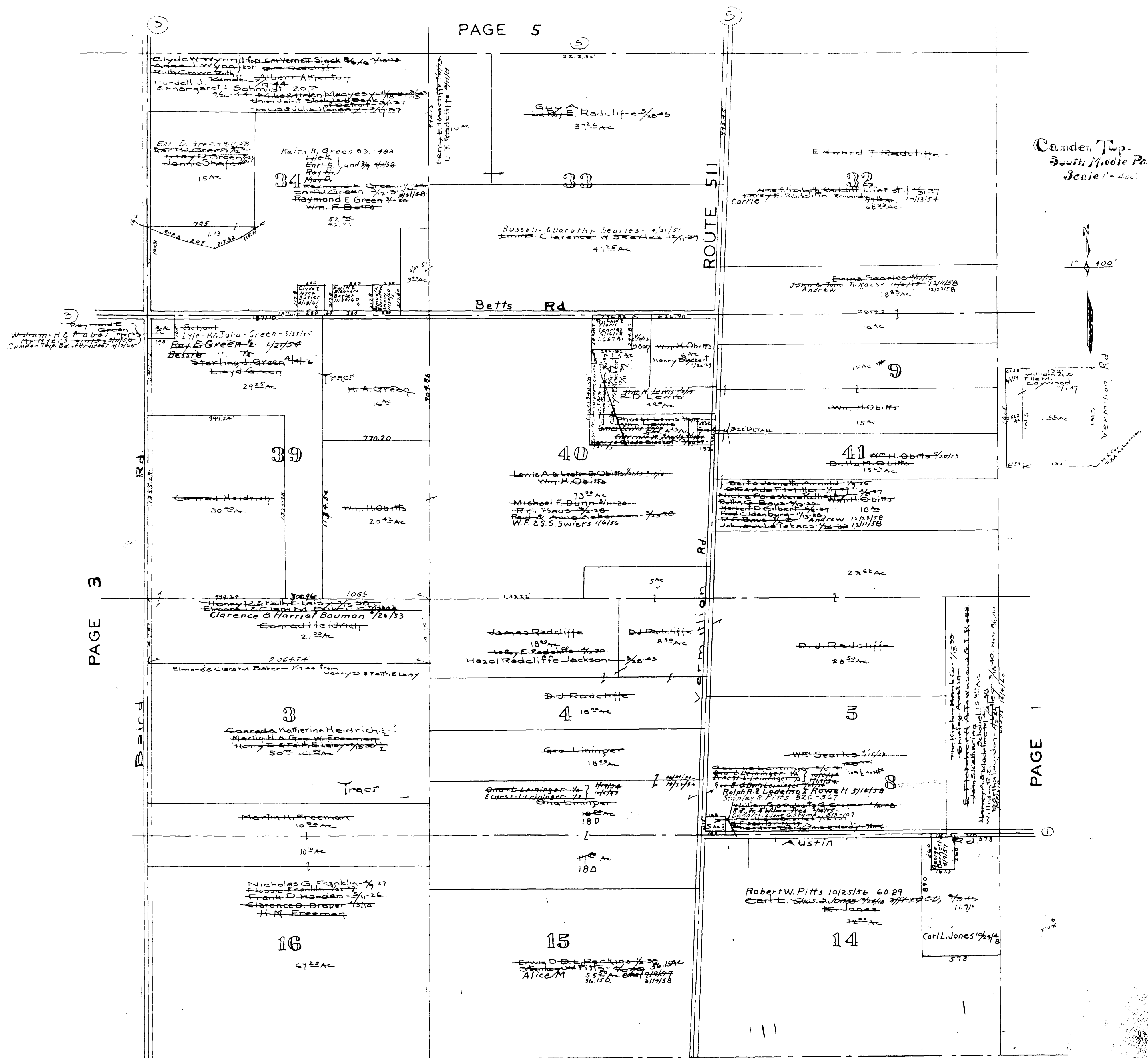
PITTSFIELD TWP. PAGE 7+5

COPYRIGHT 1962  
U.S. CODE, TITLE 17  
LORAIN COUNTY, OHIO  
Reproduced by,  
Allied Microfilm Corp.  
Akron, Ohio

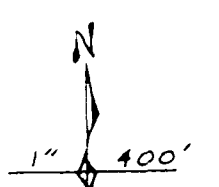
MAP OF  
CAMDEN TOWNSHIP

Town 14

1



Camden Twp.  
South Middle Part  
Scale 1" = 400'



Vermilion Rd

PAGE 3

PAGE 1

BRIGHTON TWP PAGE 2

W.A. Köchis - Lorain - 8-10-1967

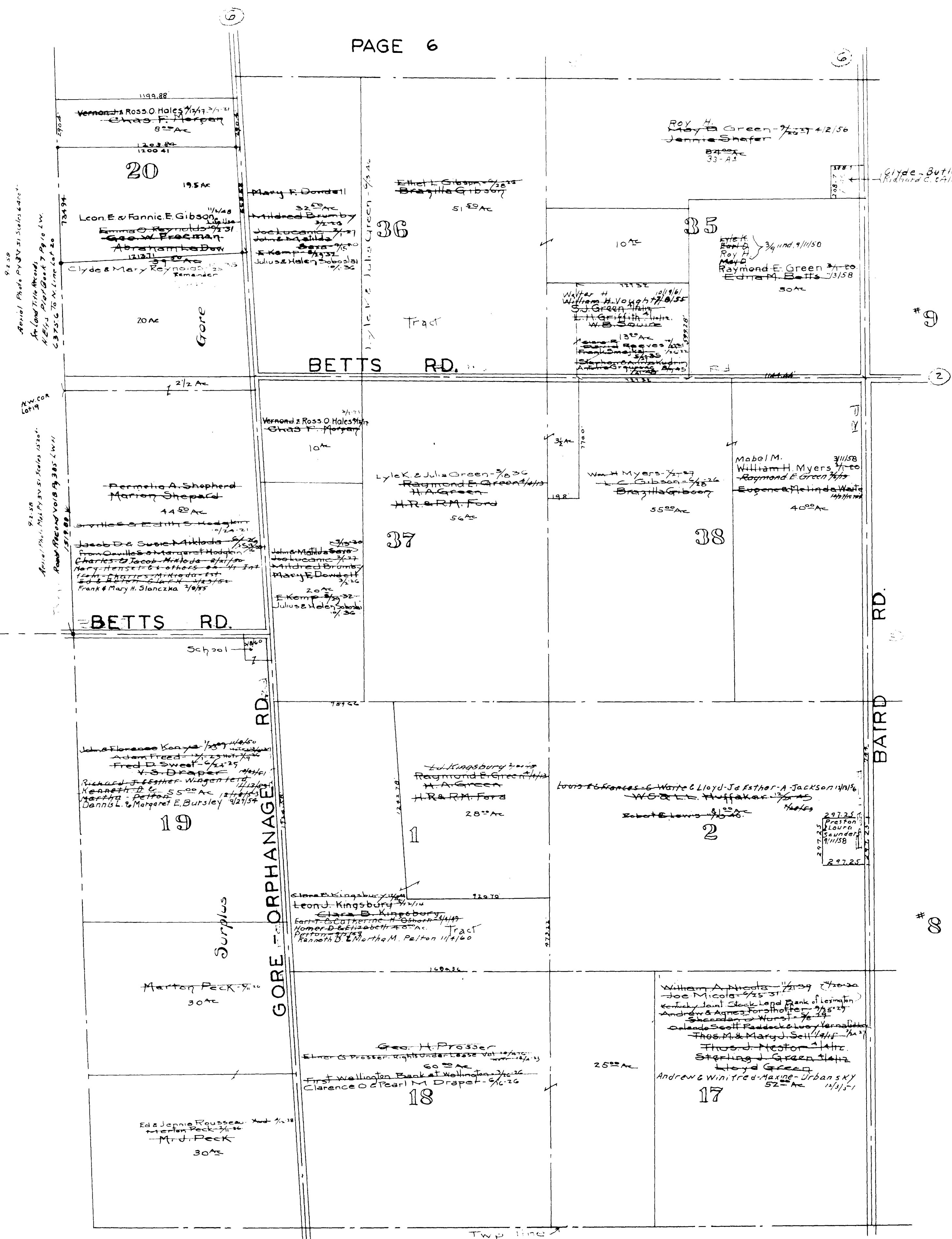
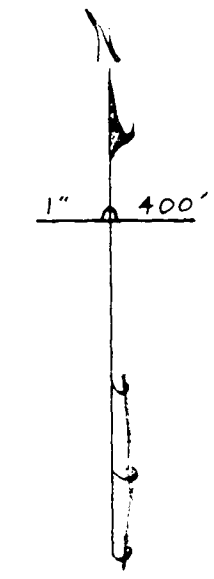
COPYRIGHT 1962  
U.S. CODE, TITLE 17  
LORAIN COUNTY, OHIO  
Reproduced by  
Allied Microfilm Corp.  
Akron, Ohio

MAP OF  
CAMDEN TOWNSHIP

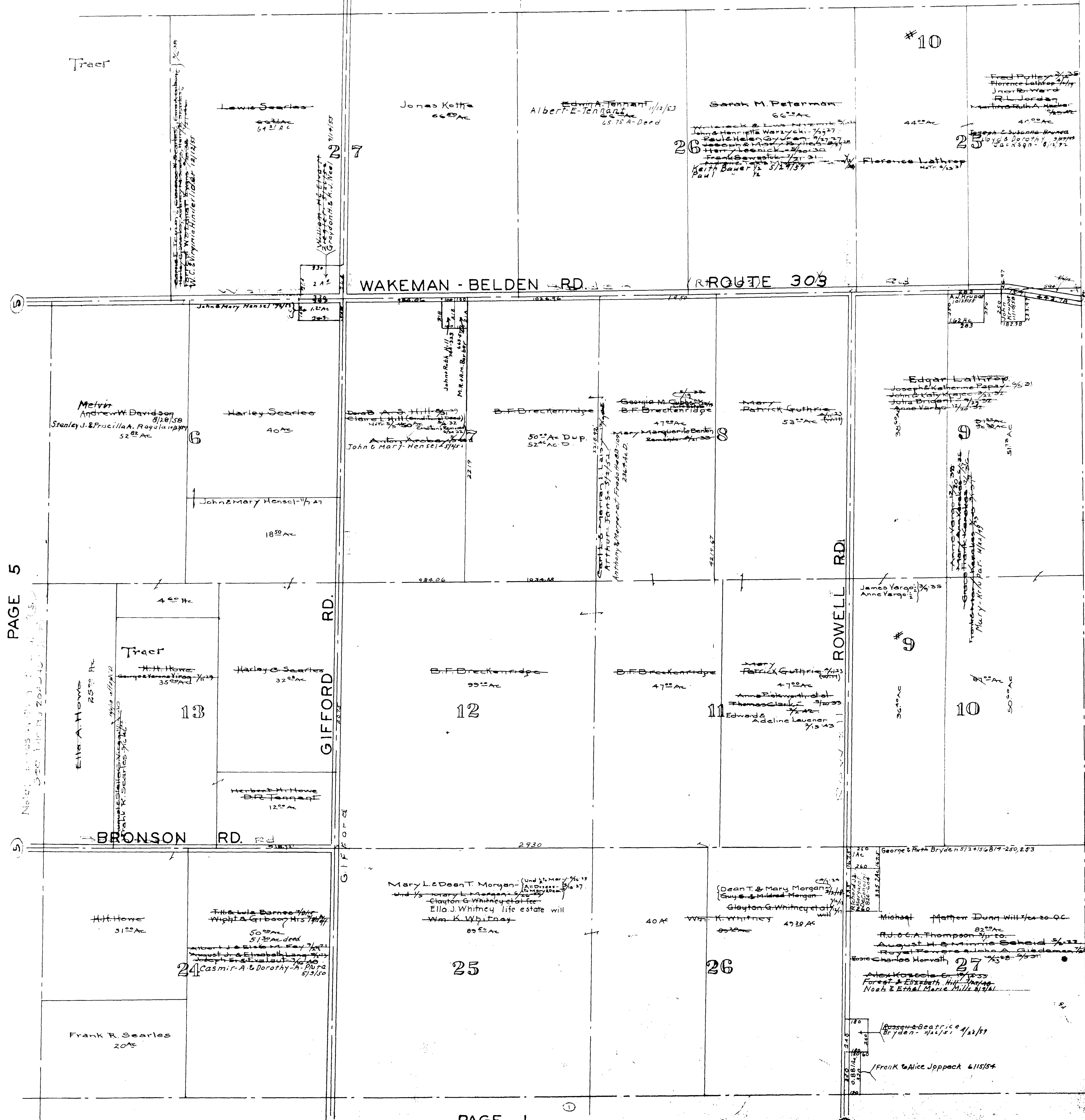
HURON COUNTY  
WAKEMAN TWP.

HURON COUNTY  
CLARKSFIELD TWP.

CAMDEN TWP.  
South West Corner  
Scale 1"=400'



COPYRIGHT 1962  
U.S. CODE, TITLE 17  
LORAIN COUNTY, OHIO  
Reproduced by,  
Allied Microfilm Corp.  
Akron, Ohio



CAMDEN TWP.  
East Middle  
Scale 1"=400'

PITTSFIELD TWP PAGES 4+5

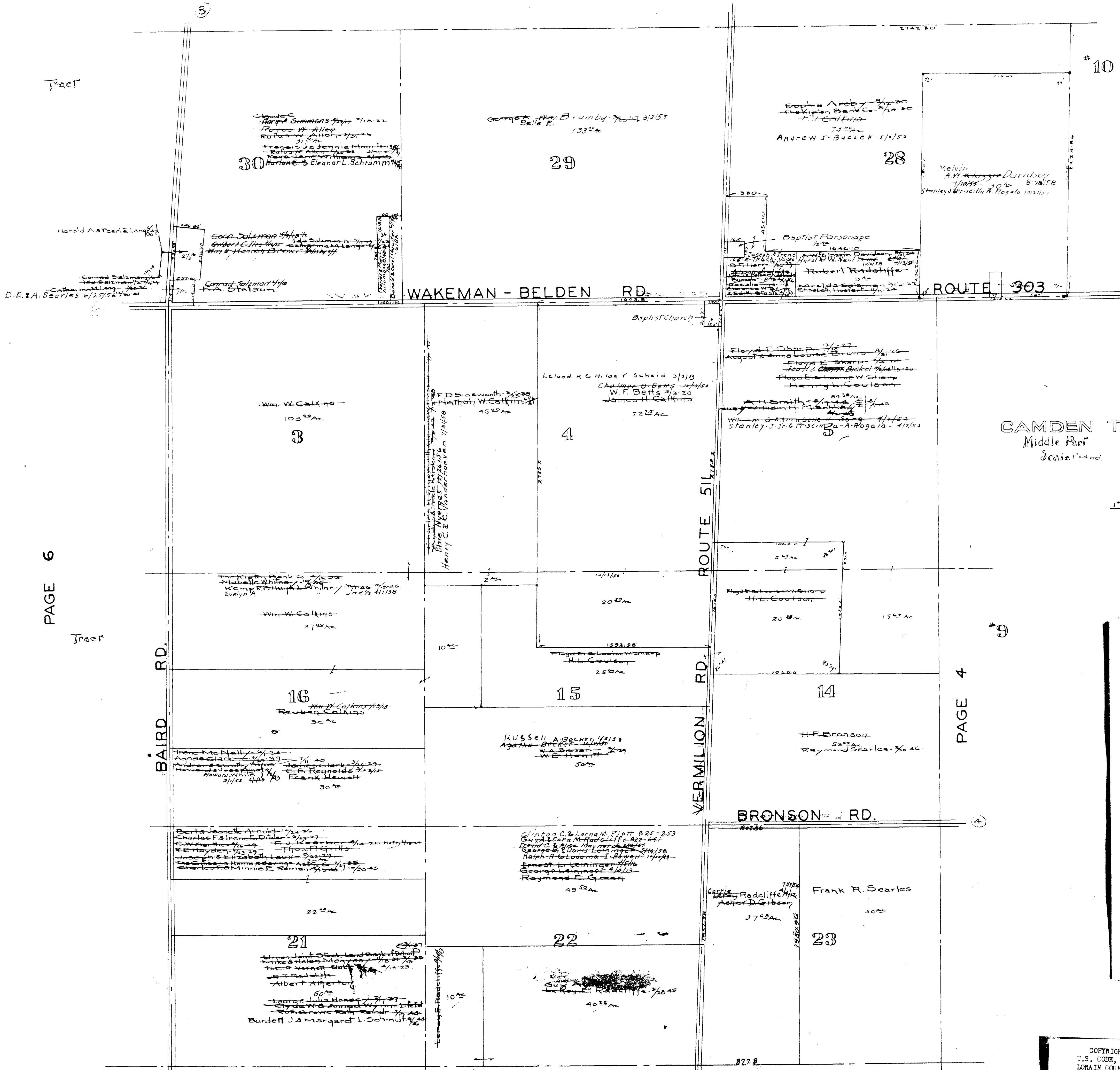
COPYRIGHT 1962  
U.S. CODE, TITLE 17  
LOHAIN COUNTY, OHIO  
Reproduced by  
Allied Microfilm Corp.  
Akron, Ohio

MAP OF  
CAMDEN TOWNSHIP

PAGE 5

Note: ...

George & Ruth Bryden 5/24/52 8/7-250,253  
Michael Matthew Dunn Will 1/20/50  
R.D.C.A. Thompson  
August H. & M. M. Scheld 5/12  
Royal Powers & John A. Giedeman  
Roy Charles Herath  
Alex. Kosciela  
Forest & Elizabeth Hill  
Nash & Ethel Marie Mills  
Gosson & Beatrice  
Bryden 4/15/51  
Frank & Alice Jppack 6/15/54



PAGE 6

PAGE 4

COPYRIGHT 1962  
U.S. CODE, TITLE 17  
LORAIN COUNTY, OHIO

Reproduced by  
Allied Microfilm Corp.  
Akron, Ohio

MAP OF  
CAMDEN TOWNSHIP

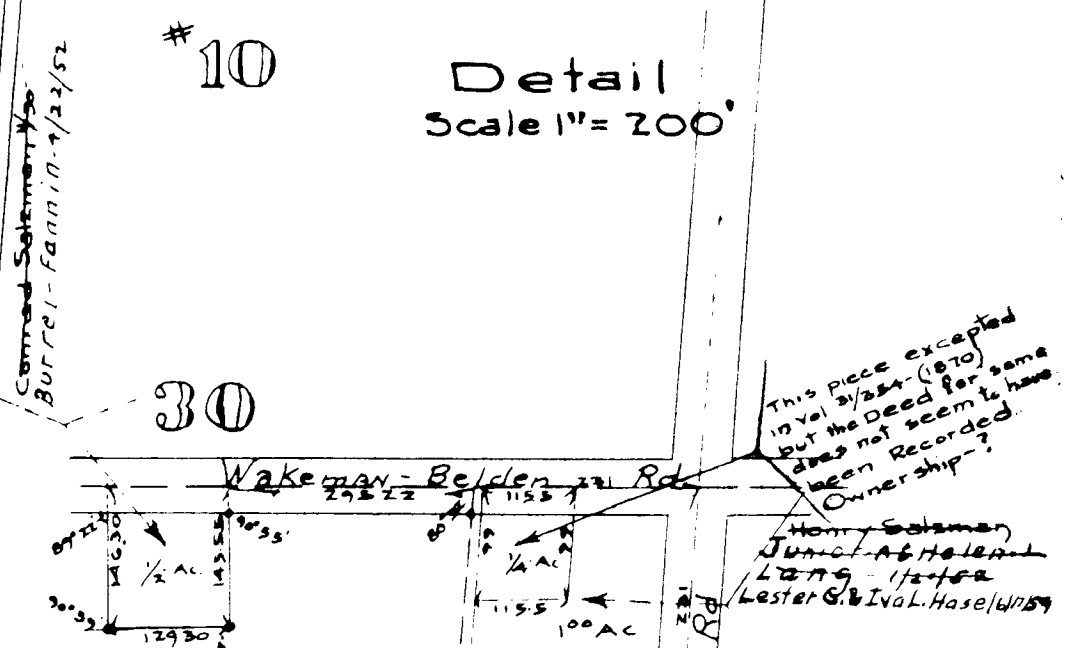
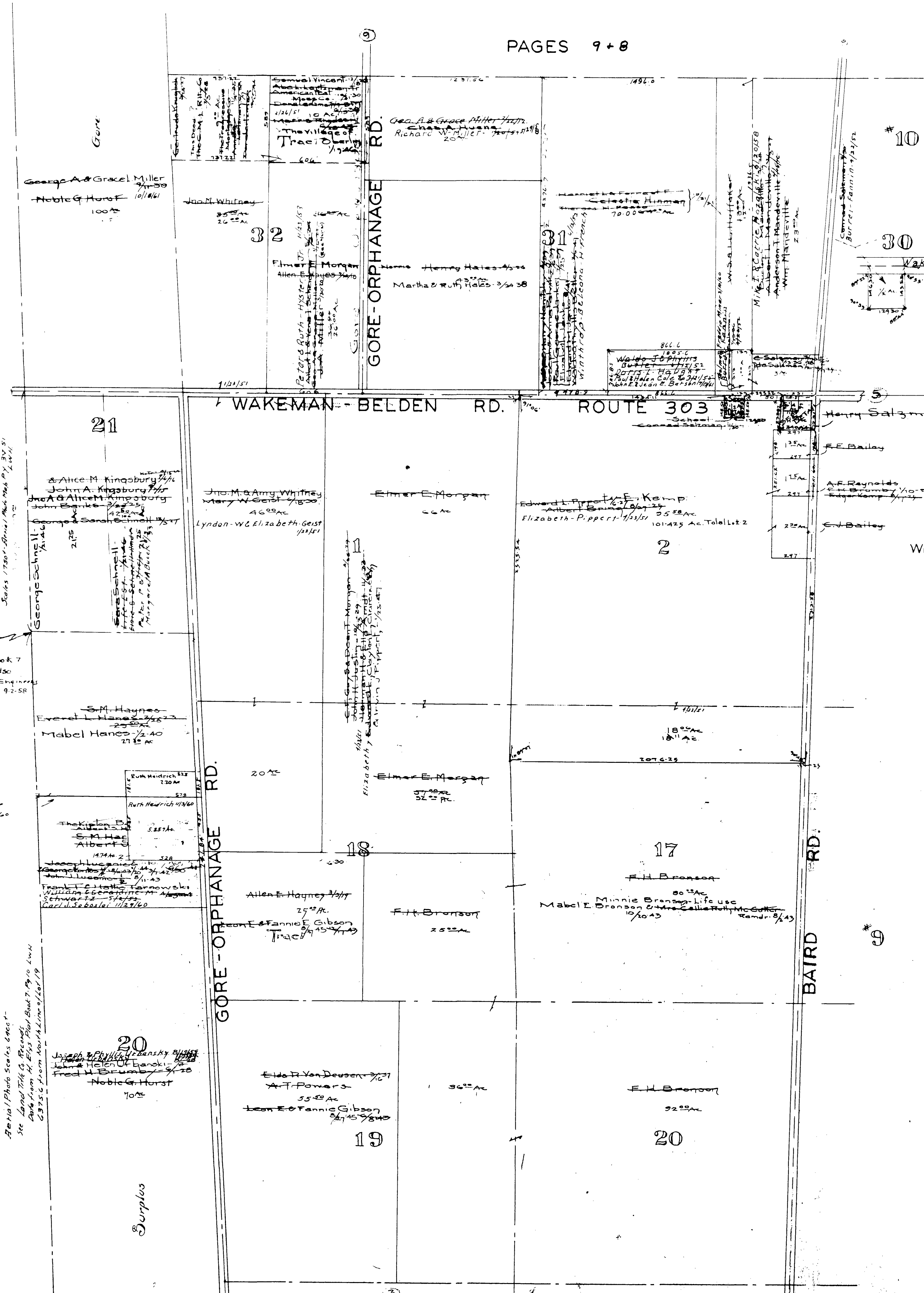
HURON COUNTY  
WAKEMAN TWP.

Aerial Photo scales exact -  
See Land Title Co. Records  
Data from M. Elys Plat Book 7, Pg 10 LWH  
2,975.0 from North Line of Lot 19

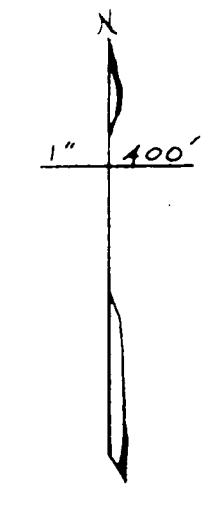
Formerly shown as the North Lot Line  
of Lot 20 Gore Slab, Contained 10-28-60  
LWH

CORRECTED LWH  
Lot line established by  
Rd Rec 2 Pg 385 along  
with Herman Elys Plat Book 7  
By Plat Book Land Title Co office also  
Confirmed by Lorain County Engineers  
Serial Photo Map Pk 3V-51-92-58  
LWH

Scale 1750' Serial Photo Pk 3V-51-92-58



Camden Twp.  
West Middle Part.  
Scale 1" = 400'

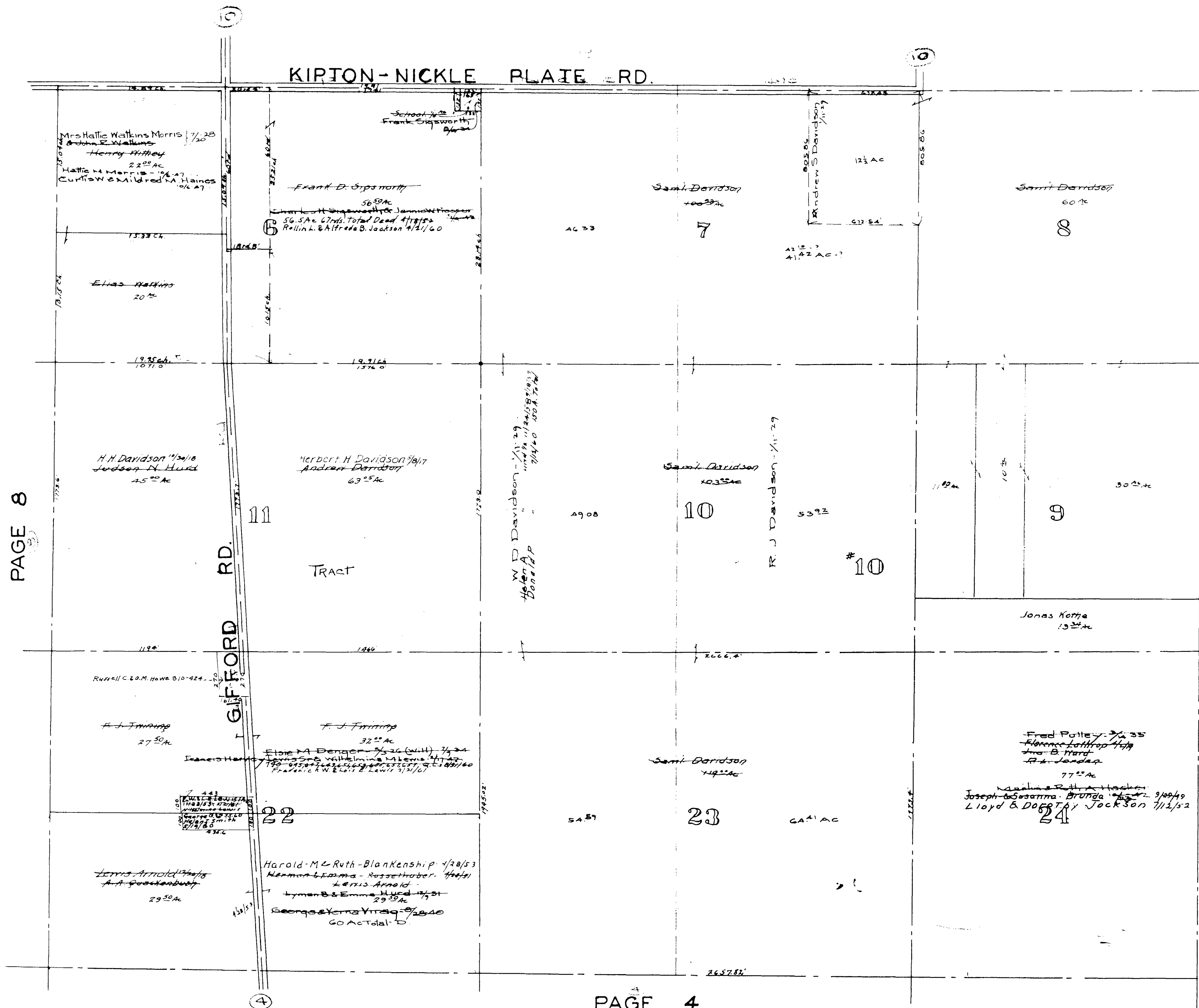


PAGE 5

COPYRIGHT 1962  
U.S. CODE, TITLE 17  
LORAIN COUNTY, OHIO

Reproduced by,  
Allied Microfilm Corp.  
Akron, Ohio

MAP OF  
CAMDEN TOWNSHIP

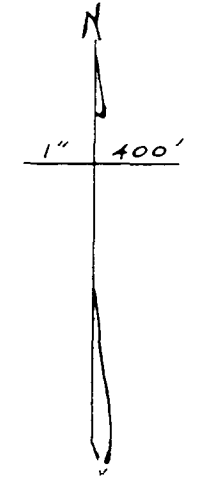


PAGE 8

PAGE 4

PAGES 4 + 1  
PITTSFIELD TWP.

CAMDEN TWP  
EAST MIDDLE  
Scale 1" = 100'

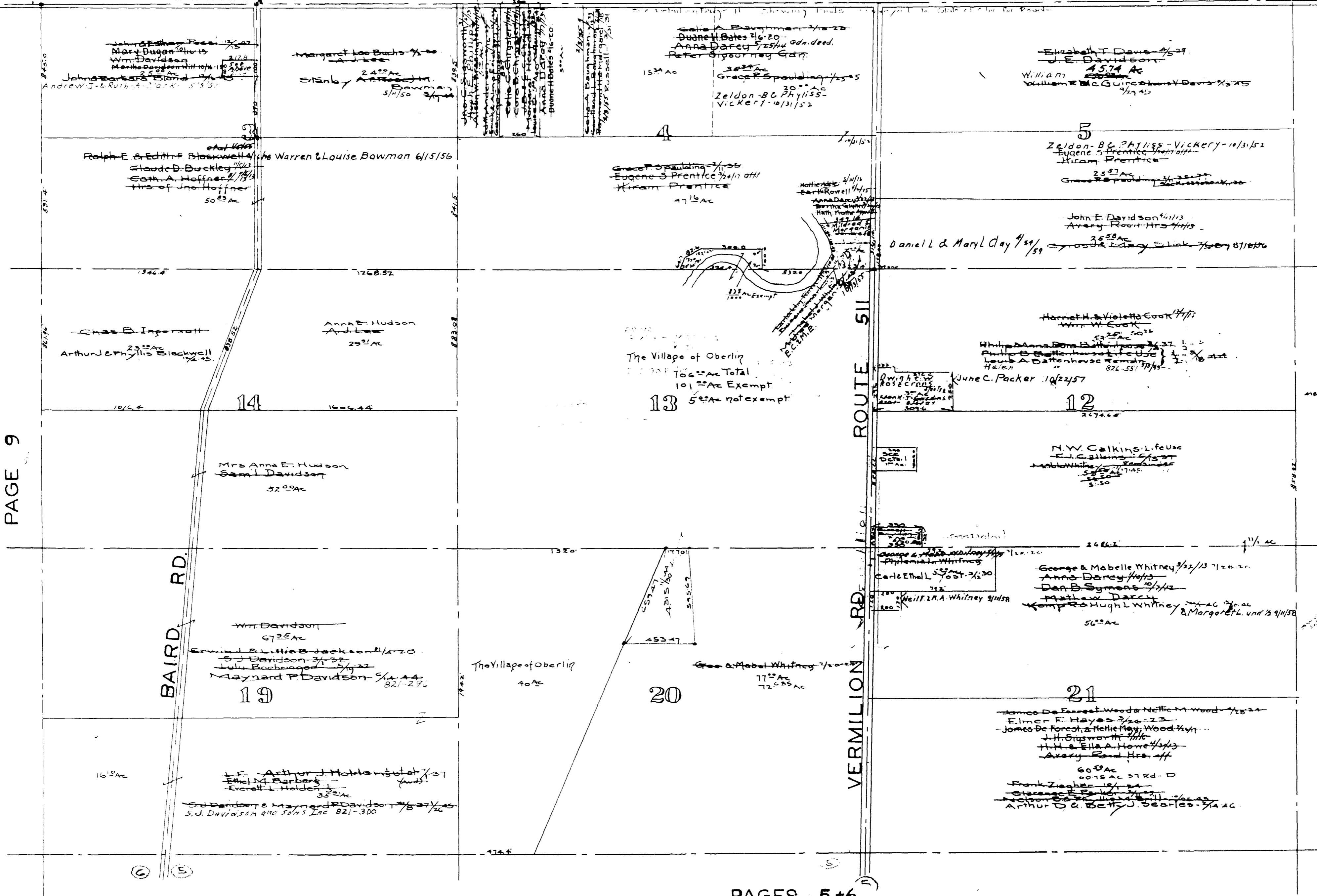


COPYRIGHT 1962  
U.S. CODE, TITLE 17  
LORAIN COUNTY, OHIO  
Reproduced by,  
Allied Microfilm Corp.  
Akron, Ohio

MAP OF  
CAMDEN TOWNSHIP

OBERLIN - NORWALK RD. US. 20 KIPTON - NICKLE PLATE RD. US. 20

CAMDEN TWR  
North Central Part  
Scale 1" = 400'



PAGE 9

PAGE 7

PAGES 5+6

COPYRIGHT 1962  
U.S. CODE, TITLE 17  
LORAIN COUNTY, OHIO

Reproduced by,  
Allied Microfilm Corp.  
Akron, Ohio

MAP OF  
CAMDEN TOWNSHIP

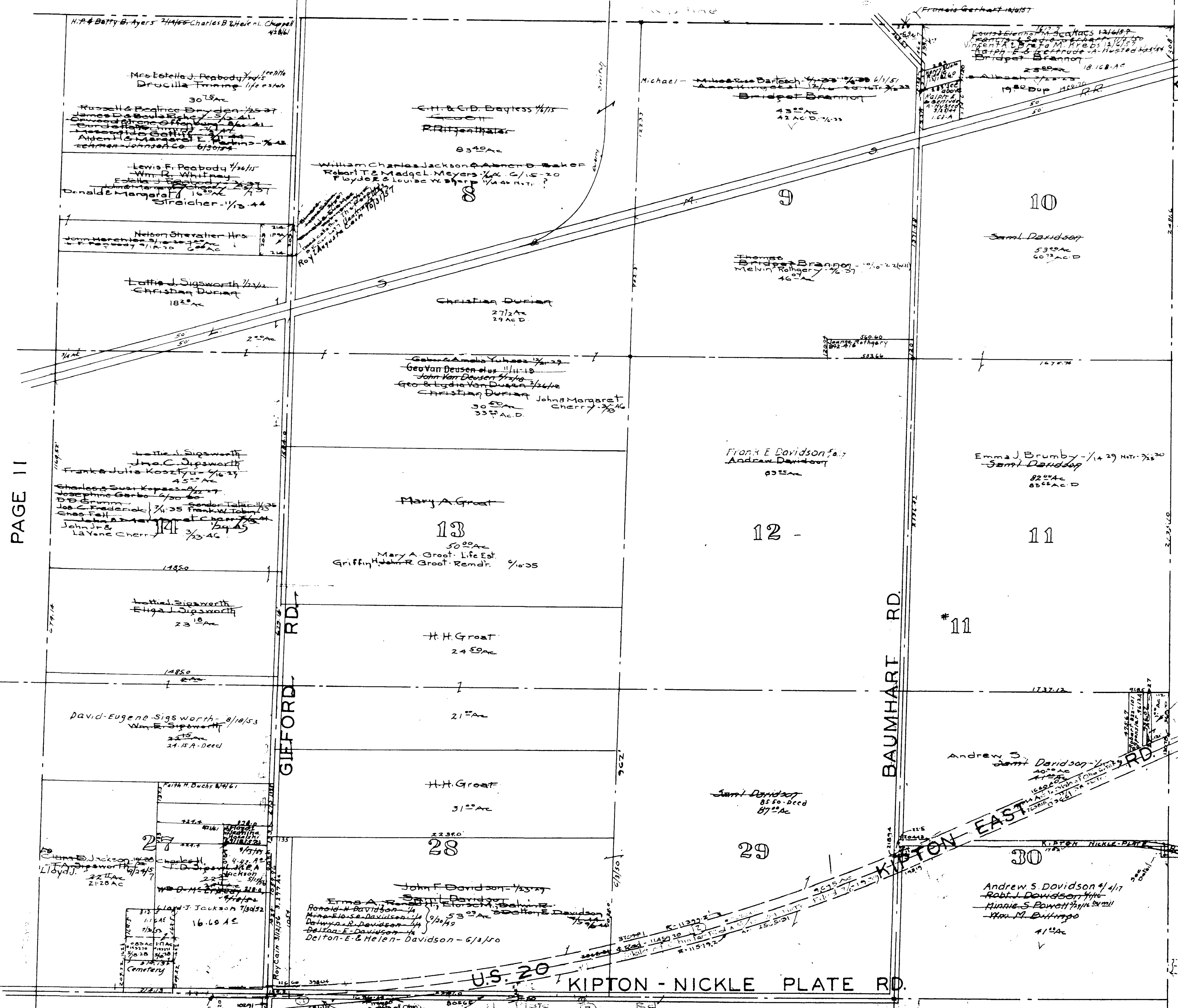




HENRIETTA TWP PAGES 8+9

RUSSIA TWP PAGE 13

Camden Twp. North East Corner Scale 1"=400'



PAGE 11

Tract

RITTSFIELD TWP PAGE 12

27	29.32	12	69.32
28	12.77	11	65.74
29	32.87	10	32.87
30	32.87	9	32.87
31	32.87	8	32.87
32	32.87	7	32.87
33	32.87	6	32.87
34	32.87	5	32.87
35	32.87	4	32.87
36	32.87	3	32.87
37	32.87	2	32.87
38	32.87	1	32.87

Work done on the road from the road to the road...  
 Hudson Spangler 8/18-24  
 Ronald A. Leach 8/18-24  
 see above stamp V. 808-60104344

PAGE 7

DETAIL Scale 1"=200'

Note For dedication of parts in  
 & Vacation of parts in Blue,  
 See Road Record 4 Pg. 432

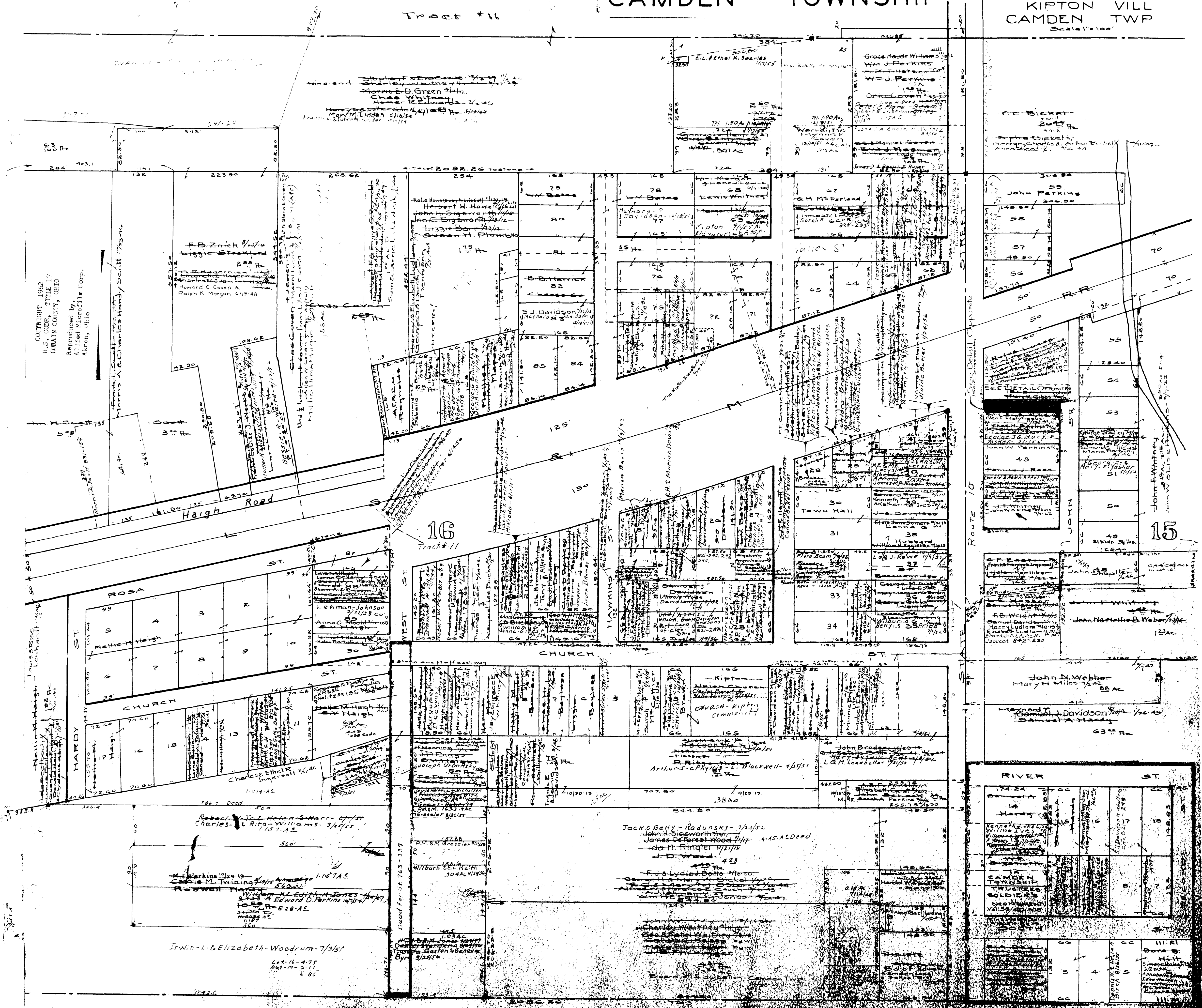
MAP OF  
 CAMDEN TOWNSHIP

COPYRIGHT 1962  
 U.S. CODE, TITLE 17  
 LORAIN COUNTY, OHIO  
 Reproduced by,  
 Allied Microfilm Corp.  
 Akron, Ohio



MAP OF  
CAMDEN TOWNSHIP

KIPTON VILL  
CAMDEN TWP  
Scale 1"=100'

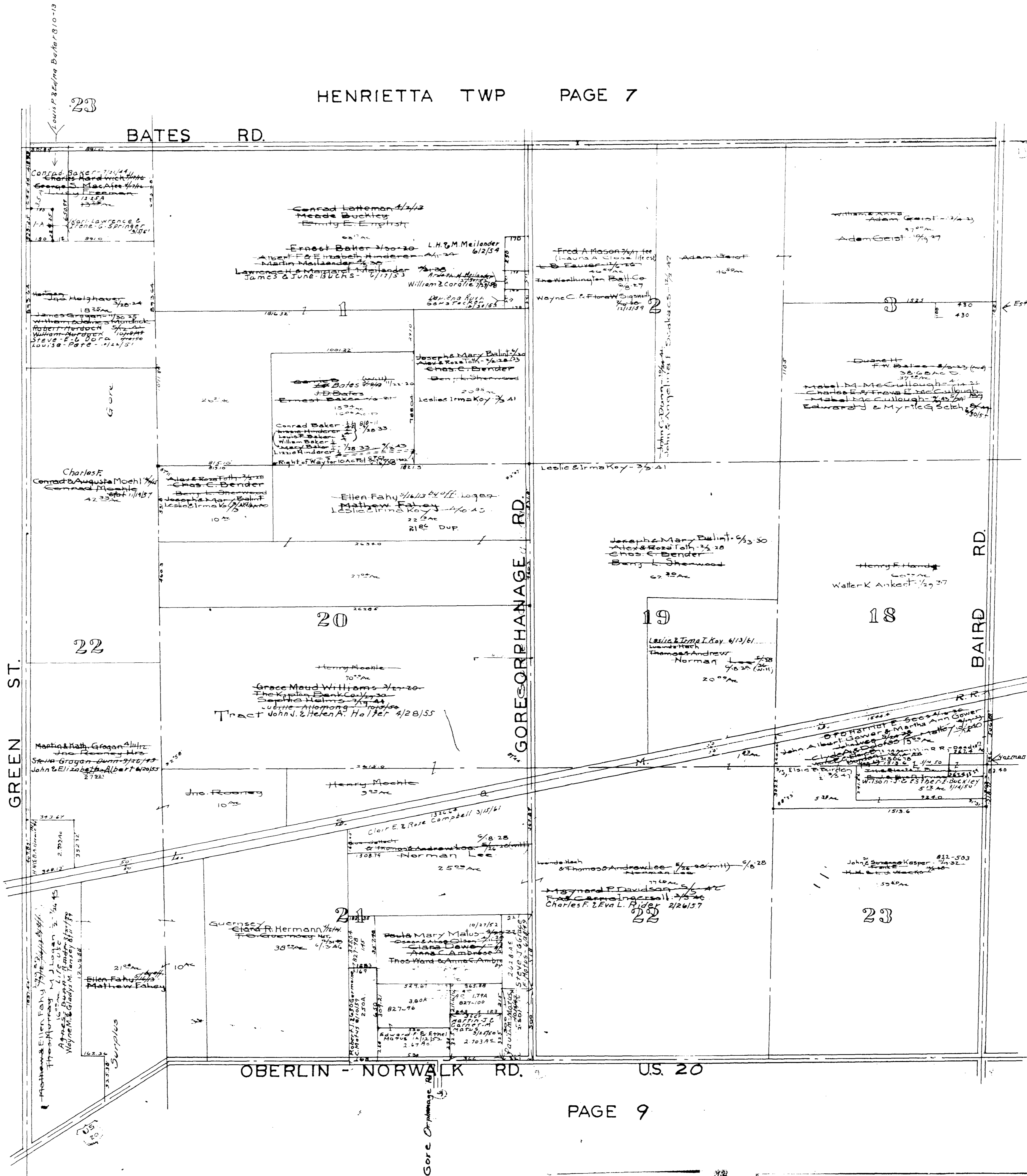


COPYRIGHT 1962  
U.S. CODE, TITLE 17  
LORAIN COUNTY, OHIO  
Reproduced by:  
Allied Microfilm Corp.  
Akron, Ohio



HENRIETTA TWP PAGE 7

HURON COUNTY WAKEMAN TWP



CAMDEN TWP. North West Corner Scale 1" = 400'

PAGE 11

PAGE 9

COPYRIGHT 1962  
 U.S. CODE, TITLE 17  
 LORAIN COUNTY, OHIO  
 Reproduced by,  
 Allied Microfilm Corp.  
 Akron, Ohio

MAP OF  
**CAMDEN TOWNSHIP**