

Brighton, Ohio
 See in East Part
 Scale 1/400'

Wallington, Ohio Page 10

See This Land Deed to the County for Record to Vol 57 Page 206 June 1915

See Wallington Twp

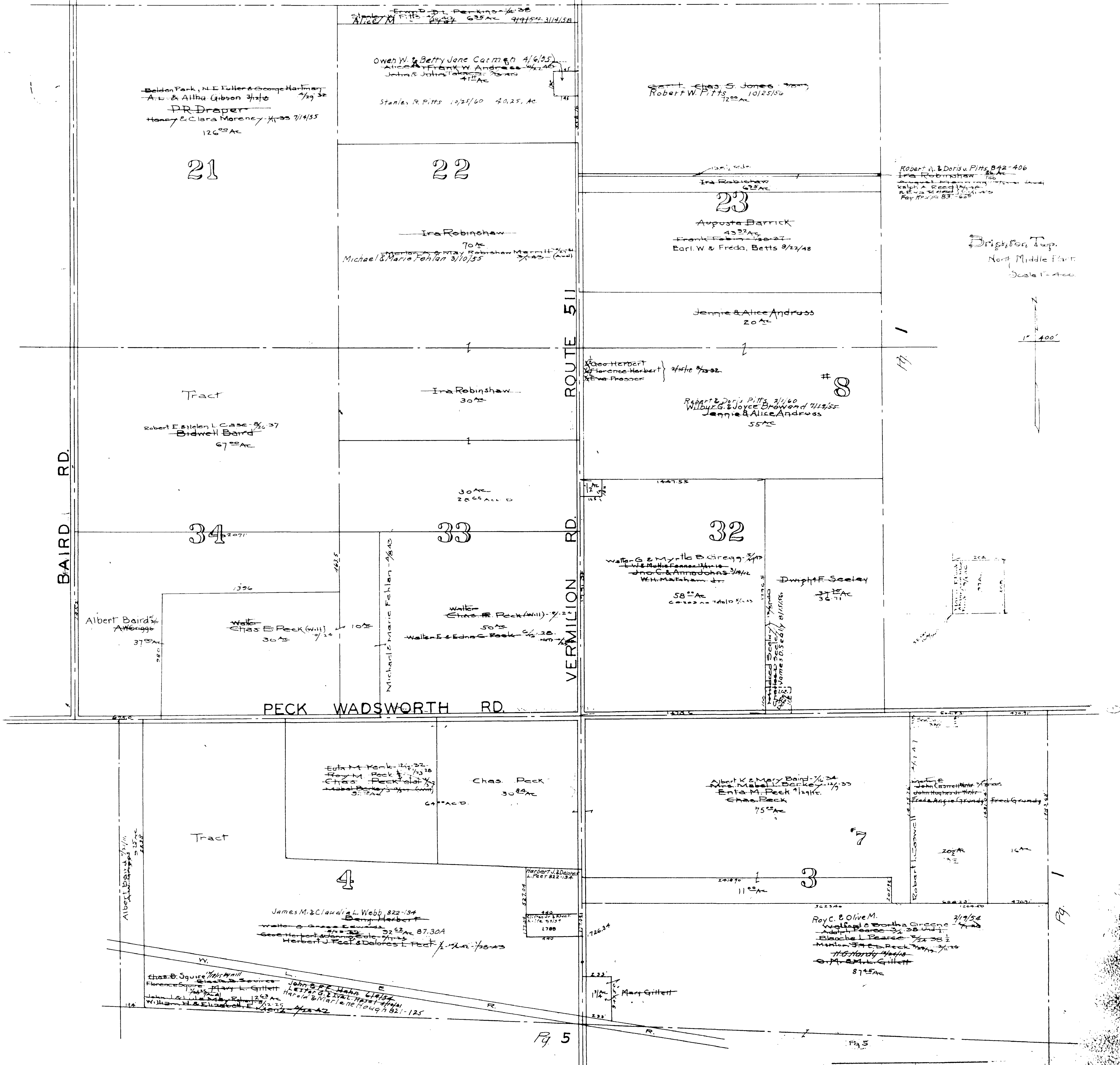
COPYRIGHT 1962
 U.S. CODE, TITLE 17
 LORAIN COUNTY, OHIO
 Reproduced by,
 Allied Microfilm Corp.
 Akron, Ohio

MAP OF
 BRIGHTON TOWNSHIP

9
 Total

1

Pg 3

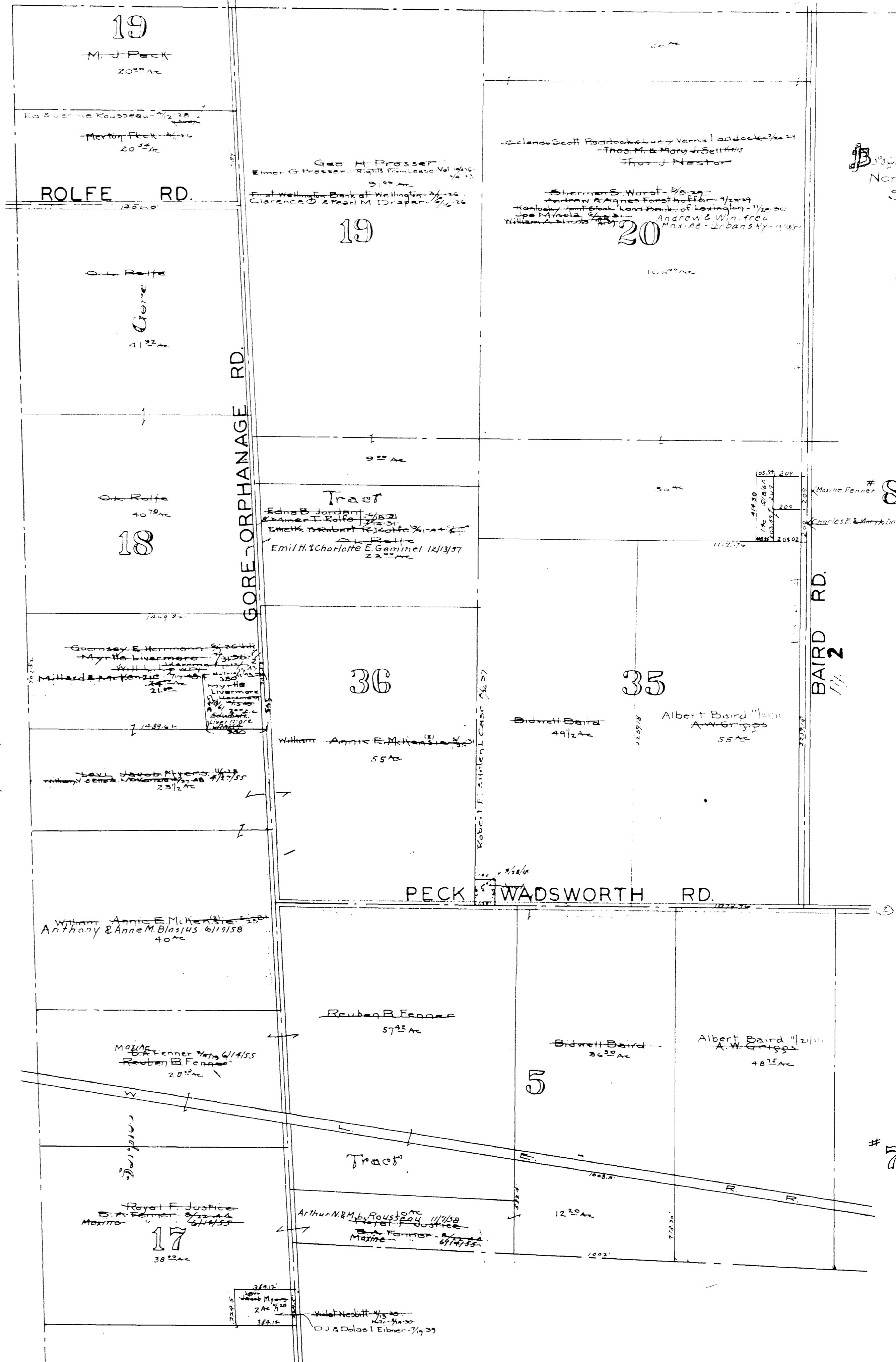


COPYRIGHT 1962
 U.S. CODE, TITLE 17
 LORAIN COUNTY, OHIO

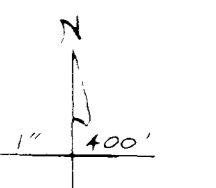
Reproduced by,
 Allied Microfilm Corp.
 Akron, Ohio

MAP OF
BRIGHTON TOWNSHIP

380
 380
 Sarah Caswell 11/15/56
 380



Brighton Twp
North West Corner
Scale 1" = 400'



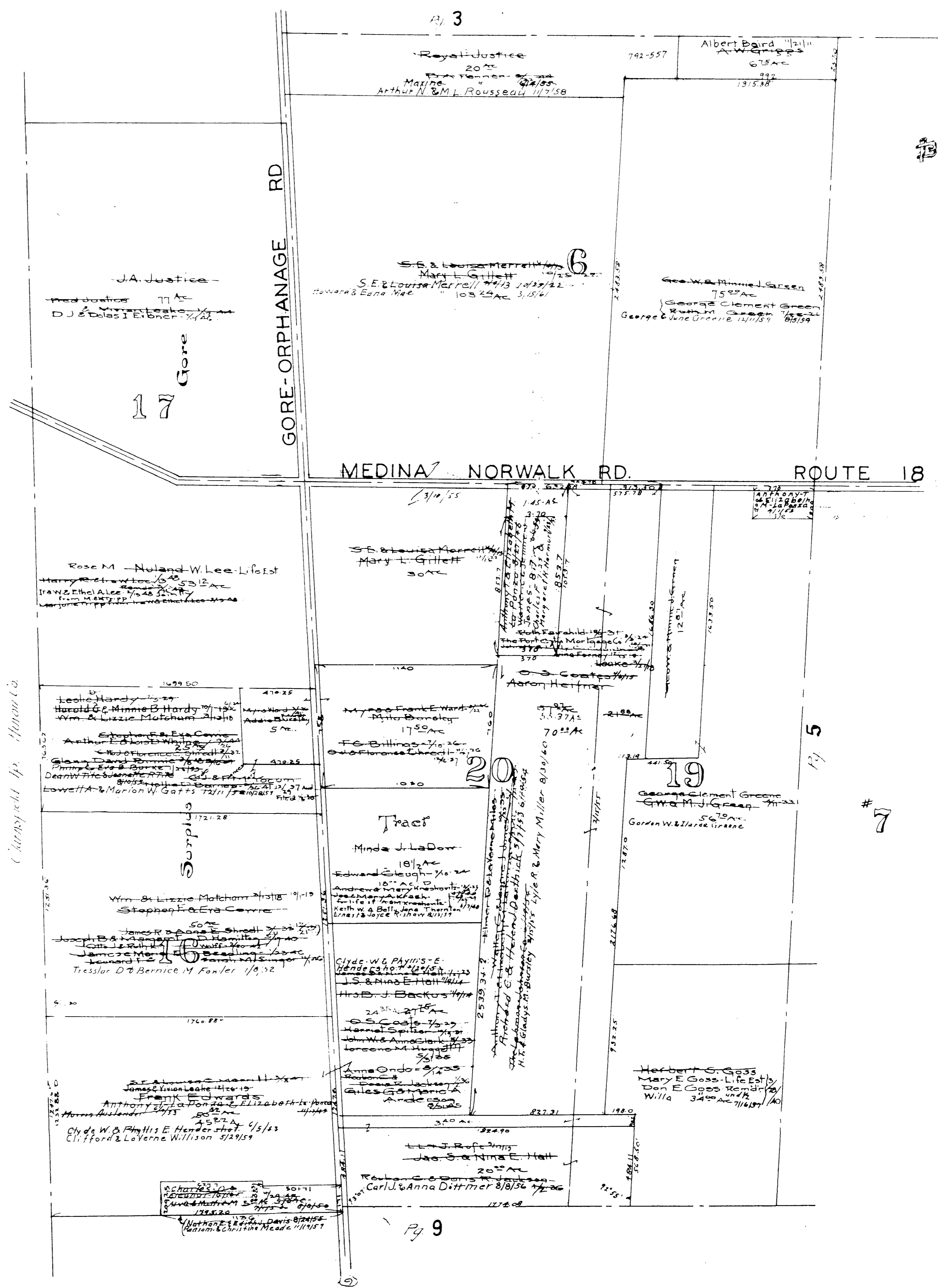
8
Maine Fenner
Charles E. & Mary Davidson

BAIRD RD.
1/4 2

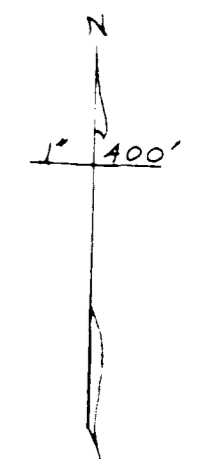
MAP OF
BRIGHTON TOWNSHIP

COPYRIGHT 1962
U.S. CODE, TITLE 17
LORAIN COUNTY, OHIO

Reproduced by,
Allied Microfilm Corp.
Akron, Ohio

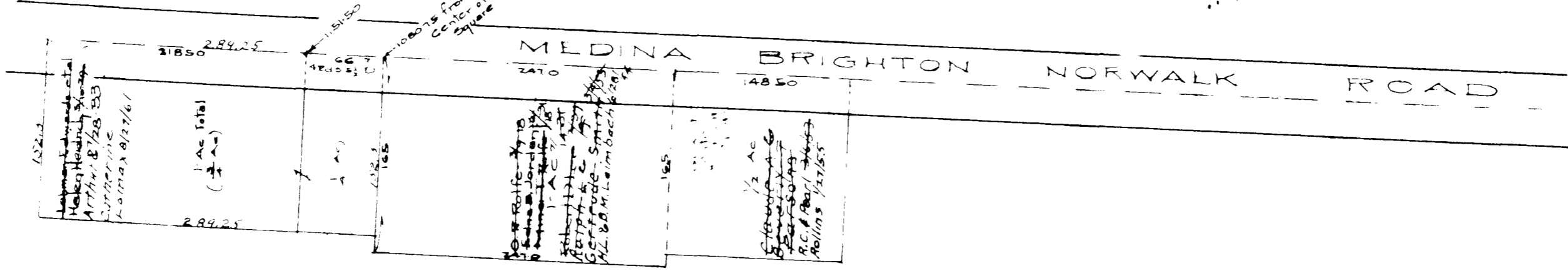


Brighton Twp.
West Middle Part
Scale 1" = 100'

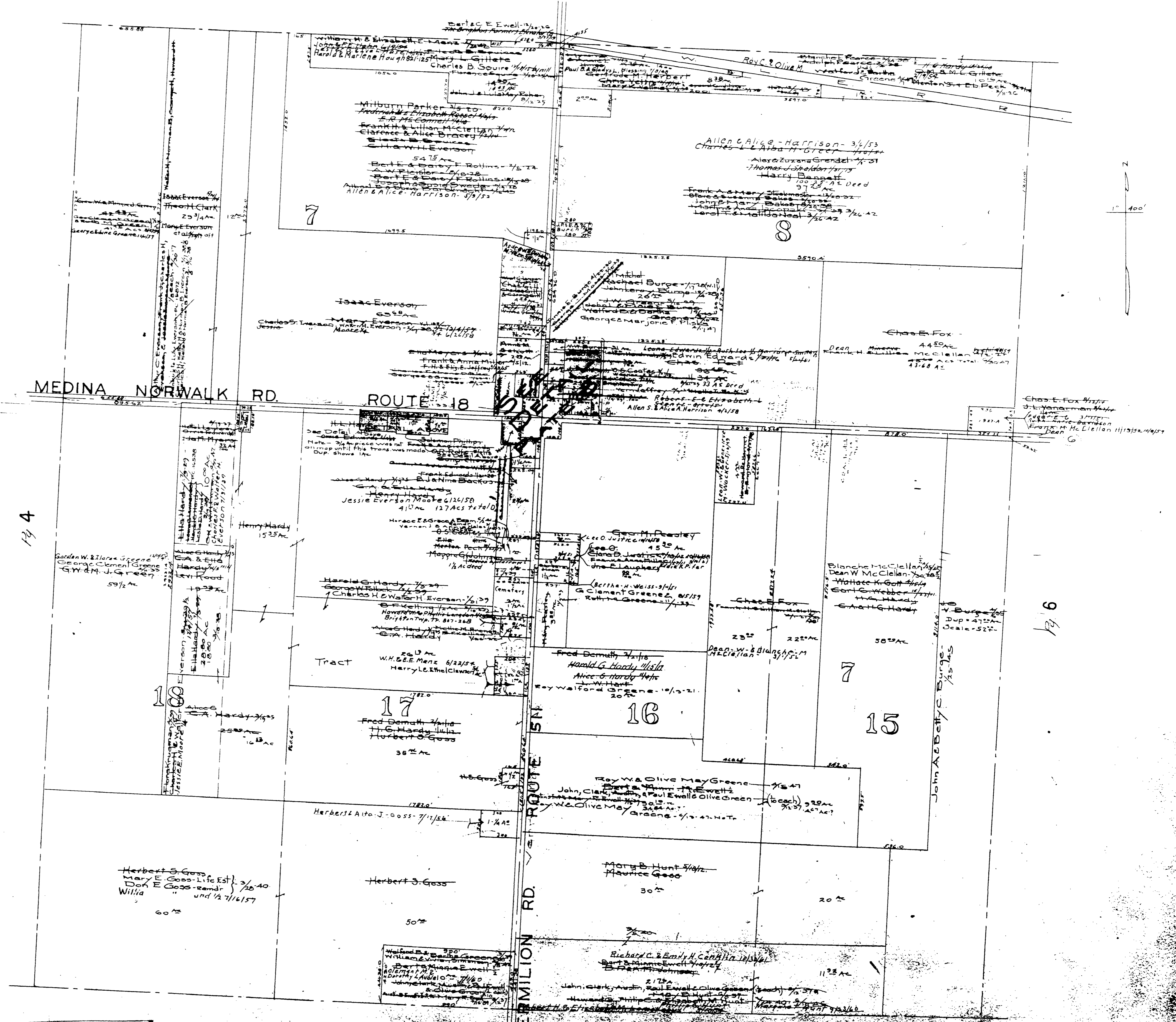


COPYRIGHT 1962
U.S. CODE, TITLE 17
LORAIN COUNTY, OHIO
Reproduced by,
Allied Microfilm Corp.
Akron, Ohio

MAP OF
BRIGHTON TOWNSHIP



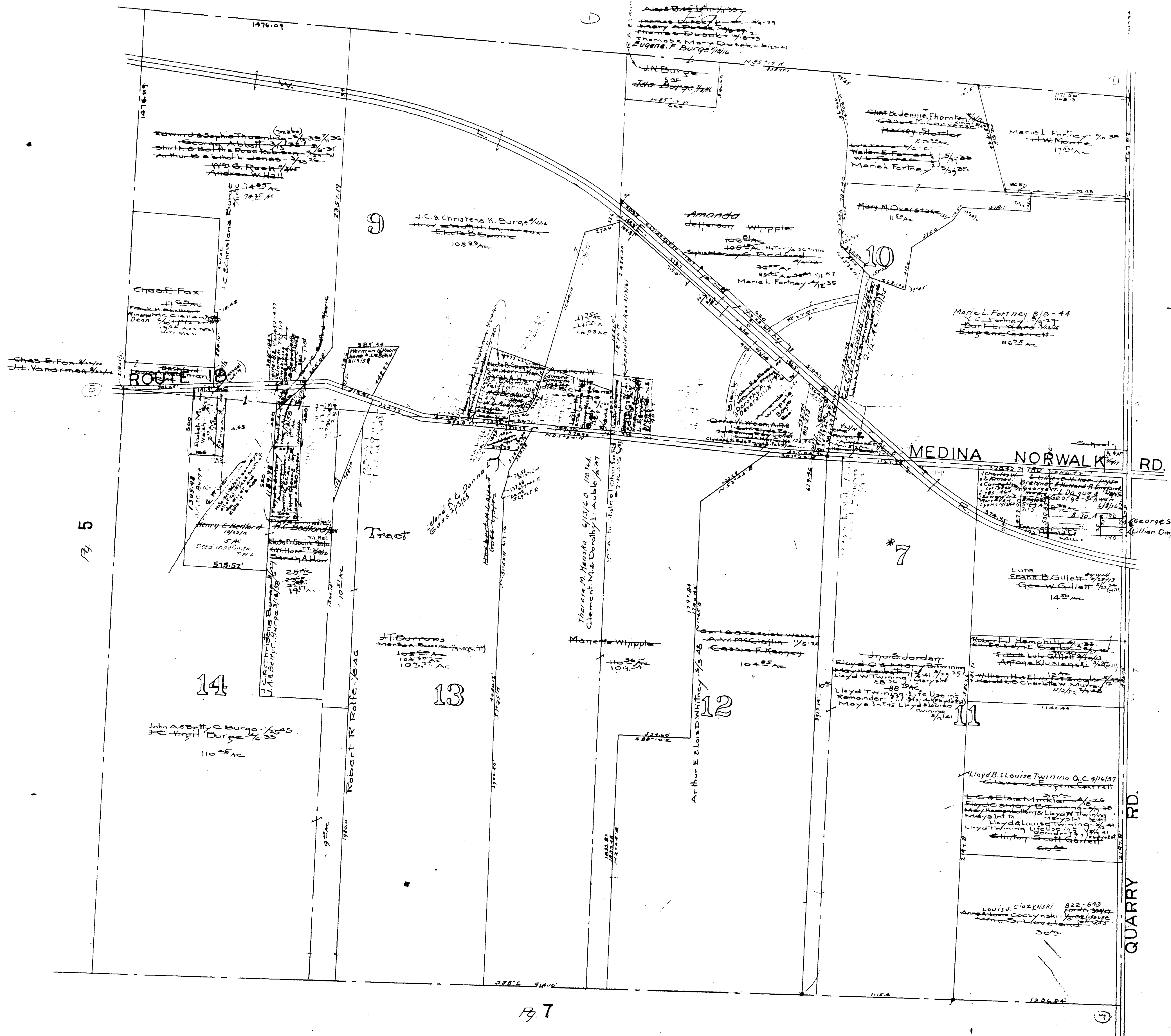
Brighton Township
Center Part
Scale 1"=400'



COPYRIGHT 1962
U.S. CODE, TITLE 17
LORAIN COUNTY, OHIO

Reproduced by,
Allied Microfilm Corp.
Akron, Ohio

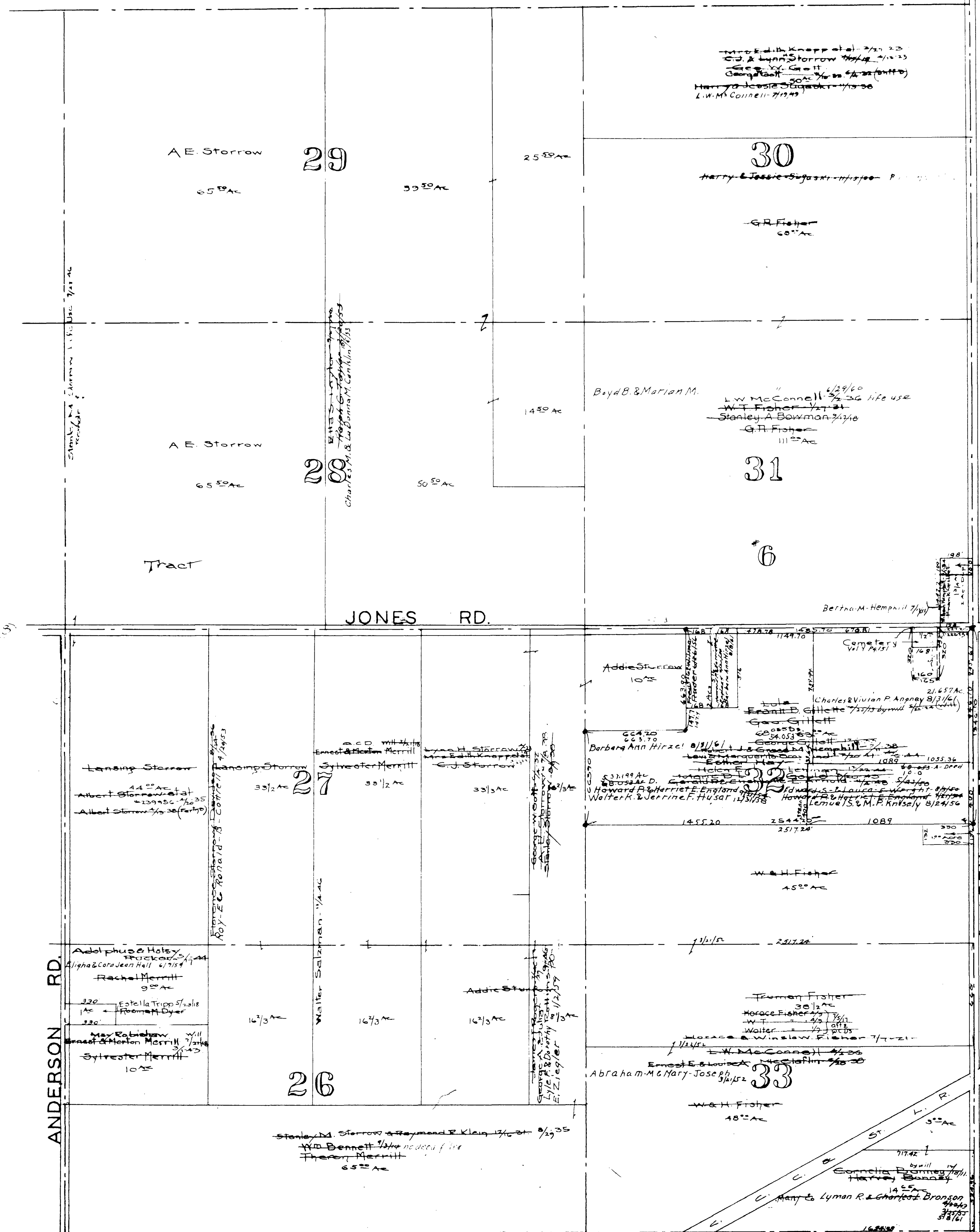
MAP OF
BRIGHTON TOWNSHIP



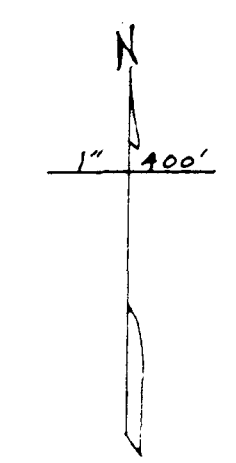
COPYRIGHT 1962
U.S. CODE, TITLE 17
LORAIN COUNTY, OHIO

Reproduced by,
Allied Microfilm Corp.
Akron, Ohio

MAP OF
BRIGHTON TOWNSHIP



Brighton Twp.
East Middle Part
Scale 1" = 400'



JONES RD.

ANDERSON RD.

QUARRY RD.

Rahester Tp.

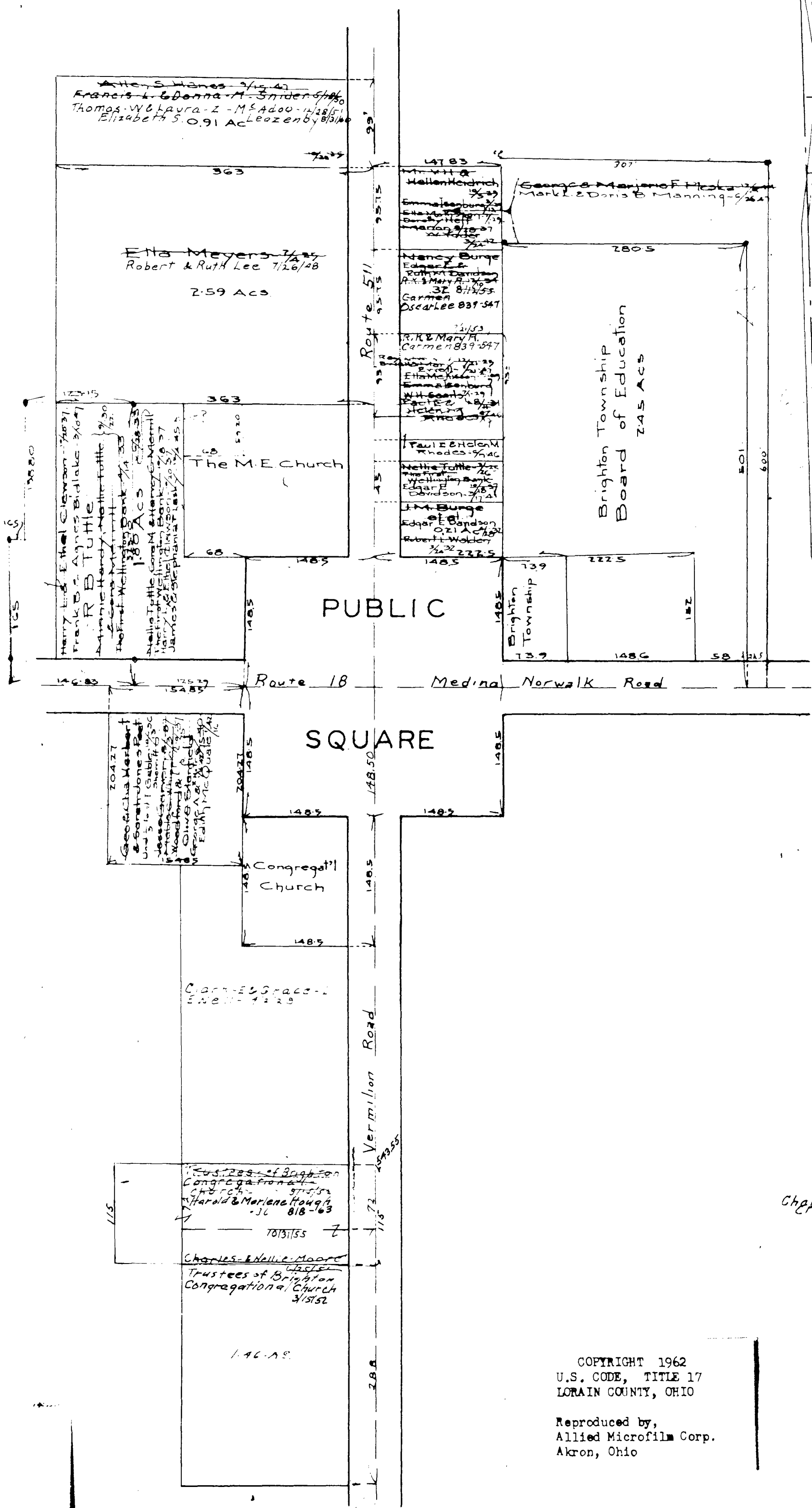
Note: Lots #28-29 contain from 15 to 20 Acre more than dup. Seems to be more land than shown on dup as adjoining lots are o.k.

COPYRIGHT 1962
U.S. CODE, TITLE 17
LORAIN COUNTY, OHIO
Reproduced by,
Allied Microfilm Corp.
Akron, Ohio

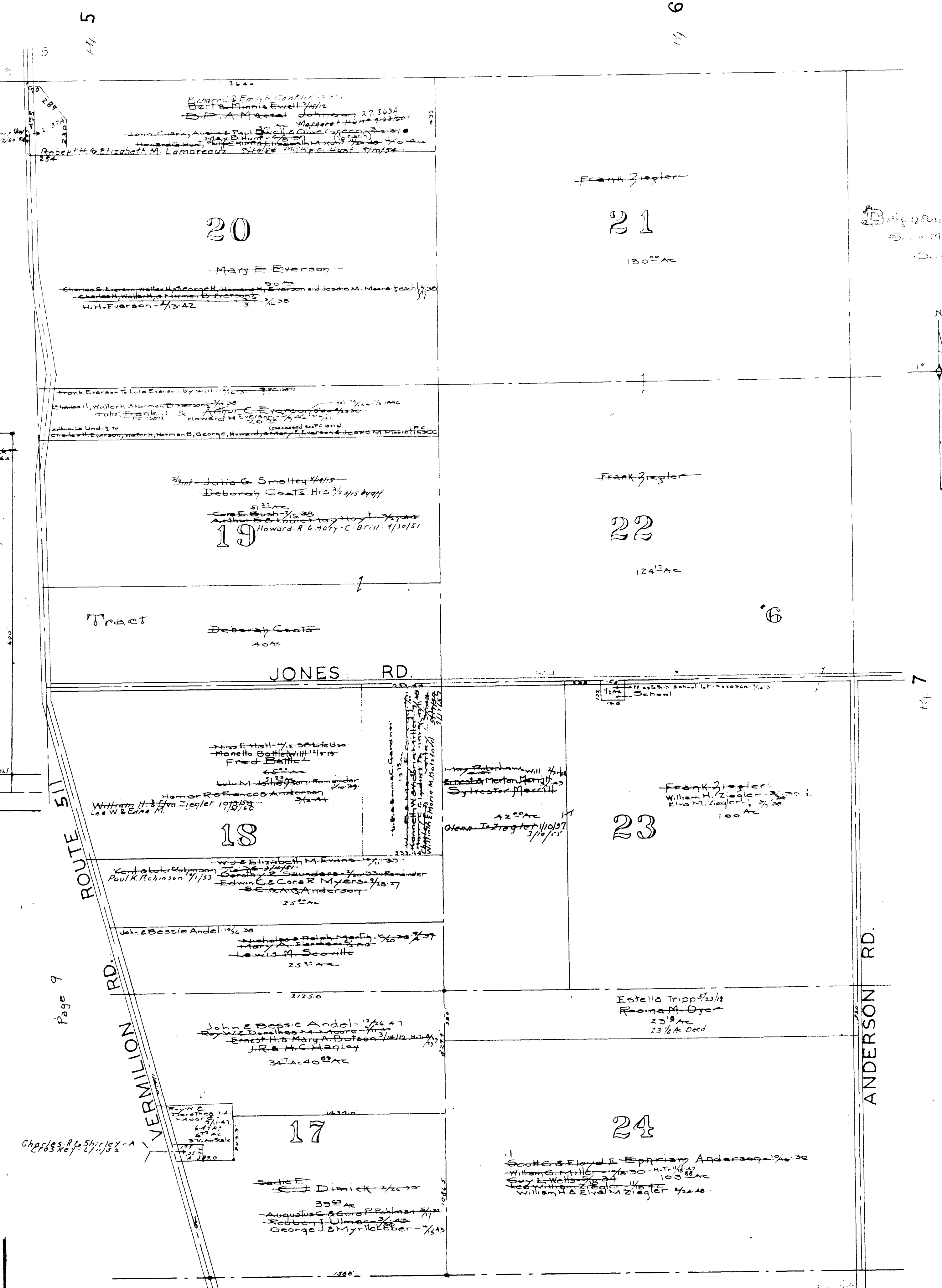
MAP OF
BRIGHTON TOWNSHIP

DETAIL OF BRIGHTON CENTER FROM PAGE 5

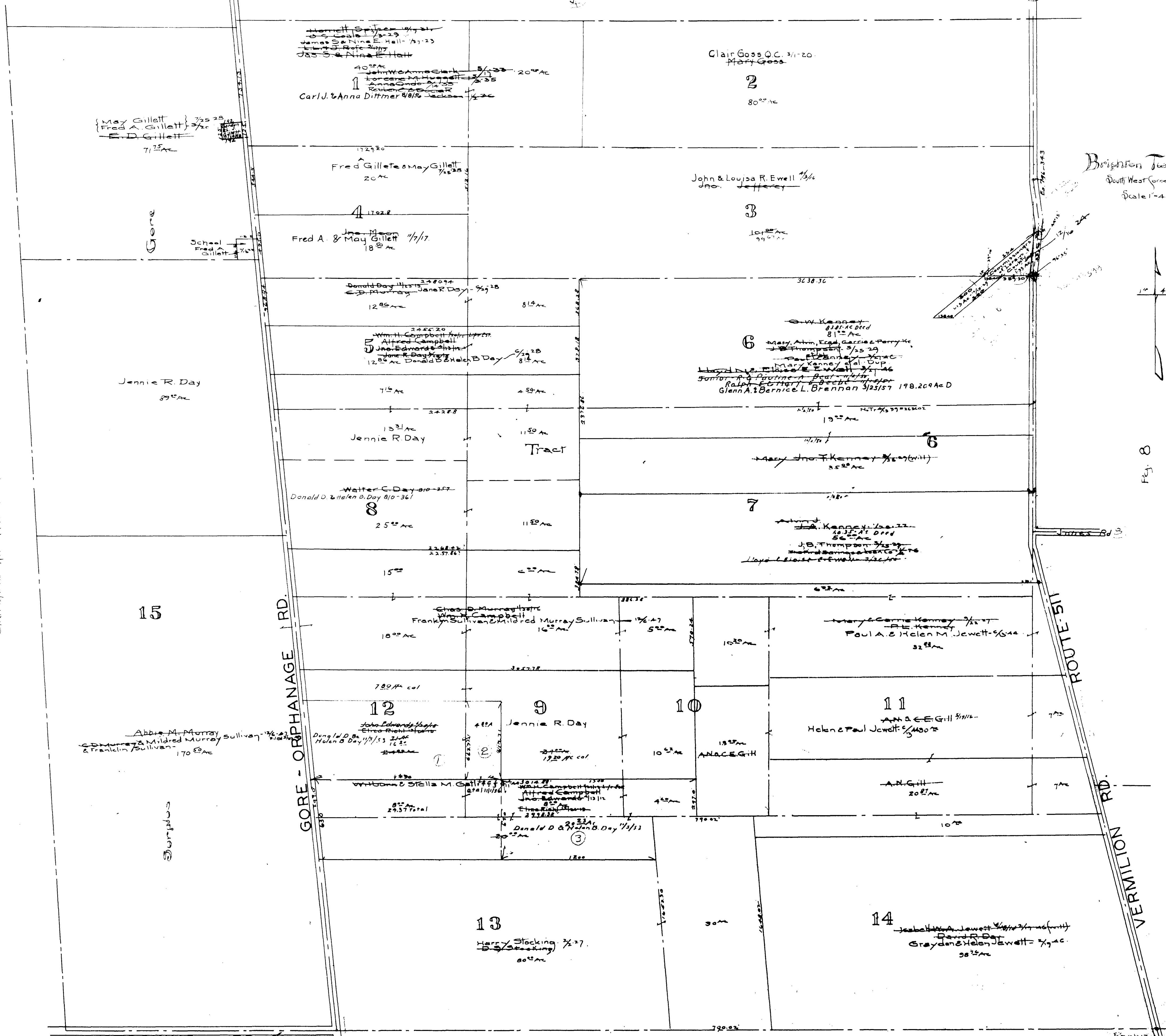
SCALE 1"=100'



COPYRIGHT 1962
 U.S. CODE, TITLE 17
 LORAIN COUNTY, OHIO
 Reproduced by,
 Allied Microfilm Corp.
 Akron, Ohio



Rochester Tp.
 Page 8



Brighton Twp.
South West Corner
Scale 1"=400'

1" = 400'

Fig. 8

Fig. 8

Loran Co., Ohio

STOCKING RD.

Rothester Twp.
Pages 6+8

COPYRIGHT 1962
U.S. CODE, TITLE 17
LORAIN COUNTY, OHIO
Reproduced by,
Allied Microfilm Corp.
Akron, Ohio

MAP OF
BRIGHTON TOWNSHIP