



6

5

3

2

10

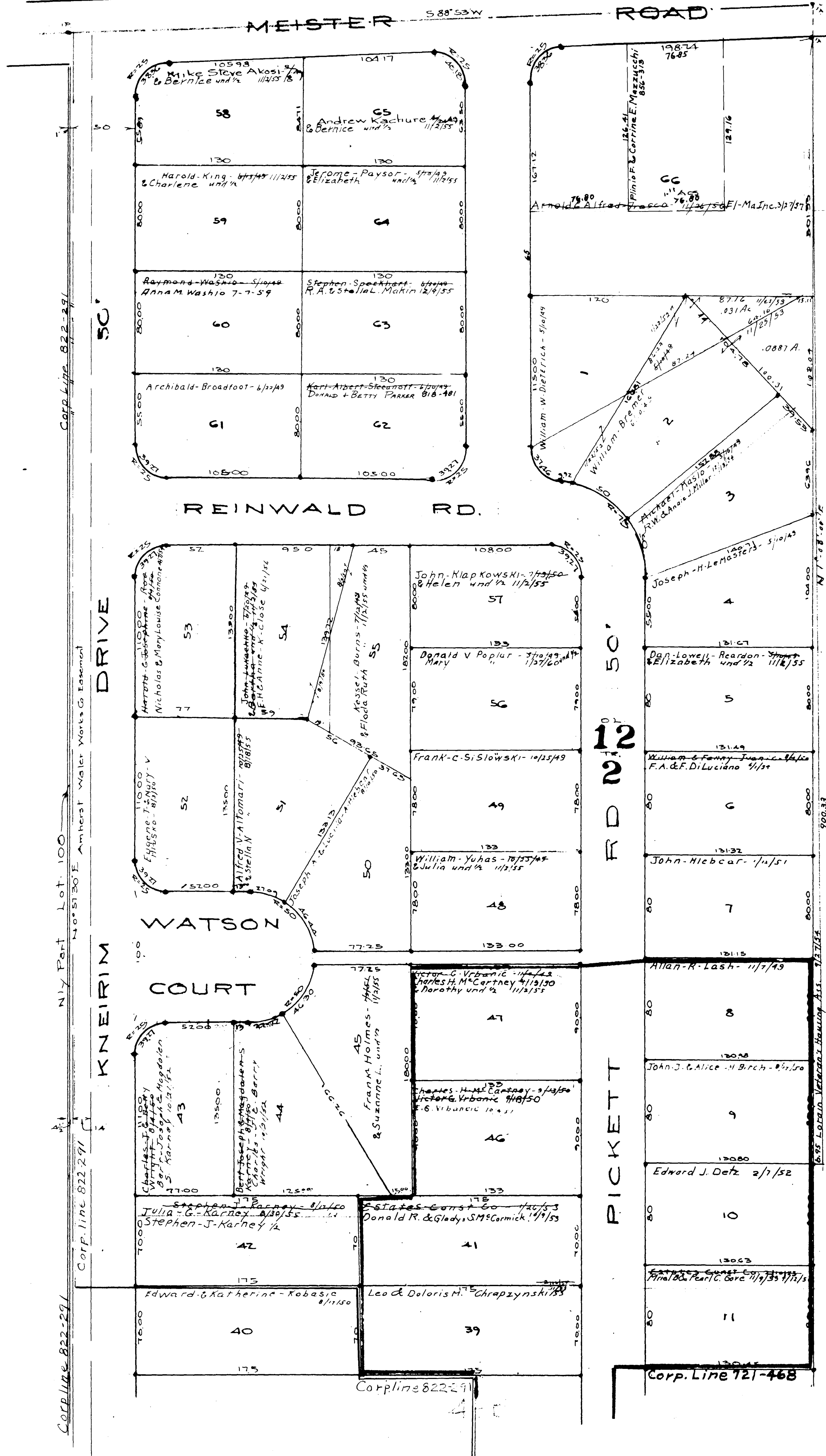
COPYRIGHT 1962
 U.S. CODE, TITLE 17
 LORAIN COUNTY, OHIO

Reproduced by,
 Allied Microfilm Corp.
 Akron, Ohio

BLACK RIVER TOWNSHIP

Annexation 801-25

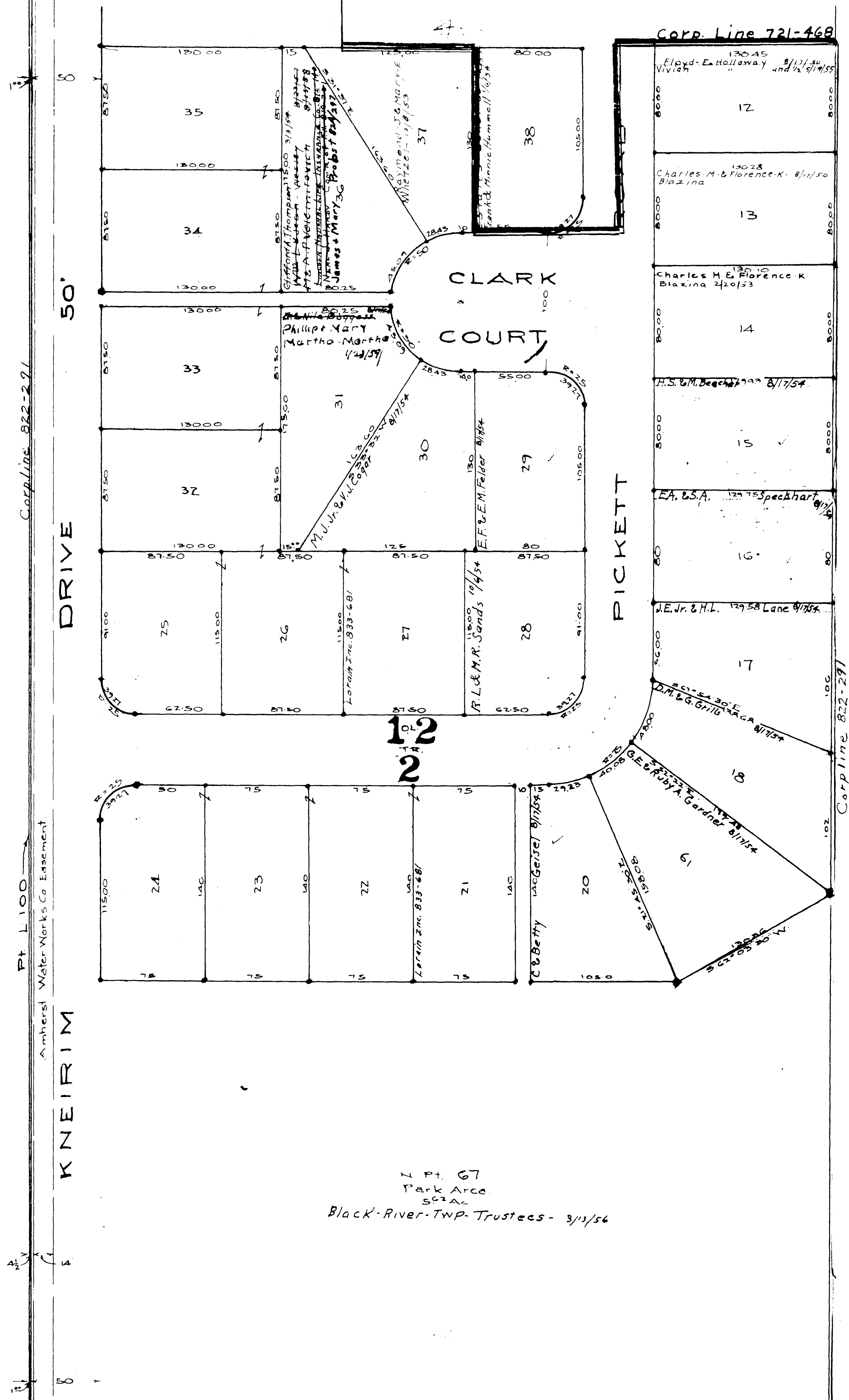
Scale 1"=100'



COPYRIGHT 1962
 U.S. CODE, TITLE 17
 LORAIN COUNTY, OHIO
 Reproduced by,
 Allied Microfilm Corp.
 Akron, Ohio

BLACK RIVER
 TOWNSHIP

Kneirim Drive Homes Vol. 14 Pgs 26-27
Loring blank - Loring Veterans Housing Association



1 Pt. 67
Park Arce
562AL
Black-River-TWP-Trustees - 3/13/56

COPYRIGHT 1962
U.S. CODE, TITLE 17
LORAIN COUNTY, OHIO
Reproduced by,
Allied Microfilm Corp.
Akron, Ohio

BLACK RIVER
TOWNSHIP

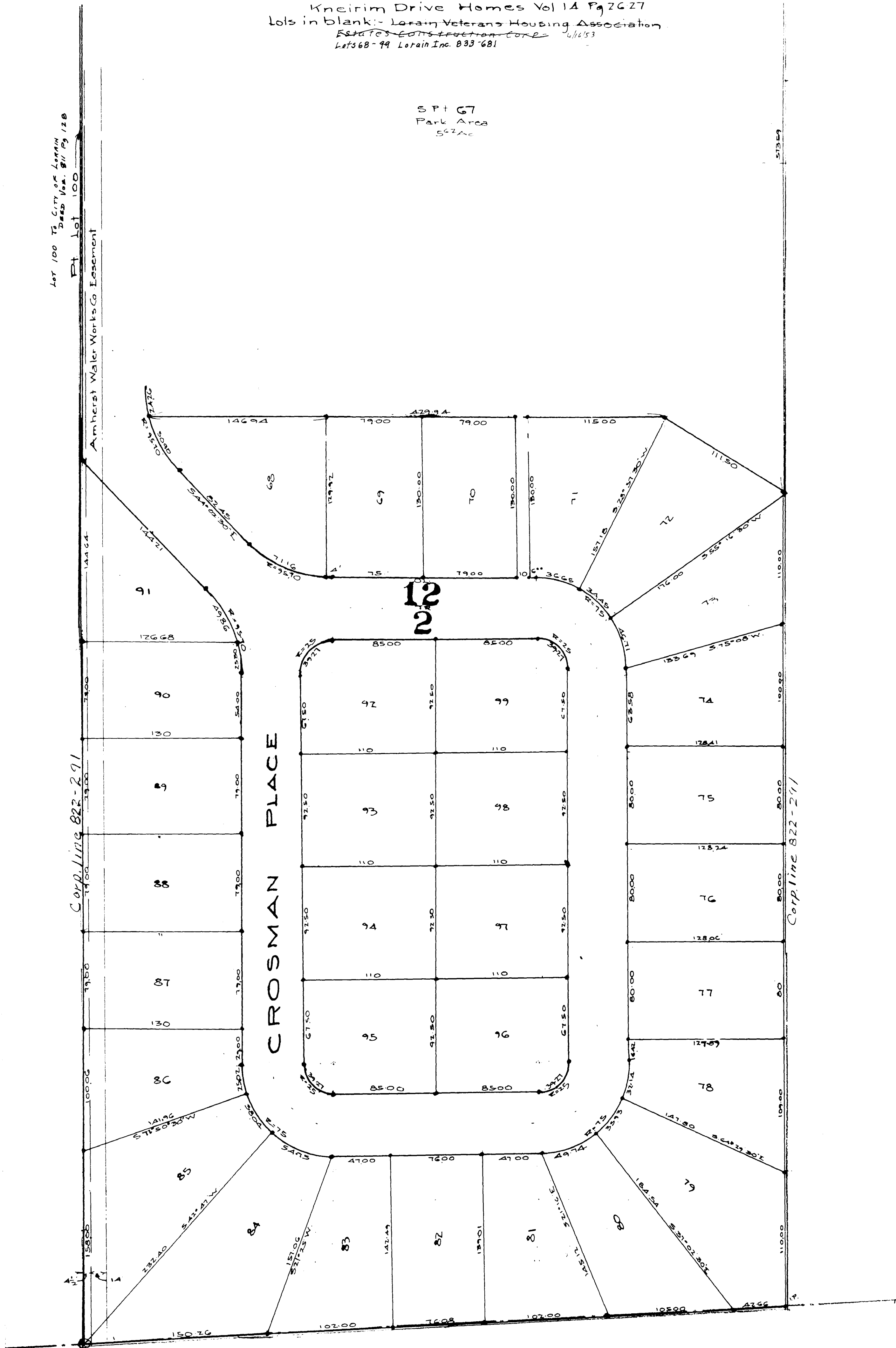
Kneirim Drive Homes Vol 14 Pg 2627
lots in blank - Lorain Veterans Housing Association
~~ESTATED EIGHTS EIGHTH CORP~~ 4/16/53
Lots 68-99 Lorain Inc. 833 681

S P + G7
Park Area
5422.00

Lot 100 To City of Lorain
Deed Vol. 81 Pg 128
Pt Lot 100
Amherst Water Works Co Easement

Corp. Line 822-291

Corp. Line 822-291



COPYRIGHT 1962
U.S. CODE, TITLE 17
LORAIN COUNTY, OHIO
Reproduced by,
Allied Microfilm Corp.
Akron, Ohio

BLACK RIVER
TOWNSHIP

HOLL-DAR SUBDIVISION.

BLACK RIVER TOWNSHIP O.L.1

SCALE 1" = 50'

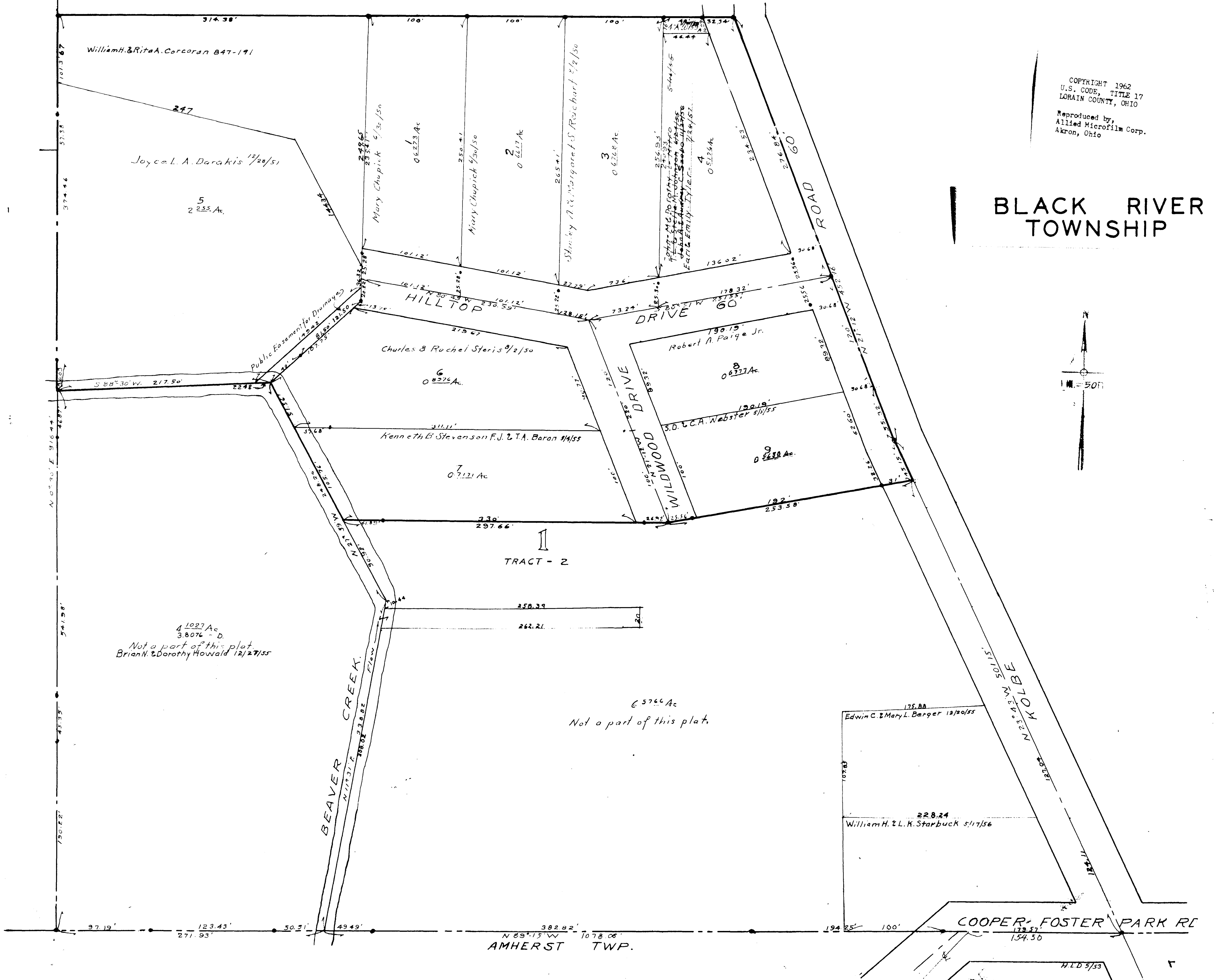
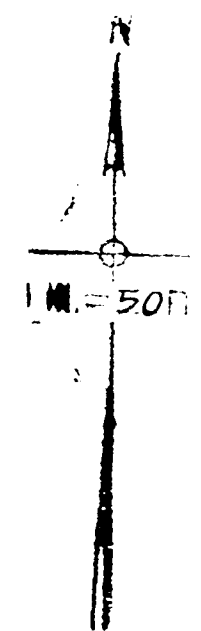
VOL. 15 PG. 74

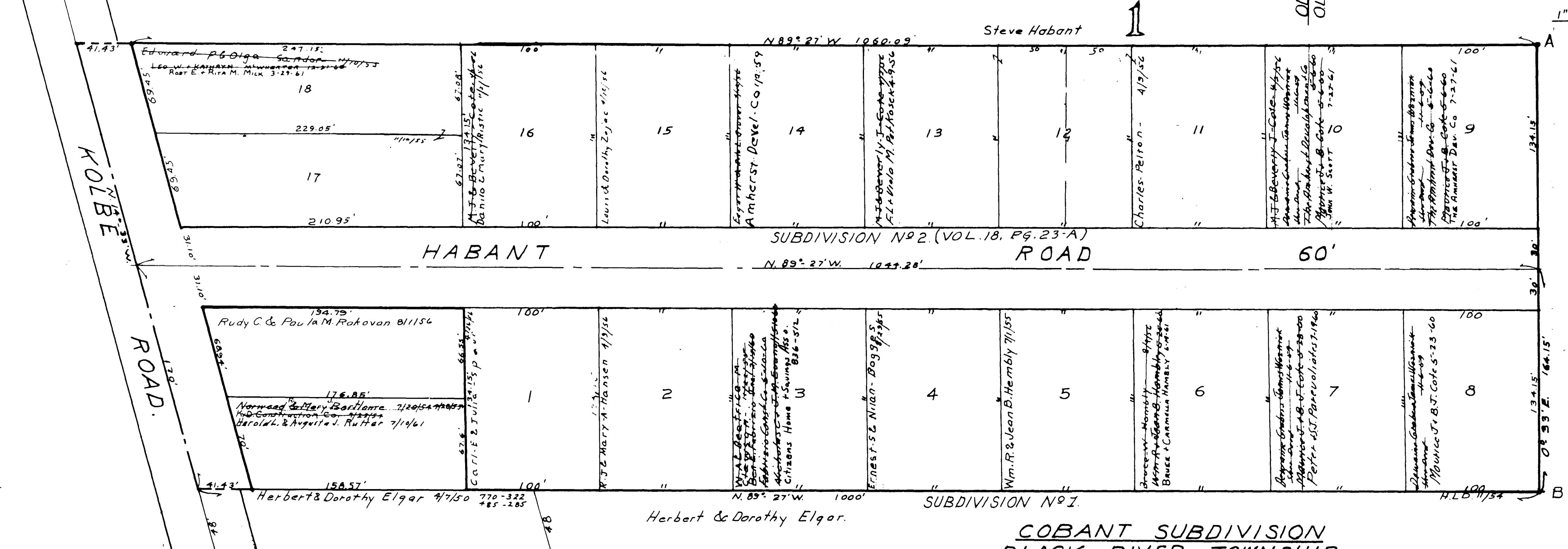
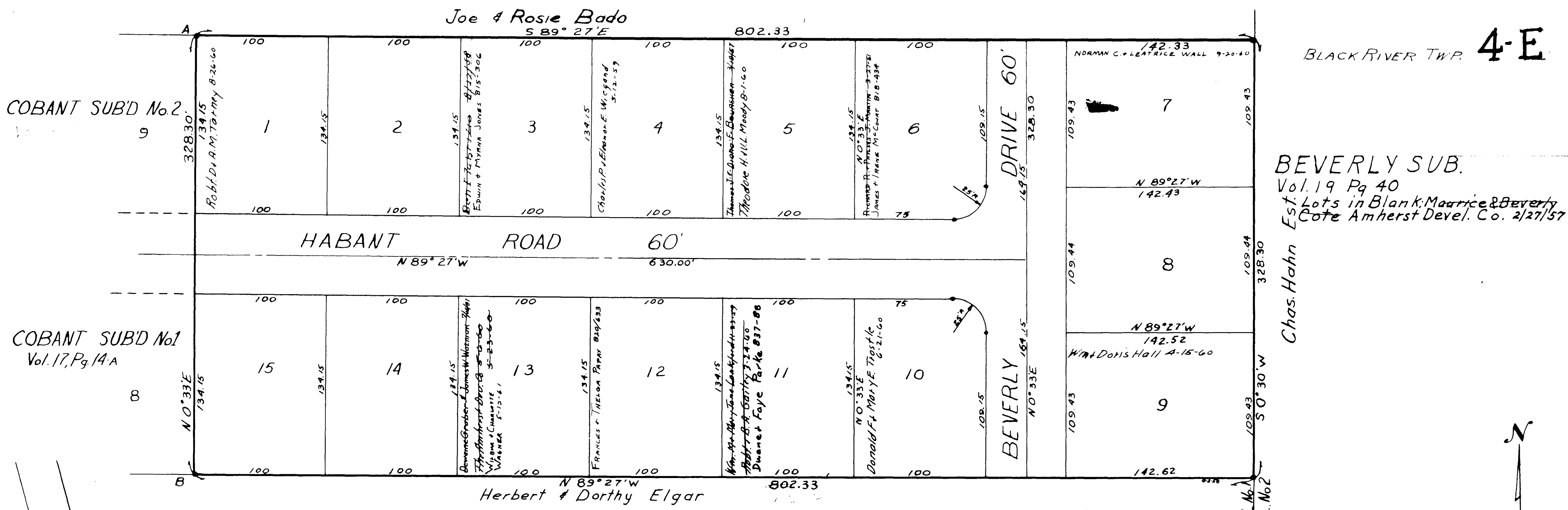
Lots in Blank - George Charles Hollstein.

COPYRIGHT 1962
U.S. CODE, TITLE 17
LORAIN COUNTY, OHIO

Reproduced by,
Allied Microfilm Corp.
Akron, Ohio

BLACK RIVER TOWNSHIP

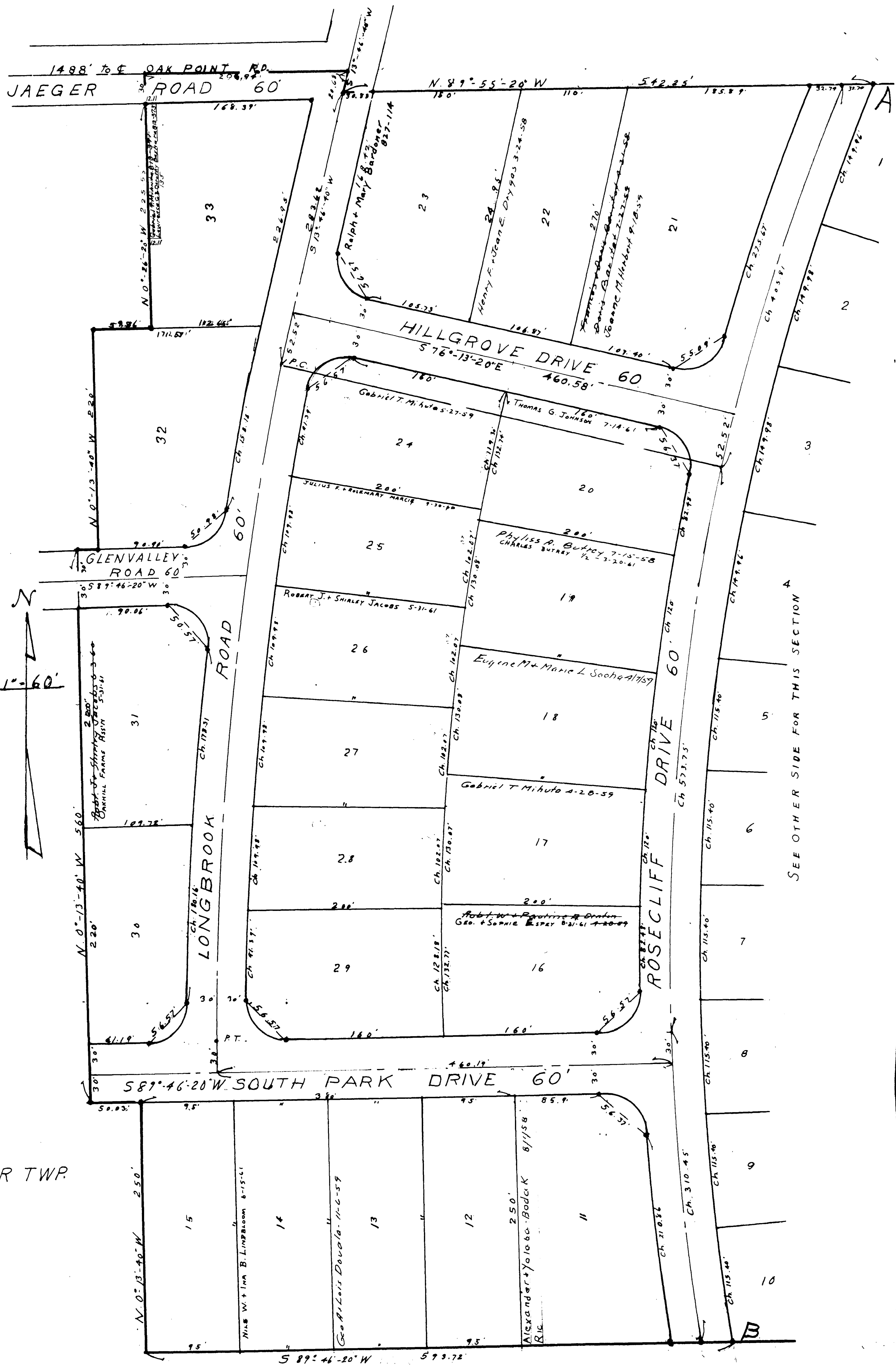




BLACK RIVER
TOWNSHIP

COPYRIGHT 1962
U.S. CODE, TITLE 17
LORAIN COUNTY, OHIO
Reproduced by
Allied Microfilm Corp.
Akron, Ohio

A 89° 33' - 40° E



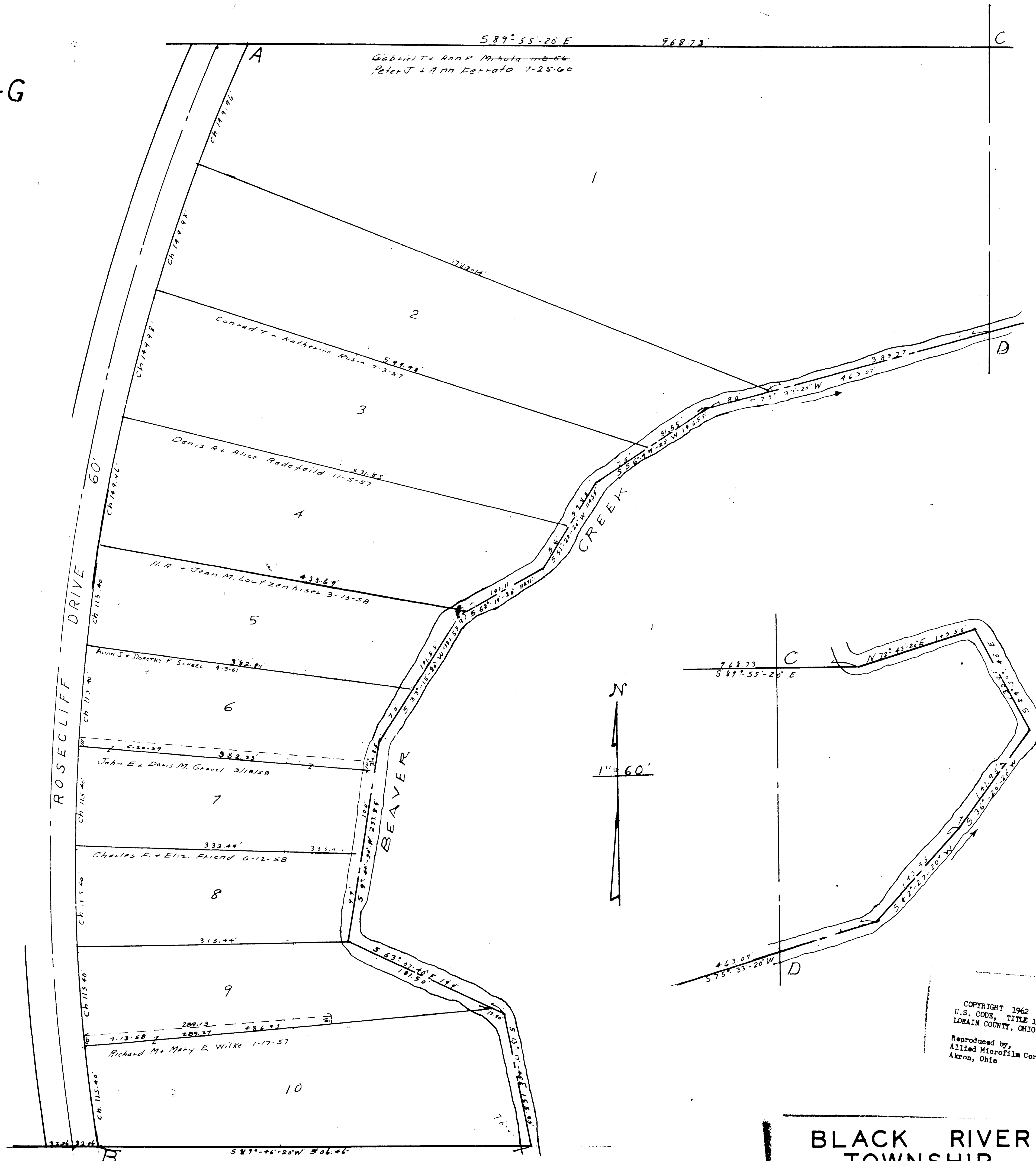
OAKHILL FARMS SUB.
 OL's. 6 & 1, TR 2 BLACK RIVER TWP.
 VOL. 19, Pg. 25
 Lots in Blank: Oakhill Farms Assn.
 Geo Dick President.

4-F

BLACK RIVER
 TOWNSHIP

SEE OTHER SIDE FOR THIS SECTION

COPYRIGHT 1962
 U.S. CODE, TITLE 17
 LORAIN COUNTY, OHIO
 Reproduced by,
 Allied Microfilm Corp.
 Akron, Ohio



COPYRIGHT 1962
 U.S. CODE, TITLE 17
 LORAIN COUNTY, OHIO
 Reproduced by:
 Allied Microfilm Corp.
 Akron, Ohio

**BLACK RIVER
 TOWNSHIP**