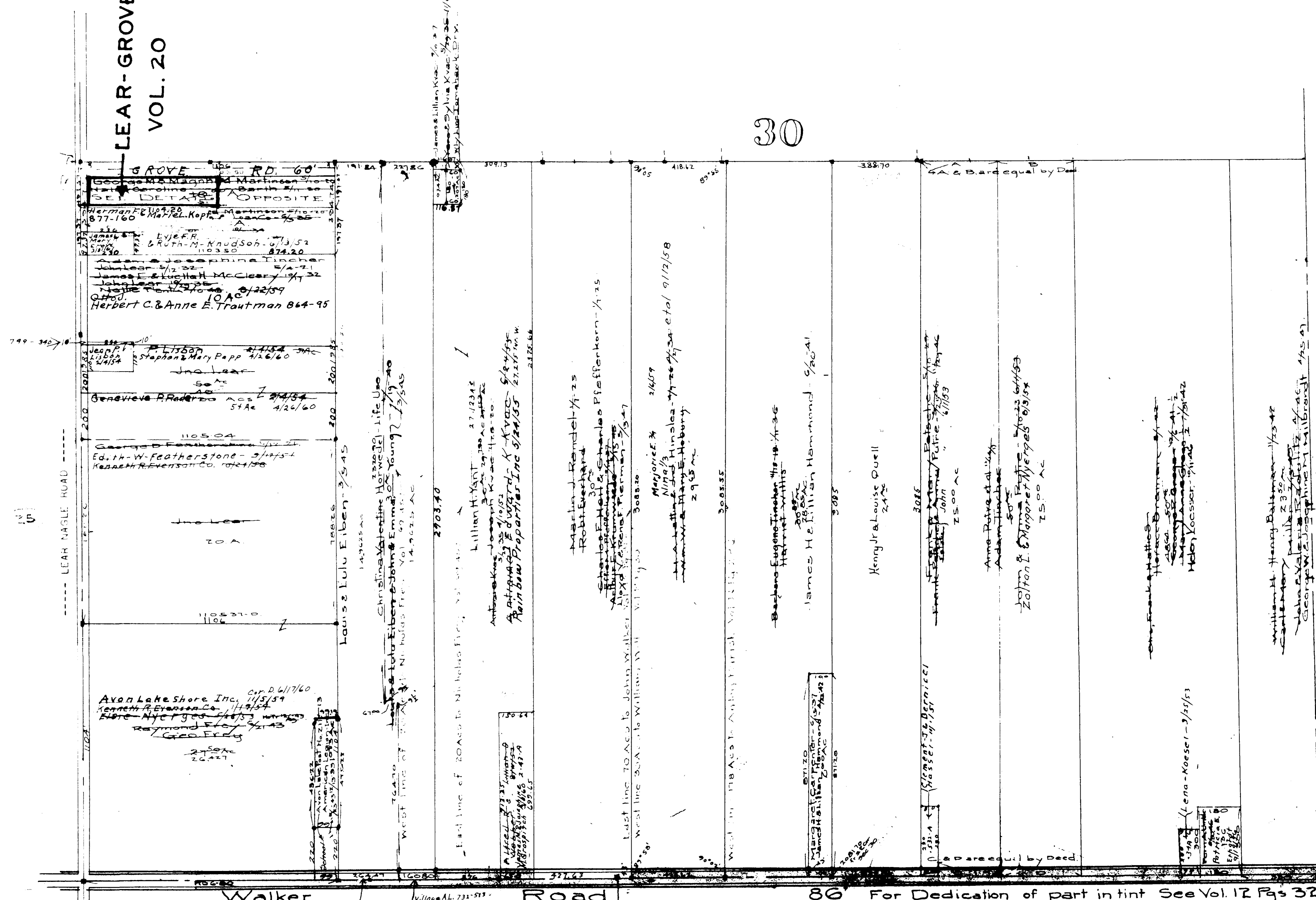


LEAR-GROVE SUB.
VOL. 20 PG. 22A

30



Sec #30 AVON TWP
NE Corner
Scale 1" = 300'

CUYAHOGA COUNTY
DOVER TWP.

Avon Lake Shore Inc. 6/17/60
Kenneth R. Evans Co. 11/3/59
Richard H. & Gladys M. Evans 11/3/59
Raymond E. Evans 11/3/59
Geo. E. Evans 11/3/59

AVON LAKE
VILLAGE

COPYRIGHT 1962
U.S. CODE, TITLE 17
LORAIN COUNTY, OHIO
Reproduced by,
Allied Microfilm Corp.
Akron, Ohio

