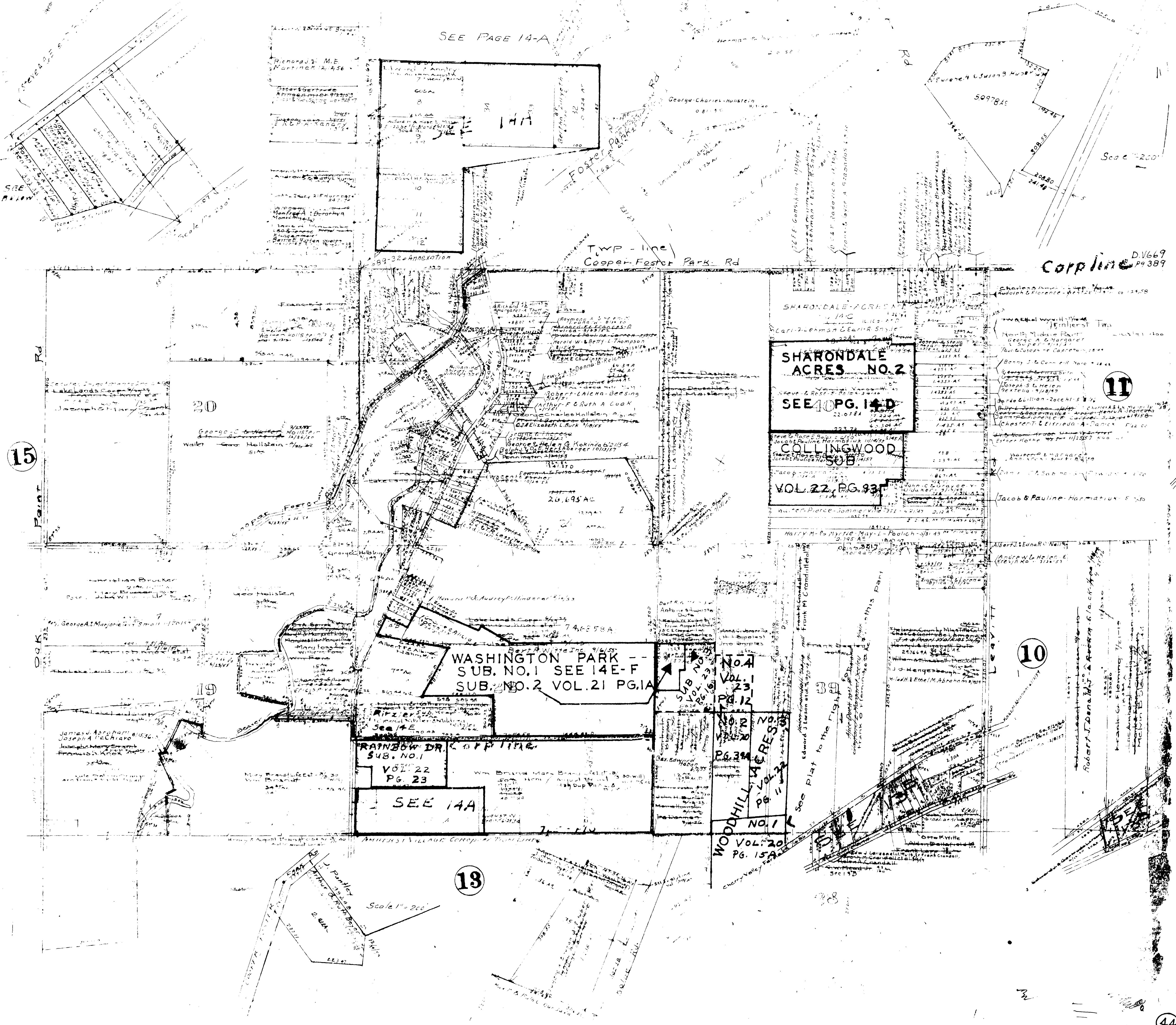


SEE PAGE 14-A

Corpline D.V.669 Pg.389



SHARONDALE ACRES NO. 2
 SEE 10 PG. 14-D

COLLINGWOOD SUB
 VOL. 22, PG. 93

WASHINGTON PARK --
 SUB. NO. 1 SEE 14E-F
 SUB. NO. 2 VOL. 21 PG. 1A

RAINBOW DR. CORPLINE
 SUB. NO. 1
 VOL. 22 PG. 23
 SEE 14A

WOODHILL ACRES
 NO. 1
 VOL. 20 PG. 15A

15

11

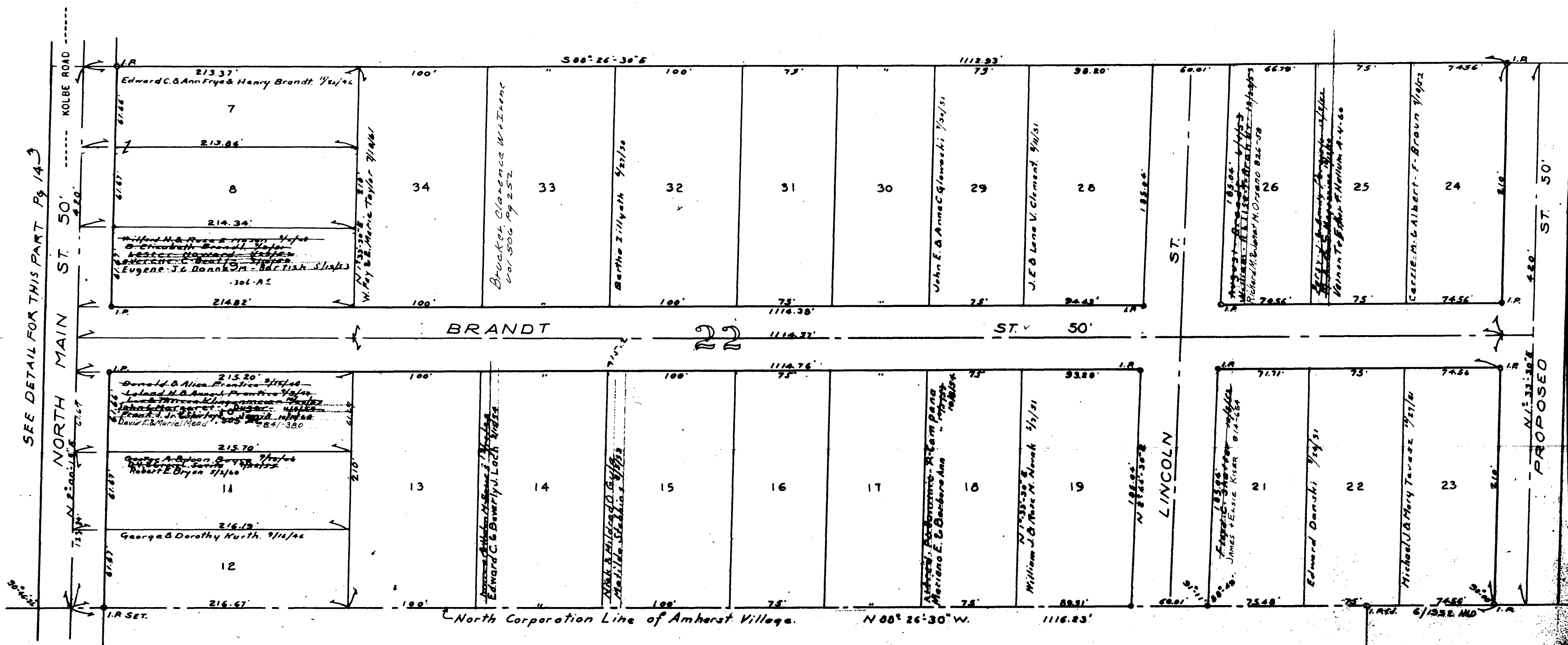
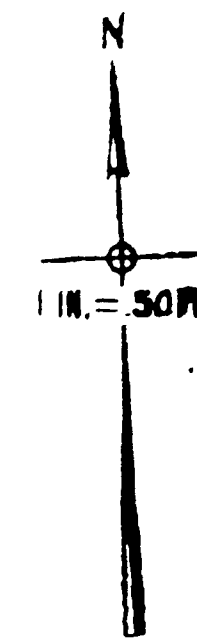
10

13

44

BRANDT ALLOTMENT PROPOSED No. 1

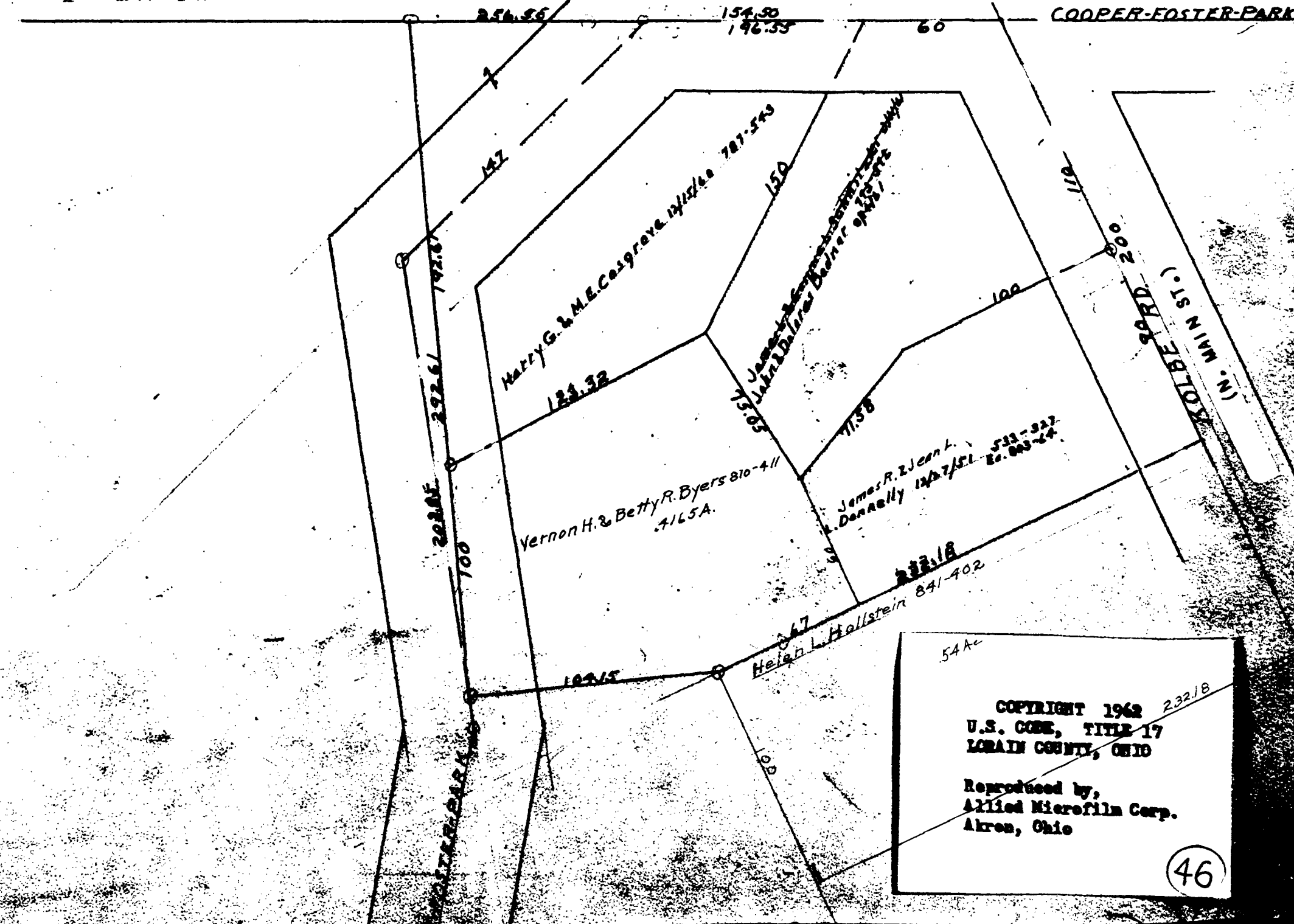
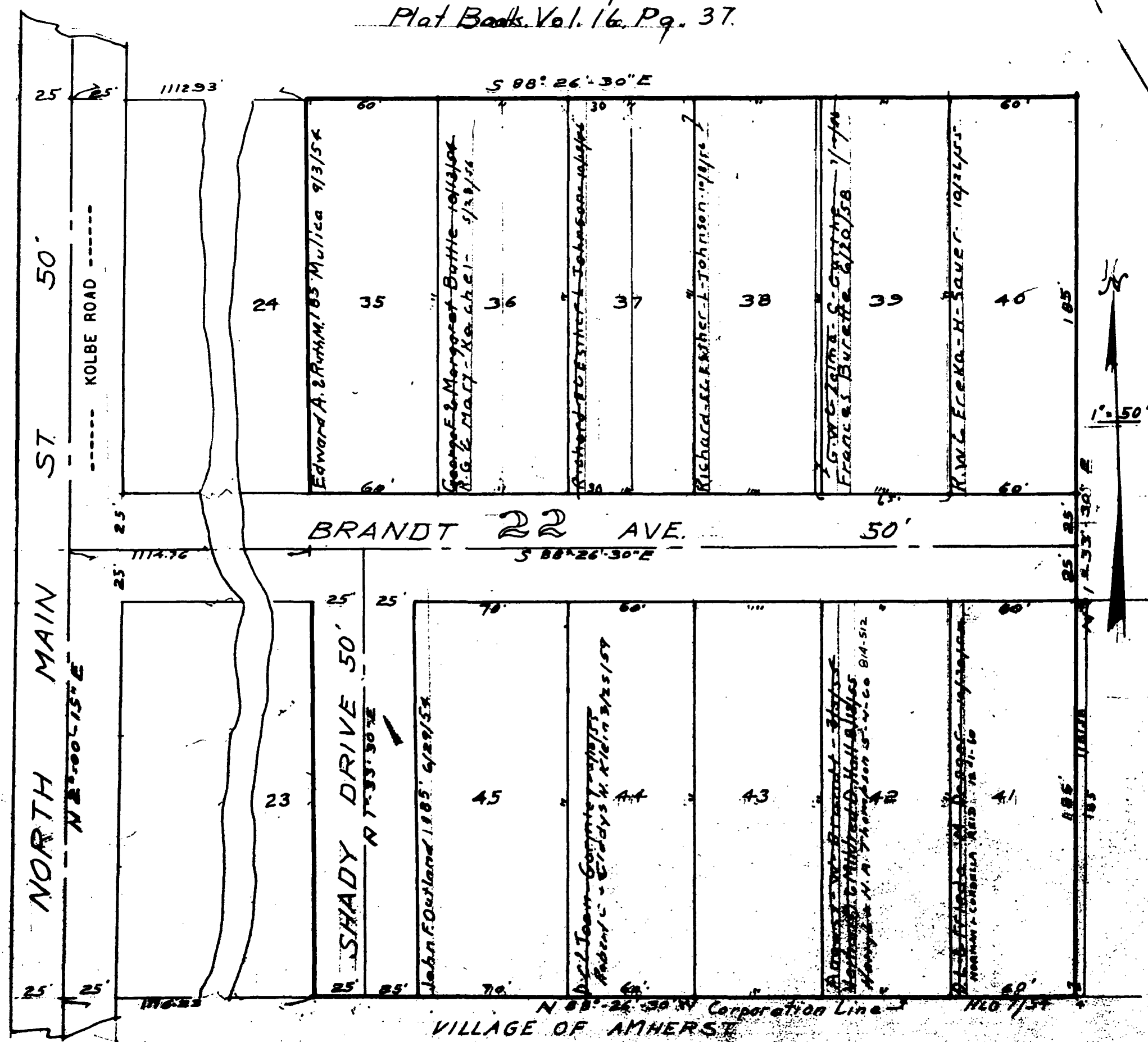
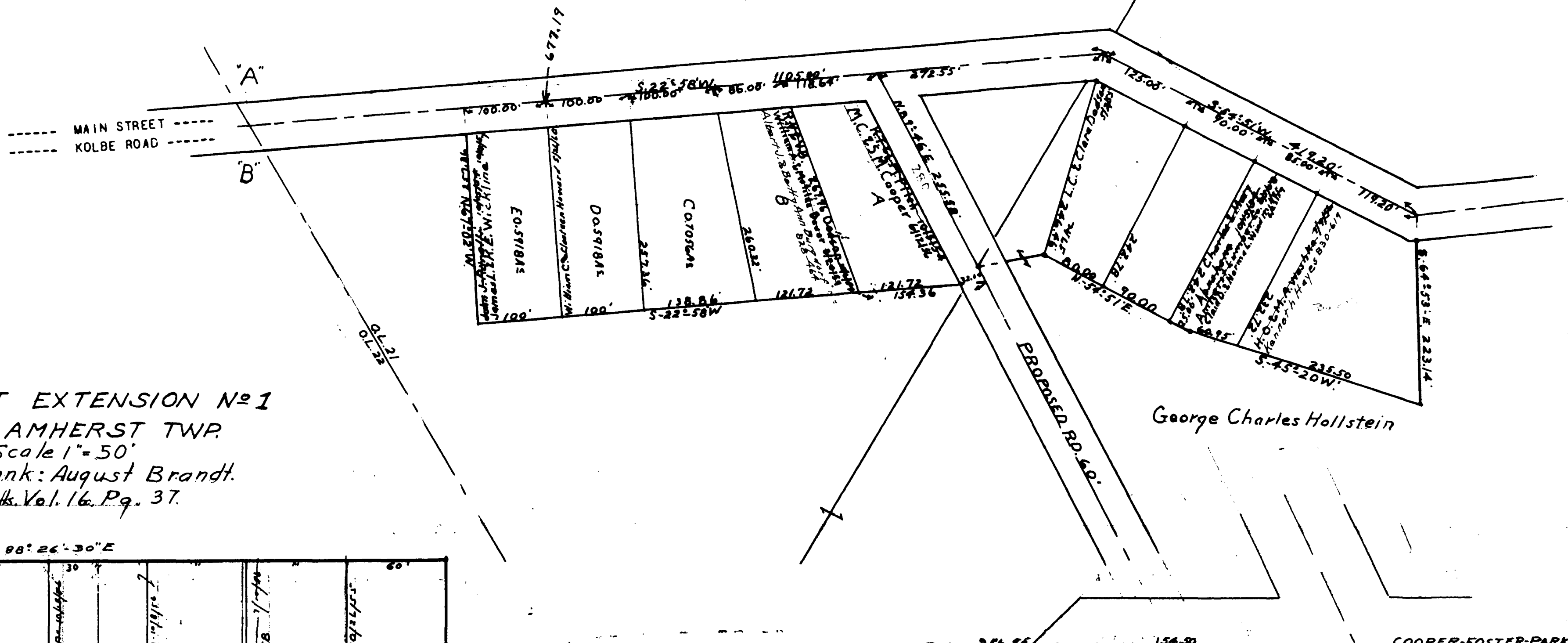
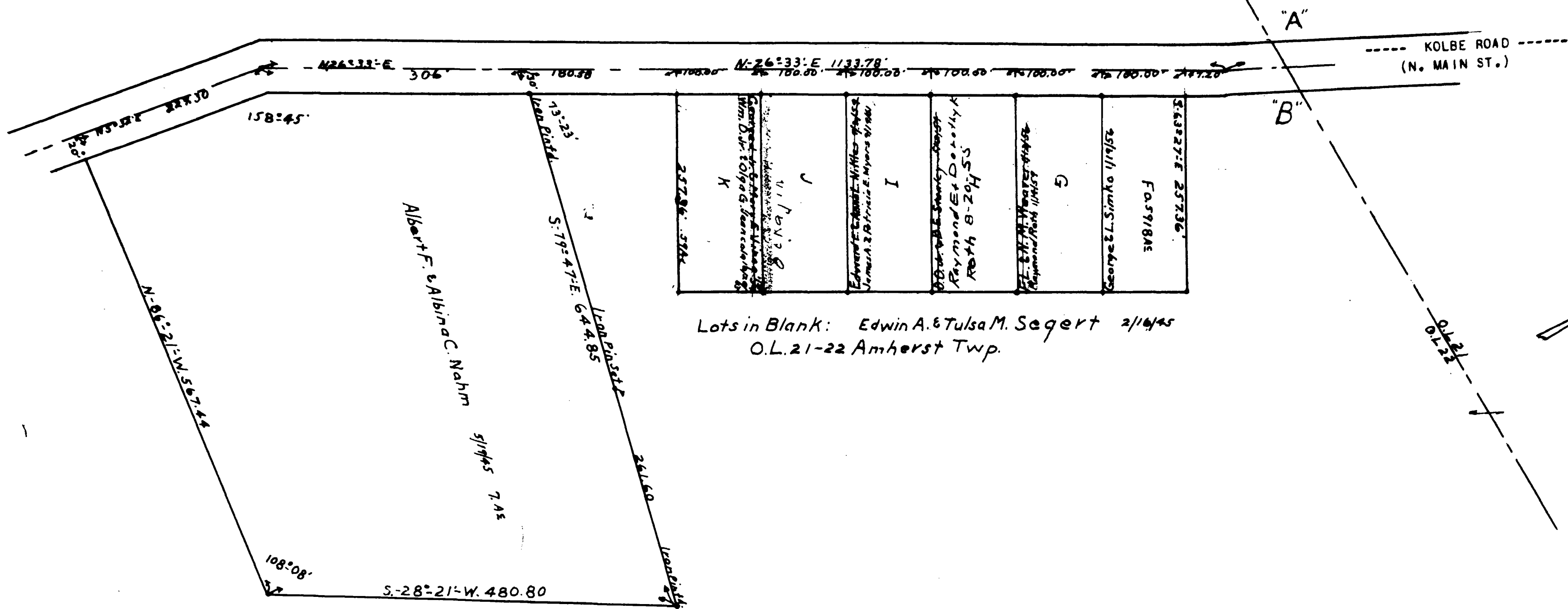
SCALE 1"=50'



SEE DETAIL FOR THIS PART Pg 14-3

MAP OF
AMHERST TOWNSHIP

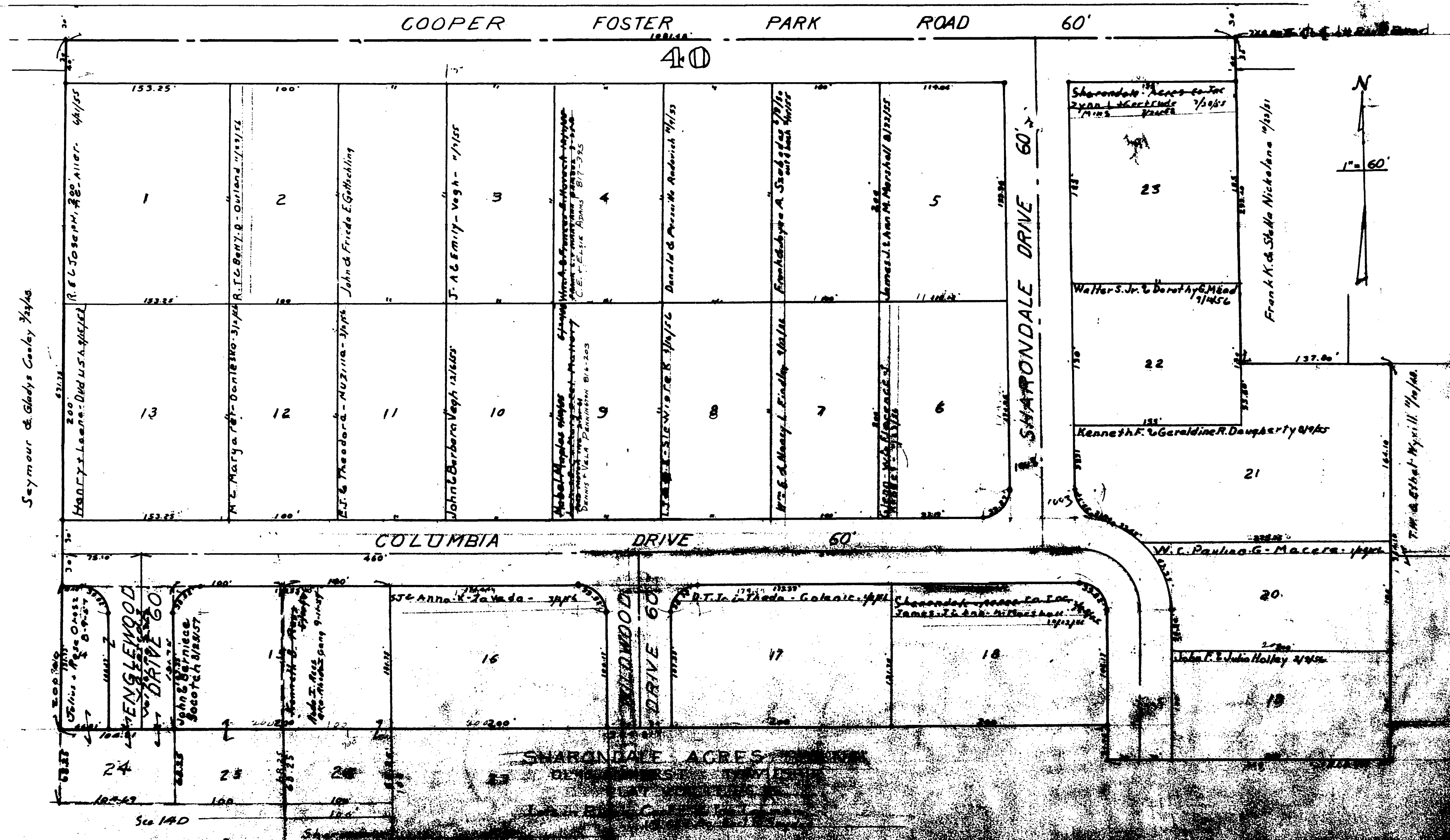
COPYRIGHT 1962
U.S. CODE, TITLE 17
LOHAIN COUNTY, OHIO
Reproduced by,
Allied Microfilm Corp.
Akron, Ohio



COPYRIGHT 1948
U.S. GDS., TITLE 17
LOHAIN COUNTY, OHIO
Reproduced by,
Axiom Microfilm Corp.
Akron, Ohio

COPYRIGHT 1962
 U.S. COIN, TITLE 17
 LOHAIN COUNTY, OHIO
 Reproduced by,
 Allied Microfilm Corp.
 Akron, Ohio

MAP OF
 AMHERST TOWNSHIP

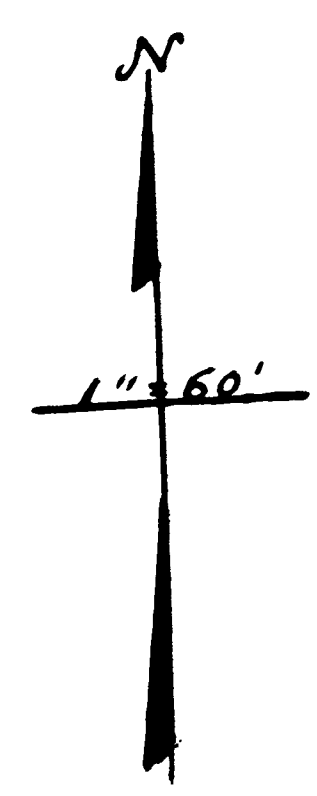


SHARONDALE ACRES SUB. NO 2.

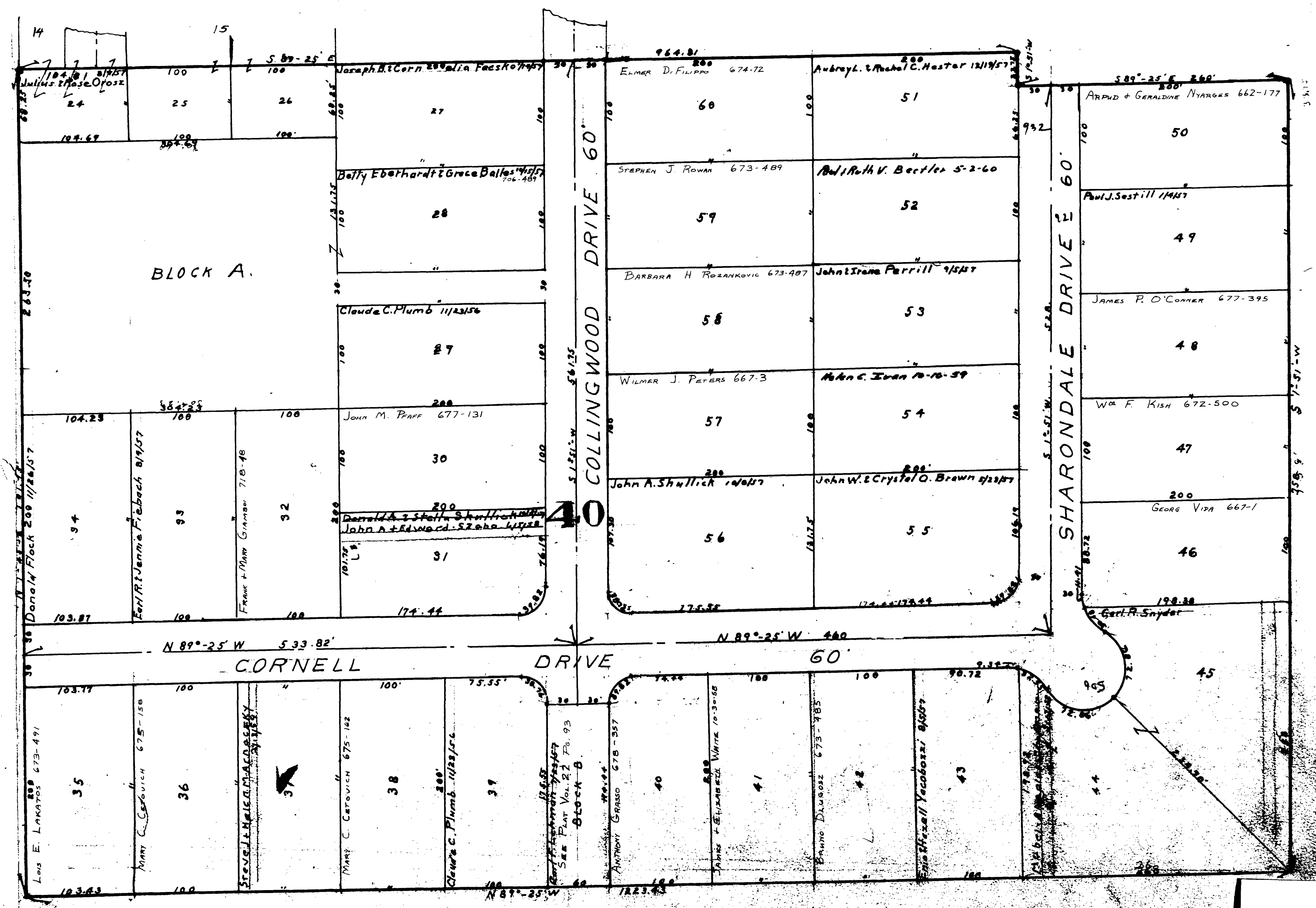
Vol 19 Pg. 3

ORIGINAL LOT 40 AMHERST TWP.

SCALE 1" = 60'



See 14C



MAP OF AMHERST TOWNSHIP

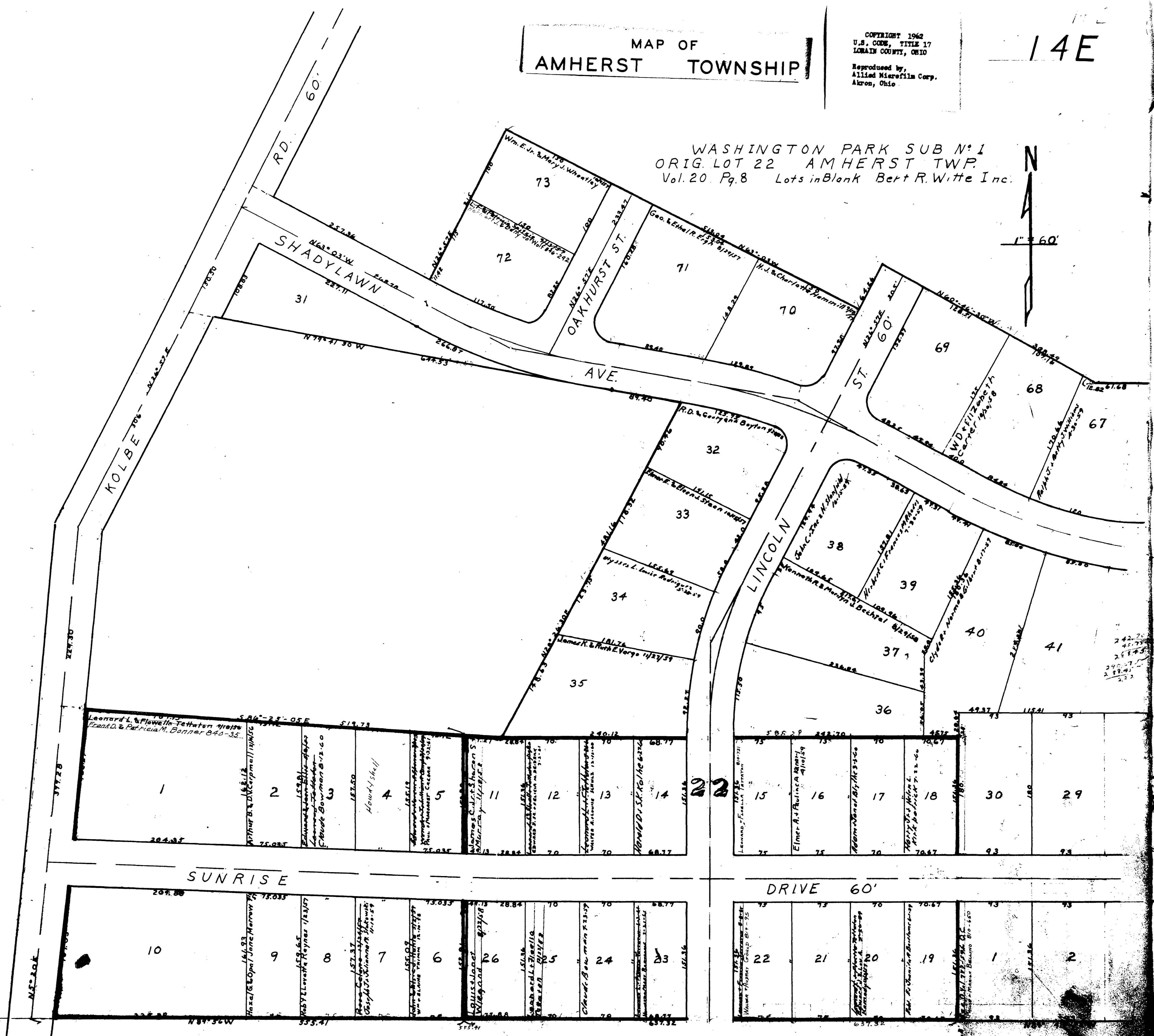
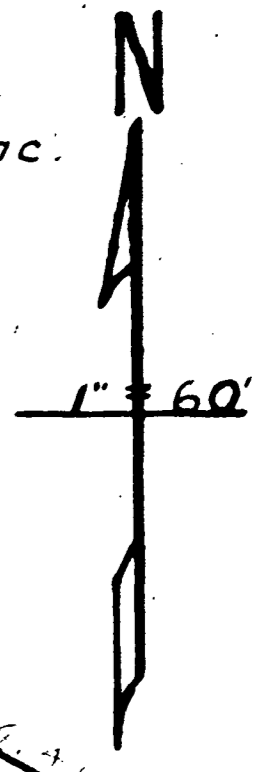
COPYRIGHT 1962
U.S. GEOLOGICAL SURVEY, TITLE 17
LORAIN COUNTY, OHIO
Reproduced by,
Allied Microfilm Corp.
Akron, Ohio

MAP OF
AMHERST TOWNSHIP

COPYRIGHT 1962
U.S. CODE, TITLE 17
LORAIN COUNTY, OHIO
Reproduced by,
Allied Microfilm Corp.
Akron, Ohio

14E

WASHINGTON PARK SUB N:1
ORIG. LOT 22 AMHERST TWP.
Vol. 20 Pg. 8 Lots in Blank Bert R. Witte Inc.



RITZLER SUB N:1
Vol. 19 Pg. 16A

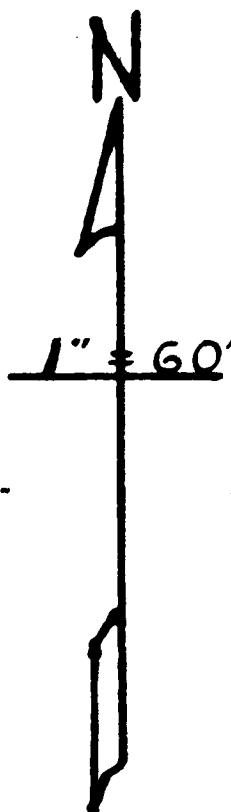
Lots in Blank J. Gerald & Mildred Ritzler

RITZLER SUB N:2
Vol. 20 Pg. 18

MAP OF
AMHERST TOWNSHIP

COPYRIGHT 1962
U.S. CODE, TITLE 17
LOHAIN COUNTY, OHIO
Reproduced by,
Allied Microfilm Corp.
Akron, Ohio

14F



WASHINGTON PARK SUB. N^o 1
ORIG. LOT 22 AMHERST TWP.
VOL. 20 Pg. 8 Lots in Blank Bert R. Witte Inc.



City of
Amherst
837-300