

TOWNE PLAT  
Vol 2, Pg 21

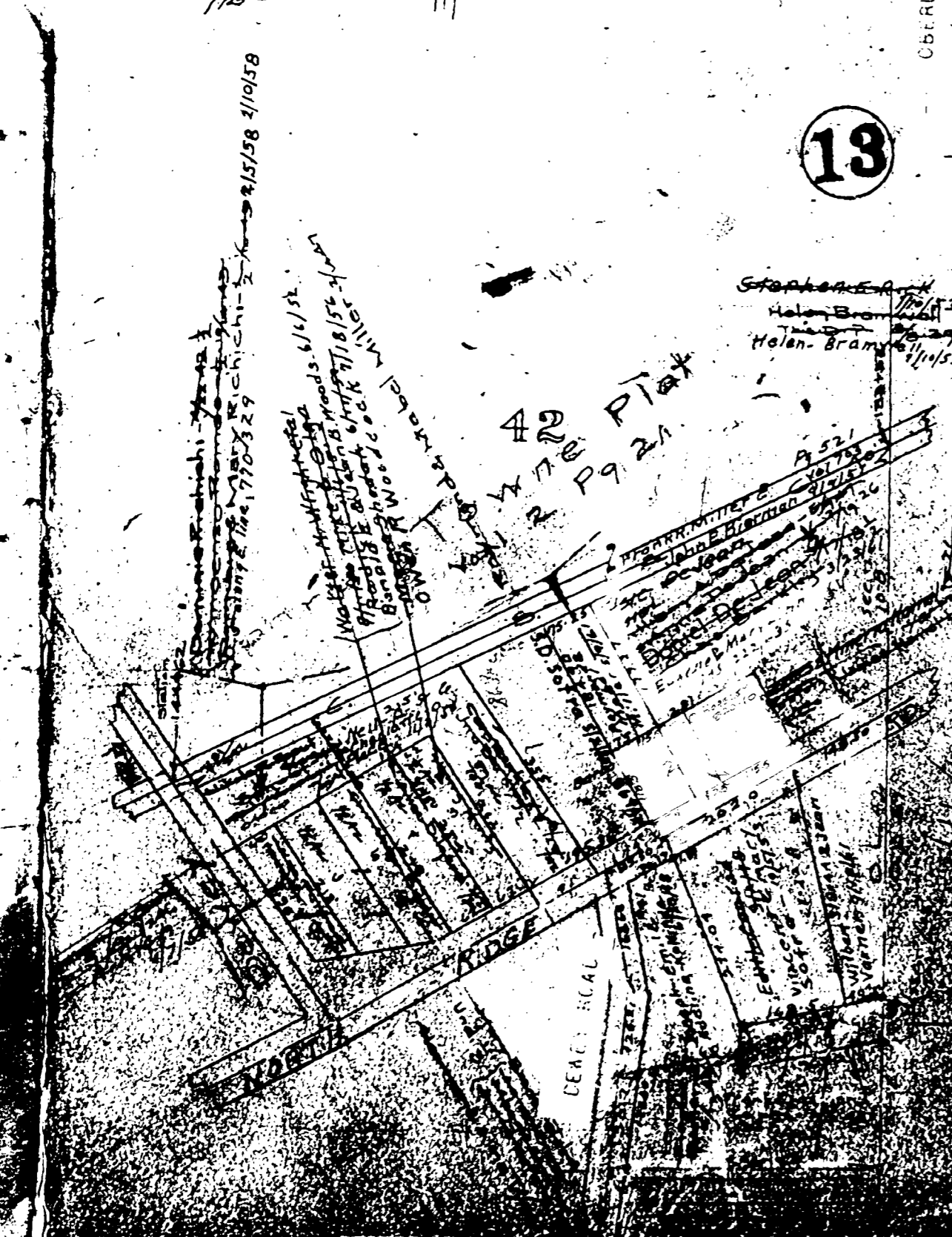
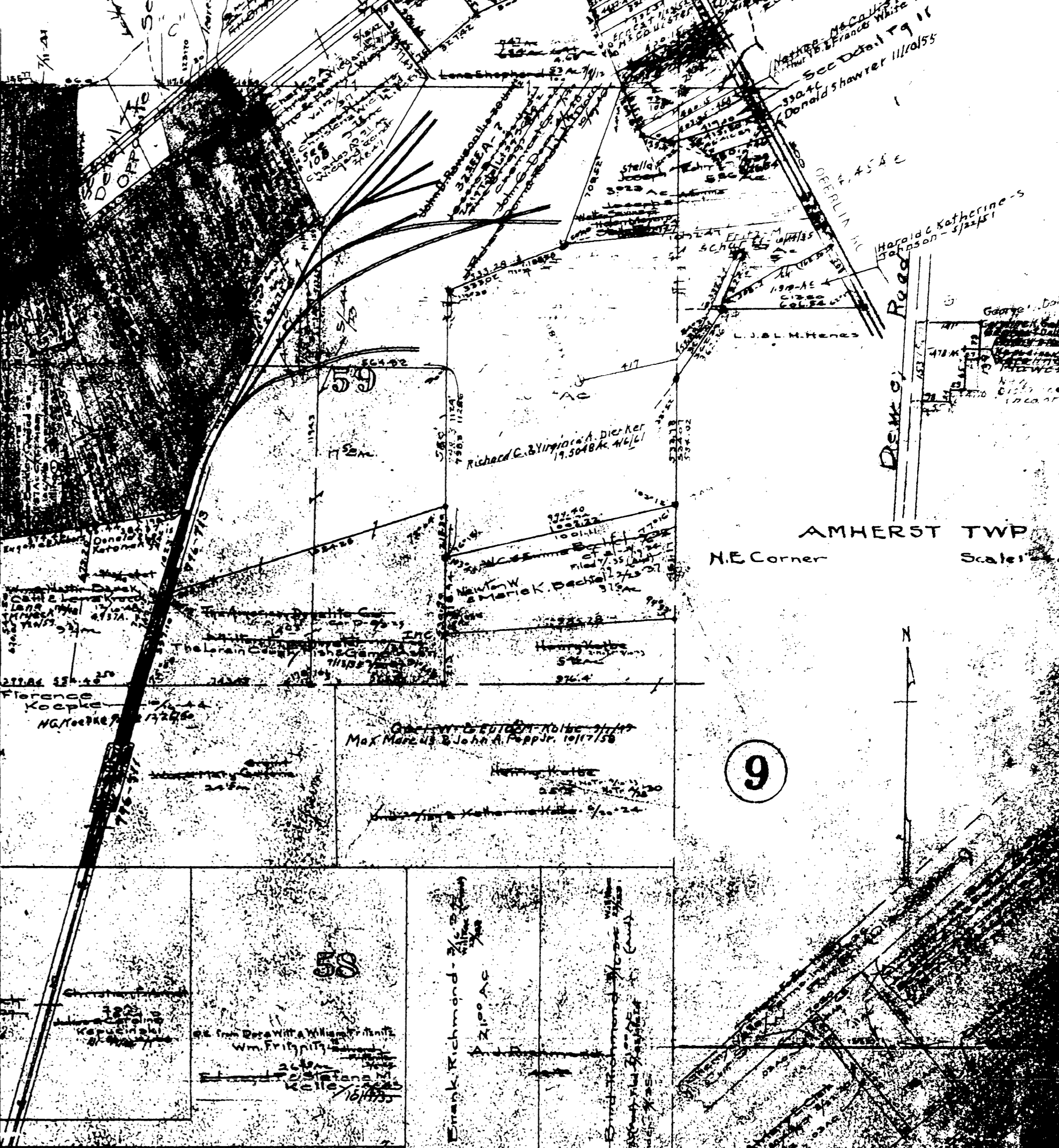
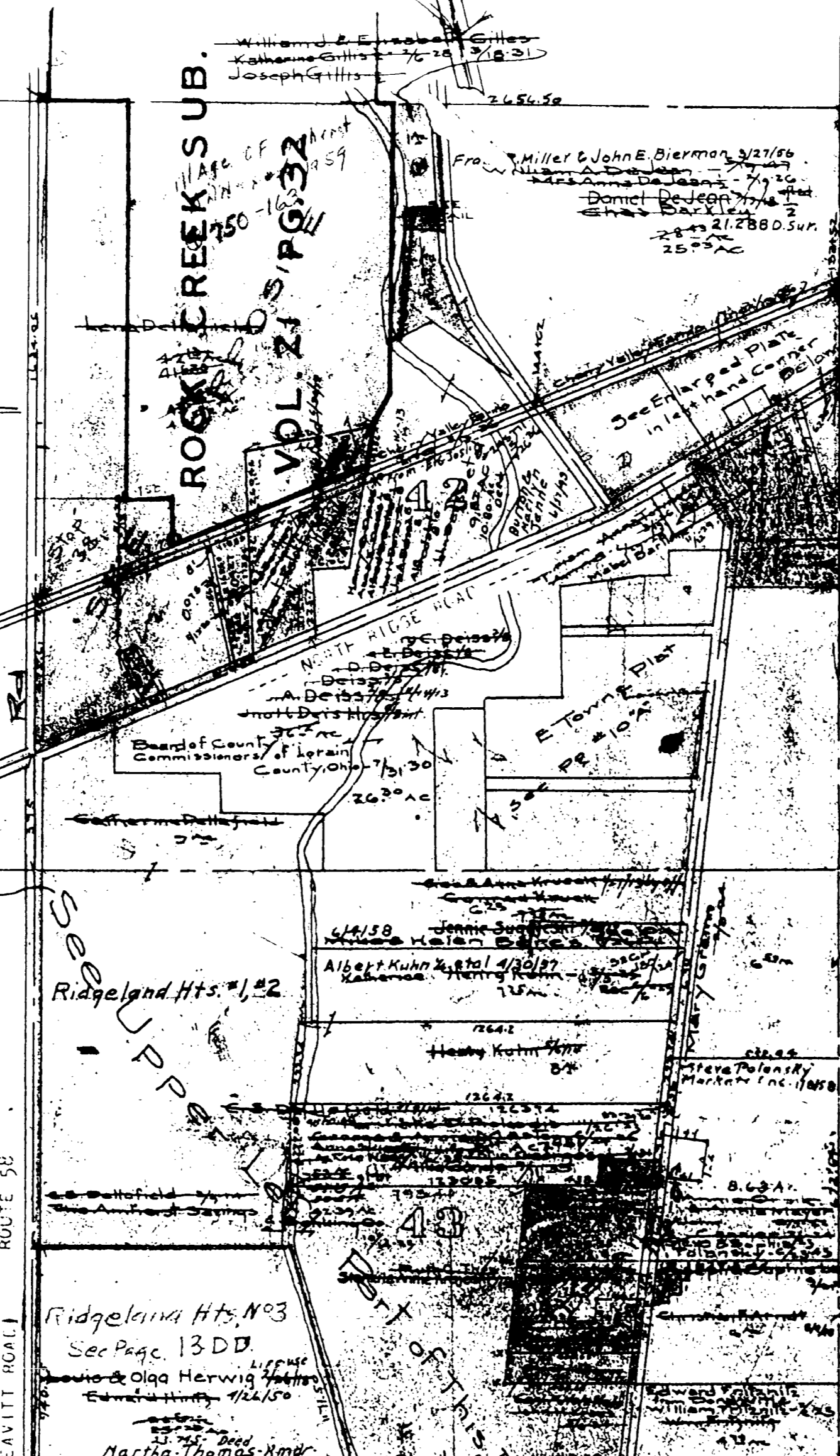
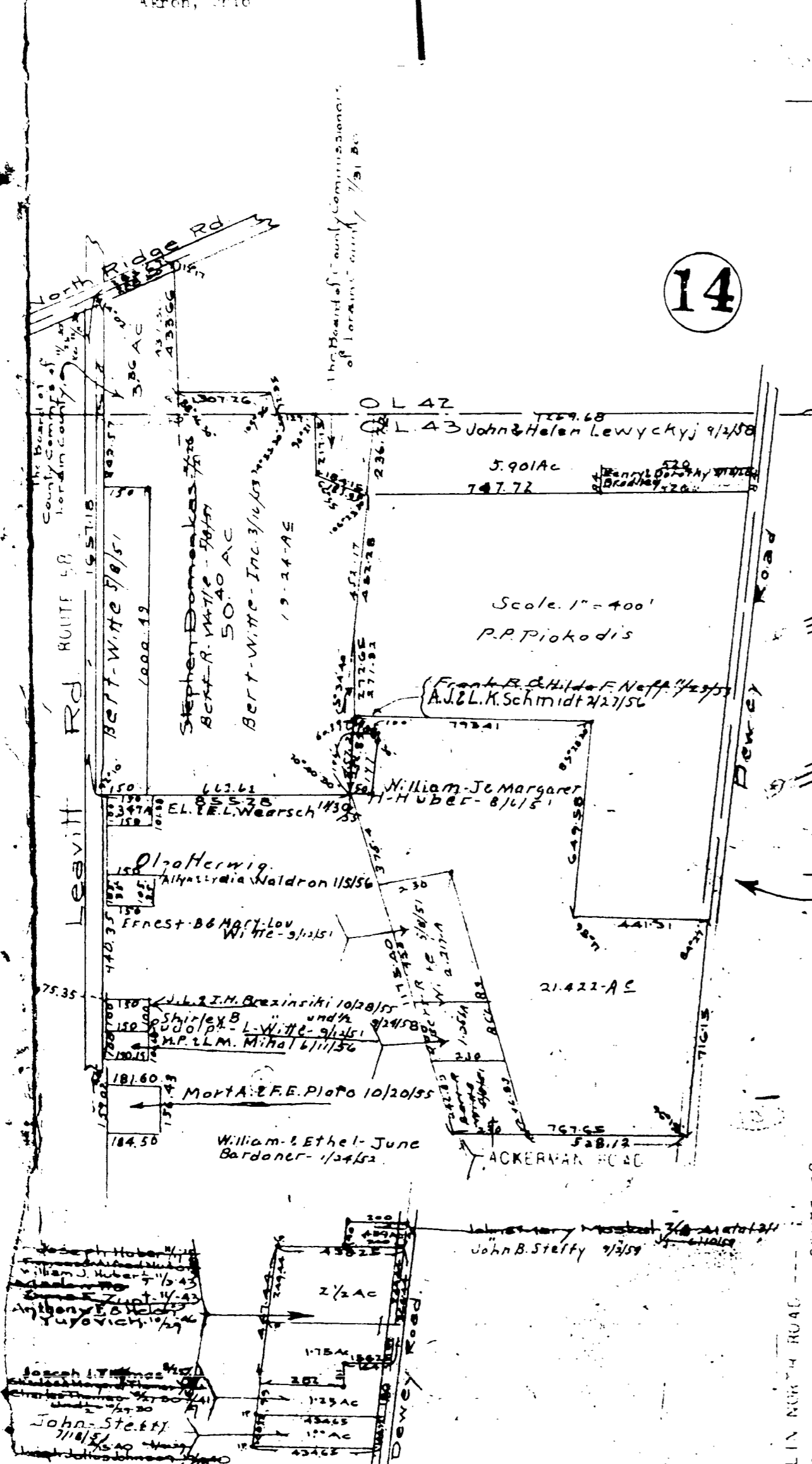
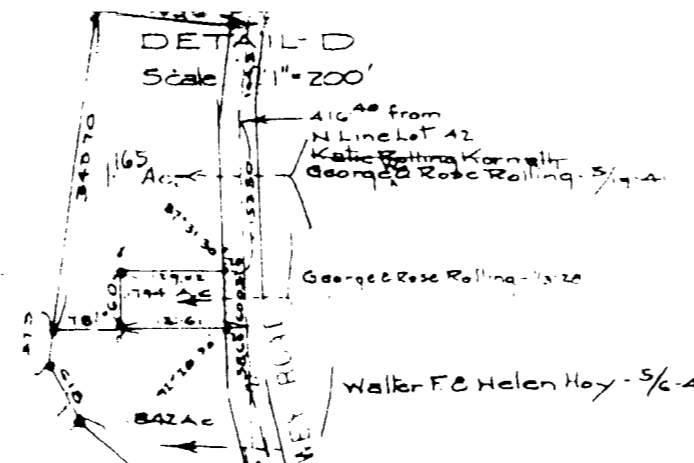
AMHERST TWP  
NE Corner  
Scale 1"=400'

DETAILS  
Scale 1"=100'

# MAP OF AMHERST TOWNSHIP

COPYRIGHT 1962  
U.S. CODE, TITLE 16  
CORAN TO WY, 3103

Reproduced by:  
Allied Microfilm Corp.  
Akron, Ohio



38876  
12177 17127  
2157A  
37937

10

9

14

11

13

AMHERST TWP  
NE Corner  
Scale 1"=400'





COPYRIGHT 1962  
U.S. CODE, TITLE 17  
LOWAIN COUNTY, OHIO

Reproduced by,  
Allied Microfilm Corp.  
Akron, Ohio

# MAP OF AMHERST TOWNSHIP

## AMHERST TWP E. TOWNE PLAT

Vol. 2, Pg. 16      Scale 1" = 40'



Cerebral Palsy of Lot 10 Area  
First Presbyterian Church  
of Lorain  
5809345

Board of County Commissioners of  
Lorain County, Ohio  
7/31/30

Ellsworth Co. Jan. 14  
Towne - 1852

