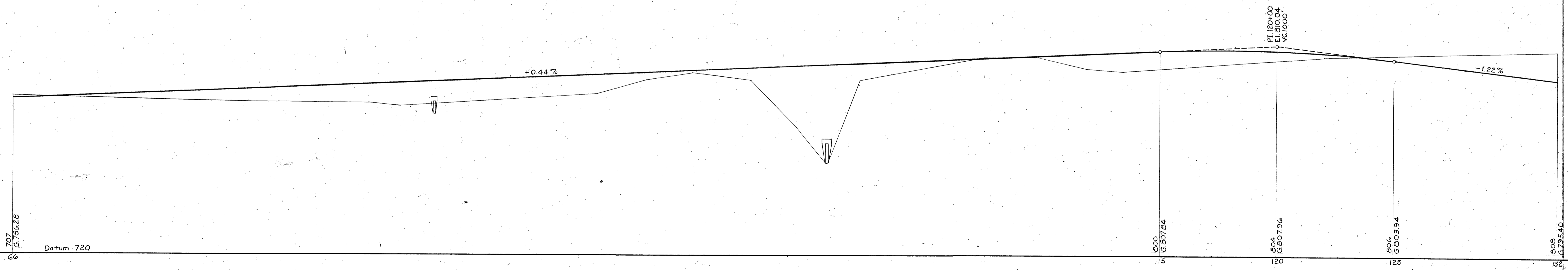
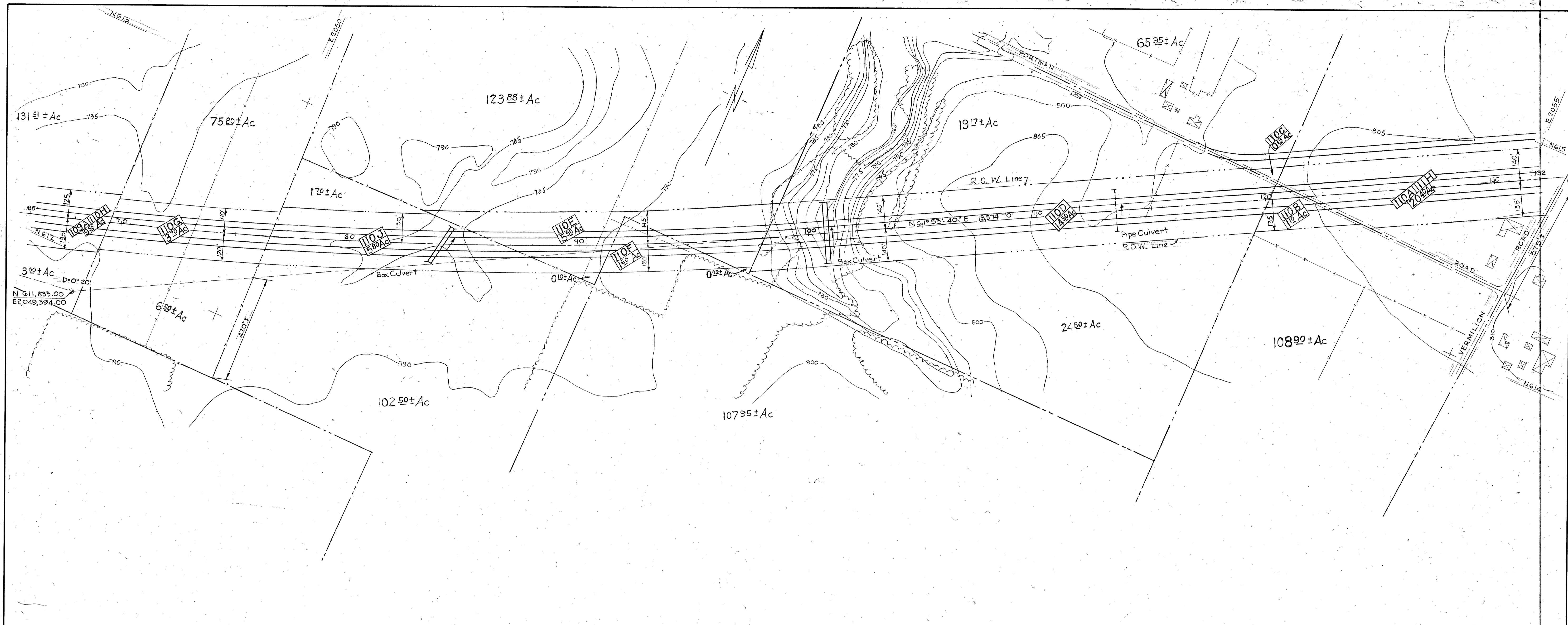


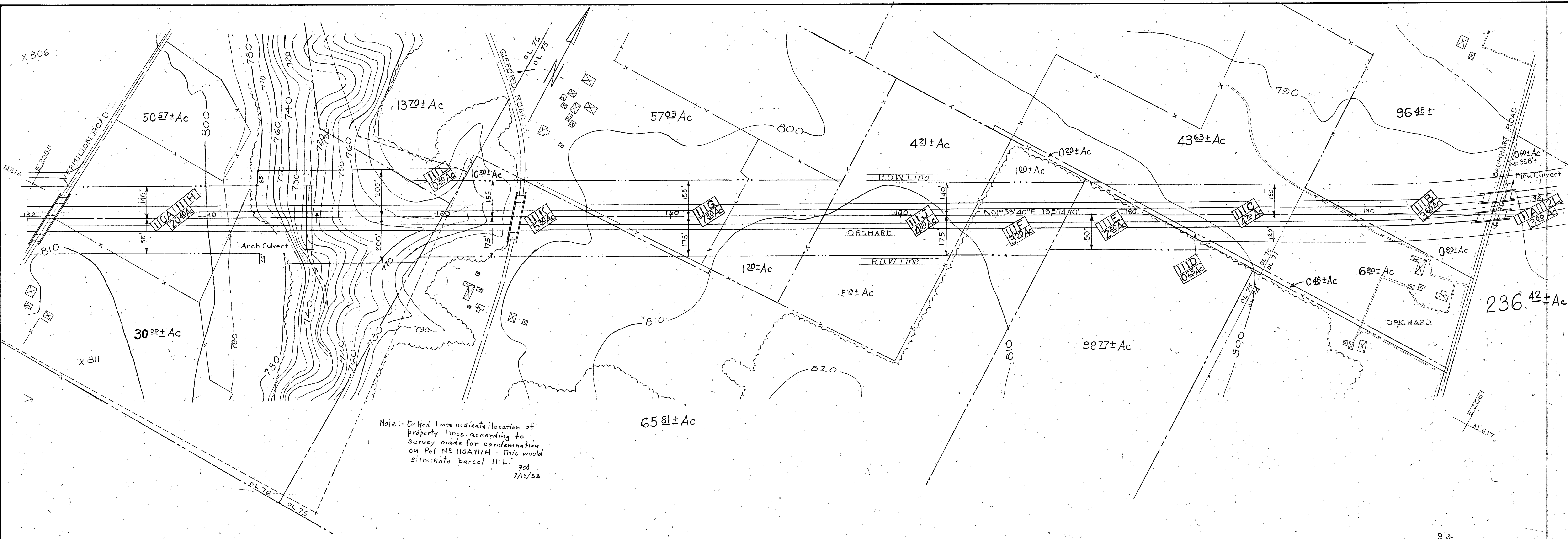
STATE OF OHIO DEPARTMENT OF HIGHWAYS OHIO TURNPIKE PLAN AND PROFILE, STA. 0 TO STA. 66 LORAIN COUNTY		
JUNE, 1951	J. E. GREINER CO. - CONSULTING ENGINEERS BALTIMORE, MARYLAND	DWG. NO. 109



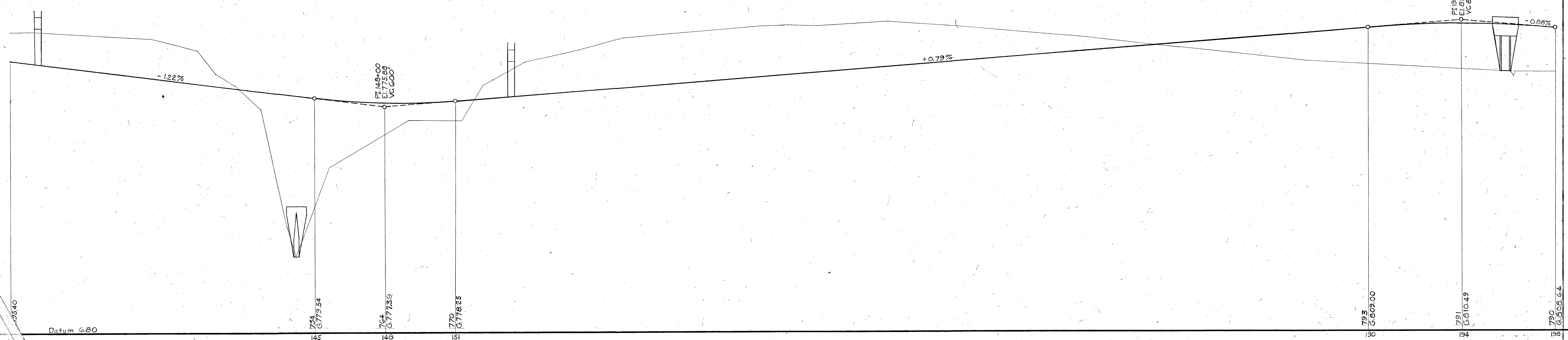
SCALE
HOR. 1"=200FT. VERT. 1"=20FT.

STATE OF OHIO
DEPARTMENT OF HIGHWAYS
OHIO TURNPIKE
PLAN AND PROFILE, STA. 66 TO STA. 132
LORAIN COUNTY

JUNE, 1951	J. E. GRINER CO.—CONSULTING ENGINEERS BALTIMORE, MARYLAND	DWG. NO. 110
------------	--	--------------



Note: - Dotted lines indicate location of property lines according to survey made for condemnation on P.C. No. 110A111H - This would eliminate parcel 111L.
 764
 7/15/53



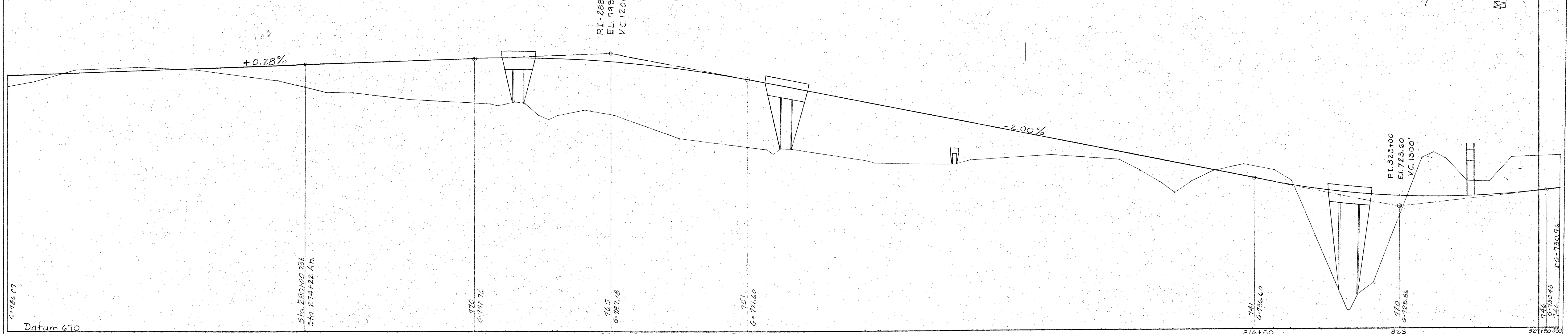
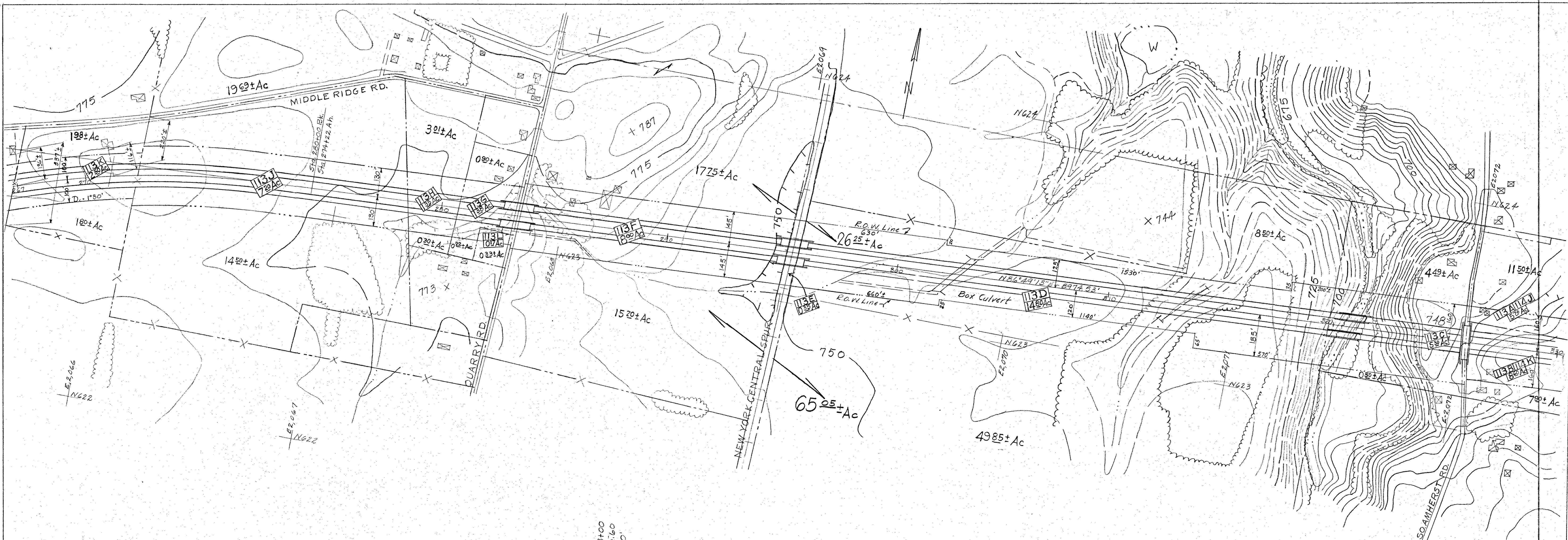
SCALE
 HOR. 1"=200FT. VERT. 1"=20FT.

REVISIONS		
NO.	DATE	PARCEL NO.

1		Alignment - Sta. 132+00 to Sta. 198+00		11/29/52	H.S.M.
NO.	REVISION	DATE	BY		

STATE OF OHIO
 DEPARTMENT OF HIGHWAYS
 OHIO TURNPIKE
 PLAN AND PROFILE, STA. 132 TO STA. 198
 LORAIN COUNTY

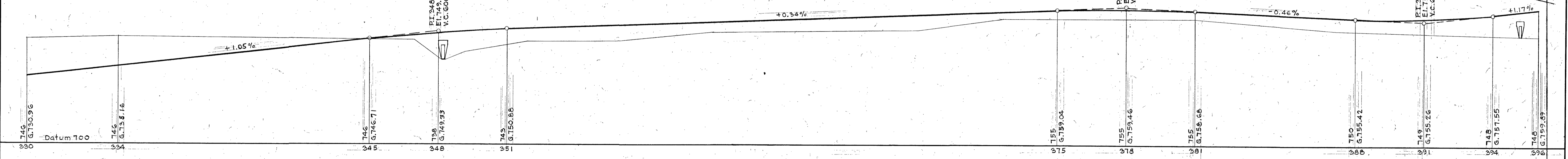
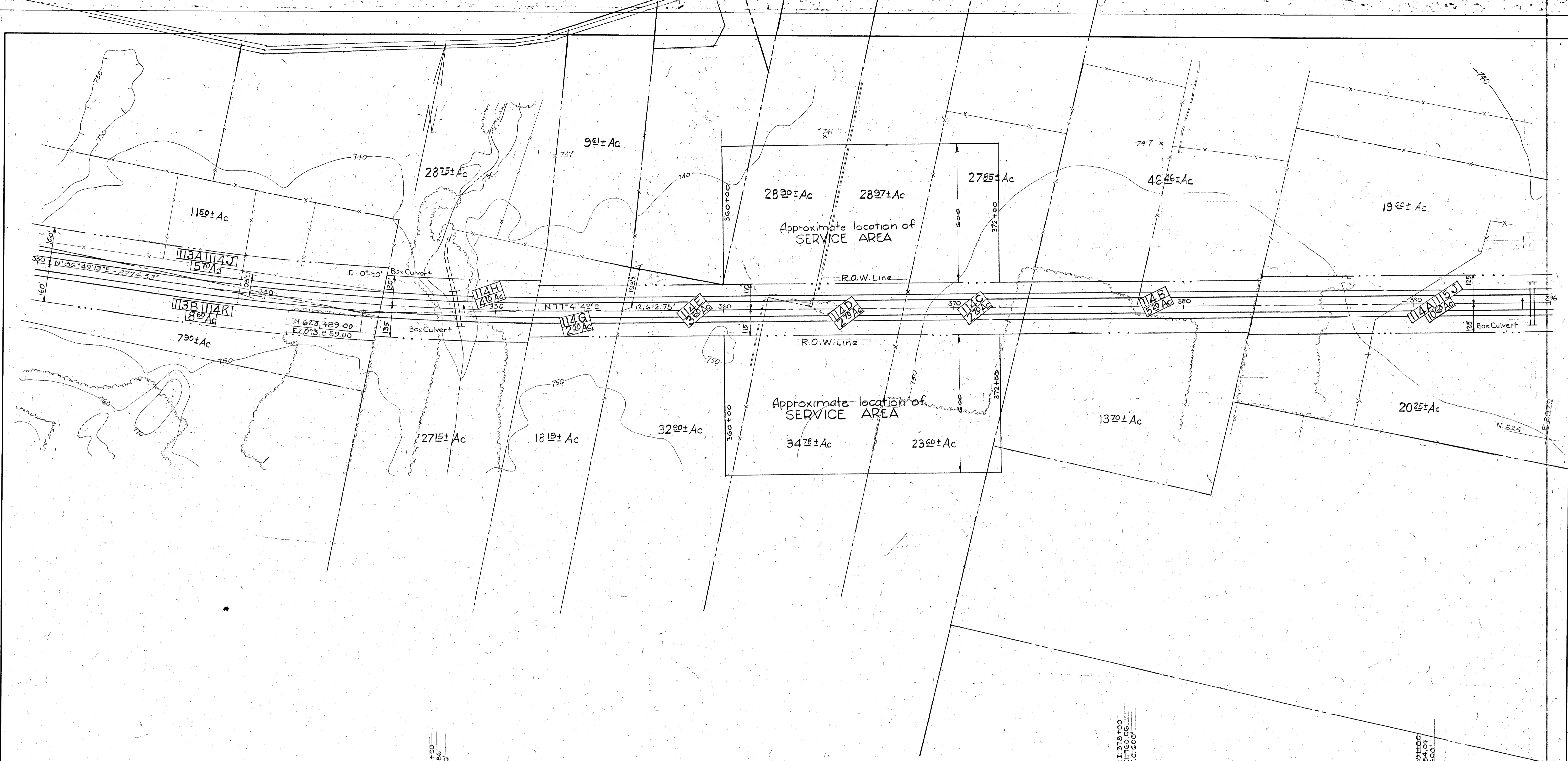
JUNE, 1951 J. E. GREINER CO. - CONSULTING ENGINEERS BALTIMORE, MARYLAND DWG. NO. 111



REVISIONS			
DATE	PARCEL NO.	DATE	PARCEL NO.
2-19-53	D.F. Acreage Add.		

STATE OF OHIO
DEPARTMENT OF HIGHWAYS
OHIO TURNPIKE
PLAN AND PROFILE, STA. 267 TO STA. 330
LORAIN COUNTY

JUNE, 1951 J. E. GREINER CO. - CONSULTING ENGINEERS BOSTON, MASSACHUSETTS DWG. NO. 113



REVISIONS.

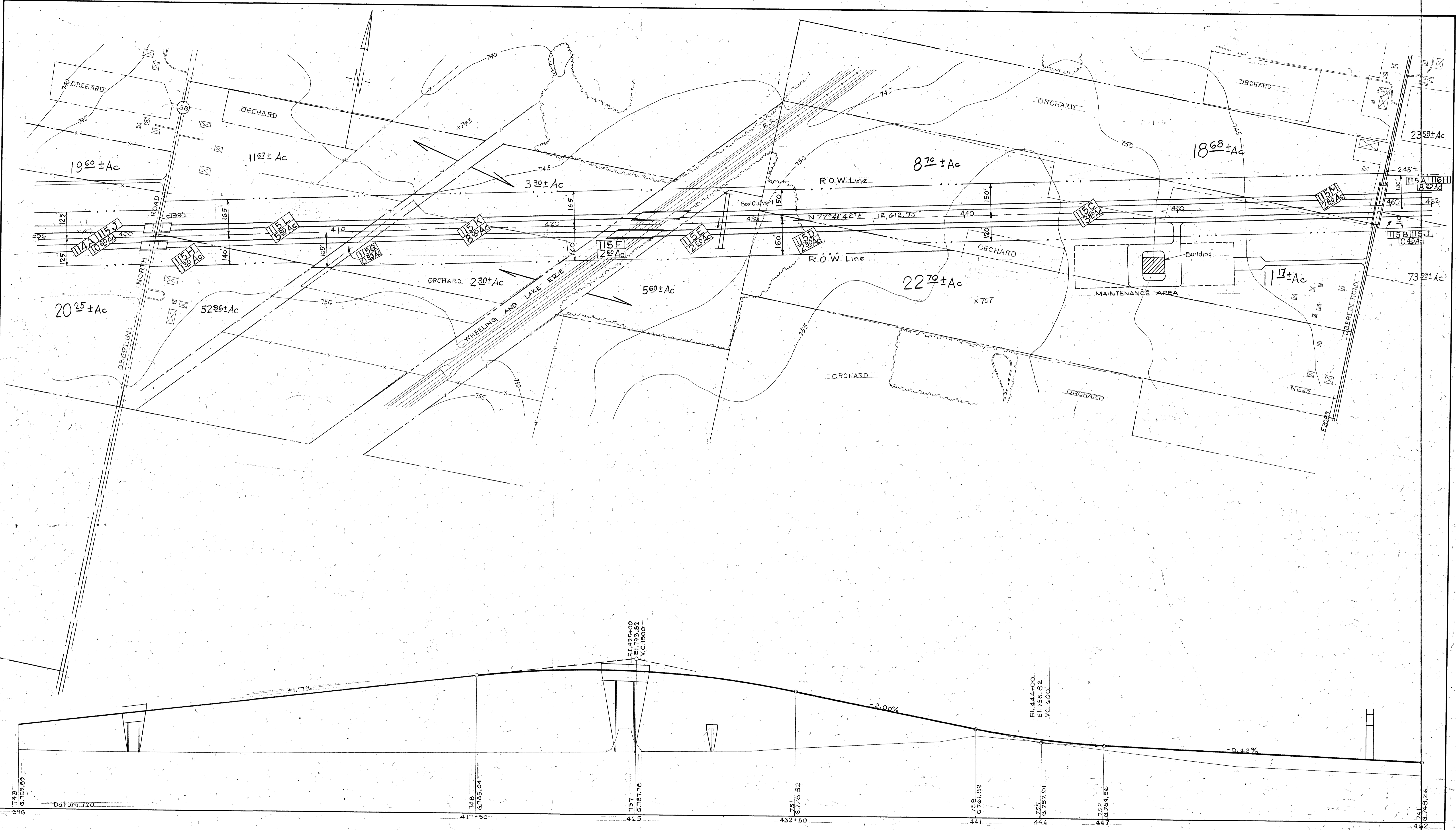
DATE	PARCEL N ^o	DATE	PARCEL N ^o
4-2-53	F - Yielded		
2/24/54	SERVICE AREA ADDED		

SCALE
HOR. 1"=200 FT. VERT. 1"=20 FT.

N ^o	REVISION	DATE	BY
1	Changed tangent distance from 724.17 to 891.53 due to alignment change. Sta. 181+50 to Sta. 313+00 ±.	1/25/52	WAM

STATE OF OHIO
DEPARTMENT OF HIGHWAYS
OHIO TURNPIKE
PLAN AND PROFILE, STA 330 TO STA. 396
LORAIN COUNTY

JUNE, 1954 J. E. GREINER CO. - CONSULTING ENGINEERS
BALTIMORE, MARYLAND. DWG. NO. 114



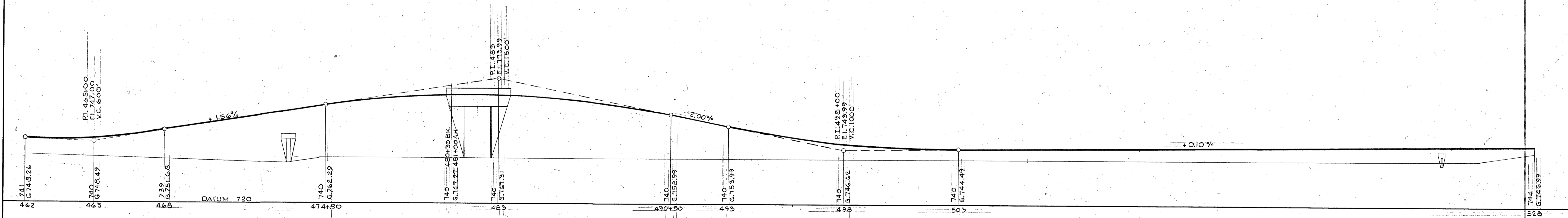
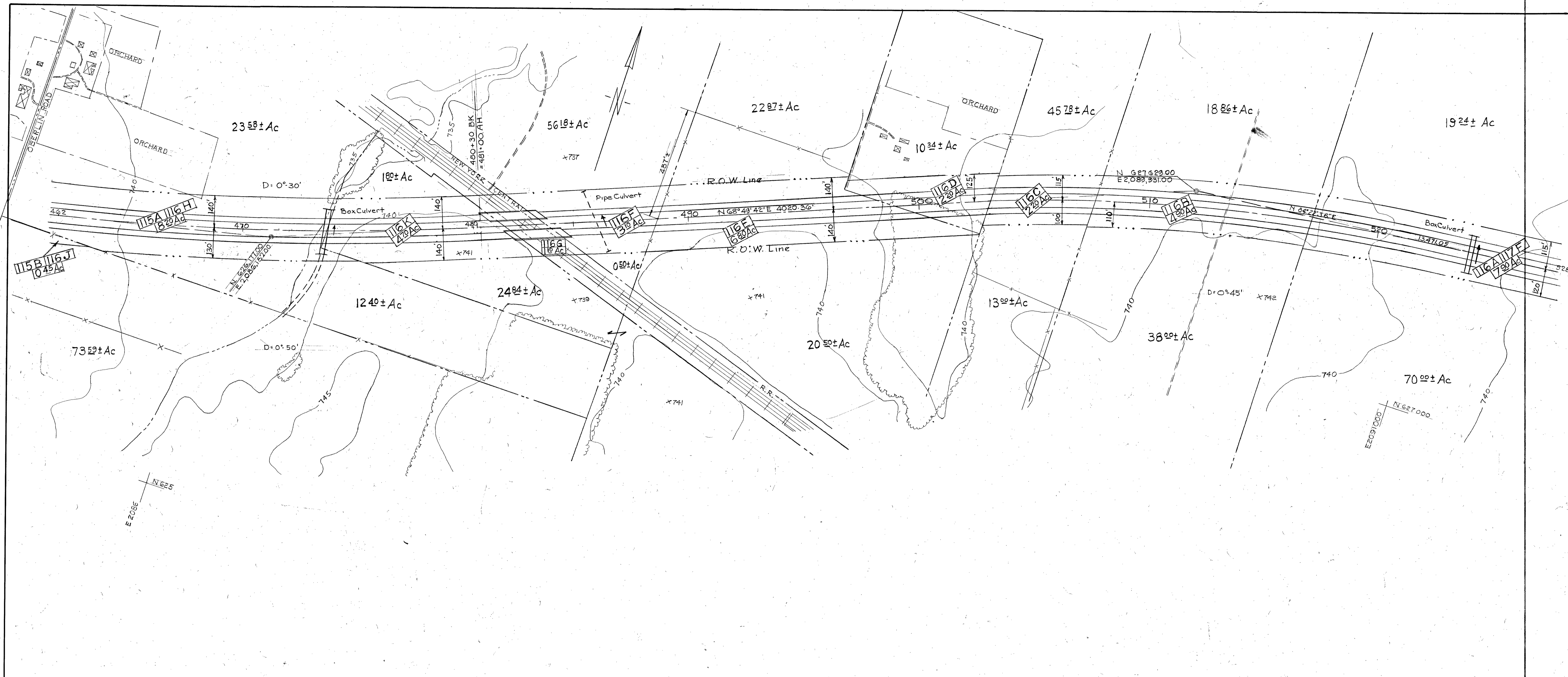
REVISIONS

DATE	PARCEL NO.	DATE	PARCEL NO.
2-19-53	C-D-M Merge Added		
4-13-53	G - Revised		

SCALE
HOR. 1" = 200 FT. VERT. 1" = 20 FT.

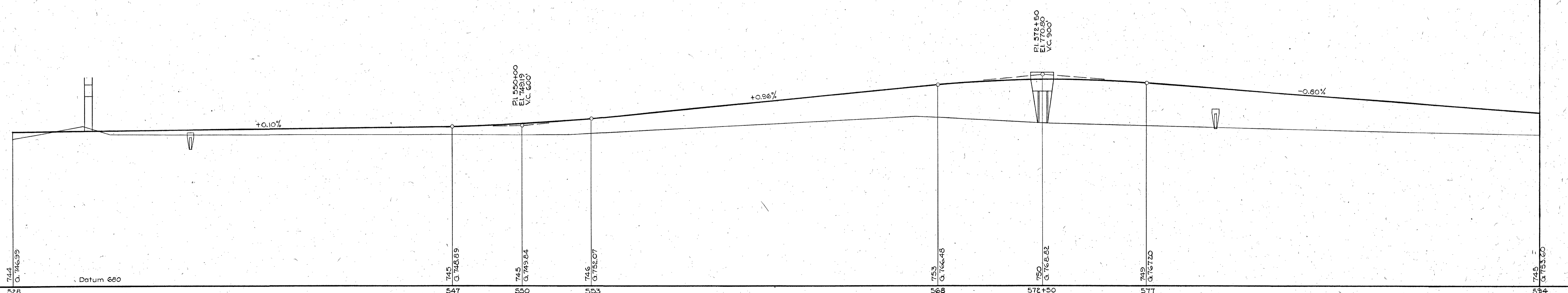
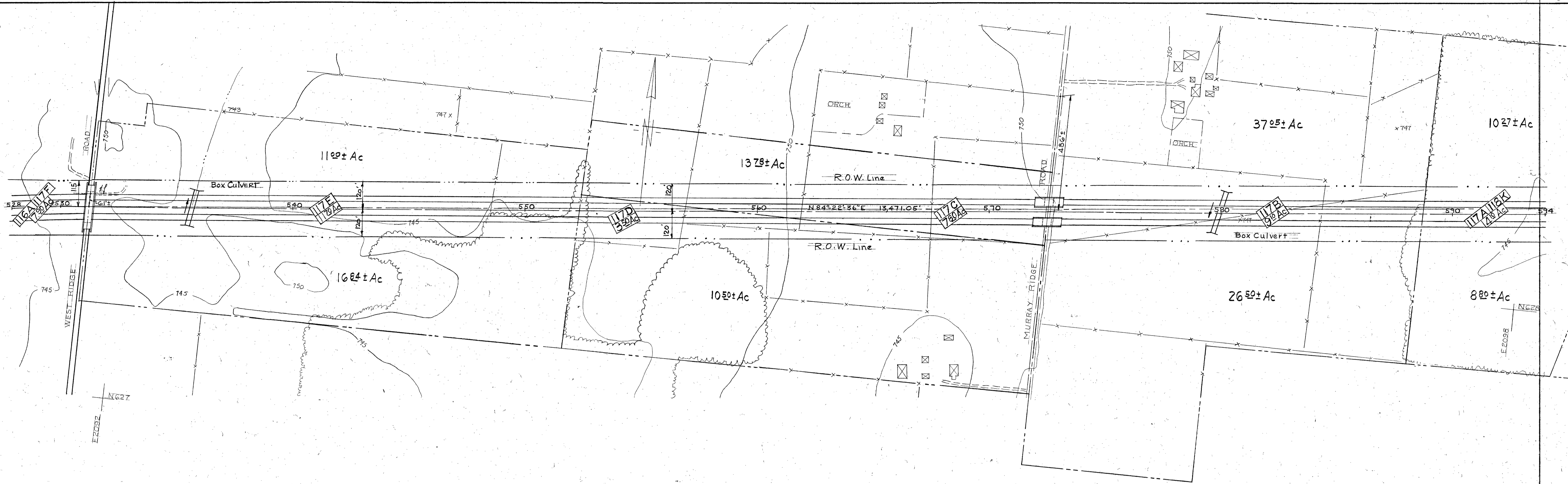
STATE OF OHIO
DEPARTMENT OF HIGHWAYS
OHIO TURNPIKE
PLAN AND PROFILE, STA. 396 TO STA. 462
LORAIN COUNTY

JUNE, 1951 J. E. GREYER CO. - CONSULTING ENGINEERS
BALTIMORE, MARYLAND DWG. NO. 115



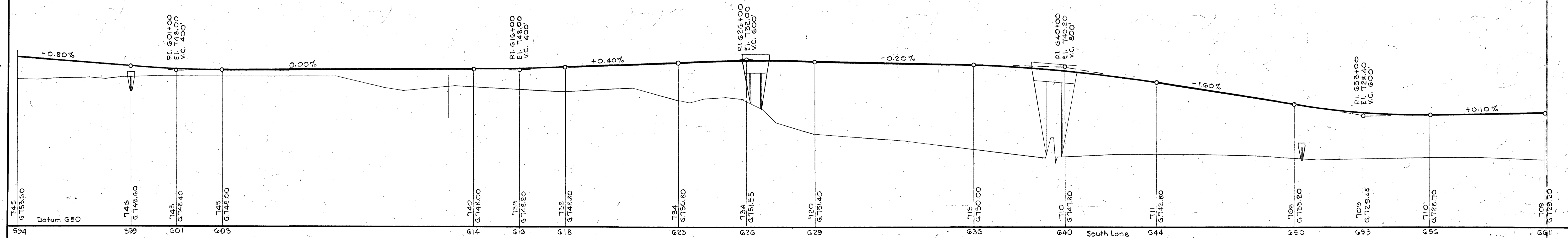
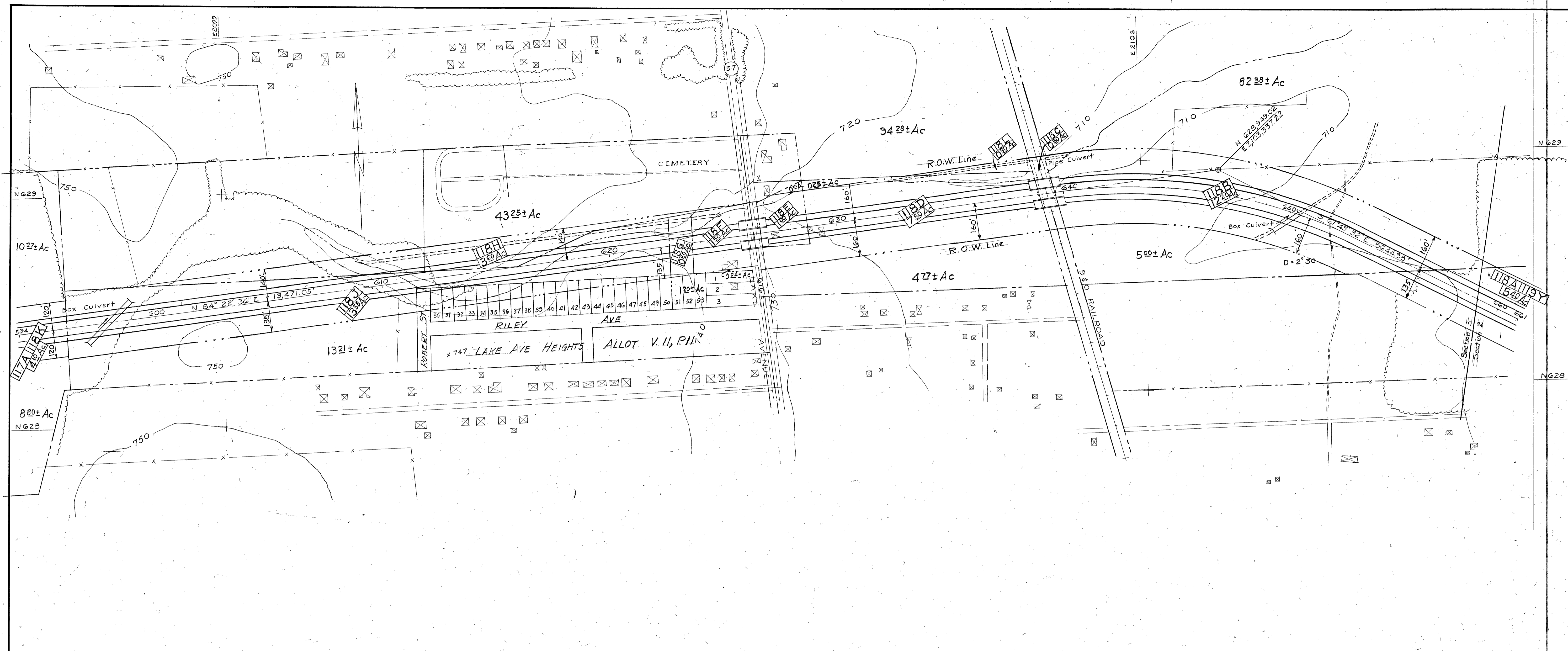
SCALE
HOR. 1"=200 FT. VERT. 1"=20 FT.

STATE OF OHIO DEPARTMENT OF HIGHWAYS OHIO TURNPIKE PLAN AND PROFILE, STA. 462 TO STA. 528 LORAIN COUNTY		
JUNE, 1951	J. E. GREINER CO. - CONSULTING ENGINEERS BALTIMORE, MARYLAND	DWG. NO. 116



SCALE
HOR. 1"=200 FT. VERT. 1"=20 FT.

STATE OF OHIO		
DEPARTMENT OF HIGHWAYS		
OHIO TURNPIKE		
PLAN AND PROFILE, STA. 528 TO STA. 594		
LORAIN COUNTY		
JUNE, 1951	J. E. GREIFER CO. - CONSULTING ENGINEERS BALTIMORE, MARYLAND	DWG. NO. 117

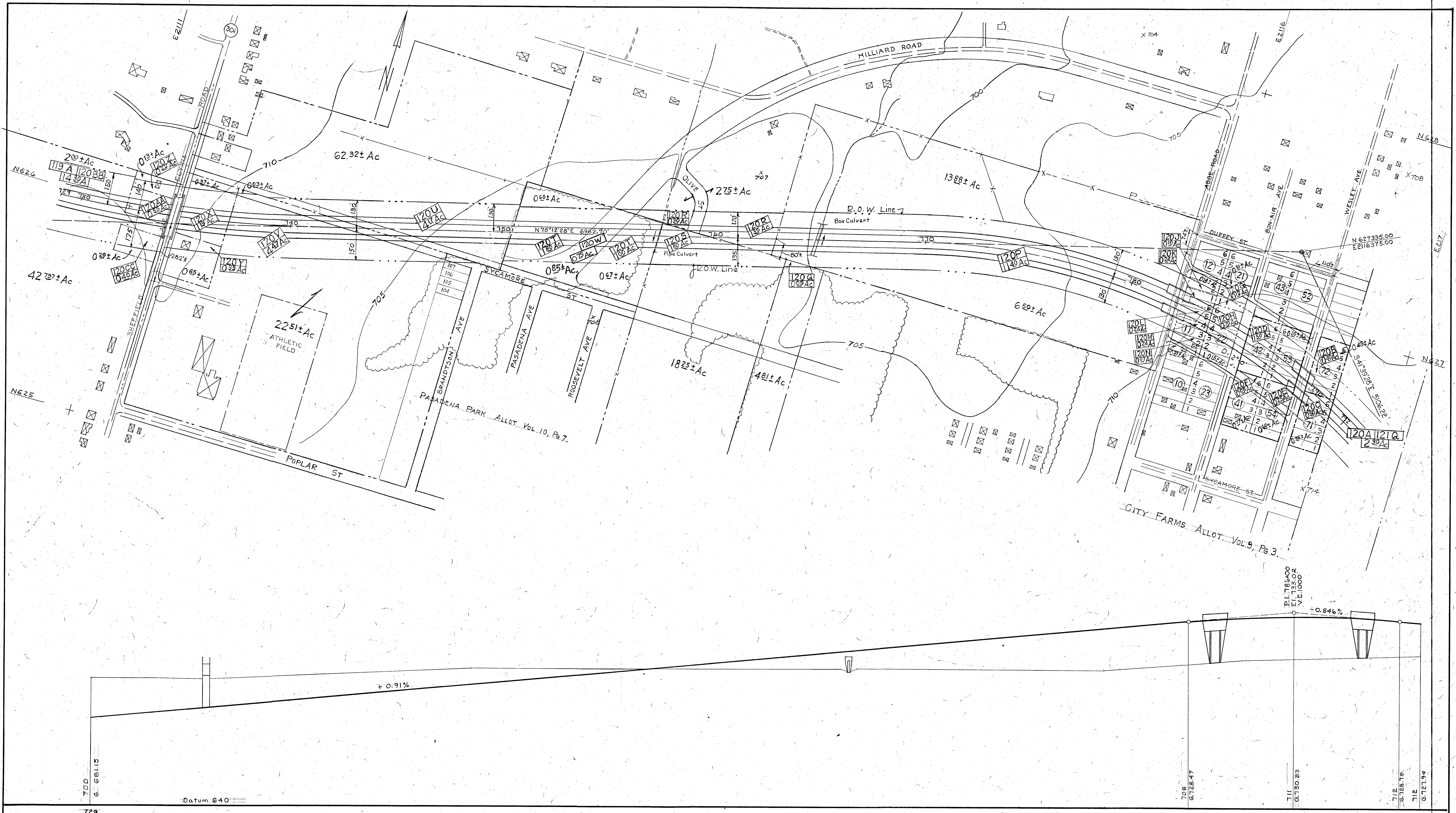


REVISIONS			
DATE	PARCEL NO.	DATE	PARCEL NO.

SCALE
HOR. 1" = 200 FT. VERT. 1" = 20 FT.

STATE OF OHIO
DEPARTMENT OF HIGHWAYS
OHIO TURNPIKE
PLAN AND PROFILE, STA. 594 TO STA. 661
LORAIN COUNTY

JUNE, 1951 J. E. GREINER CO. — CONSULTING ENGINEERS BALTIMORE, MARYLAND DWG. NO. 118



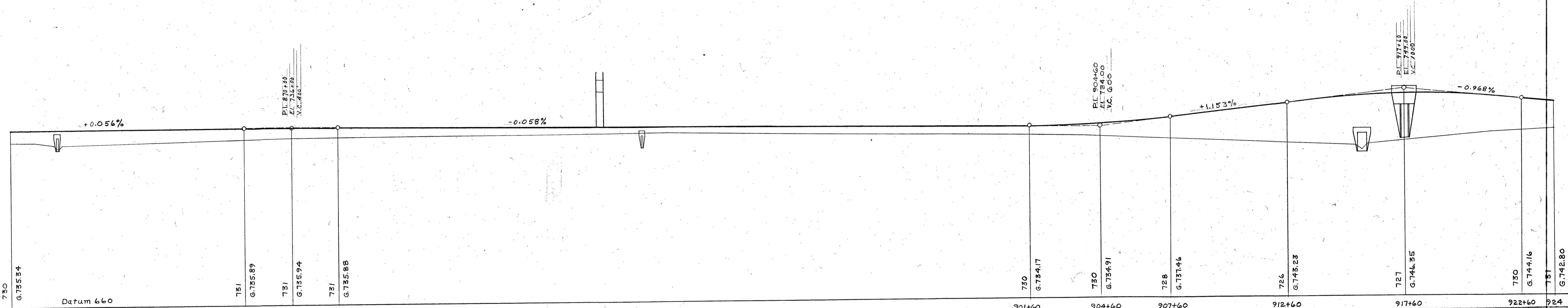
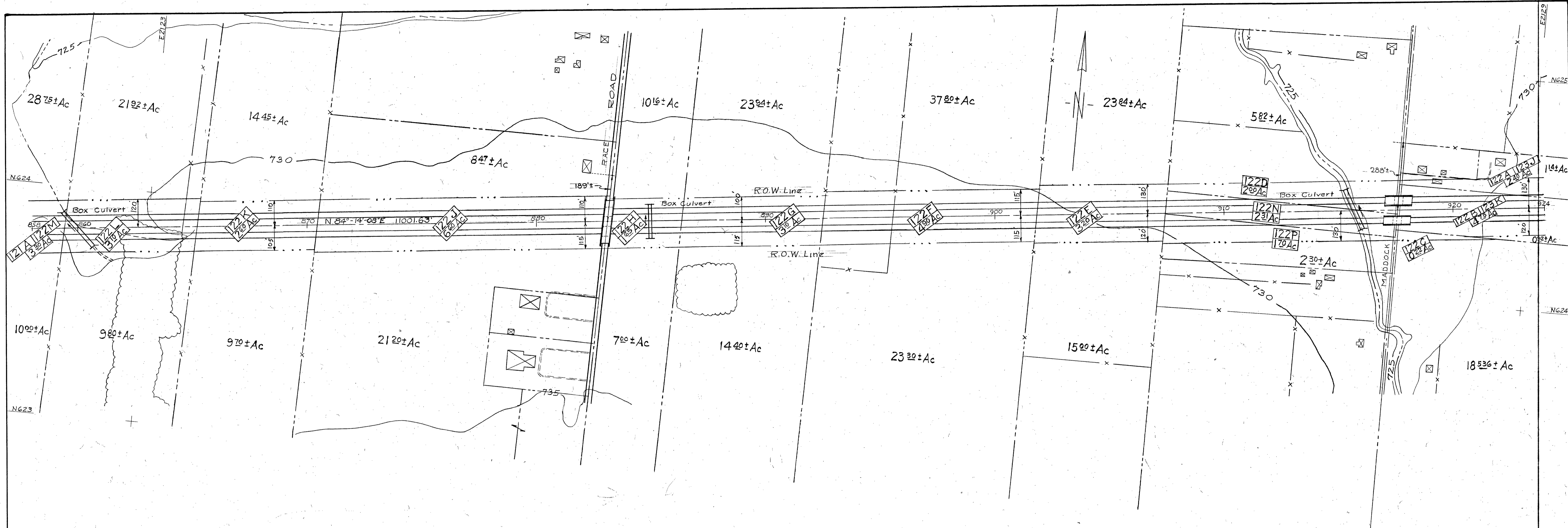
REVISIONS

DATE	PARCEL NO.	DATE	PARCEL NO.

SCALE
HOR. 1"=200 FT. VERT. 1"=20 FT.

STATE OF OHIO
DEPARTMENT OF HIGHWAYS
OHIO TURNPIKE
PLAN AND PROFILE, STA. 729 TO STA. 792
LORAIN COUNTY

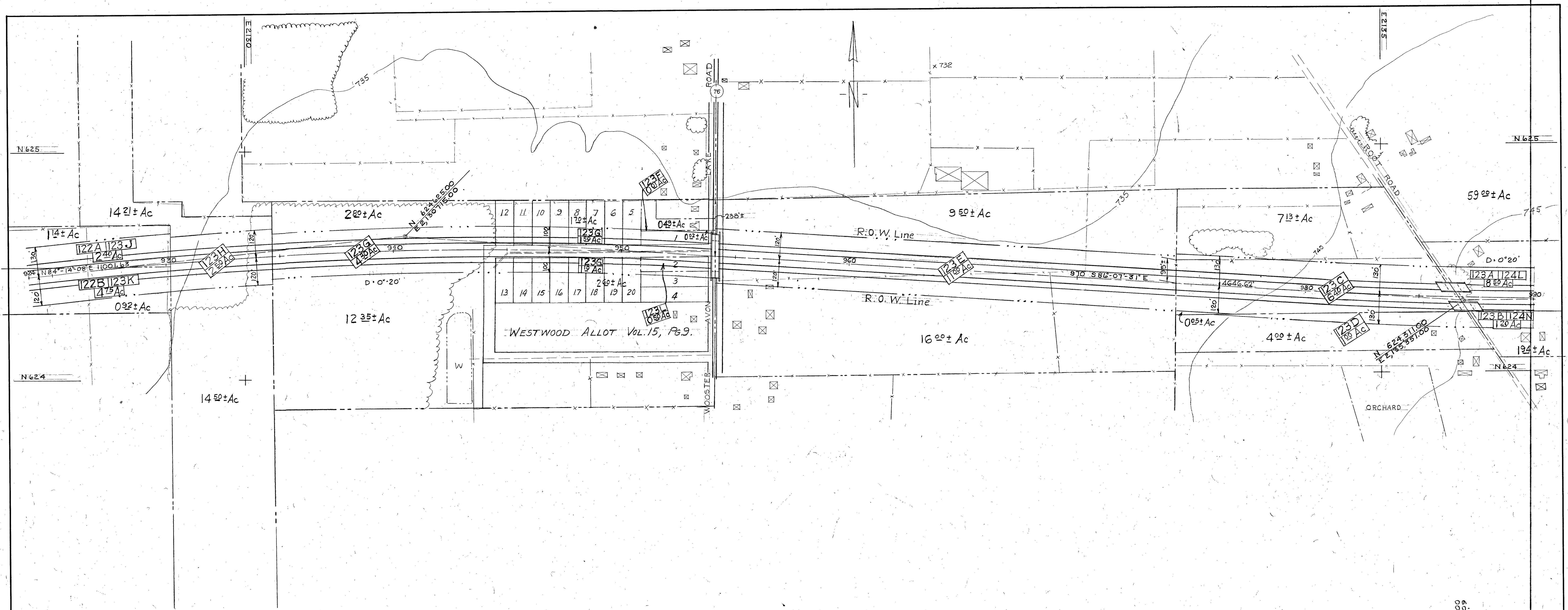
JUNE, 1951 | J. E. GREINER CO. - CONSULTING ENGINEERS | BALTIMORE, MARYLAND | DWG. NO. 120



SCALE
HOR. 1"=200 FT. VERT. 1"=20 FT.

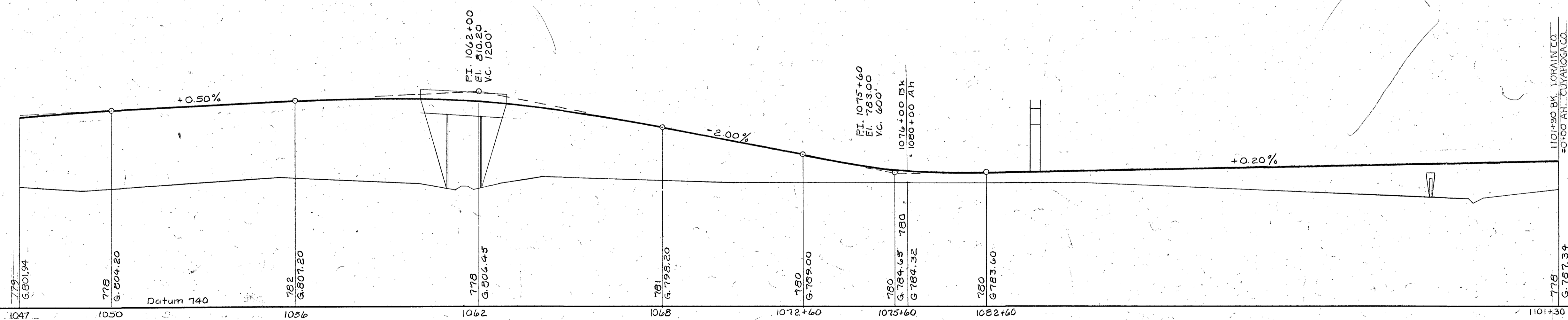
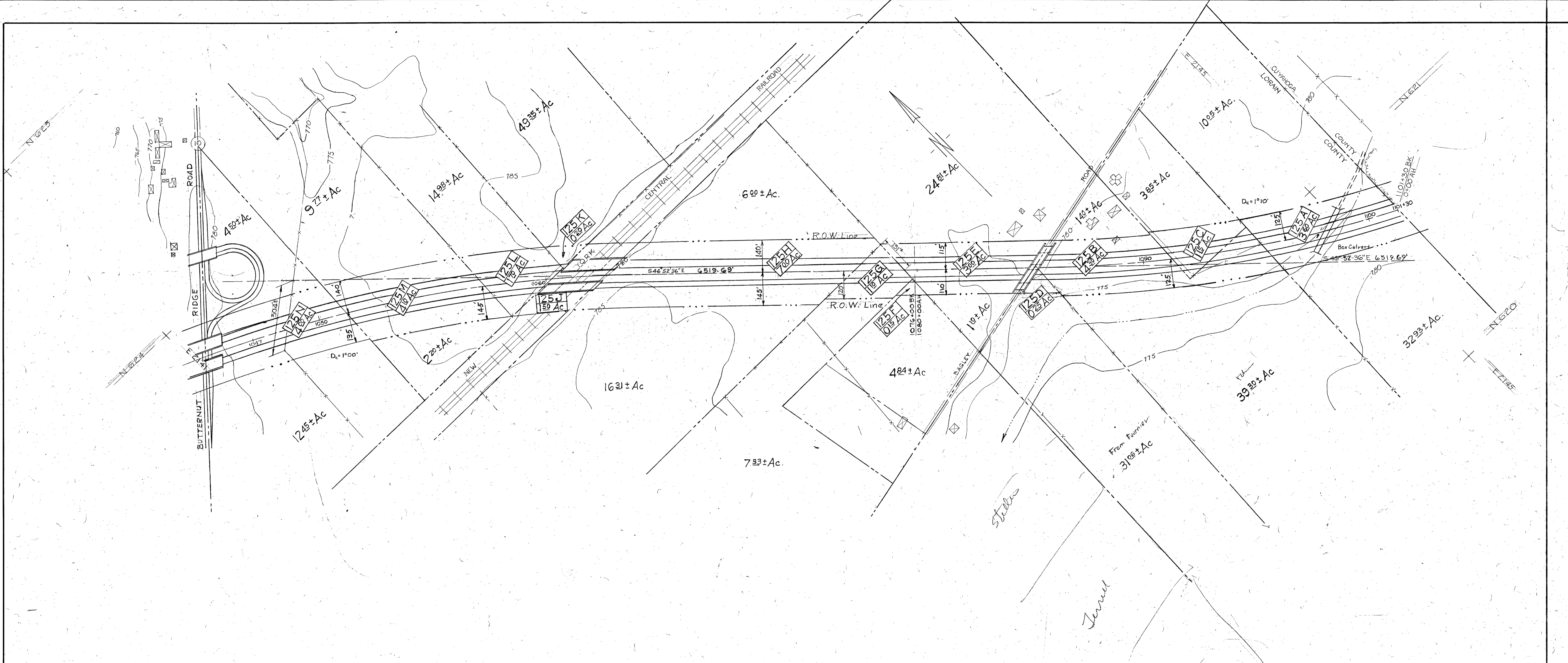
STATE OF OHIO
DEPARTMENT OF HIGHWAYS
OHIO TURNPIKE
PLAN AND PROFILE, STA. 858 TO STA. 924
LORAIN COUNTY

JUNE, 1951	J. E. GREINER CO. - CONSULTING ENGINEERS BALTIMORE, MARYLAND	DWG. NO. 122
------------	---	--------------



STATE OF OHIO
DEPARTMENT OF HIGHWAYS
OHIO TURNPIKE
PLAN AND PROFILE, STA. 924 TO STA. 990
LORAIN COUNTY

JUNE, 1951 J. E. GREINER CO. - CONSULTING ENGINEERS BALTIMORE, MARYLAND DWG. NO. 123



REVISIONS

DATE	PARCEL N°	DATE	PARCEL N°

SCALE
HOR. 1" = 200 FT. VERT. 1" = 20 FT.

STATE OF OHIO
DEPARTMENT OF HIGHWAYS
OHIO TURNPIKE
PLAN AND PROFILE, STA. 1047 TO STA. 1101+30
LORAIN COUNTY

JUNE, 1951 J. E. GREINER CO. - CONSULTING ENGINEERS BALTIMORE, MARYLAND DWG. NO. 125