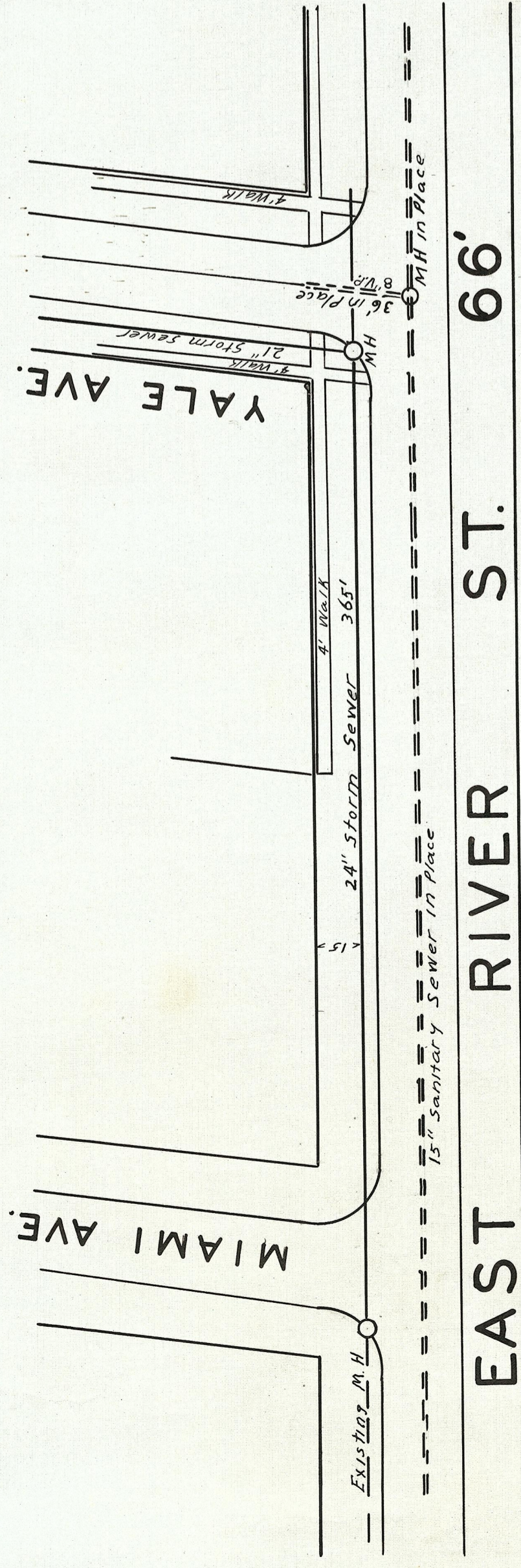
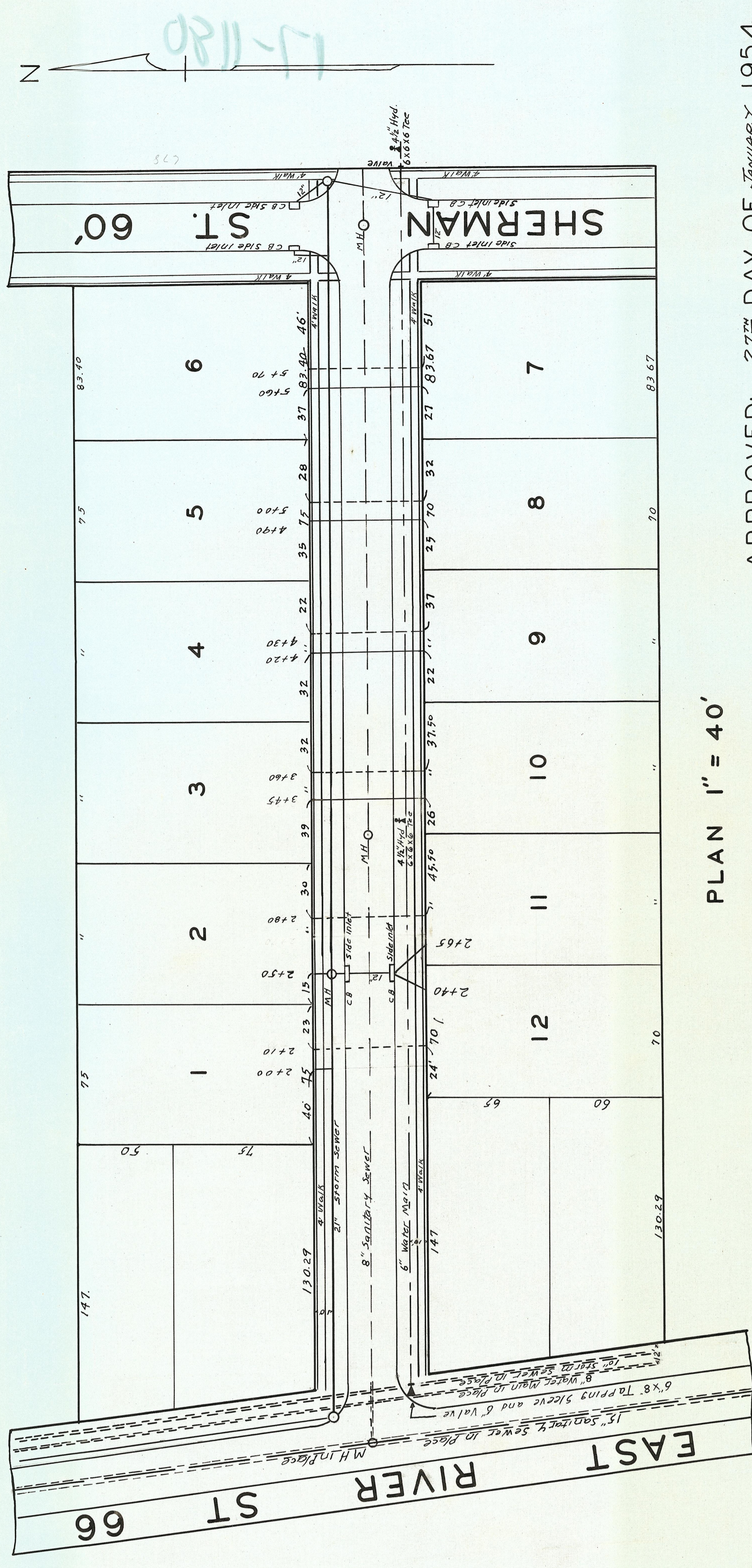
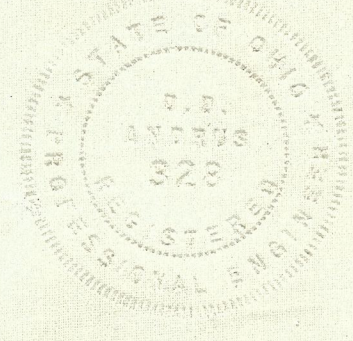


**SPECIFICATIONS**

WATER LINES, SANITARY SEWER, STORM SEWER, PAVEMENT, MANHOLES AND CATCHBASINS, ALL WORK AND MATERIALS TO CONFORM TO ELYRIA CITY STANDARDS.



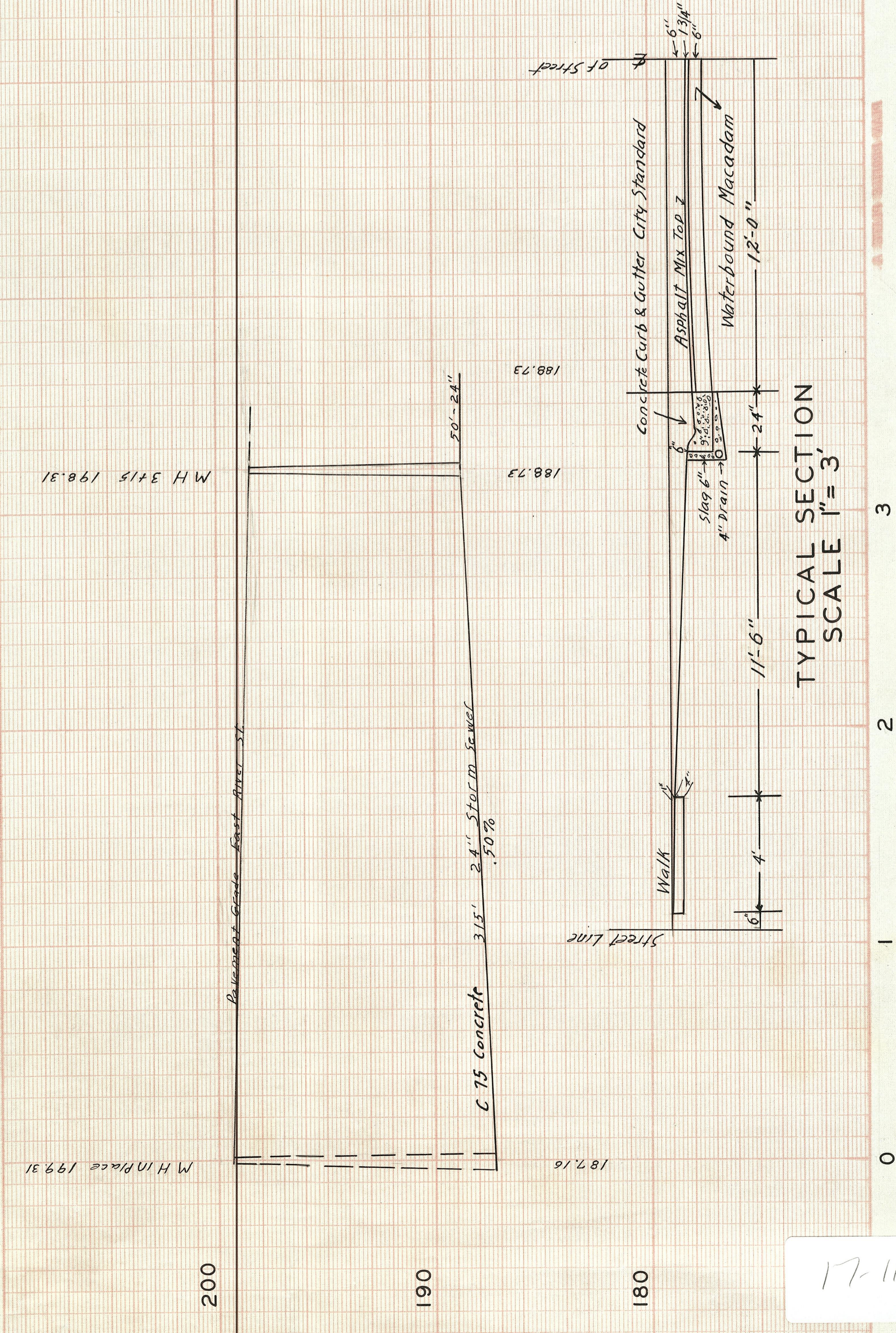
IMPROVEMENT PLAN  
**YALE AVE.**  
 ELYRIA CITY, LORAIN COUNTY, OHIO  
 JAN. 15, 1954  
 SCALES - AS SHOWN  
 J. W. WARDEN AND ASSOCIATES REG. ENGINEERS



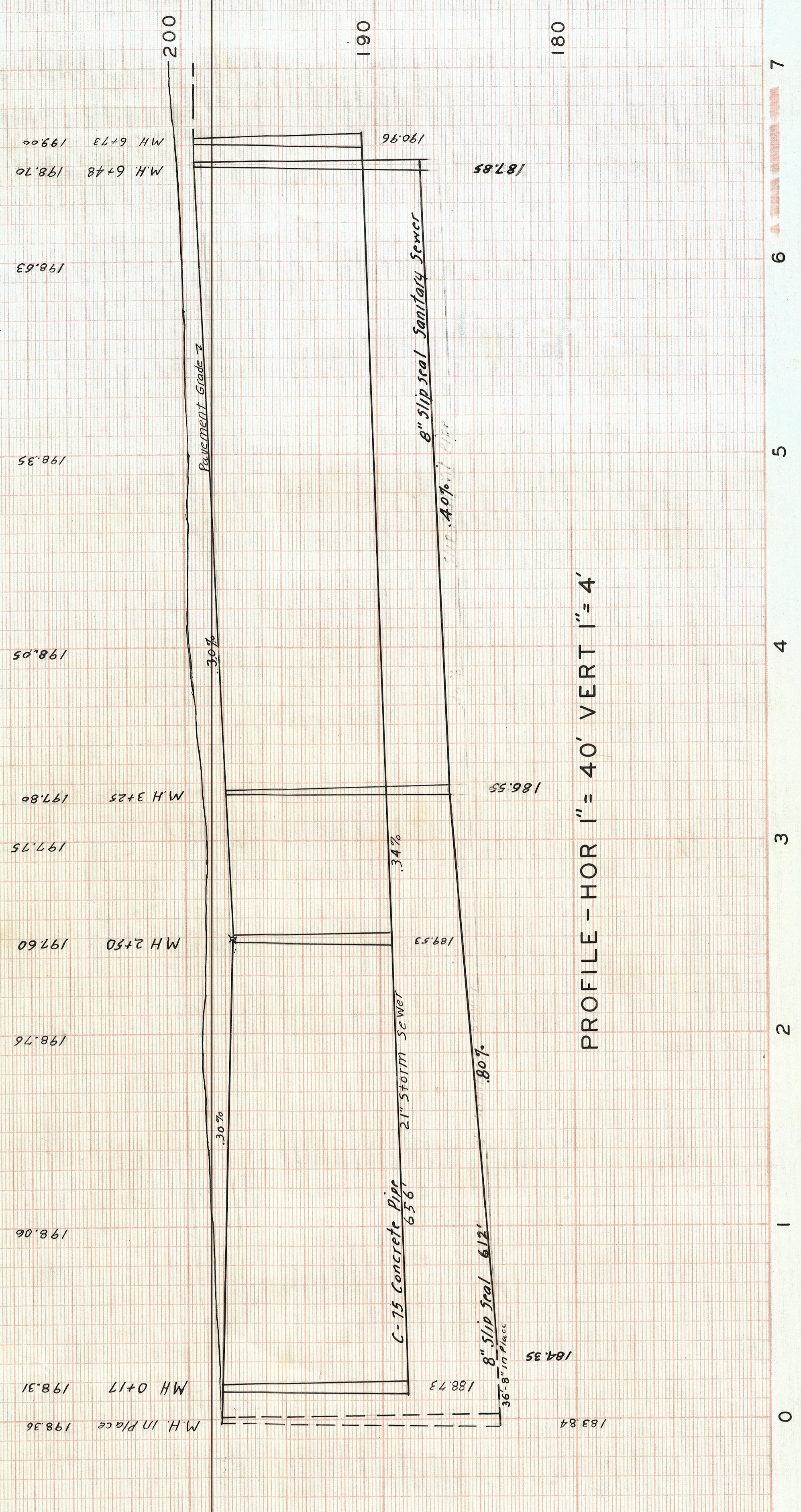
PLAN 1" = 40'

APPROVED: 27<sup>TH</sup> DAY OF JANUARY 1954

*J. W. Warden*  
 CITY ENGINEER

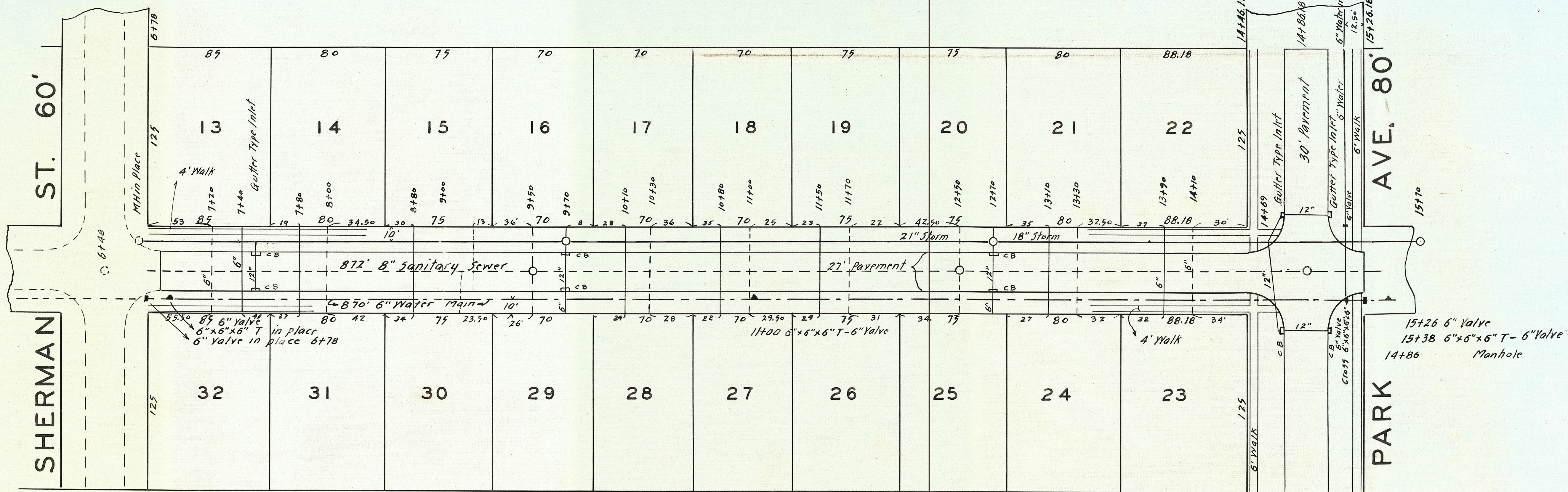


TYPICAL SECTION  
 SCALE 1" = 3'



PROFILE - HOR 1" = 40' VERT 1" = 4'

17-1180-1

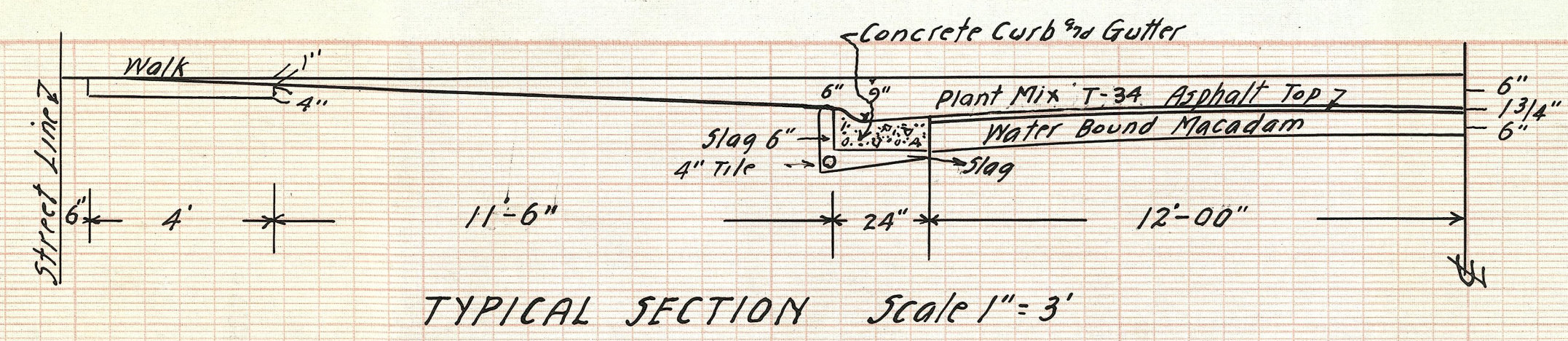


IMPROVEMENT PLAN  
**YALE AVE.**  
 ELYRIA CITY, LORAIN COUNTY, OHIO  
 SCALES - AS SHOWN JULY 24 1954  
 J.W. WARDEN AND ASSOCIATES REG. ENGINEER'S

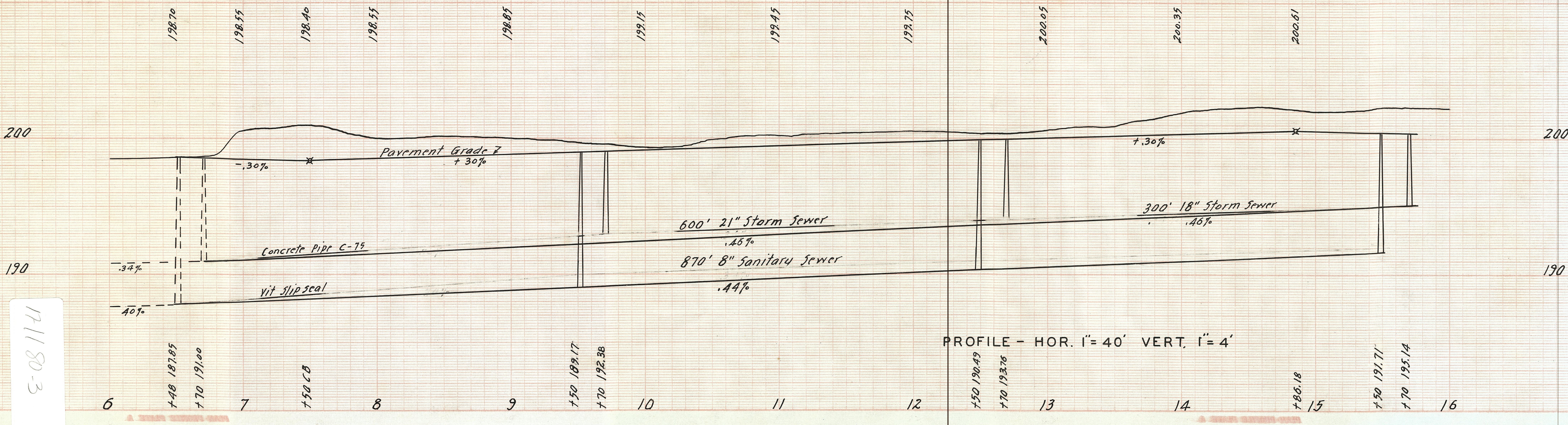
SPECIFICATIONS  
 WATER LINES, SANITARY SEWER, STORM SEWER, PAVEMENT,  
 SIDEWALKS, MANHOLES AND CATCHBASINS.  
 ALL WORK AND MATERIALS TO CONFORM TO ELYRIA CITY  
 STANDARDS.

PLAN 1" = 40'

APPROVED 24<sup>TH</sup> DAY OF JULY 1954  
*J. Powell*  
 CITY ENGINEER

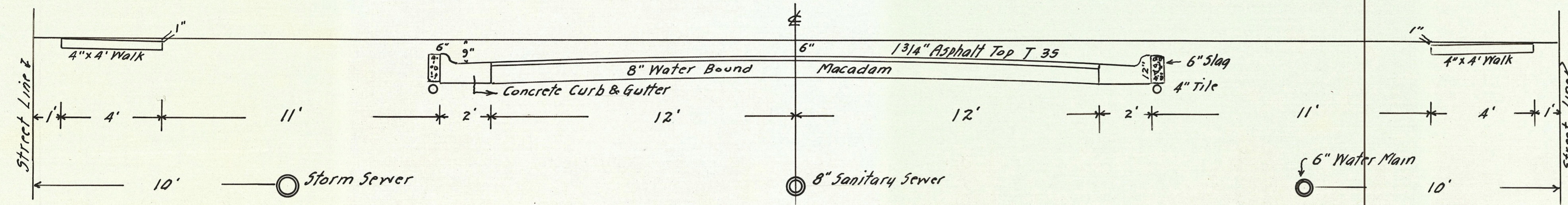
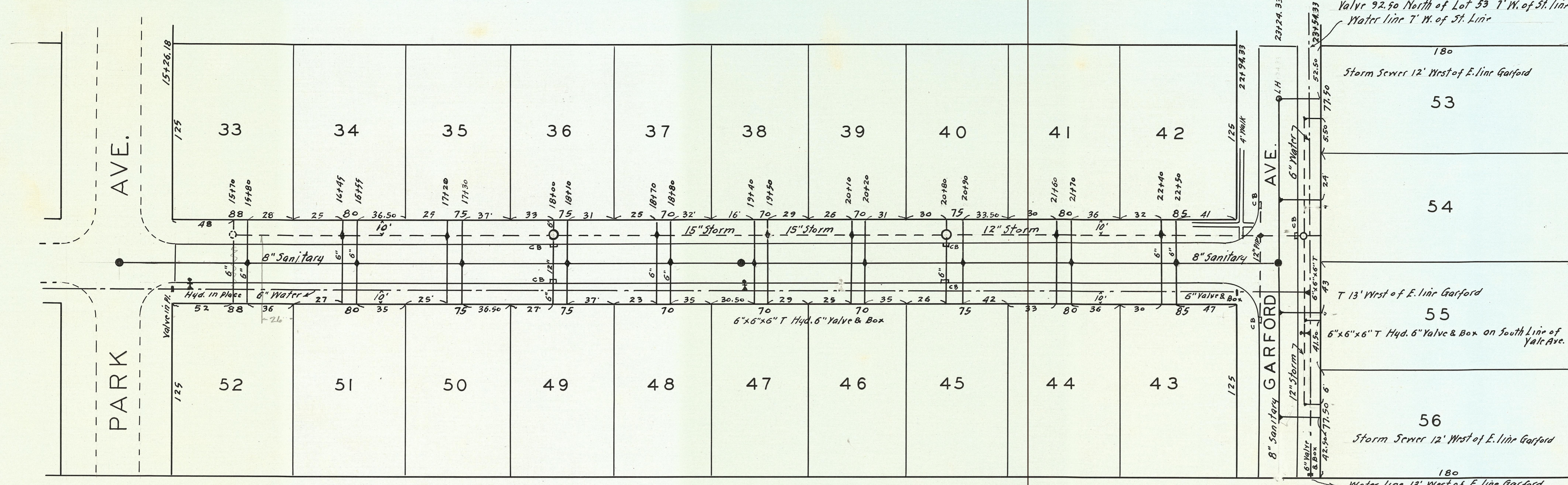


TYPICAL SECTION Scale 1" = 3'

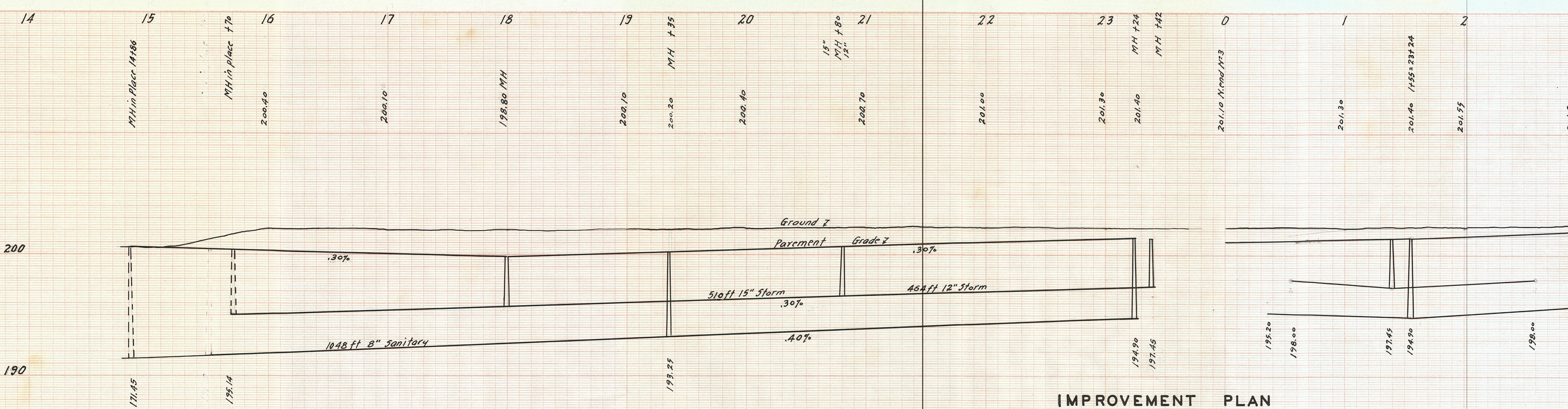


PROFILE - HOR. 1" = 40' VERT. 1" = 4'

171180-3



PLAN 1" = 40'



PROFILE-HOR 1"-40' VERT. 1"-4'

APPROVED THIS \_\_\_\_\_ DAY OF \_\_\_\_\_ 1955

CITY ENGINEER

**IMPROVEMENT PLAN**  
**YALE AVE.**  
 ELYRIA CITY, LORAIN COUNTY, OHIO  
 SCALES- AS SHOWN JULY 24, 1954  
 J. W. WARDEN AND ASSOCIATES REG. ENGINEER'S

SPECIFICATIONS  
 WATER LINES, SANITARY SEWER, STORM SEWER, PAVEMENT,  
 SIDE WALKS, MANHOLES AND CATCHBASINS. ALL WORK  
 AND MATERIALS TO CONFORM TO ELYRIA CITY STANDARDS.

17-118-2