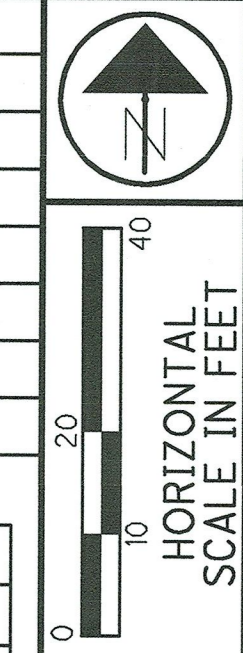


LORAIN COUNTY  
ORIGINAL BLACK RIVER TOWNSHIP  
TOWNSHIP 7, RANGE 18, TRACT 2, LOTS 23 & 24,  
CONNECTICUT WESTERN RESERVE  
CITY OF LORAIN

DATE COMPLETED:		
REV. BY	DATE	DESCRIPTION



- (A) 1" REBAR (FOUND)  
20+88.55 @ R/W W. 21ST ST. =  
55+11.64 @ R/W LEAVITT RD.
- (B) EASEMENT, STATE OF OHIO, PARCEL 33,  
D.B. 939, PG. 829, LOR-611-(0.05-1.97)
- (C) 20+58.80, 50.00' LT.  
@ R/W W. 21ST ST. =  
55+61.49, 30.00' LT.  
@ R/W LEAVITT RD.
- (D) 20+54.10, 50.00' LT.
- (E) 55+64.77, 31.00' LT.
- (F) 21+28.71, 33.00' LT.  
@ R/W W. 21ST ST. =  
55+44.84, 40.00' RT.  
@ R/W LEAVITT RD.
- (G) 55+82.55, 40.00' RT.
- (H) 55+82.55, 41.00' RT.
- (I) 55+57.77, 41.00' RT.
- (J) 21+39.78, 35.88' LT.
- (K) 21+55.49, 35.88' LT.
- (L) 21+55.49, 33.00' LT.
- (M) 54+64.05, 47.69' RT.
- (N) 55+92.57, 40.00' RT.
- (O) 55+92.57, 43.00' RT.
- (P) 55+62.62, 43.00' RT.
- (Q) 21+48.30, 50.00' RT.  
@ R/W W. 21ST ST. =  
54+61.44, 40.00' LT.  
@ R/W LEAVITT RD.
- (R) 20+44.25, 50.00' RT.
- (S) 21+44.58, 33.00' RT.
- (T) 21+54.20, 33.00' RT.
- (U) 54+65.21, 45.85' RT.
- (V) 54+64.93, 40.00' RT.
- (W) 21+57.75, 33.00' RT.
- (X) 21+18.71, 33.00' LT.  
@ R/W W. 21ST ST. =  
55+44.79, 30.00' RT.  
@ R/W LEAVITT RD.

(1)  
MERCY JLA LLC, AN OHIO LIMITED  
LIABILITY COMPANY  
02-02-023-113-005  
INST. 2021-0807261  
2160 W. 21ST ST.  
COMMERCIAL

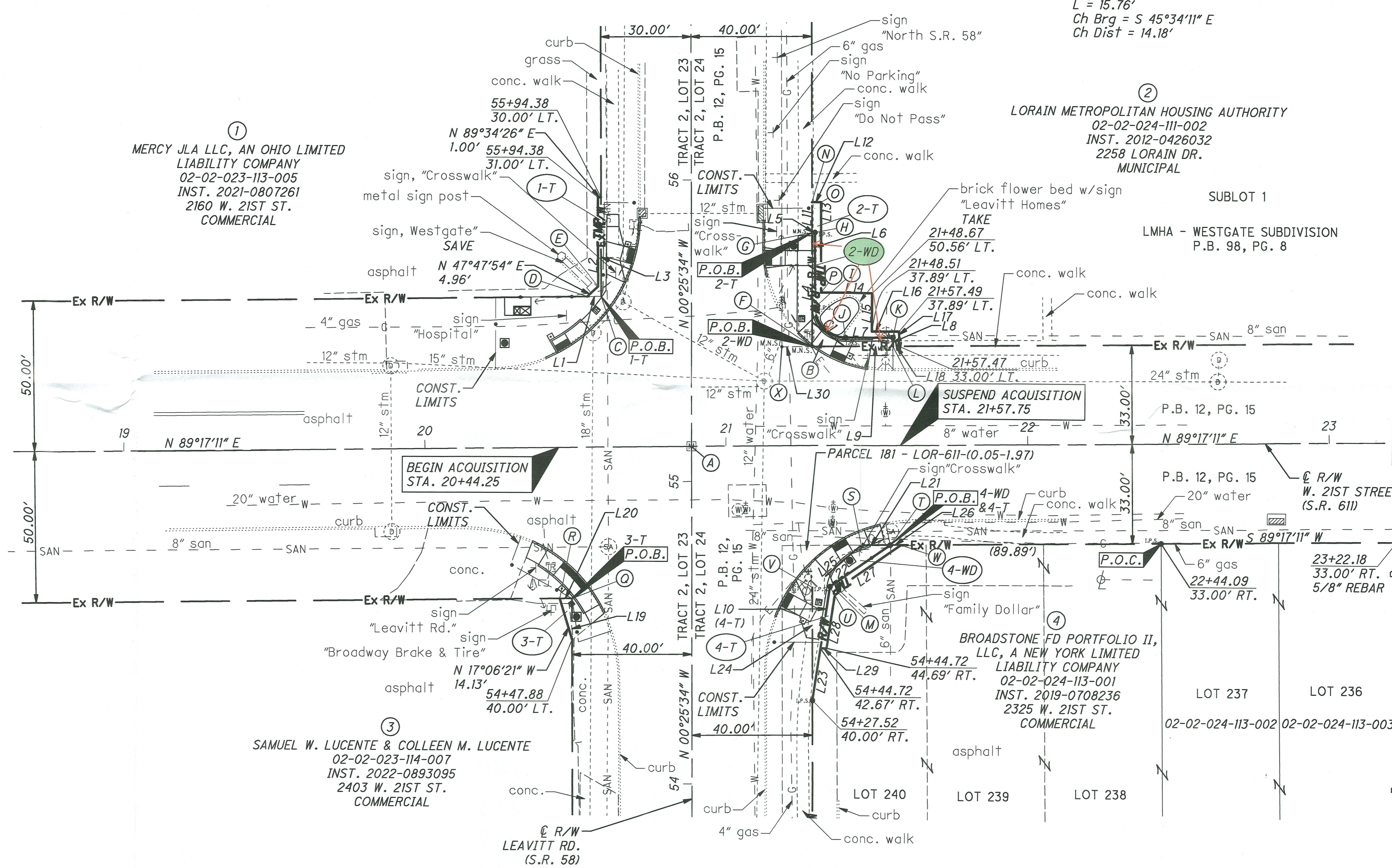
(2)  
LORAIN METROPOLITAN HOUSING AUTHORITY  
02-02-024-111-002  
INST. 2012-0426032  
2258 LORAIN DR.  
MUNICIPAL

SUBLOT 1  
LMHA - WESTGATE SUBDIVISION  
P.B. 98, PG. 8

(3)  
SAMUEL W. LUCENTE & COLLEEN M. LUCENTE  
02-02-023-114-007  
INST. 2022-0893095  
2403 W. 21ST ST.  
COMMERCIAL

BROADSTONE FD PORTFOLIO II,  
LLC, A NEW YORK LIMITED  
LIABILITY COMPANY  
02-02-024-113-001  
INST. 2019-0708236  
2325 W. 21ST ST.  
COMMERCIAL

LINE TABLE		
L1	S 89°17'11" W	4.70'
L2	N 00°25'34" W	29.61'
L3	S 00°25'34" E	32.89'
L4	N 00°25'34" W	37.71'
L5	N 89°34'26" E	1.00'
L6	S 00°25'34" E	24.78'
L7	N 89°17'11" E	15.71'
L8	S 00°42'49" E	2.88'
L9	S 89°17'11" W	26.77'
L10	N 08°23'32" E	20.71'
L11	N 00°25'34" W	10.02'
L12	N 89°44'45" E	3.00'
L13	S 00°29'01" E	29.95'
L14	N 90°00'00" E	16.85'
L15	S 00°00'00" E	12.67'
L16	N 89°17'11" E	8.98'
L17	S 00°29'42" E	4.89'
L18	S 89°17'11" W	1.99'
L19	S 00°25'34" E	13.55'
L20	N 89°17'11" E	4.06'
L21	N 89°17'11" E	9.62'
L22	S 54°59'25" W	24.25'
L23	S 08°23'32" W	38.13'
L24	N 00°25'34" W	37.41'
L25	N 48°44'25" E	21.40'
L26	N 89°17'11" E	3.55'
L27	S 54°59'25" W	26.32'
L28	S 08°23'32" W	19.56'
L29	S 89°55'44" W	2.02'
L30	N 89°17'11" E	10.00'



C1 = 90°17'15"  
Δ = 10.00'  
R = 10.00'  
L = 15.76'  
Ch Brg = S 45°34'11" E  
Ch Dist = 14.18'

P. I. D.  
114823

R/W DESIGNER  
NLC  
R/W REVIEWER  
TDM

RIGHT OF WAY DETAIL SHEET  
W. 21ST ST. (S.R. 611) AT LEAVITT RD. (S.R. 58)

LOR-611-1.10

6/8

APPROVED  
LORAIN CO.  
MAP DEPT.  
DATE 4/5/23  
PAGE 2-02-024  
BY T. Spurr  
PROJECT # 23-100790 # 00791  
SEAL # S0889