

# BOUNDARY SURVEY

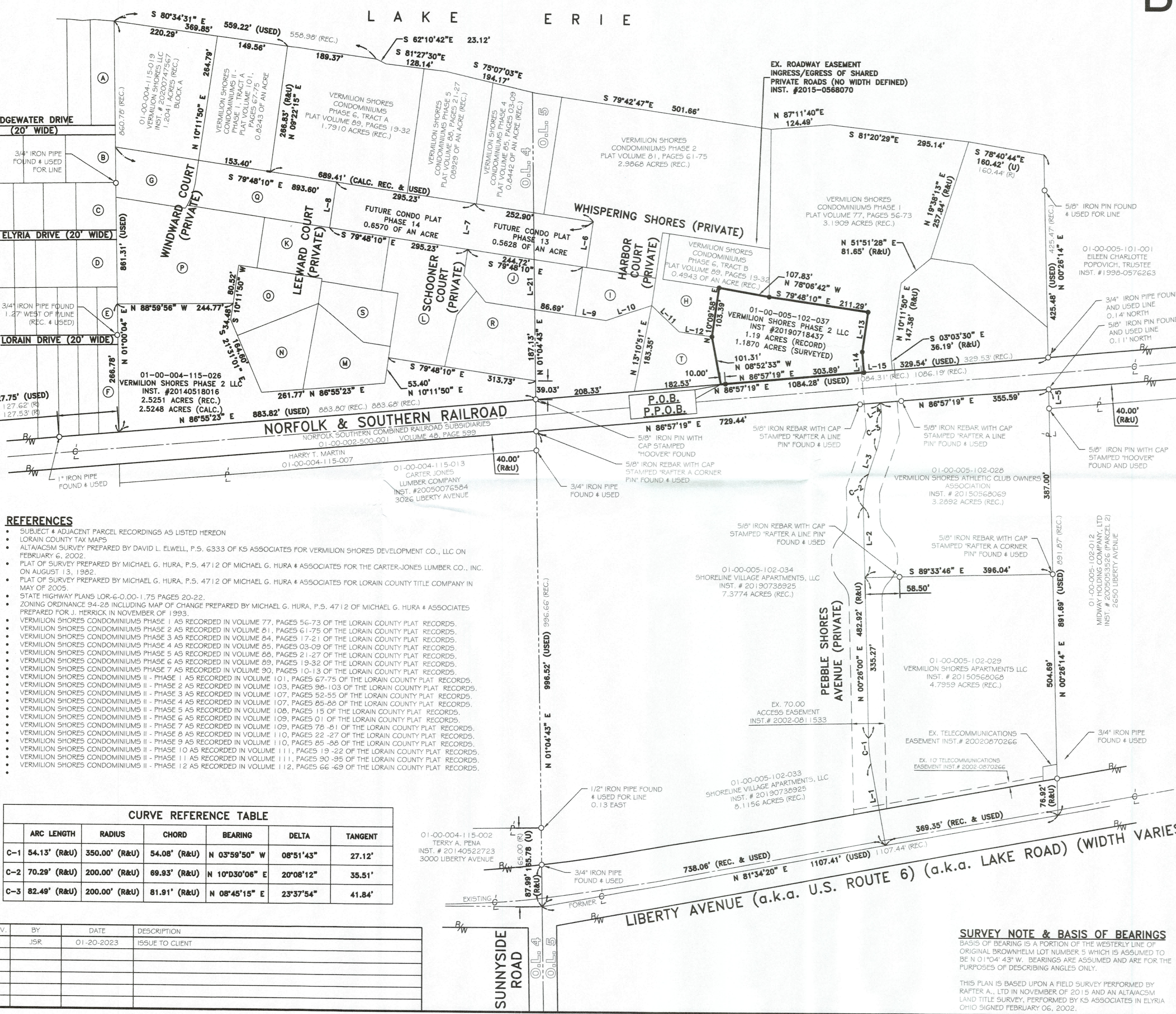
FOR  
**VERMILION SHORES PHASE 2, LLC**  
 SITUATED IN THE CITY OF VERMILION, COUNTY OF LORAIN,  
 STATE OF OHIO, AND KNOWN AS BEING PART OF ORIGINAL  
 BROWNHELM TOWNSHIP LOT NUMBERS 05.

APPROVED  
 LORAIN CO.  
 PLANNING DEPT.  
 DATE 3/9/23  
 TIME 1:00-0:05  
 BY T. Sullivan  
 23-05045-C  
 SCANS 6837

VICINITY MAP  
 -NOT TO SCALE-

A	01-00-004-102-016 MICHAEL R. GETTENS INST. # 20040988038	G	VERMILION SHORES CONDOMINIUMS II - PHASE 7 PLAT VOLUME 109, PAGES 78 - 81	M	VERMILION SHORES CONDOMINIUMS II - PHASE 3 PLAT VOLUME 107 PAGES 52-55
B	01-00-004-104-038 CARL JASKIEWICZ INST. # 20130468327	H	VERMILION SHORES CONDOMINIUMS II - PHASE 3 PLAT VOLUME 84, PAGES 17-21	N	VERMILION SHORES CONDOMINIUMS II - PHASE 4 PLAT VOLUME 107 PAGES 85-86
C	01-00-004-104-035 LARRY JAMES WHITE JR. O.R. VOLUME 1385, PAGE 422	I	VERMILION SHORES CONDOMINIUMS II - PHASE 7 PLAT VOLUME 90, PAGES 10	O	VERMILION SHORES CONDOMINIUMS II - PHASE 5 PLAT VOLUME 108 PAGES 15
D	01-00-004-106-014 MICHAEL R. & KATHY BERCHIN O.R. VOLUME 525, PAGE 788	J	VERMILION SHORES CONDOMINIUMS II - PHASE 1 TRACT B PLAT VOLUME 101, PAGES 67-75	P	VERMILION SHORES CONDOMINIUMS II - PHASE 8 PLAT VOLUME 110, PAGES 22 - 27
E	01-00-004-106-027 SCHWINGER PROPERTIES, LLC INST. # 2013047562	K	VERMILION SHORES CONDOMINIUMS II - PHASE 6 PLAT VOLUME 103, PAGES 1 - 6	Q	VERMILION SHORES CONDOMINIUMS II - PHASE 11 PLAT VOLUME 111, PAGES 90 - 95
F	01-00-004-108-023 DEAN F. MACLEAN JR. INST. # 20210818910	L	VERMILION SHORES CONDOMINIUMS II - PHASE 2 PLAT VOLUME 103, PAGES 98-103	R	VERMILION SHORES CONDOMINIUMS II - PHASE 10 PLAT VOLUME 111, PAGES 19 - 22
				S	VERMILION SHORES CONDOMINIUMS II - PHASE 9 PLAT VOLUME 110, PAGES 85 - 88
				T	VERMILION SHORES CONDOMINIUMS II - PHASE 12 PLAT VOLUME 112, PAGES 66 - 69

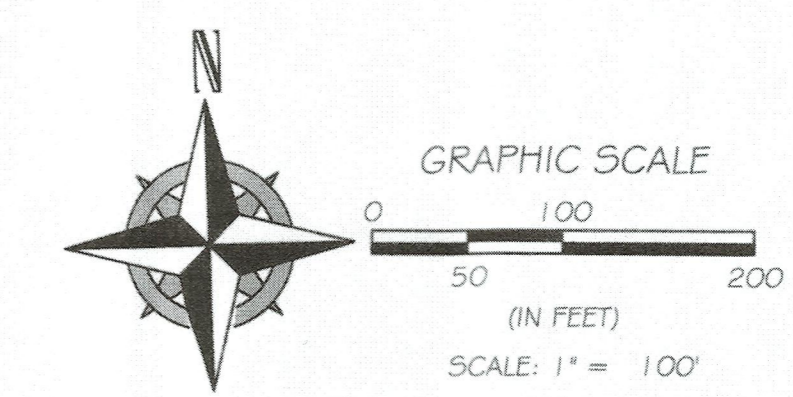
L-1	174.51' (R&U)	N 08°25'40" W	L-8	96.94' (R&U)	N 10°11'50" E
L-2	147.65'	N 00°26'00" E	L-9	65.60' (R&U)	N 79°45'03" W
L-3	52.78' (R&U)	N 20°34'12" E	L-10	100.77' (R&U)	N 73°05'26" E
L-4	18.34'	N 03°03'42" W	L-11	79.41' (R&U)	S 44°46'26" E
L-5	40.07' (R&U)	N 00°26'14" E	L-12	70.00' (R&U)	S 79°50'03" E
L-6	96.94' (R&U)	N 10°11'50" E	L-13	84.35' (R&U)	N 10°11'50" E
L-7	96.94' (CALC)	N 10°11'50" E	L-14	43.15' (R&U)	S 03°03'30" E
			L-15	60.00' (R&U)	N 86°57'19" E



- REFERENCES**
- SUBJECT & ADJACENT PARCEL RECORDINGS AS LISTED HEREON
  - LORAIN COUNTY TAX MAPS
  - ALTA/ACSM SURVEY PREPARED BY DAVID L. ELWELL, P.S. 6333 OF KS ASSOCIATES FOR VERMILION SHORES DEVELOPMENT CO., LLC ON FEBRUARY 6, 2002.
  - PLAT OF SURVEY PREPARED BY MICHAEL G. HURA, P.S. 4712 OF MICHAEL G. HURA & ASSOCIATES FOR THE CARTER-JONES LUMBER CO., INC. ON AUGUST 13, 1982.
  - PLAT OF SURVEY PREPARED BY MICHAEL G. HURA, P.S. 4712 OF MICHAEL G. HURA & ASSOCIATES FOR LORAIN COUNTY TITLE COMPANY IN MAY OF 2005.
  - STATE HIGHWAY PLANS LOR-6-0-00-1, 75 PAGES 20-22.
  - ZONING ORDINANCE 94-28 INCLUDING MAP OF CHANGE PREPARED BY MICHAEL G. HURA, P.S. 4712 OF MICHAEL G. HURA & ASSOCIATES PREPARED FOR J. HERRICK IN NOVEMBER OF 1993.
  - VERMILION SHORES CONDOMINIUMS PHASE 1 AS RECORDED IN VOLUME 77, PAGES 56-73 OF THE LORAIN COUNTY PLAT RECORDS.
  - VERMILION SHORES CONDOMINIUMS PHASE 2 AS RECORDED IN VOLUME 81, PAGES 61-75 OF THE LORAIN COUNTY PLAT RECORDS.
  - VERMILION SHORES CONDOMINIUMS PHASE 3 AS RECORDED IN VOLUME 84, PAGES 17-21 OF THE LORAIN COUNTY PLAT RECORDS.
  - VERMILION SHORES CONDOMINIUMS PHASE 4 AS RECORDED IN VOLUME 85, PAGES 03-09 OF THE LORAIN COUNTY PLAT RECORDS.
  - VERMILION SHORES CONDOMINIUMS PHASE 5 AS RECORDED IN VOLUME 88, PAGES 21-27 OF THE LORAIN COUNTY PLAT RECORDS.
  - VERMILION SHORES CONDOMINIUMS PHASE 6 AS RECORDED IN VOLUME 89, PAGES 19-32 OF THE LORAIN COUNTY PLAT RECORDS.
  - VERMILION SHORES CONDOMINIUMS PHASE 7 AS RECORDED IN VOLUME 90, PAGES 10-13 OF THE LORAIN COUNTY PLAT RECORDS.
  - VERMILION SHORES CONDOMINIUMS II - PHASE 1 AS RECORDED IN VOLUME 101, PAGES 67-75 OF THE LORAIN COUNTY PLAT RECORDS.
  - VERMILION SHORES CONDOMINIUMS II - PHASE 2 AS RECORDED IN VOLUME 103, PAGES 98-103 OF THE LORAIN COUNTY PLAT RECORDS.
  - VERMILION SHORES CONDOMINIUMS II - PHASE 3 AS RECORDED IN VOLUME 107, PAGES 52-55 OF THE LORAIN COUNTY PLAT RECORDS.
  - VERMILION SHORES CONDOMINIUMS II - PHASE 4 AS RECORDED IN VOLUME 107, PAGES 85-88 OF THE LORAIN COUNTY PLAT RECORDS.
  - VERMILION SHORES CONDOMINIUMS II - PHASE 5 AS RECORDED IN VOLUME 108, PAGES 15 OF THE LORAIN COUNTY PLAT RECORDS.
  - VERMILION SHORES CONDOMINIUMS II - PHASE 6 AS RECORDED IN VOLUME 109, PAGES 01 OF THE LORAIN COUNTY PLAT RECORDS.
  - VERMILION SHORES CONDOMINIUMS II - PHASE 7 AS RECORDED IN VOLUME 109, PAGES 78-81 OF THE LORAIN COUNTY PLAT RECORDS.
  - VERMILION SHORES CONDOMINIUMS II - PHASE 8 AS RECORDED IN VOLUME 110, PAGES 22-27 OF THE LORAIN COUNTY PLAT RECORDS.
  - VERMILION SHORES CONDOMINIUMS II - PHASE 9 AS RECORDED IN VOLUME 110, PAGES 85-88 OF THE LORAIN COUNTY PLAT RECORDS.
  - VERMILION SHORES CONDOMINIUMS II - PHASE 10 AS RECORDED IN VOLUME 111, PAGES 19-22 OF THE LORAIN COUNTY PLAT RECORDS.
  - VERMILION SHORES CONDOMINIUMS II - PHASE 11 AS RECORDED IN VOLUME 111, PAGES 90-95 OF THE LORAIN COUNTY PLAT RECORDS.
  - VERMILION SHORES CONDOMINIUMS II - PHASE 12 AS RECORDED IN VOLUME 112, PAGES 66-69 OF THE LORAIN COUNTY PLAT RECORDS.

ARC LENGTH	RADIUS	CHORD	BEARING	DELTA	TANGENT	
C-1	54.13' (R&U)	350.00' (R&U)	54.08' (R&U)	N 03°59'50" W	08°51'43"	27.12'
C-2	70.29' (R&U)	200.00' (R&U)	69.93' (R&U)	N 10°D30'06" E	20°08'12"	35.51'
C-3	82.49' (R&U)	200.00' (R&U)	81.91' (R&U)	N 08°45'15" E	23°37'54"	41.84'

REV.	BY	DATE	DESCRIPTION
1	JSR	01-20-2023	ISSUE TO CLIENT



**LEGEND**  
 ○ IRON PIPE FOUND  
 ● 5/8" IRON PIN SET (GREEN CAP = LINE PIN)  
 ● 5/8" IRON PIN SET (YELLOW CAP = CORNER PIN)

**SURVEY NOTE & BASIS OF BEARINGS**  
 BASIS OF BEARING IS A PORTION OF THE WESTERLY LINE OF ORIGINAL BROWNHELM LOT NUMBER 5 WHICH IS ASSUMED TO BE N 01°04'43" W. BEARINGS ARE ASSUMED AND ARE FOR THE PURPOSES OF DESCRIBING ANGLES ONLY.  
 THIS PLAN IS BASED UPON A FIELD SURVEY PERFORMED BY RAFTER A., LTD IN NOVEMBER OF 2015 AND AN ALTA/ACSM LAND TITLE SURVEY, PERFORMED BY KS ASSOCIATES IN ELYRIA OHIO SIGNED FEBRUARY 06, 2002.

**BOUNDARY SURVEY**  
 SITUATED IN THE CITY OF VERMILION, COUNTY OF LORAIN, STATE OF OHIO, AND KNOWN AS BEING PART OF ORIGINAL BROWNHELM TOWNSHIP LOT NUMBERS 05.  
 VERMILION SHORES PHASE 2, LLC  
 4835 MUNSON STREET NW  
 CANTON, OHIO 44718

**RAFTER A., LTD**  
 LAND SURVEYING & ENGINEERING  
 Office: 440-458-6294  
 Fax: 440-458-4483  
 www.RafterA.com  
 10880 LaGrange Road  
 Elyria, Ohio 44035  
 DRAWN BY: JSR  
 CHECKED BY: BDA  
 JOB No: 1236AD-22  
 SHEET 1 of 1