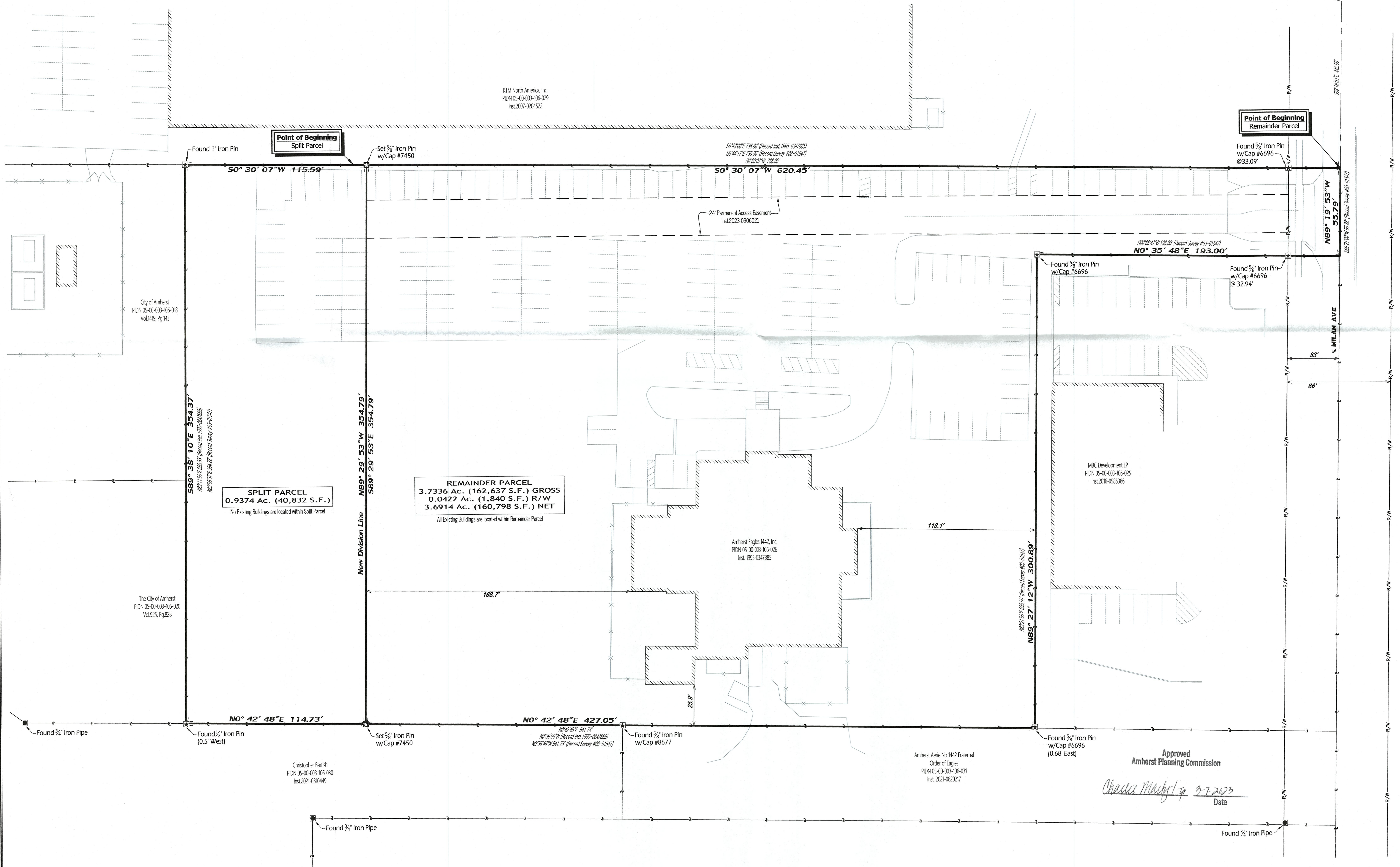


SURVEYOR'S NOTES

1. Field Survey completed on 01/31/2023
2. Lines of occupation are as shown
3. Additional pertinent records include:
Lorain County Map Dept Surveys: 7551, 17361, 20827, 21275A, 21728, 07-02373, 18-03905



Point of Commencement
Intersection of the centerline of Milan Ave. and the West line of the Miller & Streater's Addition (P.V.2, Pg.10)

Point of Beginning
Remainder Parcel

Point of Beginning
Split Parcel

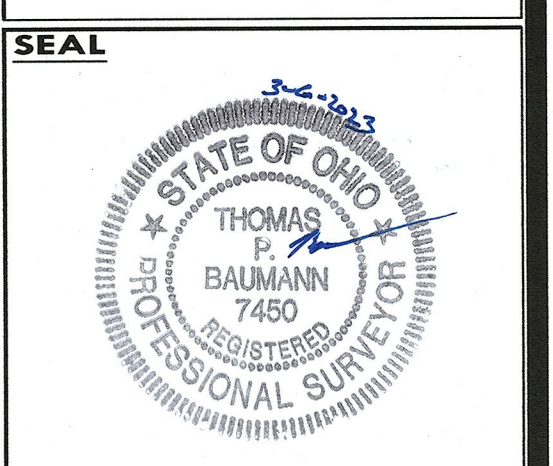
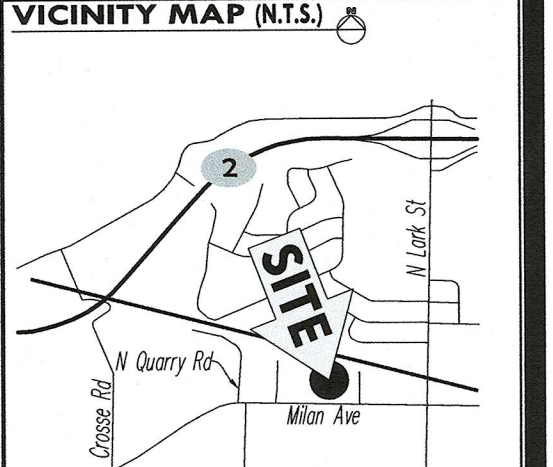
SPLIT PARCEL
0.9374 Ac. (40,832 S.F.)
No Existing Buildings are located within Split Parcel

REMAINDER PARCEL
3.7336 Ac. (162,637 S.F.) GROSS
0.0422 Ac. (1,840 S.F.) R/W
3.6914 Ac. (160,798 S.F.) NET
All Existing Buildings are located within Remainder Parcel



BAUMANN LAND SURVEY, INC.
P.O. BOX 14834, CINCINNATI, OHIO 45250
513.860.3999 WWW.BAUMANNLSI.COM

WARNING
The location of all utilities and underground structures shown are approximate and are not necessarily all of the existing utilities and structures. It is the contractor's responsibility to determine the exact location and existence of all utilities and underground structures.



OHIO CERTIFICATION
I hereby state that this plat shown hereon is the correct representation of a field survey supervised by me and meets the current Ohio minimum standards for property surveys.

Thomas P. Baumann, PS
Ohio Surveyor # S-1450

50832
APPROVED
LORAIN CO.
MAP DEPT
DATE 3/7/2023
PAGE 05-00-003
BY A. Canden
#23-04650

PLAT OF SURVEY
LOT SPLIT
OF THE LANDS OF
AMHERST EAGLES 1442, INC.
(PIDN 05-00-003-106-026)
INST. 1995-0347885

ORIGINAL LOT No. 3
TOWN 6 NORTH, RANGE 18 WEST
CONNECTICUT WESTERN RESERVE
AMHERST TOWNSHIP, CITY OF AMHERST,
LORAIN COUNTY, OHIO

PREPARED FOR
ENERGAL ENERGY & EXPLORATION LAND COMPANY
DRAWING: 14595
PROJECT: 22634
DATE: 03.06.2023
REVISION:

SCALE
1" = 30'
NORTH SHEET 1

Approved
Amherst Planning Commission
Chasica Mandy Top 3-7-2023
Date

The Baumann Land Survey, Inc. is a professional corporation organized under the laws of the State of Ohio. It is not a public utility. The location of all utilities and underground structures shown are approximate and are not necessarily all of the existing utilities and structures. It is the contractor's responsibility to determine the exact location and existence of all utilities and underground structures. The location of all structures shown are approximate and are not necessarily all of the existing structures. It is the contractor's responsibility to determine the exact location and existence of all structures. The location of all boundaries shown are approximate and are not necessarily all of the existing boundaries. It is the contractor's responsibility to determine the exact location and existence of all boundaries. The location of all easements shown are approximate and are not necessarily all of the existing easements. It is the contractor's responsibility to determine the exact location and existence of all easements. The location of all encroachments shown are approximate and are not necessarily all of the existing encroachments. It is the contractor's responsibility to determine the exact location and existence of all encroachments. The location of all monuments shown are approximate and are not necessarily all of the existing monuments. It is the contractor's responsibility to determine the exact location and existence of all monuments. The location of all bearings and distances shown are approximate and are not necessarily all of the existing bearings and distances. It is the contractor's responsibility to determine the exact location and existence of all bearings and distances. The location of all areas shown are approximate and are not necessarily all of the existing areas. It is the contractor's responsibility to determine the exact location and existence of all areas. The location of all volumes shown are approximate and are not necessarily all of the existing volumes. It is the contractor's responsibility to determine the exact location and existence of all volumes. The location of all areas and volumes shown are approximate and are not necessarily all of the existing areas and volumes. It is the contractor's responsibility to determine the exact location and existence of all areas and volumes. The location of all areas, volumes, and boundaries shown are approximate and are not necessarily all of the existing areas, volumes, and boundaries. It is the contractor's responsibility to determine the exact location and existence of all areas, volumes, and boundaries. The location of all areas, volumes, boundaries, and easements shown are approximate and are not necessarily all of the existing areas, volumes, boundaries, and easements. It is the contractor's responsibility to determine the exact location and existence of all areas, volumes, boundaries, and easements. The location of all areas, volumes, boundaries, easements, and encroachments shown are approximate and are not necessarily all of the existing areas, volumes, boundaries, easements, and encroachments. It is the contractor's responsibility to determine the exact location and existence of all areas, volumes, boundaries, easements, and encroachments. The location of all areas, volumes, boundaries, easements, encroachments, and monuments shown are approximate and are not necessarily all of the existing areas, volumes, boundaries, easements, encroachments, and monuments. It is the contractor's responsibility to determine the exact location and existence of all areas, volumes, boundaries, easements, encroachments, and monuments. The location of all areas, volumes, boundaries, easements, encroachments, monuments, and bearings and distances shown are approximate and are not necessarily all of the existing areas, volumes, boundaries, easements, encroachments, monuments, and bearings and distances. It is the contractor's responsibility to determine the exact location and existence of all areas, volumes, boundaries, easements, encroachments, monuments, and bearings and distances. The location of all areas, volumes, boundaries, easements, encroachments, monuments, bearings and distances, and areas and volumes shown are approximate and are not necessarily all of the existing areas, volumes, boundaries, easements, encroachments, monuments, bearings and distances, and areas and volumes. It is the contractor's responsibility to determine the exact location and existence of all areas, volumes, boundaries, easements, encroachments, monuments, bearings and distances, and areas and volumes. The location of all areas, volumes, boundaries, easements, encroachments, monuments, bearings and distances, areas and volumes, and areas, volumes, boundaries, easements, encroachments, monuments, bearings and distances, and areas and volumes shown are approximate and are not necessarily all of the existing areas, volumes, boundaries, easements, encroachments, monuments, bearings and distances, areas and volumes, and areas, volumes, boundaries, easements, encroachments, monuments, bearings and distances, and areas and volumes. It is the contractor's responsibility to determine the exact location and existence of all areas, volumes, boundaries, easements, encroachments, monuments, bearings and distances, areas and volumes, and areas, volumes, boundaries, easements, encroachments, monuments, bearings and distances, and areas and volumes.