

APPROVED
LORAIN CO.
MAP DEPT

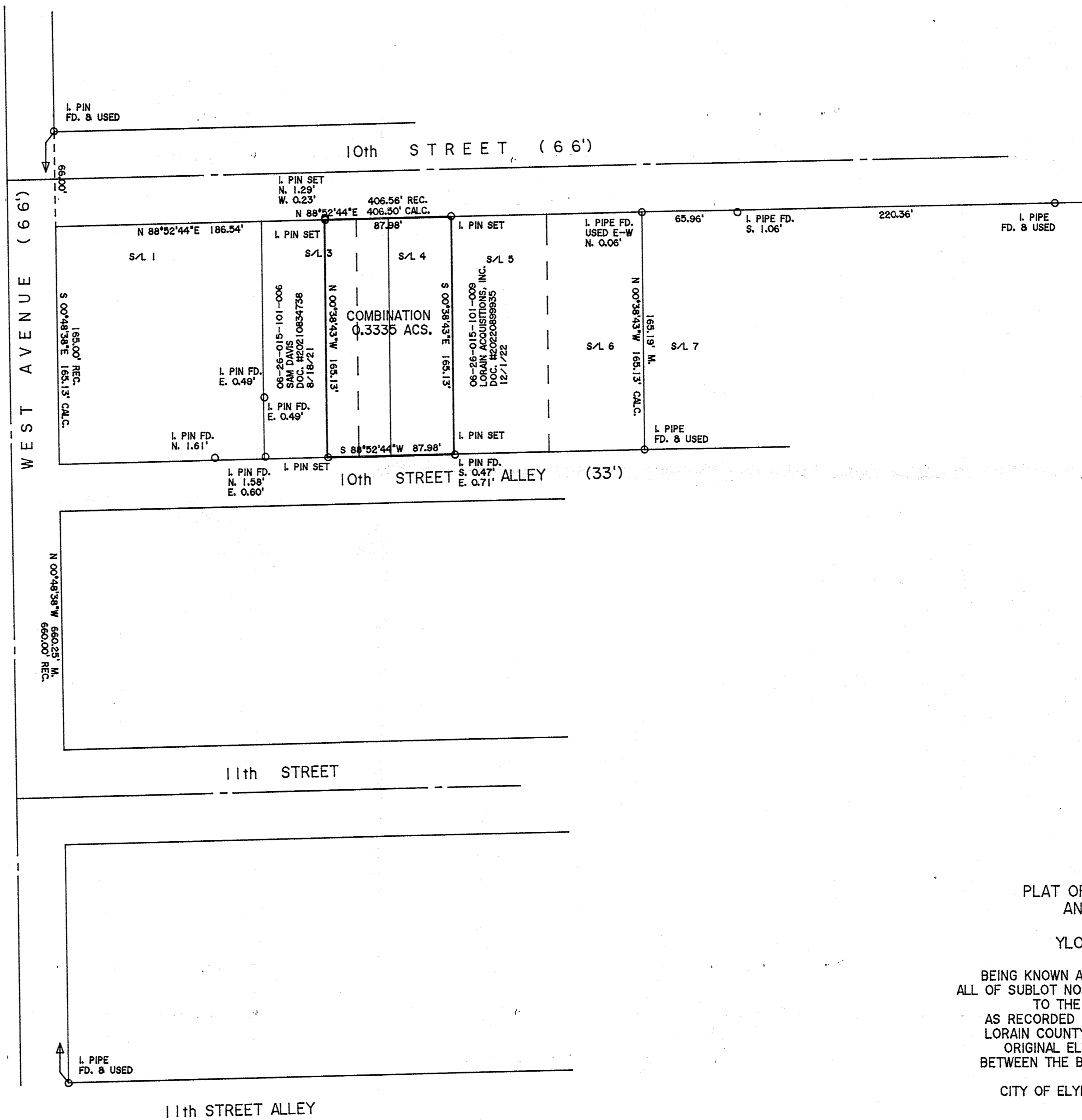
DATE 3/1/23

PAGE 06-26-015

BY WRZ

23-04645

50824



DIMENSIONS SHOWN ON THIS PLAT ARE EXPRESSED IN FEET AND DECIMAL PARTS THEREOF, ALL BEARINGS ARE TO AN ASSUMED MERIDIAN AND ARE USED TO INDICATE ANGLES ONLY. PERMANENT MONUMENTS WERE FOUND OR SET AT ALL POINTS INDICATED HEREON, WHICH I CERTIFY TO BE CORRECT.



Thomas A. Simon

THOMAS A. SIMON
REG. PROFESSIONAL SURVEYOR
NO. S-7775

BASIS OF BEARINGS IS THE SOUTHERLY LINE OF 10th STREET (NORTH 88°52'44" EAST). IRON PINS SET ARE 5/8" DIAMETER, 30" LONG WITH PLASTIC CAPS "T. SIMON, S-7775".

THOMAS SIMON & ASSOCIATES, INC.
PROFESSIONAL LAND SURVEYORS

190 SOUTH OLIVE STREET
ELYRIA, OHIO 44035

(440) 327-2925
FAX 327-2964

PLAT OF BOUNDARY SURVEY
AND COMBINATION
FOR
YLONDA OCHELTREE

BEING KNOWN AS PART OF SUBLT NO. 3 AND ALL OF SUBLT NO. 4 IN ELY AND MUSSEYS ADDITION TO THE TOWN PLAT OF ELYRIA AS RECORDED IN PLAT VOLUME 2 PAGE 9 OF LORAIN COUNTY MAP RECORDS AND PART OF ORIGINAL ELYRIA TOWNSHIP LOT NO. 15 BETWEEN THE BRANCHES OF THE BLACK RIVER

CITY OF ELYRIA COUNTY OF LORAIN
STATE OF OHIO

JANUARY, 2023 SCALE: 1" = 60'