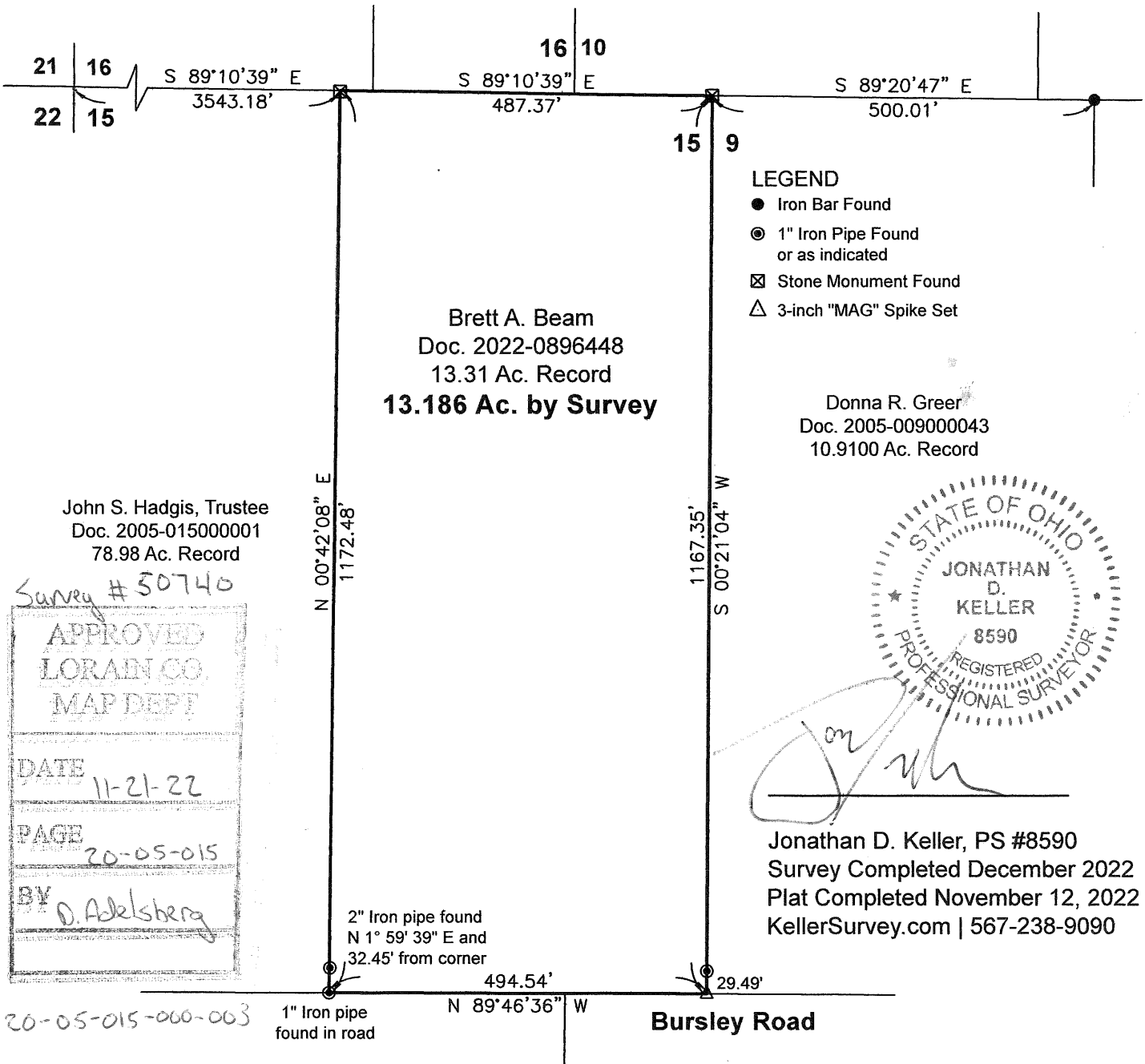


RE-SURVEY for Brett A. Beam
 ORIGINAL LOT 15, Tract 5, T-2-N, R-19-W
 ROCHESTER TOWNSHIP, LORAIN COUNTY, OHIO



Mulberry Ridge Farm, Ltd.
 Doc. 2007-0229491

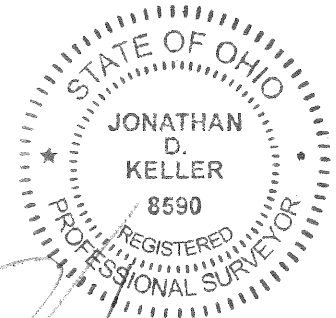


Brett A. Beam
 Doc. 2022-0896448
 13.31 Ac. Record
13.186 Ac. by Survey

LEGEND

- Iron Bar Found
- ⊙ 1" Iron Pipe Found or as indicated
- ⊠ Stone Monument Found
- △ 3-inch "MAG" Spike Set

Donna R. Greer
 Doc. 2005-009000043
 10.9100 Ac. Record



Jonathan D. Keller

Jonathan D. Keller, PS #8590
 Survey Completed December 2022
 Plat Completed November 12, 2022
 KellerSurvey.com | 567-238-9090

John S. Hadgis, Trustee
 Doc. 2005-015000001
 78.98 Ac. Record

Survey # 50740

APPROVED	
LORAIN CO.	
MAP DEPT	
DATE	11-21-22
PAGE	20-05-015
BY	D. Adelsberg

20-05-015-000-003

The bearings relate to Grid North of the State Plane Coordinate System, Ohio North Zone, NAD 83 (2011), and were derived from GNSS observations using the ODOT RTN in November, 2022.

