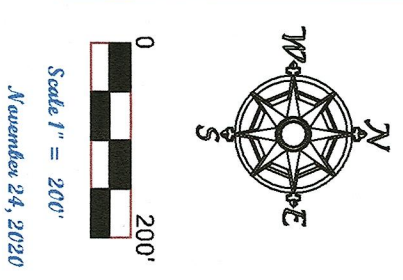


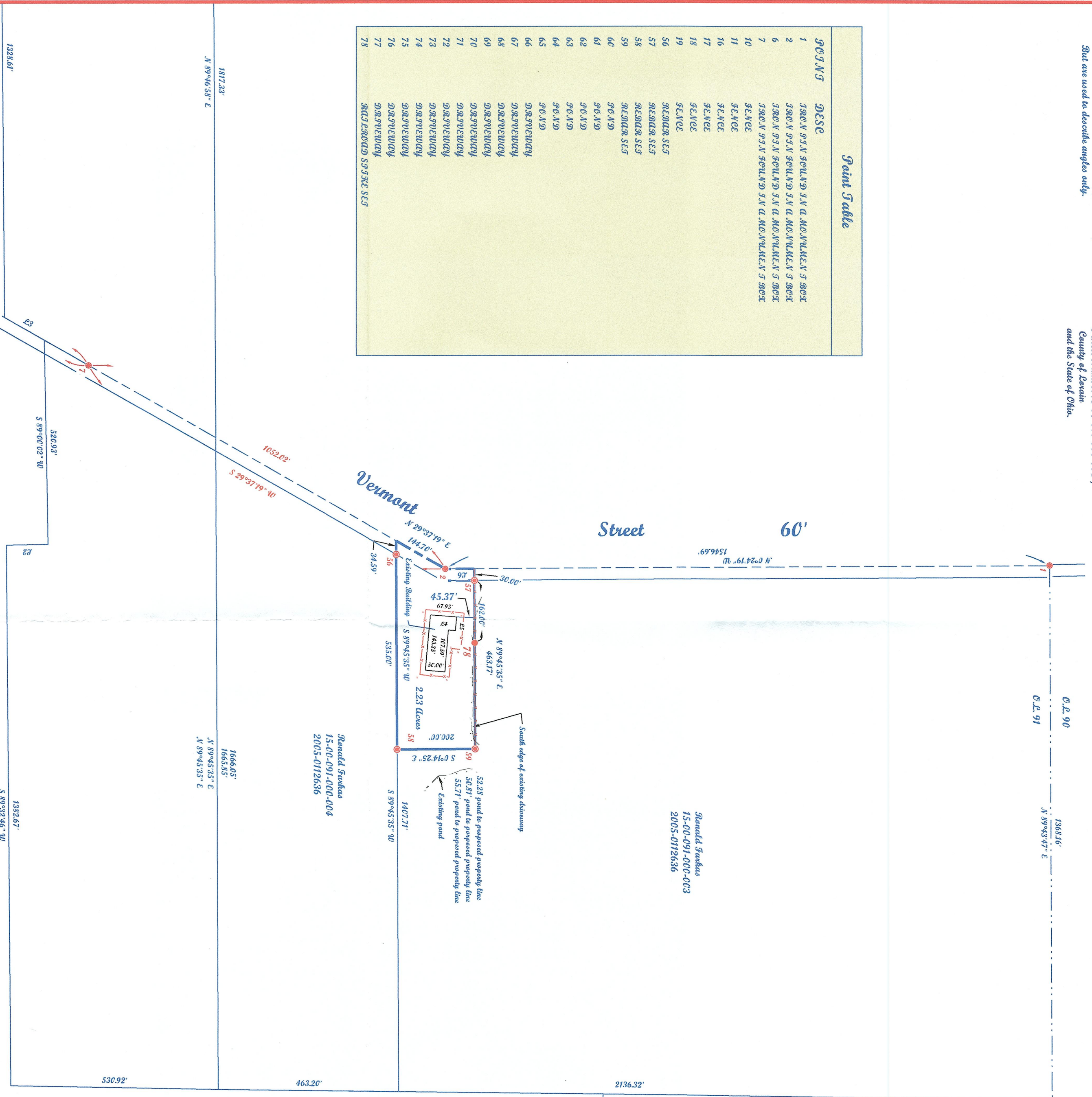
Note: Bearings and Coordinates shown are based on the Ohio State Plane (Grid North) but are used to describe angles only.

Being herein as subject Original lot 91 of Exchange Township and former a part of Lorain County, Parcel Number 15-00-091-000-003, County of Lorain and the State of Ohio.



**Point Table**

POINT	DESE
1	380°N 93°N 90°W 31' N. Q. MCQUILKEN'S 380°E
2	380°N 93°N 90°W 31' N. Q. MCQUILKEN'S 380°E
6	380°N 93°N 90°W 31' N. Q. MCQUILKEN'S 380°E
7	380°N 93°N 90°W 31' N. Q. MCQUILKEN'S 380°E
10	380°N 93°N 90°W 31' N. Q. MCQUILKEN'S 380°E
11	380°N 93°N 90°W 31' N. Q. MCQUILKEN'S 380°E
16	380°N 93°N 90°W 31' N. Q. MCQUILKEN'S 380°E
17	380°N 93°N 90°W 31' N. Q. MCQUILKEN'S 380°E
18	380°N 93°N 90°W 31' N. Q. MCQUILKEN'S 380°E
19	380°N 93°N 90°W 31' N. Q. MCQUILKEN'S 380°E
56	380°N 93°N 90°W 31' N. Q. MCQUILKEN'S 380°E
57	380°N 93°N 90°W 31' N. Q. MCQUILKEN'S 380°E
58	380°N 93°N 90°W 31' N. Q. MCQUILKEN'S 380°E
59	380°N 93°N 90°W 31' N. Q. MCQUILKEN'S 380°E
60	380°N 93°N 90°W 31' N. Q. MCQUILKEN'S 380°E
61	380°N 93°N 90°W 31' N. Q. MCQUILKEN'S 380°E
62	380°N 93°N 90°W 31' N. Q. MCQUILKEN'S 380°E
63	380°N 93°N 90°W 31' N. Q. MCQUILKEN'S 380°E
64	380°N 93°N 90°W 31' N. Q. MCQUILKEN'S 380°E
65	380°N 93°N 90°W 31' N. Q. MCQUILKEN'S 380°E
66	380°N 93°N 90°W 31' N. Q. MCQUILKEN'S 380°E
67	380°N 93°N 90°W 31' N. Q. MCQUILKEN'S 380°E
68	380°N 93°N 90°W 31' N. Q. MCQUILKEN'S 380°E
69	380°N 93°N 90°W 31' N. Q. MCQUILKEN'S 380°E
70	380°N 93°N 90°W 31' N. Q. MCQUILKEN'S 380°E
71	380°N 93°N 90°W 31' N. Q. MCQUILKEN'S 380°E
72	380°N 93°N 90°W 31' N. Q. MCQUILKEN'S 380°E
73	380°N 93°N 90°W 31' N. Q. MCQUILKEN'S 380°E
74	380°N 93°N 90°W 31' N. Q. MCQUILKEN'S 380°E
75	380°N 93°N 90°W 31' N. Q. MCQUILKEN'S 380°E
76	380°N 93°N 90°W 31' N. Q. MCQUILKEN'S 380°E
77	380°N 93°N 90°W 31' N. Q. MCQUILKEN'S 380°E
78	380°N 93°N 90°W 31' N. Q. MCQUILKEN'S 380°E



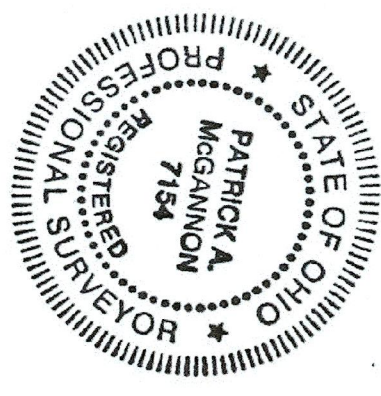
**Point Table**

POINT	BEARING	DISTANCE
P1 NE	360°32' 03\"/>	



504110

APPROVED
LOREN CO.
NOV 27 2020
DATE 10/15/21
PAGE 15-00-091
BY A.C. arden
# 21-04384



**McGannon Surveying, LLC**  
**Boundary Survey**  
**Patrick A. McGannon**  
**Registered Professional Surveyor**

Note: Only copies signed with Red ink shall be considered valid.  
*Patrick A. McGannon*  
 Patrick A. McGannon, P.S., 7154

Prepared exclusively for Ronald Swickas of 19021 Vermont Street, Grafton, Ohio 44044 under the terms of the work order as if incorporated herewith.

P.L.S.C.  
 Member Number 2433

Note: Dimensions shown in blue are second order and those shown in red are field advanced order.  
 nonstandardpage, 5/20/20  
 S.A. 1812