

Clayton H. & Pauline L. 5007  
D-401307 Pg 203 Aug 1, 1948

41178

261-44  
200-50

15' = 21.53  
50' = 71.78

89-60  
4410  
45 50

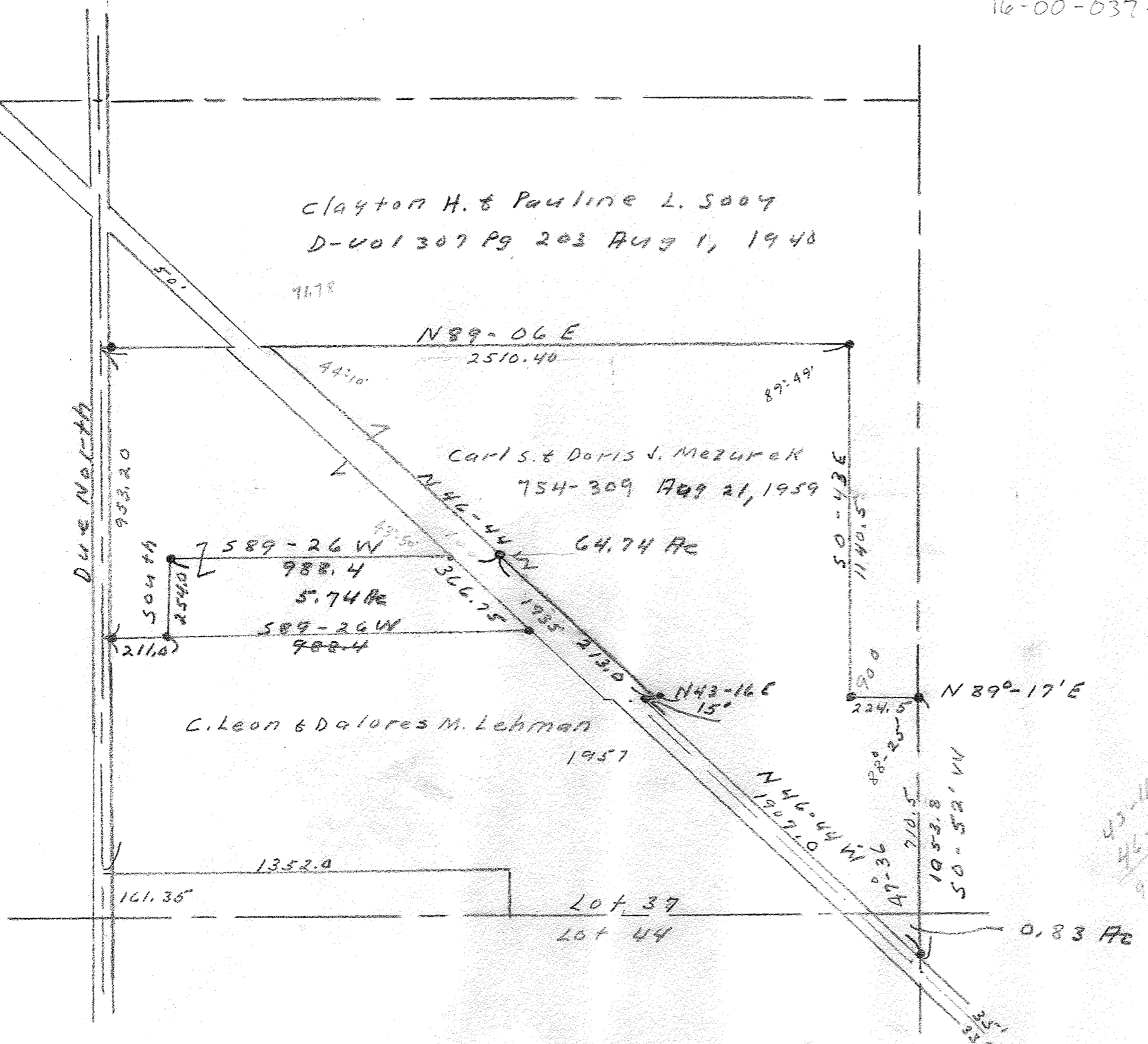
Sec. 1.43567

14356  
71.78

1.43567  
15

717835  
143567  
21.53565

Due North



sec # 240325

225-295 B60

W