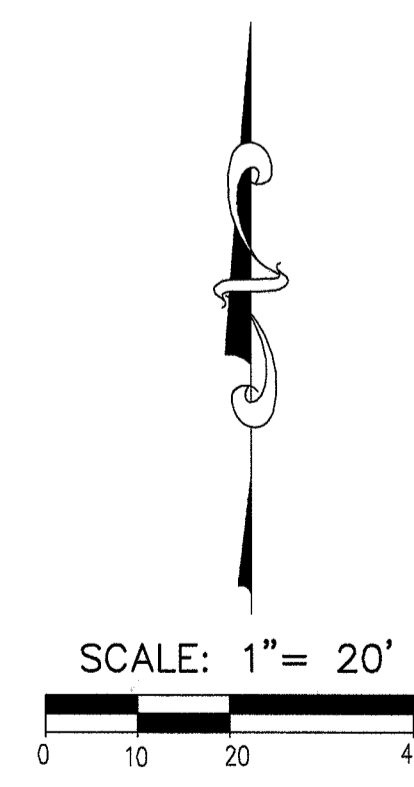
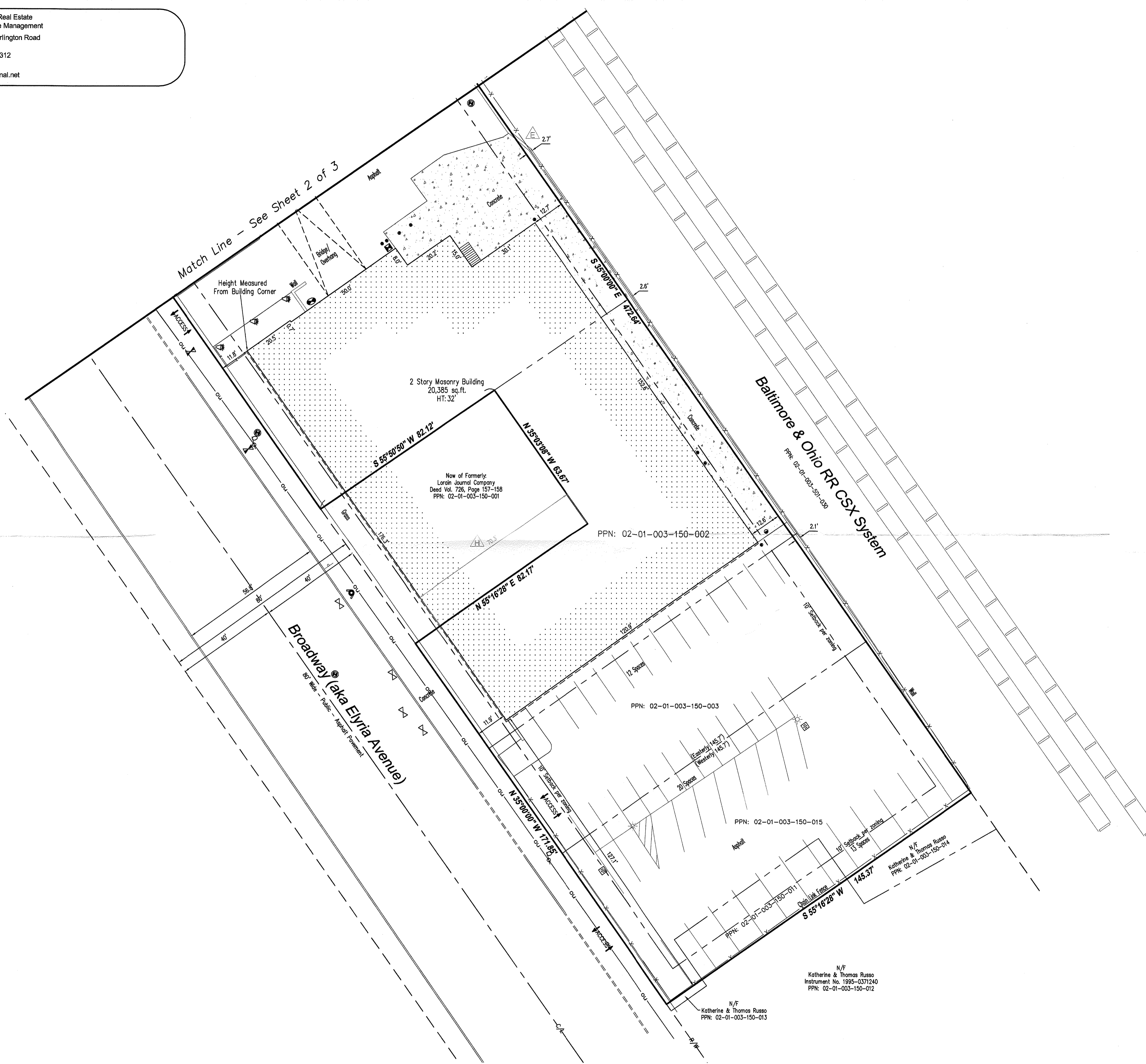




Commercial Real Estate
Due Diligence Management
3465 South Arlington Road
Suite E #183
Akron, OH 44312
330.294.1077
www.amnational.net

Legend

- R/W - Right-of-Way
- C/L - Centerline
- P.O.B. - Point of Beginning
- P.O.C. - Point of Commencement
- - Monumentation Found (as noted)
- - Concrete Monument Found
- - 5/8" Rebar Set
- △ - Mag Nail Set
- ⊗ - Encroachment
- ⊗ - Schedule B-Section II Item
- Calc. - Calculated
- Meas. - Measured
- Rec. - Record
- ⊗ - Water Valve
- ⊗ - Hydrant
- ⊗ - Manhole
- ⊗ - Sanitary Manhole
- ⊗ - Clean Out
- ⊗ - Gas Valve
- ⊗ - Gas Meter
- ⊗ - Catch Basin (Square)
- ⊗ - Catch Basin (Round)
- ⊗ - Storm Manhole
- ⊗ - Utility Box
- ⊗ - Transformer
- ⊗ - Electric Meter
- ⊗ - Power Pole
- ⊗ - Power Pole w/ Light
- ⊗ - Traffic Pole
- ⊗ - Light Pole
- ⊗ - Guy Wire
- ⊗ - Sign
- ⊗ - Bollard
- ⊗ - Handicapped Space
- ou - Overhead Utility Line
- X - Fence
- ▨ - Concrete Area
- ▨ - No Parking Area
- ▨ - Building Area



LMS SURVEYING LTD
Professional Commercial & Residential Land Surveys
P.O. Box 65 - Sharon Center - OH - 44274
330.329.6812 / Survey@LMSurveying.com