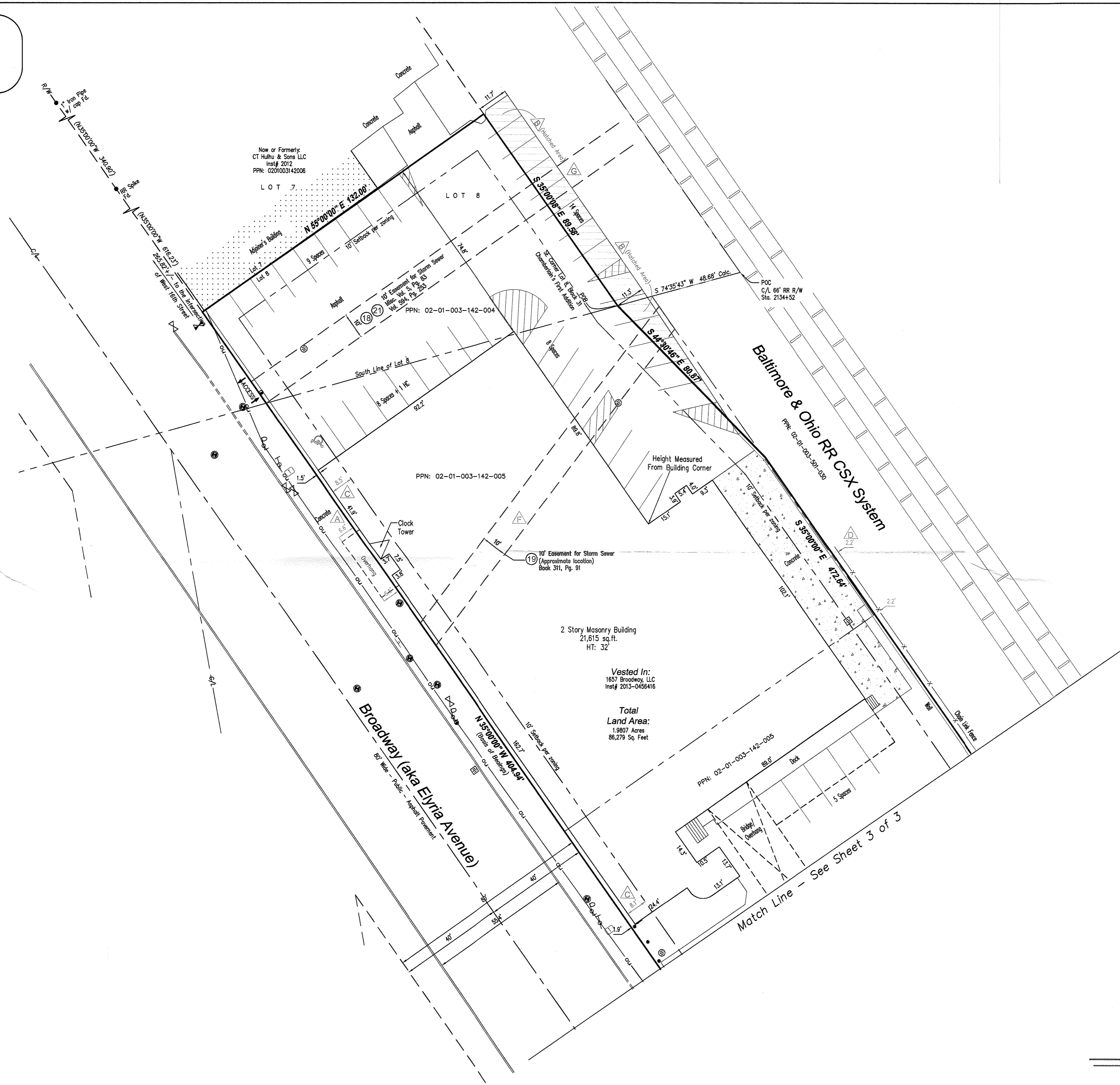




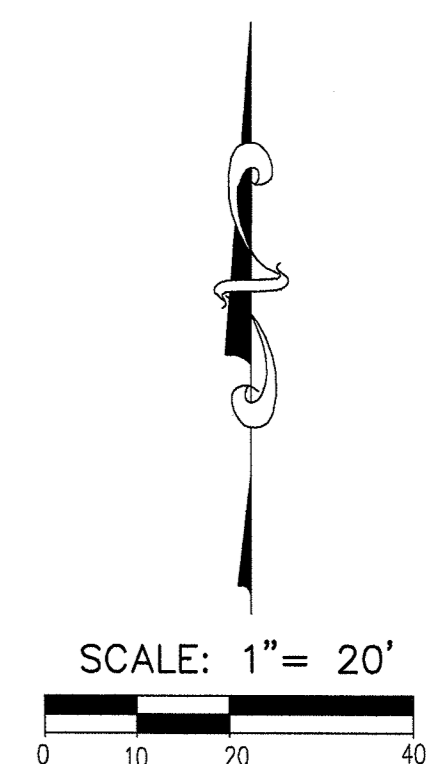
Commercial Real Estate
Due Diligence Management
3465 South Arlington Road
Suite E #183
Akron, OH 44312
330.294.1077
www.amnational.net

Legend

- R/W - Right-of-Way
- C/L - Centerline
- P.O.B. - Point of Beginning
- P.O.C. - Point of Commencement
- - Monumentation Found (as noted)
- - Concrete Monument Found
- - 5/8" Rebar Set
- △ - Nag Nail Set
- △ - Encroachment
- ⊗ - Schedule B-Section II Item
- Calc. - Calculated
- Msd. - Measured
- Rec. - Record
- ⊠ - Water Valve
- ⊠ - Hydrant
- ⊠ - Manhole
- ⊠ - Sanitary Manhole
- ⊠ - Clean Out
- ⊠ - Gas Valve
- ⊠ - Gas Meter
- ⊠ - Catch Basin (Square)
- ⊠ - Catch Basin (Round)
- ⊠ - Storm Manhole
- ⊠ - Utility Box
- ⊠ - Transformer
- ⊠ - Electric Meter
- ⊠ - Power Pole
- ⊠ - Power Pole w/ Light
- ⊠ - Traffic Pole
- ⊠ - Light Pole
- ⊠ - Guy Wire
- ⊠ - Sign
- ⊠ - Bollard
- ⊠ - Handicapped Space
- ou— - Overhead Utility Line
- X - Fence
- ▨ - Concrete Area
- ▨ - No Parking Area
- ▨ - Building Area



Match Line - See Sheet 3 of 3



LMS SURVEYING LTD
Professional Commercial & Residential Land Surveys
P.O. Box 65 - Sharon Center - OH - 44274
330.329.6812 / Survey@LMSurveying.com