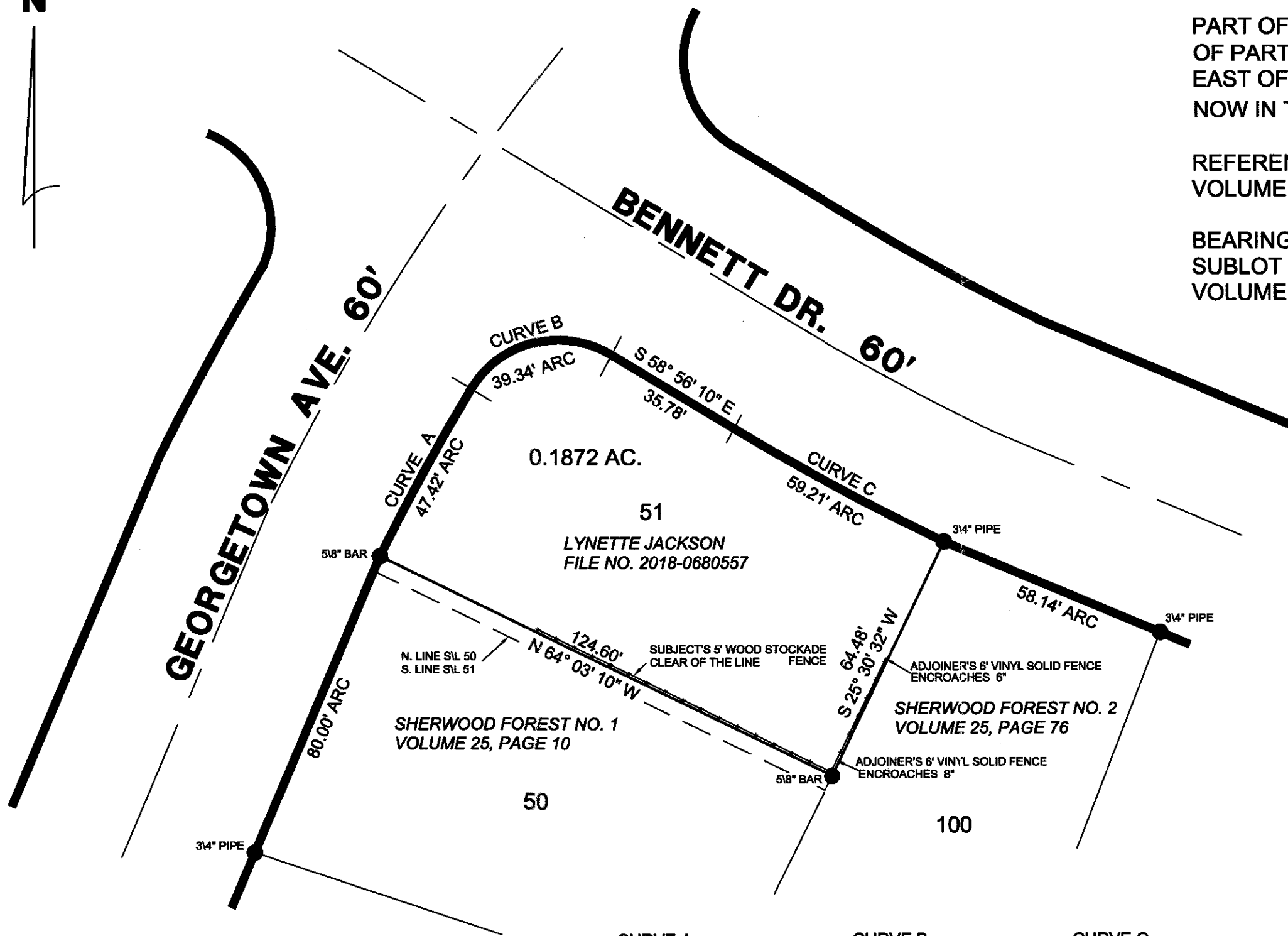


N



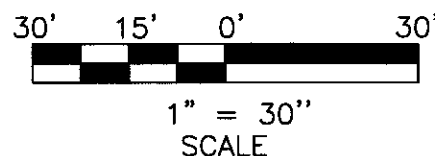
RETRACEMENT SURVEY for LYNETTE JACKSON
 PART OF SUBLOT 51 IN SHERWOOD FOREST NO. 1
 OF PART OF ORIGINAL ELYRIA TOWNSHIP LOT 26,
 EAST OF THE BLACK RIVER
 NOW IN THE CITY OF ELYRIA, COUNTY OF LORAIN, OHIO.

REFERENCES: LORAIN COUNTY MAP OFFICE PLAT
 VOLUME 25, PAGE 10 AND PLAT VOLUME 25, PG. 76.

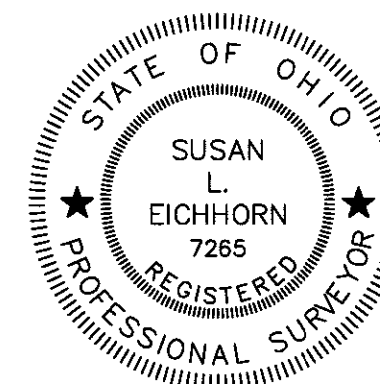
BEARINGS ARE BASED ON THE EASTERLY LINE OF
 SUBLOT 51 OF SHERWOOD FOREST NO. 1 IN PLAT
 VOLUME 25, PAGE 10.

APPROVED
 LORAIN CO.
 MAP DEPT
 DATE 9-15-20
 PAGE 6-25-026
 R. MAINES
 #20-04398-D

06-25-026-107-013



CURVE A	CURVE B	CURVE C
$\Delta = 04^\circ 40' 27''$	$\Delta = 90^\circ 08' 54''$	$\Delta = 05^\circ 33' 17''$
RADIUS = 581.25'	RADIUS = 25.00'	RADIUS = 610.73'
ARC = 47.42'	ARC = 39.34'	ARC = 59.21'
TAN = 23.72'	TAN = 25.07'	TAN = 29.63'
CHORD = 47.41'	CHORD = 35.40'	CHORD = 59.19'
CH BRG = N 28° 35' 24" E	CH BRG = N 76° 00' 08" E	CH BRG = S 61° 42' 49" E



Susan L. Eichhorn
 SUSAN L. EICHHORN P.S. 7265
 AUG. 17, 2020 20074

4123 Weymouth Rd. Medina, OH 44256
 Phone 330-723-2612
 susan@cornerstonesurveyor.com

Corner Stone Professional Land Surveyors, Inc.