

**Whitney Rd. 60'**

MON

S88°16'43"W  
1939.21' m.

S88°16'43"W 675.42'  
600.00'

801 TO  
75.42'

801 TO

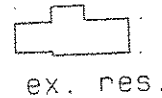
3/8" re-bar  
Fd. & Used

**Howley Rd.**

14-00-018-000-001  
Dale & Gary Preston  
V. 1336 P. 800  
71.00 AC.

N00°08'27"E  
435.83'

CIPF  
"Snezek"  
4.30' E.  
30.00' -c/1



6.0000 Ac.  
0.41 Ac. R/W

IPS

811 TO

811 TO

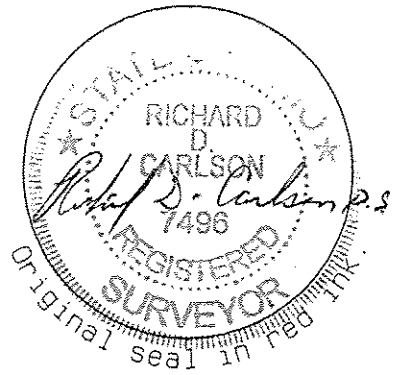
435.83'  
S00°08'27"W

Remainder  
BBM Farm Ltd.  
14-00-099-000-002 39.61 Ac.  
14-00-102-000-001 51.32 Ac.  
14-00-118-000-002 19.11 Ac.  
14-00-119-000-001 3.00 Ac.  
14-00-119-000-004 87.61 Ac.  
Doc. 2007-0225303

CIPF  
"Snezek"

S88°16'43"W 600.00'

IPS  
0.23' N.



APPROVED  
LORIN CO.  
MAPS & EPT  
DATE 8-21-20  
PAGE 14-00-118  
BY R. MAINES  
#20-04170

GRAPHIC SCALE 1"=100'



0 100 200 300

14-00-118-000-003, -004