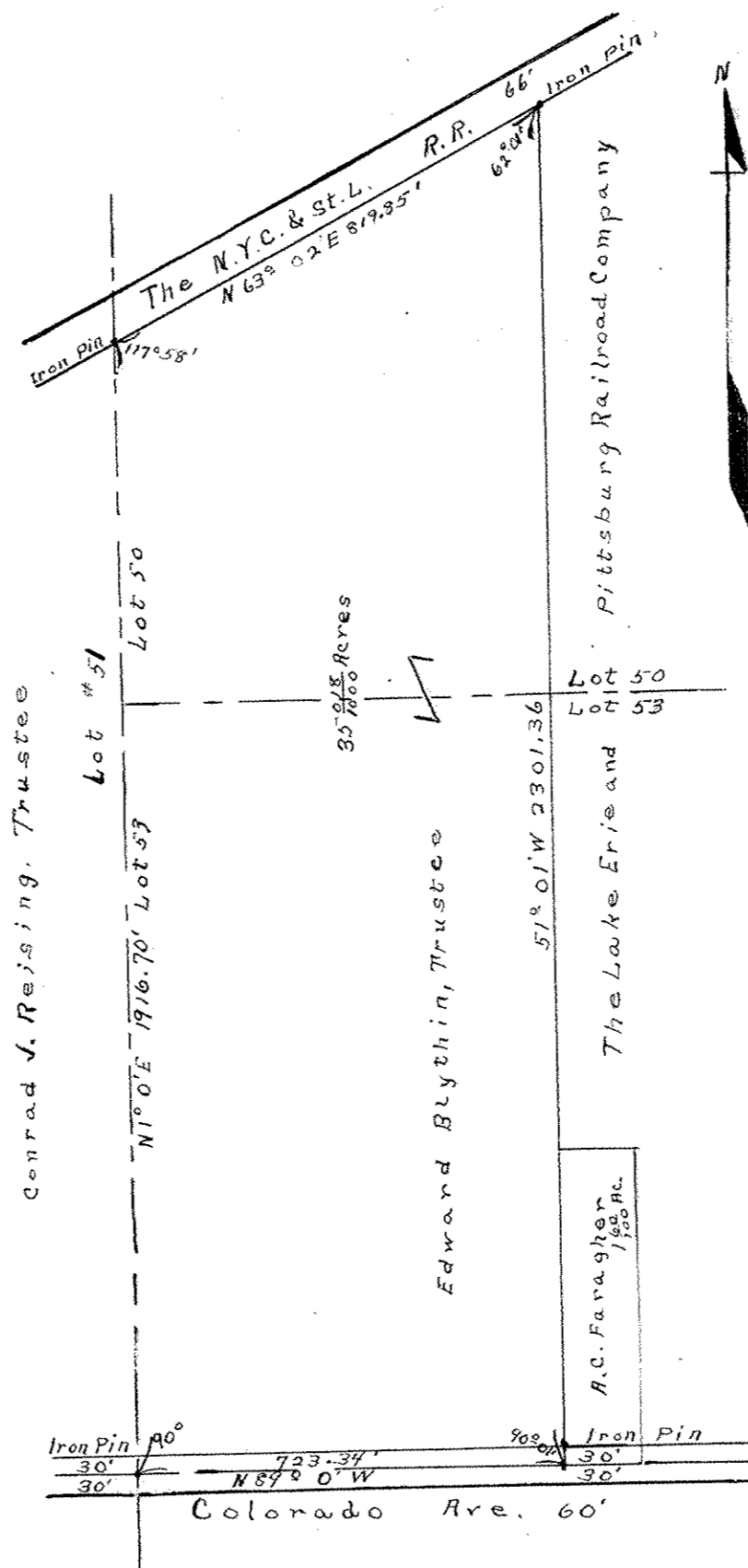


Registered Number 6.

Registrant

Subsequent Owners

MAP OF
Part of Original Lots 50 & 53,
Sheffield Twp. • Lorain City,
Lorain Co., Ohio.
Scale 1 inch=300 feet.



Surveyed By J.W. Warden, Surveyor.

August 5, 1917.

For Plat accompanying Decree of Registration see Plat Vol 9 Page 12.