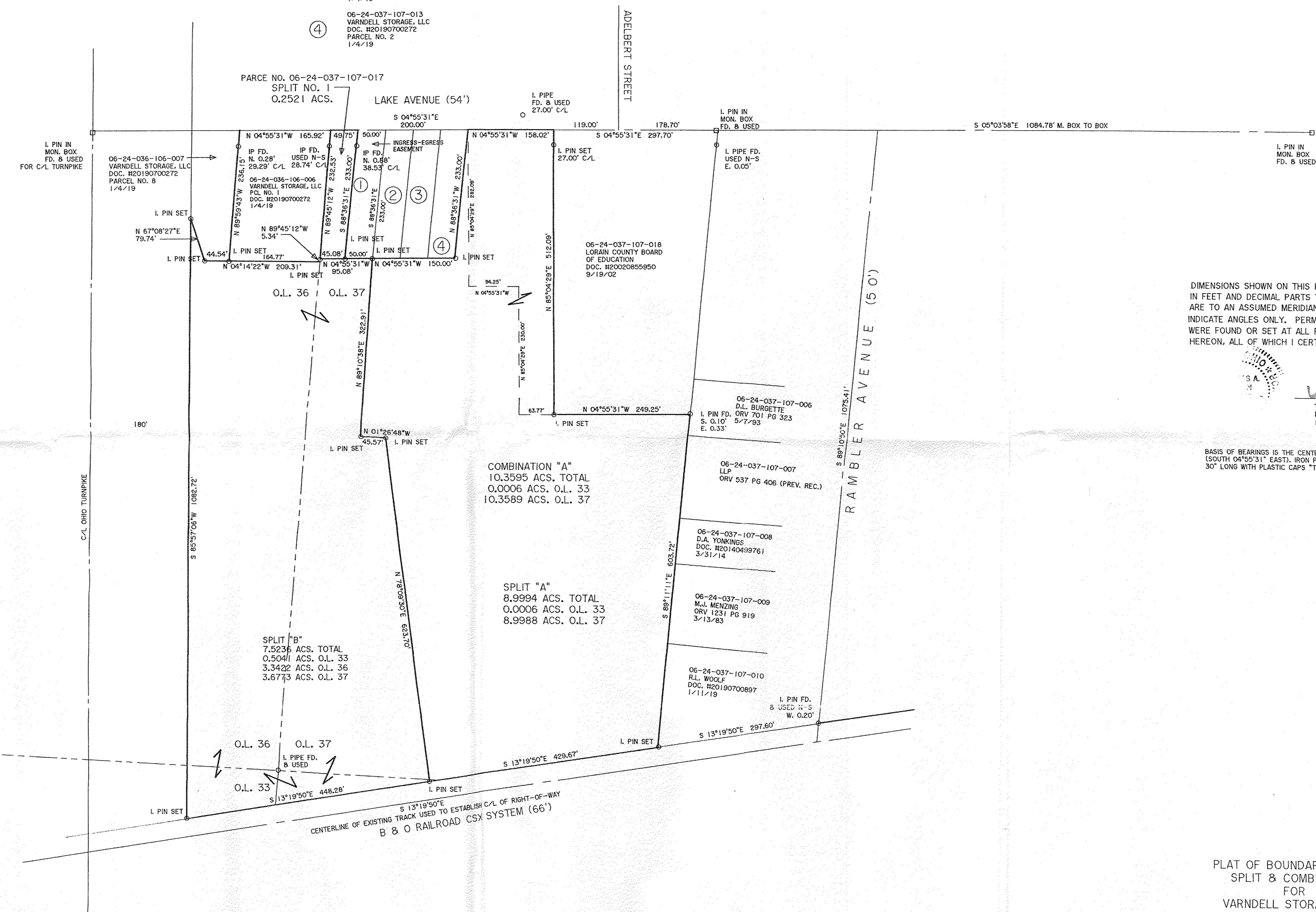
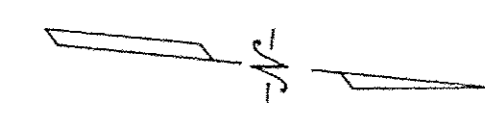
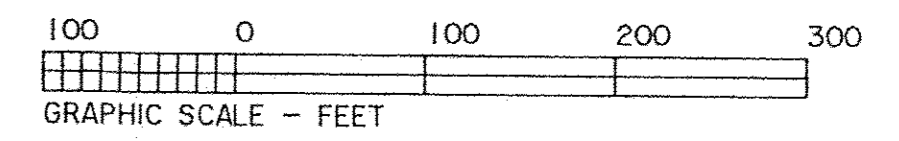


- ① 06-24-037-107-016
VARDELL STORAGE, LLC
DOC. H20190700272
PARCEL NO. 5
1/4/19
- ② 06-24-037-107-015
VARDELL STORAGE, LLC
DOC. H20190700272
PARCEL NO. 5
1/4/19
- ③ 06-24-037-107-014
VARDELL STORAGE, LLC
DOC. H20190700272
PARCEL NO. 4
1/4/19
- ④ 06-24-037-107-013
VARDELL STORAGE, LLC
DOC. H20190700272
PARCEL NO. 2
1/4/19



DIMENSIONS SHOWN ON THIS PLAT ARE EXPRESSED IN FEET AND DECIMAL PARTS THEREOF, ALL BEARINGS ARE TO AN ASSUMED MERIDIAN AND ARE USED TO INDICATE ANGLES ONLY. PERMANENT MONUMENTS WERE FOUND OR SET AT ALL POINTS INDICATED HEREON, ALL OF WHICH I CERTIFY TO BE CORRECT.



Thomas A. Simon
THOMAS A. SIMON
REG. PROFESSIONAL SURVEYOR
NO. S-7775

BASIS OF BEARINGS IS THE CENTERLINE OF LAKE AVENUE (SOUTH 04°55'31" EAST). IRON PINS SET ARE 5/8" DIAMETER, 30" LONG WITH PLASTIC CAPS "T. SIMON, S-7775".

12-17-19
6-24-037
R. MAINES
#19-04068
06-24-033-102-015, -016
06-24-036-106-010
06-24-037-107-020 thru -022

THOMAS SIMON & ASSOCIATES, INC.
PROFESSIONAL LAND SURVEYORS
150 SOUTH OLIVE STREET
ELYRIA, OHIO 44035
(440) 327-2925
FAX 327-2964

PLAT OF BOUNDARY SURVEY
SPLIT & COMBINATION
FOR
VARDELL STORAGE, LLC
BEING KNOWN AS PARTS OF ORIGINAL ELYRIA TOWNSHIP
LOT NOS. 33, 36 AND 37, WEST OF THE BLACK RIVER
CITY OF ELYRIA COUNTY OF LORAIN
STATE OF OHIO
AUGUST, 2019 SCALE: 1" = 100'

APPROVED
12-3-19
Mary Connel
Planning Commission
Secretary