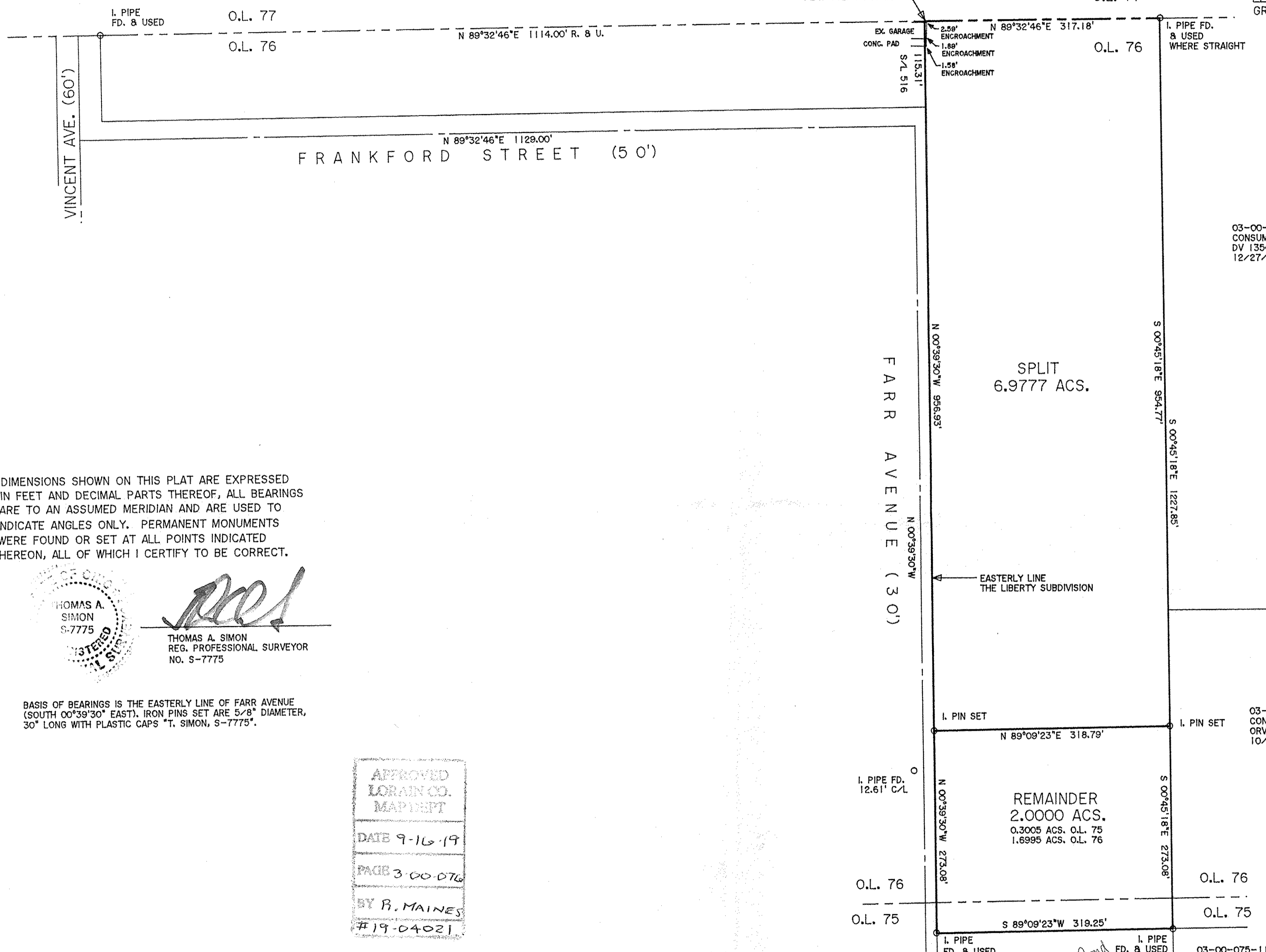


NORTHEASTERLY CORNER THE LIBERTY SUBDIVISION PLAT VOL. 9 PG. 26



03-00-076-112-006  
CONSUMERACO, INC.  
DV 1354 PG 144  
12/27/84

03-00-076-112-005  
CONSUMERACO, INC.  
ORV 1160 PG 513  
10/11/95

03-00-075-112-018  
SIX J'S FAMILY, LTD.  
DOC. H20160573628  
1/28/16

03-00-075-112-014  
PUSKAS FAMILY FLOWERS, INC.  
DV 1273 PG 148  
12/9/80

DIMENSIONS SHOWN ON THIS PLAT ARE EXPRESSED IN FEET AND DECIMAL PARTS THEREOF, ALL BEARINGS ARE TO AN ASSUMED MERIDIAN AND ARE USED TO INDICATE ANGLES ONLY. PERMANENT MONUMENTS WERE FOUND OR SET AT ALL POINTS INDICATED HEREON, ALL OF WHICH I CERTIFY TO BE CORRECT.



*Thomas A. Simon*  
THOMAS A. SIMON  
REG. PROFESSIONAL SURVEYOR  
NO. S-7775

BASIS OF BEARINGS IS THE EASTERLY LINE OF FARR AVENUE (SOUTH 00°39'30" EAST). IRON PINS SET ARE 5/8" DIAMETER, 30" LONG WITH PLASTIC CAPS "T. SIMON, S-7775".

APPROVED  
LORAIN CO.  
MAP DEPT  
DATE 9-16-19  
PAGE 3-00-076  
BY R. MAINES  
#19-04021

03-00-075-112-030  
03-00-076-112-012, -013

**THOMAS SIMON & ASSOCIATES, INC.**  
PROFESSIONAL LAND SURVEYORS

150 SOUTH OLIVE STREET  
ELYRIA, OHIO 44035  
(440) 327-2925  
FAX 327-2964

PLAT OF BOUNDARY SURVEY AND SPLIT FOR PUSKAS FAMILY FLOWERS, INC.

BEING KNOWN AS PARTS OF ORIGINAL SHEFFIELD TOWNSHIP LOT NOS. 75 AND 76  
COUNTY OF LORAIN STATE OF OHIO  
JULY, 2019 SCALE: 1" = 100'

2019-050  
JOB NO. 2019-050