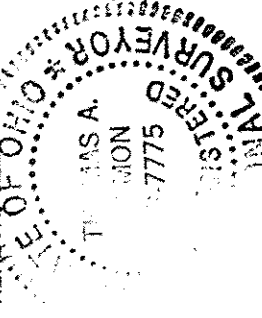
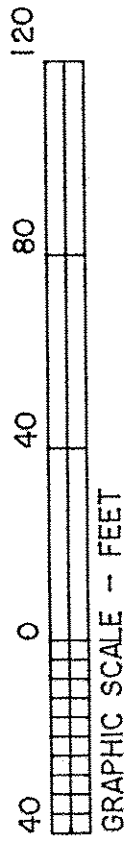


DIMENSIONS SHOWN ON THIS PLAT ARE EXPRESSED IN FEET AND DECIMAL PARTS THEREOF, ALL BEARINGS ARE TO AN ASSUMED MERIDIAN AND ARE USED TO INDICATE ANGLES ONLY. PERMANENT MONUMENTS WERE FOUND OR SET AT ALL POINTS INDICATED HEREON, ALL OF WHICH I CERTIFY TO BE CORRECT.

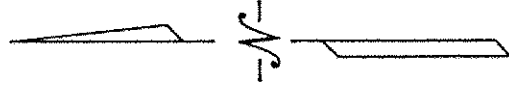


*Thomas A. Simon*  
 THOMAS A. SIMON  
 REG. PROFESSIONAL SURVEYOR  
 NO. S-7775

BASIS OF BEARINGS IS THE NORTHERLY LINE OF HOWE STREET (NORTH 90°00'00"E). IRON PINS SET ARE 5/8" DIAMETER, 30" LONG WITH PLASTIC CAPS "T. SIMON, S-7775".



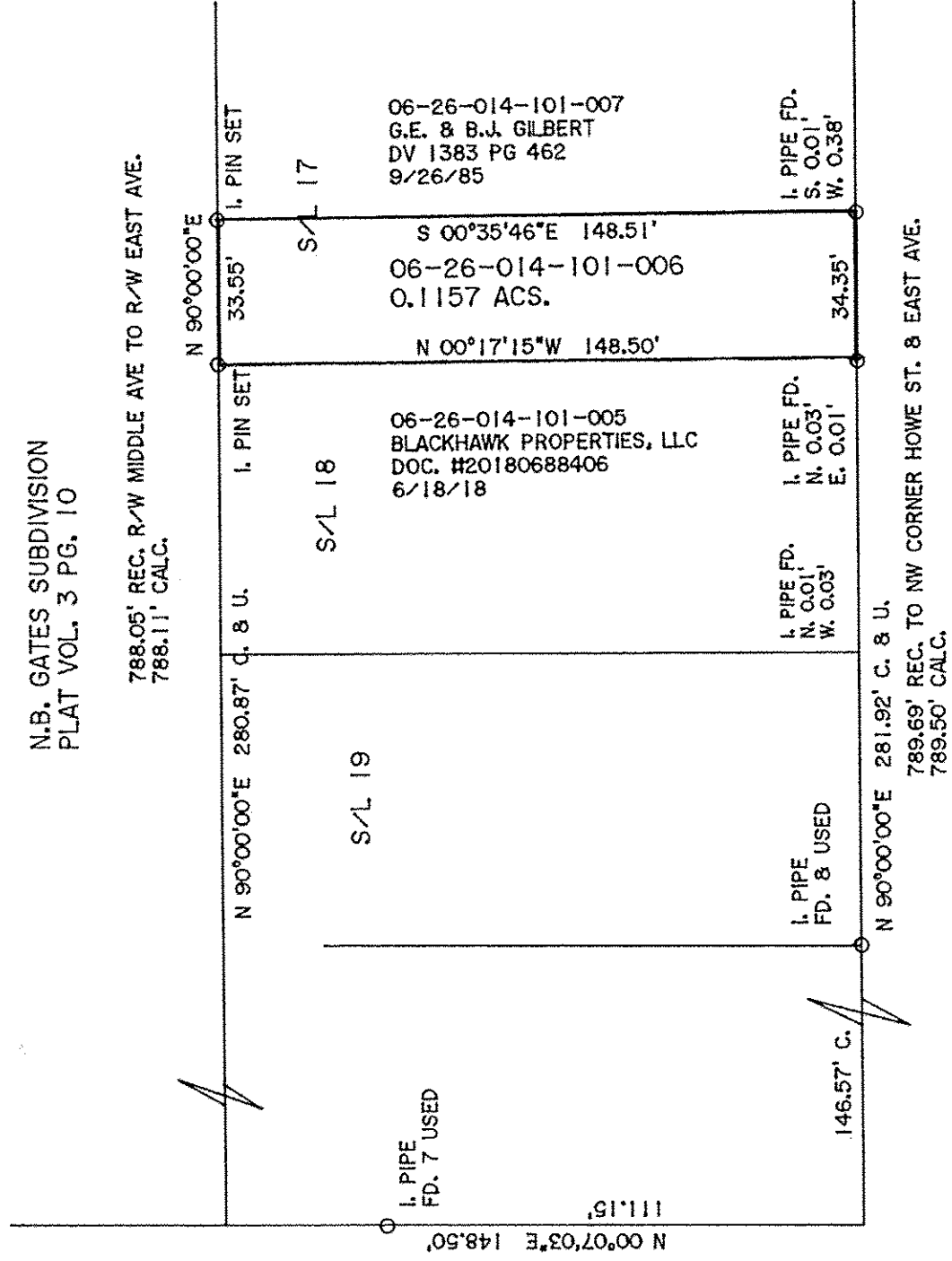
GRAPHIC SCALE - FEET



N.B. GATES SUBDIVISION  
 PLAT VOL. 3 PG. 10

788.05' REC. R/W MIDDLE AVE TO R/W EAST AVE.  
 788.11' CALC.

MIDDLE AVENUE ( 9 9' )



HOWE STREET ( 6 6' )

APPROVED LORAIN CO. MAP DEPT
DATE 6-19-19
PAGE 6-26-014
BY R. MAINES
#19-04119.D

06-26-014-101-006

PLAT OF BOUNDARY SURVEY  
 FOR  
 HUNTINGTON NATIONAL BANK

BEING KNOWN AS PART OF SUBLOT NO. 17  
 OF THE A.D. HOWE ADDITION  
 AS RECORDED IN PLAT VOLUME 2 PAGE 8 OF  
 LORAIN COUNTY MAP RECORDS AND  
 PART OF ORIGINAL ELYRIA TOWNSHIP  
 LOT NO. 14, BETWEEN THE  
 BRANCHES OF THE BLACK RIVER

THOMAS SIMON & ASSOCIATES, INC.  
 PROFESSIONAL LAND SURVEYORS

150 SOUTH OLIVE STREET  
 ELYRIA, OHIO 44035

(440) 327-2825  
 FAX 327-2964

CITY OF ELYRIA COUNTY OF LORAIN  
 STATE OF OHIO

APRIL, 2019 SCALE: 1" = 40'

JOB NO. 2019-020  
 2014-029