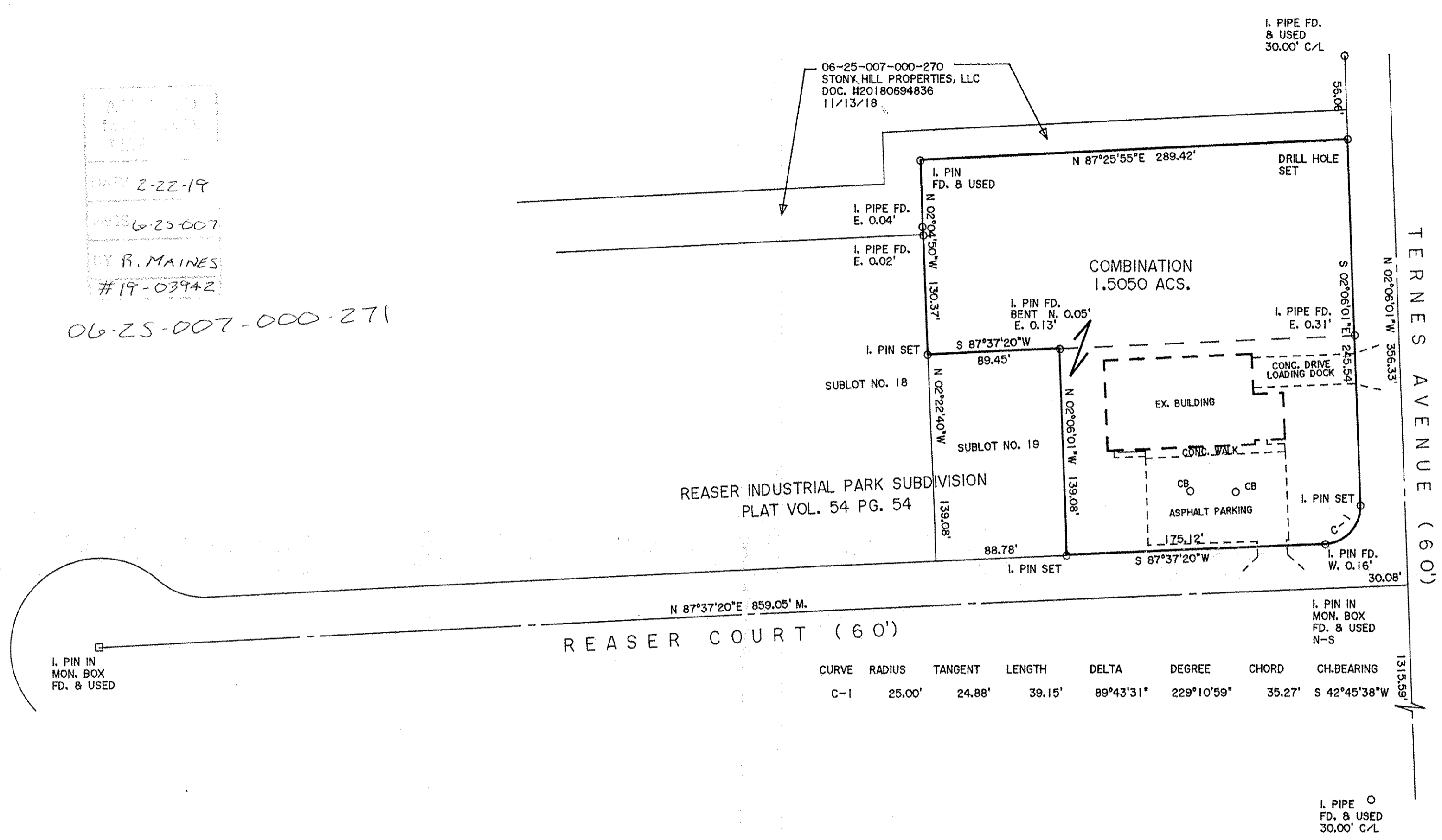


APPROVED  
 DATE 2-22-19  
 BY R. MAINES  
 #19-03942

06-25-007-000-271



DIMENSIONS SHOWN ON THIS PLAT ARE EXPRESSED IN FEET AND DECIMAL PARTS THEREOF, ALL BEARINGS ARE TO AN ASSUMED MERIDIAN AND ARE USED TO INDICATE ANGLES ONLY. PERMANENT MONUMENTS WERE FOUND OR SET AT ALL POINTS INDICATED HEREON, ALL OF WHICH I CERTIFY TO BE CORRECT.



*Thomas A. Simon*  
 THOMAS A. SIMON  
 REG. PROFESSIONAL SURVEYOR  
 NO. S-7775

BASIS OF BEARINGS IS THE CENTERLINE OF REASER COURT (NORTH 87°37'20" EAST). IRON PINS SET ARE 5/8" DIAMETER, 30" LONG WITH PLASTIC CAPS "T. SIMON, S-7775".

**THOMAS SIMON & ASSOCIATES, INC.**  
 PROFESSIONAL LAND SURVEYORS

150 SOUTH OLIVE STREET  
 ELYRIA, OHIO 44035  
 (440) 327-2925  
 FAX 327-2964

PLAT OF BOUNDARY SURVEY  
 AND COMBINATION  
 FOR  
 UHP PROPERTIES, INC.  
 EBERT PROPERTIES, IIC

BEING KNOWN AS PART OF  
 ORIGINAL ELYRIA TOWNSHIP LOT NO. 7  
 EAST OF THE BLACK RIVER

CITY OF ELYRIA COUNTY OF LORAIN  
 STATE OF OHIO

JANUARY, 2019 SCALE: 1" = 60'