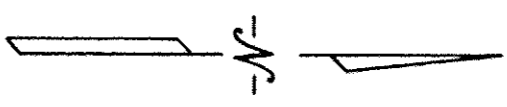


DIMENSIONS SHOWN ON THIS PLAT ARE EXPRESSED IN FEET AND DECIMAL PARTS THEREOF, ALL BEARINGS ARE TO AN ASSUMED MERIDIAN AND ARE USED TO INDICATE ANGLES ONLY. PERMANENT MONUMENTS WERE FOUND OR SET AT ALL POINTS INDICATED HEREON, ALL OF WHICH I CERTIFY TO BE CORRECT.

THOMAS A. SIMON
REG. PROFESSIONAL SURVEYOR
NO. S-7775

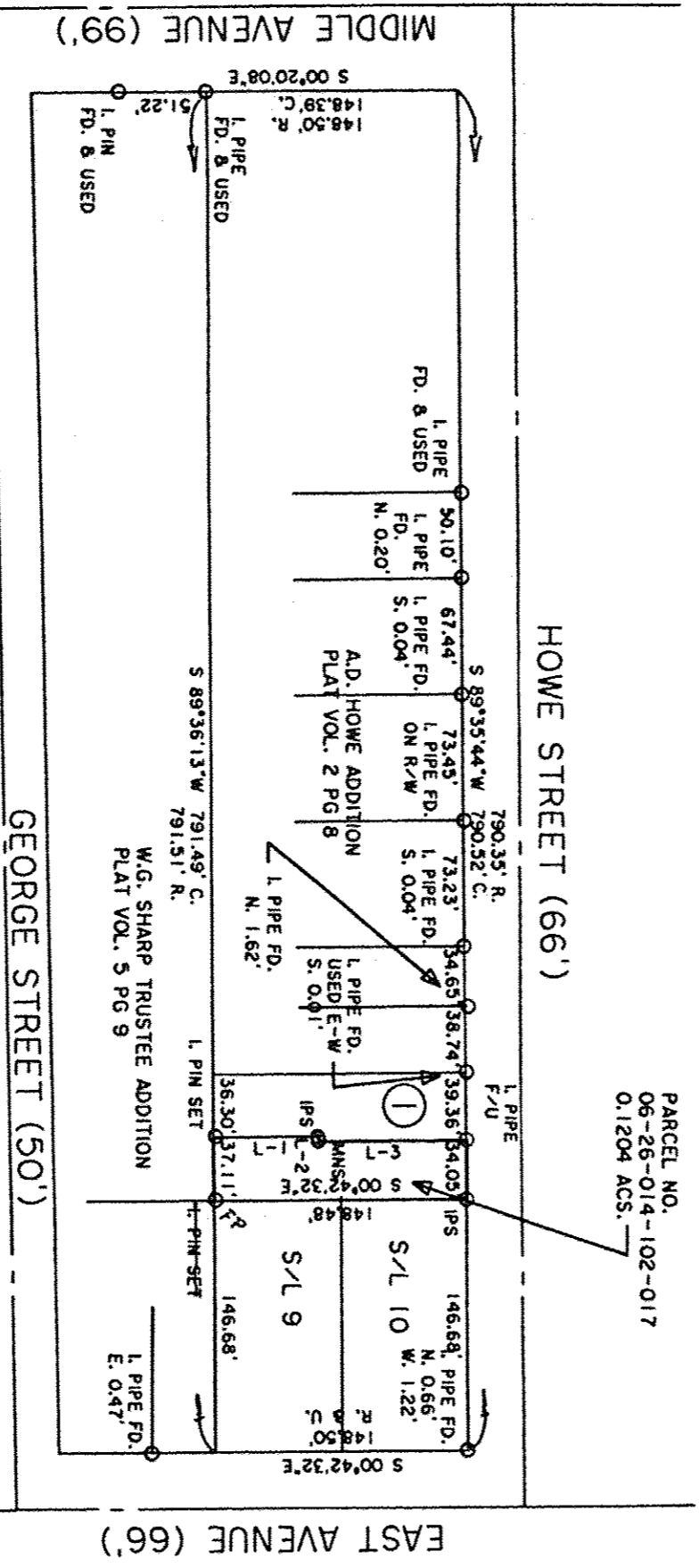
Simon



BASIS OF BEARINGS IS THE SOUTHERLY LINE OF HOWE STREET (SOUTH 89°35'44" WEST). IRON PINS SET ARE 5/8" DIAMETER, 30" LONG WITH PLASTIC CAPS "T. SIMON, S-7775".

① 06-26-014-102-016
DYNAMIC HOME BUYERS, LLC
DOC. H20170632867
6/13/17

PARCEL NO.
06-26-014-102-017
0.1204 ACS.



COURSE	BEARING	DISTANCE
L-1	N 00°42'32\" W	61.60'
L-2	N 89°35'44\" E	3.06'
L-3	N 00°42'32\" W	86.87'

APPROVED
RECORDED
BY R. MAINES
#19-04050-B
2-22-19
6-26-014

06-26-014-102-017

PLAT OF BOUNDARY SURVEY
FOR
BRETT DIEDERICH

BEING KNOWN AS PART OF SUBLLOT NO. 6
OF A.D. HOWE'S ADDITION
TO THE TOWN OF ELYRIA
AS RECORDED IN PLAT VOLUME 2 PAGE 8
OF LORAIN COUNTY MAP RECORDS
AND PART OF ORIGINAL ELYRIA TOWNSHIP
LOT NO. 14, BETWEEN THE BRANCHES OF THE
BLACK RIVER

THOMAS SIMON & ASSOCIATES, INC.
PROFESSIONAL LAND SURVEYORS

150 SOUTH OLIVE STREET
ELYRIA, OHIO 44035
(440) 327-2925
FAX 327-2964

CITY OF ELYRIA COUNTY OF LORAIN
STATE OF OHIO
NOVEMBER, 2017 SCALE: 1" = 100'