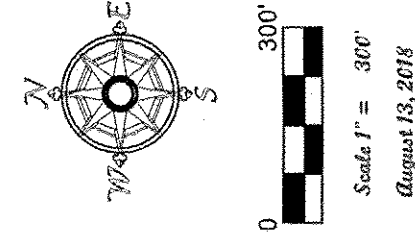
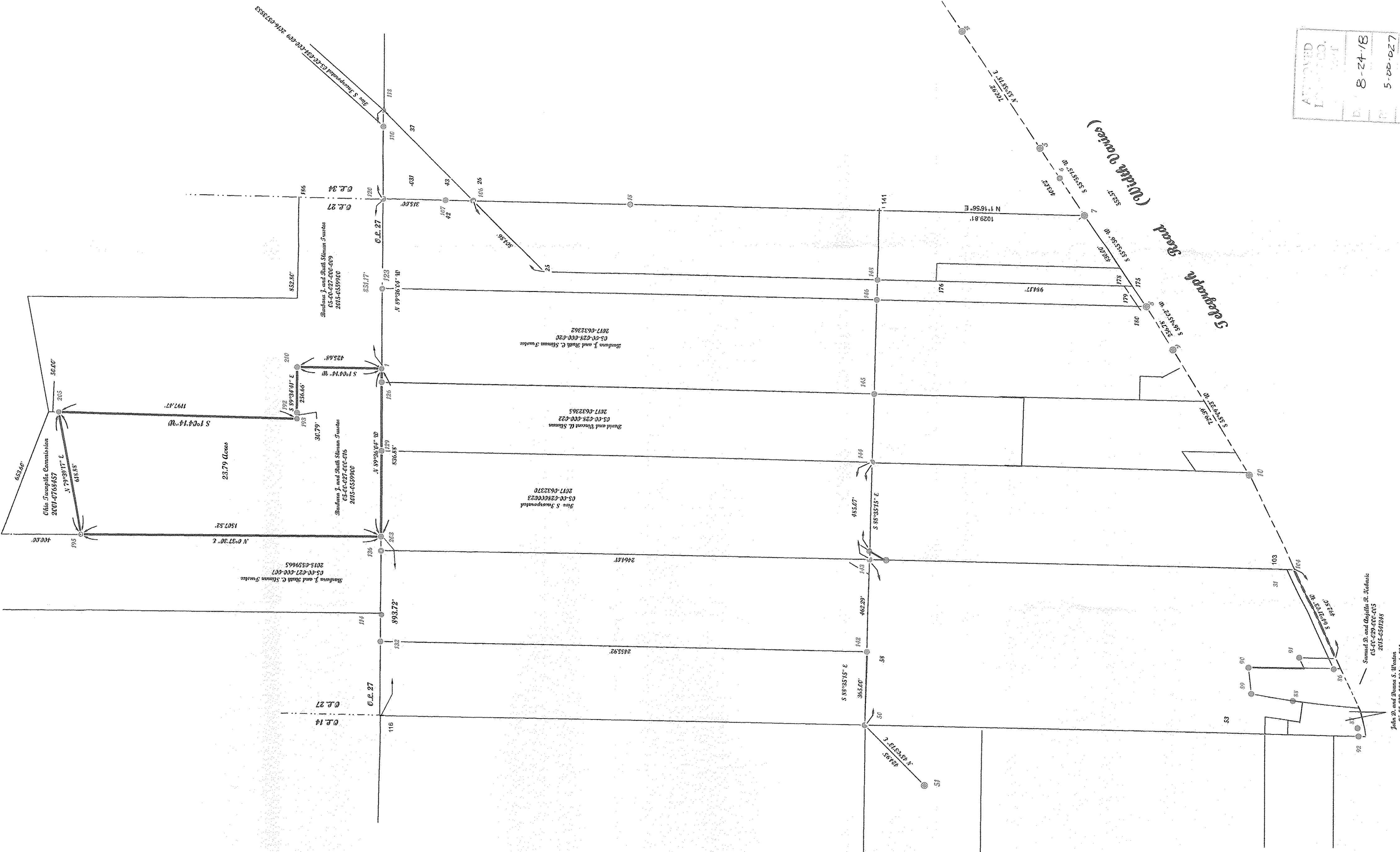


Note: Bearings shown are based on the Ohio State Plane Grid, North (3407), that are used to describe angles only.

Showing datum points of Original Deeds 28, 29, and 33 in the Township of Union, County of Ross, and the State of Ohio.



POINT	DESC
1	RESURVEY POINT
2	end of rd
3	300.00' S 10.00° E
4	300.00' S 10.00° E
5	300.00' S 10.00° E
6	300.00' S 10.00° E
7	300.00' S 10.00° E
8	300.00' S 10.00° E
9	300.00' S 10.00° E
10	300.00' S 10.00° E
11	300.00' S 10.00° E
12	300.00' S 10.00° E
13	300.00' S 10.00° E
14	300.00' S 10.00° E
15	300.00' S 10.00° E
16	300.00' S 10.00° E
17	300.00' S 10.00° E
18	300.00' S 10.00° E
19	300.00' S 10.00° E
20	300.00' S 10.00° E
21	300.00' S 10.00° E
22	300.00' S 10.00° E
23	300.00' S 10.00° E
24	300.00' S 10.00° E
25	300.00' S 10.00° E
26	300.00' S 10.00° E
27	300.00' S 10.00° E
28	300.00' S 10.00° E
29	300.00' S 10.00° E
30	300.00' S 10.00° E
31	300.00' S 10.00° E
32	300.00' S 10.00° E
33	300.00' S 10.00° E
34	300.00' S 10.00° E
35	300.00' S 10.00° E
36	300.00' S 10.00° E
37	300.00' S 10.00° E
38	300.00' S 10.00° E
39	300.00' S 10.00° E
40	300.00' S 10.00° E
41	300.00' S 10.00° E
42	300.00' S 10.00° E
43	300.00' S 10.00° E
44	300.00' S 10.00° E
45	300.00' S 10.00° E
46	300.00' S 10.00° E
47	300.00' S 10.00° E
48	300.00' S 10.00° E
49	300.00' S 10.00° E
50	300.00' S 10.00° E
51	300.00' S 10.00° E
52	300.00' S 10.00° E
53	300.00' S 10.00° E
54	300.00' S 10.00° E
55	300.00' S 10.00° E
56	300.00' S 10.00° E
57	300.00' S 10.00° E
58	300.00' S 10.00° E
59	300.00' S 10.00° E
60	300.00' S 10.00° E
61	300.00' S 10.00° E
62	300.00' S 10.00° E
63	300.00' S 10.00° E
64	300.00' S 10.00° E
65	300.00' S 10.00° E
66	300.00' S 10.00° E
67	300.00' S 10.00° E
68	300.00' S 10.00° E
69	300.00' S 10.00° E
70	300.00' S 10.00° E
71	300.00' S 10.00° E
72	300.00' S 10.00° E
73	300.00' S 10.00° E
74	300.00' S 10.00° E
75	300.00' S 10.00° E
76	300.00' S 10.00° E
77	300.00' S 10.00° E
78	300.00' S 10.00° E
79	300.00' S 10.00° E
80	300.00' S 10.00° E
81	300.00' S 10.00° E
82	300.00' S 10.00° E
83	300.00' S 10.00° E
84	300.00' S 10.00° E
85	300.00' S 10.00° E
86	300.00' S 10.00° E
87	300.00' S 10.00° E
88	300.00' S 10.00° E
89	300.00' S 10.00° E
90	300.00' S 10.00° E
91	300.00' S 10.00° E
92	300.00' S 10.00° E
93	300.00' S 10.00° E
94	300.00' S 10.00° E
95	300.00' S 10.00° E
96	300.00' S 10.00° E
97	300.00' S 10.00° E
98	300.00' S 10.00° E
99	300.00' S 10.00° E
100	300.00' S 10.00° E

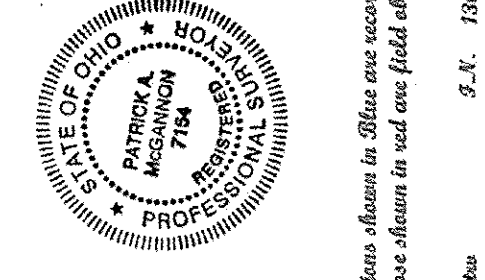


APPROVED
 LICENSED
 8-24-18
 5-00-027
 R. MAINES
 #18-03748-D

OS-00-027-000-016

McGannon Surveying, LLC
 Boundary Survey
 Patrick A. McGannon
 Registered Professional Surveyor
 1731 Galloway Drive, Franklin, Ohio 45033 (419) 282-2712
 www.mcgannonsurveying.com

Note: Only parties named with
 and shall be considered valid.
 Patrick A. McGannon
 Patrick A. McGannon J.S. 7154



Note: Dimensions shown in Blue are second
 orders and those shown in red are field observed
 readings.
 August 13, 2018