

ALTA/NSPS LAND TITLE SURVEY

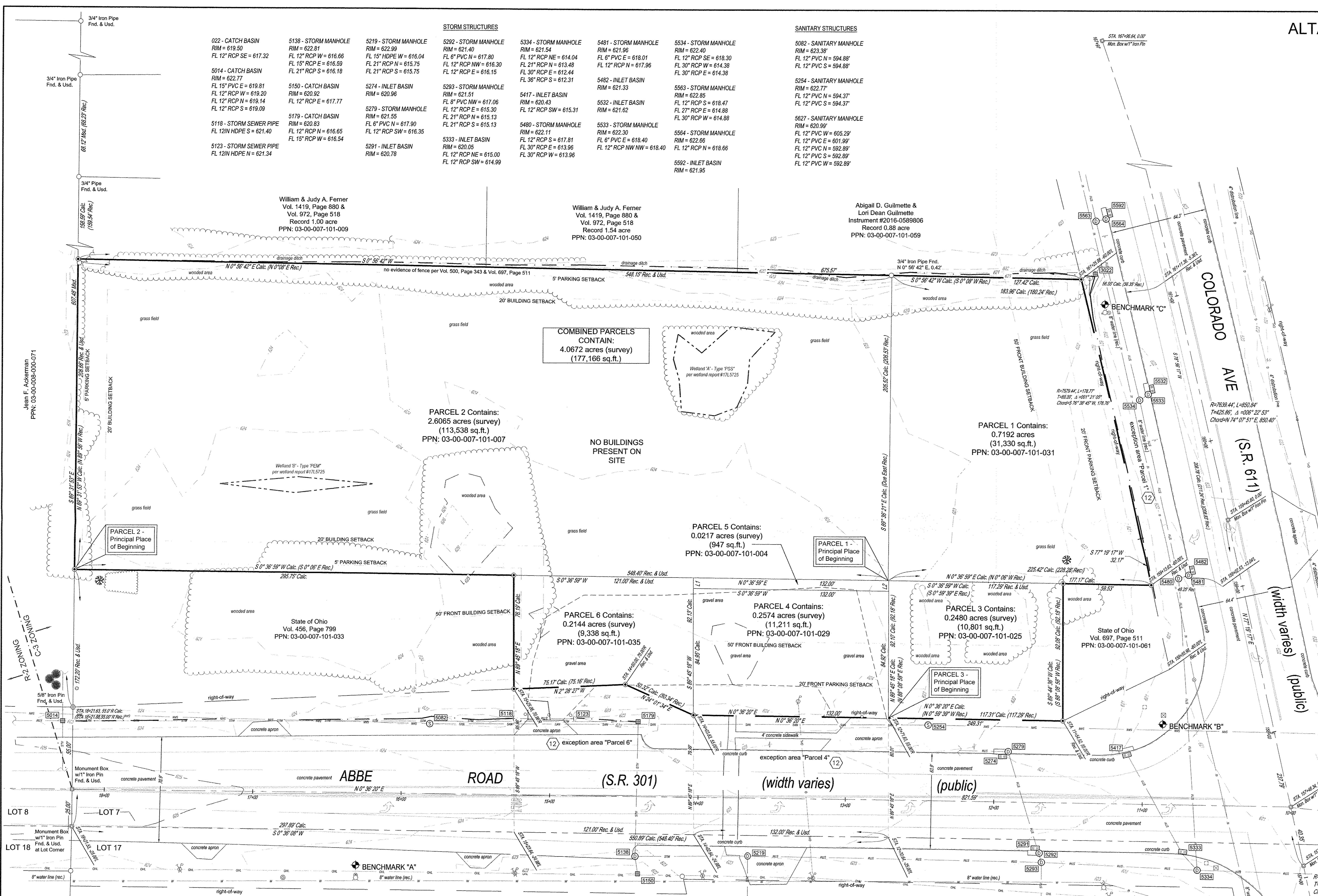
GETGO & RISER FOOD COMPANY
 ABBE RD (SR 301) & COLORADO AVE (SR 611)
 SHEFFIELD VILLAGE, OHIO

| STORM STRUCTURES | | | SANITARY STRUCTURES | | |
|--|--|--|---|--|---|
| 022 - CATCH BASIN RIM = 619.50 FL 12" RCP SE = 617.32 | 5138 - STORM MANHOLE RIM = 622.81 FL 12" RCP W = 616.66 FL 15" HDPE E = 616.59 FL 21" RCP S = 616.18 | 5219 - STORM MANHOLE RIM = 622.99 FL 15" HDPE W = 616.04 FL 21" RCP N = 615.75 FL 12" RCP S = 615.75 | 5292 - STORM MANHOLE RIM = 621.40 FL 6" PVC N = 617.80 FL 12" RCP NE = 616.30 FL 12" RCP NW = 616.30 FL 12" RCP E = 616.15 | 5334 - STORM MANHOLE RIM = 621.54 FL 12" RCP NE = 614.04 FL 12" RCP NW = 613.48 FL 30" RCP E = 612.44 FL 38" RCP S = 612.31 | 5481 - STORM MANHOLE RIM = 621.96 FL 6" PVC E = 618.01 FL 12" RCP N = 617.96 |
| 5014 - CATCH BASIN RIM = 622.77 FL 15" PVC E = 619.81 FL 12" RCP W = 619.20 FL 12" RCP N = 619.14 FL 12" RCP S = 619.09 | 5150 - CATCH BASIN RIM = 620.92 FL 12" RCP E = 617.77 | 5274 - INLET BASIN RIM = 620.96 | 5293 - STORM MANHOLE RIM = 621.51 FL 8" PVC NW = 617.06 FL 12" RCP E = 615.30 FL 21" RCP N = 615.13 | 5417 - INLET BASIN RIM = 620.43 FL 12" RCP SW = 615.31 | 5534 - STORM MANHOLE RIM = 621.33 |
| 5118 - STORM SEWER PIPE FL 12IN HDPE S = 621.40 | 5179 - CATCH BASIN RIM = 620.83 FL 12" RCP N = 616.65 FL 15" RCP W = 616.54 | 5279 - STORM MANHOLE RIM = 621.55 FL 6" PVC N = 617.90 FL 12" RCP SW = 616.35 | 5333 - INLET BASIN RIM = 620.05 FL 12" RCP NE = 615.00 FL 12" RCP SW = 614.99 | 5480 - STORM MANHOLE RIM = 622.11 FL 12" RCP S = 617.81 FL 30" RCP E = 613.96 FL 30" RCP W = 613.96 | 5533 - STORM MANHOLE RIM = 622.30 FL 6" PVC E = 618.40 FL 12" RCP NW NW = 618.40 |
| 5123 - STORM SEWER PIPE FL 12IN HDPE N = 621.34 | | 5291 - INLET BASIN RIM = 620.78 | | 5592 - INLET BASIN RIM = 621.95 | 5592 - INLET BASIN RIM = 621.95 |

| SANITARY STRUCTURES | | |
|---|---|--|
| 5082 - SANITARY MANHOLE RIM = 623.38 FL 12" PVC N = 594.88 FL 12" PVC S = 594.88 | 5254 - SANITARY MANHOLE RIM = 622.77 FL 12" PVC N = 594.37 FL 12" PVC S = 594.37 | 5627 - SANITARY MANHOLE RIM = 620.99 FL 12" PVC W = 605.29 FL 12" PVC E = 601.99 FL 12" PVC W = 592.89 FL 12" PVC S = 592.89 FL 12" PVC W = 592.89 |

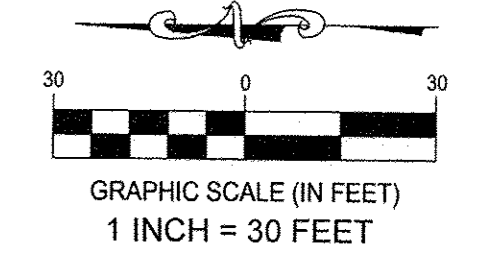
| TOPOGRAPHIC LEGEND | |
|--------------------------|-------------------|
| ⊕ Power / Telephone Pole | ⚓ Sign |
| ⊕ Power Pole | ⊕ Bollard |
| ⊕ Signal Pole | ⊕ Gas Valve |
| ⊕ Water Valve | ⊕ Guy Wire |
| ⊕ Hydrant | ⊕ Electric Meter |
| ⊕ Clean Out | ⊕ Gas Meter |
| ⊕ Sanitary Manhole | ⊕ Air Conditioner |
| ⊕ Catchbasin | ⊕ Mail Box |
| ⊕ Storm Inlet Basin | ⊕ Unknown Valve |
| ⊕ Storm Drainage Manhole | ⊕ End Storm Drain |
| ⊕ Telephone Manhole | ⊕ Light Pole |
| ⊕ Electric Box (access) | ⊕ Downspout |
| ⊕ Traffic Control Box | ⊕ Monitoring Well |
| ### Structure Number | ⊕ Ground Light |

| SURVEY LEGEND | |
|--|----------------------------|
| ⊕ - 5/8" Iron Pin Set w/cap CESO, Inc | ⊕ - Observed |
| ⊕ - 1" Iron Pin Found unless otherwise described | ⊕ - Measured |
| ⊕ - Iron Pipe Found & Described | ⊕ - Rec. (R) - Deed |
| ⊕ - Railroad Spike Found | ⊕ - Used (U) - Used |
| ⊕ - Monument Fnd. & Usd. | ⊕ - Calc. (C) - Calculated |



BENCHMARK DATUM: NAVD 88
 BM "A": Top Nut of Hydrant on West side of Abbe Rd. Approx. 630' North from intersection with Colorado Ave. = 625.83'
 BM "B": "X" cut into NW bolt on traffic signal pole at NE corner intersection of Abbe Rd. & Colorado Ave. = 622.28'
 BM "C": Top Nut of Hydrant on North side of Colorado Ave. approx. 350' east of intersection with Abbe Rd. = 625.19'

BASIS OF BEARINGS
 The Basis of Bearings for this survey is
 NAD 83, OHIO NORTH



GETGO
ALTA/NSPS LAND TITLE SURVEY
 NE Corner Abbe Rd (SR 301) at Colorado Ave (SR 611) Original Sheffield Twp., Lot 7
 Village of Sheffield Lorain County, Ohio

| | |
|-----------------|----------------------|
| SCALE: 1" = 30' | DATE: April 18, 2018 |
| DESIGN: na | JOB NO.: 754520 |
| DRAWN: GRE | SHEET NO.: 2 OF 2 |
| CHECKED: swc | |

WWW.CESONC.COM