

APPROVED
LOCAL GOV.
PLAT

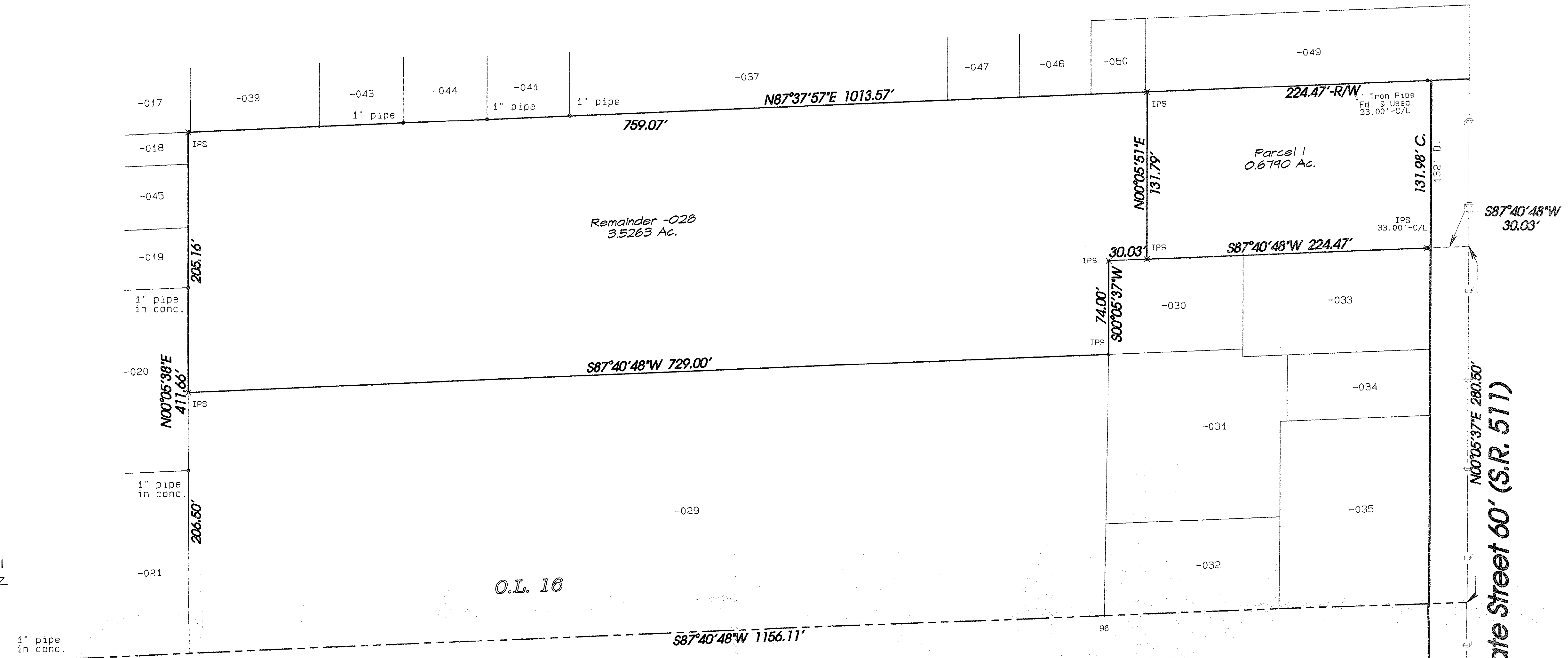
DATE 2-15-18

PAGE 13-11-016

BY R. MAINES

#18-037B3

13-11-016-109-051
-052



Plat of Survey
for

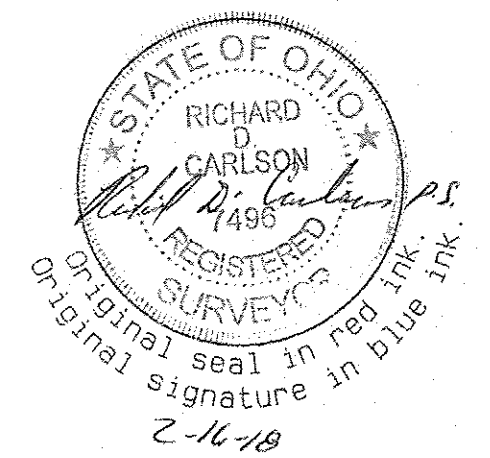
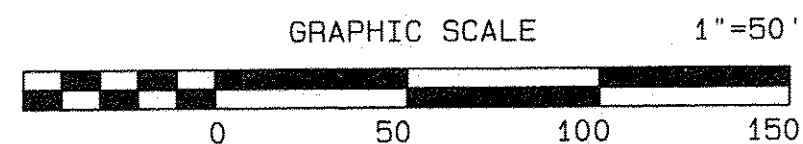
Kipton Community Church

Camden Twp. Tract 11, O.L. 16
(T4N, R19W) Ohio
Lorain County

Adjoining Owners

- 13-11-016-109-049
Mary B. Greene Pcl. 1 0.34 Ac. Doc. 2014-0500653
- 13-11-016-109-050
Mary B. Greene Pcl. 2 0.06 Ac. Doc. 2014-0500653
- 13-11-016-109-046
John D. & Jane T. Dostal Pcl. 2 0.16 Ac. O.R. 314 P. 565
- 13-11-016-109-047
Dennis A. & Rose A. Alferio 0.16 Ac. O.T. 314 P. 467
- 13-11-016-109-037
Community Church Of Kipton 0.85 Ac. V. 869 p. 544
- 13-11-016-109-041
Peter J. & Maria C. Mutnansky Pcl. 2 0.22 Ac. Doc. 2002-0807440
- 13-11-016-106-044
James Sr. & Carrie A. Osborne 0.22 Ac. Doc. 2005-0085095
- 13-11-016-106-043
Duane & Laurie Auble 0.22 Ac. O.R. 1049 P. 535
- 13-11-016-109-039
George I. & Dena M. Dennis Pcl. 2 0.36 Ac. Doc. 1999-0611989
- 13-11-016-109-017
Denise L. Mullins Pcl. 1 0.15 Ac. Doc. 2015-0552428
- 13-11-016-109-018
Denise L. Mullins Pcl. 2 0.09 Ac. Doc. 2015-0552428
- 13-11-016-109-045
Denise L. Mullins Pcl. 3 0.18 Ac. Doc. 2015-0552428
- 13-11-016-109-019
Harold A. & Emma Henderson 0.18 Ac. O.R. 1014 P. 96
- 13-11-016-109-020
Harold A. Henderson 0.50 Ac. V. 1035 P. 726
- 13-11-016-109-029
The Board of Education of Camden Township Rural School District Lorain County Ohio 3.50 ac. V. 196 P. 254
- 13-11-016-109-030
Leon G. & Betty A. Groot Pcl. 3 0.18 Ac. Doc. 2005-0099962
- 13-11-016-109-033
Leon G. & Betty A. Groot Pcl. 1 0.29 Ac. Doc. 2005-0099962

Revised 2-15-18 Parcel 1 & Remainder of -028



State Street 60' (S.R. 511)

© RW MON