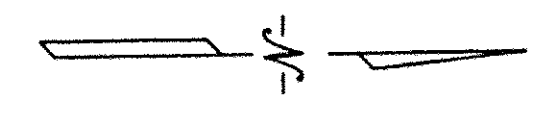


242 thru-246
 06-25-001-000-246
 06-25-007-000-267

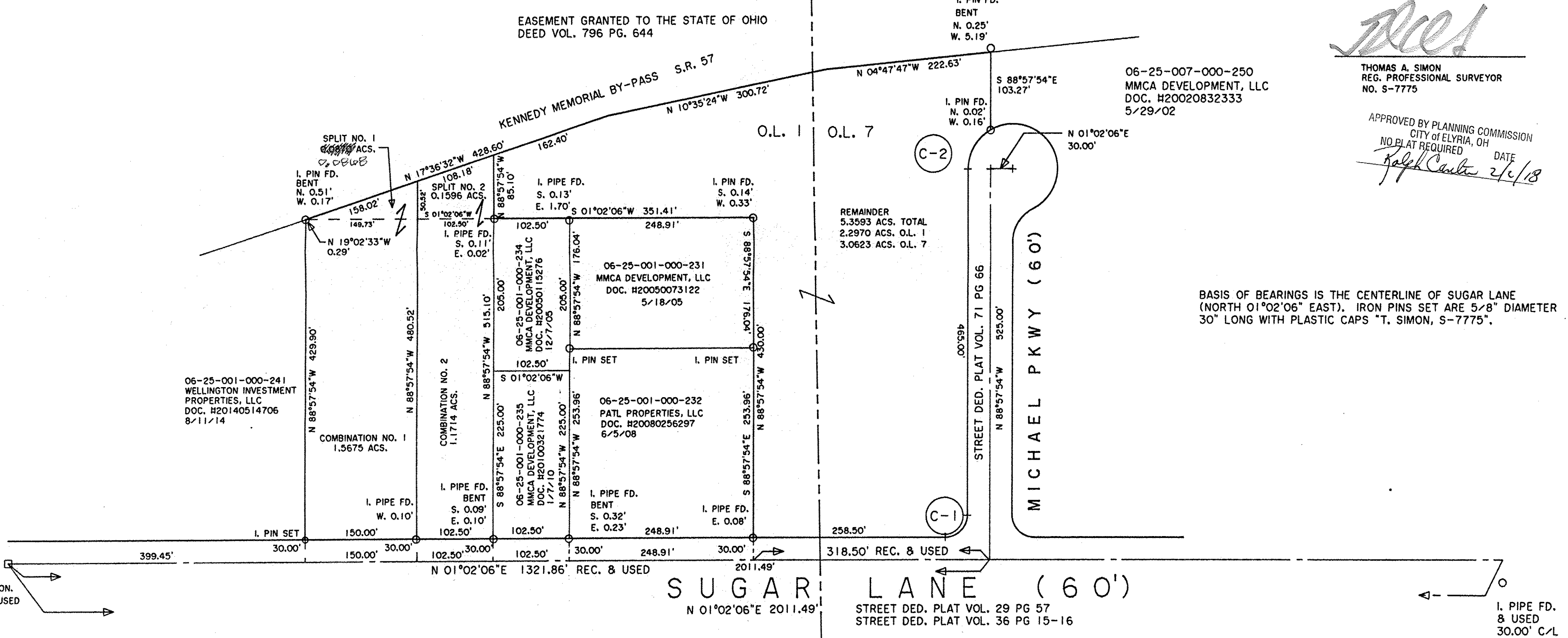
APPROVED
 D. 2-7-18
 W. 6-143
 BY R. MAINES
 #18-03781



CURVE	RADIUS	TANGENT	LENGTH	DELTA	DEGREE	CHORD	CH. BEARING
C-1	30.00'	30.00'	47.12'	90°00'00"	190°59'09"	42.43'	S 43°57'54"E
C-2	60.00'	34.64'	62.83'	60°00'01"	95°29'32"	60.00'	S 58°57'53"E

DIMENSIONS SHOWN ON THIS PLAT ARE EXPRESSED IN FEET AND DECIMAL PARTS THEREOF, ALL BEARINGS ARE TO AN ASSUMED MERIDIAN AND ARE USED TO INDICATE ANGLES ONLY. PERMANENT MONUMENTS WERE FOUND OR SET AT ALL POINTS INDICATED HEREON, ALL OF WHICH I CERTIFY TO BE CORRECT.

Thomas A. Simon
 THOMAS A. SIMON
 REG. PROFESSIONAL SURVEYOR
 NO. S-7775
 APPROVED BY PLANNING COMMISSION
 CITY OF ELYRIA, OH
 NO PLAT REQUIRED
 DATE 2/6/18
Ralph Carter



I. PIPE IN MON. BOX FD. & USED

I. PIPE FD. & USED 30.00' C/L

THOMAS SIMON & ASSOCIATES, INC.
 PROFESSIONAL LAND SURVEYORS

150 SOUTH OLIVE STREET
 ELYRIA, OHIO 44035

(440) 327-2925
 FAX 327-2964

PLAT OF BOUNDARY SURVEY & SPLIT FOR MMCA DEVELOPMENT, LLC

BEING KNOWN AS PARTS OF ORIGINAL ELYRIA TOWNSHIP LOT NOS. 1 AND 7, EAST OF THE BLACK RIVER

CITY OF ELYRIA COUNTY OF LORAIN STATE OF OHIO

SEPTEMBER, 2005 SCALE: 1" = 100'