

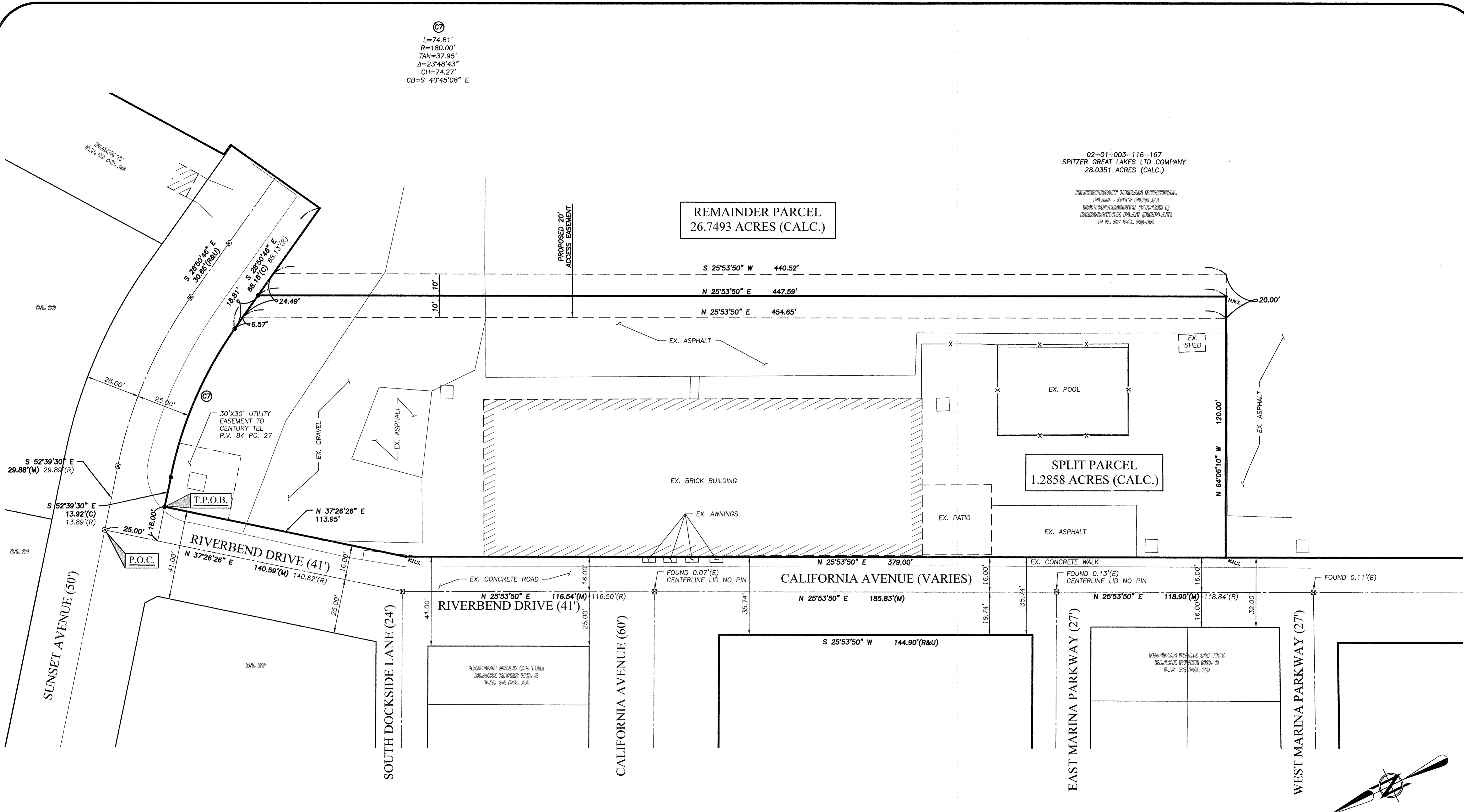
Ⓢ  
 L=74.81'  
 R=180.00'  
 TAN=37.95'  
 Δ=23°48'43"  
 CH=74.27'  
 CB=S 40°45'08" E

02-01-003-116-167  
 SPITZER GREAT LAKES LTD COMPANY  
 28.0351 ACRES (CALC.)

RIVERFRONT URBAN RENEWAL  
 PLAN - CITY PUBLIC  
 IMPROVEMENTS (PHASE I)  
 DEDICATION PLAN (REPLAT)  
 P.V. 67 PG. 28-30

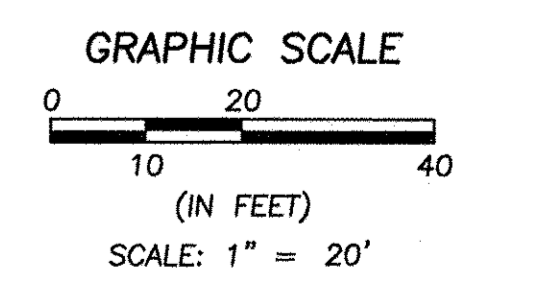
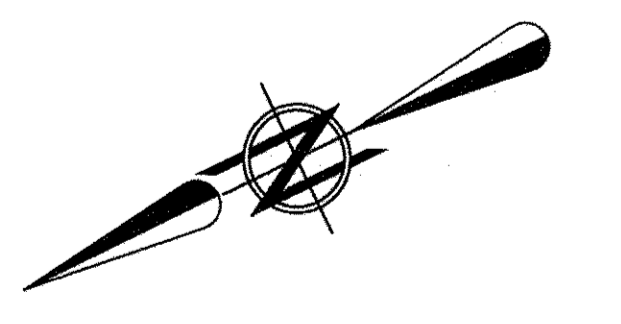
REMAINDER PARCEL  
 26.7493 ACRES (CALC.)

SPLIT PARCEL  
 1.2858 ACRES (CALC.)



APPROVED  
 AS TO DESCRIPTION ONLY  
 Date: Feb 23, 2017  
 City of Lorain  
 Per: *Dennis Howard, P.E.*  
 Engineering Dept.

APPROVED BY THE LORAIN CITY PLANNING  
 COMMISSION. NO PLAN REQUIRED  
*D. Reso 3-17*  
 SECRETARY LORAIN CITY PLANNING COMMISSION



DATE	BY	DESCRIPTION
01-27-2017	AMK	PRELIMINARY ISSUE FOR REVIEW
02-02-2017	AMK	ISSUE TO CLIENT

DRAWN BY:  
 JAD

CHECKED BY:  
 AMK

**BRAMHALL**  
 ENGINEERING AND SURVEYING COMPANY  
 801 MOORE ROAD AVON, OHIO 44011  
 (440) 934 - 7878 (440) 934 - 7879 FAX

SHEET  
 2 OF 2  
 JOB NO.  
 16-4618

J:\164618\_Grande Ln\_SplitParcel\16-4618\_Lot Split.dwg, Plotted: Feb 02, 2017, 9:28am