

BOUNDARY SURVEY

FOR
NECH LLC / WINFIELD S. NASH
AND
CHICAGO TITLE COMPANY, LLC

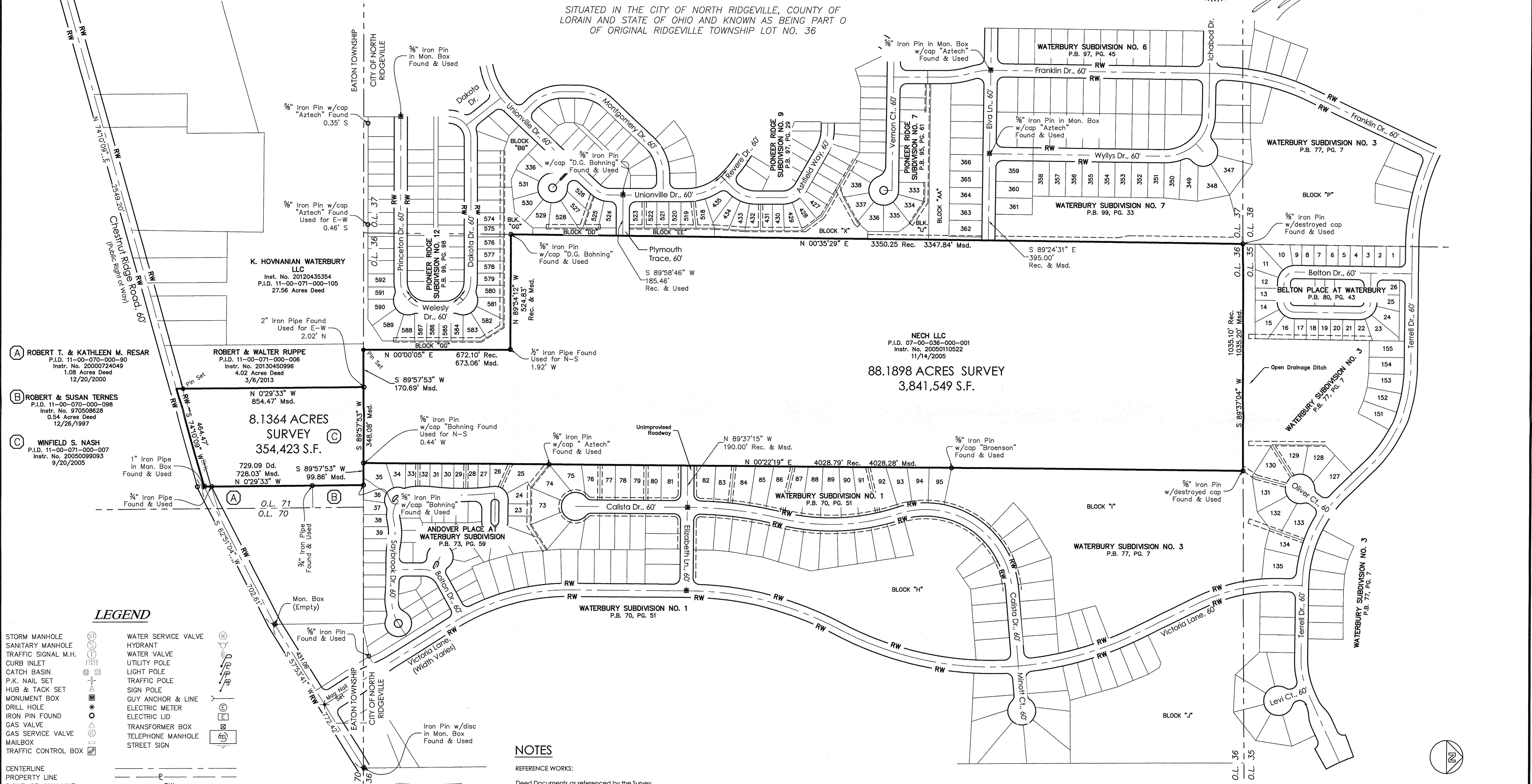
SITUATED IN THE CITY OF NORTH RIDGEVILLE, COUNTY OF LORAIN AND STATE OF OHIO AND KNOWN AS BEING PART OF ORIGINAL RIDGEVILLE TOWNSHIP LOT NO. 36



SURVEYOR CERTIFICATION

This Plat was prepared from a field survey, analysis of recorded plats, recorded deeds, and survey records, as applicable. Distances are given in feet and decimal parts thereof.

Jeremy M. Sack P.S. No. S-8557
Date 10/7/16



- (A) ROBERT T. & KATHLEEN M. RESAR
P.I.D. 11-00-070-000-90
Instr. No. 2000724049
1.08 Acres Deed
12/20/2000
- (B) ROBERT & SUSAN TERNES
P.I.D. 11-00-070-000-098
Instr. No. 970508628
0.54 Acres Deed
12/26/1997
- (C) WINFIELD S. NASH
P.I.D. 11-00-071-000-007
Instr. No. 2005099093
9/20/2005

LEGEND

STORM MANHOLE	WATER SERVICE VALVE
SANITARY MANHOLE	HYDRANT
TRAFFIC SIGNAL M.H.	WATER VALVE
CURB INLET	UTILITY POLE
CATCH BASIN	LIGHT POLE
P.K. NAIL SET	TRAFFIC POLE
HUB & TACK SET	SIGN POLE
MONUMENT BOX	GUY ANCHOR & LINE
DRILL HOLE	ELECTRIC METER
IRON PIN FOUND	ELECTRIC LID
GAS VALVE	TRANSFORMER BOX
GAS SERVICE VALVE	TELEPHONE MANHOLE
MAILBOX	STREET SIGN
TRAFFIC CONTROL BOX	

CENTERLINE	---
PROPERTY LINE	---
RIGHT-OF-WAY LINE	---RW---
WATERLINE, HYDRANT & VALVE	---W---
EASEMENT LINE	---E---
ORIGINAL PROPERTY LINE	---Z---
GAS LINE	---G---
OVERHEAD UTILITY LINE	---OHL---
ELECTRIC LINE	---E---
TELEPHONE LINE	---T---
SANITARY SEWER W/ MANHOLE	---SAN---
STORM SEWER W/ MANHOLE	---STM---
CHAIN-LINK FENCE	---X---
WOOD FENCE	---O---
VINYL FENCE	---V---
RAILROAD TRACKS	---RR---

NECH LLC
P.I.D. 07-00-036-000-001
Instr. No. 20050110522
11/14/2005
88.1898 ACRES SURVEY
3,841,549 S.F.

8.1364 ACRES SURVEY
354,423 S.F.

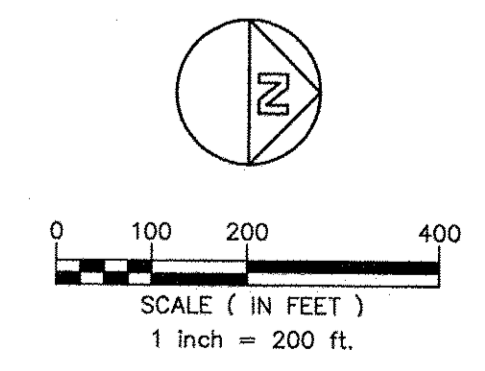
NOTES

REFERENCE WORKS:
Deed Documents as referenced by the Survey

Waterbury Subdivision No. 1 by Kenneth L. Bohning, S-6720 of Donald G. Bohning & Associates, Inc. in July, 2001. Plat Book 70, Pages 51-55 of Lorain County Recorder's Office Plat Records.
Waterbury Subdivision No. 2 by Kenneth L. Bohning, S-6720 of Donald G. Bohning & Associates, Inc. in January, 2002. Plat Book 70, Pages 72-75 of Lorain County Recorder's Office Plat Records.
Andover Place at Waterbury Subdivision by Scott A. Andrews, S-7733 of Donald G. Bohning & Associates, Inc. in October, 2002. Plat Book 73, Pages 59-60 of Lorain County Recorder's Office Plat Records.
Waterbury Subdivision No. 3 by Kenneth L. Bohning, S-6720 of Donald G. Bohning & Associates, Inc. in August, 2003. Plat Book 77, Pages 7-8 of Lorain County Recorder's Office Plat Records.
Pioneer Ridge Subdivision No. 7 by Del-Webb, by Kenneth L. Bohning, S-6720 of Donald G. Bohning & Associates, Inc. in December, 2009. Plat Book 95, Pages 61-63 of Lorain County Recorder's Office Plat Records.
Pioneer Ridge Subdivision No. 9 by Del-Webb, by Kenneth L. Bohning, S-6720 of Donald G. Bohning & Associates, Inc. in February, 2012. Plat Book 97, Pages 29-32 of Lorain County Recorder's Office Plat Records.
Pioneer Ridge Subdivision No. 10 by Del-Webb, by Kenneth L. Bohning, S-6720 of Donald G. Bohning & Associates, Inc. in July, 2013. Plat Book 98, Pages 75-77 of Lorain County Recorder's Office Plat Records.
Waterbury Subdivision No. 7 by Kenneth L. Bohning, S-6720 of Donald G. Bohning & Associates, Inc. in October, 2013. Plat Book 99, Pages 33-34 of Lorain County Recorder's Office Plat Records.
Pioneer Ridge Subdivision No. 12 by Del-Webb, by Kenneth L. Bohning, S-6720 of Donald G. Bohning & Associates, Inc. in May, 2014. Plat Book 99, Pages 98-99 of Lorain County Recorder's Office Plat Records.

BASES OF BEARINGS:
Bearings are based on upon Ohio State Plane Coordinate System, North Zone, NAD 1983, Ground.
All 5/8" x 30" iron pins set are affixed with a plastic cap bearing the inscription "TGC ENG 7631-8557"

10-7-16
11-00-071
07-00-036
R. MAINES
#10-03538-C
07-00-036-000-001
11-00-071-000-007



TGC Engineering, LLC
1310 Sharon Copley Road, P.O. Box 37
Sharon Center, OH 44274
P 330.590.8004 F 888.820.8423
Job No. 1447 . Page 1 of 1