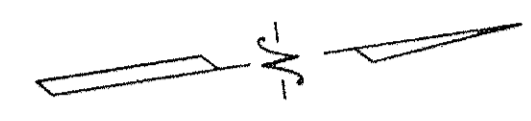
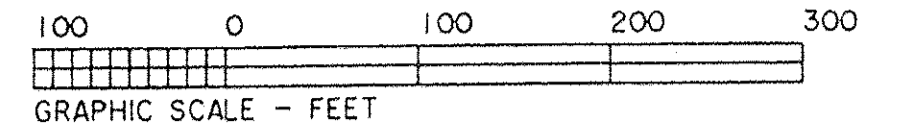
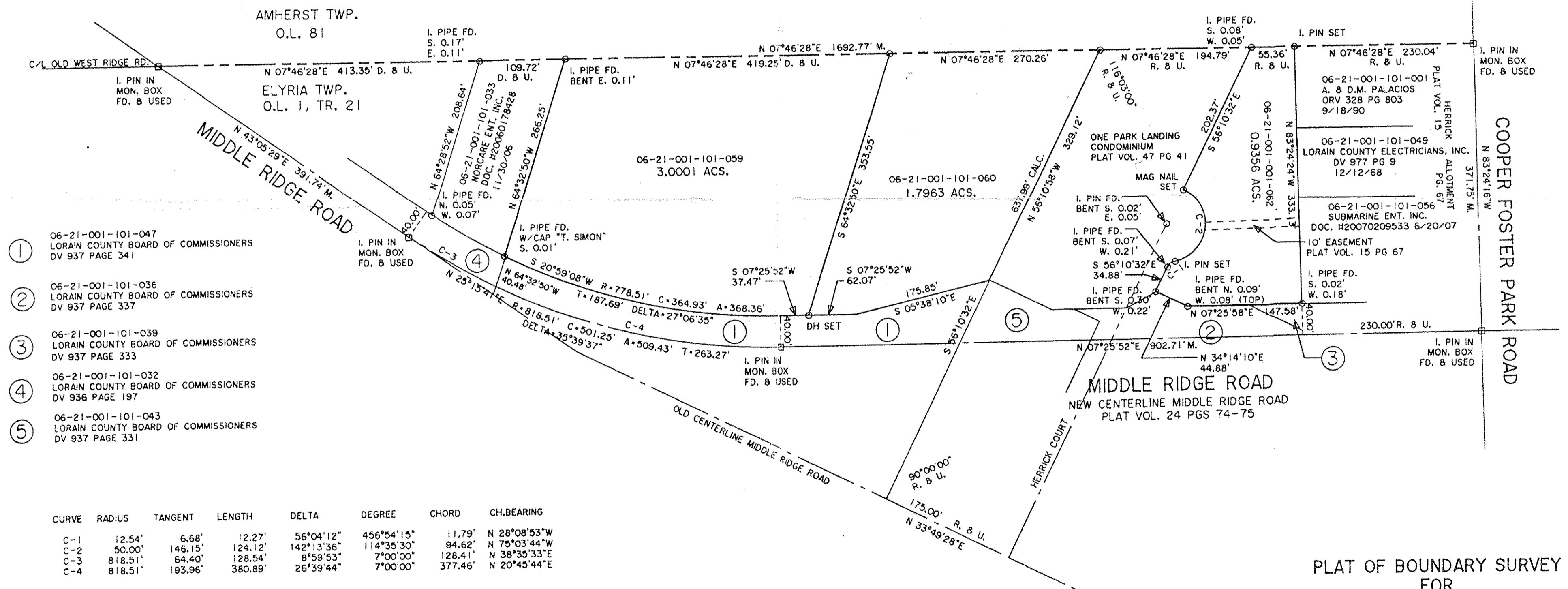


06-21-001-101-065



03541  
 APPROVED  
 LORAIN CO.  
 MAP DEPT  
 DATE 7-20-16  
 PAGE 6-21  
 BY J. Haffner  
 #16-03541



- ① 06-21-001-101-047  
LORAIN COUNTY BOARD OF COMMISSIONERS  
DV 937 PAGE 341
- ② 06-21-001-101-036  
LORAIN COUNTY BOARD OF COMMISSIONERS  
DV 937 PAGE 337
- ③ 06-21-001-101-039  
LORAIN COUNTY BOARD OF COMMISSIONERS  
DV 937 PAGE 333
- ④ 06-21-001-101-032  
LORAIN COUNTY BOARD OF COMMISSIONERS  
DV 936 PAGE 197
- ⑤ 06-21-001-101-043  
LORAIN COUNTY BOARD OF COMMISSIONERS  
DV 937 PAGE 331

CURVE	RADIUS	TANGENT	LENGTH	DELTA	DEGREE	CHORD	CH. BEARING
C-1	12.54'	6.68'	12.27'	56°04'12"	456°54'15"	11.79'	N 28°08'53"W
C-2	50.00'	146.15'	124.12'	142°13'36"	114°35'30"	94.62'	N 75°03'44"W
C-3	818.51'	64.40'	128.54'	8°59'53"	7°00'00"	128.41'	N 38°35'33"E
C-4	818.51'	193.96'	380.89'	26°39'44"	7°00'00"	377.46'	N 20°45'44"E

PLAT OF BOUNDARY SURVEY  
 FOR  
 NORCARE ENTERPRISES, INC.

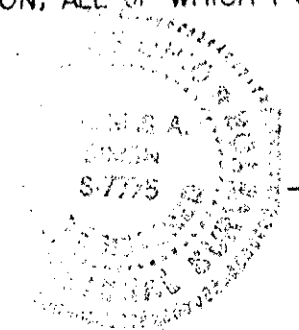
DIMENSIONS SHOWN ON THIS PLAT ARE EXPRESSED IN FEET AND DECIMAL PARTS THEREOF, ALL BEARINGS ARE TO AN ASSUMED MERIDIAN AND ARE USED TO INDICATE ANGLES ONLY. PERMANENT MONUMENTS WERE FOUND OR SET AT ALL POINTS INDICATED HEREON, ALL OF WHICH I CERTIFY TO BE CORRECT.

BEING KNOWN AS PART OF ORIGINAL ELYRIA TOWNSHIP LOT NO. 1, NEWBERRY TRACT AND PART OF SUBLT NO. 13, ALL OF SUBLT NOS. 14 AND 15 OF THE HERRICK ALLOTMENT AS RECORDED IN PLAT VOLUME 15 PAGE 67 OF LORAIN COUNTY RECORDS

THOMAS SIMON & ASSOCIATES, INC.  
 PROFESSIONAL LAND SURVEYORS

150 SOUTH OLIVE STREET  
 ELYRIA, OHIO 44035  
 (440) 327-2925  
 FAX 327-2964

BASIS OF BEARINGS IS THE CENTERLINE OF MIDDLE RIDGE ROAD (NORTH 43°05'29" EAST), IRON PINS SET ARE 5/8" DIAMETER, 30" LONG WITH PLASTIC CAPS "T. SIMON, S-7775".



*Thomas A. Simon*  
 THOMAS A. SIMON  
 REG. PROFESSIONAL SURVEYOR  
 NO. S-7775

CITY OF LORAIN COUNTY OF LORAIN  
 STATE OF OHIO  
 JANUARY, 2015 SCALE: 1" = 100'