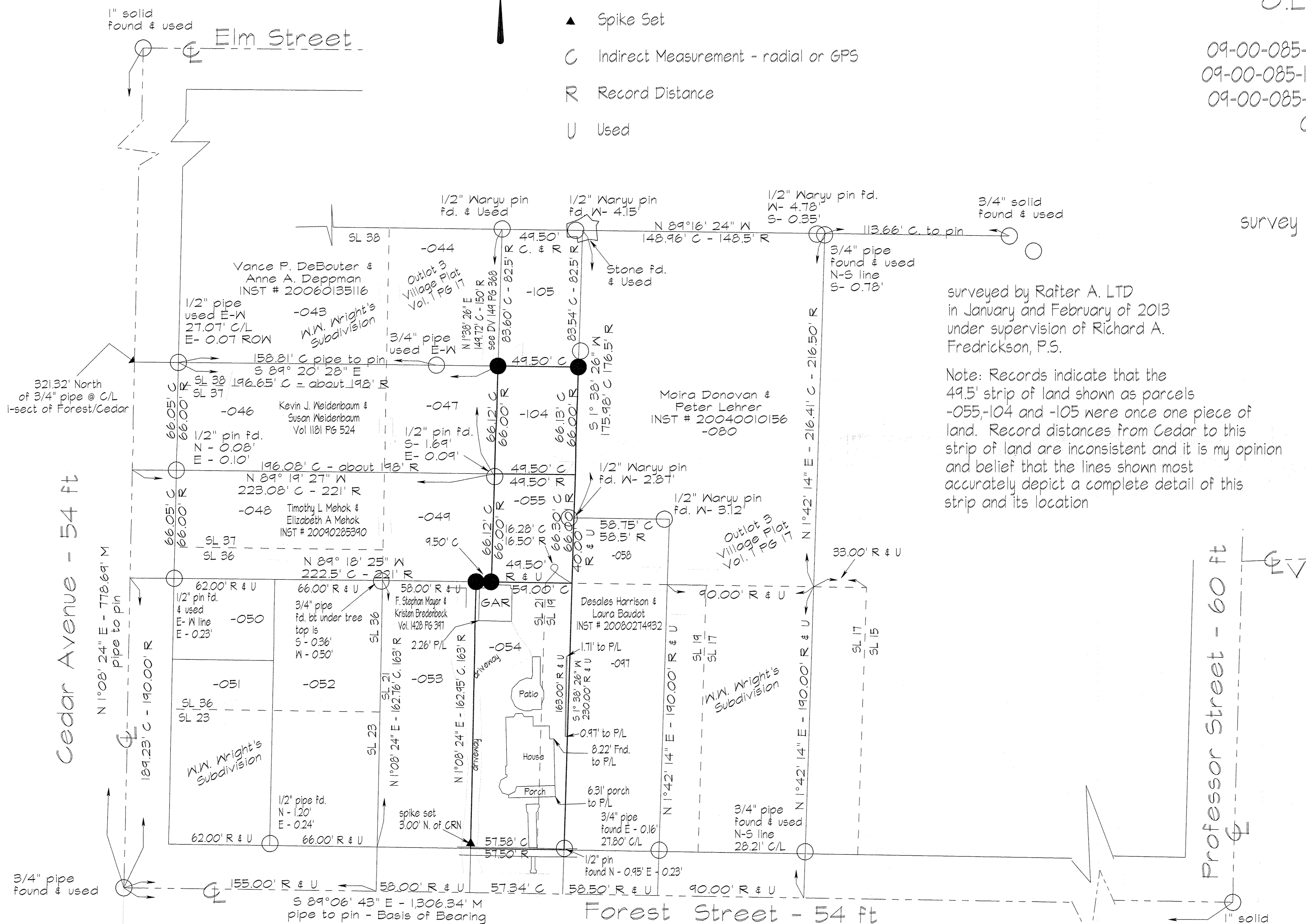


- Legend
- 5/8" rebar w/ cap "Rafter A. LTD"
 - iron pin or pipe found as noted
 - ▲ Spike Set
 - C Indirect Measurement - radial or GPS
 - R Record Distance
 - U Used

Plat of Survey
 State of Ohio
 County of Lorain
 City of Oberlin
 O.L. No. 85 - Russia TWP
 PP Nos.

09-00-085-108-054 - INST 2002-0838695 - 0.2181 acres
 09-00-085-108-055 - INST 2002-0838698 - 0.0752 acres
 09-00-085-108-104 - INST 2005-0075569 - 0.0751 acres
 0.3685 acres as surveyed - overall
 David A. Egloff & Susan T. Egloff

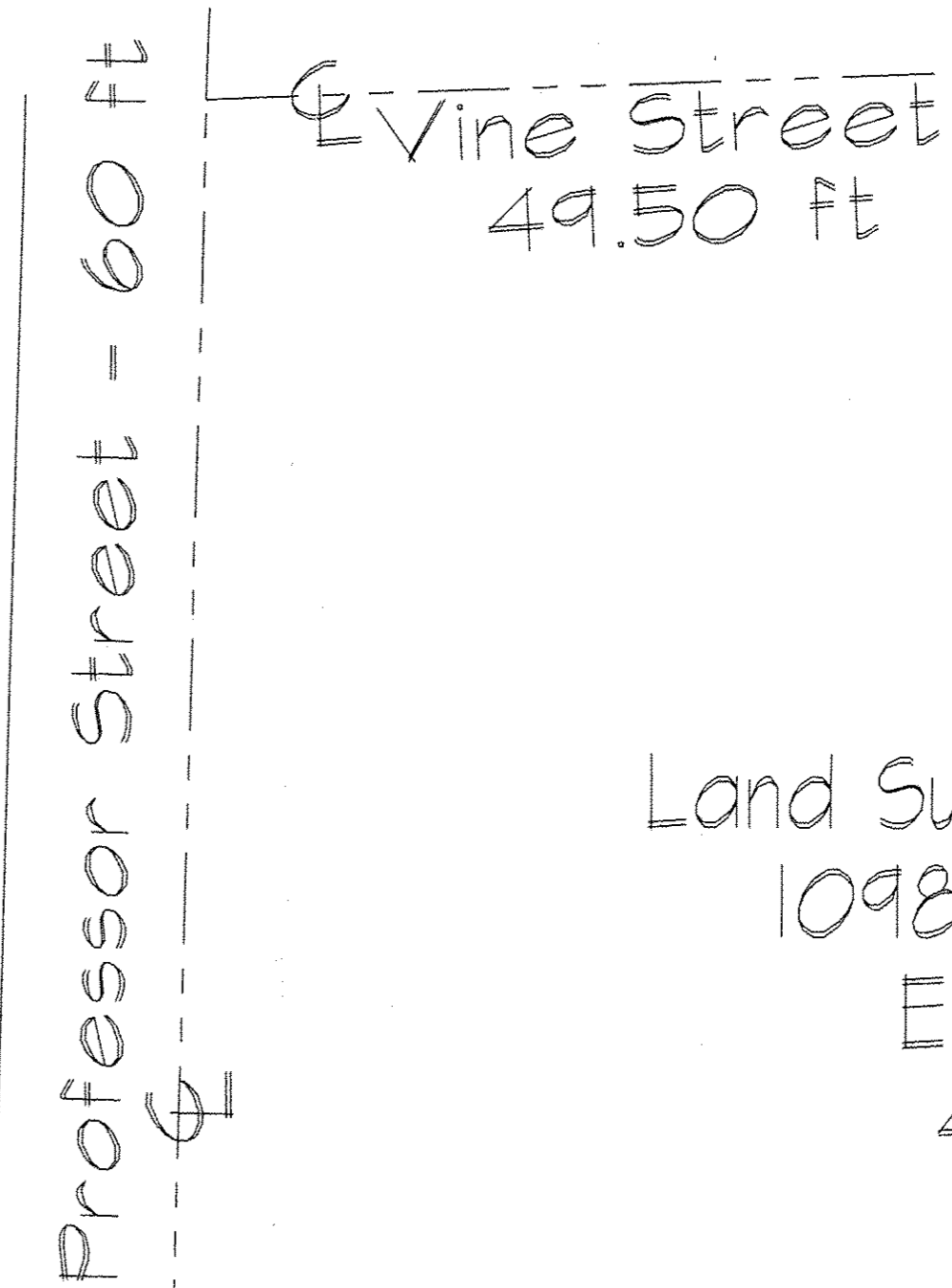
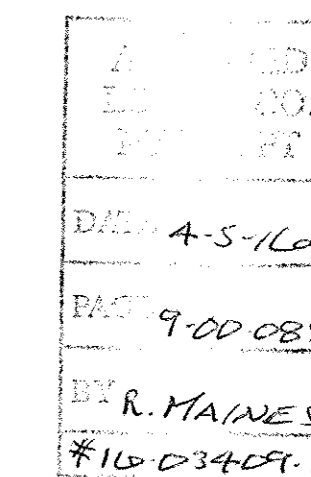
survey made at request of David Egloff



surveyed by Rafter A. LTD
 in January and February of 2013
 under supervision of Richard A.
 Fredrickson, P.S.

Note: Records indicate that the
 49.5' strip of land shown as parcels
 -055, -104 and -105 were once one piece of
 land. Record distances from Cedar to this
 strip of land are inconsistent and it is my opinion
 and belief that the lines shown most
 accurately depict a complete detail of this
 strip and its location

references
 recordings shown hereon
 Plat Vol. 1 PG 31
 Plat of Survey - 097 by C. Waryu - 1998
 Plat of Survey - 051 & -052 - R. Simon - 1994
 1962 Tax Map



Rafter A. LTD
 Land Surveying & Engineering
 10980 LaGrange Road
 Elyria, OH 44035
 440-309-5275

Project 1088-13
 revised drawing 03-09-2016