

DIMENSIONS SHOWN ON THIS PLAT ARE EXPRESSED IN FEET AND DECIMAL PARTS THEREOF, ALL BEARINGS ARE TO AN ASSUMED MERIDIAN AND ARE USED TO INDICATE ANGLES ONLY. PERMANENT MONUMENTS WERE FOUND OR SET AT ALL POINTS INDICATED HEREON, ALL OF WHICH I CERTIFY TO BE CORRECT.

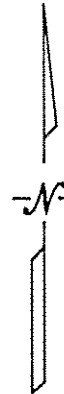


THOMAS A. SIMON  
REG. PROFESSIONAL SURVEYOR  
NO. S-7775

*Thomas A. Simon*

THOMAS A. SIMON  
REG. PROFESSIONAL SURVEYOR  
NO. S-7775

O = IRON PIN SET



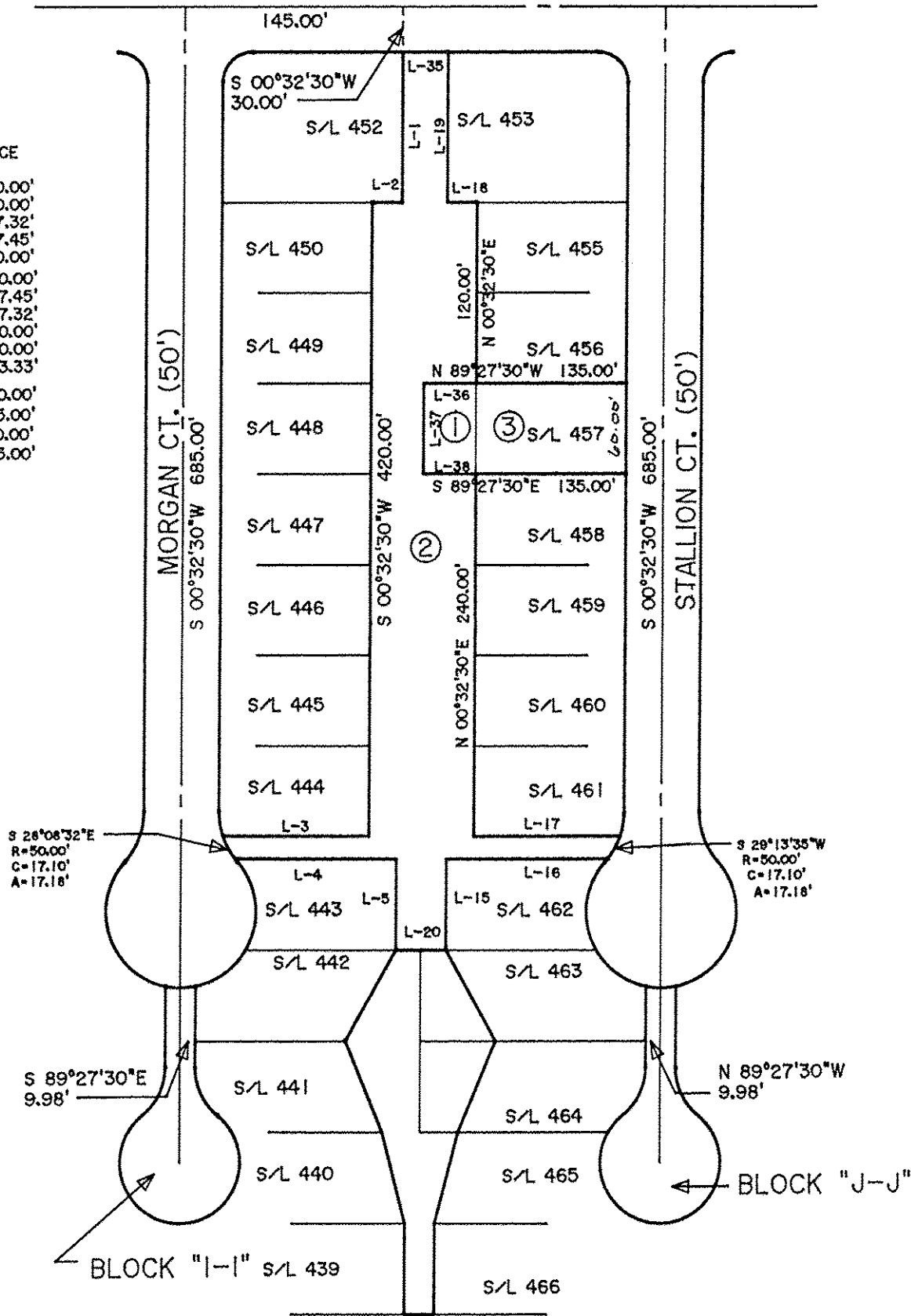
BASIS OF BEARINGS IS THE CENTERLINE OF STABLE ROAD (SOUTH 89°27'30" EAST). IRON PINS SET ARE 5/8" DIAMETER, 30" LONG WITH PLASTIC CAPS "T. SIMON, S-7775".

STABLE ROAD (60')

S 89°27'30"E 320.00'

COURSE	BEARING	DISTANCE
L-1	S 00°32'30"W	100.00'
L-2	N 89°27'30"W	20.00'
L-3	N 89°27'30"W	97.32'
L-4	S 89°27'30"E	107.45'
L-5	S 00°32'30"W	60.00'
L-15	N 00°32'30"E	60.00'
L-16	S 89°27'30"E	107.45'
L-17	N 89°27'30"W	97.32'
L-18	N 89°27'30"W	20.00'
L-19	N 00°32'30"E	100.00'
L-20	S 89°27'30"E	33.33'
L-35	N 89°27'30"W	30.00'
L-36	N 89°27'30"W	35.00'
L-37	S 00°32'30"W	60.00'
L-38	S 89°27'30"E	35.00'

- ① SPLIT  
0.0482 ACS.
- ② REMAINDER  
0.8302 ACS.
- ③ COMBINATION  
0.1860 ACS.



03512

APPROVED  
LEH PROPERTIES, INC.  
MAY 16 2016  
DATE 4-27-16  
PAGE 15-00-098  
BY J Hatfield  
#16-03512

PLAT OF BOUNDARY SURVEY  
SPLIT AND COMBINATION  
FOR

LEH PROPERTIES, INC.

GLENN E. AND MARVINE F. MILLER  
BEING KNOWN AS PART OF BLOCK "E-E"

AND ALL OF SUBLOT NO. 457 IN THE  
PHEASANT RUN VILLAGE SUBDIVISION NO. 1  
RECORDED IN PLAT VOLUME 27 PAGE 16 AND PART OF  
ORIGINAL LAGRANGE TOWNSHIP LOT NO. 98

COUNTY OF LORAIN STATE OF OHIO  
MARCH, 2016 SCALE: 1" = 100'

THOMAS SIMON & ASSOCIATES, INC.  
PROFESSIONAL LAND SURVEYORS

150 SOUTH OLIVE STREET  
ELYRIA, OHIO 44035

(440) 327-2925  
FAX 327-2984